

Your washing machine

Congratulations on having opted for a modern, high-quality domestic appliance manufactured by Siemens. This washing machine is distinguished by its economical energy consumption. Each machine that leaves our factory has been inspected thoroughly to ensure that it functions properly and is in perfect condition.

For further information on our products, accessories, spares and services, consult our website www.siemens-home.com or contact any of our customer service centres.

You can find the contact details for your nearest after-sales service here or in the after-sales service directory (depending on model).

- **GB** 0844 8928999 (calls from a BT landline will be charged at up to 3 pence per minute. A call set-up fee of up to 6 pence may apply)
- **IE** 01450 2655

Environmentally friendly waste disposal

All packaging must be disposed of in accordance with environmental guidelines. This appliance is certified in accordance with European Directive 2002/96/CE on the waste electrical and electronic equipment (WEEE). This directive provides the framework for the EU-wide collection and reuse of used appliances.

Contents

	Page
Intended use	1
Programmes	1
Setting and adjusting the programme	3
Washing	3/4
After washing	4
Individual settings	5/6
Important information	6
Overview of programmes	7
Safety instructions	8
Consumption values	8
Care and cleaning	9
Information on the display panel	9
Maintenance	10
What to do if ...	11

Protection of the environment/Conservation tips

- Always fill the washing machine with a maximum amount of laundry for the relevant programme.
- Wash normally soiled laundry without a pre-wash.
- Instead of **Cottons 90 °C**, choose the programme **Cottons 60 °C** with the additional function **ecoPerfect**. Comparable cleaning result was significantly lower energy consumption.
- Measure the detergent according to the manufacturer's instructions and water hardness.
- If the laundry is then dried in the tumble dryer, select spin speed according to instructions of dryer manufacturer.

Intended use

- for domestic use only,
- for washing machine-washable fabrics and hand-washable wool in detergent solution,
- to be operated with cold or cold and hot (max. 60 °C) drinking water, depending on model, and commercially available detergents and care products which are suitable for use in washing machines.

- Do not leave children unattended near the washing machine.
- The washing machine is not to be used by children or persons not familiar with the operating instructions.
- Keep pets away from the washing machine.

Preparation

Correct installation according to the separate installation actions.

Checking the machine

- Never use a damaged machine!
- Contact customer service!

Connecting the mains plug

Make sure your hands are dry! Handle the plug only!

Turning on the tap

Before the first wash, run a wash cycle with no laundry in the machine → Page 9.

Sorting and loading laundry

Follow the manufacturer's care information! Sort laundry according to the label's indications. And according to type, colour, soiling and temperature. Do not exceed the maximum load → Page 7.

Observe important information! → Page 6

Wash laundry of different sizes in the same wash programme. Do not trap items of laundry between the washing machine door and seal.

Add detergent and care products

Measure detergent according: amount of laundry, soiling, water hardness (ask your water supply company) and manufacturer's instructions. For models without insert for liquid detergent: Pour liquid detergent into the appropriate dispenser and place in the drum.

Insert for liquid detergent (depending on model) → page 6

Compartment II: detergent for the main wash, water softener, bleach, stain remover

Compartment ☼: Fabric softener, bleach

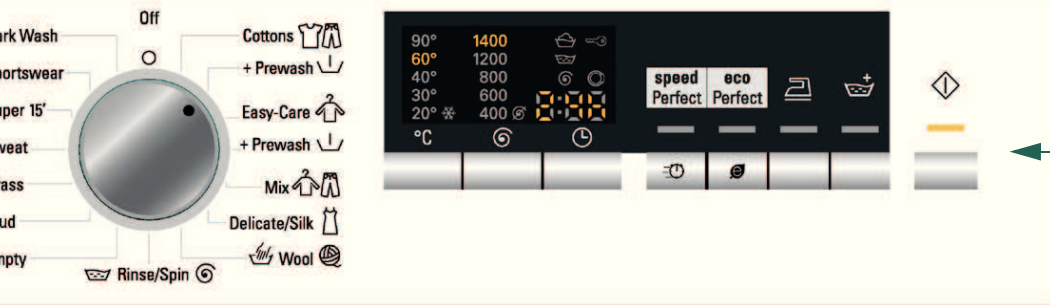
Compartment I: Detergent for prewash

Setting** and adjusting programmes

Programmes

Detailed overview of programmes → page 7. Temperature and spin speed can be selected individually, irrespective of the selected programme and programme progress.

	Cottons	Hard-wearing fabrics
	+ Prewash	Hard-wearing fabrics, prewash
	Easy-Care	Synthetic fabrics
	+ Prewash	Synthetic fabrics, prewash
	Mix	Different types of laundry
	Delicate/Silk	Delicate washable fabrics
	Wool	Hand/machine washable wool
	Rinse/Spin	Laundry washed by hand, (Extra rinse) button activated; if only using the spin cycle, deactivate the button
	Empty	Drain rinsing water with (without final spin)
	Mud	
	Grass	Hard-wearing and easy-care fabrics, special stain programme → page 5
	Sweat	
	Super 15	Short programme
	Sportswear	Fabrics made from microfibre
	Dark Wash	Hard-wearing fabrics



	90 °C	°C (temp.)	Select the temperature (* = cold)
	1400*	° (rpm)	Select the spin speed (* depending on the model) or (without final spin, laundry soaks in the last rinsing water, display panel ---)
	1 - 24 h	⌚ (Ready in)	End of programme after ...
	Status displays		Programme sequence displays: Wash, rinse, spin, programme duration or end (-0-)
	Childproof lock		→ page 5
	Open the washing machine door, reload laundry		→ page 4, 5

**If the symbol flashes in the display panel, the childproof lock is active → Deactivate childproof lock, page 5.

For stain programmes, additional functions and option buttons → Individual settings, page 5.

Press (Start/Reload)

All buttons are sensitive and need only to be touched lightly. Press and hold the (Ready in) option button for an automatic run through all setting options.

Washing

Detergent drawer with compartments I, II, ☼

Drum

Control panel

Door

Service door

Removing the washing

Open the washing machine door and remove the washing. If (without final spin) is active: turn the programme selector to or select the spin speed. Choose (Start/Reload).

- Remove any foreign objects. Risk of rusting.
- Leave the washing machine door and detergent door open so that any residual water can evaporate.

Turn the tap off

Not required for Aqua-Stop models → Refer to Installation instructions.

Switching off

Turn the programme selector to **Off**.

End of programme when ...

... (Start/Reload) flashes and - - appears on the display panel. Note: If display panel lighting is switched off, press any button → Energy saving mode, page 5.

Interrupting the programme

- Programmes at high temperatures:
- Cool washing: Select Rinse/Spin.
 - Press (Start/Reload).
- Programmes at lower temperatures:
- Select Rinse/Spin (deactivate (Extra rinse) button) or Empty.
 - Press (Start/Reload).

Changing the programme if ...

- ... you have selected the wrong programme by mistake:
- Reselect the programme.
 - Press (Start/Reload). The new programme starts from the beginning.

Reloading laundry if ... → page 5

... Press (Start/Reload); both the symbols YES + are displayed on the display panel. If NO is lit, the washing machine door cannot be opened. Press (Start/Reload).

Individual settings

Option buttons

You can change the spin speed and the temperature before the selected programme starts and while it is running. The effects depend on the programme progress.

°C (Temperature)

You can change the displayed washing temperature. The maximum selectable temperature depends on the current programme.

⌚ (spin speed in rpm/⌚ (without final spin))

You can change the displayed spin speed. The maximum selectable spin speed depends on the model and which programme is currently selected.

⌚ (Ready in)

When you select the programme, the relevant programme duration is displayed. You can delay the end of the programme before it begins. The ready in-time can be set in increments of one hour up to a maximum of 24 hours. Press the (Ready in) button until the required number of hours is displayed (h = hour). Choose (Start/Reload).

Additional functions → Overview of programmes, page 7

speedPerfect For washing in a shorter time with a washing outcome comparable to that of the standard programme. Maximum load → Overview of programmes, page 7.

(Reduced Ironing) Special spin sequence with subsequent fluffing. Gentle final spin: residual moisture in the laundry slightly increased.

(Extra Rinse) Additional rinse cycle. For areas with very soft water or for further enhancing the spin result.

Childproof lock

in the display panel You can lock the washing machine to prevent the functions you have set from being changed inadvertently. **ON/OFF:** after the start/end of the programme, press and hold (Start/Reload) for approx. 5 seconds. Note: The childlock can remain activated until you wish to start the next programme, even after switching off the machine. Then you can deactivate the childlock before starting the programme and activate it again as necessary once the programme has started.

- Note:
- The symbol is lit: Childlock active.
 - The symbol flashes: Childlock active and then the programme selector is altered. To prevent the programme from stopping, move the programme selector back to the original programme, the symbol is lit again.

Reloading

YES + in the display panel Press (Start/Reload) if you want to add additional items of laundry after the programme has started. The machine checks whether reloading is possible. YES + are lit: reloading is possible. NO flashes: wait until YES + are lit. Note: do not open the door until both the YES + symbols are lit. NO: it is not possible to reload. Note: for safety reasons, the washing machine door remains locked when the water level and/or temperature is high, or during spinning. To continue the programme, press the (Start/Reload) button.

Stain programmes

Do not let stains dry. Remove any solid residue beforehand. Sort items of laundry as usual and load the washing machine. The washing machine adjusts the washing temperature, drum movement and soaking times to suit the type of stain. Hot or cold water, gentle or intensive washing control (thanks to the new drum structure) and a long or short soaking time ensure that the wash programme has a special sequence for each type of stain. The result: optimum stain treatment without the use of additional special detergents.

Energy saving mode

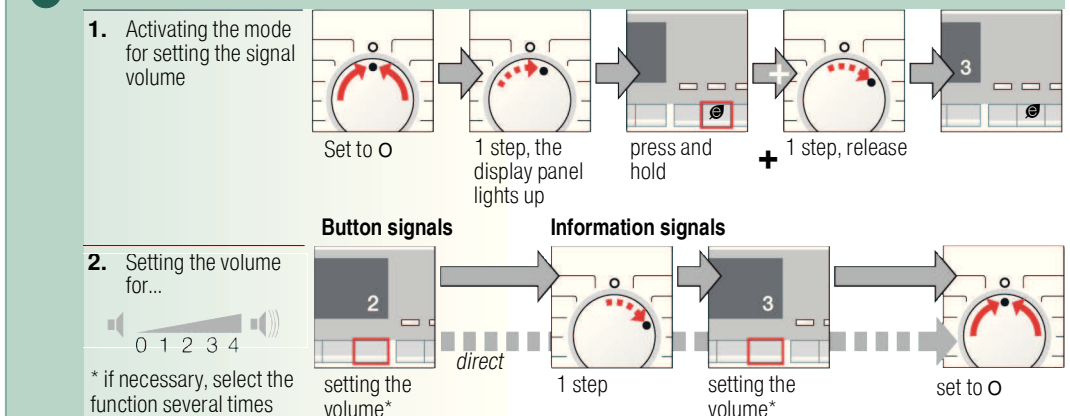
The display panel lighting goes out after a few minutes, (Start/Reload) flashes. Press any button to switch on the lighting.

(Start/Reload)

To start the programme or to subsequently load additional laundry, and to activate/deactivate the childproof lock.

Individual settings

Signal



Important information

Protecting the laundry and the machine

- When determining the dosage of all washing powders, additives and cleaning agents, you must follow the manufacturer's instructions.
- Empty all pockets
- Check for metal items (paper-clips, etc.).
- Wash delicates in a laundry bag (tights, curtains, underwired bras).
- Fasten zips, do up any buttons.
- Brush sand out of pockets and collars.
- Remove curtain fittings or place in the laundry bag.

Laundry with varying degrees of soiling

light	Wash new items of clothing separately. Do not prewash. If required, choose the additional function speedPerfect .
intense wash	Pre-treat any stains as necessary. Load less laundry. Choose a programme with a prewash.

Soaking

Load laundry of the same colour. Pour soaking agent/detergent into compartment II in accordance with the manufacturer's instructions. Turn the programme selector to **Cottons 30 °C** and press (Start/Reload). After approx. 10 minutes, press (Start/Reload) to pause the programme. Once the required soaking time has elapsed, press (Start/Reload) again to continue the programme, or select a different programme.

Starch

Laundry should not be treated with fabric softener. Starching is possible in all wash programmes if liquid starch is used. Pour the starch in accordance with the manufacturer's instructions into fabric softener compartment ☼ (rinse first if necessary).

Dyeing / Bleaching

Dye should only be used in normal household quantities. Salt may damage stainless steel. Always follow the dye manufacturer's instructions. Do **not** use the washing machine for bleaching clothes.

Insert for liquid detergent

- depending on model
- Position the insert for dispensing liquid detergent:
- Remove the detergent drawer completely → page 9
 - Slide the insert forwards and click into place.
- Do not use the insert (slide upwards): for gel detergents and washing powder, for programmes with **+ Prewash** and end time option.

Programmes	°C	max.	Type of laundry	Additional functions, Information
Cottons	☼ - 90 °C	7 kg/ 4 kg*	hard-wearing fabrics; cottons or linen that can be washed at 90 °C	speedPerfect *, ecoPerfect (Reduced Ironing), (Extra Rinse)
Easy-Care	☼ - 60 °C		easy-care cotton, linen, synthetic or blended fabrics	speedPerfect (Reduced Ironing), (Extra Rinse)
Mix	☼ - 40 °C		cotton or synthetic fabrics	speedPerfect (Reduced Ironing), (Extra Rinse); different types of laundry can be washed together
Dark Wash	☼ - 40 °C	3.5 kg	dark cotton and dark synthetic fabrics	speedPerfect (Reduced Ironing), (Extra Rinse); reduced rinse and final spin cycle
Mud			hard-wearing and easy-care fabrics	(Reduced Ironing); optimum stain treatment → page 5
Grass	☼ - 60 °C			
Sweat				
Delicate/Silk	☼ - 40 °C		for delicate fabrics, e.g. silk, satin, synthetic fibres or blended fabrics (e.g. curtains)	speedPerfect (Reduced Ironing), (Extra Rinse); no spin between rinse cycles
Wool	☼ - 40 °C	2 kg	hand/machine washable wool	particularly delicate wash programme to avoid shrinkage of laundry; longer programme breaks (fabrics rest in the detergent solution)
Super 15'	☼ - 40 °C		synthetic cotton, linen, synthetic fibres or blended fabrics	short programme of approx. 15 minutes, suitable for lightly soiled laundry
Sportswear	☼ - 40 °C		fabrics made from microfibre	speedPerfect (Reduced Ironing), (Extra Rinse)
Additional programmes				Rinse/Spin/Empty
* reduced load with additional function speedPerfect . For programmes without prewash, add detergent to compartment II. For prewash programmes, distribute the detergent between compartments I and II.				

Siemens Electrogeräte GmbH
Carl-Wery Str. 34
81739 Munich / Germany

WM14Q440BY / ...



Safety instructions

- Carefully read the instruction manual and the information enclosed, and act accordingly.
- Keep the machine's documentation for future reference.

Risk of electric shock!

- Never pull the cable to disconnect the mains plug!
- Never insert/disconnect the mains plug with damp hands.

Danger to life!

For worn-out appliances:

- Disconnect the mains plug.
- Sever the mains cable and discard along with the plug.
- Destroy the lock on the washing machine door. This will prevent children from locking themselves in and risking their lives.

Danger of suffocation!

Risk of poisoning!

Risk of explosion!

Risk of injury!

- Keep packaging, film and packaging parts out of the reach of children.
- Items of laundry pretreated with cleaning agents containing solvents, e.g. stain remover/cleaning solvent may lead to an explosion after being loaded into the washing machine. Rinse items of laundry thoroughly by hand beforehand.
- The washing machine door may become very hot.
- Be careful when draining hot detergent solution.
- Do not climb onto the washing machine.
- Do not lean on the open washing machine door.
- Do not reach into the drum if it is still rotating.
- Be careful when opening the detergent drawer while the machine is in operation.

Consumption values <small>depending on model</small>				
Programme	Load	Electricity***	Water***	Programme duration***
Cottons (cold)	7 kg	0.27 kWh	66 l	145 min
Cottons 30 °C*	7 kg	0.39 kWh	66 l	145 min
Cottons 40 °C*	7 kg	1.02 kWh	66 l	155 min
Cottons 60 °C*	7 kg	1.15 kWh	66 l	165 min
Cottons 90 °C	7 kg	2.10 kWh	76 l	155 min
Easy-Care 40 °C*	3.5 kg	0.64 kWh	55 l	103 min
Mix 40 °C	3.5 kg	0.54 kWh	47 l	60 min
Delicate/Silk 30 °C	2 kg	0.19 kWh	34 l	41 min
Wool 30 °C	2 kg	0.17 kWh	39 l	40 min

* Programme setting for testing in accordance with valid standard EN60456. Note on comparative tests: For testing the test programmes, wash the specified load using the maximum spin speed.				
Programme	Additional function	Load	Annual energy consumption	Annual water consumption
Cottons 40/60 °C	ecoPerfect **	7/3.5 kg	174 kWh	8140 l

** Programme setting for testing and energy labelling in accordance with EU directive 2010/30/EU with cold water (15 °C).
*** The values deviate from the indicated values depending on water pressure, hardness, and inlet temperature, ambient temperature, type, amount and soiling of the laundry, detergent used, fluctuations in the power supply and selected additional functions.

Care and cleaning

Before the first wash

Do not put laundry in the machine! Turn on the tap. Put into compartment II:

- approx. 2 litres of water
- detergent (measure according to the manufacturer's instructions for lightly soiled laundry and water hardness)

Turn the programme selector to **Easy-Care 60 °C** and press (**Start/Reload**). At the end of the programme, turn the programme selector to **Off**.

Machine housing, control panel

- Remove detergent and cleaning agent residue.
- Wipe with a soft, damp cloth.
- Do not wash the machine with a jet of water!

Cleaning the detergent drawer ...

... if it contains detergent or fabric softener residues.

- Pull out, press insert down and remove drawer completely.
- To remove the insert: press upwards from below with your finger.
- For models with insert for liquid detergent: Slide the insert upwards and remove it from the back.
- Clean the detergent dispenser tray and inserts with water and a brush and dry them.
- Attach the insert and engage (connect the cylinder to the guide pin).
- Push in the detergent drawer.

Leave the detergent drawer open so that any residual water can evaporate.

Drum

Leave the washing machine door open so that the drum can dry out. For rust stains, use chlorine-free cleaning agent, not steel wool.

Descaling Ensure there is no laundry in the machine!

This will not be necessary if the correct dosage of detergent is used. If it is, descale the appliance according to the manufacturer's instructions. Descaling products can be acquired on the website or from customer services → *Installation instructions*.

Emergency release e.g. in the event of a power cut

The programme continues to run when the power has been restored. However, if the laundry has to be removed, the washing machine door can be opened as follows:

Risk of scalding!
The detergent solution and laundry may be hot. Let it cool. Do not reach into the drum if it is still rotating. Do not open the washing machine door if water can be seen through the glass.

- Turn the programme selector to **Off** and disconnect the mains plug.
- Drain the detergent solution → page 10.
- Pull the emergency release downwards with a tool and release. The washing machine door can then be opened.

Information on the display panel depending on model

flashes	Close the washing machine door properly; laundry may be caught.
E: 17 E: 29 E: 18	Turn on the (cold water) tap fully, supply hose kinked or trapped; Clean the filter → page 10, water pressure too low. <ul style="list-style-type: none">Detergent solution pump blocked; Clean the detergent solution pump → page 10.Drainage hose / waste pipe blocked; Clean the drainage hose at the siphon → page 10.Heavy foam build-up → page 11, status indicator flashes.
E: 23 R: 10	Water in the base tub, appliance leaking. Call customer services! <ul style="list-style-type: none">Open the (hot water) tap fully.Inlet hose kinked/trapped.Water pressure too low. Clean the filter → page 10.Hot water hose not connected; appliance will operate using cold water only. Ignore information, only for first wash cycle.
	Childproof lock activated: to deactivate → page 5.

Maintenance

Detergent solution pump

Turn the programme selector to **Off** and disconnect the mains plug.

- Using a screwdriver or the insert for liquid detergent (depending on model), open and remove the service flap.
- Remove the folding gutter and place a large enough container underneath.
- For models with a drainage hose:** Remove the drainage hose from the retainer and pull it from the housing. Remove the sealing cap, allow the detergent solution to flow out into the container. Replace the sealing cap and place the drainage hose in the retainer.
- For models without a drainage hose:** Carefully unscrew the pump cover 180° or until the detergent solution begins to flow out on the folding gutter. When the container is full, close the pump cover and empty the container. Repeat the above steps until all the detergent solution has completely drained out.
- Carefully unscrew the pump cover (there may be residual water).
- Clean the interior, pump cover thread and pump housing (the impeller in the detergent solution pump must rotate).
- Replace the pump cover and screw it tightly.
- Return the drainage hose (depending on model) and the folding gutter to their start position.
- Place the service flap back on and close.

To prevent unused detergent from flowing straight into the drain during the next wash: Pour 2 litres of water into compartment **II** and then start the **Empty** programme.

Drainage hose at the siphon

Turn the programme selector to **Off** and disconnect the mains plug.

- Loosen the hose clamp, carefully remove the drainage hose (residual water).
- Clean the drainage hose and siphon connecting piece.
- Reattach the drainage hose and secure the connection with the hose clamp.

Filter in the water supply

Risk of electric shock!
Do not immerse the Aqua-Stop safety device in water (contains an electric valve).

Reduce the water pressure in the supply hose:

- Turn off the tap.
- Select any programme (except **Rinse/Spin/Empty**).
- Choose (**Start/Reload**). Let the programme run for approximately 40 seconds.
- Turn the programme selector to **Off**. Disconnect the mains plug. Clean the filter:
- Disconnect the hose from the tap. Clean the filter using a small brush. **and/or** for Standard and Aqua-Secure models: Remove the hose on the rear of the appliance. Remove the filter with pliers and clean.
- Connect the hose and check for leaks.

What to do if...

	Water is leaking out	<ul style="list-style-type: none">Attach/replace the drainage hose correctly.Tighten the screw connection of the supply hose.
	No water supply. Detergent not dispensed.	<ul style="list-style-type: none"> (Start/Reload) not selected?Tap not turned on?Filter blocked? Clean the filter → page 10.Supply hose kinked or trapped?
	The appliance door will not open.	<ul style="list-style-type: none">Safety function active. Programme stopped? → page 4. (without final spin) selected? → page 3, 4.Can be opened by emergency release only? → page 9.Door locked after the washing machine is switched off: Switch on the washing machine and wait for 5 seconds.
	The selected programme does not start.	<ul style="list-style-type: none"> (Start/Reload) or (Ready in) time selected?Washing machine door closed?Childproof lock active? Deactivate → page 5.
	Detergent solution is not drained.	<ul style="list-style-type: none"> (without final spin) selected? → page 3, 4.Clean the detergent solution pump → page 10.Clean the waste pipe and/or drainage hose.
	No water can be seen in the drum.	<ul style="list-style-type: none">Not a fault. Water remains inside below the visible area.
	Spin result not satisfactory. Laundry wet/too damp.	<ul style="list-style-type: none">Not a fault. Spin control system has stopped the spin cycle. Uneven distribution of laundry. Distribute large and small items of laundry evenly in the drum. (Reduced Ironing) selected? → page 5.Selected speed too low? → page 5.
	Programme duration changes suddenly during operation.	<ul style="list-style-type: none">Not a fault. The program time can vary according to the distribution of laundry, with it therefore being possible for the display panel to show adjustments in the duration.
	Spin cycle performed several times.	<ul style="list-style-type: none">Not a fault. The balance control system has detected an imbalance and is attempting to redress this by repeating the spin.
	Residual water in the compartment for care products.	<ul style="list-style-type: none">Not a fault: the action of the care product is not affected.Clean the compartment if necessary → page 9.
	Odour formation in the washing machine.	<ul style="list-style-type: none">Run programme Cottons 90 °C without laundry. Use standard detergent.
	Status display flashing. Appliance has detected a detergent overload.	<ul style="list-style-type: none">Too much detergent used? If foam is escaping from the detergent drawer: mix 1 tablespoon of fabric softener with ½ litre of water and pour into compartment II (not with outdoor or down fabrics).Reduce the detergent dosage for the next wash cycle.
	Intense noise formation, vibrations and "wandering" during the spin cycle.	<ul style="list-style-type: none">Are the appliance feet fixed? Secure the appliance feet → <i>Installation instructions</i>.Transportation safety devices removed? Remove transportation safety devices → <i>Installation instructions</i>.
	Display panel/indicator lamps remain turned off while the machine is working.	<ul style="list-style-type: none">Energy-saving mode → page 5.Power cut?Fuses triggered? Reset/change the fuse.If the fault occurs repeatedly, call customer services.
	Programme sequence longer than usual.	<ul style="list-style-type: none">Not a fault. Unbalanced load detection system adjusts imbalance by repeatedly distributing the laundry.Not a fault: foam detection system active; adds an additional rinse cycle.
	Detergent residues on the laundry.	<ul style="list-style-type: none">Occasionally, phosphate-free detergents contain water-insoluble residues.Select Rinse/Spin or brush out the laundry after washing.

If you cannot correct a fault yourself or if a repair is necessary:
– Turn the programme selector to **Off** and remove the mains plug from the socket.
– Turn off the water supply and call customer services → *Installation instructions*.

Observe the safety instructions on page 8!

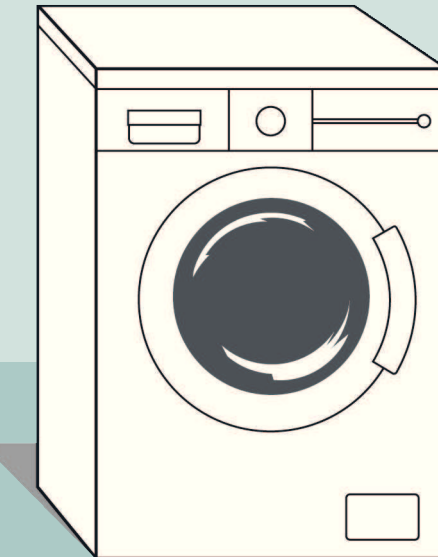
Washing Machine

Instructions for use

Read these instructions and the separate installation instructions before operating the washing machine.

SIEMENS

en



Your washing machine

Congratulations on having opted for a modern, high-quality domestic appliance manufactured by Siemens. This washing machine is distinguished by its economical energy consumption. Each machine that leaves our factory has been inspected thoroughly to ensure that it functions properly and is in perfect condition.

For further information on our products, accessories, spares and services, consult our website www.siemens-home.com or contact any of our customer service centres.

You can find the contact details for your nearest after-sales service here or in the after-sales service directory (depending on model).

- **GB** 0844 8928999 (calls from a BT landline will be charged at up to 3 pence per minute. A call set-up fee of up to 6 pence may apply)
- **IE** 01450 2655

Environmentally friendly waste disposal

All packaging must be disposed of in accordance with environmental guidelines. This appliance is certified in accordance with European Directive 2002/96/CE on the waste electrical and electronic equipment (WEEE). This directive provides the framework for the EU-wide collection and reuse of used appliances.

Contents

	Page
Intended use	1
Programmes	1
Setting and adjusting the programme	3
Washing	3/4
After washing	4
Individual settings	5/6
Important information	6
Overview of programmes	7
Safety instructions	8
Consumption values	8
Care and cleaning	9
Information on the display panel	9
Maintenance	10
What to do if ...	11



Protection of the environment/Conservation tips

- Always fill the washing machine with a maximum amount of laundry for the relevant programme.
- Wash normally soiled laundry without a pre-wash.
- Instead of **Cottons 90 °C**, choose the programme **Cottons 60 °C** with the additional function **ecoPerfect**. Comparable cleaning result was significantly lower energy consumption.
- Measure the detergent according to the manufacturer's instructions and water hardness.
- If the laundry is then dried in the tumble dryer, select spin speed according to instructions of dryer manufacturer.

Intended use

- for domestic use only,
- for washing machine-washable fabrics and hand-washable wool in detergent solution,
- to be operated with cold or cold and hot (max. 60 °C) drinking water, depending on model, and commercially available detergents and care products which are suitable for use in washing machines.



- Do not leave children unattended near the washing machine.
- The washing machine is not to be used by children or persons not familiar with the operating instructions.
- Keep pets away from the washing machine.

Preparation



Correct installation according to the separate installations actions.



Checking the machine

- Never use a damaged machine!
- Contact customer service!



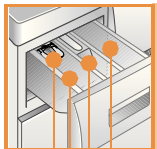
Connecting the mains plug



Make sure your hands are dry! Handle the plug only!



Turning on the tap



Insert for liquid detergent (depending on model) → page 6

Compartment II: detergent for the main wash, water softener, bleach, stain remover

Compartment ⌘: Fabric softener, bleach

Compartment I: Detergent for prewash

Programmes

Detailed overview of programmes → page 7. Temperature and spin speed can be selected individually, irrespective of the selected programme and programme progress.

	Cottons	Hard-wearing fabrics
	+ Prewash	Hard-wearing fabrics, prewash
	Easy-Care	Synthetic fabrics
	+ Prewash	Synthetic fabrics, prewash
	Mix	Different types of laundry
	Delicate/Silk	Delicate washable fabrics
	Wool	Hand/machine washable wool
	Rinse/Spin	Laundry washed by hand, (Extra rinse) button activated; if only using the spin cycle, deactivate the button
	Empty	Drain rinsing water with (without final spin)
	Mud	
	Grass	Hard-wearing and easy-care fabrics, special stain programme → page 5
	Sweat	
	Super 15'	Short programme
	Sportswear	Fabrics made from microfibre
	Dark Wash	Hard-wearing fabrics

Programme selector

Display panel / option buttons

Additional information

Programme selector for switching the machine on and off and for selecting the programme. Can be turned in either direction.

⌘ - 90 °C	°C (temp.)	Select
- 1400*	(rpm)	Select spin,
1 - 24 h	(Ready in)	End of
Status displays		Prog
		Wash
		Child
		Oper

Before the first wash,
run a wash cycle with no laundry in the machine → Page 9.

Sorting and loading laundry

Follow the manufacturer's care information!
Sort laundry according to the label's indications.
And according to type, colour, soiling and temperature.
Do not exceed the maximum load → Page 7.

Observe important information! → Page 6

Wash laundry of different sizes in the same wash programme.
Close the door. Take care not to trap items of laundry between the washing machine door and seal.

Add detergent and care products

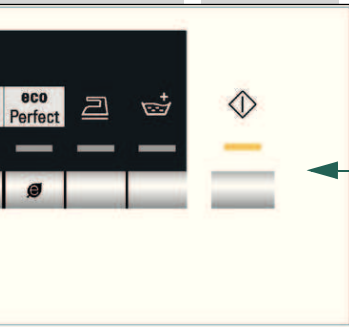
Measure detergent according:
amount of laundry, soiling, water hardness (ask your water supply company) and
manufacturer's instructions.
For models without insert for liquid detergent:
Pour liquid detergent into the appropriate dispenser and place in the drum.

i Dilute viscous fabric softener and fabric conditioner with water.
This prevents blockages.

Setting** and adjusting programmes

Additional functions

Start /
Reload



i **If the symbol flashes in the display panel, the childproof lock is active → Deactivate childproof lock, page 5.

For stain programmes, additional
functions and option buttons
→ Individual settings, page 5.

Press (Start/Reload)

i All buttons are sensitive and need
only to be touched lightly. Press and
hold the (Ready in) option button
for an automatic run through all
setting options.

Select the temperature (* = cold)

Select the spin speed (* depending on the model) or (without final
spin) → If laundry soaks in the last rinsing water, display panel ---)

Programme sequence after ...

Programme sequence displays:

Wash, rinse, spin, programme duration or end (-0-)

Childproof lock → page 5

Open the washing machine door, reload laundry → page 4, 5

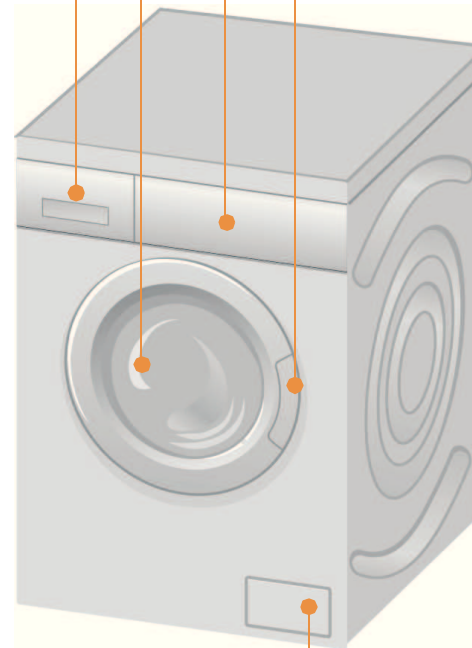
Washing

Detergent drawer with
compartments I, II,

Drum

Control panel

Door



Service door

Washing

Removing the washing

Open the washing machine door and remove the washing.
If (without final spin) is active: turn the programme selector to Empty
or select the spin speed.
Choose (Start/Reload).



- Remove any foreign objects. Risk of rusting.
- Leave the washing machine door and detergent door open
so that any residual water can evaporate.

Turn the tap off

Not required for Aqua-Stop models → Refer to Installation instructions.

Switching off

Turn the programme selector to **Off**.

End of programme when ...

... (Start/Reload) flashes and - - appears on the display panel.

Note: If display panel lighting is switched off, press any button → Energy
saving mode, page 5.

Interrupting the programme

Programmes at high temperatures:

- Cool washing: Select Rinse/ Spin.
- Press (Start/Reload).

Programmes at lower temperatures:

- Select Rinse/ Spin (deactivate (Extra rinse) button) or
 Empty.
- Press (Start/Reload).

Changing the programme if ...

... you have selected the wrong programme by mistake:

- Reselect the programme.
- Press (Start/Reload). The new programme starts from the
beginning.

Reloading laundry if ... → page 5

... Press (Start/Reload); both the symbols **YES** + are displayed on
the display panel. If **NO** is lit, the washing machine door cannot be opened.
Press (Start/Reload).

Individual settings

Option buttons

You can change the spin speed and the temperature before the selected programme starts and while it is running. The effects depend on the programme progress.

°C (Temperature)

You can change the displayed washing temperature. The maximum selectable temperature depends on the current programme.

⌚ (spin speed in rpm/⌚ (without final spin))

You can change the displayed spin speed. The maximum selectable spin speed depends on the model and which programme is currently selected.

⌚ (Ready in)

When you select the programme, the relevant programme duration is displayed. You can delay the end of the programme before it begins. The ready in-time can be set in increments of one hour up to a maximum of 24 hours. Press the ⌚ (Ready in) button until the required number of hours is displayed (h = hour). Choose ⏮ (Start/Reload).

Additional functions → Overview of programmes, page 7

speedPerfect For washing in a shorter time with a washing outcome comparable to that of the standard programme. Maximum load → Overview of programmes, page 7.

ecoPerfect For saving energy with a washing performance comparable to that of the standard programme.

(Reduced Ironing) Special spin sequence with subsequent fluffing. Gentle final spin: residual moisture in the laundry slightly increased.

(Extra rinse) Additional rinse cycle. For areas with very soft water or for further enhancing the spin result.

Childproof lock

in the display panel You can lock the washing machine to prevent the functions you have set from being changed inadvertently.

ON/OFF: after the start/end of the programme, press and hold ⏮ (Start/Reload) for approx. 5 seconds.

Note: The childlock can remain activated until you wish to start the next programme, even after switching off the machine.

Then you can deactivate the childlock before starting the programme and activate it again as necessary once the programme has started.

Note:

– The symbol is lit: Childlock active.

– The symbol flashes: Childlock active and then the programme selector is altered. To prevent the programme from stopping, move the programme selector back to the original programme, the symbol is lit again.

Reloading

YES + Press ⏮ (Start/Reload) if you want to add additional items of laundry after the programme has started. The machine checks whether reloading is possible.

YES + are lit: reloading is possible.

NO flashes: wait until **YES +** are lit.

Note: do not open the door until **both** the **YES +** symbols are lit.

NO: it is not possible to reload.

Note: for safety reasons, the washing machine door remains locked when the water level and/or temperature is high, or during spinning.

To continue the programme, press the ⏮ (Start/Reload) button.

Stain programmes

Do not let stains dry. Remove any solid residue beforehand. Sort items of laundry as usual and load the washing machine. The washing machine adjusts the washing temperature, drum movement and soaking times to suit the type of stain. Hot or cold water, gentle or intensive washing control (thanks to the new drum structure) and a long or short soaking time ensure that the wash programme has a special sequence for each type of stain.

The result: optimum stain treatment without the use of additional special detergents.

Energy saving mode

The display panel lighting goes out after a few minutes, ⏮ (Start/Reload) flashes. Press any button to switch on the lighting.

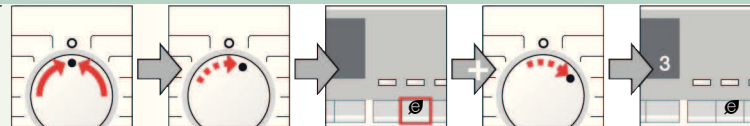
⏮ (Start/Reload)

To start the programme or to subsequently load additional laundry, and to activate/deactivate the childproof lock.

Individual settings

Signal

1. Activating the mode for setting the signal volume



Set to 0

1 step, the display panel lights up

press and hold

+ 1 step, release

3

2. Setting the volume for...



* if necessary, select the function several times

Button signals

Information signals

2

3

setting the volume*

setting the volume*

direct

1 step

set to 0

set to 0



Important information



Protecting the laundry and the machine

- When determining the dosage of all washing powders, additives and cleaning agents, you must follow the manufacturer's instructions..
- Empty all pockets
- Check for metal items (paper-clips, etc.).
- Wash delicates in a laundry bag (tights, curtains, underwired bras).
- Fasten zips, do up any buttons.
- Brush sand out of pockets and collars.
- Remove curtain fittings or place in the laundry bag.



Laundry with varying degrees of soiling

light		Wash new items of clothing separately. Do not prewash. If required, choose the additional function speedPerfect .
intense wash		Pre-treat any stains as necessary. Load less laundry. Choose a programme with a prewash.



Soaking Load laundry of the same colour.

Pour soaking agent/detergent into compartment II in accordance with the manufacturer's instructions. Turn the programme selector to **Cottons 30 °C** and press ⏮ (Start/Reload). After approx. 10 minutes, press ⏮ (Start/Reload) to pause the programme. Once the required soaking time has elapsed, press ⏮ (Start/Reload) again to continue the programme, or select a different programme.



Starch Laundry should not be treated with fabric softener.

Starching is possible in all wash programmes if liquid starch is used. Pour the starch in accordance with the manufacturer's instructions into fabric softener compartment (rinse first if necessary).



Dyeing / Bleaching

Dye should only be used in normal household quantities. Salt may damage stainless steel. Always follow the dye manufacturer's instructions. Do **not** use the washing machine for bleaching clothes.



Insert for liquid detergent depending on model

Position the insert for dispensing liquid detergent:

- Remove the detergent drawer completely → page 9
- Slide the insert forwards and click into place.

Do not use the insert (slide upwards): for gel detergents and washing powder, for programmes with + **Prewash** and end time option.



Overview of programmes

→ Refer to the table of consumption values on page 8, and advice and warnings on page 6.

Programmes	°C	max.	Type of laundry	Additional functions; Information
Cottons	— * - 90 °C	7 kg/ 4 kg*	hard-wearing fabrics, cottons or linen that can be washed at 90°C	speedPerfect *, ecoPerfect , (Reduced Ironing), (Extra rinse)
Easy-Care	— * - 60 °C		easy-care cotton, linen, synthetic or blended fabrics	speedPerfect , ecoPerfect , (Reduced Ironing), (Extra rinse)
Mix	* - 40 °C		cotton or synthetic fabrics	speedPerfect , ecoPerfect , (Reduced Ironing), (Extra rinse); different types of laundry can be washed together
Dark Wash	* - 40 °C	3.5 kg	dark cotton and dark synthetic fabrics	speedPerfect , ecoPerfect , (Reduced Ironing), (Extra rinse); reduced rinse and final spin cycle
Mud	—		hard-wearing and easy-care fabrics	(Reduced Ironing); optimum stain treatment → page 5
Grass	— * - 60 °C			
Sweat	—			
Delicate/Silk	* - 40 °C		for delicate fabrics, e.g., silk, satin, synthetic fibres or blended fabrics (e.g. curtains)	speedPerfect , ecoPerfect , (Reduced Ironing), (Extra rinse); no spin between rinse cycles
Wool	* - 40 °C	2 kg	hand/machine washable wool	particularly delicate wash programme to avoid shrinkage of laundry; longer programme breaks (fabrics rest in the detergent solution)
Super 15'	* - 40 °C		synthetic cotton, linen, synthetic fibres or blended fabrics	short programme of approx. 15 minutes, suitable for lightly soiled laundry
Sportswear	* - 40 °C		fabrics made from microfibre	speedPerfect , ecoPerfect , (Reduced Ironing), (Extra rinse)
Additional programmes				
* reduced load with additional function speedPerfect . For programmes without prewash, add detergent to compartment II. For prewash programmes, distribute the detergent between compartments I and II.				
Rinse/Spin, Empty				



Siemens Electrogeräte GmbH
Carl-Wery Str. 34
81739 Munich / Germany



Safety instructions

- Carefully read the instruction manual and the information enclosed, and act accordingly.
- Keep the machine's documentation for future reference.

Risk of electric shock!

- Never pull the cable to disconnect the mains plug!
- Never insert/disconnect the mains plug with damp hands.

Danger to life!

For worn-out appliances:

- Disconnect the mains plug.
- Sever the mains cable and discard along with the plug.
- Destroy the lock on the washing machine door. This will prevent children from locking themselves in and risking their lives.

Danger of suffocation!

- Keep packaging, film and packaging parts out of the reach of children.

Risk of poisoning!

- Keep detergents and care products out of the reach of children.

Risk of explosion!

- Items of laundry pretreated with cleaning agents containing solvents, e.g. stain remover/cleaning solvent may lead to an explosion after being loaded into the washing machine.
- Rinse items of laundry thoroughly by hand beforehand.

Risk of injury!

- The washing machine door may become very hot.
- Be careful when draining hot detergent solution.
- Do not climb onto the washing machine.
- Do not lean on the open washing machine door.
- Do not reach into the drum if it is still rotating.
- Be careful when opening the detergent drawer while the machine is in operation.

Consumption values depending on model

Programme	Load	Electricity***	Water***	Programme duration***
Cottons (cold)	7 kg	0.27 kWh	66 l	145 min
Cottons 30 °C*	7 kg	0.39 kWh	66 l	145 min
Cottons 40 °C*	7 kg	1.02 kWh	66 l	155 min
Cottons 60 °C*	7 kg	1.15 kWh	66 l	165 min
Cottons 90 °C	7 kg	2.10 kWh	76 l	155 min
Easy-Care 40 °C*	3.5 kg	0.64 kWh	55 l	103 min
Mix 40 °C	3.5 kg	0.54 kWh	47 l	60 min
Delicate/Silk 30 °C	2 kg	0.19 kWh	34 l	41 min
Wool 30 °C	2 kg	0.17 kWh	39 l	40 min

* Programme setting for testing in accordance with valid standard EN60456.
Note on comparative tests: For testing the test programmes, wash the specified load using the maximum spin speed.

Programme	Additional function	Load	Annual energy consumption	Annual water consumption
Cottons 40/60 °C	ecoPerfect **	7/3.5 kg	174 kWh	8140 l

** Programme setting for testing and energy labelling in accordance with EU directive 2010/30/EU with cold water (15 °C).
*** The values deviate from the indicated values depending on water pressure, hardness, and inlet temperature, ambient temperature, type, amount and soiling of the laundry, detergent used, fluctuations in the power supply and selected additional functions.

Care and cleaning



- Risk of electric shock! Disconnect the mains plug.
- Risk of explosion! Do not use solvents.



Before the first wash

Do not put laundry in the machine! Turn on the tap. Put into compartment II:

- approx. 2 litres of water
- detergent (measure according to the manufacturer's instructions for lightly soiled laundry and water hardness)

Turn the programme selector to **Easy-Care 60 °C** and press (**Start/Reload**). At the end of the programme, turn the programme selector to **Off**.



Machine housing, control panel

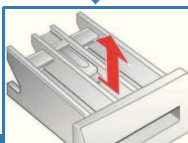
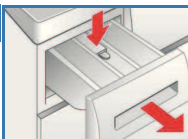
- Remove detergent and cleaning agent residue.
- Wipe with a soft, damp cloth.
- Do not wash the machine with a jet of water!



Cleaning the detergent drawer ...

... if it contains detergent or fabric softener residues.

1. Pull out, press insert down and remove drawer completely.
2. To remove the insert: press upwards from below with your finger.
3. For models with insert for liquid detergent: Slide the insert upwards and remove it from the back.
4. Clean the detergent dispenser tray and inserts with water and a brush and dry them.
5. Attach the insert and engage (connect the cylinder to the guide pin).
6. Push in the detergent drawer.



Leave the detergent drawer open so that any residual water can evaporate.



Drum

Leave the washing machine door open so that the drum can dry out.
For rust stains, use chlorine-free cleaning agent, not steel wool.



Descaling

Ensure there is no laundry in the machine!

This will not be necessary if the correct dosage of detergent is used. If it is, descale the appliance according to the manufacturer's instructions. Descaling products can be acquired on the website or from customer services → *Installation instructions*.



Emergency release

e.g. in the event of a power cut

The programme continues to run when the power has been restored. However, if the laundry has to be removed, the washing machine door can be opened as follows:

Risk of scalding!

The detergent solution and laundry may be hot. Let it cool.

Do not reach into the drum if it is still rotating.

Do not open the washing machine door if water can be seen through the glass.

1. Turn the programme selector to **Off** and disconnect the mains plug.
2. Drain the detergent solution → *page 10*.
3. Pull the emergency release downwards with a tool and release.
The washing machine door can then be opened.



Information on the display panel

depending on model

	Close the washing machine door properly; laundry may be caught.
E: 17 E: 29	Turn on the (cold water) tap fully, supply hose kinked or trapped; Clean the filter → <i>page 10</i> , water pressure too low.
E: 18	- Detergent solution pump blocked; Clean the detergent solution pump → <i>page 10</i> . - Drainage hose / waste pipe blocked; Clean the drainage hose at the siphon → <i>page 10</i> . - Heavy foam build-up → <i>page 11</i> , status indicator flashes.
E: 23 R: 10	Water in the base tub, appliance leaking. Call customer services! - Open the (hot water) tap fully. - Inlet hose kinked/trapped. - Water pressure too low. Clean the filter → <i>page 10</i> . - Hot water hose not connected; appliance will operate using cold water only. Ignore information, only for first wash cycle.
	Childproof lock activated: to deactivate → <i>page 5</i> .

Maintenance



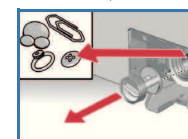
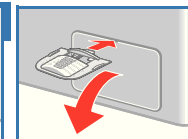
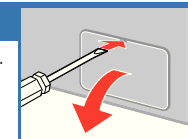
- Risk of burning!
Allow the detergent solution to cool.
- Turn off the tap.



Detergent solution pump

Turn the programme selector to **Off** and disconnect the mains plug.

1. Using a screwdriver or the insert for liquid detergent (depending on model), open and remove the service flap.
2. Remove the folding gutter and place a large enough container underneath.
3. **For models with a drainage hose:** Remove the drainage hose from the retainer and pull it from the housing.
Remove the sealing cap, allow the detergent solution to flow out into the container. Replace the sealing cap and place the drainage hose in the retainer.
- 3* **For models without a drainage hose:** Carefully unscrew the pump cover 180° or until the detergent solution begins to flow out on the folding gutter. When the container is full, close the pump cover and empty the container. Repeat the above steps until all the detergent solution has completely drained out.
4. Carefully unscrew the pump cover (there may be residual water).
5. Clean the interior, pump cover thread and pump housing (the impeller in the detergent solution pump must rotate).
6. Replace the pump cover and screw it tightly.
7. Return the drainage hose (depending on model) and the folding gutter to their start position.
8. Place the service flap back on and close.



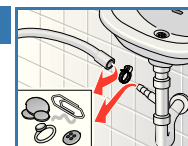
To prevent unused detergent from flowing straight into the drain during the next wash:
Pour 2 litres of water into compartment **II** and then start the **Empty** programme.



Drainage hose at the siphon

Turn the programme selector to **Off** and disconnect the mains plug.

1. Loosen the hose clamp, carefully remove the drainage hose (residual water).
2. Clean the drainage hose and siphon connecting piece.
3. Reattach the drainage hose and secure the connection with the hose clamp.



Filter in the water supply

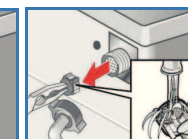
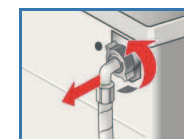
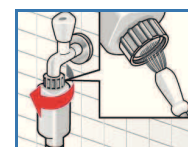


Risk of electric shock!

Do not immerse the Aqua-Stop safety device in water (contains an electric valve).

Reduce the water pressure in the supply hose:

1. Turn off the tap.
2. Select any programme (except **Rinse**/ **Spin**/ **Empty**).
3. Choose (**Start/Reload**). Let the programme run for approximately 40 seconds.
4. Turn the programme selector to **Off**. Disconnect the mains plug.
Clean the filter:
5. Disconnect the hose from the tap.
Clean the filter using a small brush.
and/or for Standard and Aqua-Secure models:
Remove the hose on the rear of the appliance.
Remove the filter with pliers and clean.
6. Connect the hose and check for leaks.



What to do if...

Water is leaking out	<ul style="list-style-type: none"> – Attach/replace the drainage hose correctly. – Tighten the screw connection of the supply hose.
No water supply. Detergent not dispensed.	<ul style="list-style-type: none"> – (Start/Reload) not selected? – Tap not turned on? – Filter blocked? Clean the filter → <i>page 10</i>. – Supply hose kinked or trapped?
The appliance door will not open.	<ul style="list-style-type: none"> – Safety function active. Programme stopped? → <i>page 4</i>. – (without final spin) selected? → <i>page 3, 4</i>. – Can be opened by emergency release only? → <i>page 9</i>. – Door locked after the washing machine is switched off: Switch on the washing machine and wait for 5 seconds.
The selected programme does not start.	<ul style="list-style-type: none"> – (Start/Reload) or (Ready in) time selected? – Washing machine door closed? – Childproof lock active? Deactivate → <i>page 5</i>.
Detergent solution is not drained.	<ul style="list-style-type: none"> – (without final spin) selected? → <i>page 3, 4</i>. – Clean the detergent solution pump → <i>page 10</i>. – Clean the waste pipe and/or drainage hose.
No water can be seen in the drum.	<ul style="list-style-type: none"> – Not a fault. Water remains inside below the visible area.
Spin result not satisfactory. Laundry wet/too damp.	<ul style="list-style-type: none"> – Not a fault. Spin control system has stopped the spin cycle. Uneven distribution of laundry. – Distribute large and small items of laundry evenly in the drum. – (Reduced Ironing) selected? → <i>page 5</i>. – Selected speed too low? → <i>page 5</i>.
Programme duration changes suddenly during operation.	<ul style="list-style-type: none"> – Not a fault. The program time can vary according to the distribution of laundry, with it therefore being possible for the display panel to show adjustments in the duration.
Spin cycle performed several times.	<ul style="list-style-type: none"> – Not a fault. The balance control system has detected an imbalance and is attempting to redress this by repeating the spin.
Residual water in the compartment for care products.	<ul style="list-style-type: none"> – Not a fault: the action of the care product is not affected. – Clean the compartment if necessary → <i>page 9</i>.
Odour formation in the washing machine.	<ul style="list-style-type: none"> – Run programme Cottons 90 °C without laundry. Use standard detergent.
Status display flashing. Appliance has detected a detergent overload.	<ul style="list-style-type: none"> – Too much detergent used? – If foam is escaping from the detergent drawer: mix 1 tablespoon of fabric softener with ½ litre of water and pour into compartment II (<i>not with outdoor or down fabrics</i>). – Reduce the detergent dosage for the next wash cycle.
Intense noise formation, vibrations and "wandering" during the spin cycle.	<ul style="list-style-type: none"> – Are the appliance feet fixed? – Secure the appliance feet → <i>Installation instructions</i>. – Transportation safety devices removed? – Remove transportation safety devices → <i>Installation instructions</i>.
Display panel/indicator lamps remain turned off while the machine is working.	<ul style="list-style-type: none"> – Energy-saving mode → <i>page 5</i>. – Power cut? – Fuses triggered? Reset/change the fuse. – If the fault occurs repeatedly, call customer services.
Programme sequence longer than usual.	<ul style="list-style-type: none"> – Not a fault. Unbalanced load detection system adjusts imbalance by repeatedly distributing the laundry. – Not a fault: foam detection system active; adds an additional rinse cycle.
Detergent residues on the laundry.	<ul style="list-style-type: none"> – Occasionally, phosphate-free detergents contain water-insoluble residues. – Select Rinse or Spin or brush out the laundry after washing.

If you cannot correct a fault yourself or if a repair is necessary:

- Turn the programme selector to **Off** and remove the mains plug from the socket.
- Turn off the water supply and call customer services → *Installation instructions*.



Observe the safety instructions on *page 8*!



Washing Machine

Instructions for use

en



Read these instructions and the separate installation instructions before operating the washing machine.

SIEMENS