







## Safety instructions

- Read the Instruction Manual and Installation Instructions and all other information enclosed with the washing machine and act accordingly.
- Retain the documents for subsequent use.

**Risk of electric shock**

- Never pull on the cable to disconnect the mains plug.
- Only insert/pull out the mains plug with dry hands.

**Danger to life**

For worn-out appliances:

- Disconnect the mains plug.
- Sever the mains cable and discard along with the plug.
- Destroy the lock on the washing machine door. This will prevent children from locking themselves in and risking their lives.

**Danger of suffocation**

- Keep packaging, film and packaging parts out of the reach of children.

**Risk of poisoning**

- Keep detergents and care products out of the reach of children.

**Risk of explosion**

- Items of laundry pretreated with cleaning agents containing solvents, e.g. stain remover/cleaning solvent may cause an explosion after being loaded into the washing machine.

Rinse items of laundry thoroughly by hand beforehand.

**Risk of injury**

- The washing machine door can become very hot.
- Be careful when emptying hot detergent solution.
- Do not climb onto the washing machine.
- Do not lean on the open washing machine door.
- Do not reach into the drum if it is still rotating.



## Important information



### Before washing for the first time

Do not put any laundry in the machine. Turn the tap on. Pour the following into compartment II:

- approx. **1 litre** water
- detergent (amount to be used according to the manufacturer's instructions for light soiling and according to water hardness)

Turn the programme selector to **Easy-Care 60 °C** and press **Start/Reload**. At the end of the programme, turn the programme selector to **Off**.



### Protecting the laundry and the machine

- When measuring detergent, care products and cleaning agents, follow the manufacturer's instructions.
- Empty pockets.
- Look out for metal items (paperclips, etc.).
- Wash delicates in a laundry bag (tights, curtains, underwired bras).
- Fasten zips, do up any buttons.
- Brush sand out of pockets and collars.
- Remove curtain fittings or place in the laundry bag.



### Loading laundry

Insert items of laundry of varying sizes. Take care not to trap items of laundry between the washing machine door and the rubber seal.



### Laundry with varying degrees of soiling

Wash new items of clothing separately.

light Do not pre-wash. If required, select the additional **speed Perfect** function.

heavy Pretreat any stains as necessary.



### Soaking

Load laundry of the same colour.

- Pour soaking agent/detergent into compartment II in accordance with the manufacturer's instructions.
- Turn the programme selector to **Cottons 30 °C** and press **Start/Reload**.
- After approx. 10 minutes, press **Start/Reload** to stop the programme.
- After the required soaking time, press **Start/Reload** again to continue the programme, or change the programme.



### Starching

Laundry must not be treated with fabric softener. Starching is possible in all wash programmes if liquid starch is used. Pour starch into the  **fabric softener** compartment in accordance with the manufacturer's instructions (rinse first if necessary).



### Dyeing / bleaching

Dye should only be used in normal household quantities. Salt may damage stainless steel. Always follow the dye manufacturer's instructions. Do **not** use the washing machine for bleaching clothes.



### Outdoor

Laundry must not be treated with fabric softener. Special detergent suitable for machine washing is available particularly in sports shops. For dosage information, see the manufacturer's instructions. Special detergent for outdoor clothing in compartment II. Turn the programme selector to **Outdoor**. Select the temperature and **Start/Reload**.



## Insert for liquid detergent model-dependent

Position the insert for dispensing liquid detergent:

- Remove the detergent drawer completely → **page 10**.
- Slide the insert forwards.

Do not use the insert (slide upwards):

- For gel-type detergents and washing powder,
- For programmes with **+ Prewash** or (Finished in) option



## Care

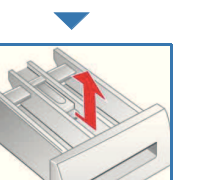
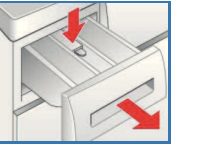
### Machine housing, control panel

- Remove detergent residue immediately.
- Wipe with a soft, damp cloth.
- Do not clean with a jet of water.

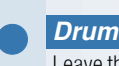
### Cleaning the detergent drawer ...

... if it contains detergent or fabric softener residues.

- Pull out, press insert down, remove drawer completely.
- To remove the insert: press the insert upwards from below with your finger.
- Clean the detergent dispenser tray and insert with water and a brush and dry it.
- Fit the insert and engage (connect the cylinder to the guide pin).
- Push in the detergent drawer.



Leave the detergent drawer open so that any residual water can evaporate.



### Drum

Leave the washing machine door open so that the drum can dry out. Use chlorine-free cleaning agent, not steel wool.

### Descaling Ensure there is no laundry in the machine

This should not be necessary if the correct detergent dosage has been used. If it is necessary, however, proceed according to the descaling agent manufacturer's instructions. Suitable descalers can be obtained via our website or from our after-sales service (→ **page 13**).

## Instructions in the display panel depending on model

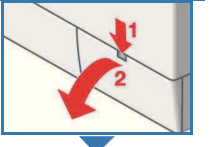
	Close the washing machine door properly; laundry may be caught.
E: 17, 29	Open the tap completely, supply hose kinked or trapped; Clean the filter → <b>page 11</b> , water pressure too low.
E: 18	Detergent solution pump blocked; Clean the detergent solution pump → <b>page 11</b> . Drain hose/waste pipe blocked; Clean the drain hose at the siphon → <b>page 11</b> .
E: 23	Water in the base tub, appliance leaking. Call the after-sales service.
Other displays	Switch off the appliance, wait for 5 seconds and switch it back on. If the display appears again, call the after-sales service → <b>page 13</b> .

## Information about blockages

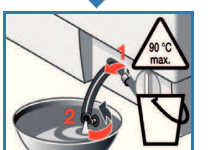
### Detergent solution pump

Turn the programme selector to **Off** and disconnect the mains plug.

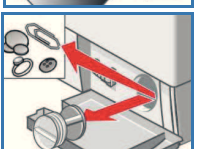
- Open and remove the service flap.



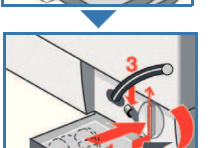
- Take the drain hose out of the retainer. Remove the sealing cap, allow the detergent solution to flow out. Push the sealing cap back on.



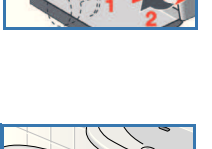
- Unscrew the pump cover carefully (residual water).



- Clean the interior, pump cover thread and pump housing (the impeller in the detergent solution pump must be able to rotate).



- Replace the pump cover and screw it on tightly. The handle points upright. Replace the drain hose in the holder.



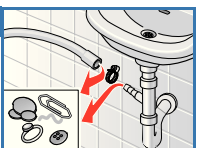
- Refit the service flap and close it.



To prevent unused detergent from flowing straight into the drain during the next wash: Pour 1 litre of water into compartment II and start the **Empty** programme.

### Drain hose on the siphon

Turn the programme selector to **Off** and disconnect the mains plug.



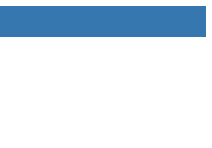
- Loosen the hose clamp, remove the drain hose carefully (residual water).
- Clean the drain hose and siphon connecting piece.
- Reattach the drain hose and secure the connection with the hose clamp.

### Filter in the water supply

**Risk of electric shock**  
Do not immerse the AquaStop safety device in water (contains electric valve).

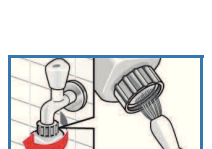
Reduce the water pressure in the supply hose:

- Turn off the tap.
- Select any programme (except **Spin** / **Empty**).
- Press **Start/Reload**. Let the programme run for approximately 40 seconds.
- Turn the programme selector to **Off**. Disconnect the mains plug.



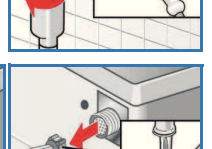
Clean the filter:

- Disconnect the hose from the tap.
- Clean the filter with a small brush.



**and/or** on standard and Aquasecure models:

Remove the hose from the back of the appliance, Remove the filter using pliers and clean the filter.



- Connect the hose and check for leaks.

## What to do if...

- Water is leaking out.
  - Attach/replace the drain hose correctly.
  - Tighten the screw connection of the supply hose.
- No water supply.
  - Start/Reload** not pressed?
  - Tap not turned on?
  - Filter blocked? Clean the filter → **page 11**.
  - Supply hose kinked or trapped?
- Washing machine door cannot be opened.
  - Safety function active. Programme stopped? → **page 4**.
  - Start/Reload** (Rinse hold = no final spin) selected? → **page 3, 4**.
  - Can be opened by emergency release only? → **page 13**.
- Programme does not start.
  - Start/Reload** pressed or **Finished in** time selected?
  - Washing machine door closed?
  - Childlock active? Deactivate → **page 5**.
- Detergent solution does not empty.
  - Start/Reload** (Rinse hold = no final spin) selected? → **page 3, 4**.
  - Clean the detergent solution pump → **page 11**.
  - Clean the waste pipe and/or drain hose.
- Water not visible in the drum.
  - Not a fault - water below the visible area.
- Spin result not satisfactory. Laundry wet/too damp.
  - Not a fault - the unbalanced-load detection system has interrupted the spin because the laundry is unevenly distributed. Distribute large and small items of laundry evenly in the drum.
  - Easy-Iron** selected? → **page 5**.
  - Speed selected too low? → **page 5**.
- The programme duration changes during the washing cycle.
  - Not a fault - the programme sequence is optimised for the relevant washing process. This can cause changes in the programme duration in the display panel.
- Repeated spin start-up.
  - Not a fault - unbalanced-load detection system is adjusting the imbalance.
- Residual water in the **Care** compartment for care products.
  - Not a fault - the action of the care product is not affected.
  - Clean the insert if necessary → **page 10**.
- Odour formation in the washing machine.
  - Run the **Cottons 90 °C** programme on the empty washing machine. Use standard detergent.
- Status indicator **flashing**.
  - Too much detergent used? Mix 1 tablespoon of fabric softener with 1/2 litre water and pour the mixture into compartment II. (Not for outdoor textiles or those made with down.)
  - Detergent may escape from the detergent drawer.
  - Reduce the detergent dosage for the next wash cycle.
- Pronounced generation of noise, vibration and "wandering" during the spin cycle.
  - Are the appliance feet fixed? Secure appliance feet → **Installation instructions**.
  - Transportation safety devices removed? Remove transportation safety devices → **Installation instructions**.
- Noises during spinning and emptying.
  - Clean the detergent solution pump → **page 11**.
- Display panel/indicator lamps do not function during operation.
  - Power cut?
  - Circuit breakers tripped? Switch the circuit breakers back on or replace.
  - Energy saving mode active?
  - If a fault occurs repeatedly, call the after-sales service.
- Programme sequence longer than usual.
  - Not a fault - unbalanced-load detection system is adjusting the imbalance by repeatedly redistributing the laundry.
  - Not a fault - foam detection system active - adds an additional rinse cycle.
- There are detergent residues on the laundry.
  - In isolated cases, phosphate-free detergents contain water-insoluble residues.
  - Select **Rinse** or brush down the laundry after washing.

## What to do if...

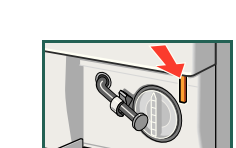
- In Add laundry mode, **Start/Reload** flashes very quickly and a signal sounds
    - Water level too high. Not possible to add more laundry. Close the washing machine door immediately if necessary.
    - Press **Start/Reload** to continue the programme.
- If you cannot correct a fault yourself (switching on/off) or a repair is required:
- Turn the programme selector to **Off** and pull the mains plug out of the socket.
  - Turn off the tap and call the after-sales service → **page 13**.

## Emergency release e.g. in the event of a power cut

The programme continues when the power supply is restored. However, if the laundry has to be removed, the washing machine door can be opened as follows:



**Risk of scalding**  
The detergent solution and laundry may be hot. If possible, leave to cool down. Do not reach into the drum if it is still rotating. Do not open the washing machine door if water can be seen through the glass.



- Turn the programme selector to **Off** and pull out the mains plug.
- Empty the detergent solution → **page 11**.
- Pull the emergency release downwards with a tool and release. Washing machine door can then be opened.

## After-sales service

- If you cannot remedy the fault yourself (What to do if ... → **page 12, 13**), contact our after-sales service. We will always find a suitable solution to avoid unnecessary visits by repair personnel.
- The contact details of your nearest after-sales service can be found here or in the after-sales service directory (model-dependent).
  - GB** 0844 8928999 (Calls from a BT landline will be charged at up to 3 pence per minute. A call set-up fee of up to 6 pence may apply).
  - IE** 01450 2655
- Please give the after-sales service the product number (E-Nr.) and the production number (FD) of the appliance.
 

E-Nr. _____	FD _____
Product number	Production number

This information can be found: on the inside of the washing machine door\* / open service flap\* and on the rear of the appliance. \*depending on the model

**Trust the manufacturer's competence.** Turn to us. By doing so, you will ensure that the repair is carried out by trained service technicians equipped with original spare parts



## Observe the safety instructions on page 8.



## Washing machine

## Instruction manual

Do not operate this washing machine until you have read these instructions and the separate installation instructions.



## en



SIEMENS



# Your washing machine

**Congratulations** - you have chosen a modern, high-quality domestic appliance manufactured by Siemens. This washing machine is distinguished by its economical water and energy consumption.

Each machine that leaves our factory has been inspected thoroughly to ensure that it functions properly and is in perfect condition.

For more information on our products, accessories, replacement parts and services, see our website [www.siemens-home.com](http://www.siemens-home.com) or contact our after-sales service centres.

## Contents

	Page
Intended use .....	1
Programmes .....	1
Setting and adjusting the programme .....	3
Washing .....	3/4
After washing .....	4
Individual settings .....	5/6
Overview of programmes .....	7
Safety instructions .....	8
Consumption values .....	8
Important information .....	9
Insert for liquid detergent .....	10
Care .....	10
Information on the display panel .....	10
Instructions for blockages .....	11
What to do if .....	12/13
Emergency release .....	13
After-sales service .....	13



### Protection of the environment/Conservation tips

- Always fill the washing machine with a maximum amount of laundry for the relevant programme.
- Wash normally soiled laundry without a prewash.
- Instead of **Cottons 90 °C**, select the **Cottons 60 °C** programme and the additional **eco Perfect** function. Comparable cleaning result with significantly lower energy consumption.
- Measure the detergent according to the manufacturer's instructions and water hardness.
- If you want to dry the laundry in the tumble dryer afterwards, select a spin speed suggested by the dryer manufacturer.

## Intended use

- For domestic use only
- For washing machine-washable fabrics and hand-washable wool in detergent solution
- To be operated with cold drinking water and commercially available detergents and care products which are suitable for use in washing machines.



- Do not leave children unattended near the washing machine.
- The washing machine is not to be used by children or persons not familiar with the operating instructions.
- Keep pets away from the washing machine.

## Programmes

Detailed overview of programmes → page 7.  
Temperature and spin speed can be selected individually, depending on the selected programme and programme progress.

<b>Cottons</b>	Hard-wearing fabrics
+ Prewash	Hard-wearing fabrics, prewash at 30 °C
<b>Easy-Care</b>	Easy-care fabrics
+ Prewash	Easy-care fabrics, pre-wash at 30 °C
<b>Mix</b>	Different types of laundry
<b>Delicate/Silk</b>	Delicate washable fabrics
<b>Wool</b>	Hand/machine-washable wool
<b>Rinse</b>	Power rinse + with spin
<b>Spin</b>	Extra spin with selectable spin speed
<b>Empty</b>	Empty the rinsing water when  (Rinse hold = no final spin) is activated
<b>Low Spin</b>	Extra spin with reduced spin speed
<b>Super 15'</b>	Super Quick programme
<b>Outdoor</b>	All-weather, sportswear and outdoor wear → page 9
<b>Shirts/Business</b>	Non-iron shirts
<b>Easy Care Plus</b>	Dark-coloured fabrics

## Preparation



Install correctly, according to the separate installation instructions.



### Check the machine

- Never use a damaged machine.
- Inform the after-sales service.



### Connect the mains plug



- Make sure your hands are dry.
- Take hold of the plug only.



### Turn the tap on

Insert for liquid detergent (depending on model), page 10

**Compartment II:** detergent for main wash, water softener, bleach, stain remover

**Compartment** : fabric softener, starch

**Compartment I:** detergent for prewash

### Programme selector

### Display panel / Options buttons

**i** Programme selector for switching the machine on and off and for selecting the programme. Can be turned in either direction.

**i** All buttons are sensitive and need only to be touched lightly. If you press and hold the (Finished in) option button, the appliance automatically runs through the settings options.

- 90 °C	°C (Temp.)	Select
- 1600*	(rpm)	Select spin, panel
1 - 24 h	(Finished in)	Program
Status indicators		Program
		Washing
		Child lock
		Open door

**Before washing for the first time**  
Run a wash cycle without any laundry → page 9

## Sorting and loading the laundry

Follow the manufacturer's care information. According to the information on the care labels. According to type, colour, soiling and temperature. Do not exceed the maximum load → page 7.

Observe the important information → page 9. Insert items of laundry of varying sizes.

Close the washing machine door. Take care not to trap items of laundry between the washing machine door and the rubber seal.

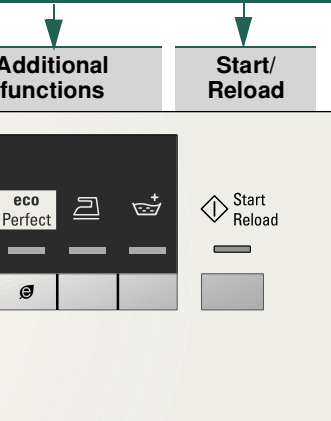
## Adding detergent and care products

Measure accordingly: The amount of laundry, level of soiling, water hardness (ask your water supply company) and manufacturer's instructions.

On models without an insert for liquid detergent: Pour liquid detergent into the appropriate dispenser and place in the drum. During operation: open the detergent drawer with care.

**i** Dilute thick fabric softener and conditioner with water. This prevents blockages.

## Set\* and adjust the programme



**i** \*If the symbol is lit in the display panel, Childlock active → Deactivate it, page 5.

Additional functions and options buttons → Individual settings, page 5

Press **Start/Reload**

Set the temperature (\* = cold)

Set the spin speed (\* depending on the model) or (Rinse hold = no final laundry remains in the water after the final rinse, - - - appears in the display panel).

Programme end after

Programme status indicators:

Pause, rinse, spin, programme duration or end (- -)

Child lock → page 5

To open the washing machine door, add laundry → page 4, 5

# Washing



1

2



3

Detergent drawer with compartments I, II,

Washing machine door

Control panel

Washing machine door handle

Drum interior light (depending on model) comes on when the door is opened or closed, or when a programme is started; goes out automatically.

Serviceflap

## Switch off

Turn the programme selector to **Off**.

## Turn off the tap

Not required for AquaStop models → Refer to Installation instructions.

## Remove the washing

Open the washing machine door and remove the washing. If (Rinse hold = no final spin) active: turn the programme selector to **Empty** or **Spin**. Select the spin speed if necessary. Press **Start/Reload**.



- Remove any foreign objects - risk of rusting.
- Leave the washing machine door and detergent drawer open so that any residual water can dry away.

## End of programme when ...

... the **Start/Reload** button is off and - - appears in the display panel.



If the display panel lighting is off, press any button → Energy-saving mode, page 5.

## Cancel the programme

Programmes at high temperatures:

- To cool the laundry: select **Rinse**.
- Press **Start/Reload**.

Programmes at low temperatures:

- Select **Spin** or **Empty**.
- Press **Start/Reload**.

## Change the programme if...

... you have selected the wrong programme by mistake:

- Reselect the programme.
- Press **Start/Reload**. The new programme starts from the beginning.

## Top up laundry, if ... → page 5

... **Start/Reload** is pressed and then **both** of the **YES** + symbols are lit in the display panel. If is lit, the washing machine door cannot be opened. Press the **Start/Reload** button.

# Individual settings

## Options buttons

The spin speed and temperature can be changed before and during the selected programme. The effects depend on the programme progress.

## °C (Temperature)

You can change the displayed washing temperature. The maximum washing temperature that can be selected depends on the programme that has been set.

## ⌚ (Spin speed rpm) / ⌚ (Rinse hold = no final spin)

You can change the spin speed shown or select ⌚ (Rinse hold = no final spin, laundry remains in the water after the last rinse, - - - appears in the display panel). You can change the spin speed shown. The maximum selectable spin speed depends on the model and on which programme is currently selected.

## ⌚ (Finished in)

When you select the programme, the relevant progr. duration is displayed. You can delay the start of the programme before it begins. The "Finished in" time can be set in increments of one hour up to a max. of 24 hours. Press the ⌚ (Finished in) button repeatedly until the desired number of hours is displayed (h = hour). Press **Start/Reload**.

## Additional functions → and overview of programmes, page 7

<b>speed Perfect</b>	For washing in a shorter time with a washing result comparable to that of the standard programme. Maximum load → Overview of programmes, page 7.
<b>eco Perfect</b>	For saving energy with a washing performance comparable to that of the standard programme.
(Easy-Iron)	Special spin sequence with subsequent fluffing. Gentle final spin at reduced speed. Residual moisture in the laundry is increased slightly.
(Extra Rinse)	Increased water level. Gentler treatment of the laundry.

## Childlock

You can lock the washing machine to prevent the functions you have set from being changed inadvertently.

**ON/OFF:** after the start/end of the programme, press and hold **Start/Reload** for approx. 5 seconds.

Note: The childlock can remain activated until you wish to start the next programme, even after switching off the machine.

Then you can deactivate the childlock before starting the programme and activate it again as necessary once the programme has started.

Note:

- The symbol is lit: Childlock active.
- The symbol flashes: Childlock active and then the programme selector is altered. To prevent the programme from stopping, move the programme selector back to the original programme, the symbol is lit again.

## Add laundry

If you want to add additional items of laundry after the programme has started, press the **YES +** in the display panel

**YES +** are lit: Adding laundry is possible.

flashing: Wait until **YES +** are lit.

Note: Only open the washing machine door when **both** the **YES +** symbols are lit.

: It is not possible to add laundry.

Note: for safety reasons, the washing machine door remains locked when the water level and/or temperature is high, or during spinning.

To continue the programme, press the **Start/Reload** button.

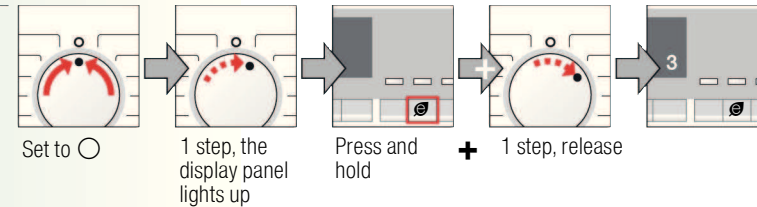
## Energy saving mode

If the washing machine is switched on and is not operated for several minutes before the programme starts or at the end of the programme, the display panel light goes out and the **Start/Reload** button flashes. Press any button to turn the light back on.

# Individual settings

## Signal

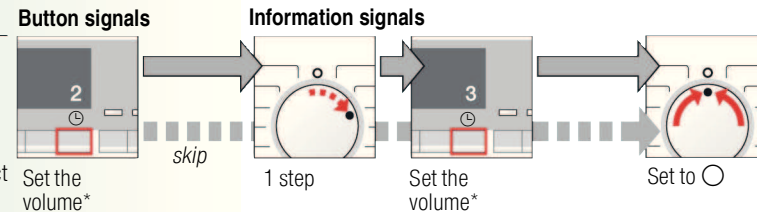
1. Activating the mode for setting the signal volume



2. Set the volume for ...



\* you may need to select the function several times.



## Start/Reload

To start the programme or to subsequently load additional laundry, and to activate/deactivate the childlock.

# Overview of programmes

→ Check the consumption values table on page 8 and the instructions on page 9.



**Additional functions; options; information**

**Programmes**      °C      max.      Type of laundry

<b>Cottons</b> ↓ + Prewash	* - 90 °C	8 kg/ 5 kg*	Hard-wearing fabrics, heat-resistant fabrics made of cotton or linen	⊖ <b>speed</b> Perfect, <b>eco</b> Perfect,  (Easy-Iron),  (Extra Rinse); ⊖ (Rinse hold = no final spin)
<b>Easy-Care</b> ↓ + Prewash	* - 60 °C		Easy-care fabrics made of cotton, linen, synthetic fibres or blended fabrics	⊖ <b>speed</b> Perfect, <b>eco</b> Perfect,  (Easy-Iron),  (Extra Rinse); ⊖ (Rinse hold = no final spin)
<b>Mix</b>	* - 40 °C	3.5 kg	Fabrics made of cotton or easy-care fabrics	⊖ <b>speed</b> Perfect, <b>eco</b> Perfect,  (Easy-Iron),  (Extra Rinse); ⊖ (Rinse hold = no final spin); different types of laundry can be washed together
<b>Easy Care Plus</b>	* - 40 °C		Dark-coloured fabrics made of cotton and dark easy-care fabrics	⊖ <b>speed</b> Perfect, <b>eco</b> Perfect,  (Easy-Iron),  (Extra Rinse); ⊖ (Rinse hold = no final spin); reduced rinse and final spin
<b>Delicate/Silk</b>	* - 40 °C		For delicate, washable fabrics, e.g. made of silk, satin, synthetic fibres or blended fabrics (e.g. curtains)	⊖ <b>speed</b> Perfect, <b>eco</b> Perfect,  (Easy-Iron),  (Extra Rinse); ⊖ (Rinse hold = no final spin); no spin between the rinse cycles
<b>Wool</b>	* - 40 °C		Hand or machine-washable fabrics made of wool or containing wool	⊖ (Rinse hold = no final spin); Particularly gentle wash programme to prevent shrinkage of laundry. Longer programme breaks (fabrics rest in the detergent solution)
<b>Super 15'</b>	* - 40 °C	2 kg	Easy-care fabrics made of cotton, linen, synthetic fibres or blended fabrics	⊖ (Rinse hold = no final spin); Short programme, approx. 15 minutes, suitable for lightly soiled laundry
<b>Shirts/Business</b>	* - 40 °C		Non-iron shirts made of cotton, linen, synthetic fibres or blended fabrics	⊖ <b>speed</b> Perfect, <b>eco</b> Perfect,  (Easy-Iron),  (Extra Rinse); ⊖ (Rinse hold = no final spin); spin only briefly, then hang up to drip dry
<b>Outdoor</b>	* - 40 °C		All-weather, sports and outdoor wear fabrics including fabrics with weatherproof membrane	⊖ <b>speed</b> Perfect, <b>eco</b> Perfect,  (Extra Rinse); reduced final spin in intervals

## Additional programmes

\* reduced load when using the additional **speed** Perfect function.

i As a **short programme**, **Mix 40 °C** is ideal, when **maximum spin speed** is selected.

Programmes without prewash - add detergent to compartment **II**, programmes with prewash - distribute the detergent between compartments **I** and **II**.

**Rinse**, **Spin**, **Empty**, **Low Spin**

0111 / 9000634594



WM12S468ME

Siemens Electrogeräte GmbH  
Carl-Wery-Str. 34  
81739 München / Deutschland





## Safety instructions

- Read the Instruction Manual and Installation Instructions and all other information enclosed with the washing machine and act accordingly.
- Retain the documents for subsequent use.

### Risk of electric shock

- Never pull on the cable to disconnect the mains plug.
- Only insert/pull out the mains plug with dry hands.

### Danger to life

- For worn-out appliances:
- Disconnect the mains plug.
  - Sever the mains cable and discard along with the plug.
  - Destroy the lock on the washing machine door. This will prevent children from locking themselves in and risking their lives.

### Danger of suffocation

- Keep packaging, film and packaging parts out of the reach of children.

### Risk of poisoning

- Keep detergents and care products out of the reach of children.

### Risk of explosion

- Items of laundry pretreated with cleaning agents containing solvents, e.g. stain remover/cleaning solvent may cause an explosion after being loaded into the washing machine.
- Rinse items of laundry thoroughly by hand beforehand.

### Risk of injury

- The washing machine door can become very hot.
- Be careful when emptying hot detergent solution.
- Do not climb onto the washing machine.
- Do not lean on the open washing machine door.
- Do not reach into the drum if it is still rotating.

## Consumption values

Programme	Load	Electricity**	Water***	Programme duration***
Cottons 30 °C*	8 kg	0.35 kWh	76 l	2:20 h
Cottons 40 °C*	8 kg	0.97 kWh	76 l	2:30 h
Cottons 60 °C*	8 kg	1.36 kWh	76 l	2:40 h
Cottons 90 °C	8 kg	2.34 kWh	87 l	2:30 h
Mix 40 °C*	3.5 kg	0.47 kWh	49 l	1:01 h
Easy-Care 40 °C*	3.5 kg	0.55 kWh	55 l	1:43 h
Delicates/Silk 30 °C	2 kg	0.14 kWh	35 l	0:41 h
Wool 30 °C	2 kg	0.16 kWh	40 l	0:40 h

\* Programme setting for testing in accordance with applicable standard EN60456.  
Note on comparative tests: When using the test programmes, wash the specified load using the maximum spin speed.

Programme	Additional function	Load	Annual energy consumption	Annual water consumption
Cottons 40/ 60 °C	eco Perfect**	8/4 kg	189 kWh	10500 l

\*\* Programme setting for testing and energy labelling in accordance with EU directive 2010/30/EU with cold water (15 °C).

\*\*\* The values may deviate from the specified values depending on water pressure, water hardness, and inlet temperature, ambient temperature, type, amount and level of laundry soiling, detergent used, fluctuations in the power supply and selection of additional functions.



## Important information



### Before washing for the first time

- Do not put any laundry in the machine. Turn the tap on. Pour the following into compartment II:
- approx. **1 litre** water
  - detergent (amount to be used according to the manufacturer's instructions for light soiling and according to water hardness)
- Turn the programme selector to **Easy-Care 60 °C** and press **Start/Reload**.  
At the end of the programme, turn the programme selector to **Off**.



### Protecting the laundry and the machine

- When measuring detergent, care products and cleaning agents, follow the manufacturer's instructions.
- Empty pockets.
- Look out for metal items (paperclips, etc.).
- Wash delicates in a laundry bag (tights, curtains, underwired bras).
- Fasten zips, do up any buttons.
- Brush sand out of pockets and collars.
- Remove curtain fittings or place in the laundry bag.



### Loading laundry

- Insert items of laundry of varying sizes.  
Take care not to trap items of laundry between the washing machine door and the rubber seal.



### Laundry with varying degrees of soiling

- Wash new items of clothing separately.
- |       |  |  |
|-------|--|--|
| light |  | Do not pre-wash. If required, select the additional <b>speed Perfect</b> function. |
|       |  | Pretreat any stains as necessary.  |
| heavy |  | Do not load as much laundry. Select the programme with Prewash.                    |



### Soaking

Load laundry of the same colour.

- Pour soaking agent/detergent into compartment **II** in accordance with the manufacturer's instructions.
- Turn the programme selector to **Cottons 30 °C** and press **Start/Reload**.
- After approx. 10 minutes, press **Start/Reload** to stop the programme.
- After the required soaking time, press **Start/Reload** again to continue the programme, or change the programme.



### Starching

Laundry must not be treated with fabric softener

- Starching is possible in all wash programmes if liquid starch is used. Pour starch into the fabric softener compartment in accordance with the manufacturer's instructions (rinse first if necessary).



### Dyeing / bleaching

- Dye should only be used in normal household quantities. Salt may damage stainless steel. Always follow the dye manufacturer's instructions. Do **not** use the washing machine for bleaching clothes.



### Outdoor

Laundry must not be treated with fabric softener.

- Special detergent suitable for machine washing is available particularly in sports shops. For dosage information, see the manufacturer's instructions. Special detergent for outdoor clothing in compartment **II**.

Turn the programme selector to **Outdoor**. Select the temperature and **Start/Reload**.


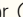


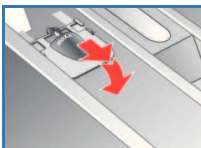
## Insert for liquid detergent model-dependent

Position the insert for dispensing liquid detergent:

- Remove the detergent drawer completely → *page 10*.
- Slide the insert forwards.

Do not use the insert (slide upwards):

- For gel-type detergents and washing powder,
- For programmes with **+ Prewash**  or  (Finished in) option



## Care



- **Risk of electric shock.** *Disconnect the mains plug.*
- **Risk of explosion.** *No solvents.*

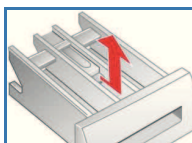
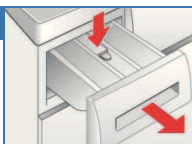
### Machine housing, control panel

- Remove detergent residue immediately.
- Wipe with a soft, damp cloth.
- Do not clean with a jet of water.

### Cleaning the detergent drawer ...

... if it contains detergent or fabric softener residues.

1. Pull out, press insert down, remove drawer completely.
2. To remove the insert: press the insert upwards from below with your finger.
3. Clean the detergent dispenser tray and insert with water and a brush and dry it.
4. Fit the insert and engage (connect the cylinder to the guide pin).
5. Push in the detergent drawer.



Leave the detergent drawer open so that any residual water can evaporate.


### Drum

Leave the washing machine door open so that the drum can dry out. Use chlorine-free cleaning agent, not steel wool.

### Descaling Ensure there is no laundry in the machine

This should not be necessary if the correct detergent dosage has been used. If it is necessary, however, proceed according to the descaling agent manufacturer's instructions. Suitable descalers can be obtained via our website or from our after-sales service (→ *page 13*).

## Instructions in the display panel depending on model

 flashing	Close the washing machine door properly; laundry may be caught.
E: 17, 29	Open the tap completely, supply hose kinked or trapped; Clean the filter → <i>page 11</i> , water pressure too low.
E: 18	Detergent solution pump blocked; Clean the detergent solution pump → <i>page 11</i> . Drain hose/waste pipe blocked; Clean the drain hose at the siphon → <i>page 11</i> .
E: 23	Water in the base tub, appliance leaking. Call the after-sales service.
Other displays	Switch off the appliance, wait for 5 seconds and switch it back on. If the display appears again, call the after-sales service → <i>page 13</i> .

## Information about blockages



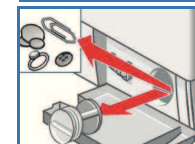
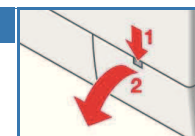
- Risk of scalding!**
- Allow the detergent solution to cool down.
- Turn off the tap.

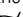


### Detergent solution pump

Turn the programme selector to **Off** and disconnect the mains plug.

1. Open and remove the service flap.
2. Take the drain hose out of the retainer. Remove the sealing cap, allow the detergent solution to flow out. Push the sealing cap back on.
3. Unscrew the pump cover carefully (residual water).
4. Clean the interior, pump cover thread and pump housing (the impeller in the detergent solution pump must be able to rotate).
5. Replace the pump cover and screw it on tightly. The handle points upright. Replace the drain hose in the holder.
6. Refit the service flap and close it.



To prevent unused detergent from flowing straight into the drain during the next wash: Pour 1 litre of water into compartment **II** and start the  **Empty** programme.



### Drain hose on the siphon

Turn the programme selector to **Off** and disconnect the mains plug.

1. Loosen the hose clamp, remove the drain hose carefully (residual water).
2. Clean the drain hose and siphon connecting piece.
3. Reattach the drain hose and secure the connection with the hose clamp.

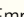




### Filter in the water supply

#### Risk of electric shock

*Do not immerse the AquaStop safety device in water (contains electric valve).*

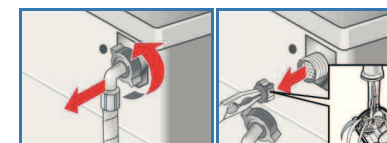
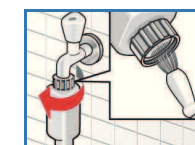
Reduce the water pressure in the supply hose:

1. Turn off the tap.
2. Select any programme (except  Spin /  Empty).
3. Press  **Start/Reload**. Let the programme run for approximately 40 seconds.
4. Turn the programme selector to **Off**. Disconnect the mains plug.

Clean the filter:

5. Disconnect the hose from the tap. Clean the filter with a small brush.
- and/or** on standard and Aquasecure models:  
Remove the hose from the back of the appliance, Remove the filter using pliers and clean the filter.

6. Connect the hose and check for leaks.





## What to do if...

Water is leaking out.	<ul style="list-style-type: none"> <li>– Attach/replace the drain hose correctly.</li> <li>– Tighten the screw connection of the supply hose.</li> </ul>
No water supply. Detergent not flushed into machine.	<ul style="list-style-type: none"> <li>–  <b>Start/Reload</b> not pressed?</li> <li>– Tap not turned on?</li> <li>– Filter blocked? Clean the filter → <i>page 11</i>.</li> <li>– Supply hose kinked or trapped?</li> </ul>
Washing machine door cannot be opened.	<ul style="list-style-type: none"> <li>– Safety function active. Programme stopped? → <i>page 4</i>.</li> <li>–  (Rinse hold = no final spin) selected? → <i>page 3, 4</i>.</li> <li>– Can be opened by emergency release only? → <i>page 13</i>.</li> </ul>
Programme does not start.	<ul style="list-style-type: none"> <li>–  <b>Start/Reload</b> pressed or  (Finished in) time selected?</li> <li>– Washing machine door closed?</li> <li>– Childlock active? Deactivate → <i>page 5</i>.</li> </ul>
Detergent solution does not empty.	<ul style="list-style-type: none"> <li>–  (Rinse hold = no final spin) selected? → <i>page 3, 4</i>.</li> <li>– Clean the detergent solution pump → <i>page 11</i>.</li> <li>– Clean the waste pipe and/or drain hose.</li> </ul>
Water not visible in the drum.	<ul style="list-style-type: none"> <li>– Not a fault - water below the visible area.</li> </ul>
Spin result not satisfactory. Laundry wet/too damp.	<ul style="list-style-type: none"> <li>– Not a fault - the unbalanced-load detection system has interrupted the spin because the laundry is unevenly distributed. Distribute large and small items of laundry evenly in the drum.</li> <li>–  (Easy-Iron) selected? → <i>page 5</i>.</li> <li>– Speed selected too low? → <i>page 5</i>.</li> </ul>
The programme duration changes during the washing cycle.	<ul style="list-style-type: none"> <li>– Not a fault - the programme sequence is optimised for the relevant washing process. This can cause changes in the programme duration in the display panel.</li> </ul>
Repeated spin start-up.	<ul style="list-style-type: none"> <li>– Not a fault - unbalanced-load detection system is adjusting the imbalance.</li> </ul>
Residual water in the  compartment for care products.	<ul style="list-style-type: none"> <li>– Not a fault - the action of the care product is not affected.</li> <li>– Clean the insert if necessary → <i>page 10</i>.</li> </ul>
Odour formation in the washing machine.	<ul style="list-style-type: none"> <li>– Run the  <b>Cottons 90 °C</b> programme on the empty washing machine. Use standard detergent.</li> </ul>
Status indicator  flashing. Detergent may escape from the detergent drawer.	<ul style="list-style-type: none"> <li>– Too much detergent used? Mix 1 tablespoon of fabric softener with ½ litre water and pour the mixture into compartment <b>II</b>. (<i>Not for outdoor textiles or those made with down.</i>)</li> <li>– Reduce the detergent dosage for the next wash cycle.</li> </ul>
Pronounced generation of noise, vibration and “wandering” during the spin cycle.	<ul style="list-style-type: none"> <li>– Are the appliance feet fixed? Secure appliance feet → <i>Installation instructions</i>.</li> <li>– Transportation safety devices removed? Remove transportation safety devices → <i>Installation instructions</i>.</li> </ul>
Noises during spinning and emptying.	<ul style="list-style-type: none"> <li>– Clean the detergent solution pump → <i>page 11</i>.</li> </ul>
Display panel/indicator lamps do not function during operation.	<ul style="list-style-type: none"> <li>– Power cut?</li> <li>– Circuit breakers tripped? Switch the circuit breakers back on or replace.</li> <li>– Energy saving mode active?</li> <li>– If a fault occurs repeatedly, call the after-sales service.</li> </ul>
Programme sequence longer than usual.	<ul style="list-style-type: none"> <li>– Not a fault - unbalanced-load detection system is adjusting the imbalance by repeatedly redistributing the laundry.</li> <li>– Not a fault - foam detection system active - adds an additional rinse cycle.</li> </ul>
There are detergent residues on the laundry.	<ul style="list-style-type: none"> <li>– In isolated cases, phosphate-free detergents contain water-insoluble residues.</li> <li>– Select  <b>Rinse</b> or brush down the laundry after washing.</li> </ul>

## What to do if...

- In Add laundry mode, **Start/Reload** flashes very quickly and a signal sounds
  - Water level too high. Not possible to add more laundry. Close the washing machine door immediately if necessary.
  - Press **Start/Reload** to continue the programme.

If you cannot correct a fault yourself (switching on/off) or a repair is required:

- Turn the programme selector to **Off** and pull the mains plug out of the socket.
- Turn off the tap and call the after-sales service → *page 13*.

## Emergency release e.g. in the event of a power cut



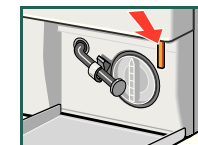
The programme continues when the power supply is restored. However, if the laundry has to be removed, the washing machine door can be opened as follows:



### Risk of scalding

*The detergent solution and laundry may be hot. If possible, leave to cool down. Do not reach into the drum if it is still rotating. Do not open the washing machine door if water can be seen through the glass.*

1. Turn the programme selector to **Off** and pull out the mains plug.
2. Empty the detergent solution → *page 11*.
3. Pull the emergency release downwards with a tool and release. Washing machine door can then be opened.



## After-sales service

● If you cannot remedy the fault yourself (What to do if ..., → *page 12, 13*), contact our after-sales service. We will always find a suitable solution to avoid unnecessary visits by repair personnel.

● The contact details of your nearest after-sales service can be found here or in the after-sales service directory (model-dependent).

- **GB** 0844 8928999 (Calls from a BT landline will be charged at up to 3 pence per minute. A call set-up fee of up to 6 pence may apply).

– **IE** 01450 2655

● Please give the after-sales service the product number (E-Nr.) and the production number (FD) of the appliance.

**E-Nr.** \_\_\_\_\_ **FD** \_\_\_\_\_

Product number

Production number

*This information can be found:  
on the inside of the washing machine door\* /  
open service flap\* and on the rear of the appliance.  
\*depending on the model*

● **Trust the manufacturer's competence.** Turn to us. By doing so, you will ensure that the repair is carried out by trained service technicians equipped with original spare parts



*Observe the  
safety instructions  
on page 8.*



**Washing  
machine**

**Instruction manual**

**en**



Do not operate this washing machine until  
you have read these instructions and the  
separate installation instructions.

**SIEMENS**