

Your washing machine

Congratulations - you have opted for a modern, high-quality domestic appliance manufactured by Siemens. This washing machine is distinguished by its economical water and energy consumption. Each machine that leaves our factory is inspected thoroughly to ensure that it functions properly and is in perfect condition. For more information on our products, accessories, replacement parts and services, see our website www.siemens-home.com or contact our after-sales service centres.

Contents

Intended use	1
Programmes	1
Setting and adjusting the programme	3
Washing	3/4
After washing	4
Individual settings	5/6
Overview of programmes	7
Safety instructions	8
Consumption values	8
Important information	9
Insert for liquid detergent	10
Care	10
Information on the display panel	10
Instructions for blockages	11
What to do if...	12/13
Emergency release	13
After-sales service	13

Protection of the environment/Conservation tips

- Always fill the washing machine with a maximum amount of laundry for the relevant programme.
- Wash normally soiled laundry without a prewash.
- Instead of **Cottons/Coloureds 90 °C**, select **Eco 60 °C** and the **Intensive Wash** additional function. Comparable cleaning result with significantly lower energy consumption.
- Measure the detergent according to the manufacturer's instructions and water hardness.
- If the laundry is then dried in the tumble dryer, select the appropriate spin speed according to the instructions of the dryer manufacturer.

Intended use

- For domestic use only
- For machine-washable fabrics and hand-washable wool in detergent solution
- To be operated with cold drinking water and commercially available detergents and care products which are suitable for use in washing machines

Do not leave children unattended near the washing machine.

- The washing machine is not to be used by children or persons not familiar with the operating instructions.
- Keep pets away from the washing machine.

Preparation

Check the machine

- Never use a damaged machine.
- Inform the after-sales service.

Connect the mains plug

- Make sure your hands are dry.
- Take hold of the plug only.

Turn the tap on

Programmes

Detailed programme overview → page 7. The spin speed can be selected on an individual basis, irrespective of which programme is selected and how far through it is.

Cottons/Coloureds	Hard-wearing fabrics
Eco	Hard-wearing fabrics
Mixed Fabrics	Different types of laundry
Rapid 15'	SuperQuick programme, also suitable as a rinse programme
Spin	Extra spin with selectable spin speed
Empty	the rinsing water when Ø is activated (Rinse Stop = no final spin)
Wool	Hand/machine-washable wool
Delicates/Silk	Delicate washable fabrics
Easy-Care	Easy-care fabrics

Preparation

Before washing for the first time
Run a wash cycle without any laundry → page 9

Sorting and loading the laundry

Follow the manufacturer's care information. According to the information on the care labels. According to type, colour, soiling and temperature. Do not exceed the maximum load → page 7.

Observe the important information → page 9. Insert items of laundry of varying sizes.

Adding detergent and care products

Measure accordingly: Amount of laundry, level of soiling, water hardness (ask your water supply company) and manufacturer's instructions. Models without insert for liquid detergent: Pour liquid detergent into the appropriate dispenser and place in the drum. During operation: Open the detergent drawer with care.

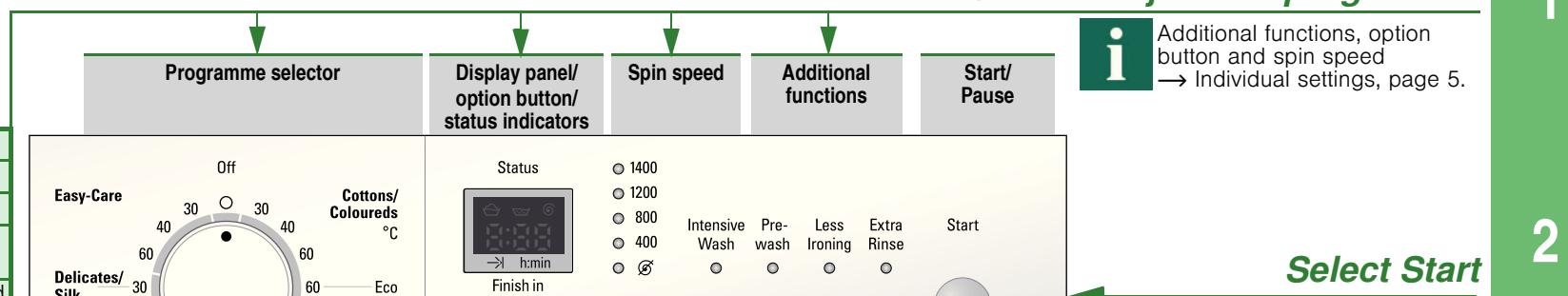
Insert for liquid detergent (depending on model), page 10

Compartment II: detergent for main wash, water softener, bleach, stain remover

Compartment Ø: fabric softener, starch

Compartment I: Detergent for prewash

Dilute thick fabric softener and care products with water. This prevents blockages.



Washing

Switching off

Turn the programme selector to **Off**.

Turning the tap off

Not required for AquaStop models → *Installation instructions*, page 7.

Removing the laundry

Open the washing machine door and remove the laundry. If Ø (Rinse Stop = no Final spin) is active: Turn the programme selector to **Empty** or select the spin speed. Select **Start**.

- Remove any foreign objects - risk of rusting.
- Leave the washing machine door and detergent drawer open so that any residual water can dry away.

End of programme when ...

... **Start** flashes and - Ø - appears in the display panel.

Cancel the programme

Programmes at high temperatures:
- Cool laundry: Select **Rapid 15'**.
- Select **Start**.

Programmes at lower temperatures:
- Select **Spin** or **Empty**.
- Select **Start**.

Change the programme if...

... you have selected the wrong programme by mistake:
- Reselect the programme.
- Select **Start**. The new programme starts from the beginning.

Cancel programme

- Select **Start**. - P - in the display panel.
- if required, add laundry (do not leave the washing machine door open for too long as water from the laundry could leak out).
- Select **Start**.



Individual settings

Option button Finish in

When you select the programme, the relevant programme duration is displayed. You can delay the start of the programme before it begins. The Finish in time can be set in increments of one hour up to a maximum of 24 hours. Press the **Finish in** button repeatedly until the required number of hours is displayed (h = hour). Select **Start**. It is not possible to make adjustments once the programme has started.

Spin speed (rpm) / Ø (Rinse Stop = no final spin)

You can change the spin speed shown or select Ø (Rinse Stop = no final spin, laundry remains in the water after the last rinse, display panel -- --). The maximum selectable spin speed depends on the model and on which programme is currently selected.

Additional functions → and overview of programmes, page 7

Intensive Wash Extend the washing time for a more intensive washing of heavily soiled items.

Prewash For heavily soiled items. Prewash at 30 °C.

Less Ironing Special spin sequence with subsequent fluffing. Gentle final spin at reduced speed. Residual moisture in the laundry is increased slightly.

Extra Rinse Additional rinse cycle. For areas with very soft water or for further enhancing the washing result.

Start

For starting or interrupting the programme.



Individual settings

Audible signal

1. Activate the mode for setting the signal volume

Set to 0 → 1 step to the right → Press and hold → + 1 step to the right → Release

2. Set the volume for ...

1 step to the right → Setting the volume* → 1 step to the right → Setting the volume* → Set to 0

* you may need to select the function several times.



Overview of programmes

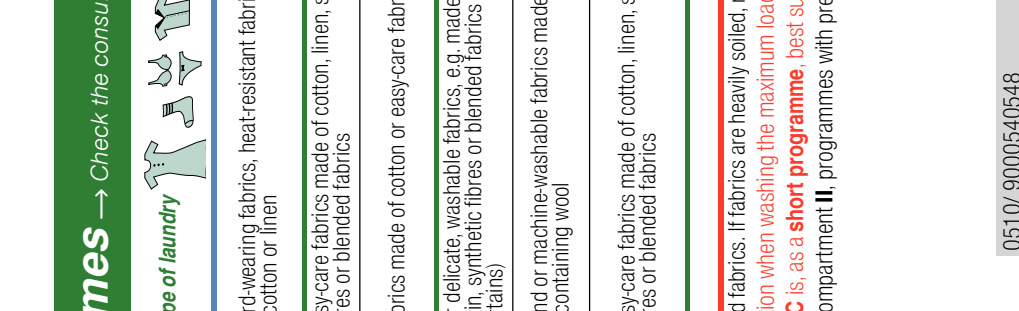
Check the consumption values table on page 8 and the instructions on page 9.

Additional functions; options; information

Programmes	°C	max.	Type of laundry
Cottons/Coloureds	30, 40, 60, 90 °C	8 kg*	Hard-wearing fabrics, heat-resistant fabrics made of cotton or linen
Eco	60 °C		
Easy-Care	30, 40, 60 °C	3,5 kg*	Easy-care fabrics made of cotton, linen, synthetic fibres or blended fabrics
Mixed Fabrics	40 °C		Fabrics made of cotton or easy-care fabrics
Delicates/Silk	30 °C		For delicate, washable fabrics, e.g. made of silk, satin, synthetic fibres or blended fabrics (e.g. curtains)
Wool	cold, 30 °C	2 kg	Hand or machine-washable fabrics made of wool or containing wool
Rapid 15'	30 °C		Easy-care fabrics made of cotton, linen, synthetic fibres or blended fabrics

Additional programmes

1 The programmes are time-controlled for lightly soiled fabrics. If fabrics are heavily soiled, reduce the load or select an additional function, e.g. **Intensive Wash**. Always select the additional **Intensive Wash** function when washing the maximum load with programmes marked with *. Regardless of the type of laundry, **Easy-Care 40 °C** is as a **short programme**, best suited to max spin speed. Programmes without prewash - add detergent to compartment II, programmes with prewash - distribute the detergent between compartments I and II.



051019000540548

WM14P360GB
WM12P360GB
WM14P36SGB

Siemens-Elektrogeräte GmbH
Carl-Wen-Str. 34
81739 München, Deutschland

Safety instructions

- Read the Instruction manual and Installation instructions and all other information enclosed with the washing machine and act accordingly.
 - Retain the documents for subsequent use.
- Risk of electric shock**
- Never pull on the cable to disconnect the mains plug.
 - Only insert/pull out the mains plug with dry hands.
- Danger to life**
- For worn-out appliances:
- Disconnect the mains plug.
 - Sever the mains cable and remove with the plug.
 - Destroy the lock on the washing machine door. This will prevent children from locking themselves in and risking their lives.
- Danger of suffocation**
- Keep packaging, film and packaging parts out of the reach of children.
- Risk of poisoning**
- Keep detergents and care products out of the reach of children.
- Risk of explosion**
- Items of laundry pretreated with cleaning agents containing solvents, e.g. stain remover/cleaning solvent may cause an explosion after being loaded into the washing machine. Rinse items of laundry thoroughly by hand beforehand.
- Risk of injury**
- The washing machine door can become very hot.
 - Be careful when emptying hot detergent solution.
 - Do not climb onto the washing machine.
 - Do not lean on the open washing machine door.
 - Do not reach into the drum if it is still rotating.

Consumption values

Programme	Additional function	Load	Electricity consumption***	Water***	Programme duration***
Cottons/Coloureds 30 °C**	Intensive Wash	8 kg	0.61 kWh	80 l	2:12 h
Cottons/Coloureds 40 °C**	Intensive Wash	8 kg	0.94 kWh	80 l	2:12 h
Cottons/Coloureds 60 °C**	Intensive Wash	8 kg	1.65 kWh	80 l	2:12 h
Eco 60 °C**	Intensive Wash	8 kg	1.20 kWh	56 l	3:25 h
Cottons/Coloureds 90 °C	Intensive Wash	8 kg	2.73 kWh	97 l	2:12 h
Easy-Care 40 °C**	Intensive Wash	3.5 kg	0.55 kWh	53 l	1:12 h
Easy-Care 40 °C** (also suitable as a short programme)	-	3.5 kg	0.54 kWh	53 l	0:45 h
Delicates/Silk 30 °C	-	2 kg	0.20 kWh	39 l	0:40 h
Wool cold	-	2 kg	0.08 kWh	40 l	0:36 h
Wool 30 °C	-	2 kg	0.20 kWh	40 l	0:36 h

* Programme setting for testing and energy labelling in accordance with EU Directive 92/75/EEC.
 ** Programme setting for testing in accordance with applicable standard EN60456.
 Note on comparative tests: When testing the test programmes, wash the specified load using the maximum spin speed.
 As a **short programme** for coloureds, select the **Easy-Care 40 °C** programme, using maximum spin speed.
 ***The values deviate from the indicated values depending on water pressure, hardness, and inlet temperature, ambient temperature, type, amount and soiling of the laundry, detergent used, fluctuations in the power supply and selected additional functions.

Important information

- Before washing for the first time**
- Do not put any laundry in the machine. Turn the tap on. Pour into compartment **II**: approx. 1 litre water – detergent (dosage according to the manufacturer's instructions for light soiling and according to water hardness) Turn the programme selector to **Easy-Care 60 °C** and choose **Start**. At the end of the programme, turn the programme selector to **Off**.
- Protecting the laundry and the machine**
- When determining the dosage of all washing powders, additives and cleaning agents, you must follow the manufacturer's instructions.
 - Empty pockets.
 - Look out for metal items (paperclips, etc.).
 - Wash delicates in a laundry bag (tights, curtains, underwired bras).
 - Fasten zips, do up any buttons.
 - Brush sand out of pockets and collars.
 - Remove certain fittings or place in the laundry bag.
- Loading items of laundry**
- Insert items of laundry of varying sizes. Take care not to trap items of laundry between the washing machine door and the rubber seal.
- Laundry with varying degrees of soiling**
- Wash new items of clothing separately.
- light Do not prewash. Pretreat any stains as necessary. Select **Intensive Wash** additional function as necessary.
- heavy Do not load as much laundry. Select the program with Prewash. Pretreat any stains as necessary. Select **Intensive Wash** additional function as necessary.
- Soaking** Load laundry of the same colour. Pour soaking agent/detergent into compartment **II** in accordance with the manufacturer's instructions. Turn the programme selector to **Cottons/Coloureds 30 °C** and select **Start**. After approx. 10 minutes, press **Start**, to pause the programme. Once the required soaking time has elapsed, press **Start**, again to continue the programme, or select a different programme.
- Starching** Laundry must not be treated with fabric softener. Starching is possible in all wash programmes if liquid starch is used. Pour starch into the ☉ fabric softener compartment in accordance with the manufacturer's instructions (rinse first if necessary).
- Dyeing/bleaching** Dye should only be used in normal household quantities. Salt may damage stainless steel. Always follow the dye manufacturer's instructions. Do **not** use the washing machine for bleaching clothes.

8

Insert for liquid detergent

- Position the insert for dispensing liquid detergent:
- Remove the detergent drawer completely → page 10.
 - Slide the insert forwards.
- Do not use the insert (slide upwards):
- For gel detergents and washing powder
 - For programmes with **Prewash** or the **Finish** in option

Care

- Machine housing, control panel**
- Wipe with a soft, damp cloth.
 - Remove detergent and cleaning agent residue immediately.
 - Do not clean with a jet of water.
- Cleaning the detergent drawer ...** ... if it contains detergent or fabric softener residues.
1. Pull out, press insert down, remove drawer completely.
 2. To remove the insert: press the insert upwards from below with your finger.
 3. Clean the detergent dispenser tray and insert with water and a brush and dry it.
 4. Fit the insert and engage (connect the cylinder to the guide pin).
 5. Push in the detergent drawer.
- Leave the detergent drawer open** so that any residual water can evaporate.
- Drum** Leave the washing machine door open so that the drum can dry out. Rust stains - use chlorine-free cleaning agent, not steel wool.
- Descaling** Ensure there is no laundry in the machine. This should not be necessary if the correct detergent dosage has been used. If it is necessary, however, proceed according to the descaling agent manufacturer's instructions. Suitable descalers can be obtained via our website or from our after-sales service (→ page 13).

9

Information about blockages

- Detergent solution pump** Turn the programme selector to **Off** and disconnect the mains plug.
1. Open and remove the service flap.
 2. Take the drainage hose out of the retainer. Remove the sealing cap, allow the detergent solution to flow out. Push the sealing cap back on.
 3. Unscrew the pump cover carefully (residual water).
 4. Clean the interior, pump cover thread and pump housing (the impeller in the detergent solution pump must be able to rotate).
 5. Replace the pump cover and screw it on tightly. The handle points upright. Replace the drainage hose in the holder.
 6. Refit the service flap and close it.
- To prevent unused detergent from flowing straight into the drain during the next wash: Pour 1 litre of water into compartment **II** and start the **Empty** programme.
- Drainage hose at the siphon** Turn the programme selector to **Off** and disconnect the mains plug.
1. Loosen the hose clamp, remove the drainage hose carefully (residual water).
 2. Clean the drainage hose and siphon connecting piece.
 3. Reattach the drainage hose and secure the connection with the hose clamp.
- Filter in the water supply** Reduce the water pressure in the supply hose:
1. Turn off the tap.
 2. Select any programme (except for Spin/Empty).
 3. Select **Start**. Let the programme run for approximately 40 seconds.
 4. Turn the programme selector to **Off**. Disconnect the mains plug.
- Clean the filter:
5. Disconnect the hose from the tap. Clean the filter with a small brush.
- and/or** for Standard and Aqua-Secure models: Remove the hose from the rear of the appliance. Remove the filter with pliers and clean.
6. Connect the hose and check for leaks.

11

What to do if...

- Water is leaking out. – Attach/replace the drainage hose correctly. – Tighten the screw connection of the supply hose.
- No water supply. Detergent not dispensed. – **Start** not selected? – Tap not turned on? – Filter blocked? Clean the filter → page 11. – Supply hose kinked or trapped?
- Washing machine door cannot be opened. – Safety function active. Programme termination? → page 4. – Ø (Rinse Stop = no final spin) selected? → page 3,4. – Can be opened by emergency release only? → page 13.
- Programme does not start. – **Start** or **Finish** in time selected? – Washing machine door closed?
- Detergent solution does not empty. – Ø (Rinse Stop = no final spin) selected? → page 3,4. – Clean the detergent solution pump → page 11. – Clean the waste pipe and/or drainage hose.
- Water not visible in the drum. – Not a fault - water below the visible area.
- Spin result not satisfactory. Laundry wet/too damp. – No fault - the unbalanced-load detection system interrupted spinning, uneven laundry distribution. Distribute large and small items of laundry evenly in the drum. – **Less Ironing** selected? → page 5. – Speed selected too low? → page 5.
- The programme duration changes during the wash cycle. – Not a fault – the programme sequence is optimised for the particular wash process. This may result in changes to the programme duration in the display field.
- Drum spins gently several times. – Not a fault - unbalanced-load detection system is adjusting the imbalance.
- Residual water in the compartment ☉ for care products. – Not a fault - the action of the care product is not affected. – Clean the insert if necessary → page 10.
- Odour formation in the washing machine. – Run programme **Cottons/Coloureds 90 °C** without laundry. Use standard detergent.
- Status display ☉ (Wash) flashes. Detergent may be leaking out of the detergent drawer. – Too much detergent used? Mix 1 tablespoon of fabric softener with ½ litre of water and pour into compartment **II** (not with outdoor or down fabrics). – Reduce the detergent dosage for the next wash cycle.
- Loud spinning, vibrations and "wandering" during the spin cycle. – Are the appliance feet fixed? Secure appliance feet → *Installation instructions*. – Transportation safety devices removed? Remove transportation safety devices → *Installation instructions*.
- Noises during spin and drain cycles. – Clean detergent-solution pump → page 10
- Display panel/indicator lamps do not function during operation. – Power cut? – Circuit breakers tripped or fuses blown? Reset the circuit breakers or change the fuses. – If the fault occurs repeatedly, call the after-sales service.
- Programme Status longer than usual. – Not a fault - unbalanced-load detection system is adjusting the imbalance by repeatedly redistributing the laundry. – Not a fault - foam detection system active - adds an additional rinse cycle.

What to do if ...

- There are detergent residues on the laundry. – Occasionally, phosphate-free detergents contain water-insoluble residues. – Select **Rapid 15'** or brush out the laundry after washing.
 - – **P** – in the display panel. – **Start** selected. – To continue the programme, press **Start**.
 - In pause mode, **Start** flashes very quickly and a signal sounds. – Water level too high. Not possible to add more laundry. Close the washing machine door immediately if necessary. – To continue, press the Start button.
- If you cannot correct a fault yourself (switching on/off) or a repair is required:
- Turn the programme selector to **Off** and remove the mains plug from the socket.
 - Turn off the water supply and call the after-sales service → *Installation instructions*.

Emergency release e.g. in the event of a power cut

- The programme continues when the power supply is restored. However, if the laundry has to be removed, the washing machine door can be opened as follows:
- Risk of scalding** The detergent solution and laundry may be hot. If possible, leave to cool down. Do not reach into the drum if it is still turning. Do not open the washing machine door if you can see water through the glass.
1. Turn the programme selector to **Off** and disconnect the mains plug.
 2. Drain the detergent solution → page 10.
 3. Pull the emergency release downwards with a tool and release. Washing machine door can then be opened.

After-sales service

- If you cannot remedy the fault yourself (What to do if ... → page 12, 13), contact our after-sales service. We will always find a suitable solution to avoid unnecessary visits by repair personnel.
 - You will find the contact data for your closest after-sales service in the after-sales service directory (depending on model). – **GB** 0844 8928999 Calls from a BT landline will be charged at up to 3 pence per minute. A call set-up fee of up to 6 pence may apply. – **IE** 01450 2655
 - Please give the after-sales service the product number (E no.) and the production number (FD) of the appliance.
- E-Nr.** _____ **FD** _____
- Product number Production number
- This information can be found: on the inside of the washing machine door*/ opened service flap* and rear of the appliance. *depending on model*
- **Trust the manufacturer's competence.** Turn to us. You will thereby ensure that the repairs are performed by trained service personnel equipped with original repair parts.

Washing machine

Instruction manual

Read these instructions and the separate Installation instructions before operating the washing machine.

SIEMENS

en

10

Your washing machine

Congratulations - you have opted for a modern, high-quality domestic appliance manufactured by Siemens. This washing machine is distinguished by its economical water and energy consumption.

Each machine that leaves our factory is inspected thoroughly to ensure that it functions properly and is in perfect condition.

For more information on our products, accessories, replacement parts and services, see our website www.siemens-home.com or contact our after-sales service centres.

Contents

	Page
Intended use	1
Programmes	1
Setting and adjusting the programme	3
Washing	3/4
After washing	4
Individual settings	5/6
Overview of programmes	7
Safety instructions	8
Consumption values	8
Important information	9
Insert for liquid detergent	10
Care	10
Information on the display panel	10
Instructions for blockages	11
What to do if.....	12/13
Emergency release	13
After-sales service	13



Protection of the environment/Conservation tips

- Always fill the washing machine with a maximum amount of laundry for the relevant programme.
- Wash normally soiled laundry without a prewash.
- Instead of **Cottons/Coloureds 90 °C**, select **Eco 60 °C** and the **Intensive Wash** additional function. Comparable cleaning result with significantly lower energy consumption.
- Measure the detergent according to the manufacturer's instructions and water hardness.
- If the laundry is then dried in the tumble dryer, select the appropriate spin speed according to the instructions of the dryer manufacturer.

Intended use

- For domestic use only
- For machine-washable fabrics and hand-washable wool in detergent solution
- To be operated with cold drinking water and commercially available detergents and care products which are suitable for use in washing machines



- Do not leave children unattended near the washing machine.
- The washing machine is not to be used by children or persons not familiar with the operating instructions.
- Keep pets away from the washing machine.

Programmes

Detailed programme overview → page 7.

The spin speed can be selected on an individual basis, irrespective of which programme is selected and how far through it is.

Cottons/Coloureds	Hard-wearing fabrics
Eco	Hard-wearing fabrics
Mixed Fabrics	Different types of laundry
Rapid 15'	SuperQuick programme, also suitable as a rinse programme
Spin	Extra spin with selectable spin speed
Empty	the rinsing water when \emptyset is activated (Rinse Stop = no final spin)
Wool	Hand/machine-washable wool
Delicates/Silk	Delicate washable fabrics
Easy-Care	Easy-care fabrics

Preparation



Correct installation according to the separate Installation instructions.



Check the machine

- Never use a damaged machine.
- Inform the after-sales service.

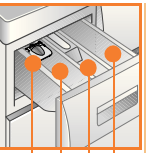


Connect the mains plug

- Make sure your hands are dry.
- Take hold of the plug only.



Turn the tap on



Insert for liquid detergent (depending on model), page 10.

Compartment II: detergent for main wash, water softener, bleach, stain remover

Compartment \otimes : fabric softener, starch

Compartment I: Detergent for prewash

Programme selector

Display panel/option button/status indicators

Spin speed

i Programme selector for switching the machine on and off and for selecting the programme. Can be turned in either direction.

1 - 24 Finish in	Programme en
Status indicators	Programme Sta
- -	Wash, Rinse, S
- - -	Rinse Stop rea
- P -	Pause

Before washing for the first time
Run a wash cycle without any laundry → page 9

Sorting and loading the laundry

Follow the manufacturer's care information. According to the information on the care labels. According to type, colour, soiling and temperature. Do not exceed the maximum load → page 7.

Observe the important information → page 9. Insert items of laundry of varying sizes.

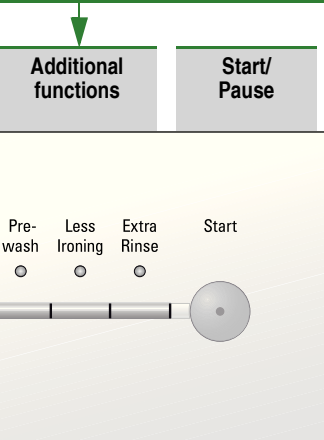
Close the washing machine door. Take care not to trap items of laundry between the washing machine door and the rubber seal.

Adding detergent and care products

Measure accordingly: amount of laundry, level of soiling, water hardness (ask your water supply company) and manufacturer's instructions. Models without insert for liquid detergent: pour liquid detergent into the appropriate dispenser and place in the drum. During operation: Open the detergent drawer with care.

i Dilute thick fabric softener and care products with water. This prevents blockages.

Set and adjust the programme

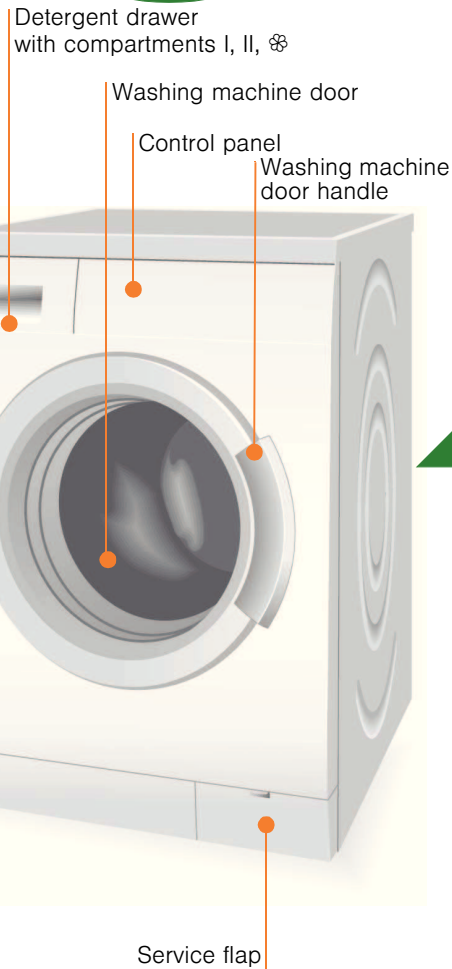


i Additional functions, option button and spin speed → Individual settings, page 5.

Select Start

i All buttons are sensitive and need only to be touched lightly. If you press and hold the **Finish in** option button for too long, the appliance automatically cycles through the setting options.

Washing



Washing



Switching off

Turn the programme selector to **Off**.



Turning the tap off

Not required for AquaStop models → *Installation instructions, page 7.*



Removing the laundry

Open the washing machine door and remove the laundry. If ☼ (Rinse Stop = no Final spin) is active: Turn the programme selector to **Empty** or select the spin speed. Select **Start**.



- Remove any foreign objects - risk of rusting.
- Leave the washing machine door and detergent drawer open so that any residual water can dry away.

1

2

3

End of programme when ...

... **Start** flashes and – – appears in the display panel.

Cancel the programme

Programmes at high temperatures:

- Cool laundry: Select **Rapid 15'**.
- Select **Start**.

Programmes at lower temperatures:

- Select **Spin** or **Empty**.
- Select **Start**.

Change the programme if...

... you have selected the wrong programme by mistake:

- Reselect the programme.
- Select **Start**. The new programme starts from the beginning.

Cancel programme

- Select **Start**. – **P** – in the display panel.
- if required, add laundry (do not leave the washing machine door open for too long as water from the laundry could leak out).
- Select **Start**.

Individual settings

Option button Finish in

When you select the programme, the relevant programme duration is displayed. You can delay the start of the programme before it begins. The Finish in time can be set in increments of one hour up to a maximum of 24 hours. Press the **Finish in** button repeatedly until the required number of hours is displayed (h = hour). Select **Start**. It is not possible to make adjustments once the programme has started.

Spin speed (rpm) / ∅ (Rinse Stop = no final spin)

You can change the spin speed shown or select ∅ (Rinse Stop = no final spin, laundry remains in the water after the last rinse, display panel ---). The maximum selectable spin speed depends on the model and on which programme is currently selected.

Additional functions → and overview of programmes, page 7

Intensive Wash	Extend the washing time for a more intensive washing of heavily soiled items.
Prewash	For heavily soiled items. Prewash at 30 °C.
Less Ironing	Special spin sequence with subsequent fluffing. Gentle final spin at reduced speed. Residual moisture in the laundry is increased slightly.
Extra Rinse	Additional rinse cycle. For areas with very soft water or for further enhancing the washing result.

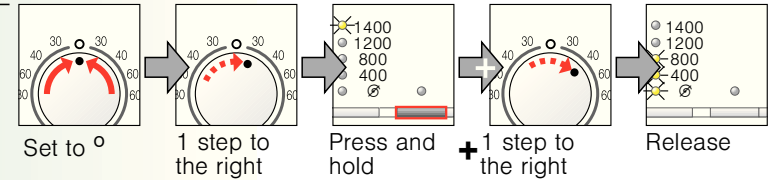
Start

For starting or interrupting the programme.

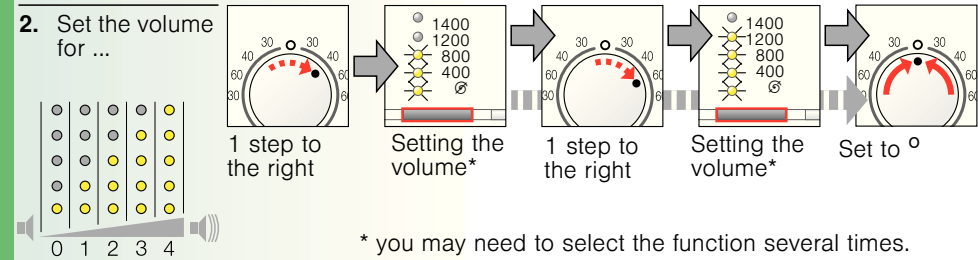
Individual settings

Audible signal

1. Activate the mode for setting the signal volume



2. Set the volume for ...



* you may need to select the function several times.

Overview of programmes → Check the consumption values table on page 8 and the instructions on page 9.



Additional functions; options; information

Programmes	°C	max.	Type of laundry
Cottons/ Coloureds	30, 40, 60, 90 °C	8 kg*	Hard-wearing fabrics, heat-resistant fabrics made of cotton or linen
Eco	60 °C		
Easy-Care	30, 40, 60 °C	3.5 kg*	Easy-care fabrics made of cotton, linen, synthetic fibres or blended fabrics
Mixed Fabrics	40 °C		Fabrics made of cotton or easy-care fabrics
Delicates/Silk	30 °C		For delicate, washable fabrics, e.g. made of silk, satin, synthetic fibres or blended fabrics (e.g. curtains)
Wool	cold, 30 °C	2 kg	Hand or machine-washable fabrics made of wool or containing wool
Rapid 15'	30 °C		Easy-care fabrics made of cotton, linen, synthetic fibres or blended fabrics

Additional programmes

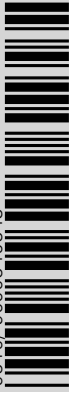
i The programmes are time-controlled for lightly soiled fabrics. If fabrics are heavily soiled, reduce the load or select an additional function, e.g. **Intensive Wash**.

Always select the additional **Intensive Wash** function when washing the maximum load with programmes marked with *.

Regardless of the type of laundry, **Easy-Care 40 °C** is, as a **short programme**, best suited to max. spin speed.

Programmes without prewash - add detergent to compartment **II**, programmes with prewash - distribute the detergent between compartments **I** and **II**.

0510/ 9000540548



WM14P360GB
WM12P360GB
WM14P36SGB

Siemens-Electrogeräte GmbH
Carl-Wery-Str. 34
81739 München / Deutschland



Safety instructions

- Read the Instruction manual and Installation instructions and all other information enclosed with the washing machine and act accordingly.
- Retain the documents for subsequent use.

- Risk of electric shock**
- Never pull on the cable to disconnect the mains plug.
 - Only insert/pull out the mains plug with dry hands.

- Danger to life**
- For worn-out appliances:
- Disconnect the mains plug.
 - Sever the mains cable and remove with the plug.
 - Destroy the lock on the washing machine door. This will prevent children from locking themselves in and risking their lives.

- Danger of suffocation**
- Keep packaging, film and packaging parts out of the reach of children.

- Risk of poisoning**
- Keep detergents and care products out of the reach of children.

- Risk of explosion**
- Items of laundry pretreated with cleaning agents containing solvents, e.g. stain remover/cleaning solvent may cause an explosion after being loaded into the washing machine. Rinse items of laundry thoroughly by hand beforehand.

- Risk of injury**
- The washing machine door can become very hot.
 - Be careful when emptying hot detergent solution.
 - Do not climb onto the washing machine.
 - Do not lean on the open washing machine door.
 - Do not reach into the drum if it is still rotating.

Consumption values

Programme	Additional function	Load	Electricity consumption***	Water***	Programme duration***
Cottons/Coloureds 30 °C**	Intensive Wash	8 kg	0.61 kWh	80 l	2:12 h
Cottons/Coloureds 40 °C**	Intensive Wash	8 kg	0.94 kWh	80 l	2:12 h
Cottons/Coloureds 60 °C**	Intensive Wash	8 kg	1.65 kWh	80 l	2:12 h
Eco 60 °C**	Intensive Wash	8 kg	1.20 kWh	56 l	3:25 h
Cottons/Coloureds 90 °C	Intensive Wash	8 kg	2.73 kWh	97 l	2:12 h
Easy-Care 40 °C**	Intensive Wash	3.5 kg	0.55 kWh	53 l	1:12 h
Easy-Care 40 °C** (also suitable as a short programme)	-	3.5 kg	0.54 kWh	53 l	0:45 h
Delicates/Silk 30 °C	-	2 kg	0.20 kWh	39 l	0:40 h
Wool cold	-	2 kg	0.08 kWh	40 l	0:36 h
Wool 30 °C	-	2 kg	0.20 kWh	40 l	0:36 h

* Programme setting for testing and energy labelling in accordance with EU Directive 92/75/EEC.

** Programme setting for testing in accordance with applicable standard EN60456.

Note on comparative tests: When testing the test programmes, wash the specified load using the maximum spin speed.

As a **short programme** for coloureds, select the **Easy-Care 40 °C** programme, using maximum spin speed.

***The values deviate from the indicated values depending on water pressure, hardness, and inlet temperature, ambient temperature, type, amount and soiling of the laundry, detergent used, fluctuations in the power supply and selected additional functions.



Important information



Before washing for the first time

- Do not put any laundry in the machine. Turn the tap on. Pour into compartment **II**:
- approx. 1 litre water
 - detergent (dosage according to the manufacturer's instructions for light soiling and according to water hardness)
- Turn the programme selector to **Easy-Care 60 °C** and choose **Start**. At the end of the programme, turn the programme selector to **Off**.



Protecting the laundry and the machine

- When determining the dosage of all washing powders, additives and cleaning agents, you must follow the manufacturer's instructions.
- Empty pockets.
- Look out for metal items (paperclips, etc.).
- Wash delicates in a laundry bag (tights, curtains, underwired bras).
- Fasten zips, do up any buttons.
- Brush sand out of pockets and collars.
- Remove curtain fittings or place in the laundry bag.



Loading items of laundry

- Insert items of laundry of varying sizes. Take care not to trap items of laundry between the washing machine door and the rubber seal.



Laundry with varying degrees of soiling

- Wash new items of clothing separately.
- | | | |
|-------|--|--|
| light | | Do not prewash. Pretreat any stains as necessary. Select Intensive Wash additional function as necessary. |
| heavy | | Do not load as much laundry. Select the program with Prewash. Pretreat any stains as necessary. Select Intensive Wash additional function as necessary. |



Soaking

Load laundry of the same colour.

- Pour soaking agent/detergent into compartment **II** in accordance with the manufacturer's instructions. Turn the programme selector to **Cottons/Coloureds 30 °C** and select **Start**. After approx. 10 minutes, press **Start**, to pause the programme. Once the required soaking time has elapsed, press **Start**, again to continue the programme, or select a different programme.



Starching

Laundry must not be treated with fabric softener.

- Starching is possible in all wash programmes if liquid starch is used. Pour starch into the fabric softener compartment in accordance with the manufacturer's instructions (rinse first if necessary).



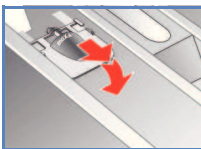
Dyeing/bleaching

- Dye should only be used in normal household quantities. Salt may damage stainless steel. Always follow the dye manufacturer's instructions. Do **not** use the washing machine for bleaching clothes.

! Insert for liquid detergent model-dependent



- Position the insert for dispensing liquid detergent:
- Remove the detergent drawer completely → *page 10*.
 - Slide the insert forwards.
- Do not use the insert (slide upwards):
- For gel detergents and washing powder
 - For programmes with **Prewash** or the Finish in option



Care



- **Risk of electric shock.** Disconnect the mains plug.
- **Risk of explosion.** No solvents.

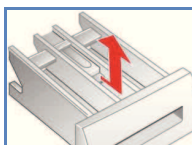
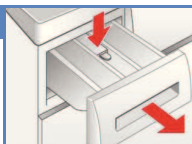
Machine housing, control panel

- Wipe with a soft, damp cloth.
- Remove detergent and cleaning agent residue immediately.
- Do not clean with a jet of water.

Cleaning the detergent drawer ...

... if it contains detergent or fabric softener residues.

1. Pull out, press insert down, remove drawer completely.
2. To remove the insert: press the insert upwards from below with your finger.
3. Clean the detergent dispenser tray and insert with water and a brush and dry it.
4. Fit the insert and engage (connect the cylinder to the guide pin).
5. Push in the detergent drawer.



i Leave the detergent drawer open so that any residual water can evaporate.

Drum

Leave the washing machine door open so that the drum can dry out. Rust stains - use chlorine-free cleaning agent, not steel wool.

Descaling Ensure there is no laundry in the machine

This should not be necessary if the correct detergent dosage has been used. If it is necessary, however, proceed according to the descaling agent manufacturer's instructions. Suitable descalers can be obtained via our website or from our after-sales service (→ *page 13*).

Information on the display panel depending on model

F: 16	Close the washing machine door properly; laundry may be caught.
F: 11, 29	Open the tap completely, supply hose kinked or trapped; Clean the filter → <i>page 11</i> , water pressure too low.
F: 18	Detergent solution pump blocked; Clean the detergent solution pump → <i>page 11</i> . Drainage hose/waste pipe blocked; Clean the drainage hose at the siphon → <i>page 11</i> .
F: 23	Water in the base tub, appliance leaking. Call the after-sales service.
F: 34, 61	Washing machine door cannot be locked. Open the washing machine door and close it with an audible "click"; switch the appliance off and on again; set the programme and make your settings; start the programme.
F: 42, 43, 44	Motor fault. Call the after-sales service.
Other displays	Switch off the appliance, wait for 5 seconds and switch it back on. If the display appears again, call the after-sales service → <i>page 13</i> .

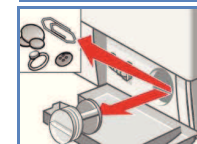
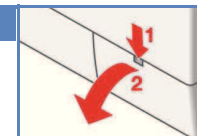
Information about blockages ! Risk of scalding

- Allow the detergent solution to cool down.
- Turn off the tap.

Detergent solution pump

Turn the programme selector to **Off** and disconnect the mains plug.

1. Open and remove the service flap.
2. Take the drainage hose out of the retainer. Remove the sealing cap, allow the detergent solution to flow out. Push the sealing cap back on.
3. Unscrew the pump cover carefully (residual water).
4. Clean the interior, pump cover thread and pump housing (the impeller in the detergent solution pump must be able to rotate).
5. Replace the pump cover and screw it on tightly. The handle points upright. Replace the drainage hose in the holder.
6. Refit the service flap and close it.

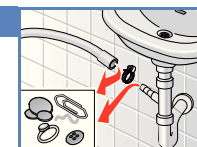


i To prevent unused detergent from flowing straight into the drain during the next wash: Pour 1 litre of water into compartment **II** and start the **Empty** programme.

Drainage hose at the siphon

Turn the programme selector to **Off** and disconnect the mains plug.

1. Loosen the hose clamp, remove the drainage hose carefully (residual water).
2. Clean the drainage hose and siphon connecting piece.
3. Reattach the drainage hose and secure the connection with the hose clamp.



Filter in the water supply

! Risk of electric shock
Do not immerse the AquaStop safety device in water (it contains an electric valve).

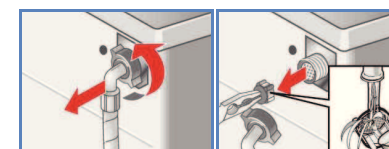
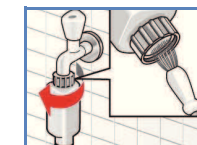
- Reduce the water pressure in the supply hose:
1. Turn off the tap.
 2. Select any programme (except for Spin/Empty).
 3. Select **Start**. Let the programme run for approximately 40 seconds.
 4. Turn the programme selector to **Off**. Disconnect the mains plug.

Clean the filter:

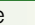
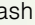
5. Disconnect the hose from the tap. Clean the filter with a small brush.

and/or for Standard and Aqua-Secure models:
Remove the hose from the rear of the appliance. Remove the filter with pliers and clean.

6. Connect the hose and check for leaks.



What to do if...

- Water is leaking out.
 - Attach/replace the drainage hose correctly.
 - Tighten the screw connection of the supply hose.
- No water supply. Detergent not dispensed.
 - **Start** not selected?
 - Tap not turned on?
 - Filter blocked? Clean the filter → *page 11*.
 - Supply hose kinked or trapped?
- Washing machine door cannot be opened.
 - Safety function active. Programme termination? → *page 4*.
 - ∅ (Rinse Stop = no final spin) selected? → *page 3,4*.
 - Can be opened by emergency release only? → *page 13*.
- Programme does not start.
 - **Start** or **Finish** in time selected?
 - Washing machine door closed?
- Detergent solution does not empty.
 - ∅ (Rinse Stop = no final spin) selected? → *page 3,4*.
 - Clean the detergent solution pump → *page 11*.
 - Clean the waste pipe and/or drainage hose.
- Water not visible in the drum.
 - Not a fault - water below the visible area.
- Spin result not satisfactory. Laundry wet/too damp.
 - No fault - the unbalanced-load detection system interrupted spinning, uneven laundry distribution. Distribute large and small items of laundry evenly in the drum.
 - **Less Ironing** selected? → *page 5*.
 - Speed selected too low? → *page 5*.
- The programme duration changes during the wash cycle.
 - Not a fault – the programme sequence is optimised for the particular wash process. This may result in changes to the programme duration in the display field.
- Drum spins gently several times.
 - Not a fault - unbalanced-load detection system is adjusting the imbalance.
- Residual water in the compartment  for care products.
 - Not a fault - the action of the care product is not affected.
 - Clean the insert if necessary → *page 10*.
- Odour formation in the washing machine.
 - Run programme **Cottons/Coloureds 90 °C** without laundry. Use standard detergent.
- Status display  (Wash) flashes. Detergent may be leaking out of the detergent drawer.
 - Too much detergent used? Mix 1 tablespoon of fabric softener with ½ litre of water and pour into compartment **II** (*not with outdoor or down fabrics*).
 - Reduce the detergent dosage for the next wash cycle.
- Loud spinning, vibrations and “wandering” during the spin cycle.
 - Are the appliance feet fixed? Secure appliance feet → *Installation instructions*.
 - Transportation safety devices removed? Remove transportation safety devices → *Installation instructions*.
- Noises during spin and drain cycles.
 - Clean detergent-solution pump → *page 10*
- Display panel/indicator lamps do not function during operation.
 - Power cut?
 - Circuit breakers tripped or fuses blown? Reset the circuit breakers or change the fuses.
 - If the fault occurs repeatedly, call the after-sales service.
- Programme Status longer than usual.
 - Not a fault - unbalanced-load detection system is adjusting the imbalance by repeatedly redistributing the laundry.
 - Not a fault - foam detection system active - adds an additional rinse cycle.

What to do if ...

- There are detergent residues on the laundry.
 - Occasionally, phosphate-free detergents contain water-insoluble residues.
 - Select **Rapid 15'** or brush out the laundry after washing.
 - – **P** – in the display panel.
 - **Start** selected.
 - To continue the programme, press **Start**.
 - In pause mode, **Start** flashes very quickly and a signal sounds.
 - Water level too high. Not possible to add more laundry. Close the washing machine door immediately if necessary.
 - To continue, press the Start button.
- If you cannot correct a fault yourself (switching on/off) or a repair is required:
- Turn the programme selector to **Off** and remove the mains plug from the socket.
 - Turn off the water supply and call the after-sales service → *Installation instructions*.

Emergency release e.g. in the event of a power cut



The programme continues when the power supply is restored. However, if the laundry has to be removed, the washing machine door can be opened as follows:



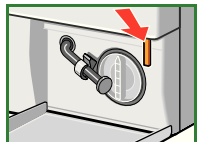
Risk of scalding

The detergent solution and laundry may be hot. If possible, leave to cool down.

Do not reach into the drum if it is still turning.

Do not open the washing machine door if you can see water through the glass.

1. Turn the programme selector to **Off** and disconnect the mains plug.
2. Drain the detergent solution → *page 10*.
3. Pull the emergency release downwards with a tool and release. Washing machine door can then be opened.



After-sales service

- If you cannot remedy the fault yourself (What to do if ..., → *page 12, 13*), contact our after-sales service. We will always find a suitable solution to avoid unnecessary visits by repair personnel.
- You will find the contact data for your closest after-sales service in the after-sales service directory (depending on model).
 - **GB** 0844 8928999 Calls from a BT landline will be charged at up to 3 pence per minute. A call set-up fee of up to 6 pence may apply.
 - **IE** 01450 2655
- Please give the after-sales service the product number (E no.) and the production number (FD) of the appliance.

E-Nr. _____ FD _____

Product number Production number

*This information can be found:
on the inside of the washing machine door*/
opened service flap* and rear of the appliance.
depending on model

- **Trust the manufacturer's competence.** Turn to us. You will thereby ensure that the repairs are performed by trained service personnel equipped with original repair parts.



Observe the safety instructions on page 8.



Washing machine

Instruction manual

en



Read these instructions and the separate installation instructions before operating the washing machine.

SIEMENS