

Your washing machine

Congratulations – You have opted for a modern, high-quality domestic appliance manufactured by BOSCH. The washing machine is distinguished by its economical use of water and energy. Each appliance which leaves our factory has been inspected thoroughly to ensure that it functions properly and is in perfect condition.

For further information about products, accessories, spare parts and services visit our web site: www.bosch-home.com or contact our after-sales service centres.

Environmentally friendly waste disposal

All packaging must be disposed of in accordance with environmental guidelines. This appliance is certified in accordance with European Directive 2002/96/EEC on waste electrical and electronic equipment (WEEE). This directive provides the framework for the EU-wide collection and reuse of used appliances.

Observe the safety instructions on page 8.

Read these instructions before switching on the washing machine. Also follow the separate installation instructions.

Contents

Intended use	1
Programmes	1
Preparation	2/3
Setting and adjusting programmes	3
Washing	3/4
Removing the laundry	4
Display information, Options, Functions	5/6
Programme overview	7
Safety instructions	8
Consumption values	9
Important information	9
Care	10
Information on the display panel	10
Maintenance	11
What to do if	12
Emergency release	13
Customer service	13

Protection of the environment/Conservation tips

- Always fill the washing machine with a maximum amount of laundry for the relevant programme.
- Wash normally soiled laundry without prewash.
- Select **Cottons** 60 °C programme can reach good cleaning result with significantly lower energy consumption.
- Dose the detergent according to the manufacturer's instructions and water hardness.
- If the laundry is to be subsequently dried in a tumble dryer, select a spin speed as specified by the dryer manufacturer.

Intended use

- For domestic use only.
- For washing machine-washable fabrics in a detergent solution.
- To be operated with cold mains water and commercially available low foam detergents and care products which are suitable for use in washing machines.

Do not leave children unattended near the washing machine!

The washing machine is not to be used by children or persons not familiar with the operating instructions.

Keep pets away from the washing machine!

Preparation

Correct installation according to separate installation instructions.

Check the machine

- Never switch on a damaged machine!
- Inform your customer service!

Insert mains plug

With dry hands only! Only hold the plug itself!

Turn on the tap

Before washing for the first time, wash once without any laundry →page 9

Sorting and loading the laundry

Observe the care information provided by the manufacturer. Sort according to the information on the care labels. Sort according to type, colour, soiling and temperature. Remove any foreign objects - risk of rusting. Do not exceed the maximum load. →page 7

Observe the instructions in the Important information section. →page 9 Load both large and small items of laundry. Close the washing machine door. Take care not to trap any items of clothing between the loading door and rubber seal.

Add detergent and care product

Add the appropriate dose according to: Amount of laundry, soiling, water hardness (ask your water supply company) and manufacturer's instructions. Models without insert for liquid detergent: pour liquid detergent into an appropriate dispenser and place in the drum. During operation: close the detergent drawer!

Compartment II: Detergent for the main wash, water softener, bleach, stain remover

Compartment ☼: Fabric softener, impregnating agent, starch

Compartment I: Detergent for pre-wash

Setting and adjusting programmes

If the symbol lights up or flashes in the display panel, the childproof lock is active. →deactivate, page 6

For additional functions and option buttons, see the Individual settings section. →page 5/6

Select Start/Reload

All buttons are sensitive and a gentle tap is adequate! If you press and hold the Option buttons, the setting options automatically scroll through.

Programme selector for switching the machine on and off and for selecting the programme. Can be rotated in either direction.

Washing

Detergent drawer with compartments I, II, ☼

Drum

Control panel

Door handle

Service flap

Washing

Removing laundry

- Open washing machine door and remove laundry. If (Rinse stop = no final drain/spin) is active: Select the spin speed or set programme selector to **Empty** or **Spin**.
- Select **Start/Reload**.
- Remove any foreign objects - risk of rusting.

Turn off the tap

Switch off

- Set Programme selector to **Off**.

Programme ended when ...

... **Start/Reload** goes out and - or - - - (if is selected, no final drain/spin) is indicated on the display panel, the buzzer sounds. Set volume of buzzer. →page 6

Change the programme ...

- If you have selected the wrong programme by mistake:
 - Reselect the programme.
 - Select **Start/Reload**.

Pause the programme ...

- Touch the **Start/Reload** button.
- Follow the instructions in the display field: when lights up and appears in the display, the door can be opened. If required, add /remove a laundry item; If and are displayed alternately, the door cannot be opened due to a high water level in drum or a high temperature.
- Touch **Start/Reload** button to continue the programme.

... or terminate the programme

- Programmes with high temperature:
- Cool down laundry: Select **Rinse**.
 - Select **Start/Reload**.
- Programmes at lower temperature:
- Select **Empty** or **Spin**.
 - Select **Start/Reload**.

Display information, Options, Functions

Display symbols

°C	30 40 50 60 90	Pre wash
⏰	00:00 kg	Rinse Plus
⌂	400 600 800 900 1000	Easy-iron
↺		Night wash

- Washing:** On if wash process is running.
- Rinse:** On if rinse process is running.
- Spin:** On if spin process is active.
- Water tap:** Flashing if tap not open or no water supply.
- Door:** On if door can be opened.
- Overdosage:** On if too much detergent used.

Automatic load detection: Automatically detects the load size after water inlet phase and sets accurate remaining time. Symbols indicate small, middle and full loads measured* according to the recommended max. load of the selected programme. * Automatic display of the detected load only for washing programmes with a max. load recommendation > 3.0 kg except for Rinse, Spin and Drain. Different types of textiles with different water absorption rates may influence the load display.

Display information

°C	30 40 50 60 90	Pre wash
⏰	00:00 kg	Rinse Plus
⌂	400 600 800 900 1000	Easy-iron
↺		Night wash

- kg, e.g. 3.5 kg*: max. recommended load for selected programme →page 7, **Programme overview**
- time, e.g. 2:45*: remaining time
- ⏸ : pause
- ⏸ : door can be opened in "Pause" status
- - - : end of programme
- - - : end of programme with the setting
- ⏸ : set volume of signals →page 6
- ⏸ : Information on the display →page 10

*Display shown may vary depending on the model and selected programme.

Option buttons

You can change the spin speed and temperature beforehand and while the selected programme is running. The effects depending on the progress of the programme.

°C (Temp.)

You can change the indicated washing temperature. The maximum washing temperature which can be selected depends on the programme that has been chosen.

(Finish in)

When you select a programme, the respective programme duration is displayed. You can delay the start of the programme before it begins. The finish-in time indicates when the programme will be finished. It can be set in hour increments up to a maximum of 24h. Press and hold the **(Finish in)** button until the required number of hours is shown (h=hour). Select **Start/Reload**.

Options, Functions

(Spin speed)

You can change the indicated spin speed. The maximum spin speed which can be selected depends on the chosen programme. If is selected, the load is held in the rinsing water.

(Childproof lock)

Programme cannot be changed by accidental operation. To activate the childproof lock:

- After the programme starts, press and hold the button for 5 seconds;
- Release when the symbol lights up.

When the programme ends, the **Start/Reload** indicator remains on to remind you to deactivate the childproof lock. * symbol flashes if the programme has been changed while childproof lock is activated.

To deactivate the childproof lock:

- Touch the button until the symbol turns off;
- Release the button.

If the childproof lock is deactivated while the programme selector is in a different position from when the childproof lock was activated*, the running programme will be halted.

Additional functions

see also Programme overview →page 7

Prewash

For heavily soiled, hard-wearing textiles. Pre-wash at max. 30 °C.

Rinse Plus

Additional rinse cycles, extended washing time. For areas with very soft water or for further improvement of the rinsing result.

Easy-iron

Special spin sequence with subsequent fluffing. Gentle final spin - residual moisture in the laundry increased slightly.

Night wash

For cotton, synthetic fibres or blended fabrics. Programme with lower noise. Buzzer volume will be off.

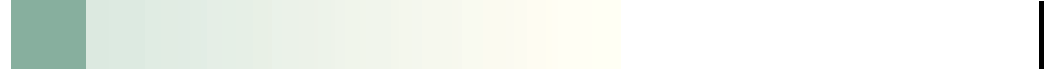
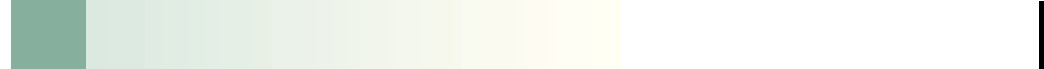
The additional function indicator light is on when the option is selected; if the option is not selectable for the programme, this is indicated by a short flashing of the light and an acoustic signal.

Start/Reload

For starting or pausing the programme.

Signals

1. Start signal mode



*If required, set repeatedly

Programme overview (see also the information on page 5, 6)

Programmes	max. (kg)	°C	Type of laundry	Additional functions; information
PowerWash 60'	5.0	60	Heat-resistant textiles made of cotton or linen	Night wash Time-controlled programme, 60 minutes. Short programme for normally soiled laundry.
Cottons quick	8.0	90	Hard-wearing textiles; heat-resistant textiles made of cotton or linen	Prewash , Rinse Plus , Easy-iron , Night wash
Sensitive	3.5	60	Hard-wearing textiles made of cotton or linen	Prewash , Rinse Plus , Easy-iron , Night wash
Mix	2.0	40	Textiles made of cotton and easy-care textiles; Easy care textiles; Textiles for kids; care for the skin of kids	Night wash Particularly gentle wash programme to avoid shrinkage, longer programme breaks (laundry rests in the detergent solution). Short programme approx. 15 minutes, suitable for lightly soiled laundry.
Easy-Care		60	For delicate, washable textiles, e.g. made of silk, satin, synthetic fibres or blended fabrics (e.g. curtains)	Prewash , Rinse Plus , Easy-iron , Night wash
Kids wear		60	Hand or machine-washable wool or rich-wool textiles	Night wash Particularly gentle wash programme to avoid shrinkage, longer programme breaks (laundry rests in the detergent solution). Short programme approx. 15 minutes, suitable for lightly soiled laundry.
Delicate/Silk		40	Easy-Care textiles made of cotton, linen, synthetic fibres or blended fabrics	Prewash , Rinse Plus , Easy-iron , Night wash
Wool		40	Easy-Care textiles made of cotton, linen, synthetic fibres or blended fabrics	Night wash Particularly gentle wash programme to avoid shrinkage, longer programme breaks (laundry rests in the detergent solution). Short spin only, drip dry.
Super Quick 15'		60	For shirts and skirts which can only be aired	Prewash , Rinse Plus , Easy-iron , Night wash
Shirts/Blouses		60	Drum clean programme: 90° - antibacterial programme, pour no detergent, 40° - antibacterial programme for use with special washing machine cleaning detergent, * cold = save energy	Prewash , Rinse Plus , Easy-iron , Night wash
Drum Clean		40, 90	Washable textiles	Prewash , Rinse Plus , Easy-iron , Night wash
Rinse		60		Easy-iron , Easy-iron , Night wash
Spin		8.0		Easy-iron , Easy-iron , Night wash
Empty				Easy-iron , Easy-iron , Night wash

1 The programmes are time-controlled for lightly soiled textiles. If textiles are heavily soiled, reduce the load and select additional function, e.g. **Prewash**.
Programmes without Prewash - no detergent into compartment II, programmes with Prewash - divide detergent between compartments I and II.
* Max. load according to IEC 60466 Ed4.

For further information and a selection of our products go to our web site: <http://www.bosch-home.com> or contact our customer service centres

Robert Bosch Hausgeräte GmbH
Carl-Wery-Str. 34
D-81739 Munich/Germany
WAS2046GSG
9000529987
0411

Safety instructions

- Read and follow the operating and installation instructions and all other information enclosed with the washing machine.
- Retain documents for subsequent use.
- Risk of electric shock**
 - Never pull out the mains plug by tugging the power cord.
 - Never insert/pull out the mains plug with damp hands.
- Risk of death**

For worn-out appliances:

 - Pull out the mains plug.
 - Sever the power cord and discard together with the plug.
 - Destroy the lock on the washing machine door. This will prevent children from locking themselves and risking their lives.
- Risk of suffocation**
 - Keep packaging, plastic film and packaging parts out of the reach of children.
- Risk of poisoning**
 - Keep detergents and care products out of the reach of children.
- Risk of explosion**
 - Items of laundry pretreated with cleaning agents containing solvents, e.g. stain remover/cleaning solvents may lead to an explosion after being loaded into the washing machine. Rinse items of laundry thoroughly by hand beforehand.
- Risk of injury**
 - Washing machine door may become very hot.
 - Take care when draining hot detergent solution.
 - Do not climb onto the washing machine.
 - Do not lean on the open washing machine door.
 - Do not touch the drum in case it is still spinning.
 - Be careful when opening the detergent drawer while the machine is in operation.

Consumption values

Programme	Load	Electricity consumption**	Water**	Programme duration**
Cottons 30 °C	8.0 kg	0.41 kWh	63 l	2:27 h
Cottons 40 °C	8.0 kg	0.80 kWh	63 l	2:27 h
Cottons 60 °C*	8.0 kg	1.34 kWh	63 l	2:32 h
Cottons 90 °C	8.0 kg	2.41 kWh	71 l	2:36 h
Easy-Care 40 °C	3.5 kg	0.52 kWh	55 l	1:00 h
Mix 40 °C	3.5 kg	0.61 kWh	52 l	1:03 h
Delicate/Silk 30 °C	2.0 kg	0.16 kWh	30 l	0:39 h
Wool (cold)	2.0 kg	0.08 kWh	41 l	0:36 h
Wool 30 °C	2.0 kg	0.14 kWh	39 l	0:36 h

* Programme setting for testing and energy labelling in accordance with IEC60456.
 ** The values deviate from the indicated values depending on water pressure, hardness, and inlet temperature, ambient temperature, type, amount and soiling of the laundry, detergent used, fluctuations in the power supply and selected additional functions.

Important information

- Preparing/Protecting the laundry and the machine**
 - Empty pockets.
 - Look out for metal items (paperclips, etc.).
 - Wash delicates in a net/bag (lights, curtains, underwired bras).
 - Fasten zips, do up any buttons.
 - Brush sand out of pockets and collars.
 - Remove curtain fittings or in a laundry bag.
- Before washing for the first time**

Do not load any laundry into the machine. Turn on the tap. Add the following to compartment II:

 - approx. 1 litre water
 - detergent (dosage according to the manufacturer's instructions for light soiling and the appropriate degree of water hardness)

Set the programme selector to **Drum Clean 40 °C** and select **Start/Reload**. At the end of the programme, turn the programme selector to **Off**.
- Laundry with different degrees of soiling**
 - Light: Wash new items separately. Do not prewash.
 - Heavy: Load less laundry. Prewash. If required, pretreat stains. Select **Cottons 90 °C** programme.
- Soaking**

Load laundry of the same colour.

Pour soaking agent/detergent into compartment II according to the manufacturer's instructions. Set **Cottons 30 °C** programme and select **Start/Reload**. After approx. 10 minutes, select **Start/Reload**. After the required soaking time, reselect **Start/Reload** if the programme is to be continued or change the programme.
- Starching**

Laundry must not be treated with fabric softener.

Starching is possible in all washing programmes if liquid starch is used. Add starch to the fabric softener compartment in accordance with the manufacturer's instructions.
- Dyeing/bleaching**

Dye in small quantities only. Salt can corrode stainless steel. Observe the dye manufacturer's instructions. Do **not** bleach laundry in the washing machine.

Care

- Risk of electric shock! Pull out the mains plug!
- Risk of explosion! No solvents!

Maintenance

- Risk of scalding! Allow detergent solution to cool down!
- Turn off the tap!

What to do if ...

- Water is leaking out.
 - Fit/refit drainage hose correctly.
 - Tighten the screw connection of the supply hose.
- No water supply. Detergent not dispensed.
 - **Start/Reload** not selected?
 - Water tap not turned on?
 - Supply hose filter blocked? Clean the filter. →page 11
 - Supply hose kinked or trapped?
- Washing machine door cannot be opened.
 - Safety function active. Programme stopped? →page 4
 - (Rinse stop = no final drain/spin) selected? →page 6
 - Can be opened by emergency release only. →page 13
- Programme does not start.
 - **Start/Reload** or **Finish-in time** selected?
 - Washing machine door closed?
- Detergent solution is not drained.
 - Clean the drain pump. →page 11
 - Clean waste pipe and/or drainage hose.
- Water not visible in the drum.
 - Not a fault - water below the visible area.
- Spin result not satisfactory.
 - Wash small and large items of laundry together.
 - **Easy-iron** selected? →page 6
 - Speed selected too low? →page 6
- Spin cycle performed several times.
 - Not a fault - unbalanced load detection system adjusts the imbalance.
- Compartment not rinsed out completely.
 - Remove the insert. Clean detergent drawer and insert. →page 10
- Odour formation in the washing machine.
 - Run the **Drum Clean 90 °C** programme without laundry.
 - Use standard detergent.
- Foam escapes from the detergent drawer.
 - Too much detergent used?
 - Mix 1 tablespoon of fabric softener with ½ litre of water and pour into compartment II in the detergent drawer.
 - Reduce detergent dosage for the next wash cycle.
- Excessive noise, vibrations and "wandering" during spin cycle.
 - Are the appliance feet fixed? Secure the appliance feet. →Installation instructions, page 5
 - Transport bolts removed? Remove transport bolts. Installation instructions, page 3
- Display panel/indicator lamps do not light up while the appliance is running.
 - Power failure/off? Interrupted programme will be resumed when power returns.
 - Circuit breaker tripped? Reset the circuit breaker/change the fuse.
 - If the fault occurs repeatedly, call the customer service.
- Programme sequence longer than usual.
 - Not a fault - unbalanced load detection system adjusts imbalance by repeatedly distributing the laundry.
 - Not a fault - foam detection system active - adds an additional rinse cycle.
- Detergent residues on the laundry.
 - Occasionally, phosphate-free detergents contain water-insoluble residues.
 - Select **Rinse** or brush the laundry after washing.
- If you cannot correct a fault yourself or a repair is required:
 - Turn the programme selector to **Off** and pull the mains plug out of the socket.
 - Turn off the tap and call the customer services. →page 13

Care

- Machine housing, control panel**
 - Wipe with a soft, damp cloth.
 - Do not use any abrasive cloths, scourers or cleaning agents (stainless steel cleaners).
 - Immediately remove laundry and cleaning agent residues.
 - Do not clean the appliance with a water jet.
- Clean the detergent drawer ...**

... if it contains detergent or fabric softener residues.

 1. Pull out the drawer up to the stop position, press down the latch on the insert and remove the drawer completely.
 2. Remove insert: pull insert upwards with finger.
 3. Clean the detergent dispenser and the insert with water and a brush.
 4. Refit the insert and secure in place (the cylinder should fit over the guide pin).
 5. Insert the detergent drawer.
 6. Leave the detergent drawer open so that residual water can evaporate.
- Drum**

Leave the washing machine door open after washing so that the drum can dry. Rust stains – use chlorine-free cleaning agent, not steel wool.
- Descaling**

No laundry in the machine!

This is not necessary if the detergent is dosed correctly. However, if it is necessary, follow the instructions of the descaler manufacturer. Suitable descaling products can be purchased from our website or customer service. →page 13

Information on the display

P:01	Please close the door immediately because of rising water level. In pause status, P:01 and P:02 are displayed alternately.
P:02	Door is locked due to safety reasons (water level and/or temperature are too high); in pause status, P:02 and P:03 are displayed alternately. If you need to open the door, wait for the temperature to drop or drain the water (e.g. select Empty programme).
P:03	Door cannot be locked/unlocked due to high temperature of the door lock. Wait a moment and try again.
Flashing	Flashing (no water supply): Tap turned on? Inlet filter blocked? Clean filter. →page 11 Supply hose kinked or blocked?
E:18	Clean drain pump; →page 11 outlet pipe/drainage hose blocked.
other displays	Switch off the appliance, wait 5 seconds and switch it back on. If the display appears again, call the customer service →page 13

Maintenance

- Drain pump**
 - Set the programme selector to **Off**, disconnect the mains plug.
 1. Open and remove the service flap.
 2. Release the drainage hose from the clip. Remove the sealing plug from the drainage hose, allow the detergent solution to flow out. Push the sealing cap back in.
 3. Remove the pump cap. Remove foreign objects/loose debris/fluff from inside and clean the pump. (impeller in the pump must be able to rotate).
 4. Clean any residual lye or fluff from the thread of the pump cap and pump housing.
 5. Attach the pump cap and screw it on tight until the stop, handle is upright. Place the drainage hose back in the retainer.
 6. Place the service flap back on and close.
- Filter in the water inlet hose**
 - Reduce the water pressure in the supply hose:
 1. Turn off the tap.
 2. Select any programme (except **Spin** or **Empty**).
 3. Touch **Start/Reload** button and allow the programme to run for approx. 40 seconds.
 4. Set the programme selector to **Off**. Disconnect the mains plug.
 - Clean the filter:**
 1. Remove the supply hose from the tap. Clean the filter with a small brush.

or

 2. Remove the supply hose from the rear of the appliance. Remove the filter with pliers and clean.
 - 2. Reconnect the supply hose and check if it is tight.

Customer service

- If you cannot rectify the fault yourself →page 12: What to do if ..., please contact our customer service. We will always find a suitable solution and will avoid a visit from a service technician wherever possible.
- The contact details for all countries can be found in the enclosed customer service directory.
- Please give the customer service the product number (E-Nr.) and the production number (FD) of the appliance.

E-Nr. _____
FD _____

Product number Production number

You will find the identification plate containing this information on the frame of the open door, and of the rating plate on the back of the appliance.

Rely on the professionalism of the manufacturer. Please contact us. This will ensure that the repair is carried out by trained service technicians who arrive equipped with genuine spare parts for your appliance.

Emergency release

- Interrupted programme will be resumed when power returns. However, if the laundry has to be removed, the washing machine door can be opened as follows:
 - **Risk of scalding!** The detergent solution and laundry may be hot. If possible, leave it to cool down. Do not reach into the drum if it is still rotating. Do not open the washing machine door if water can be seen through the glass.
 - Set the programme selector to **Off** and disconnect the mains plug.
 - Drain the detergent solution. →page 11
 - Pull the emergency release with a tool and release. The washing machine door can then be opened.

Customer service

- If you cannot rectify the fault yourself →page 12: What to do if ..., please contact our customer service. We will always find a suitable solution and will avoid a visit from a service technician wherever possible.
- The contact details for all countries can be found in the enclosed customer service directory.
- Please give the customer service the product number (E-Nr.) and the production number (FD) of the appliance.

E-Nr. _____
FD _____

Product number Production number

You will find the identification plate containing this information on the frame of the open door, and of the rating plate on the back of the appliance.

Rely on the professionalism of the manufacturer. Please contact us. This will ensure that the repair is carried out by trained service technicians who arrive equipped with genuine spare parts for your appliance.

Customer service

Customer service

- If you cannot rectify the fault yourself →page 12: What to do if ..., please contact our customer service. We will always find a suitable solution and will avoid a visit from a service technician wherever possible.
- The contact details for all countries can be found in the enclosed customer service directory.
- Please give the customer service the product number (E-Nr.) and the production number (FD) of the appliance.

E-Nr. _____
FD _____

Product number Production number

You will find the identification plate containing this information on the frame of the open door, and of the rating plate on the back of the appliance.

Rely on the professionalism of the manufacturer. Please contact us. This will ensure that the repair is carried out by trained service technicians who arrive equipped with genuine spare parts for your appliance.

Customer service

- If you cannot rectify the fault yourself →page 12: What to do if ..., please contact our customer service. We will always find a suitable solution and will avoid a visit from a service technician wherever possible.
- The contact details for all countries can be found in the enclosed customer service directory.
- Please give the customer service the product number (E-Nr.) and the production number (FD) of the appliance.

E-Nr. _____
FD _____

Product number Production number

You will find the identification plate containing this information on the frame of the open door, and of the rating plate on the back of the appliance.

Rely on the professionalism of the manufacturer. Please contact us. This will ensure that the repair is carried out by trained service technicians who arrive equipped with genuine spare parts for your appliance.



Your washing machine

Congratulations – You have opted for a modern, high-quality domestic appliance manufactured by BOSCH. The washing machine is distinguished by its economical use of water and energy. Each appliance which leaves our factory has been inspected thoroughly to ensure that it functions properly and is in perfect condition.

For further information about products, accessories, spare parts and services visit our web site: www.bosch-home.com or contact our after-sales service centres.

Environmentally friendly waste disposal

All packaging must be disposed of in accordance with environmental guidelines. This appliance is certified in accordance with European Directive 2002/96/EEC on waste electrical and electronic equipment (WEEE). This directive provides the framework for the EU-wide collection and reuse of used appliances.



Observe the safety instructions on page 8.



Read these instructions before switching on the washing machine. Also follow the separate installation instructions.

Contents

	Page
Intended use	1
Programmes	1
Preparation	2/3
Setting and adjusting programmes	3
Washing	3/4
Removing the laundry	4
Display information, Options, Functions	5/6
Programme overview	7
Safety instructions	8
Consumption values	8
Important information	9
Care	10
Information on the display panel	10
Maintenance	11
What to do if	12
Emergency release	13
Customer service	13



Protection of the environment/Conservation tips

- Always fill the washing machine with a maximum amount of laundry for the relevant programme.
- Wash normally soiled laundry without prewash.
- Select **Cottons** 60 °C programme can reach good cleaning result with significantly lower energy consumption.
- Dose the detergent according to the manufacturer's instructions and water hardness.
- If the laundry is to be subsequently dried in a tumble dryer, select a spin speed as specified by the dryer manufacturer.

Intended use

- For domestic use only.
- For washing machine-washable fabrics in a detergent solution.
- To be operated with cold mains water and commercially available low foam detergents and care products which are suitable for use in washing machines.



- Do not leave children unattended near the washing machine!
- The washing machine is not to be used by children or persons not familiar with the operating instructions.
- Keep pets away from the washing machine!

Programmes

Detailed programme overview. →page 7
The temperature and spin speed can be selected individually, irrespective of the selected programme and programme progress.

PowerWash 60'	} Hard-wearing textile
Cottons	
Cottons quick	
Mix	different types of laundry: cotton, easy care textiles
Easy-Care	easy care textiles
Delicate/Silk	silk and delicate washable textiles
Wool	hand-/machine-washable wool
Super Quick 15'	15 minutes short programme, slightly soiled textiles
Shirts/Blouses	shirt which can be ironed, loose upper clothes
Sensitive	hard-wearing textiles
Kids wear	textiles for kids
Drum Clean	programme to clean the drum without laundry. Use the programme once every three months
Rinse	single rinse with spin
Spin	single spin with selectable spin speed
Empty	single pump, after selecting

Preparation



Correct installation according to separate installation instructions.



Check the machine

- Never switch on a damaged machine!
- Inform your customer service!



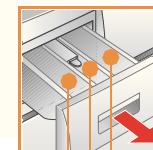
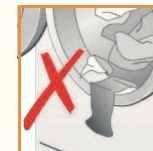
Insert mains plug



With dry hands only!
Only hold the plug itself!



Turn on the tap



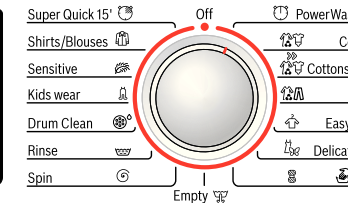
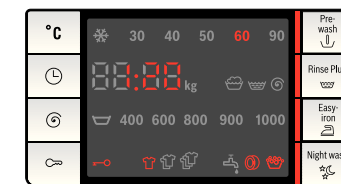
Compartment II: Detergent for the main wash, water softener, bleach, stain remover

Compartment ☼: Fabric softener, impregnating agent, starch

Compartment I: Detergent for pre-wash

**Display panel/
Option buttons/
Additional functions**

Programme selector



Programme selector for switching the machine on and off and for selecting the programme. Can be rotated in either direction.



Before washing for the first time,
wash once without any laundry →page 9

Sorting and loading the laundry

Observe the care information provided by the manufacturer.
Sort according to the information on the care labels.
Sort according to type, colour, soiling and temperature.
Remove any foreign objects - risk of rusting.
Do not exceed the maximum load. →page 7

Observe the instructions in the Important information section. →page 9
Load both large and small items of laundry.
Close the washing machine door. Take care not to trap any items of clothing between the loading door and rubber seal.

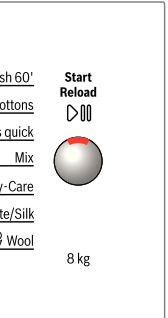
Add detergent and care product

Add the appropriate dose according to:
Amount of laundry, soiling, water hardness (ask your water supply company) and manufacturer's instructions.
Models without insert for liquid detergent: pour liquid detergent into an appropriate dispenser and place in the drum.
During operation: close the detergent drawer!

i Dilute viscous fabric softener and fabric conditioner with water. This prevents blockages.

Setting and adjusting programmes

Start/Reload



i If the symbol lights up or flashes in the display panel, the childproof lock is active. →deactivate, page 6

For additional functions and option buttons, see the Individual settings section. →page 5/6

Select Start/Reload

i All buttons are sensitive and a gentle tap is adequate!
If you press and hold the Option buttons, the setting options automatically scroll through.



1

2

Washing

Detergent drawer with compartments I, II,

Drum

Control panel

Door handle



Service flap



3

Removing laundry

- Open washing machine door and remove laundry.
If (Rinse stop = no final drain/spin) is active: Select the spin speed or set programme selector to **Empty** or **Spin** .
- Select **Start/Reload** .
- Remove any foreign objects - risk of rusting.

Turn off the tap

Switch off

- Set Programme selector to **Off**.

Programme ended when ...

... **Start/Reload** goes out and - - or - - - - (if was selected, no final drain/spin) is indicated on the display panel, the buzzer sounds. Set volume of buzzer. →page 6

Change the programme ...

- If you have selected the wrong programme by mistake:
- Reselect the programme.
 - Select **Start/Reload** .

Pause the programme ...

- Touch the **Start/Reload** button.
- Follow the instructions in the display field: when lights up and appears in the display, the door can be opened. If required, add /remove a laundry item; If and are displayed alternately, the door cannot be opened due to a high water level in drum or a high temperature.
- Touch **Start/Reload** button to continue the programme.

... or terminate the programme

- Programmes with high temperature:
- Cool down laundry: Select **Rinse** .
 - Select **Start/Reload** .
- Programmes at lower temperature:
- Select **Empty** or **Spin** .
 - Select **Start/Reload** .

Washing

Display information, Options, Functions

Display symbols



	Washing: On if wash process is running.
	Rinse: On if rinse process is running.
	Spin: On if spin process is active.
	Water tap: Flashing if tap not open or no water supply.
	Door: On if door can be opened.
	Overdosage: On if too much detergent used.
	Automatic load detection: Automatically detects the load size after water inlet phase and sets accurate remaining time. Symbols indicate small, middle and full loads measured* according to the recommended max. load of the selected programme. * Automatic display of the detected load only for washing programmes with a max. load recommendation > 3.0 kg except for Rinse, Spin and Drain. Different types of textiles with different water absorption rates may influence the load display.

Display information



kg , e.g. 3.0 kg*	max. recommended load for selected programme →page 7, Programme overview
time , e.g. 1:30*	remaining time 24h*: finish-in time defined by user →page 5
PAUS	pause
OPEN	door can be opened in "Pause" status
- - -	end of programme
- - - -	end of programme with the setting
	set volume of signals →page 6
	Information on the display →page 10

Before starting a programme, the max. load for the selected programme is displayed when the door is open. The remaining time or finish-in time is displayed when the door is closed.

*Display shown may vary depending on the model and selected programme.

Option buttons

You can change the spin speed and temperature beforehand and while the selected programme is running. The effects depending on the progress of the programme.

°C (Temp.)

You can change the indicated washing temperature. The maximum washing temperature which can be selected depends on the programme that has been chosen.

⌚ (Finish in)

When you select a programme, the respective programme duration is displayed. You can delay the start of the programme before it begins. The finish-in time indicates when the programme will be finished. It can be set in hour increments up to a maximum of 24h. Press and hold the **(Finish in)** button until the required number of hours is shown (h=hour). Select **Start/Reload**

Options, Functions

⌚ (Spin speed)

You can change the indicated spin speed. The maximum spin speed which can be selected depends on the chosen programme. If is selected, the load is held in the rinsing water.

🔒 (Childproof lock)

Programme cannot be changed by accidental operation.

To activate the childproof lock:

- After the programme starts, press and hold the button for 5 seconds;
- Release when the symbol lights up.

When the programme ends, the **Start/Reload** indicator remains on to remind you to deactivate the childproof lock.

* symbol flashes if the programme has been changed while childproof lock is activated.

To deactivate the childproof lock:

- Touch the button until the symbol turns off;
- Release the button.

If the childproof lock is deactivated while the programme selector is in a different position from when the childproof lock was activated*, the running programme will be halted.

Additional functions

see also Programme overview →page 7

Prewash

For heavily soiled, hard-wearing textiles. Pre-wash at max. 30 °C.

Rinse Plus

Additional rinse cycles, extended washing time. For areas with very soft water or for further improvement of the rinsing result.

Easy-iron

Special spin sequence with subsequent fluffing. Gentle final spin - residual moisture in the laundry increased slightly.

Night wash

For cotton, synthetic fibres or blended fabrics. Programme with lower noise. Buzzer volume will be off.

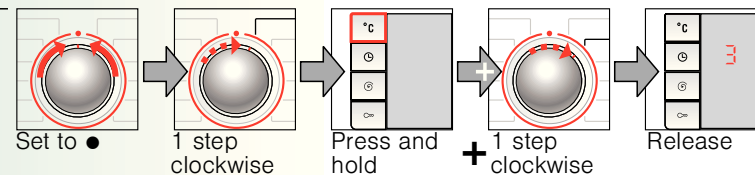
The additional function indicator light is on when the option is selected; if the option is not selectable for the programme, this is indicated by a short flashing of the light and an acoustic signal.

Start/Reload

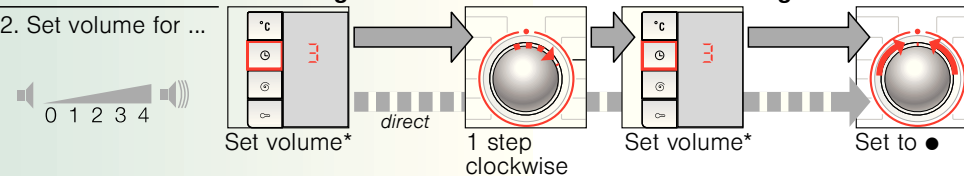
For starting or pausing the programme.

Signals

1. Start signal mode



2. Set volume for ...



*If required, set repeatedly

Programme overview

(see also the information on page 5, 6)

Additional functions; information



Type of laundry

max.(kg) *

°C

Programmes	°C	max.(kg) *	Type of laundry	Additional functions; information
PowerWash 60'	❄ - 60	5.0	Heat-resistant textiles made of cotton or linen	Night wash Time-controlled programme, 60 minutes. Short programme for normally soiled laundry.
Cottons	❄ - 90		Hard-wearing textiles made of cotton or linen	Prewash , Easy-iron , Night wash
Cottons quick	❄ - 40	8.0	Hard-wearing textiles, heat-resistant textiles made of cotton or linen	Prewash , Easy-iron , Night wash
Sensitive	❄ - 60		Hard-wearing textiles made of cotton or linen	Prewash , Easy-iron , Night wash For particularly sensitive skin, longer wash cycle at selected temperature, higher water level, additional rinse cycle.
Mix	❄ - 40	3.5	Textiles made of cotton and easy-care textiles.	Prewash , Easy-iron , Night wash Different types of textiles which can be washed together.
Easy-Care Kids wear	❄ - 60		Easy care textiles Textiles for kids, care for the skin of kids	Prewash , Easy-iron , Night wash
Delicate/Silk			For delicate, washable textiles, e.g. made of silk, satin, synthetic fibres or blended fabrics (e.g. curtains)	Prewash , Easy-iron , Night wash Short spin only between the rinse cycles.
Wool	❄ - 40	2.0	Hand or machine-washable wool or rich-wool textiles	Night wash Particularly gentle wash programme to avoid shrinkage, longer programme-breaks (laundry rests in the detergent solution).
Super Quick 15'			Easy-Care textiles made of cotton, linen, synthetic fibres or blended fabrics	Night wash Short programme approx. 15 minutes, suitable for lightly soiled laundry.
Shirts/Blouses	❄ - 60		For shirts and skirts which can only be aired	Prewash , Easy-iron , Night wash Short spin only, drip dry.
Drum Clean	❄, 40, 90	0	Drum clean programme, 90° =antibacterial programme, pour no detergent, 40° =antibacterial programme, pour no detergent, 40° =antibacterial programme for use with special washing machine cleaning detergent. ❄ cold = save energy	
Rinse			Washable textiles	Easy-iron , Night wash
Spin		8.0	Washable textiles	Easy-iron , Night wash
Empty				Night wash

i The programmes are time-controlled for lightly soiled textiles. If textiles are heavily soiled, reduce the load and select additional function, e.g. **Prewash**.

Programmes without prewash - pour detergent into compartment **II**; programmes with prewash - divide detergent between compartments **I** and **II**.

* Max. load according to IEC 60456 Ed.4.

For further information and a selection of our products go to our web site: <http://www.bosch-home.com> or contact our customer service centres

Robert Bosch Hausgeräte GmbH
Carl-Wery-Str.34
D-81739 Munich/Germany

WAS20460SG

9000529987
0411



Safety instructions

– Read and follow the operating and installation instructions and all other information enclosed with the washing machine.

– Retain documents for subsequent use.

Risk of electric shock – Never pull out the mains plug by tugging the power cord.
– Never insert/pull out the mains plug with damp hands.

Risk of death For worn-out appliances:
– Pull out the mains plug.
– Sever the power cord and discard together with the plug.
– Destroy the lock on the washing machine door.
This will prevent children from locking themselves and risking their lives.

Risk of suffocation – Keep packaging, plastic film and packaging parts out of the reach of children.

Risk of poisoning – Keep detergents and care products out of the reach of children.

Risk of explosion – Items of laundry pretreated with cleaning agents containing solvents, e.g. stain remover/cleaning solvents may lead to an explosion after being loaded into the washing machine.
Rinse items of laundry thoroughly by hand beforehand.

Risk of injury – Washing machine door may become very hot.
– Take care when draining hot detergent solution.
– Do not climb onto the washing machine.
– Do not lean on the open washing machine door.
– Do not touch the drum in case it is still spinning.
– Be careful when opening the detergent drawer while the machine is in operation.

Consumption values

Programme	Load	Electricity consumption**	Water**	Programme duration**
Cottons 30 °C	8.0 kg	0.41 kWh	63 l	2:27 h
Cottons 40 °C	8.0 kg	0.80 kWh	63 l	2:27 h
Cottons 60 °C*	8.0 kg	1.34 kWh	63 l	2:32 h
Cottons 90 °C	8.0 kg	2.41 kWh	71 l	2:36 h
Easy-Care 40 °C	3.5 kg	0.52 kWh	55 l	1:00 h
Mix 40 °C	3.5 kg	0.61 kWh	52 l	1:03 h
Delicate/Silk 30 °C	2.0 kg	0.16 kWh	30 l	0:39 h
Wool (cold)	2.0 kg	0.08 kWh	41 l	0:36 h
Wool 30 °C	2.0 kg	0.14 kWh	39 l	0:36 h

* Programme setting for testing and energy labelling in accordance with IEC60456.

** The values deviate from the indicated values depending on water pressure, hardness, and inlet temperature, ambient temperature, type, amount and soiling of the laundry, detergent used, fluctuations in the power supply and selected additional functions.



Important information



Preparing/Protecting the laundry and the machine

- Empty pockets.
- Look out for metal items (paperclips, etc.).
- Wash delicates in a net/bag (tights, curtains, underwired bras).
- Fasten zips, do up any buttons.
- Brush sand out of pockets and collars.
- Remove curtain fittings or in a laundry bag.



Before washing for the first time

Do not load any laundry into the machine. Turn on the tap. Add the following to compartment II:

- approx. 1 litre water
- detergent (dosage according to the manufacturer's instructions for light soiling and the appropriate degree of water hardness)

Set the programme selector to **Drum Clean** **40 °C** and select **Start/Reload** . At the end of the programme, turn the programme selector to **Off**.



Laundry with different degrees of soiling

Light		Wash new items separately. Do not prewash.
Heavy		If required, pretreat stains. Select Cottons 90 °C programme. Load less laundry. Prewash. If required, pretreat stains. Select Cottons 90 °C programme.



Soaking

Load laundry of the same colour.

Pour soaking agent/detergent into compartment II according to the manufacturer's instructions. Set **Cottons** **30 °C** programme and select **Start/Reload** . After approx. 10 minutes, select **Start/Reload** . After the required soaking time, reselect **Start/Reload** if the programme is to be continued or change the programme.



Starching

Laundry must not be treated with fabric softener.

Starching is possible in all washing programmes if liquid starch is used. Add starch to the fabric softener compartment in accordance with the manufacturer's instructions.



Dyeing/bleaching

Dye in small quantities only. Salt can corrode stainless steel.
Observe the dye manufacturer's instructions.
Do **not** bleach laundry in the washing machine.

Care



- Risk of electric shock! Pull out the mains plug!
- Risk of explosion! No solvents!

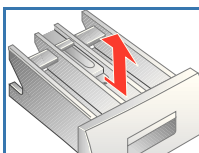
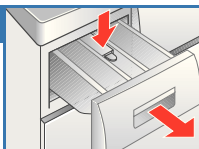
Machine housing, control panel

- Wipe with a soft, damp cloth.
- Do not use any abrasive cloths, scourers or cleaning agents (stainless steel cleaners).
- Immediately remove laundry and cleaning agent residues.
- Do not clean the appliance with a water jet.

Clean the detergent drawer ...

... if it contains detergent or fabric softener residues.

1. Pull out the drawer up to the stop position, press down the latch on the insert and remove the drawer completely.
2. Remove insert: pull insert upwards with finger.
3. Clean the detergent dispenser and the insert with water and a brush.
4. Refit the insert and secure in place (the cylinder should fit over the guide pin).
5. Insert the detergent drawer.
6. Leave the detergent drawer open so that residual water can evaporate.



Drum

Leave the washing machine door open after washing so that the drum can dry. Rust stains – use chlorine-free cleaning agent, not steel wool.

Descaling *No laundry in the machine!*

This is not necessary if the detergent is dosed correctly. However, if it is necessary, follow the instructions of the descaler manufacturer. Suitable descaling products can be purchased from our website or customer service. →page 13

Information on the display

A:01	Please close the door immediately because of rising water level. In pause status P:01 and P:02 are displayed alternately.
A:02	Door is locked due to safety reasons (water level and/or temperature are too high); in pause status, P:02 and P:03 are displayed alternately. If you need to open the door, wait for the temperature to drop or drain the water (e.g. select Empty program).
A:03	Door cannot be locked/unlocked due to high temperature of the door lock. Wait a moment and try again.
	Flashing (no water supply): Tap turned on? Inlet filter blocked? Clean filter. →page 11 Supply hose kinked or blocked?
E:18	Clean drain pump; →page 11 outlet pipe/drainage hose blocked.
other displays	Switch off the appliance, wait 5 seconds and switch it back on. If the display appears again, call the customer service →page 13

Maintenance

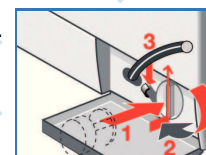
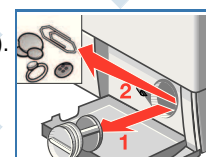
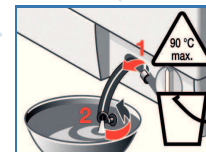
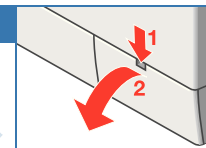


- Risk of scalding! Allow detergent solution to cool down!
- Turn off the tap!

Drain pump

– Set the programme selector to ● **Off**, disconnect the mains plug.

1. Open and remove the service flap.
2. Release the drainage hose from the clip. Remove the sealing plug from the drainage hose, allow the detergent solution to flow out. Push the sealing cap back in.
3. Remove the pump cap. Remove foreign objects/loose debris/fluff from inside and clean the pump. (impeller in the pump must be able to rotate).
4. Clean any residual lye or fluff from the thread of the pump cap and pump housing.
5. Attach the pump cap and screw it on tight until the stop, handle is upright. Place the drainage hose back in the retainer.
6. Place the service flap back on and close.



To prevent unused detergent from flowing straight into the drain during the next wash cycle: pour 1 litre of water into compartment II and start the **Empty** program. Then select and start a new washing programme with detergent as usual.

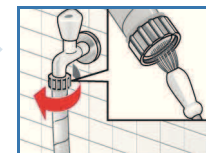
Filter in the water inlet hose

Reduce the water pressure in the supply hose:

1. Turn off the tap.
2. Select any programme (except **Spin** / **Empty**).
3. Touch **Start/Reload** button and allow the programme to run for approx. 40 seconds.
4. Set the programme selector to ● **Off**. Disconnect the mains plug.

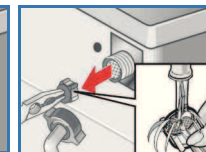
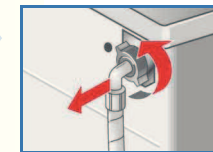
Clean the filter:

1. Remove the supply hose from the tap. Clean the filter with a small brush.



or

Remove the supply hose from the rear of the appliance. Remove the filter with pliers and clean.

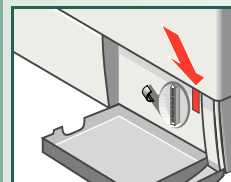


2. Reconnect the supply hose and check if it is tight.

What to do if ...

- Water is leaking out.
 - Fit/refit drainage hose correctly.
 - Tighten the screw connection of the supply hose.
- No water supply. Detergent not dispensed.
 - **Start**/Reload ▷ not selected?
 - Water tap not turned on?
 - Supply hose filter blocked? Clean the filter. →page 11
 - Supply hose kinked or trapped?
- Washing machine door cannot be opened.
 - Safety function active. Programme stopped? →page 4
 - ☐ (Rinse stop = no final drain/spin) selected? →page 6
 - Can be opened by emergency release only. →page 13
- Programme does not start.
 - **Start**/Reload ▷ or ⏻ **Finish-in time** selected?
 - Washing machine door closed?
- Detergent solution is not drained.
 - Clean the drain pump. →page 11
 - Clean waste pipe and/or drainage hose.
- Water not visible in the drum.
 - Not a fault - water below the visible area.
- Spin result not satisfactory.
 - Wash small and large items of laundry together.
 - 🧺 **Easy-iron** selected? →page 6
 - Speed selected too low? →page 6
- Spin cycle performed several times.
 - Not a fault - unbalanced load detection system adjusts the imbalance.
- Compartment ☼ not rinsed out completely.
 - Remove the insert. Clean detergent drawer and insert. →page 10
- Odour formation in the washing machine.
 - Run the **Drum Clean** 🌡️ 90 °C programme without laundry.
 - Use standard detergent.
- Foam escapes from the detergent drawer.
 - Too much detergent used?
 - Mix 1 tablespoon of fabric softener with ½ litre of water and pour into compartment II in the detergent drawer.
 - Reduce detergent dosage for the next wash cycle.
- Excessive noise, vibrations and “wandering” during spin cycle.
 - Are the appliance feet fixed? Secure the appliance feet. →*Installation instructions, page 5*
 - Transport bolts removed? Remove transport bolts. →*Installation instructions, page 3*
- Display panel/indicator lamps do not light up while the appliance is running.
 - Power failure/off? Interrupted programme will be resumed when power returns.
 - Circuit breaker tripped? Reset the circuit breaker/ change the fuse.
 - If the fault occurs repeatedly, call the customer service.
- Programme sequence longer than usual.
 - Not a fault - unbalanced load detection system adjusts imbalance by repeatedly distributing the laundry.
 - Not a fault - foam detection system active - adds an additional rinse cycle.
- Detergent residues on the laundry.
 - Occasionally, phosphate-free detergents contain water-insoluble residues.
 - Select **Rinse** 🚿 or brush the laundry after washing.
- If you cannot correct a fault yourself or a repair is required:
 - Turn the programme selector to ● **Off** and pull the mains plug out of the socket.
 - Turn off the tap and call the customer services. →page 13

Emergency release e.g. in the event of power failure



Interrupted programme will be resumed when power returns. However, if the laundry has to be removed, the washing machine door can be opened as follows:



Risk of scalding.
The detergent solution and laundry may be hot. If possible, leave it to cool down. Do not reach into the drum if it is still rotating. Do not open the washing machine door if water can be seen through the glass.

- Set the programme selector to ● **Off** and disconnect the mains plug.
- Drain the detergent solution. →page 11
- Pull the emergency release with a tool and release. The washing machine door can then be opened.

Customer service

- If you cannot rectify the fault yourself →page 12: *What to do if ...*, please contact our customer service. We will always find a suitable solution and will avoid a visit from a service technician wherever possible.
- The contact details for all countries can be found in the enclosed customer service directory.
- Please give the customer service the product number (E-Nr.) and the production number (FD) of the appliance.

E-Nr. _____ FD _____

Product number Production number

You will find the identification plate containing this information on the frame of the open door, and of the rating plate on the back of the appliance.

Rely on the professionalism of the manufacturer. Please contact us. This will ensure that the repair is carried out by trained service technicians who arrive equipped with genuine spare parts for your appliance.



Washing machine

WAS20460SG



BOSCH

en Instruction manual