

## Your new dryer

**Congratulations!** - You have chosen a modern, high-quality domestic appliance from Siemens.

A distinctive feature of the condensation dryer is its low energy consumption.

Every dryer which leaves our factory is carefully checked to ensure that it functions correctly and is in perfect condition.

Should you have any questions, our after-sales service will be pleased to help.

### Environmentally-responsible disposal

Dispose of packaging in an environmentally-responsible manner.

This appliance is designated according to European directive 2002/96/EC which governs waste electrical and electronic equipment (WEEE).

This directive provides the framework for the EU-wide collection and reuse of used appliances.

For further information about our products, accessories, spare parts and services, please visit: [www.siemens-home.com](http://www.siemens-home.com)

## Contents

	Page
■ Preparation	2
■ Setting the programmes	2
■ Drying	3/4
■ Notes on laundry	5
■ Cleaning and care	6
■ Overview of programmes	7
■ Short spin / Refresh	8/9
■ Installation	10
■ Frost protection / Transport	10
■ Technical data	11
■ Optional accessories	11
■ What to do if... / After-sales service	12
■ Safety instructions	13

For selecting the settings. **Menu** **Change**

For changing all the settings in the display panel.

**1 -24 hrs** End of the programme after ... (depending on the programme selected, e.g. 1:54h → 2h; you can always select up to the next full hour).

**0, 1, 2, 3, 4** There are four buzzer volume settings: 0 (off), 1 (quiet), 2 (normal), 3 (loud), 4 (very loud).

**On-Off** Provides protection against unintentional changes to the functions set (press and hold the **Menu** button for 5 seconds).

**0, 1, 2, 3** The degree of dryness for **Cottons/Coloureds**, **Easy-Care** and **Rapid 40** can be finely adjusted: 0 (low) - 3 (very high).

**600-1800** The spin speed that was used in the washing machine; for more precise indication of the projected drying duration only.

## Intended use

- only for domestic use.
- only to be used for drying, refreshing or unwrinkling fabrics that have been washed with water.

**Do not leave children unsupervised near the dryer.**  
**Keep pets away from the dryer.**

## Preparing for

installation, see page 8

**Never operate the dryer if it is damaged.**  
**Inform your after-sales service.**

**Only if your hands are dry.**  
**Only hold the plug by the plug casing.**

**Inspecting the dryer**

**Connecting the mains plug**

## Sorting and loading laundry

**Remove all objects from pockets.**  
**Pay particular attention to cigarette lighters.**  
**The drum must be empty before filling.**  
**If necessary, fill the water tank for Steam Refresh/Drying programmes → page 8.**

See programme overview on page 7.  
See also separate instructions for "basket for woollens" (depending on the model)

## Selecting and adjusting the programme

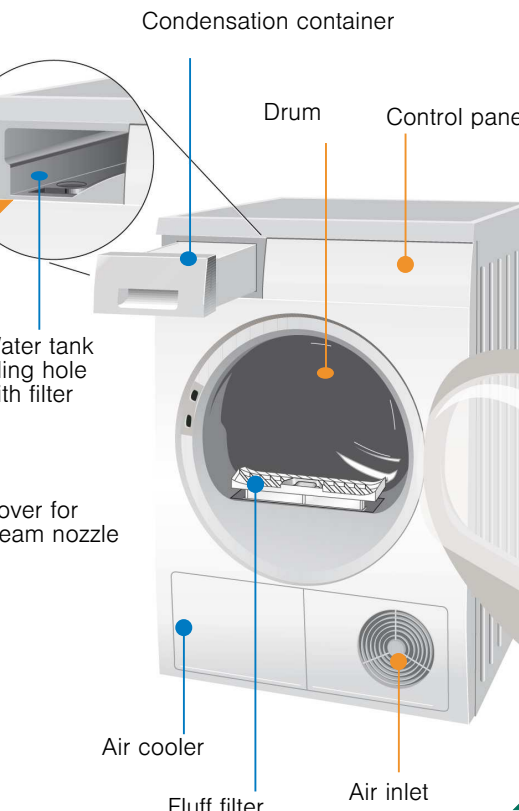
Select the drying programme ...

... and adapt to individual requirements

All buttons are sensitive, a light touch is enough!

Press the Start/Stop button

## Drying



## Drying / Short spin / Refresh

## Emptying condensation

- Empty the container **after** each drying cycle, not during drying!
- Remove the container, holding it level.
  - Pour out condensation.
  - Push the container back in until it clicks into place.

## Cleaning the fluff filter

- Open the door, remove the filter and fold open.
- Remove the fluff (by wiping the filter with your hand).
- Close the filter, insert it again and close the door.
- Remove fluff from the door and the area around it. Very dirty or blocked filters should be rinsed under warm water, and then dried thoroughly.

## Clean the filter in the water tank if it is dirty

- Remove the condensation tank.
- Remove the filter.
- Clean the filter under running water.
- Re-insert the filter and push in the condensation tank until it clicks into place.

## Switching off the dryer

Turn the programme selector to **Off**.  
Do not leave damp laundry in the dryer.

## Removing the laundry

The automatic Easy Iron function moves the drum at certain intervals. The load remains loose and soft for an hour (or two hours if you manually select the **Less Ironing** function, depending on the model.)

## Programme end

once → lights up in the display.

## Interrupt programme

The drying cycle can be interrupted for a brief period so that laundry may be added or removed. The selected programme must then be continued until it is finished.

**Hot steam may escape during the Steam Drying / Steam Refresh programmes.**

- Open the door. The drying cycle is paused.
- Remove or add laundry and close the door.
- If required, select a new programme and additional functions.
- Press the **Start/Stop** button.

## Information on laundry ...

### Labelling of fabrics

Follow the manufacturer's care information.

- Drying at normal temperature.
- Dry at a low temperature → select **°C<sub>1</sub> Low Heat** as well.
- Do not machine dry.

**Do not tumble-dry the following fabrics:**

- Airtight fabrics (e.g. rubber-coated fabrics).
- Delicate materials (silk, curtains made from synthetic material) → they may crease.
- Oil-stained laundry.

### Drying tips

- To ensure a consistent result, sort the laundry by fabric type and drying programme.
- Close zips, hooks and eyes, and do up any buttons. Tie belts, apron strings etc. together.
- Do not overdry easy-care laundry → risk of creasing. Allow laundry to finish drying in the air.
- Do not iron laundry immediately after drying, fold items up and leave for a while → the remaining moisture will then be distributed evenly.
- Knitted fabrics (e.g. T-shirts, jerseys) often shrink slightly the first time they are tumble-dried. → Do not select the **Cupboard Dry Extra** programme.
- Starched laundry is not always suitable for dryers → starch leaves behind a coating that adversely affects the drying operation.
- When washing laundry that is to be tumble-dried afterwards, dose the fabric softener according to the manufacturer's instructions.
- With a small load, use the Timed Program.

### Tips for Short spin/refreshing

- Use your dryer for unwrinkling and refreshing fabrics.
- Short spin cycle for reducing creasing.
- Refresh cycle for eliminating odours from fabrics.

**Do not use Short spin/Refresh for the following fabrics:**

- Wool, leather, fabrics with metal, wooden or plastic parts.
- Wax and oil jackets.

- Sort the laundry by colour and put on separate short spin/refresh cycles to prevent the colours from bleeding.
- These programmes do not remove stains → stains must be treated and removed beforehand.
- For best results, so that the laundry will have as few creases as possible, remove each item immediately after the programme has finished and hang on a hanger to finish drying. Pull clothes into shape if required.

### Environmental protection/energy-saving tips

- Before drying, spin the laundry thoroughly in the washing machine → the higher the spin speed, the shorter the drying time will be (consumes less energy), also spin easy-care laundry.
- Use the maximum recommended capacity, but do not exceed it → Page 7, "Programme overview".
- Make sure the room is well ventilated during drying.
- Clean the fluff filter after each drying cycle → page 4.
- Keep the air cooler clean → page 6 "Cleaning and care".
- Keep the supply of cool air unobstructed → Do not cover or block the cooling grill.

## Cleaning and care

**Only when switched off!**

### Dryer housing, control panel, air cooler, moisture sensors

Wipe with a soft, damp cloth.  
Do not use harsh cleaning agents and solvents.  
Remove detergent and cleaning agent residue immediately.  
During drying, water may collect between the door and seal. This does not affect your dryer's functions in any way.

Clean the protective filter 3 - 4 times a year or if **flashes** after the fluff filter has been cleaned.

### Air cooler / protective filter

When cleaning, only remove the protective filter. Clean the air cooler behind the protective filter once a year.

- Allow the dryer to cool.
- Residual water may leak out, so place an absorbent towel underneath the maintenance door.

- Unlock the maintenance door.
- Open the maintenance door fully.

- Turn both locking levers towards each another.
- Pull out the protective filter/air cooler.

**Do not damage the protective filter or air cooler.**  
**Clean with warm water only. Do not use any hard or sharp-edged objects.**

- Clean the air cooler thoroughly. Allow to drip dry.
- Clean the seals.

- Re-insert the protective filter/air cooler, with the handle facing down.
- Turn back both locking levers.
- Close the maintenance door until the lock clicks into place.

### Moisture sensors

The dryer is fitted with stainless steel moisture sensors. The sensors measure the level of moisture in the laundry. After a long period of operation, a fine layer of limescale may form on the sensors.

- Open the door and clean the moisture sensors with a damp sponge which has a rough surface.

**Do not use steel wool or abrasive materials.**

### Cover for steam nozzle in the drum

After lengthy operation, limescale and fluff may accumulate on the cover of the steam nozzle. Clean regularly.

- Open the door and remove the cover with a screw driver. Clean the cover under running water.
- Push and click the protective cap back in place.

## Programme overview

After drying ...

Iron lightly iron

Do not iron

Mangle

Cottons/Coloureds

Iron Dry

Cupboard Dry

Cupboard Dry Extra

Iron Dry

Cupboard Dry

Cupboard Dry Extra

Steam Drying

Minimum Iron Daily

Minimum Iron Shirts

Steam Refresh

Professional

Leisure

Outdoor

Woollens finish

Lingerie

Rapid 40

Programme time

max. 8 kg

max. 3.5 kg

max. 2.5 kg

max. 1.5 kg

max. 1.5 kg

max. 1.5 kg

max. 1.5 kg

max. 3 kg

max. 1 kg

max. 2 kg

max. 3 kg

For whites and coloureds made of cotton or linen.

For non-iron laundry made of synthetic fibres and mixed fabric, cotton.

For smoothing hard-wearing and easy-care fabrics. Steam smooths the fabrics.

Further information → Page 8.

For freshening hard-wearing and easy-care fabrics. Steam freshens up the fabrics.

Further information → Page 8.

For fabrics with membrane coating, waterproof fabrics, functional clothing, fleece (jackets/trousers with removable inner lining are to be dried separately).

For woollen fabrics suitable for machine-washing. Fabrics become fluffier but not dry.

Remove fabrics once the programme has ended and allow to dry.

For lingerie made of synthetic fibres, cotton or blended fabric.

For laundry that needs to be dried quickly, e.g. items made of synthetic fibres, cotton or mixed fabrics. The values may differ from those given depending on the type of fabric, composition of the laundry to be dried, the residual moisture in the fabric and size of the load.

For pre-dried, multi-layered delicate fabrics made of acrylic, or small, individual items of laundry. Also for subsequent drying.

03 10 / 9000516820

Siemens Electrogeräte GmbH  
Carl-Wery Str. 34  
81739 Munich/Germany  
WT46S596GB



## Steam Drying - Steam Refresh



### Steam programmes for unwrinkling or refreshing

- Your dryer has unwrinkling and refreshing programmes that can be used for removing odours and minimising creasing in dry fabrics. Steam smooths and freshens up items of clothing.

- Sorting the laundry according to size, weight, fabric and colour is necessary.
- Only use Short spin/Refresh for fabrics with the same properties.
- During steam generation (required), additional noises may occur.
- The result of refreshing and unwrinkling may vary depending on the type of fabric, size of the load and programme selected.
- After unwrinkling or refreshing, all fabrics must be removed immediately and hung crease-free on a hanger or a washing line for 15 minutes.

## Programmes



Please observe the treatment symbols and manufacturer's instructions on the fabrics. Do not use Short spin/Refresh for fabrics made of wool, leather, containing metal or wooden parts as well as wax and oil jackets! Do not use any dryer cleaning sets!

### Steam Drying

#### Minimum Iron Shirts

Suitable for easy-care fabrics, e.g. formal shirts. Fabrics are smoothed. You can expect optimum results if "non-iron" appears on the care label. After the programme has finished, the items must be removed immediately and hung crease-free on a hanger or washing line for 15 minutes. The programme is for up to 5 formal shirts.

#### Minimum Iron Daily

Suitable for hard-wearing cotton fabrics, e.g. bed linen, tablecloths or formal shirts. Fabrics are smoothed. You can expect optimum results if "non-iron" appears on the care label. After the programme has finished, the items must be removed immediately and hung crease-free on a hanger or washing line for 15 minutes. The programme is for up to 5 formal shirts or 1 to 2 larger items.

### Steam Refresh

#### Professional

Suitable for refreshing suits, jackets and trousers, or dry-clean items that cannot be washed in the washing machine → see the care label. The programme only refreshes fabrics and does not clean them. After the end of the programme, the items must be removed immediately. Programme for 1 suit or 1 to 2 smaller items.

#### Leisure

Suitable for refreshing casual wear made of cotton or artificial fibres. Fabrics must be suitable for dryers → see the care label. The programme refreshes fabrics only, and does not clean them. After the programme has finished, the fabrics must be removed immediately. Programme for 1 pullover, 2 pairs of trousers or formal shirts.

## Steam Drying - Steam Refresh

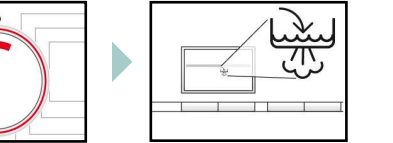


Your water tank empties automatically after the programme has finished. Cleaning is therefore not required.

### Filling the water tank:

Fill the dryer's water tank with distilled water before every **Steam Drying - Steam Refresh** cycle.

- Move the programme selector to **Steam Drying** or **Steam Refresh**. The symbol appears in the display.



- Remove the condensation tank completely.



Before every **Steam Drying - Steam Refresh** cycle, fill the water tank with distilled water only. Do not use tap water, condensation or additives.

- Fill the water tank. Use the jug supplied.



If the water tank filter is dirty → *clean the filter in the water tank. See page 4.*



- Pour the distilled water into the filling hole on the water tank, until the symbol goes out on the display panel.



If drying the recommended load, approximately 250 to 300 ml of distilled water is used in the **Steam Drying - Steam Refresh** programmes.

- Insert the condensation container all the way.



- Start the **Steam Dry** or **Steam Refresh** programme.



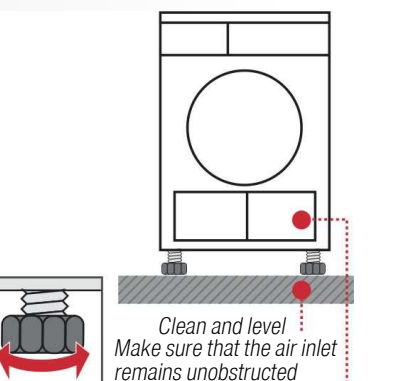
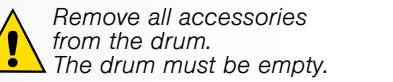
## Installation



- Scope of delivery: dryer, installation and instruction manual, jug, basket for woollens (*depending on the model*).
- Check dryer for transport damage.
- The dryer is heavy. Do not attempt to lift it on your own.
- Be careful to avoid sharp edges.
- Do not install in a room where there is a risk of freezing. Freezing water may cause damage.
- If in doubt, have the appliance connected by a specialist.
- Do not lift the dryer by protruding parts (e.g. the door) - risk of breakage.

### 1. Setting up the dryer

- The appliance plug must always be accessible.
- Ensure that the appliance is installed on a clean, level and firm surface.
- Keep the cooling grille on the front of the dryer clear.
- Keep the area around the dryer clean.
- Level the dryer using the threaded feet. Use a spirit level.
- Do not remove the threaded feet under any circumstances.



Do not install the dryer behind a door or sliding door, which could prevent or restrict opening of the dryer door. This will prevent children from locking themselves in and putting their lives in danger.

### 2. Mains connection

- Connect to an AC earthed socket. If in doubt, have the socket checked by a specialist.
- The mains voltage and the voltage shown on the rating plate (→ *Page 11*) must be the same.
- The connected load and necessary fuse protection are specified on the rating plate.

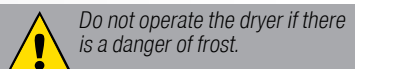
## Frost protection / Transport



### Preparation

- Empty the condensation container → *page 4*.
- Select any programme using the programme selector.
- Press the **Start/Stop** button → condensation is pumped into the container.
- Wait 5 min., and then empty the condensation container again.
- Turn the programme selector to **Off**.


The water tank must not contain any distilled water. If necessary, run the Steam/Refresh programme.



## Technical data

● <b>Dimensions (DxWxH)</b>	60 x 60 x 85 cm (adjustable height)
<b>Weight</b>	approximately 43.5 kg
<b>Max. capacity</b>	8 kg
<b>Condensation container</b>	4.0 l
<b>Water tank</b>	approx. 0.4 l
<b>Connection voltage</b>	220-240 V
<b>Connected load</b>	max. 2800 W
<b>Fuse protection</b>	13 A
<b>Ambient temperature</b>	5 - 35 °C
<b>Product number</b>	Inside of door
<b>Production number</b>	

The rating plate can be found on the back of the dryer.

 <b>Consumption rates</b>	These are guide values determined under standard conditions.		
	Spin speed in rpm (residual moisture)	Drying time in min.**	Energy consumption in kWh**
<b>Cottons/Coloureds 8 kg</b>			
Cupboard Dry*	1400 (approx. 50 %)	105	3.74
	1000 (approx. 60 %)	122	4.49
	800 (approx. 70 %)	139	5.17
Iron Dry*	1400 (approx. 50 %)	83	2.24
	1000 (approx. 60 %)	100	3.44
	800 (approx. 70 %)	117	3.86
<b>Easy-Care 3.5 kg</b>	1000	39	1.05
Cupboard Dry*	800 (approx. 40 %)	42	1.35
	600 (approx. 50 %)	51	1.65

\*Test programme to DIN EN 61121

\*\*The values may differ from those given, depending on overvoltage and undervoltage, the type of fabric, composition of the laundry to be dried, the residual moisture in the fabric and the size of the load.

### Drum interior light (bulb E14, 25 W)

The drum is illuminated after the door is opened or closed, and after the programme has started. The light goes out automatically. To change the bulb → *page 12*.

## Optional accessories

(order from the after-sales service using the order number)

WZ 20160	<b>Connection fittings for condensation outlet</b> The condensation is conveyed directly via a hose.
WZ 20310	<b>Washer-dryer stack connection set</b> The dryer can be placed on top of a suitable washing machine with the same width and depth to save space. This connection set <b>must</b> always be used to secure the dryer to the washing machine.
WZ 20300	Same as WZ 20310, but with pull-out worktop.
WZ 20290	<b>Installation underneath the worktop</b> <b>Risk of electric shock!</b> Instead of the appliance covering plate, you must have a metal cover fitted by an expert.

## What to do if...



If you cannot rectify a fault yourself, please contact our after-sales service. We will always find an appropriate solution and will avoid unnecessary visits by engineers. Trust the expertise of the manufacturer and rest assured that the repair will be carried out by trained service technicians using original spare parts. The contact details of your local after-sales service can be found in the enclosed **after-sales service** directory, or by calling one of these numbers:  
– **GB** 0844 8928999  
– **IE** 01450 2655

When contacting the after-sales service, please quote the appliance's product number (E no.) and production number (FD) (see the inside of the door). Set the programme selector to **Off** and remove the appliance plug from the socket.

● The <b>Start/Stop</b> indicator light does not come on.	Mains plug plugged in? Programme selected?
● The  symbol and <b>Start/Stop</b> indicator light are flashing.	Empty the condensation container → <i>page 4</i> . Check the condensation outlet hose, if applicable (kink).
● The  symbol and <b>Start/Stop</b> indicator light are flashing.	Clean the air cooler → <i>page 6 "Cleaning and care"</i> . Clean the fluff filter → <i>page 4</i> .
● The  symbol flashes.	Is the water tank empty? Filling with distilled water → <i>page 9</i> .
● The <b>Steam Drying - Steam Refresh</b> does not start.	The filter in the water tank may have become dirty. If so, clean the filter in the water tank → <i>page 4</i> .
● Dryer does not start.	Has the <b>Start/Stop</b> button been pressed? Is the door closed? Programme set? Ambient temperature greater than 5 °C?
● Water is leaking out.	Make sure the dryer is level. Clean the air cooler seal.
● The door opens by itself.	Push the door closed until you hear it click into place.
● Items crease even though the <b>Steam Drying - Steam Refresh</b> programme has been selected.	Laundry load exceeded? Remove articles of clothing immediately after the end of the programme, hang up and pull into shape.
● The required degree of dryness was not achieved or the drying time was too long.	Clean the fluff filter → <i>page 4</i> . Empty the condensation container → <i>page 4</i> . Check the water (if applicable). Ambient temperature above 30 °C ? → Ensure sufficient ventilation. Cooling grille may be obstructed → keep clear. Has an unsuitable program been set? → <i>page 7</i> . Is there enough free space around the dryer? Ensure that air can circulate around it. Power failure → Restart the dryer. Fine layer of limescale on the moisture sensors → clean the moisture sensors → <i>page 6</i> .
● Laundry damp.	Use the next higher drying programme or the Timed Program, in addition → <i>page 7</i> . Warm laundry feels damper than it really is.
● The humidity in the room increases significantly.	Make sure the room is sufficiently ventilated. Is the air inlet obstructed? → Keep the inlet clear. Ensure that the air cooler is in use.
● One or more programme status indicator lamps are flashing.	Clean the filter and air cooler → <i>page 4/6</i> . Check the installation conditions → <i>page 10</i> . Switch off, allow to cool, switch on again and restart the programme.
● The interior light (depending on the model) does not work.	Unplug the appliance plug, fold back the cover cap on the inside above the door (using a Torx 20 screwdriver) and replace the bulb. Close the cover cap.

## Safety instructions



### Emergency ONLY use the dryer...

- Pull the appliance plug out of the socket immediately or disconnect the fuse.
- In rooms inside the house.
- For drying or unwrinkling/refreshing fabrics.

### The dryer must NEVER...

- Be used for purposes other than those described above.
- Be modified in terms of its technology or properties.
- The dryer must not be used by children or persons who have not been instructed in its use.
- Do not leave children unsupervised near the dryer.
- Keep pets away from the dryer.
- Remove all objects from pockets, and lighters in particular → **risk of explosion**.
- Do not lean or sit on the door → **risk of tipping**.
- Open the door carefully. Hot steam may escape. The clothes and drum may be hot → **risk of burns**.

### Installation

- Secure loose leads or hoses, otherwise there is a **risk of tripping**.
- Below 0 °C there is a possibility of frost damage.

### Mains connection

- Connect the dryer according to specifications to an AC earthed socket, otherwise it cannot be guaranteed that the appliance is completely safe.
- The cable cross-section must be sufficient.
- Only use earth-leakage circuit breakers with the following symbol:
- The appliance plug and socket must be compatible.
- Do not use multiple plugs/connectors and/or extension cables.
- Do not touch or hold the appliance plug with wet hands → **risk of electric shock**.
- Never pull the appliance plug out of the socket by its cable.
- Do not damage the mains lead → **risk of electric shock**.

### Operation

- Only laundry must be loaded into the drum.
- Before switching on the dryer - check the contents.
- Do not use the dryer if the laundry has been in contact with solvents, oil, wax, grease or paint (e.g. hair setting spray, nail polish remover, stain remover, cleaning solvent, etc.) → **fire/explosion hazard**.
- Hazard caused by dust (e.g. coal dust, flour): do not use the dryer → **risk of explosion**.
- Do not put laundry containing foamed material/rubber in the dryer → elastic material may be destroyed and the dryer may be damaged due to possible deformation of the foamed material.
- Switch off the dryer once the programme has ended.
- For unwrinkling/refreshing fabrics, use distilled water only. Do not use condensation, tap water or additives.
- Distilled/condensation water is not for drinking.

### Defect

- Do not use the dryer if it is defective or if you suspect that it is. Repairs must only be carried out by the after-sales service.
- Do not use a dryer with a faulty mains lead. To prevent risks, a faulty mains lead must only be replaced by the after-sales service.
- Before changing the bulb of the interior light make absolutely sure you have pulled the appliance plug from the socket → **risk of electric shock**.

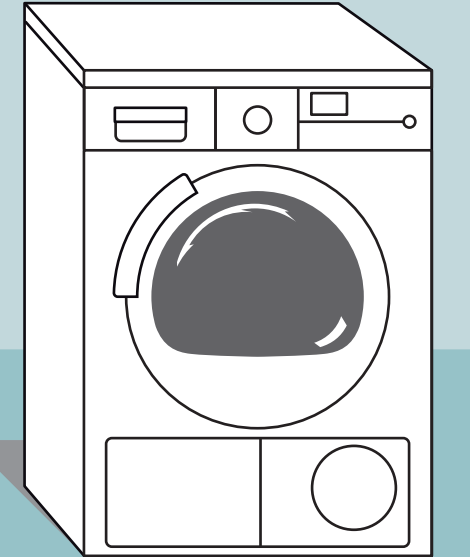
### Spare parts

### Disposal

- Only use genuine spare parts and accessories for safety reasons.
- Dryer: unplug the appliance plug, then cut the mains lead from the appliance. Dispose of the dryer at an approved public disposal facility.
- Packaging: keep all packaging out of reach of babies and children. → **danger of suffocation**.
- All materials are environmentally safe and recyclable. Dispose of in an environmentally-responsible manner.



Observe the safety instructions on page 13.



## Operating and installation instructions



Caution - risk of scalding.



Read these instructions before switching on the dryer.

en

SIEMENS



# Your new dryer


**Congratulations!** - You have chosen a modern, high-quality domestic appliance from Siemens.  
A distinctive feature of the condensation dryer is its low energy consumption.  
Every dryer which leaves our factory is carefully checked to ensure that it functions correctly and is in perfect condition.  
Should you have any questions, our after-sales service will be pleased to help.

**Environmentally-responsible disposal**  
Dispose of packaging in an environmentally-responsible manner.  
This appliance is designated according to European directive 2002/96/EC which governs waste electrical and electronic equipment (WEEE).  
This directive provides the framework for the EU-wide collection and reuse of used appliances.


For further information about our products, accessories, spare parts and services, please visit: [www.siemens-home.com](http://www.siemens-home.com)


Contents	Page
Preparation	2
Setting the programmes	2
Drying	3/4
Notes on laundry	5
Cleaning and care	6
Overview of programmes	7
Short spin / Refresh	8/9
Installation	10
Frost protection / Transport	10
Technical data	11
Optional accessories	11
What to do if... / After-sales service	12
Safety instructions	13

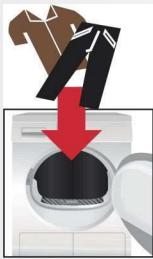
## Intended use

- only for domestic use.
  - only to be used for drying, refreshing or unwrinkling fabrics that have been washed with water.
-  Do not leave children unsupervised near the dryer.  
Keep pets away from the dryer.

## Preparing for installation, see page 8

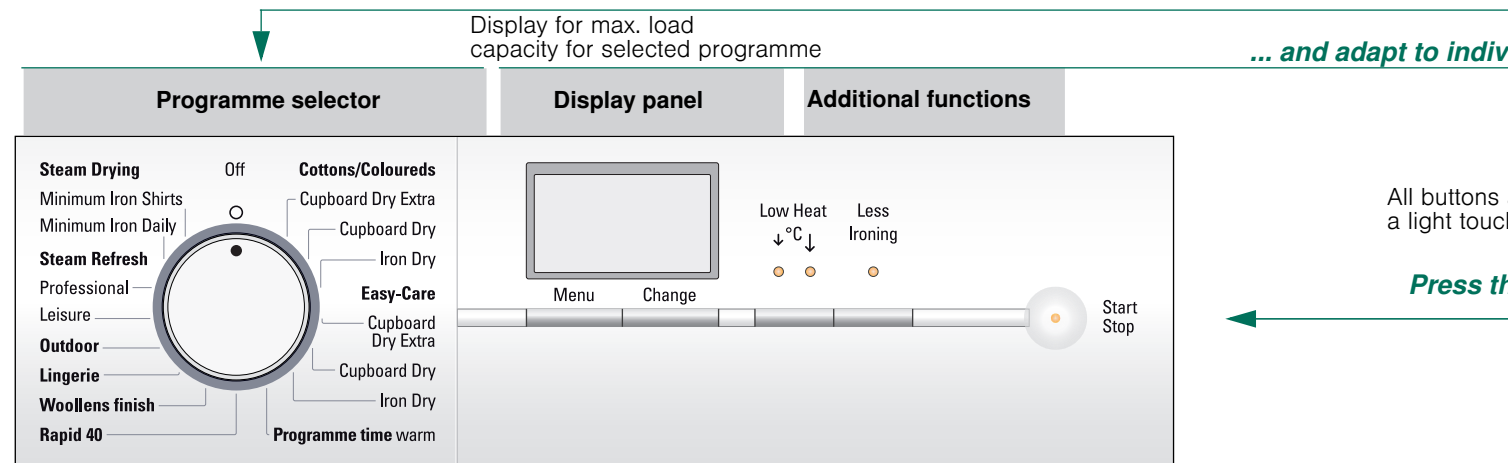
 Never operate the dryer if it is damaged.  
Inform your after-sales service.


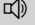
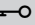






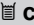
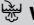
 Only if your hands are dry.  
Only hold the plug by the plug casing.



**Sorting and loading**  
Remove all objects from pockets.  
Pay particular attention to cigarette lighters.  
The drum must be empty before filling.  
If necessary, fill the water tank for Steam Refresh/Drying programmes → page 8  
See programme overview on page 7.  
See also separate instructions for "basket for v..." (depending on the model)

## Selecting and adjusting the programmes



For selecting the settings.		Menu	
For changing all the settings in the display panel.		Change	
1 - 24 hrs	End of the programme after ... (depending on the programme selected, e.g. 1:54h → 2h; you can always select up to the next full hour).	Electronic start timer	
0, 1, 2, 3, 4	There are four buzzer volume settings: 0 (off), 1 (quiet), 2 (normal), 3 (loud), 4 (very loud).	Signal	
On-Off	Provides protection against unintentional changes to the functions set (press and hold the <b>Menu</b> button for 5 seconds).	Appliance lock	
0, 1, 2, 3	The degree of dryness for <b>Cottons/Coloureds</b> , <b>Easy-Care</b> and <b>Rapid 40</b> can be finely adjusted: 0 (low) - 3 (very high).	Level of dryness	
600-1800 	The spin speed that was used in the washing machine; for more precise indication of the projected drying duration only.	Spin speed	
		 <b>Low Heat</b>	Reduced temperature for delicate fabrics; e.g. acrylic, polyamide, elastane or ...
		 <b>Less Ironing</b>	Reduces creasing and prolongs the anti-crinkle programme has finished; can be selected
		<b>Status indicators</b>	Indicators which show the programme selected: Drying, Iron Dry, Cupboard Dry, End / Ea
		<b>Service indicators</b>	
		 <b>clean</b>	Clean the fluff filter and/or air cooler → p
		 <b>container</b>	Empty the condensation container.
		 <b>water tank</b>	Fill the water tank with distilled water → p

# Drying

Inspecting the dryer

Connecting the mains plug

Loading laundry

woollens"

the programme

Drying programme ...

Individual requirements

are sensitive,  
h is enough!

the Start/Stop button

☐, for a longer drying  
acetate silk.

creasing phase after the  
d in one of two levels.

quences.  
asy Iron.

page 6.

page 9.



1  
2

3



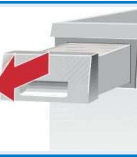
Drying / Short spin / Refresh



## Emptying condensation

Empty the container **after** each drying cycle, not during drying!

1. Remove the container, holding it level.
2. Pour out condensation.
3. Push the container back in until it clicks into place.



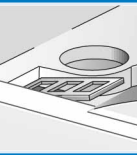
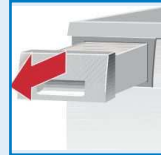
## Cleaning the fluff filter

1. Open the door, remove the filter and fold open.
2. Remove the fluff (by wiping the filter with your hand).
3. Close the filter, insert it again and close the door.
4. Remove fluff from the door and the area around it. Very dirty or blocked filters should be rinsed under warm water, and then dried thoroughly.



## Clean the filter in the water tank if it is dirty

1. Remove the condensation tank.
2. Remove the filter.
3. Clean the filter under running water.
4. Re-insert the filter and push in the condensation tank until it clicks into place.



## Switching off the dryer

Turn the programme selector to **Off**.  
Do not leave damp laundry in the dryer.



## Removing the laundry

The automatic Easy Iron function moves the drum at certain intervals. The load remains loose and soft for an hour (or two hours if you manually select the **Less Ironing** function, depending on the model.)

**Programme end** once → lights up in the display.

**Interrupt programme** removing or adding laundry.



The drying cycle can be interrupted for a brief period so that laundry may be added or removed. The selected programme must then be continued until it is finished.



Hot steam may escape during the Steam Drying / Steam Refresh programmes.

1. Open the door. The drying cycle is paused.
2. Remove or add laundry and close the door.
3. If required, select a new programme and additional functions.
4. Press the **Start/Stop** button.



# Information on laundry ...



## Labelling of fabrics

### Follow the manufacturer's care information.

- ☒ Drying at normal temperature.
- ☒ Dry at a low temperature → select ↓°C ↓ **Low Heat** as well.
- ☒ Do not machine dry.



### Do not tumble-dry the following fabrics:

- Airtight fabrics (e.g. rubber-coated fabrics).
- Delicate materials (silk, curtains made from synthetic material) → they may crease.
- Oil-stained laundry.



## Drying tips

- To ensure a consistent result, sort the laundry by fabric type and drying programme.
- Close zips, hooks and eyes, and do up any buttons. Tie belts, apron strings etc. together.
- Do not overdry easy-care laundry → risk of creasing. Allow laundry to finish drying in the air.
- Do not iron laundry immediately after drying, fold items up and leave for a while → the remaining moisture will then be distributed evenly.
- Knitted fabrics (e.g. T-shirts, jerseys) often shrink slightly the first time they are tumble-dried. → Do not select the **Cupboard Dry Extra** programme.
- Starched laundry is not always suitable for dryers → starch leaves behind a coating that adversely affects the drying operation.
- When washing laundry that is to be tumble-dried afterwards, dose the fabric softener according to the manufacturer's instructions.
- With a small load, use the Timed Program.



## Tips for Short spin/refreshing

- Use your dryer for unwrinkling and refreshing fabrics.
- Short spin cycle for reducing creasing.
- Refresh cycle for eliminating odours from fabrics.



### Do not use Short spin/Refresh for the following fabrics:

- Wool, leather, fabrics with metal, wooden or plastic parts.
- Wax and oil jackets.

- Sort the laundry by colour and put on separate short spin/refresh cycles to prevent the colours from bleeding.
- These programmes do not remove stains → stains must be treated and removed beforehand.
- For best results, so that the laundry will have as few creases as possible, remove each item immediately after the programme has finished and hang on a hanger to finish drying. Pull clothes into shape if required.

## Environmental protection/energy-saving tips

- Before drying, spin the laundry thoroughly in the washing machine → the higher the spin speed, the shorter the drying time will be (consumes less energy), also spin easy-care laundry.
- Use the maximum recommended capacity, but do not exceed it → Page 7, "Programme overview".
- Make sure the room is well ventilated during drying.
- Clean the fluff filter after each drying cycle → page 4.
- Keep the air cooler clean → page 6 "Cleaning and care".
- Keep the supply of cool air unobstructed → Do not cover or block the cooling grill.

# Cleaning and care



Only when switched off!

## Dryer housing, control panel, air cooler, moisture sensors

Wipe with a soft, damp cloth.

Do not use harsh cleaning agents and solvents.

Remove detergent and cleaning agent residue immediately.

During drying, water may collect between the door and seal. This does not affect your dryer's functions in any way.

Clean the protective filter 3 - 4 times a year or if ● flashes after the fluff filter has been cleaned.

## Air cooler / protective filter

When cleaning, only remove the protective filter. Clean the air cooler behind the protective filter once a year.

- Allow the dryer to cool.
- Residual water may leak out, so place an absorbent towel underneath the maintenance door.

1. Unlock the maintenance door.
2. Open the maintenance door fully.

3. Turn both locking levers towards each other.
4. Pull out the protective filter/air cooler.



Do not damage the protective filter or air cooler.

Clean with warm water only. Do not use any hard or sharp-edged objects.

5. Clean the air cooler thoroughly. Allow to drip dry.

6. Clean the seals.
7. Re-insert the protective filter/air cooler, with the handle facing down.
8. Turn back both locking levers.
9. Close the maintenance door until the lock clicks into place.

## Moisture sensors

The dryer is fitted with stainless steel moisture sensors. The sensors measure the level of moisture in the laundry. After a long period of operation, a fine layer of limescale may form on the sensors.

1. Open the door and clean the moisture sensors with a damp sponge which has a rough surface.

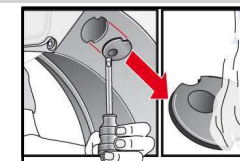
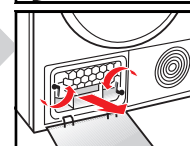
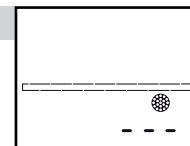


Do not use steel wool or abrasive materials.

## Cover for steam nozzle in the drum

After lengthy operation, limescale and fluff may accumulate on the cover of the steam nozzle. Clean regularly:

1. Open the door and remove the cover with a screw driver. Clean the cover under running water.
2. Push and click the protective cap back in place.







# Steam Drying - Steam Refresh

## i Steam programmes for unwrinkling or refreshing

- Your dryer has unwrinkling and refreshing programmes that can be used for removing odours and minimising creasing in dry fabrics. Steam smooths and freshens up items of clothing.
- Sorting the laundry according to size, weight, fabric and colour is necessary.
- Only use Short spin/Refresh for fabrics with the same properties.
- During steam generation (required), additional noises may occur.
- The result of refreshing and unwrinkling may vary depending on the type of fabric, size of the load and programme selected.
- After unwrinkling or refreshing, all fabrics must be removed immediately and hung crease-free on a hanger or a washing line for 15 minutes.

## Programmes

**!** Please observe the treatment symbols and manufacturer's instructions on the fabrics. Do not use Short spin/Refresh for fabrics made of wool, leather, containing metal or wooden parts as well as wax and oil jackets! Do not use any dryer cleaning sets!

### Steam Drying

#### Minimum Iron Shirts

Suitable for easy-care fabrics, e.g. formal shirts. Fabrics are smoothed. You can expect optimum results if "non-iron" appears on the care label. After the programme has finished, the items must be removed immediately and hung crease-free on a hanger or washing line for 15 minutes. The programme is for up to 5 formal shirts.

#### Minimum Iron Daily

Suitable for hard-wearing cotton fabrics, e.g. bed linen, tablecloths or formal shirts. Fabrics are smoothed. You can expect optimum results if "non-iron" appears on the care label. After the programme has finished, the items must be removed immediately and hung crease-free on a hanger or washing line for 15 minutes. The programme is for up to 5 formal shirts or 1 to 2 larger items.

### Steam Refresh

#### Professional

Suitable for refreshing suits, jackets and trousers, or dry-clean items that cannot be washed in the washing machine → see the care label. The programme only refreshes fabrics and does not clean them. After the end of the programme, the items must be removed immediately. Programme for 1 suit or 1 to 2 smaller items.

#### Leisure

Suitable for refreshing casual wear made of cotton or artificial fibres. Fabrics must be suitable for dryers → see the care label. The programme refreshes fabrics only, and does not clean them. After the programme has finished, the fabrics must be removed immediately. Programme for 1 pullover, 2 pairs of trousers or formal shirts.

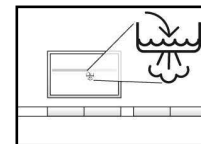
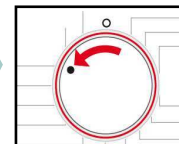
# Steam Drying - Steam Refresh

**i** Your water tank empties automatically after the programme has finished. Cleaning is therefore not required

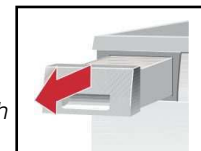
## Filling the water tank:

Fill the dryer's water tank with distilled water before every **Steam Drying - Steam Refresh** cycle.

1. Move the programme selector to **Steam Drying** or **Steam Refresh**. The ☁ symbol appears in the display.

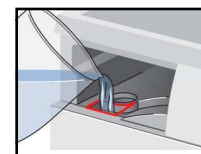


2. Remove the condensation tank completely.

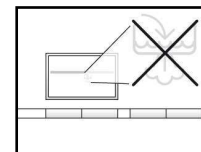


Before every **Steam Drying - Steam Refresh** cycle, fill the water tank with distilled water only. Do not use tap water, condensation or additives.

3. Fill the water tank. Use the jug supplied.



If the water tank filter is dirty → *clean the filter in the water tank.* See page 4.



4. Pour the distilled water into the filling hole on the water tank, until the ☁ symbol goes out on the display panel.

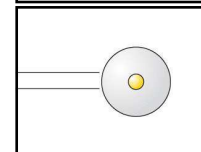


If drying the recommended load, approximately 250 to 300 ml of distilled water is used in the **Steam Drying - Steam Refresh** programmes.

5. Insert the condensation container all the way.



6. Start the **Steam Dry** or **Steam Refresh** programme.



Installation

- 
- Scope of delivery: dryer, installation and instruction manual, jug, basket for woollens (depending on the model).
  - Check dryer for transport damage.
  - The dryer is heavy. Do not attempt to lift it on your own.
  - Be careful to avoid sharp edges.
  - Do not install in a room where there is a risk of freezing. Freezing water may cause damage.
  - If in doubt, have the appliance connected by a specialist.
  - Do not lift the dryer by protruding parts (e.g. the door) - risk of breakage.

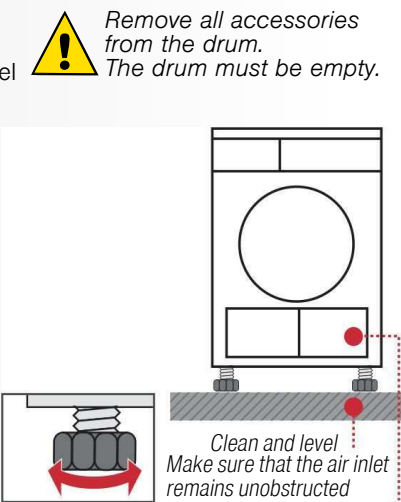
1.
- Setting up the dryer**
- The appliance plug must always be accessible.
  - Ensure that the appliance is installed on a clean, level and firm surface.
  - Keep the cooling grille on the front of the dryer clear.
  - Keep the area around the dryer clean.
  - Level the dryer using the threaded feet. Use a spirit level.
  - Do not remove the threaded feet under any circumstances.

Do not install the dryer behind a door or sliding door, which could prevent or restrict opening of the dryer door. This will prevent children from locking themselves in and putting their lives in danger.

2.
- Mains connection** see safety information → page 13.
- Connect to an AC earthed socket. If in doubt, have the socket checked by a specialist.
  - The mains voltage and the voltage shown on the rating plate (→ Page 11) must be the same.
  - The connected load and necessary fuse protection are specified on the rating plate.

Frost protection / Transport

- 
- Preparation**
1. Empty the condensation container → page 4.
  2. Select any programme using the programme selector.
  3. Press the **Start/Stop** button → condensation is pumped into the container.
  4. Wait 5 min., and then empty the condensation container again.
  5. Turn the programme selector to **Off**.
- The water tank must not contain any distilled water. If necessary, run the Steam/Refresh programme.



Technical data

● <b>Dimensions (DxWxH)</b>	60 x 60 x 85 cm (adjustable height)
<b>Weight</b>	approximately 43.5 kg
<b>Max. capacity</b>	8 kg
<b>Condensation container</b>	4.0 l
<b>Water tank</b>	approx. 0.4 l
<b>Connection voltage</b>	220-240 V
<b>Connected load</b>	max. 2800 W
<b>Fuse protection</b>	13 A
<b>Ambient temperature</b>	5 - 35 °C
<b>Product number</b>	Inside of door
<b>Production number</b>	

The rating plate can be found on the back of the dryer.

● <b>Consumption rates</b>	These are guide values determined under standard conditions.		
	Spin speed in rpm (residual moisture)	Drying time in min.**	Energy consumption in kWh**
<b>Cottons/Coloureds 8 kg</b>			
Cupboard Dry*	1400 (approx. 50 %)	105	3.74
	1000 (approx. 60 %)	122	4.49
	800 (approx. 70 %)	139	5.17
Iron Dry*	1400 (approx. 50 %)	83	2.24
	1000 (approx. 60 %)	100	3.44
	800 (approx. 70 %)	117	3.86
<b>Easy-Care 3.5 kg</b>			
Cupboard Dry*	1000	39	1.05
	800 (approx. 40 %)	42	1.35
	600 (approx. 50 %)	51	1.65

\*Test programme to DIN EN 61121  
\*\*The values may differ from those given, depending on overvoltage and undervoltage, the type of fabric, composition of the laundry to be dried, the residual moisture in the fabric and the size of the load.

- **Drum interior light (bulb E14, 25 W)**
- The drum is illuminated after the door is opened or closed, and after the programme has started. The light goes out automatically. To change the bulb → page 12.

Optional accessories (order from the after-sales service using the order number)

WZ 20160	<b>Connection fittings for condensation outlet</b> The condensation is conveyed directly via a hose.
WZ 20310	<b>Washer-dryer stack connection set</b> The dryer can be placed on top of a suitable washing machine with the same width and depth to save space. This connection set <b>must</b> always be used to secure the dryer to the washing machine.
WZ 20300	Same as WZ 20310, but with pull-out worktop.
WZ 20290	<b>Installation underneath the worktop</b> <b>Risk of electric shock!</b> Instead of the appliance covering plate, you must have a metal cover fitted by an expert.






# What to do if...



If you cannot rectify a fault yourself, please contact our after-sales service. We will always find an appropriate solution and will avoid unnecessary visits by engineers. Trust the expertise of the manufacturer and rest assured that the repair will be carried out by trained service technicians using original spare parts. The contact details of your local after-sales service can be found in the enclosed **after-sales service** directory, or by calling one of these numbers:


- GB 0844 8928999
- IE 01450 2655

When contacting the after-sales service, please quote the appliance's product number (E no.) and production number (FD) (see the inside of the door).  
Set the programme selector to **Off** and remove the appliance plug from the socket.

● The <b>Start/Stop</b> indicator light does not come on.	Mains plug plugged in? Programme selected?
● The  symbol and <b>Start/Stop</b> indicator light are flashing.	Empty the condensation container → <i>page 4</i> . Check the condensation outlet hose, if applicable (kink).
● The  symbol and <b>Start/Stop</b> indicator light are flashing.	Clean the air cooler → <i>page 6</i> " <i>Cleaning and care</i> ". Clean the fluff filter → <i>page 4</i> .
● The  symbol flashes.	Is the water tank empty? Filling with distilled water → <i>page 9</i> .
● The <b>Steam Drying - Steam Refresh</b> does not start.	The filter in the water tank may have become dirty. If so, clean the filter in the water tank → <i>page 4</i> .
● Dryer does not start.	Has the <b>Start/Stop</b> button been pressed? Is the door closed? Programme set? Ambient temperature greater than 5 °C?
● Water is leaking out.	Make sure the dryer is level. Clean the air cooler seal.
● The door opens by itself.	Push the door closed until you hear it click into place.
● Items crease even though the <b>Steam Drying - Steam Refresh</b> programme has been selected.	Laundry load exceeded? Remove articles of clothing immediately after the end of the programme, hang up and pull into shape.
● The required degree of dryness was not achieved or the drying time was too long.	Clean the fluff filter → <i>page 4</i> . Empty the condensation container → <i>page 4</i> . Check the water (if applicable). Ambient temperature above 30 °C ? → Ensure sufficient ventilation. Cooling grille may be obstructed → keep clear. Has an unsuitable program been set? → <i>page 7</i> . Is there enough free space around the dryer? Ensure that air can circulate around it. Power failure → Restart the dryer. Fine layer of limescale on the moisture sensors → clean the moisture sensors → <i>page 6</i> .
● Laundry damp.	Use the next higher drying programme or the Timed Program, in addition → <i>page 7</i> . Warm laundry feels damper than it really is.
● The humidity in the room increases significantly.	Make sure the room is sufficiently ventilated. Is the air inlet obstructed? → Keep the inlet clear. Ensure that the air cooler is in use.
● One or more programme status indicator lamps are flashing.	Clean the filter and air cooler → <i>page 4/6</i> . Check the installation conditions → <i>page 10</i> . Switch off, allow to cool, switch on again and restart the programme.
● The interior light (depending on the model) does not work.	Unplug the appliance plug, fold back the cover cap on the inside above the door (using a Torx 20 screwdriver) and replace the bulb. Close the cover cap.

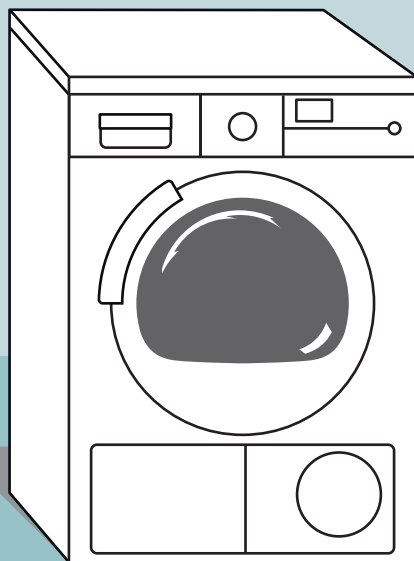
# Safety instructions



<b>Emergency</b> <b>ONLY use the dryer...</b>	– Pull the appliance plug out of the socket immediately or disconnect the fuse. – In rooms inside the house. – For drying or unwrinkling/refreshing fabrics.
<b>The dryer must NEVER...</b>	– Be used for purposes other than those described above. – Be modified in terms of its technology or properties.
<b>Hazards</b>	– The dryer must not be used by children or persons who have not been instructed in its use. – Do not leave children unsupervised near the dryer. – Keep pets away from the dryer. – Remove all objects from pockets, and lighters in particular → <b>risk of explosion</b> . – Do not lean or sit on the door → <b>risk of tipping</b> . – Open the door carefully. Hot steam may escape. The clothes and drum may be hot → <b>risk of burns</b> .
<b>Installation</b>	– Secure loose leads or hoses, otherwise there is a <b>risk of tripping</b> . – Below 0 °C there is a possibility of frost damage.
<b>Mains connection</b>	– Connect the dryer according to specifications to an AC earthed socket, otherwise it cannot be guaranteed that the appliance is completely safe. – The cable cross-section must be sufficient. – Only use earth-leakage circuit breakers with the following symbol:  – The appliance plug and socket must be compatible. – Do not use multiple plugs/connectors and/or extension cables. – Do not touch or hold the appliance plug with wet hands → <b>risk of electric shock</b> . – Never pull the appliance plug out of the socket by its cable. – Do not damage the mains lead → <b>risk of electric shock</b> .
<b>Operation</b>	– Only laundry must be loaded into the drum. Before switching on the dryer - check the contents. – Do not use the dryer if the laundry has been in contact with solvents, oil, wax, grease or paint (e.g. hair setting spray, nail polish remover, stain remover, cleaning solvent, etc.) → <b>fire/explosion hazard</b> . – Hazard caused by dust (e.g. coal dust, flour): do not use the dryer → <b>risk of explosion</b> . – Do not put laundry containing foamed material/rubber in the dryer → elastic material may be destroyed and the dryer may be damaged due to possible deformation of the foamed material. – Switch off the dryer once the programme has ended. – For unwrinkling/refreshing fabrics, use distilled water only. Do not use condensation, tap water or additives. – Distilled/condensation water is not for drinking.
<b>Defect</b>	– Do not use the dryer if it is defective or if you suspect that it is. Repairs must only be carried out by the after-sales service. – Do not use a dryer with a faulty mains lead. To prevent risks, a faulty mains lead must only be replaced by the after-sales service. – Before changing the bulb of the interior light make absolutely sure you have pulled the appliance plug from the socket → <b>risk of electric shock</b> .
<b>Spare parts</b> <b>Disposal</b>	– Only use genuine spare parts and accessories for safety reasons. – Dryer: unplug the appliance plug, then cut the mains lead from the appliance. Dispose of the dryer at an approved public disposal facility. – Packaging: keep all packaging out of reach of babies and children. → <b>danger of suffocation</b> . – All materials are environmentally safe and recyclable. Dispose of in an environmentally-responsible manner.



Observe the safety instructions on page 13.



## Operating and installation instructions

en



Caution - risk of scalding.



Read these instructions before switching on the dryer.

**SIEMENS**