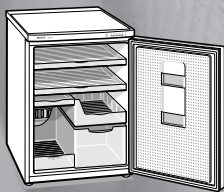




KTR..

en Operating instructions



BOSCH

en Index

Information concerning disposal	3	Arranging food in the appliance	8
Safety and warning information	3	Usable capacity	9
Installation	5	Sticker “OK”	9
Changing over the door hinges	5	Interior fittings	9
Connecting the appliance	6	Switching off the appliance	10
Your new appliance	6	Cleaning the appliance	10
Fascia	7	Tips for saving energy	11
Note ambient temperature and ventilation	7	Operating noises	11
Switching on the appliance	8	Eliminating minor faults yourself	12
		Customer service	13

Information concerning disposal

Disposal of packaging

The packaging protects your appliance from damage during transit. All packaging materials are environmentally friendly and recyclable. Please contribute to a better environment by disposing of packaging materials in an environmentally-friendly manner.

Please ask your dealer or inquire at your local authority about current means of disposal.

Disposal of your old appliance

Old appliances are not worthless rubbish! Valuable raw materials can be reclaimed by recycling old appliances.



This appliance is labelled in accordance with European Directive 2002/96/EG concerning used electrical and electronic appliances (waste electrical and electronic equipment - WEEE). The guideline determines the framework for the return and recycling of used appliances as applicable throughout the EU.



Warning

Redundant appliances:

1. Pull out the mains plug.
2. Cut off the power cord and discard with the mains plug.

Refrigerators contain refrigerants and the insulation contains gases. Refrigerant and gases must be disposed of properly. Ensure that tubing of the refrigerant circuit is not damaged prior to proper disposal.

Safety and warning information

Before you switch ON the appliance

Please read the operating and installation instructions carefully.

They contain important information on how to install, use and maintain the appliance.

Keep all documentation for subsequent use or for the next owner.

Technical safety

- This appliance contains a small quantity of environmentally-friendly but flammable R600a refrigerant. Ensure that the tubing of the refrigerant circuit is not damaged during transportation and installation. Leaking refrigerant may cause eye injuries or ignite.

If damage has occurred

- Keep naked flames and/or ignition sources away from the appliance.
- Thoroughly ventilate the room for several minutes.
- Switch off the appliance and pull out the mains plug or switch off the fuse.
- Notify customer service.

The more refrigerant an appliance contains, the larger the room must be. Leaking refrigerant can form a flammable gas-air mixture in rooms which are too small.

The room must be at least 1 m³ per 8 g of refrigerant. The amount of refrigerant in your appliance is indicated on the rating plate inside the appliance.

- Only customer service may change the power cord and carry out any other repairs. Improper installations and repairs may put the user at considerable risk.

Important information when using the appliance

- Never use electrical appliances inside the appliance (e. g. heaters, electric ice makers, etc.). **Risk of explosion!**
- Never use a steam cleaner to defrost or clean the appliance. The steam may penetrate electrical parts and cause a short-circuit.
Risk of electric shock!
- Do not use pointed or sharp-edged implements to remove frost or layers of ice.
You could damage the refrigerant tubing. Leaking refrigerant may ignite or cause eye injuries.
- Do not store products which contain flammable propellants (e. g. spray cans) or explosive substances in the appliance. **Explosion hazard!**
- Do not stand or support yourself on the base, drawers or doors, etc.
- Before defrosting or cleaning the appliance, switch off the appliance, pull out the mains plug or switch off the fuse.
Pull on the mains plug, not on the power cord.
- Bottles which contain a high percentage of alcohol must be sealed and stored in an upright position.

- Keep plastic parts and the door seal free of oil and grease. Otherwise, parts and door seal will become porous.
- Never cover or block the ventilation openings for the appliance.
- People who have limited physical, sensory or mental abilities or inadequate knowledge must not use this appliance unless they are supervised or given meticulous instructions.

Children in the household

- Keep children away from packaging and its parts. Danger of suffocation from folding cartons and plastic film!
- Do not allow children to play with the appliance!
- If the appliance features a lock, keep the key out of the reach of children.

General requirements

The appliance is suitable

- for refrigerating food.

The appliance is designed for domestic use.

The appliance has been interference-suppressed in compliance with EU Directive 2004/108/EC.

The refrigerant circuit has been tested for leaks.

This product complies with the relevant safety regulations for electrical appliances (EN 60335/2/24).

Installation

Installation location

Install the appliance in a dry, well ventilated room. The appliance should not be installed in direct sunlight or near a heat source such as a cooker, radiator, etc. If installation next to a heat source is unavoidable, use a suitable insulating plate.

Observe the following minimum distances to heat sources:

-
- 30 cm to an oil or solid-fuel cooker.

If installing the appliance next to another refrigerator or freezer, there must be a minimum gap of 2 cm between the appliances in order to prevent condensation.

Installation under a worktop

Fig. 1

Do not install hotplates above the appliance!

Do not remove the worktop frame!

Before installing the appliance under a worktop, purchase a ventilation grille, min. cross-section 160 cm², for a cut-out of approx. 500 x 60 mm, at a DIY store or a specialist outlet.

Place a socket (220–240 V/50 Hz a.c./fuse 10 A or higher) next to the appliance.

- Mark a cut-out for the ventilation grille on the worktop.
 - Centred over the appliance
 - Max. distance to wall 83 mm
 - Note width “B” of the wall connection rail!
- Saw out the cutout. Chamfer the underside by approx. 4 mm.
- Insert and attach the ventilation grille.

Note

The vent is not required when the distance between the worktop and appliance is more than 5 cm.

Aligning the appliance

Fig. 2

Deposit the appliance on the provided site and align it with a spirit level. Adjust the height-adjustable feet with a screwdriver.

Changing over the door hinges

⚠ Warning

While changing over the door hinges, ensure that the appliance is not connected to the power supply. Pull out the mains plug beforehand. Tilt back the appliance (if required, place packaging material, etc. underneath).

The door hinges can be changed over if required by the installation location.

Proceed in numerical sequence. **Fig. 4**

Connecting the appliance

After installing the appliance, wait at least 1 hour until the appliance starts up. During transportation the oil in the compressor may have flowed into the refrigeration system.

Before switching on the appliance for the first time, clean the interior of the appliance (see chapter Cleaning).

The socket should be freely accessible. Connect the appliance only to 220–240 V/50 Hz alternating current via a correctly installed earthed socket. The socket must be fused with a 10 A to 16 A fuse.

If the appliance is to be operated in a non-European country, check on the rating plate whether the indicated voltage and current type correspond to the values of your mains supply. The rating plate is situated in the bottom left-hand side of the appliance. The power cord may be replaced by a technician only.

Warning

Never connect the appliance to electronic energy saver plugs or to power inverters which convert the direct current to 230 V alternating current (e.g. solar equipment, power supplies on ships).

Your new appliance

Please fold out the illustrated last page. These operating instructions refer to several models.

The illustrations may differ.



Fig. 5

1-3 Fascia

4 On/Off switch

5 Light

6 Drawers

7 Vegetable and bottle drawer

8 Door storage compartment

Fascia

Fig. 6

1 Temperature-selection button

For selecting the refrigerator compartment temperature (between +8 °C and +2 °C).

Hold down or keep pressing the button until the required temperature display light (2) flashes.

2 Temperature display lamp

The numbers next to the temperature display lights indicate the refrigerator compartment temperatures in °C.

The light flashes until the selected temperature is reached.

3 “super” cooling button

When the light is on, super cooling has started. Super cooling cools the refrigerator compartment as cold as possible for approx. 8 hours. Then the temperature set before super mode is automatically restored.

Switch on super mode, e.g.:

- before placing large quantities of fresh food in the appliance.
- to cool drinks quickly.

4 Appliance main switch On/Off

Note ambient temperature and ventilation

The climatic class can be found on the rating plate. It specifies the ambient temperatures at which the appliance may be operated. The rating plate is located at the bottom left-hand side inside the fridge.

Climatic category	Permitted ambient temperature
SN	+10 °C to 32 °C
N	+16 °C to 32 °C
ST	+16 °C to 38 °C
T	+16 °C to 43 °C

Ventilation

Fig. 3

The air at the back of the appliance will heat up. This warm air must be allowed to freely escape, otherwise the refrigerating machine must perform more. This raises electricity consumption. Hence, the air-inlet and outlet apertures should never be covered or blocked off!

Switching on the appliance

Fig. 6

Press main switch 4 (red circle disappears).

To do this, open the door – the main switch is located at the bottom left-hand side of the fascia.

Temperature display light +5 °C flashes. The appliance begins to cool.

We recommend a setting of +4 °C.

Perishable food should not be stored warmer than +4 °C.

Operating information

While the refrigerating unit is running, beads of water or hoarfrost form at the back of the refrigerator compartment. This is quite normal. It is not necessary to scrape off the layer of hoarfrost or wipe off the beads of water. The rear panel defrosts automatically. The condensation collects in the drainage channel **Fig. 7** and is conveyed to the refrigerating unit where it evaporates.

Arranging food in the appliance

Note the refrigeration zones in the refrigerator compartment!

The air circulation in the refrigerator compartment produce different refrigerant zones:

- **Warmest zone**
is in the top drawer.
- **Coldest zones**
Are in the third drawer up to the stamped arrow **Fig. 8** and in the refrigerator compartment on the rear panel.

Note: Store perishable food (e.g. fish, sausage, meat) in the coldest zones.

When storing the food, note

that food is well wrapped or covered over. In this way, the aroma, colour and freshness remain. Apart from which, the transfer of taste and dying of plastic parts is avoided.

Warning!

Do not reseal an opened champagne bottle and store in the appliance. When the bottle is taken out of the drawer, the cork may shoot out.

We recommend that you arrange the food inside the refrigerator as follows:

- **In the first and second drawers:**

e.g.: butter, cheese, cakes and pastries, ready meals.

- **In the third drawer:**

e.g. meat, sausage, fish and eggs.

- **In the fourth drawer:**

e.g. large bottles, juice cartons, milk, vegetables, salads and fruit.

Usable capacity

Information on the usable capacity can be found inside your appliance on the rating plate.

Sticker “OK”

not all models

The “OK” temperature monitor can be used to determine temperatures below +4 °C. Gradually reduce the temperature if the sticker does not indicate “OK”.

Note

When the appliance is switched on, it may take 12 hours until the temperature is reached.



Correct setting



Temperature too high, reduce temperature.

Interior fittings

Drawers

Fig. 9

You can remove the drawers. To do this, pull out the drawers, lift and remove.

Drawer with temperature slide

Fig. 10

A colder temperature can be selected for cool drinks or for storing vegetables and fruit which are not sensitive to the cold.

Colder temperature:

Raise the slide a little and move it to the left. The ventilation is open.

Warmer temperature:

Raise the slide a little and move it to the right. The ventilation is closed.

Note: A little frost may occasionally form on the temperature slide. This is quite normal and can be ignored.

Bottle holder and tray

Fig. 11

The bottle holder **Fig. 11/A** prevents bottles from falling over when the drawer is opened and closed. The location of the bottle holder can be changed or repositioned.

To optimise use of the vegetable drawer, place the enclosed tray, **Fig 11/B** at the rear.

Bottle shelf/compartment divider

Fig. 12

Used for storing bottles or as a compartment divider for refrigerated food. The bottle shelf/compartment divider can be moved forwards or backwards.

Door storage compartment

Fig. 13

For storing small tubes and small bottles.

Switching off the appliance

Fig. 6

Press the main switch 4 (red circle becomes visible).

First, open the door – the main switch is situated under the fascia (on the right next to the light).

Temperature display light goes out.
Refrigeration and light have switched off.

Disconnecting the appliance

1. Switching off the appliance.
2. Pull out the mains plug or switch off the fuse.
3. Cleaning the appliance.
4. Leave the appliance door open.

Cleaning the appliance

1. Attention: Pull out the mains plug or switch off the fuse!
2. To clean the appliance, pull out the drawers as far as possible, lift to detach them and remove **Fig. 9**.
When inserting the drawers, place them on the telescopic rails and insert. Place the drawers on the telescopic rails **Fig. 9/A**. Attach the drawers by pressing them down.
3. Wipe the door seal with clear water only and then wipe dry thoroughly.
4. Clean the appliance with lukewarm water and a little washing-up liquid. The rinsing water must not drip onto the fascia or light **Fig. 6**.
5. After cleaning: reconnect and switch on the appliance.

Note:

The temperature slide can be removed for cleaning **Fig. 15**.

Do not use abrasive or acidic cleaning agents and solvents.

Regularly clean the condensation channel and drainage hole, **Fig. 7**, so that the condensation can flow out. Clean the condensation channel with cotton buds, etc.

The rinsing water must not run through the drain hole into the evaporation pan.

Attention!

Never clean the shelves or containers in the dishwasher. The parts may warp!

Important care information for stainless steel appliances

Use “Chromol” cleaning agent for cleaning stainless steel surfaces.

This cleaning agent is available on the market under the name “Chromol” or from your customer service under

ident-no. 310359 as a 500 ml spray can or under

ident-no. 166787 as a 50 ml trial can.

To prevent damage to the surfaces, under no circumstances use abrasive sponges, metal brushes, sharp-edged implements or scouring agents. Chemically aggressive cleaning agents, such as defrosting sprays, oven sprays, solvents or stain removers must not be used either.

The stainless steel surface should be cleaned in the direction of the grain.

Tips for saving energy

- Install the appliance in a dry, well ventilated room, but not in direct sunlight and not near a heat source (e.g. radiator, cooker, etc.). If required, use an insulating plate.
- Allow warm food and drinks to cool down before placing in the appliance!
- When thawing frozen products, place them in the refrigerator. The low temperature of the frozen products cools the food in the refrigerator.
- Open and close the door as briefly as possible.

Operating noises

Normal noises

Humming – refrigerating unit is running.

Bubbling, gurgling or whirring noises – refrigerant is flowing through the tubing.

Clicking – motor is switching on or off.

Preventing noises

The appliance is not level

Please align the appliance with a spirit level. Use the height-adjustable feet or place something under the feet.

The appliance is not free-standing

Please move the appliance away from adjacent units or appliances.

Drawers or storage areas wobble or stick

Please check the removable parts and, if required, reinsert them.

Bottles or receptacles are touching each other

Please move bottles or receptacles away from each other.

Eliminating minor faults yourself

Before you call customer service:

Please check whether you can eliminate the fault yourself based on the following information.

Customer service will charge you for advice, even if the appliance is still under guarantee!

Fault	Possible cause	Remedial action
Temperature differs greatly from the set value.		<p>In some cases it is adequate to switch off the appliance for 5 minutes.</p> <p>If the temperature is too high wait a few hours and check whether the temperature has approached the set value.</p> <p>If the temperature is too low check the temperature again the next day.</p>
Interior light does not function; the refrigerating unit is running.	The bulb is defective.	<p>Change the bulb</p> <ol style="list-style-type: none">1. Pull out the mains plug or switch off the fuse.2. Change the bulb Fig. 14/A (replacement bulb, 220–240 V a.c., E14 lampholder, see defective bulb for wattage).
	The light switch is jamming. Fig. 14/B	Check whether it can be moved.
Floor of the refrigerator compartment is wet.	The condensation outlet is blocked. Fig. 9	Clean the condensation channel and outlet Fig. 9 , (see Cleaning the appliance).
The temperature in the refrigerator compartment is too cold.	Temperature has been set too low.	Increase the temperature.
	If large quantities of fresh food are being frozen, the temperature in the refrigerator compartment drops temporarily, as the refrigerating unit runs for a long time.	Do not exceed max. freezing capacity.

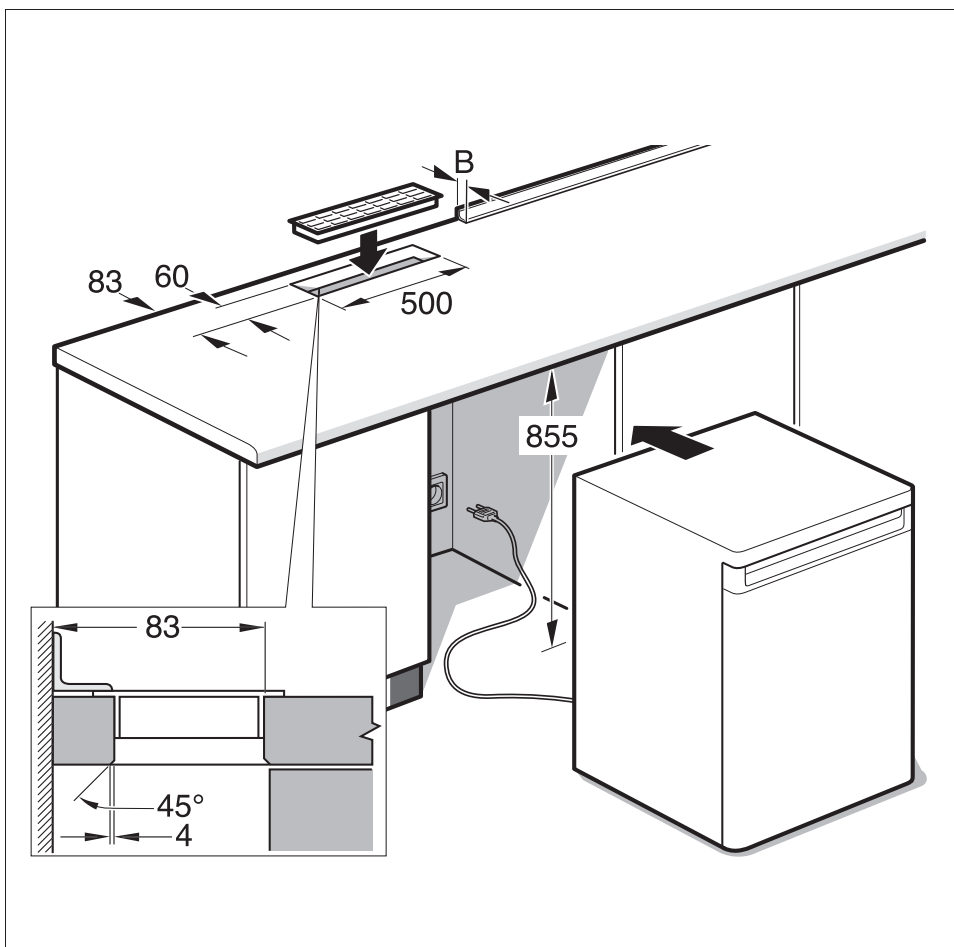
Fault	Possible cause	Remedial action
The refrigerating unit is switching on more frequently and for longer.	Large quantities of fresh food are being frozen.	Do not exceed max. freezing capacity.
	The ventilation openings have been covered.	Remove obstacles.
Refrigerator has no cooling capacity.	On/Off button has not been switched on.	Press the On/Off button.
	Power failure; the fuse has been switched off; the mains plug has not been inserted properly.	Check whether the power is on, check the fuses.

Customer service

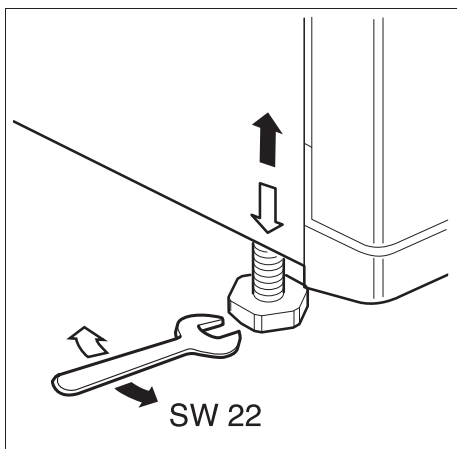
Please check your telephone book or the customer-service list for your nearest customer-service facility. When contacting customer service, please ALWAYS quote the product number (E-number) and production number (FD-number) of your appliance.

These numbers can be found on the rating plate. **Fig. 16**

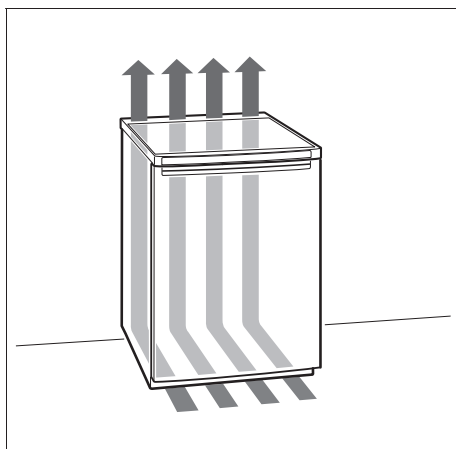
To prevent unnecessary call-outs, please assist customer service by quoting the product and production numbers. This will save you additional costs.



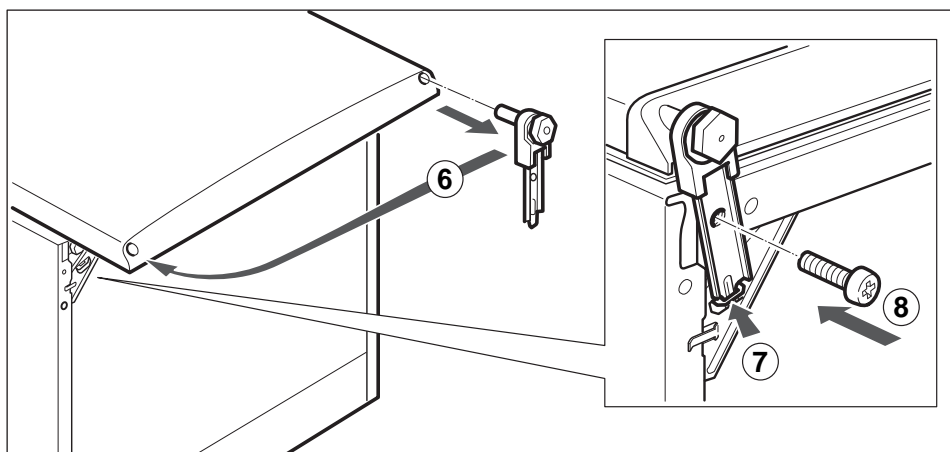
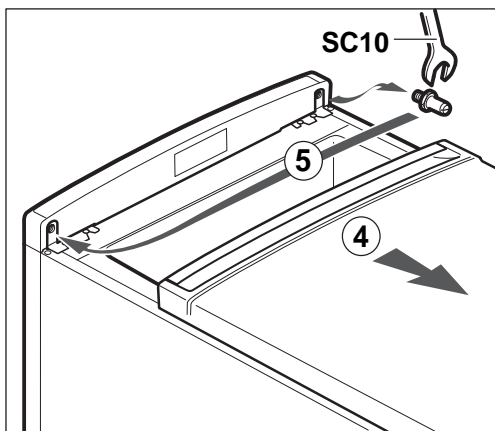
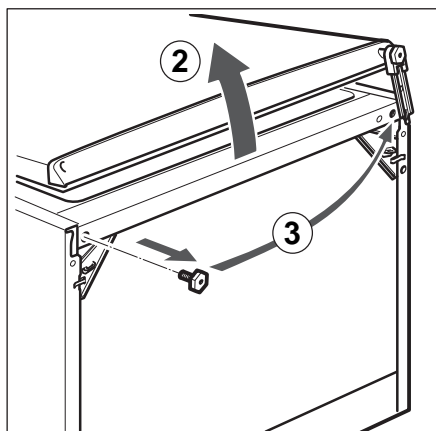
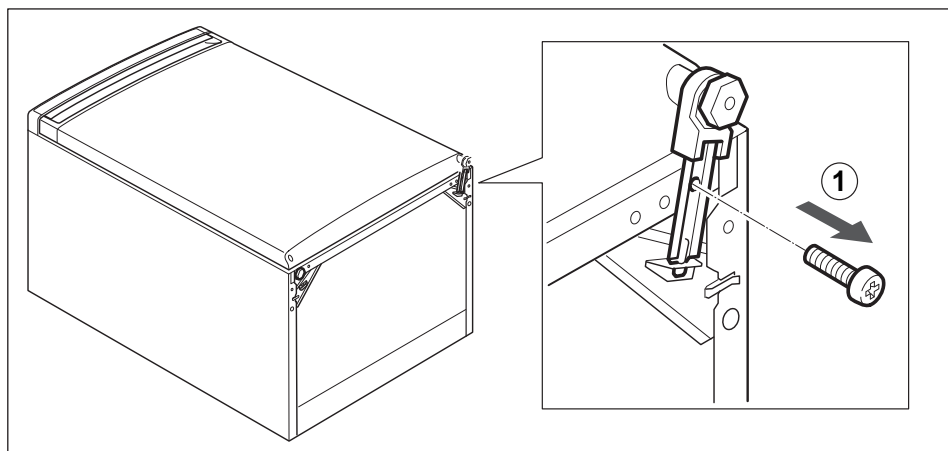
1

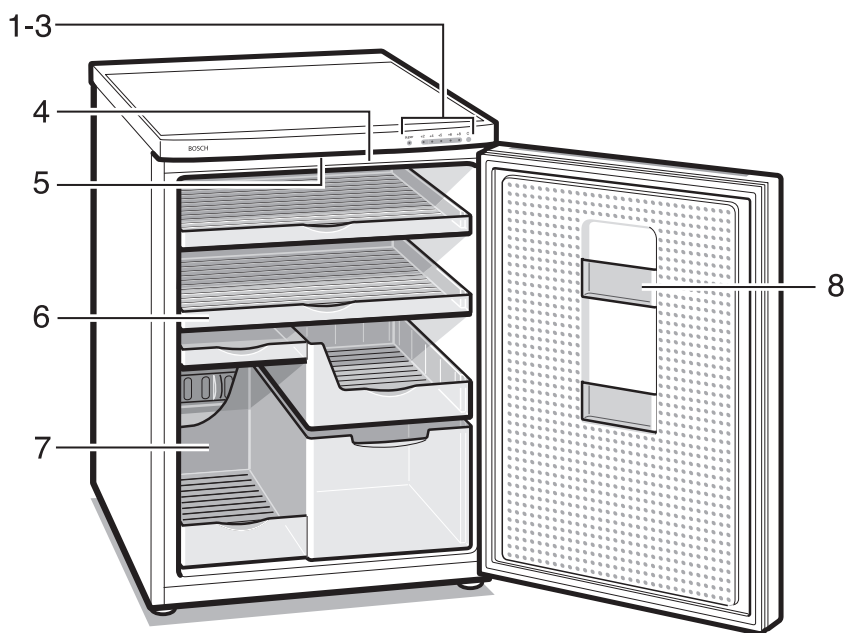


2

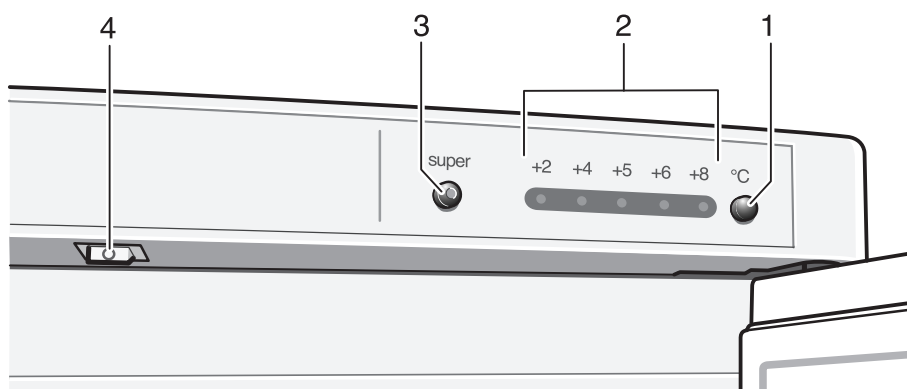


3

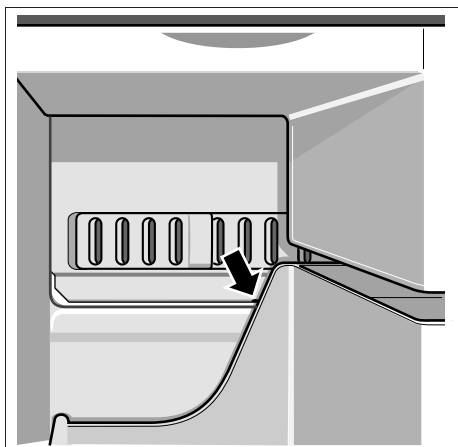




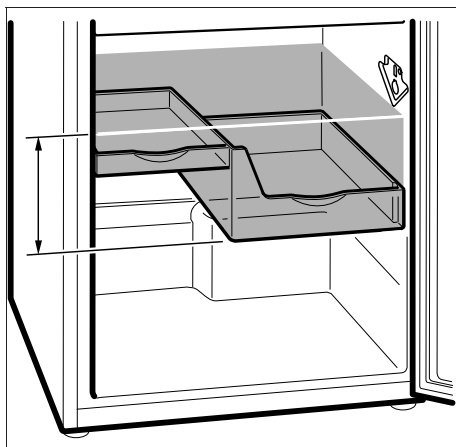
5



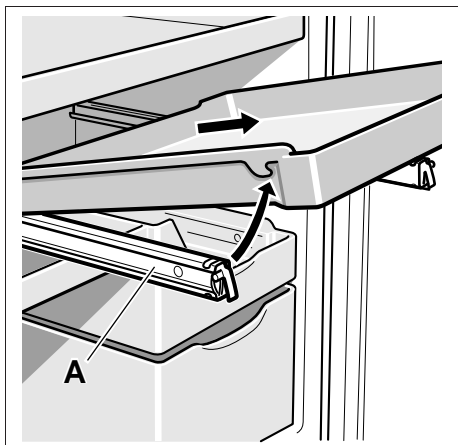
6



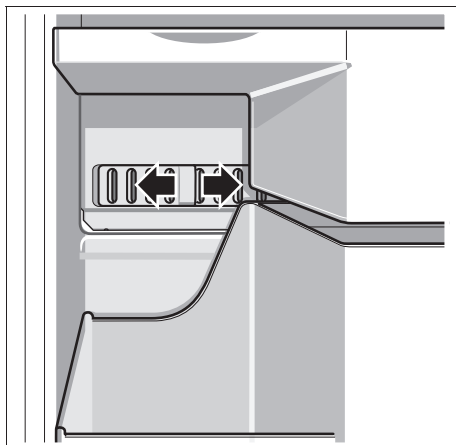
7



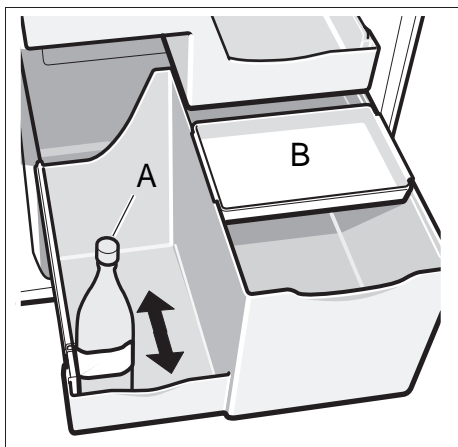
8



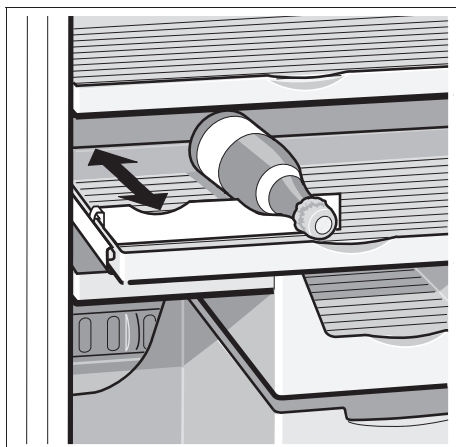
9



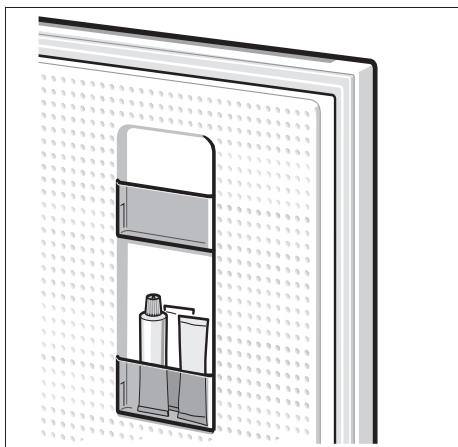
10



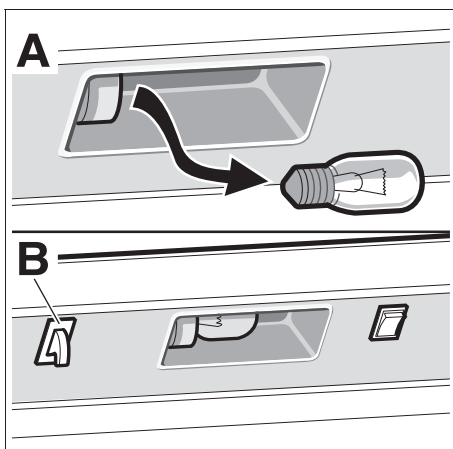
11



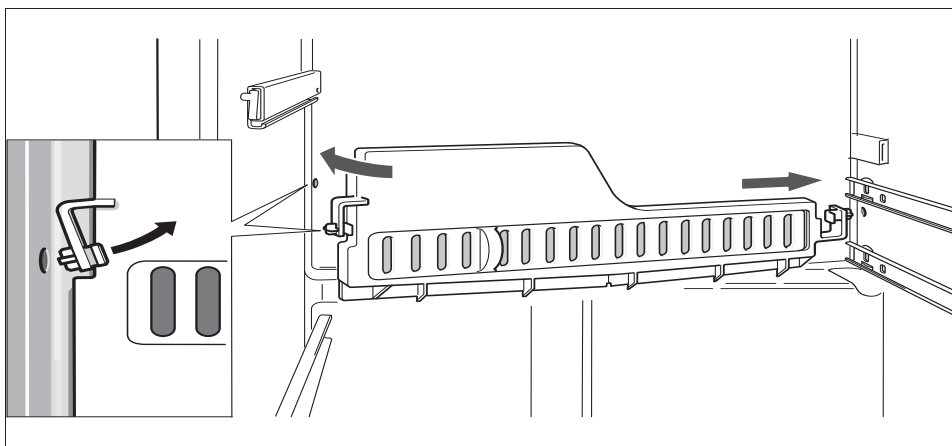
12



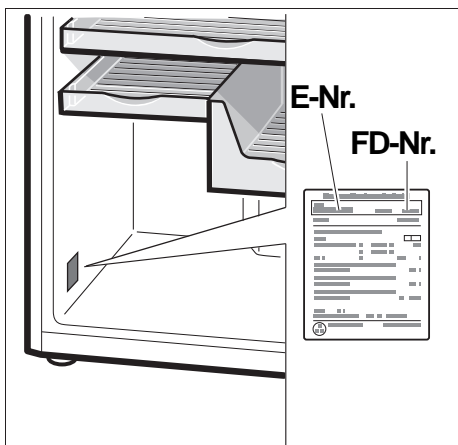
13



14



15



16

Bosch Infoteam (Mo-Fr: 8.00-18.00 Uhr erreichbar)

Für Produktinformationen sowie Anwendungs- und Bedienungsfragen:

Tel.: **01805 304050*** oder unter **bosch-infoteam@bshg.com**

*) 0,14 EUR/Min aus dem Festnetz der T-Com, Mobil ggfs. abweichend.

Nur für Deutschland gültig!

Subject to alterations.

