



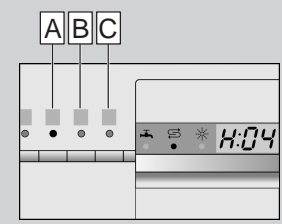
Brief and handy: everything your dishwasher needs ...
Before using for the first time, read the operating instructions!

1

Adjusting the water softening system *

Ask your water supply company what the **water hardness** is and enter...

| Water hardness value °Clarke | Hardness range | mmol/l | Set value on the machine |
|------------------------------|----------------|---------|--------------------------|
| 0-8 | soft | 0-1.1 | H:00 |
| 9-10 | soft | 1.2-1.4 | H:01 |
| 11-12 | medium | 1.5-1.8 | H:02 |
| 13-15 | medium | 1.9-2.1 | H:03 |
| 16-20 | medium | 2.2-2.9 | H:04 |
| 21-26 | hard | 3.0-3.7 | H:05 |
| 27-38 | hard | 3.8-5.4 | H:06 |
| 39-62 | hard | 5.5-8.9 | H:07 |

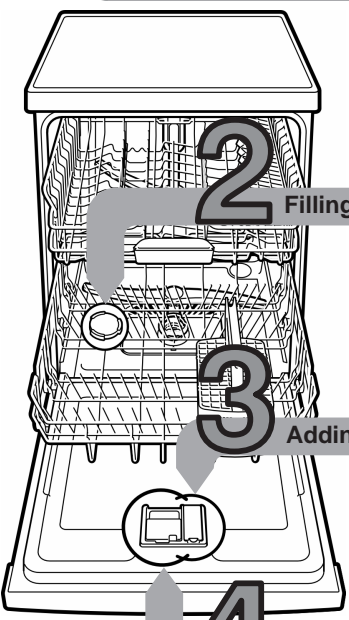


Quickly sorted ...
How to adjust the water softening system

- Switch on ON/OFF switch
- Hold down programme button **A** and press START button until **H:0...** is indicated on the digital display.
- Release both buttons.
The LED for button **A** flashes and the factory set value of **H:04** is indicated on the digital display
- Press programme button **C**.
Each time the button is pressed the set value increases by one setting; when the value reaches **H:07**, the display jumps back to **H:00** (off).
- Press START button. The chosen setting has now been stored.



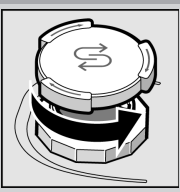
* only before the first wash or if the water hardness has been changed



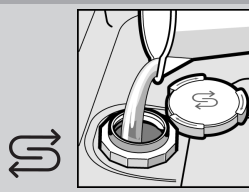
2

Filling the salt dispenser

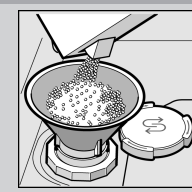
Dissolves limescale (not necessary for set value 0 !) ...



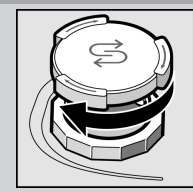
Unscrew cover.



Fill the salt dispenser with water before the first wash only.



Add salt (never add detergent!).

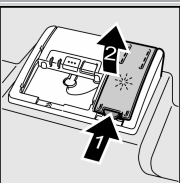


Screw on the cover. Wash immediately.

3

Adding rinse aid

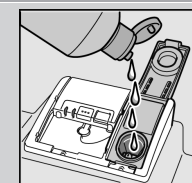
Spick and span ...



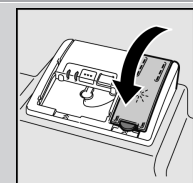
Press mark 1, lift up cover 2.



Refill if rinse-aid refill indicator is lit!



Adding rinse aid.

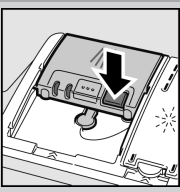


Screw on the cover. CLICK!

4

Adding detergent

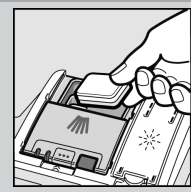
A lot of dirt, a lot of detergent ...



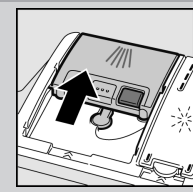
If required, open the cover (press button).



Attention
 Combination products are not suitable for all programmes, follow manufacturer's instructions.



Adding detergent.



Slide cover shut, press. PLOP!

5

Switching on the appliance

6

Select programme

Quick, economical or intensive ...

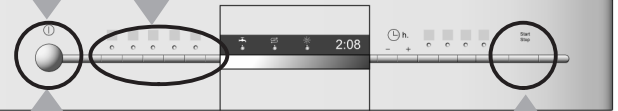
Overview of programmes

The max. possible number of programmes is illustrated in this overview. The corresponding programmes for your appliance can be found on the fascia.

The programme data has been measured in the laboratory according to European standard EN 50242.

Deviations are possible in practice.
 * half normal load

| | Intensive 70° | Auto 45°/65° auto | Eco 50°/eco | Gentle 40° | Quick 45° | Prerinse |
|-----------------------------|---------------|-------------------|-------------|------------|-----------|----------|
| Duration: hs/mins | 2:15 | 1:35-2:30 | 2:20 | 1:10 | 0:29* | 0:15 |
| Energy Consumption: kWh | 1,50 | 1,00-1,60 | 1,05 | 0,80 | 0,80 | 0,05 |
| Water consumption in litres | 15 | – | 12 | 13 | 10 | 4 |
| With Aquasensor | 12 | 9-19 | – | 10 | – | – |



9

Switch off the appliance Everything o.k...

8

Start programme Here we go...

7

Additional options **

Express Wash (VarioSpeed)
 ... is obtained by increased energy consumption at a constant cleaning and drying performance.

Half load
 ... for a few items, saves water, energy and time

IntensiveZone
 ... perfect for a mixed load. Washing pressure and washing temperature are increased slightly.

Hygiene
 ... The temperature is increased during the rinsing process. This increases the hygiene status.

Extra drying
 ... improves the drying result by increased temperature in the final rinse (Please take care with delicate dishes)

** depending on model

Maintenance and care

For perfect rinsing results ...

Cleaning waste water pump

Filters ...
check, if required clean

Rotate filter cylinder, remove filter system ...

rinse under running water ...

insert ...

Screw on filter system **NOTE MARK!**

- Pull out the mains plug
- Remove filters and scoop out water
- Lever off cover (→A)
- Check area around the fan impeller for foreign objects
- Click cover shut (→B)
- Insert filters

Spray arms ...
Remove blockages/deposits

pull lower arm upwards ...

unscrew upper arm ...

clean spray nozzles under running water (if required use toothpicks) ...

insert lower arm ...

Rectifying minor faults yourself ...

... as it is worth doing it yourself!

| Fault | Possible causes | Remedial action |
|-----------------------------------|--|--|
| Display "E:24" and "E:25" is lit | Supply fitting jammed or calcified | <ul style="list-style-type: none"> ▶ Open supply fitting. ▶ 1. Unscrew water connection. ▶ 2. Clean filter in the water connection. ▶ 3. Flow rate must be min. 10 l/min. when water supply is open. If the flow rate is less, replace the supply fitting. ▶ Install supply hose without kinks. |
| Display "E:24" and "E:25" is lit | Waste water hose is blocked or kinked | ▶ Install waste water hose without kinks. |
| Display "E:25" and "E:25" is lit | Cover not attached to waste water pump | ▶ Attach cover (see above). |
| Display "E:25" and "E:25" is lit | Waste water pump blocked | ▶ Clean waste-water pump (see above). |
| Other fault display "E:XX" is lit | Appliance has technical defect is lit | <ul style="list-style-type: none"> ▶ Call factory customer service (state fault display). ▶ Unplug appliance. |
| Residual water in the appliance | The programme has not yet ended | ▶ Close and switch on the appliance or terminate the programme (see Terminating the programme). |
| Rust on the cutlery | Cutlery not rust-resistant. Hard knife blades are more susceptible | ▶ Use dishwasher-proof cutlery. |
| | Extraneous rust | ▶ Never wash rusting parts in the appliance. |

| Fault | Possible causes | Remedial action |
|--|---|---|
| Utensils are not clean | Utensils are situated close together or one above the other | ▶ Separate the utensils, prevent contact points. |
| Sand or gritty residue on the utensils | Too little detergent | ▶ Follow manufacturer's instructions (detergent). |
| | Unsuitable programme selected | ▶ Select a more intensive programme. |
| | Spray arm nozzles blocked | ▶ Clean the spray arms (see above). |
| | Filters dirty, not seated firmly | ▶ Clean the filters (see above). |
| | Spray arms blocked | ▶ Arrange the utensils so that the spray arms can rotate freely. |
| Stains and streaks | Rinse-aid dosage too high/too low | ▶ Streaks: reduce dosage. |
| | | ▶ Water or limescale stains: increase dosage. |
| Milky deposits on the utensils (can be removed) | Water softening system incorrectly set; | ▶ Correctly set water softening system. |
| | No salt | ▶ Refill with salt. |
| Milky deposits, glasses cloudy/tarnished (cannot be removed) | Glasses not dishwasher-proof. | ▶ Use dishwasher-proof glasses. |
| | | ▶ Use a detergent suitable for glasses. |
| Plastic/utensils discoloured | Too little detergent. | ▶ Follow manufacturer's instructions (detergent). |
| | Discoloration caused by food colourings (tomato sauce) | ▶ Discoloration is harmless; subsequent rinse cycles will cause it to fade. |

More information can be found in the operating instructions

Terminating the programme ...

Loading the dishwasher correctly ...

While the programme is running, press the START button for approx. 3 sec. (Reset).



The numerical display indicates "0:01" approx. 1 minute after the programme ends, 0:00 is indicated



Switching off the appliance

Dishwasher-proof utensils (not soiled with ash, wax, lubricating grease, ink or adhesive labels; remove large remnants of jam, milk products and food according to the operating instructions and check that the spray arms can rotate freely.