

Your washing machine

Congratulations – You have opted for a modern, high-quality domestic appliance manufactured by Siemens. The washing machine is distinguished by its economical energy consumption.

Each appliance which leaves our factory is inspected thoroughly to ensure that it functions properly and is in perfect condition.

For further information go to our web site:
<http://www.siemens.de/hausgeraete>

Environmental disposal

Dispose of packaging in an environmentally friendly manner. This appliance has been identified in accordance with the European Directive 2002/96/EG on Waste Electrical and Electronic Equipment (WEEE). The Directive specifies the framework for an EU-wide valid return and recycling of waste appliances.



Contents

	Page
■ Intended use	1
■ Programmes	1
■ Selecting and adjusting a programme	3
■ Washing	3/4
■ After washing	4
■ Individual settings	5/6
■ Important information	6
■ Overview of programmes	7
■ Safety instructions	8
■ Consumption values	8
■ Care	9
■ Information on the display panel	9
■ Maintenance	10
■ What to do if ...	11

Protection of the environment/ conservation tips

- Utilise the maximum amount of washing for the particular programme.
- Wash normally soiled washing without prewash.
- Instead of the **Cottons/Coloureds 90 °C** programme, select **Coloureds eco 60 °C** and **Intensive Wash** additional function. Comparable cleaning result with significantly lower energy consumption.
- Meter detergent according to the manufacturer's instructions and water hardness.
- If the washing is then dried in the tumble dryer, select spin speed according to the instructions of the dryer manufacturer.

Intended use

- for use in the household only,
- for the washing of machine-washable textiles in a detergent solution,
- to be operated with cold drinking water and commercially available detergents and care products which are suitable for use in washing machines.

- ⚠ – Do not leave children unattended near the washing machine!
- ⚠ – The appliance is not intended for use by young children or infirm persons without supervision.
- ⚠ – Keep pets away from the washing machine!

Programmes

For detailed overview of programmes see → Page 7. Temperature and spin speed can be selected individually irrespective of the selected programme and programme

Cottons/Coloureds	hard-wearing textiles
Stains	hard-wearing textiles
Coloureds eco	easy-care textiles
Easy-Care	easy-care textiles
Delicates/Silk	delicate washable textiles
Mixed Fabrics	different types of washing
Rinse	with subsequent spin cycle
Spin	washing washed by hand
Empty	the rinsing water if ⓪ occurs
Wool	hand/machine washable textiles
Easy-Care Dark	dark textiles
PowerWash 60'	hard-wearing textiles
Rapid 15'	Short programme
Outdoor Wear	weather, sport and outdoor textiles → Page 6
Shirts/Business	non-iron shirts

Preparation

Before using your washing machine for the first time wash once without any washing → Page 9.

⚠ Correct installation according to separate installation instructions!

Checking the machine

⚠ Never switch on a damaged machine! Inform your customer service!

Insert mains plug

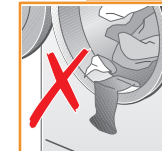
⚠ With dry hands only! Take hold of the plug only!

Turn on the tap

Dispenser II: detergent for main wash, softener, bleaching agent, stain remover
Dispenser Ⓢ: fabric softener, starch
Dispenser I: detergent for prewash

Sorting and inserting the washing

Follow manufacturer's care information! According to the information on the care labels. According to type; colour; soiling and temperature. Do not exceed maximum load → Page 7.



Follow important instructions! → Page 6!
Turn off the tap. Do not jam items of washing between the washing machine door and rubber seal.

Add detergent and care product

Meter accordingly: Washing amount, soiling, water hardness (ask your water supply company) and manufacturer's instructions. Pour liquid detergent into the appropriate dispenser and place in the drum.

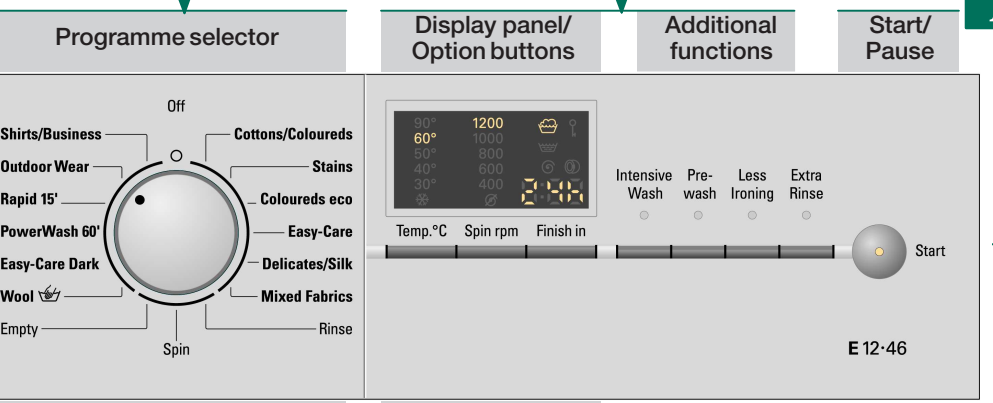
i Dilute viscous fabric softener and fabric conditioner with water. Prevents blockage of the overflow.

Selecting** and adjusting a programme

i ** If the symbol ↔ flashes on the display panel, childproof lock active → Deactivate, Page 5.
Additional functions and option buttons → Individual settings, Page 5.

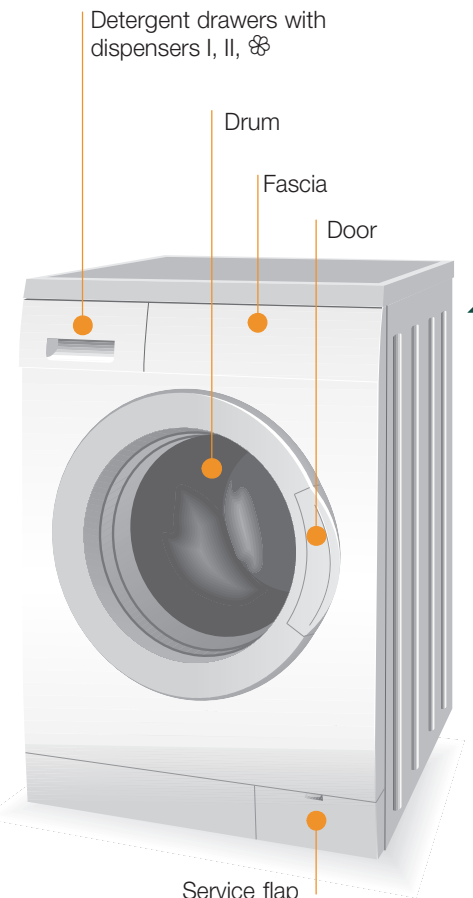
Select Start (Start/Pause)

i All buttons are sensitive, they only need to be touched gently! If the Option buttons are touched for longer, the selected options will run automatically!



i Programme selector for switching the machine on and off and for selecting the programme. Can be rotated in either direction.	⊛ – 90 °C Select the temperature (⊛ = cold)
	⓪ – 1200* ⓪ Select the spin speed (* depending on model) or ⓪ (without final spin)
	1 – 24h ⓪ Programme ends in ...
Status displays	Programme progress displays:
Ⓢ	Washing, Rinse, Spin, programme duration or end (-0-)
?	Childproof lock → Page 5.
⓪	Open door, top up washing → Pages 4, 5.

Washing



Removing the washing

Open washing machine door and remove washing. If ⓪ (Rinse stop = without final spin) active: Set programme selector to **Empty** or select spin speed. Select **Start (Start/Pause)**.

Remove any foreign objects – risk of rusting.

Turn off tap

Not required for Aqua-Stop models → Installation instructions..

Switch off

Set programme selector to **Off**.

End of programme when ...

... **Start (Start/Pause)** flashes and -0- is indicated on the display panel.

Terminating the programme

Programmes with high temperature, first:
– Cool washing: Select **Rinse**. Washing machine door remains locked.
– Select **Off**.
– Select **Spin** or **Empty**.
– Select **Start (Start/Pause)**.

Change programme if ...

... you have mistakenly selected a wrong programme:
– Reselect programme.
– Select **Start (Start/Pause)**. The new programme starts from the beginning.

Top up washing if ... → Page 5

... **Start (Start/Pause)** selected and then **YES + ⓪** are lit on the display panel. If **NO**, the door cannot be opened.
– Select **Start (Start/Pause)**.

Washing

Individual settings

Option buttons

You can change the spin speed and temperature beforehand and while the selected programme is running. Effects dependent on the programme progress.

Temp. °C (Temperature)

You can change the indicated washing temperature. The maximum washing temperature which can be selected depends on the set programme.

Spin rpm (Revolutions per minute)

You can change the indicated spin speed. The maximum spin speed which can be selected depends on the set programme.

Finish in (Ready in)

The respective programme duration is displayed by selecting the programme. The programme start can be delayed before the programme begins. The **Finish in (Ready in)**-time can be set in hour-steps up to maximum 24h. Keep pressing the **Finish in (Ready in)** button until the required number of hours is indicated (h=hour). Select **Start (Start/Pause)**.

Additional functions → see also Overview of programmes, Page 7

Intensive Wash	Extend the washing time for a more intensive washing of heavily soiled washing or for washing at maximum load → Overview of programmes, Page 7.
Prewash	For heavily soiled, hard-wearing washing, e.g. made of cotton or linen. Prewash at 30 °C.
Less Ironing	Special spin sequence with subsequent fluffing. Gentle final spin – residual moisture in the washing increased slightly.
Extra Rinse	Additional rinse cycle. For areas with very soft water or for further improvement of the rinsing result.

Childproof lock and top up

⚠ Childproof lock/appliance lockout
Secure the washing machine to prevent the set functions from being unintentionally changed.
ON/OFF: After the programme starts/ends press **Start (Start/Pause)** for approx. 5 seconds.
Note: Childproof lock may remain activated until the next programme starts, even after the machine has been switched off! Then deactivate the childproof lock before the programme starts and, if required, re-activate after the programme starts.

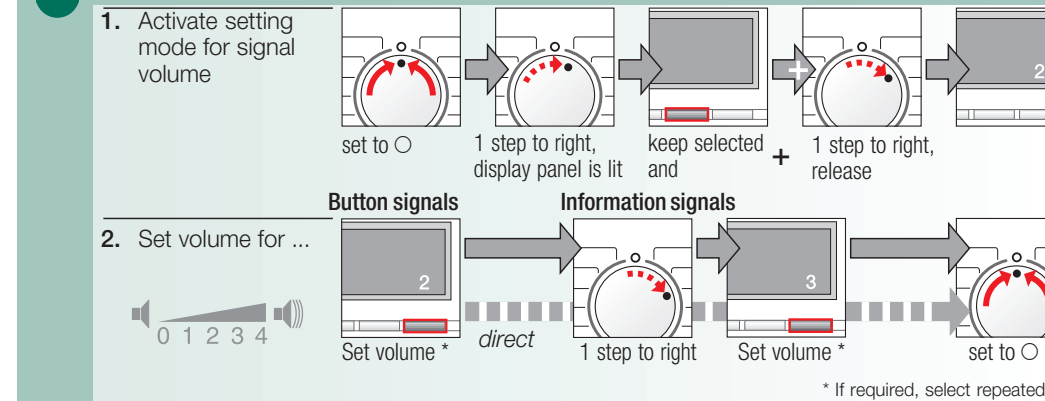
YES + ⓪
Topping up washing
Select **Start (Start/Pause)** button if you want to add more items of washing after the programme starts. The machine checks whether a top-up is possible.
YES + ⓪ are lit: Top up possible.
YES flashes: Spin speed too high, wait until **YES + ⓪** are lit.
NO: Top up not possible.
Note: At a high water level and/or temperature or during the spin cycle the door remains locked for reasons of safety.
To continue the programme, select the **Start (Start/Pause)** button.

Start (Start/Pause)

To start the programme or top up washing and to activate/deactivate the childproof lock.

Individual settings

Signal



Important information

Protecting the washing and the machine

- Empty pockets.
- Remove metal parts (paper clips, etc.).
- Wash delicates in the net/bag (tights, curtains, underwired bras).
- Close zips, button up covers.
- Brush sand out of pockets and collars.
- Remove curtain fittings or include in the net/bag.

Washing with different degrees of soiling

Light	Wash new items separately.
	Do not prewash.
	If required, pretreat stains. Select Intensive Wash additional function.
Heavy	Load less washing. Select Intensive Wash additional function, if necessary.

Soaking

Load washing of the same colour.
Pour soaking agent/detergent into dispenser II according to the manufacturer's instructions. Set programme selector to **Cottons/Coloureds 30 °C** and select **Start (Start/Pause)**. After approx. 10 minutes select **Start (Start/Pause)**. After the required soaking time reselect **Start (Start/Pause)** if the programme is to be continued or change the programme.

Starching


Washing should not be treated with fabric softener. Liquid starch can be used in all wash programmes. Pour starch into the fabric softener dispenser according to manufacturer's specifications Ⓢ (if required clean beforehand).

Dyeing/Bleaching

Dye in household quantities only. Salt may attack stainless steel! Observe specifications of the dye manufacturer! Do **not** bleach washing in the washing machine.

Outdoor

Do not use fabric softener!
Special detergents suitable for machine wash available in particular from sports shops. Pour detergent into dispenser **II** according to manufacturer's specifications. Set programme selector to **Outdoor Wear**. Select temperature and **Start (Start/Pause)**.

Programmes	°C	max.	Type of washing	Additional functions; information
Cottons/Coloureds	90 °C	7 kg*	Hardwearing textiles, heat-resistant textiles made of cotton or linen	Intensive Wash, Prewash, Less Ironing, Extra Rinse
Stains	60 °C			
Coloureds eco	60 °C			time-controlled programme, short programme for normally soiled washing
PowerWash 60°	60 °C	4 kg	Hardwearing textiles made of cotton or blended fabrics	Intensive Wash, Prewash, Less Ironing, Extra Rinse
Easy-Care	60 °C		Easy-care textiles made of cotton, linen, synthetic fibres or blended fabrics	Intensive Wash, Prewash, Less Ironing, Extra Rinse
Mixed Fabrics	40 °C	3 kg*	Textiles made of cotton and easy-care textiles	Intensive Wash, Prewash, Less Ironing, Extra Rinse; different types of washing can be washed together
Easy-Care Dark	40 °C		Dark textiles made of cotton and dark easy-care textiles	Intensive Wash, Prewash, Less Ironing, Extra Rinse; reduced rinse and final spin cycle
Delicates/Silk	30 °C		For delicate, washable textiles, e.g. made of silk, satin, synthetic fibres or blended fabrics (e.g. curtains)	Intensive Wash, Prewash, Less Ironing, Extra Rinse; no spin cycle between the rinse cycles
Wool 	40 °C		Hand or machine-washable wool or rich-wool textiles	especially gentle wash programme to prevent shrinkage, longer programme pauses (textiles rest in wash liquor)
Rapid 15°	40 °C	2 kg	Easy-care textiles made of cotton, linen, synthetic fibres or blended fabrics	Short programme approx. 15 minutes, suitable for lightly soiled washing
Outdoor Wear	40 °C		Weather, sport and outdoor textiles also with climate protection membrane	Intensive Wash, Less Ironing, Extra Rinse; reduced final spin at intervals
Shirts/Business	60 °C		Non-iron shirts made of cotton, linen, synthetics fibres or blended fabric	Intensive Wash, Prewash, Less Ironing, Extra Rinse; short spin only, hang up dripping wet
Additional programmes				
i The programmes are time-controlled for lightly soiled textiles. If textiles are heavily soiled select additional function Intensive Wash .				
* When washing at maximum load, always select Intensive Wash additional function. Irrespective of type of washing, Easy-Care 40 °C at max. spin speed is optimally suitable as Short programme . Programmes without prewash – pour detergent into dispenser II, programmes with prewash – divide detergent between dispensers I and II.				

Siemens-Elektrogeräte GmbH
Carl-Wery-Str. 34
81739 München / Germany


WM12E46SGB / ...

8807
9000 382 239

Safety instructions

- Read and follow the operating and installation instructions and all other information enclosed with the washing machine.
- Retain documents for subsequent use.
- Risk of electric shock**
 - Never pull out the mains plug by tugging the power cord!
 - Never insert/pull out the mains plug with damp hands.
- Danger to life**
 - On redundant appliances:
 - Pull out the mains plug!
 - Sever the power cord and discard together with the plug.
 - Destroy the lock on the washing-machine door.
 - This will prevent children from locking themselves in and suffocating.
- Risk of suffocation**
 - Keep packaging, plastic film and packaging parts out of the reach of children.
- Risk of poisoning**
- Risk of explosion**
 - Caused by detergents containing solvents, e.g. stain remover/items of washing pretreated with solvent naphtha may result in an explosion after being loaded into the washing machine.
 - Before hand thoroughly rinse items of washing by hand.
- Risk of injury**
 - Washing machine door may become very hot.
 - Caution when draining hot detergent solution.
 - Do not climb on the washing machine.
 - Do not lean on the open washing machine door.
 - Do not reach into the drum in case it is still rotating.
 - Caution when opening the detergent drawer while the appliance is running!

Consumption values

Programme	Additional function	Load	Current**	Water**	Programme duration**
Cottons/Coloureds 40 °C*	Intensive Wash	7 kg	0.65 kWh	60 l	2:30 h
Coloureds eco 60 °C*	Intensive Wash	7 kg	1.05 kWh	47 l	2:58 h
Cottons/Coloureds 90 °C	Intensive Wash	7 kg	2.00 kWh	75 l	2:33 h
Easy-Care 40 °C*	Intensive Wash	3 kg	0.55 kWh	50 l	1:24 h
Easy-Care 40 °C* (also suitable as Short programme)	–	3 kg	0.54 kWh	40 l	0:55 h
Mixed Fabrics 30 °C	–	3 kg	0.32 kWh	35 l	0:44 h
Delicates/Silk 30 °C	–	2 kg	0.25 kWh	38 l	0:32 h
Wool  30 °C*	–	2 kg	0.15 kWh	34 l	0:40 h

* Programme setting for test according to currently valid European standard 60456. Information about comparability tests: The test programmes test at: maximum load, **Intensive Wash** additional function, maximum spin speed. Select the **Easy-Care 40 °C** programme without **Intensive Wash** additional function and at maximum spin speed as **Short programme** for coloureds wash.

** The values deviate from the indicated values depending on water pressure, water hardness, water inlet temperature, room temperature, type and amount of washing and degree of soiling, utilised detergent, fluctuations in the mains voltage and selected additional functions.

Care

- Before using your washing machine for the first time**
 - Do not put any washing in the washing machine! Turn on the tap, fill the appliance with approx. 1 litre of water and then pour ½ measuring cup of detergent into dispenser II. Set programme selector to **Easy-Care 60 °C** and select **Start (Start/Pause)**. At the end of the programme set the programme selector to **Off**.
- Machine housing, control panel**
 - Wipe with a soft, damp cloth.
 - Do not use abrasive cloths, sponges or detergents (stainless steel cleaner).
 - Immediately remove washing and cleaning agent residue.
 - Do not clean the appliance with a water jet.
- Clean the detergent drawer ...**
 - ... if it contains detergent or fabric softener residue.
 - 1. Pull out, depress insert, take out drawer all the way. Take out insert: using your finger, press insert upwards.
 - 2. Clean detergent dispenser and insert with water and a brush and dry.
 - 3. Attach insert and lock into position (push cylinder onto guide pin).
 - 4. Insert detergent drawer.
- Drum**
 - Leave washing machine door open so that the drum can dry out.
 - Rust stains – use chlorine-free cleaning agent, not steel wool.
- Descaling** No washing in the machine!
 - Descale according to the instructions of the descaling agent-manufacturer, not required for correct detergent dosage.
- Emergency release, e.g. if power failure occurs**
 - The programme continues running when the power is restored. If the washing is still to be removed, the door can be opened as described below:
 - Risk of scalding!** Wash liquor and washing may be hot. If required, leave to cool down. Do not reach into the drum in case it is still rotating. Do not open the door if you can still see water through the glass.
 - 1. Select programme selector to **Off**, pull out the mains plug.
 - 2. Drain detergent solution –> Page 10.
 - 3. Pull down emergency release with a tool and release. Door can then be opened.


Information on display panel

F:16	Close the washing machine door properly; washing may be caught.
F:17	Turn on the tap all the way, supply hose kinked/jammed; clean filter –> Page 10, water pressure too low.
F:18	Filter blocked; clean detergent solution pump –> Page 10. Outlet pipe/drainage hose blocked; clean detergent solution pump –> Page 10.
F:21	Motor fault. Call customer service!
F:23	Water in the base pan, appliance leaking. Call customer service!

Maintenance

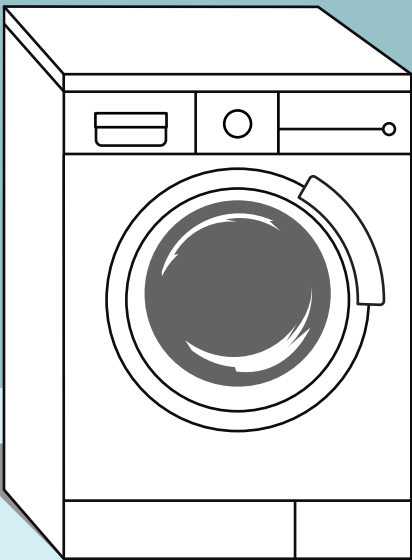
- Detergent solution pump**
 - Set programme selector to **Off**, pull out the mains plug.
 - 1. Open and remove service flap.
 - For models with drainage hose:
 - Take drainage hose out of the holder and pull out of the housing. Place a container on the floor.
 - Remove sealing cap, allow detergent solution to flow out. Press on sealing cap and insert drainage hose into the holder.
 - For models without drainage hose:
 - 2* Carefully unscrew pump cover until the detergent solution begins to run out. When the service flap is half full, screw back the pump cover and empty the service flap. Repeat steps until all the detergent solution has run out.
 - 3. Carefully unscrew the pump cover (residual water).
 - 4. Clean the interior, pump cover thread and pump housing (fan impeller in the detergent solution pump must rotate).
 - 5. Reinsert and screw on pump cover.
 - 6. Insert and close service flap.
 - To prevent unused detergent from flowing into the outlet during the next wash: Pour 1 litre of water into dispenser II and start the **Empty** programme.
- Drainage hose on the siphon**
 - Set programme selector to **Off**, pull out the mains plug.
 - 1. Loosen hose clip, carefully remove drainage hose (residual water).
 - 2. Clean drainage hose and siphon spigot.
 - 3. Re-attach drainage hose and secure connection point with hose clip.
- Filters in the water supply**
 - Risk of electric shock!** Do not immerse Aqua-Stop safety device in water (contains electric valve).
 - Release water pressure in the supply hose:
 - 1. Turn off the tap!
 - 2. Select any programme (except **Spin/Empty**).
 - 3. Press **Start (Start/Pause)**. Leave programme for approx. 40 seconds.
 - 4. Set programme selector to **Off**. Pull out the mains plug!
 - Clean the filters:
 - 1. Remove hose from tap. Clean filter with small brush.
 - and/or for standard and Aqua-Secure models:
 - Remove hose from the rear of the appliance.
 - Take out filter with pliers and clean.
 - 2. Connect the hose and check for leaks.

What to do if ...

- Water is running out.
 - Correctly attach/replace drainage hose.
 - Tighten screw fitting on the supply hose.
- Water not flowing in. Detergent not washed in.
 - Start (Start/Pause)** not selected?
 - Tap not open?
 - Filter blocked? Clean filter –> Page 10.
 - Supply hose kinked or jammed?
- Washing machine door cannot be opened.
 - Safety function active. Stop programme? –> Page 4.
 - Ø (without final spin) selected? –> Page 4.
 - Can be opened via emergency release only? –> Page 9.
- Programme does not start.
 - Start (Start/Pause)** or **Finish in** (Ready in)-time selected?
 - Door closed?
 - Childproof lock active? Deactivate –> Page 5.
- Detergent solution is not drained.
 - Clean detergent solution pump –> Page 10.
 - Clean outlet pipe and/or drainage hose.
- Water not visible in the drum.
 - Not a fault – water below the visible area.
- Spin result not satisfactory.
 - Distribute small and large items of washing in the drum.
 - Less Ironing** selected? –> Page 5.
 - Too low speed selected? –> Page 5.
- Spin cycle actuated several times.
 - Not a fault – unbalanced load detection system adjusts imbalance.
- Residual water in the dispenser for care product.
 - Not a fault – effect of the care product not impaired.
 - If required, clean insert –> Page 9.
- Odour formation in the washing machine.
 - Run **Cottons/Coloureds 90 °C** programme without washing. Use standard detergent.
- Status display  flashes. Overdosage of detergent detected.
 - Too much detergent used?
 - If detergent comes out of the detergent drawer: mix 1 tablespoon of fabric softener with ½ litre of water and pour into dispenser II (*not for outdoor textiles!*)
 - Reduce detergent dosage for the next wash cycle.
- Loud noise formation, vibrations and "Wandering" during spin cycle.
 - Appliance feet fixed?
 - Secure appliance feet –> *Installation instructions*.
 - Transportation safety devices removed?
 - Remove transportation safety devices –> *Installation instructions*.
- Display panel/indicator lights do not function while the appliance is running.
 - Power failure?
 - Fuse tripped? Switch on/replace fuse.
 - If the fault occurs repeatedly, call customer service.
- Programme progress longer than usual.
 - Not a fault – unbalanced load detection system adjusts imbalance by repeatedly distributing the washing.
 - Not a fault – foam detection system active – a rinse cycle is switched on.
- Detergent residue on the washing.
 - Occasionally phosphate free detergents contain water insoluble residue.
 - Select **Rinse** or brush the laundry after washing.
- If a fault cannot be rectified or a repair is required:
 - Set programme selector to **Off** and pull out the mains plug.
 - Turn off the tap and call customer service –> *Installation instructions*.



Follow the safety instructions on Page 8!



Washing machine

Operating instructions



Do not switch on the washing machine until you have read these instructions and the separate installation instructions!

en

SIEMENS

Your washing machine

Congratulations – You have opted for a modern, high-quality domestic appliance manufactured by Siemens. The washing machine is distinguished by its economical energy consumption. Each appliance which leaves our factory is inspected thoroughly to ensure that it functions properly and is in perfect condition.

For further information go to our web site:
<http://www.siemens.de/hausgeraete>

Environmental disposal

Dispose of packaging in an environmentally friendly manner. This appliance has been identified in accordance with the European Directive 2002/96/EG on Waste Electrical and Electronic Equipment (WEEE). The Directive specifies the framework for an EU-wide valid return and recycling of waste appliances.



Contents

Page

Intended use	1
Programmes	1
Selecting and adjusting a programme	3
Washing	3/4
After washing	4
Individual settings	5/6
Important information	6
Overview of programmes	7
Safety instructions	8
Consumption values	8
Care	9
Information on the display panel	9
Maintenance	10
What to do if ...	11



Protection of the environment/conservation tips

- Utilise the maximum amount of washing for the particular programme.
- Wash normally soiled washing without prewash.
- Instead of the **Cottons/Coloureds 90 °C** programme, select **Coloureds eco 60 °C** and **Intensive Wash** additional function. Comparable cleaning result with significantly lower energy consumption.
- Meter detergent according to the manufacturer's instructions and water hardness.
- If the washing is then dried in the tumble dryer, select spin speed according to the instructions of the dryer manufacturer.

Intended use

- for use in the household only,
- for the washing of machine-washable textiles in a detergent solution,
- to be operated with cold drinking water and commercially available detergents and care products which are suitable for use in washing machines.



- Do not leave children unattended near the washing machine!
- The appliance is not intended for use by young children or infirm persons without supervision.
- Keep pets away from the washing machine!

Programmes

For detailed overview of programmes see → Page 7.
Temperature and spin speed can be selected individually irrespective of the selected programme and programme

Cottons/Coloureds

Stains ... } hard-wearing textiles

Coloureds eco ..

Easy-Care easy-care textiles

Delicates/Silk delicate washable textiles

Mixed Fabrics different types of washing

Rinse with subsequent spin cycle

Spin washing washed by hand

Empty the rinsing water if ⌀ occurs

Wool 🐑 hand/machine washable textiles

Easy-Care Dark .. dark textiles

PowerWash 60' ... hard-wearing textiles

Rapid 15' Short programme

Outdoor Wear weather, sport and outdoor textiles → Page 6

Shirts/Business ... non-iron shirts

Preparation



Correct installation according to separate installation instructions!



Checking the machine



Never switch on a damaged machine!
Inform your customer service!



Insert mains plug



With dry hands only!
Take hold of the plug only!

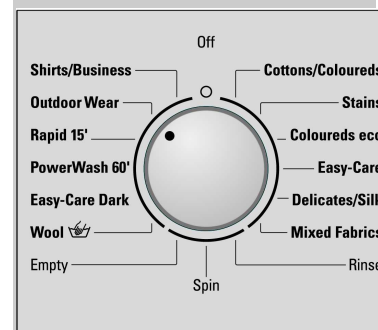


Turn on the tap

Dispenser II: detergent for main wash, softener, bleaching agent, stain remover
Dispenser ⌀: fabric softener, starch
Dispenser I: detergent for prewash



Programme selector



Programme selector for switching the machine on and off and for selecting the programme. Can be rotated in either direction.

Display panel/Option buttons



Temp. °C Spin rpm Finish in

Intensive Wash Pre-wash

Temp. °C Spin rpm Finish in

Intensive Wash Pre-wash

Temp. °C Spin rpm Finish in

Intensive Wash Pre-wash

Temp. °C Spin rpm Finish in

Intensive Wash Pre-wash

Temp. °C Spin rpm Finish in

Intensive Wash Pre-wash

Temp. °C Spin rpm Finish in

Intensive Wash Pre-wash

Temp. °C Spin rpm Finish in

Intensive Wash Pre-wash

Temp. °C Spin rpm Finish in

Intensive Wash Pre-wash

Before using your washing machine for the first time
wash once without any washing -> Page 9.

Sorting and inserting the washing

Follow manufacturer's care information!
According to the information on the care labels.
According to type; colour; soiling and temperature.
Do not exceed maximum load -> Page 7.

Follow important instructions! -> Page 6!


Insert large and small items of washing!
Turn off the tap. Do not jam items of washing between the washing machine door and rubber seal.

Add detergent and care product

Meter accordingly:
Washing amount, soiling, water hardness (ask your water supply company) and manufacturer's instructions. Pour liquid detergent into the appropriate dispenser and place in the drum.

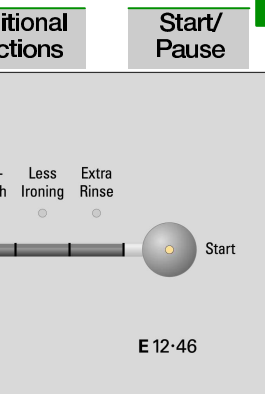
i Dilute viscous fabric softener and fabric conditioner with water. Prevents blockage of the overflow.

Selecting** and adjusting a programme

i ** If the symbol  flashes on the display panel, childproof lock active -> Deactivate, Page 5.
Additional functions and option buttons
-> Individual settings, Page 5.

Select Start (Start/Pause)

i All buttons are sensitive, they only need to be touched gently!
If the Option buttons are touched for longer, the selected options will run automatically!



temperature (* = cold)

spin speed (* depending on model) or Ø (final spin)

ends in ...

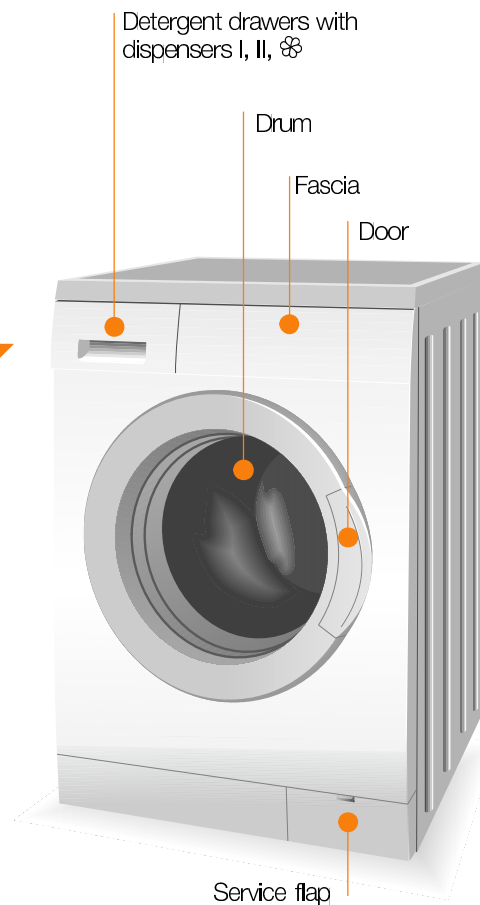
the progress displays:

Rinse, Spin, programme duration or end (-0-)

lock -> Page 5.

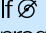
or, top up washing -> Pages 4, 5.

Washing



Washing

Removing the washing

Open washing machine door and remove washing.
If  (Rinse stop = without final spin) active: Set programme selector to **Empty** or select spin speed. Select **Start (Start/Pause)**.
Remove any foreign objects – risk of rusting.

Turn off tap

Not required for Aqua-Stop models -> Installation instructions..

Switch off

Set programme selector to **Off**.

End of programme when ...

... **Start (Start/Pause)** flashes and **-0-** is indicated on the display panel.

Terminating the programme

Programmes with high temperature, first:

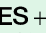
- Cool washing: Select **Rinse**.
Washing machine door remains locked.
- Select **Off**.
- Select **Spin** or **Empty**.
- Select **Start (Start/Pause)**.

Change programme if ...

... you have mistakenly selected a wrong programme:

- Reselect programme.
- Select **Start (Start/Pause)**. The new programme starts from the beginning.

Top up washing if ... -> Page 5

... **Start (Start/Pause)** selected and then **YES + ** are lit on the display panel. If **NO**, the door cannot be opened.
- Select **Start (Start/Pause)**.

Individual settings

Option buttons

You can change the spin speed and temperature beforehand and while the selected programme is running. Effects dependent on the programme progress.

Temp.°C (Temperature)

You can change the indicated washing temperature. The maximum washing temperature which can be selected depends on the set programme.

Spin rpm (Revolutions per minute)

You can change the indicated spin speed. The maximum spin speed which can be selected depends on the set programme.

Finish in (Ready in)

The respective programme duration is displayed by selecting the programme. The programme start can be delayed before the programme begins. The **Finish in** (Ready in)-time can be set in hour-steps up to maximum 24h. Keep pressing the **Finish in** (Ready in) button until the required number of hours is indicated (h=hour). Select **Start** (Start/Pause).

Additional functions → see also Overview of programmes, Page 7

Intensive Wash	Extend the washing time for a more intensive washing of heavily soiled washing or for washing at maximum load → Overview of programmes, Page 7.
Prewash	For heavily soiled, hard-wearing washing, e.g. made of cotton or linen. Prewash at 30 °C.
Less Ironing	Special spin sequence with subsequent fluffing. Gentle final spin – residual moisture in the washing increased slightly.
Extra Rinse	Additional rinse cycle. For areas with very soft water or for further improvement of the rinsing result.

Childproof lock and top up

Childproof lock/appliance lockout	Secure the washing machine to prevent the set functions from being unintentionally changed. ON/OFF: After the programme starts/ends press Start (Start/Pause) for approx. 5 seconds. Note: Childproof lock may remain activated until the next programme starts, even after the machine has been switched off! Then deactivate the childproof lock before the programme starts and, if required, re-activate after the programme starts.
-----------------------------------	---

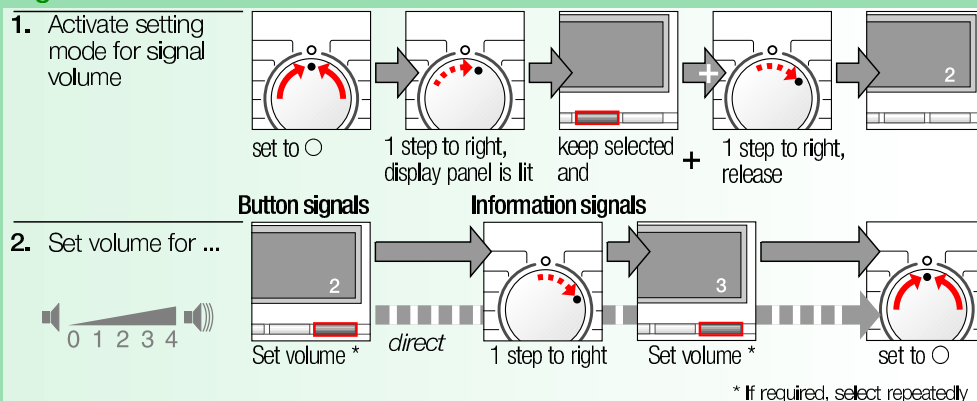
YES + ① Topping up washing	Select Start (Start/Pause) button if you want to add more items of washing after the programme starts. The machine checks whether a top-up is possible. YES + ① are lit: Top up possible. YES flashes: Spin speed too high, wait until YES + ① are lit. NO: Top up not possible. Note: At a high water level and/or temperature or during the spin cycle the door remains locked for reasons of safety. To continue the programme, select the Start (Start/Pause) button.
-------------------------------	--

Start (Start/Pause)

To start the programme or top up washing and to activate/deactivate the childproof lock.

Individual settings

Signal



Important information



Protecting the washing and the machine

- Empty pockets.
- Remove metal parts (paper clips, etc.).
- Wash delicates in the net/bag (tights, curtains, underwired bras).
- Close zips, button up covers.
- Brush sand out of pockets and collars.
- Remove curtain fittings or include in the net/bag.



Washing with different degrees of soiling

Light	Wash new items separately. Do not prewash.
Heavy	If required, pretreat stains. Select Intensive Wash additional function. Load less washing. Select Intensive Wash additional function, if necessary.



Soaking

Load washing of the same colour.
Pour soaking agent/detergent into dispenser II according to the manufacturer's instructions. Set programme selector to **Cottons/Coloureds 30 °C** and select **Start** (Start/Pause). After approx. 10 minutes select **Start** (Start/Pause). After the required soaking time reselect **Start** (Start/Pause) if the programme is to be continued or change the programme.



Starching

Washing should not be treated with fabric softener.
Liquid starch can be used in all wash programmes. Pour starch into the fabric softener dispenser according to manufacturer's specifications & (if required clean beforehand).



Dyeing/Bleaching


Dye in household quantities only. Salt may attack stainless steel! Observe specifications of the dye manufacturer! Do **not** bleach washing in the washing machine.



Outdoor

Do not use fabric softener!
Special detergents suitable for machine wash available in particular from sports shops. Pour detergent into dispenser II according to manufacturer's specifications. Set programme selector to **Outdoor Wear**. Select temperature and **Start** (Start/Pause).

Overview of programmes -> Observe table of consumption values on Page 8 and instructions on Page 6!

Programmes	°C	max.	Type of washing	Additional functions; information
Cottons/Coloureds	☼-90 °C			
Stains	☼-60 °C	7 kg*	Hardwearing textiles, heat-resistant textiles made of cotton or linen	Intensive Wash, Prewash, Less Ironing, Extra Rinse
Coloureds eco	☼-60 °C			
PowerWash 60'	☼-60 °C	4 kg	Hardwearing textiles made of cotton or blended fabrics	time-controlled programme, short programme for normally soiled washing
Easy-Care	☼-60 °C		Easy-care textiles made of cotton, linen, synthetic fibres or blended fabrics	Intensive Wash, Prewash, Less Ironing, Extra Rinse
Mixed Fabrics	☼-40 °C	3 kg*	Textiles made of cotton and easy-care textiles	Intensive Wash, Prewash, Less Ironing, Extra Rinse; different types of washing can be washed together
Easy-Care Dark	☼-40 °C		Dark textiles made of cotton and dark easy-care textiles	Intensive Wash, Prewash, Less Ironing, Extra Rinse; reduced rinse and final spin cycle
Delicates/Silk	☼-30 °C		For delicate, washable textiles, e.g. made of silk, satin, synthetic fibres or blended fabrics (e.g. curtains)	Intensive Wash, Prewash, Less Ironing, Extra Rinse; no spin cycle between the rinse cycles
Wool 	☼-40 °C		Hand or machine-washable wool or rich-wool textiles	Intensive Wash, Prewash, Less Ironing, Extra Rinse; especially gentle wash programme to prevent shrinkage, longer programme pauses (textiles rest in wash liquor)
Rapid 15'	☼-40 °C	2 kg	Easy-care textiles made of cotton, linen, synthetic fibres or blended fabrics	Short programme approx. 15 minutes, suitable for lightly soiled washing
Outdoor Wear	☼-40 °C		Weather, sport and outdoor textiles also with climate protection membrane	Intensive Wash, Less Ironing, Extra Rinse; reduced final spin at intervals
Shirts/Business	☼-60 °C		Non-iron shirts made of cotton, linen, synthetics fibres or blended fabric	Intensive Wash, Prewash, Less Ironing, Extra Rinse; short spin only, hang up dripping wet
Additional programmes				
Rinse, Spin, Empty				

 The programmes are time-controlled for lightly soiled textiles. If textiles are heavily soiled select additional function **Intensive Wash**.

* When washing at maximum load, always select **Intensive Wash** additional function.

Irrespective of type of washing, **Easy-Care 40 °C** at max. spin speed is optimally suitable as **Short programme**.

Programmes without prewash – pour detergent into dispenser **II**, programmes with prewash – divide detergent between dispensers **I** and **II**.

Siemens-Elektrogeräte GmbH
Carl-Wery-Str. 34
81739 München / Germany

WM12E46SGB / ...

8807
9000 382 239



Safety instructions

- Read and follow the operating and installation instructions and all other information enclosed with the washing machine.
- Retain documents for subsequent use.

Risk of electric shock

- Never pull out the mains plug by tugging the power cord!
- Never insert/pull out the mains plug with damp hands.

Danger to life

On redundant appliances:

- Pull out the mains plug!
- Sever the power cord and discard together with the plug.
- Destroy the lock on the washing-machine door. This will prevent children from locking themselves in and suffocating.

Risk of suffocation

- Keep packaging, plastic film and packaging parts out of the reach of children.

Risk of poisoning

- Keep detergents and care products out of the reach of children.

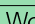
Risk of explosion

- Caused by detergents containing solvents, e.g. stain remover/items of washing pretreated with solvent naphtha may result in an explosion after being loaded into the washing machine. Before hand thoroughly rinse items of washing by hand.

Risk of injury

- Washing machine door may become very hot.
- Caution when draining hot detergent solution.
- Do not climb on the washing machine.
- Do not lean on the open washing machine door.
- Do not reach into the drum in case it is still rotating.
- Caution when opening the detergent drawer while the appliance is running!

Consumption values

Programme	Additional function	Load	Current**	Water**	Programme duration**
Cottons/Coloureds 40 °C*	Intensive Wash	7 kg	0.65 kWh	60 l	2:30 h
Coloureds eco 60 °C*	Intensive Wash	7 kg	1.05 kWh	47 l	2:58 h
Cottons/Coloureds 90 °C	Intensive Wash	7 kg	2.00 kWh	75 l	2:33 h
Easy-Care 40 °C*	Intensive Wash	3 kg	0.55 kWh	50 l	1:24 h
Easy-Care 40 °C* (also suitable as Short programme)	–	3 kg	0.54 kWh	40 l	0:55 h
Mixed Fabrics 30 °C	–	3 kg	0.32 kWh	35 l	0:44 h
Delicates/Silk 30 °C	–	2 kg	0.25 kWh	38 l	0:32 h
Wool  30 °C*	–	2 kg	0.15 kWh	34 l	0:40 h

* Programme setting for test according to currently valid European standard 60456. Information about comparability tests: The test programmes test at: maximum load, **Intensive Wash** additional function, maximum spin speed. Select the **Easy-Care 40 °C** programme without **Intensive Wash** additional function and at maximum spin speed as **Short programme** for coloureds wash.

** The values deviate from the indicated values depending on water pressure, water hardness, water inlet temperature, room temperature, type and amount of washing and degree of soiling, utilised detergent, fluctuations in the mains voltage and selected additional functions.

Care



- **Risk of electric shock!**
Pull out the mains plug!
- **Risk of explosion!** No solvents!

i Before using your washing machine for the first time

Do not put any washing in the washing machine! Turn on the tap, fill the appliance with approx. 1 litre of water and then pour ½ measuring cup of detergent into dispenser II. Set programme selector to **Easy-Care 60 °C** and select **Start (Start/Pause)**. At the end of the programme set the programme selector to **Off**.

i Machine housing, control panel

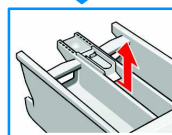
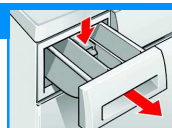
- Wipe with a soft, damp cloth.
- Do not use abrasive cloths, sponges or detergents (stainless steel cleaner).
- Immediately remove washing and cleaning agent residue.
- Do not clean the appliance with a water jet.



Clean the detergent drawer ...

... if it contains detergent or fabric softener residue.

1. Pull out, depress insert, take out drawer all the way. Take out insert: using your finger, press insert upwards.
2. Clean detergent dispenser and insert with water and a brush and dry.
3. Attach insert and lock into position (push cylinder onto guide pin).
4. Insert detergent drawer.



i Leave detergent drawer open so that residual water can evaporate.

i Drum

Leave washing machine door open so that the drum can dry out. Rust stains – use chlorine-free cleaning agent, not steel wool.

i Descaling No washing in the machine!

Descale according to the instructions of the descaling agent-manufacturer, not required for correct detergent dosage.



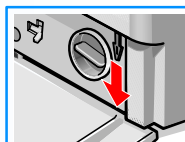
Emergency release, e.g. if power failure occurs

The programme continues running when the power is restored. If the washing is still to be removed, the door can be opened as described below:

Risk of scalding!

Wash liquor and washing may be hot. If required, leave to cool down.
Do not reach into the drum in case it is still rotating.
Do not open the door if you can still see water through the glass.

1. Select programme selector to **Off**, pull out the mains plug.
2. Drain detergent solution -> Page 10.
3. Pull down emergency release with a tool and release. Door can then be opened.



Information on display panel

depending on model

F:16	Close the washing machine door properly; washing may be caught.
F:17	Turn on the tap all the way, supply hose kinked/jammed; clean filter -> Page 10, water pressure too low.
F:18	Filter blocked; clean detergent solution pump -> Page 10. Outlet pipe/drainage hose blocked; clean detergent solution pump -> Page 10.
F:21	Motor fault. Call customer service!
F:23	Water in the base pan, appliance leaking. Call customer service!

Maintenance



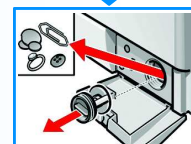
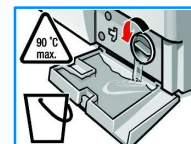
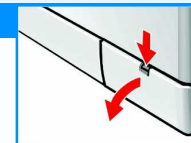
- **Risk of scalding!**
Allow detergent solution to cool down!
- Turn off the tap!



Detergent solution pump

Set programme selector to **Off**, pull out the mains plug.

1. Open and remove service flap.
2. For models with drainage hose:
Take drainage hose out of the holder and pull out of the housing. Place a container on the floor. Remove sealing cap, allow detergent solution to flow out. Press on sealing cap and insert drainage hose into the holder.
For models without drainage hose:
Carefully unscrew pump cover until the detergent solution begins to run out. When the service flap is half full, screw back the pump cover and empty the service flap. Repeat steps until all the detergent solution has run out.
3. Carefully unscrew the pump cover (residual water).
4. Clean the interior, pump cover thread and pump housing (fan impeller in the detergent solution pump must rotate).
5. Reinsert and screw on pump cover.
6. Insert and close service flap.



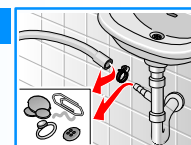
To prevent unused detergent from flowing into the outlet during the next wash: Pour 1 litre of water into dispenser II and start the **Empty** programme.



Drainage hose on the siphon

Set programme selector to **Off**, pull out the mains plug.

1. Loosen hose clip, carefully remove drainage hose (residual water).
2. Clean drainage hose and siphon spigot.
3. Re-attach drainage hose and secure connection point with hose clip.



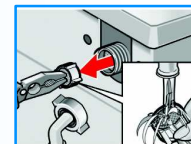
Filters in the water supply



Risk of electric shock! Do not immerse Aqua-Stop safety device in water (contains electric valve).

Release water pressure in the supply hose:

1. Turn off the tap!
 2. Select any programme (except **Spin/Empty**).
 3. Press **Start (Start/Pause)**. Leave programme for approx. 40 seconds.
 4. Set programme selector to **Off**. Pull out the mains plug!
- Clean the filters:
1. Remove hose from tap. Clean filter with small brush.
- and/or for standard and Aqua-Secure models:
- Remove hose from the rear of the appliance. Take out filter with pliers and clean.
2. Connect the hose and check for leaks.

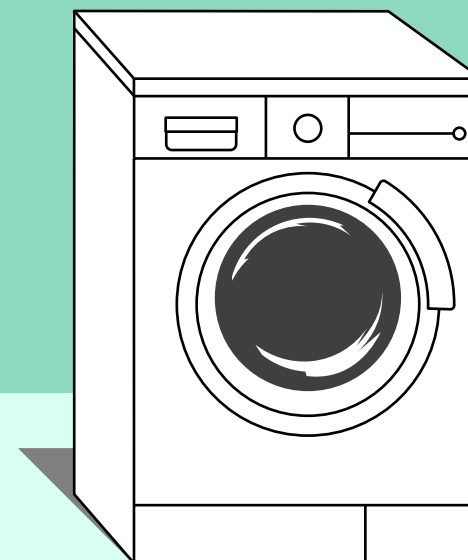


What to do if ...

- Water is running out.
 - Correctly attach/replace drainage hose.
 - Tighten screw fitting on the supply hose.
- Water not flowing in.
Detergent not washed in.
 - **Start (Start/Pause)** not selected?
 - Tap not open?
 - Filter blocked? Clean filter → Page 10.
 - Supply hose kinked or jammed?
- Washing machine door cannot be opened.
 - Safety function active. Stop programme? → Page 4.
 - Ø (without final spin) selected? → Page 4.
 - Can be opened via emergency release only? → Page 9.
- Programme does not start.
 - **Start (Start/Pause)** or **Finish in** (Ready in)-time selected?
 - Door closed?
 - Childproof lock active? Deactivate → Page 5.
- Detergent solution is not drained.
 - Clean detergent solution pump → Page 10.
 - Clean outlet pipe and/or drainage hose.
- Water not visible in the drum.
 - Not a fault – water below the visible area.
- Spin result not satisfactory.
 - Distribute small and large items of washing in the drum.
 - **Less Ironing** selected? → Page 5.
 - Too low speed selected? → Page 5.
- Spin cycle actuated several times.
 - Not a fault – unbalanced load detection system adjusts imbalance.
- Residual water in the dispenser for care product.
 - Not a fault – effect of the care product not impaired.
 - If required, clean insert → Page 9.
- Odour formation in the washing machine.
 - Run **Cottons/Coloureds 90 °C** programme without washing. Use standard detergent.
- Status display  flashes.
Overdosage of detergent detected.
 - Too much detergent used?
 - If detergent comes out of the detergent drawer: mix 1 tablespoon of fabric softener with ½ litre of water and pour into dispenser II (not for outdoor textiles!)
 - Reduce detergent dosage for the next wash cycle.
- Loud noise formation, vibrations and "Wandering" during spin cycle.
 - Appliance feet fixed?
 - Secure appliance feet → Installation instructions.
 - Transportation safety devices removed?
 - Remove transportation safety devices → Installation instructions.
- Display panel/indicator lights do not function while the appliance is running.
 - Power failure?
 - Fuse tripped? Switch on/replace fuse.
 - If the fault occurs repeatedly, call customer service.
- Programme progress longer than usual.
 - Not a fault – unbalanced load detection system adjusts imbalance by repeatedly distributing the washing.
 - Not a fault – foam detection system active – a rinse cycle is switched on.
- Detergent residue on the washing.
 - Occasionally phosphate free detergents contain water insoluble residue.
 - Select **Rinse** or brush the laundry after washing.
- If a fault cannot be rectified or a repair is required:
 - Set programme selector to **Off** and pull out the mains plug.
 - Turn off the tap and call customer service → Installation instructions.



Follow the safety instructions on Page 8!



Washing machine

Operating instructions

en



Do not switch on the washing machine until you have read these instructions and the separate installation instructions!

SIEMENS