

Your washing machine

Congratulations – You have opted for a modern, high-quality domestic appliance manufactured by Siemens. The washing machine is distinguished by its economical energy consumption.

Each appliance which leaves our factory is inspected thoroughly to ensure that it functions properly and is in perfect condition.

For further information and a selection of our products go to our web site:

www.siemens-home.com or contact our customer service centres

Environmental disposal

Dispose of packaging in an environmentally friendly manner.

This appliance has been identified in accordance with the European Directive 2002/96/EG on Waste Electrical and Electronic Equipment (WEEE).

The Directive specifies the framework for an EU-wide valid return and recycling of waste appliances.

Contents

	Page
■ Intended use	1
■ Programmes	1
■ Setting programme	3
■ Washing	3/4
■ After washing	4
■ Individual settings	5
■ Important information	6
■ Overview of programmes	7
■ Safety instructions	8
■ Consumption values	8
■ Care	9
■ Information on the display panel	9
■ Maintenance	10
■ What to do if ...	11

Intended use

- for use in the household only,
- for the washing of machine-washable textiles in a detergent solution,
- to be operated with cold drinking water and commercially available detergents and care products which are suitable for use in washing machines.

- ⚠ Do not leave children unattended near the washing machine!
- Keep pets away from the washing machine!

Programmes

For detailed overview of programmes → Page 7.

Spin speed can be selected individually.

Cottons/Coloureds	...	hard-wearing textiles
Stains	...	hard-wearing textiles
Mixed Fabrics	...	different types of washing
Easy-Care	...	easy-care textiles
Delicates	...	delicate washable textiles
Wool/Handwash	...	hand/machine-washable textiles
Empty	...	the rinsing water if ∅ occurs
Spin	...	washing washed by hand
Rinse	...	with subsequent spin cycle; for hand-washed items, starching or "freshen up" items, → Page 6.

Preparation

⚠ Correct installation according to separate installation instructions.

Checking the machine

- Never switch on a damaged machine!
- Inform your customer service!

Turn on the tap

Insert mains plug

- ⚠ With dry hands only! Take hold of the plug only!

Before washing for the first time, wash once without any washing. See page 6

Sorting and inserting the washing

Follow manufacturer's care information! According to the information on the care labels. According to type, colour, soiling and temperature. Do not exceed maximum load → page 7.

Follow important instructions! → page 6!

Insert large and small items of washing! Close the washing machine door. Take care not to trap any items of clothing between the loading door and rubber seal.

Add detergent and care product

Meter accordingly: Washing amount, soiling, water hardness (ask your water supply company) and manufacturer's instructions. Pour liquid detergent into the appropriate dispenser and place in the drum.

- Dispenser I: Detergent for prewash
- Dispenser ∅: Fabric softener, starch
- Dispenser II: Detergent for main wash, fabric softener, bleaching agent, stain remover

i Dilute viscous fabric softener and fabric conditioner with water. Prevents blockage of the overflow.

Set and adjust programme

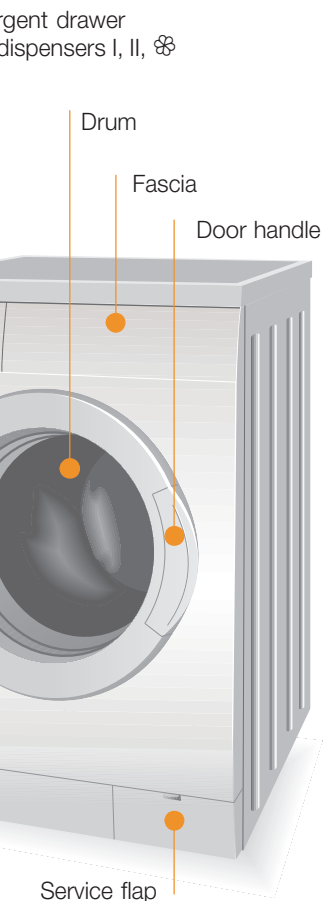
For additional functions and option buttons see individual settings, → page 5.

i All buttons are sensitive, they only need to be touched gently! If the Option buttons are touched for longer, the setting options will automatically run!

Select Start

i Programme selector for switching the machine on and off and for selecting the programme. Can be rotated in either direction.

Wash



Removing washing

Open washing machine door and remove washing. Remove any foreign objects – risk of rusting. Leave door and detergent drawer open so that residual water can evaporate.

Turn off the tap

Not required for Aqua-Stop models.

Switch off

Set programme selector to ∅ Off.

End of programme when ...

... Start flashes and End is lit on the indicator light.

If ∅ (without final spin) active: Set programme selector to Empty or select spin speed. Select Start.

Change programme ...

If you have mistakenly selected a wrong programme:

- Reselect programme.
- Select Start.

... or terminate

- Programmes with high temperature, first:
- Cool washing: Select Rinse.
- Washing machine door remains locked.
- Select ∅ Off.
- Select Spin or Empty.
- Select Start.

Individual settings

Spin

The spin speed or ∅ (without final spin) can be set before and while the selected programme is running. Effects dependent on the programme progress. The maximum selectable spin speed depends on the model and the set programme.

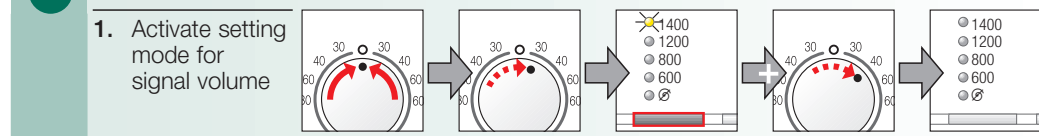
Additional functions* see also programme overview (* depending on model)

Intensive wash	Extension of the washing time for a more intensive washing of highly soiled washing or 7 kg of cottons and coloureds.
Prewash	For heavily soiled, hard-wearing washing, e.g. made of cotton or linen. Prewash at 30 °C.
Less Ironing	Special spin sequence with subsequent fluffing. Gentle final spin – residual moisture in the washing increased slightly.
Extra Rinse	Additional rinse cycle and extended washing time. For areas with very soft water or for further improvement of the rinsing result.

Start

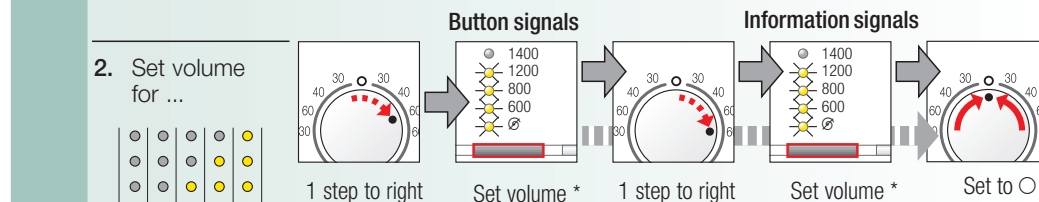
For starting or interrupting the programme.

Signal



Optional:

Blind mode* ON-OFF



* If required, select repeatedly

Important information

Protecting the washing and the machine

- Empty pockets.
- Remove metal parts (paper clips, etc.).
- Wash delicates in the net/bag (tights, curtains, underwired bras).
- Close zips, button up covers.
- Brush sand out of pockets and collars.
- Remove curtain fittings or include in the net/bag.

Before washing for the first time

Do not put any washing in the washing machine! Turn on the tap, fill the appliance with approx. 1 litre of water and then pour ½ measuring cup of detergent into dispenser II.

Set programme selector to Easy-Care 60 °C and select Start. At the end of the programme set the programme selector to ∅ Off.

Washing with different degrees of soiling

Light	Wash new items separately. Do not prewash.
Heavy	If required, pretreat stains. Select Intensive Wash additional function. Load less washing. Prewash.

Soaking

Load washing of the same colour. Pour soaking agent/detergent into dispenser II according to the manufacturer's instructions. Set programme selector to Cottons/Coloureds 30 °C and select Start. After approx. 10 minutes select Start. After the required soaking time reselect Start if the programme is to be continued or change the programme.

Starching

Washing should not be treated with fabric softener. Liquid starch can be used in all wash programmes. Meter starch into the fabric softener dispenser ∅ according to manufacturer's specifications.

Dyeing/Bleaching

Dye in small quantities only. Salt can corrode stainless steel. Observe the dye manufacturer's specifications. Do not bleach laundry in the washing machine.

Freshen up

Use programme Rinse. For items, that have been tucked away or stored for a period of time, to remove creases caused by folding and storage and to eliminate odours. Use fabric conditioner for "fresh" smell.

Protection of the environment/conservation tips

- Utilise the maximum amount of washing for the particular programme.
- Wash normally soiled washing without prewash.
- Instead of Cottons/Coloureds 90 °C select Stains 60 °C programme. Comparable cleaning result with significantly lower energy consumption.
- Meter detergent according to the manufacturer's instructions and water hardness.
- If the washing is then dried in the tumble dryer, select spin speed according to the instructions of the dryer manufacturer.

Programmes		°C	max.	Type of washing	Additional functions (depending on model); information	
Cottons/Coloureds	30, 40, 60, 90 °C			Hard-wearing textiles, heat-resistant textiles made of cotton or linen	Intensive Wash, Prewash, Less Ironing, Extra Rinse	
Stains	60 °C		7 kg*			
Easy-Care	30, 40, 60 °C		3 kg*	Easy-care textiles made of cotton, linen, synthetic fibres or blended fabrics	Intensive Wash, Prewash, Less Ironing, Extra Rinse; also suitable as Short programme	
Mixed Fabrics	30 °C			Textiles made of cotton and easy-care textiles	Intensive Wash, Prewash, Less Ironing, Extra Rinse; Different types of washing can be washed together	
Delicates	30 °C		2 kg	For delicate, washable textiles, e.g. made of silk, satin, synthetic fibres or blended fabrics (e.g. curtains)	Intensive Wash, Prewash, Less Ironing, Extra Rinse; no spin cycle between the rinse cycles	
Wool/Handwash	cold, 30 °C			Hand or machine-washable wool or rich-wool textiles	Especially gentle wash programme to prevent shrinkage, prolonged programme pauses (textiles rest in the detergent solution).	
Additional programmes					Rinse, Spin, Empty	

Siemens Electrolux GmbH
Carl-Wery-Str. 34
81739 München / Germany

WM14E162GB...

9000 376 488
0110

Safety instructions

- Read and follow the operating and installation instructions and all other information enclosed with the washing machine.
- Retain documents for subsequent use.
- Risk of electric shock**
 - Never pull out the mains plug by tugging the power cord!
 - Never insert/pull out the mains plug with damp hands.
- Risk of injury**
 - Washing machine door may become very hot.
 - Caution when draining hot detergent solution.
 - Do not climb on the washing machine.
 - Do not lean on the open washing machine door.
 - Do not touch the drum in case it is still spinning.
 - Caution when opening the detergent drawer while washing machine is running!
 - Keep detergents and care products out of the reach of children.
 - Keep packaging, plastic film and packaging parts out of the reach of children.
- Risk of poisoning**
- Risk of suffocation**
- Danger to life**
 - On redundant appliances:
 - Pull out the mains plug.
 - Sever the power cord and discard together with the plug.
 - Destroy the lock on the washing machine door. This will prevent children from locking themselves in and suffocating.
 - Caused by detergents containing solvents, e.g. stain remover/items of washing pretreated with solvent naphtha may result in an explosion after being loaded into the washing machine. Beforehand thoroughly rinse items of washing by hand.
- Risk of explosion**

Consumption values

Programme	Additional function	Load	Current **	Water **	Programme duration **
Cottons/Coloureds 40 °C *	Intensive Wash	7 kg	0.65 kWh	60 l	2:30 h
Stains 60 °C*	Intensive Wash	7 kg	1.19 kWh	49 l	2:36 h
Cottons/Coloureds 90 °C	Intensive Wash	7 kg	2.00 kWh	75 l	2:33 h
Easy-Care 40 °C *	Intensive Wash	3 kg	0.55 kWh	50 l	1:24 h
Easy-Care 40 °C * (also suitable as Short programme)	–	3 kg	0.54 kWh	40 l	0:55 h
Mixed Fabrics 30 °C	–	3 kg	0.32 kWh	35 l	0:44 h
Delicates 30 °C	–	2 kg	0.25 kWh	38 l	0:32 h
Wool/Handwash 🧶 30 °C *	–	2 kg	0.15 kWh	34 l	0:40 h

- * Programme setting to be tested in accordance with European standard 60 456.
 - Note on comparative tests: test the test programme with maximum load, **Intensive Wash** option selected, maximum spin speed.
 - A **short programme** which can be used for coloured items is **Easy-Care 40 °C**, without the **Intensive Wash** option selected and set to maximum spin speed.
- ** The values deviate from the indicated values depending on water pressure, water hardness, water inlet temperature, room temperature, type and amount of washing and degree of soiling, utilised detergent, fluctuations in the mains voltage and selected additional functions.

Care

- Machine housing, control panel**
 - Wipe with a soft, damp cloth.
 - Do not use any abrasive cloths, sponges or cleaning agents (stainless-steel cleaner).
 - Immediately remove washing and cleaning agent residue.
 - Do not clean the appliance with a water jet.

Clean the detergent drawer ...

... if it contains detergent or fabric softener residue.

- Pull out, depress insert, completely remove.
- Open the cover.
- Clean with water and dry.
- Close and lock the cover (place cylinder on guide pin).
- Insert detergent drawer.

Leave detergent drawer open so that residual water can evaporate.

Drum

Leave washing machine door open so that the drum can dry out.
Rust stains – use chlorine-free cleaning agent, not steel wool.

Descaling No washing in the machine!

Descale according to the instructions of the descaling agent-manufacturer, not required for correct detergent dosage.

Information on the display panel

A signal sounds and indicator lights for the spin speed flash:

- Close the washing machine door properly; washing may be caught.
- Detergent solution pump blocked; Clean the detergent solution pump -> *page 10*.
- Drainage hose / waste pipe blocked; Clean the drainage hose at the siphon -> *Page 10*.
- Turn the tap on fully, supply hose kinked/ jammed; clean filter -> *page 10*, water pressure too low.
- Motor fault! Call customer service!
- Water in the base pan, appliance leaking. Call customer service!

Maintenance

Detergent-solution pump

Set programme selector to **Off**, pull out the mains plug.

- Open and remove service flap.
- For models with drainage hose:
 - Take drainage hose out of the holder and pull out of the housing. Remove sealing cap, allow detergent solution to flow out.
 - Press on sealing cap and insert drainage hose into the holder.
- For models without drainage hose:
 - Carefully unscrew pump cover until the detergent solution begins to run out. When the service flap is half full, screw back the pump cover and empty the service flap. Repeat steps until all the detergent solution has run out.
- Carefully unscrew the pump cover (residual water).
- Clean the interior, pump cover thread and pump housing (fan impeller in the detergent-solution pump must rotate).
- Reinsert and screw on pump cover.
- Insert and close service flap.

To prevent unused detergent from flowing into the outlet during the next wash: Pour 1 litre of water into dispenser II and select the **Empty** programme.

Drainage hose at the siphon

Set the programme selector to **Off**, disconnect the mains plug.

- Loosen the hose clamp, carefully remove the drainage hose (residual water).
- Clean the drainage hose and siphon connecting piece.
- Reattach the drainage hose and secure the connection with the hose clamp.

Filters in the water supply

Risk of electric shock! Do not immerse Aqua-Stop safety device in water (contains electric valve).

Release water pressure in the supply hose:

- Turn off the tap!
- Select any programme (except **Spin/Empty**).
- Press **Start**. Leave programme for approx. 40 seconds.
- Set programme selector to **Off**.
- Remove hose from tap.
- Clean filter with small brush.
- Depending on the model, remove hose from the rear of the appliance and clean the filter.

- Connect the hose and check for leaks.

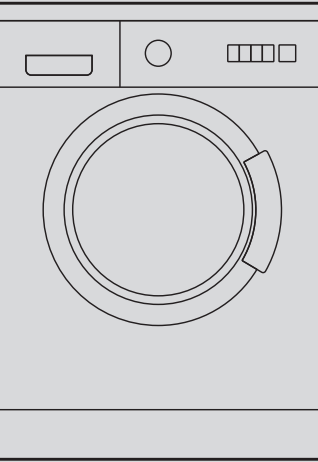
What to do if ...

- Water is running out.
 - Correctly attach/replace drainage hose.
 - Tighten screw-fitting on the supply hose.
- Water not flowing in. Detergent not washed in.
 - Start** not selected?
 - Tap not open?
 - Filter blocked? Clean filter -> *page 10*.
 - Supply hose kinked or jammed?
- Washing machine door cannot be opened.
 - Safety function active, wait for approx. 2 minutes.
 - Ø (without final spin) selected?
- Programme does not start.
 - Start** selected?
 - Door closed?
- Detergent solution is not drained.
 - Clean detergent-solution pump -> *page 10*.
 - Clean outlet pipe and/or drainage hose.
- Washing not spun correctly.
 - Distribute small and large items of washing in the drum.
- Spin cycle actuated several times.
 - Not a fault – unbalanced load detection system adjusts imbalance.
- Water not visible in the drum.
 - Not a fault – water below the visible area.
- Residual water in the dispenser for care product.
 - Not a fault – effect of the care product not impaired.
- Odour formation in the washing machine.
 - Run **Cottons/Coloureds90 °C** programme without washing. Use standard detergent.
- Foam is coming out of the detergent drawer.
 - Too much detergent used? Mix 1 tablespoon of fabric softener with ½ litre of water and pour into compartment II (*not with outdoor fabrics!*).
 - Reduce detergent dosage for the next wash cycle.
- Vibrations during spin cycle.
 - Appliance feet fixed? Secure appliance feet (*Installation instructions*).
 - Transportation safety devices removed? Remove transportation safety devices (*Installation instructions*).
- Spin result not satisfactory.
 - Less Ironing*** selected? -> *page 5* (* depending on model)
- Display panel/indicator lights do not function while the appliance is running.
 - Power failure?
 - Fuse tripped? Switch on/replace fuse.
 - If the fault occurs repeatedly, call customer service.
- Programme progress longer than usual.
 - Not a fault – unbalanced load detection system adjusts imbalance by repeatedly distributing the washing.
 - Not a fault – Foam detection system active – a rinse cycle is started.
- Detergent residue on the washing.
 - Occasionally phosphate-free detergents contain water-insoluble residue.
 - Select **Rinse** or brush the laundry after washing.
- If a fault cannot be rectified or a repair is required:
 - Set programme selector to **Off** and pull out the mains plug.
 - Turn off the tap and call customer service (*Installation instructions*).



Read these instructions before switching on the washing machine! Also follow the separate Installation instructions. Follow the safety instructions on page 8!

Operating instructions



Washing machine

Your washing machine

Congratulations – You have opted for a modern, high-quality domestic appliance manufactured by Siemens. The washing machine is distinguished by its economical energy consumption. Each appliance which leaves our factory is inspected thoroughly to ensure that it functions properly and is in perfect condition.

For further information and a selection of our products go to our web site:
www.siemens-home.com or contact our customer service centres

Environmental disposal

Dispose of packaging in an environmentally friendly manner.

This appliance has been identified in accordance with the European Directive 2002/96/EG on Waste Electrical and Electronic Equipment (WEEE).

The Directive specifies the framework for an EU-wide valid return and recycling of waste appliances.



Contents

Page

Intended use	1
Programmes	1
Setting programme	3
Washing	3/4
After washing	4
Individual settings	5
Important information	6
Overview of programmes	7
Safety instructions	8
Consumption values	8
Care	9
Information on the display panel	9
Maintenance	10
What to do if ...	11

Intended use

- for use in the household only,
- for the washing of machine-washable textiles in a detergent solution,
- to be operated with cold drinking water and commercially available detergents and care products which are suitable for use in washing machines.



- Do not leave children unattended near the washing machine!
- Keep pets away from the washing machine!

Preparation



Correct installation according to separate installation instructions.



Checking the machine

- Never switch on a damaged machine!
- Inform your customer service!



Turn on the tap



Insert mains plug



With dry hands only!
Take hold of the plug only!



Programmes

For detailed overview of programmes → Page 7.
Spin speed can be selected individually.

Cottons/Coloureds ... hard-wearing textiles
Stains ... hard-wearing textiles
Mixed Fabrics ... different types of washing
Easy-Care ... easy-care textiles
Delicates ... delicate washable textiles
Wool/Handwash ... hand/machine-washable textiles
Empty ... the rinsing water if ⌀ occurs
Spin ... washing washed by hand
Rinse ... with subsequent spin cycle; for hand-washed items, starching or “freshen up” items, → Page 6.

* depending on model

Programme selector	Indicator lights / Spin speed*	Additional functions																					
	<table><tr><td>Status</td><td>○ 1400</td><td></td></tr><tr><td>○ End</td><td>○ 1200</td><td></td></tr><tr><td>○ Spin</td><td>○ 800</td><td></td></tr><tr><td>○ Rinse</td><td>○ 600</td><td></td></tr><tr><td>○ Wash</td><td>○ ⌀</td><td></td></tr></table>	Status	○ 1400		○ End	○ 1200		○ Spin	○ 800		○ Rinse	○ 600		○ Wash	○ ⌀		<table><tr><td>Intensive wash</td><td>○</td><td></td></tr><tr><td>Pre-wash</td><td>○</td><td></td></tr></table>	Intensive wash	○		Pre-wash	○	
Status	○ 1400																						
○ End	○ 1200																						
○ Spin	○ 800																						
○ Rinse	○ 600																						
○ Wash	○ ⌀																						
Intensive wash	○																						
Pre-wash	○																						
Symbols: ⌀ Rinse Hold (without final spin)																							

*Before washing for the first time,
wash once without any washing. See page 6*

Sorting and inserting the washing

Follow manufacturer's care information!
According to the information on the care labels.
According to type, colour, soiling and temperature.
Do not exceed maximum load -> page 7.

Follow important instructions! -> page 6!

Insert large and small items of washing! Close the washing machine door. Take care not to trap any items of clothing between the loading door and rubber seal.

Add detergent and care product

Meter accordingly:
Washing amount, soiling, water hardness (ask your water supply company) and manufacturer's instructions. Pour liquid detergent into the appropriate dispenser and place in the drum.

Dispenser I: Detergent for prewash

Dispenser ⌘: Fabric softener, starch

Dispenser II: Detergent for main wash, fabric softener, bleaching agent, stain remover

*Dilute viscous fabric softener and fabric conditioner with water.
Prevents blockage of the overflow.*

Set and adjust programme

*For additional functions and option buttons
see individual settings, -> page 5.*

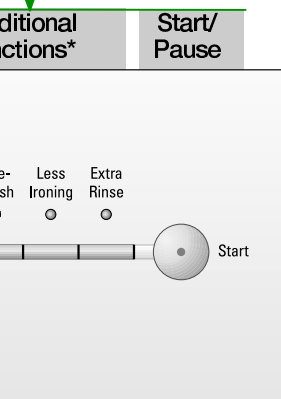


*All buttons are sensitive, they
only need to be touched gently!
If the Option buttons are touched
for longer, the setting options will
automatically run!*

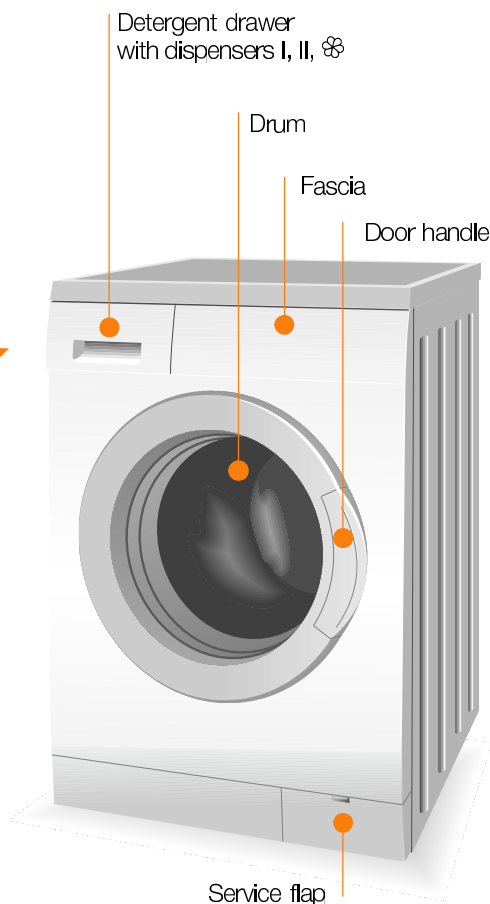
Select Start



*Programme selector for switching
the machine on and off and for
selecting the programme. Can be
rotated in either direction.*



Wash



Wash

Removing washing



Open washing machine door and remove washing.
Remove any foreign objects – risk of rusting.
Leave door and detergent drawer open so that residual water can evaporate.



Turn off the tap

Not required for Aqua-Stop models.



Switch off

Set programme selector to **Off**.

End of programme when ...

... Start flashes and **End** is lit on the indicator light.

If ⌘ (without final spin) active: Set programme selector to **Empty** or select spin speed. Select **Start**.

Change programme ...

If you have mistakenly selected a wrong programme:

- Reselect programme.
- Select **Start**.

... or terminate

Programmes with high temperature, first:

- Cool washing: Select **Rinse**.
Washing machine door remains locked.
- Select **Off**.
- Select **Spin** or **Empty**.
- Select **Start**.

Individual settings

Spin

The spin speed or Ø (without final spin) can be set before and while the selected programme is running. Effects dependent on the programme progress.
The maximum selectable spin speed depends on the model and the set programme.

Additional functions* see also programme overview (* depending on model)

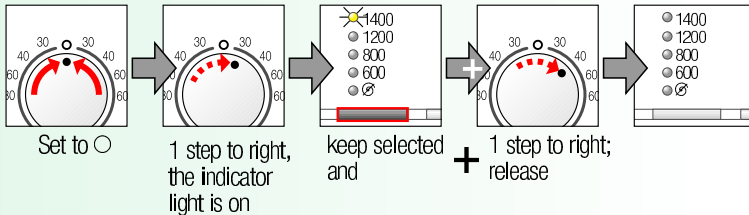
Intensive wash	Extension of the washing time for a more intensive washing of highly soiled washing or 7 kg of cottons and coloureds.
Prewash	For heavily soiled, hard-wearing washing, e.g. made of cotton or linen. Prewash at 30 °C.
Less Ironing	Special spin sequence with subsequent fluffing. Gentle final spin – residual moisture in the washing increased slightly.
Extra Rinse	Additional rinse cycle and extended washing time. For areas with very soft water or for further improvement of the rinsing result.

Start

For starting or interrupting the programme.

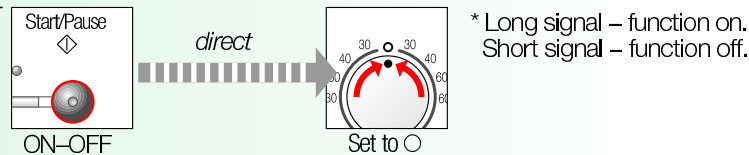
Signal

1. Activate setting mode for signal volume

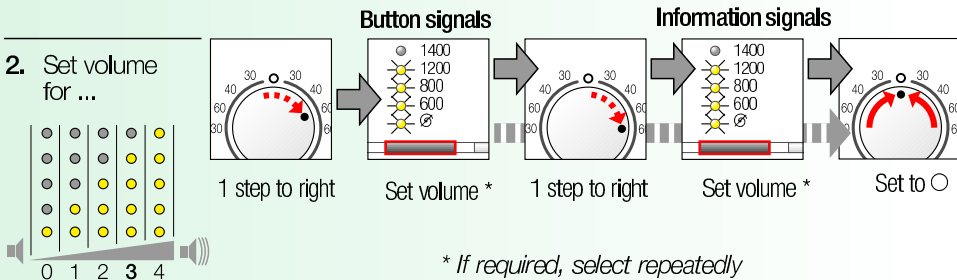


Optional:

Blind mode*
ON-OFF



- ## 2. Set volume for ...



Important information



Protecting the washing and the machine

- Empty pockets.
- Remove metal parts (paper clips, etc.).
- Wash delicates in the net/bag (tights, curtains, underwired bras).
- Close zips, button up covers.
- Brush sand out of pockets and collars.
- Remove curtain fittings or include in the net/bag.







Before washing for the first time

Do not put any washing in the washing machine! Turn on the tap, fill the appliance with approx. 1 litre of water and then pour ½ measuring cup of detergent into dispenser II. Set programme selector to **Easy-Care 60 °C** and select **Start**. At the end of the programme set the programme selector to **Off**.



Washing with different degrees of soiling

		Wash new items separately.
Light		Do not prewash.
		If required, pretreat stains. Select Intensive Wash additional function
Heavy		Load less washing.
		Prewash.




Soaking Load washing of the same colour

Pour soaking agent/detergent into dispenser II according to the manufacturer's instructions. Set programme selector to **Cottons/Coloured 30°C** and select **Start**. After approx. 10 minutes select **Start**. After the required soaking time reselect **Start** if the programme is to be continued or change the programme.



Starching *Washing should not be treated with fabric softener*

Liquid starch can be used in all wash programmes. Meter starch into the fabric softener dispenser  according to manufacturer's specifications.



Dyeing/Bleaching

Dye in small quantities only. Salt can corrode stainless steel.
Observe the dye manufacturer's specifications. Do **not** bleach laundry in the washing machine.



Freshen up Use programme **Rinse**

For items, that have been tucked away or stored for a period of time, to remove creases caused by folding and storage and to eliminate odours. Use fabric conditioner for “fresh” smell.



Protection of the environment/conservation tips

- Utilise the maximum amount of washing for the particular programme.
- Wash normally soiled washing without prewash.
- Instead of **Cottons/Coloureds 90 °C** select **Stains 60 °C** programme. Comparable cleaning result with significantly lower energy consumption.
- Meter detergent according to the manufacturer's instructions and water hardness.
- If the washing is then dried in the tumble dryer, select spin speed according to the instructions of the dryer manufacturer.

Programme overview -> Pay attention to the Consumption values table on page 8 and the information on page 6.

Programmes	°C	max.	Type of washing	Additional functions (depending on model); information
Cottons/Coloureds	30, 40, 60, 90 °C	7 kg*	Hard-wearing textiles, heat-resistant textiles made of cotton or linen	Intensive Wash, Prewash, Less Ironing, Extra Rinse
Stains	60 °C			
Easy-Care	30, 40, 60 °C	3 kg*	Easy-care textiles made of cotton, linen, synthetic fibres or blended fabrics	Intensive Wash, Prewash, Less Ironing, Extra Rinse; also suitable as Short programme
Mixed Fabrics	30 °C		Textiles made of cotton and easy-care textiles	Intensive Wash, Prewash, Less Ironing, Extra Rinse; Different types of washing can be washed together
Delicates	30 °C	2 kg	For delicate, washable textiles, e.g. made of silk, satin, synthetic fibres or blended fabrics (e.g. curtains)	Intensive Wash, Prewash, Less Ironing, Extra Rinse; no spin cycle between the rinse cycles
🧶 Wool/Handwash	cold, 30 °C		Hand or machine-washable wool or rich-wool textiles	Especially gentle wash programme to prevent shrinkage, prolonged programme pauses (textiles rest in the detergent solution).
Additional programmes			Rinse, Spin, Empty	

i The programmes are time-controlled for lightly soiled textiles. If textiles are heavily soiled, reduce the load or select additional functions, e.g. **Intensive Wash**.
When washing the maximum load for programmes marked with *, always select the **Intensive Wash** option.
Regardless of the type of washing, **Easy-Care 40 °C** with maximum spin speed is the best short programme for the job.
Programmes without prewash – pour detergent into dispenser II, programmes with prewash – divide detergent between dispensers I and II.

Siemens Electrogeräte GmbH
Carl-Wery-Str. 34
81739 München / Germany

WM14E162GB...

9000 376 488
0110

Safety instructions

- Read and follow the operating and installation instructions and all other information enclosed with the washing machine.
 - Retain documents for subsequent use.
- Risk of electric shock**
- Never pull out the mains plug by tugging the power cord!
 - Never insert/pull out the mains plug with damp hands.
- Risk of injury**
- Washing machine door may become very hot.
 - Caution when draining hot detergent solution.
 - Do not climb on the washing machine.
 - Do not lean on the open washing machine door.
 - Do not touch the drum in case it is still spinning.
 - Caution when opening the detergent drawer while washing machine is running!
- Risk of poisoning**
- Risk of suffocation**
- Keep detergents and care products out of the reach of children.
 - Keep packaging, plastic film and packaging parts out of the reach of children.
- Danger to life**
- On redundant appliances:
- Pull out the mains plug.
 - Sever the power cord and discard together with the plug.
- Risk of explosion**
- Destroy the lock on the washing machine door. This will prevent children from locking themselves in and suffocating.
 - Caused by detergents containing solvents, e.g. stain remover/items of washing pretreated with solvent naphtha may result in an explosion after being loaded into the washing machine. Beforehand thoroughly rinse items of washing by hand.

Consumption values

Programme	Additional function	Load	Current **	Water **	Programme duration **
Cottons/Coloureds 40 °C *	Intensive Wash	7 kg	0.65 kWh	60 l	2:30 h
Stains 60 °C*	Intensive Wash	7 kg	1.19 kWh	49 l	2:36 h
Cottons/Coloureds 90 °C	Intensive Wash	7 kg	2.00 kWh	75 l	2:33 h
Easy-Care 40 °C *	Intensive Wash	3 kg	0.55 kWh	50 l	1:24 h
Easy-Care 40 °C * (also suitable as Short programme)	–	3 kg	0.54 kWh	40 l	0:55 h
Mixed Fabrics 30 °C	–	3 kg	0.32 kWh	35 l	0:44 h
Delicates 30 °C	–	2 kg	0.25 kWh	38 l	0:32 h
Wool/Handwash 🧶 30 °C *		2 kg	0.15 kWh	34 l	0:40 h

* Programme setting to be tested in accordance with European standard 60 456.
Note on comparative tests: test the test programme with maximum load, **Intensive Wash** option selected, maximum spin speed.
A **short programme** which can be used for coloured items is **Easy-Care 40 °C**, without the **Intensive Wash** option selected and set to maximum spin speed.

** The values deviate from the indicated values depending on water pressure, water hardness, water inlet temperature, room temperature, type and amount of washing and degree of soiling, utilised detergent, fluctuations in the mains voltage and selected additional functions.

Care



- Risk of electric shock! Pull out the mains plug!
- Risk of explosion! No solvents!



Machine housing, control panel

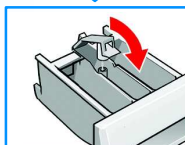
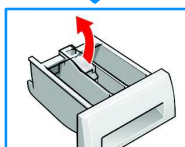
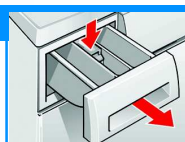
- Wipe with a soft, damp cloth.
- Do not use any abrasive cloths, sponges or cleaning agents (stainless-steel cleaner).
- Immediately remove washing and cleaning agent residue.
- Do not clean the appliance with a water jet.



Clean the detergent drawer ...

... if it contains detergent or fabric softener residue.

1. Pull out, depress insert, completely remove.
2. Open the cover.
3. Clean with water and dry.
4. Close and lock the cover (place cylinder on guide pin).
5. Insert detergent drawer.



Leave detergent drawer open so that residual water can evaporate.



Drum

Leave washing machine door open so that the drum can dry out.
Rust stains – use chlorine-free cleaning agent, not steel wool.



Descaling No washing in the machine!

Descale according to the instructions of the descaling agent-manufacturer, not required for correct detergent dosage.

Information on the display panel depending on model

A signal sounds and indicator lights for the spin speed flash:

- | | | |
|---|--|---|
| Close the washing machine door properly; washing may be caught. | Detergent solution pump blocked;
Clean the detergent solution pump
-> page 10.
Drainage hose / waste pipe blocked;
Clean the drainage hose at the siphon -> Page 10. | Turn the tap on fully,
supply hose kinked/
jammed;
clean filter -> page 10,
water pressure too low. |
| Motor fault!
Call customer service! | Water in the base pan, appliance leaking. Call customer service! | |

Maintenance



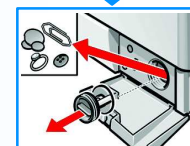
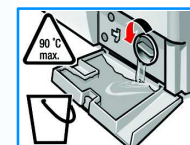
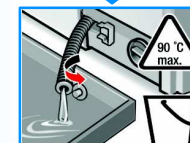
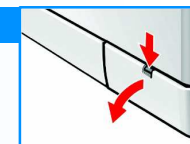
- Risk of scalding! Allow detergent solution to cool down!
- Turn off the tap!



Detergent-solution pump

Set programme selector to **Off**, pull out the mains plug.

1. Open and remove service flap.
2. For models with drainage hose:
Take drainage hose out of the holder and pull out of the housing. Remove sealing cap, allow detergent solution to flow out. Press on sealing cap and insert drainage hose into the holder.
- For models without drainage hose:
- 2* Carefully unscrew pump cover until the detergent solution begins to run out. When the service flap is half full, screw back the pump cover and empty the service flap. Repeat steps until all the detergent solution has run out.
3. Carefully unscrew the pump cover (residual water).
4. Clean the interior, pump cover thread and pump housing (fan impeller in the detergent-solution pump must rotate).
5. Reinsert and screw on pump cover.
6. Insert and close service flap.



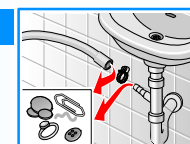
To prevent unused detergent from flowing into the outlet during the next wash: Pour 1 litre of water into dispenser II and select the **Empty** programme.



Drainage hose at the siphon

Set the programme selector to **Off**, disconnect the mains plug.

1. Loosen the hose clamp, carefully remove the drainage hose (residual water).
2. Clean the drainage hose and siphon connecting piece.
3. Reattach the drainage hose and secure the connection with the hose clamp.



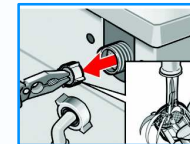
Filters in the water supply



Risk of electric shock! Do not immerse Aqua-Stop safety device in water (contains electric valve).

Release water pressure in the supply hose:

1. Turn off the tap!
2. Select any programme (except **Spin/Empty**).
3. Press **Start**. Leave programme for approx. 40 seconds.
4. Set programme selector to **Off**.
5. Remove hose from tap.
6. Clean filter with small brush.
7. Depending on the model, remove hose from the rear of the appliance and clean the filter.
8. Connect the hose and check for leaks.

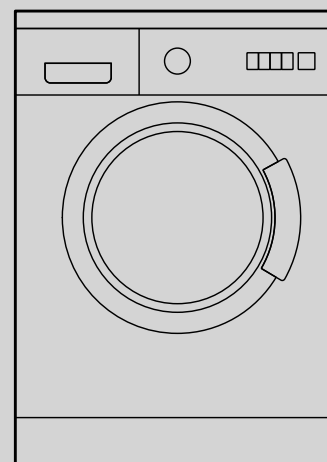


What to do if ...

- Water is running out.
 - Correctly attach/replace drainage hose.
 - Tighten screw-fitting on the supply hose.
- Water not flowing in.
Detergent not washed in.
 - **Start** not selected?
 - Tap not open?
 - Filter blocked? Clean filter → *page 10*.
 - Supply hose kinked or jammed?
- Washing machine door cannot be opened.
 - Safety function active, wait for approx. 2 minutes.
 - Ø (without final spin) selected?
- Programme does not start.
 - **Start** selected?
 - Door closed?
- Detergent solution is not drained.
 - Clean detergent-solution pump → *page 10*.
 - Clean outlet pipe and/or drainage hose.
- Washing not spun correctly.
 - Distribute small and large items of washing in the drum.
- Spin cycle actuated several times.
 - Not a fault – unbalanced load detection system adjusts imbalance.
- Water not visible in the drum.
 - Not a fault – water below the visible area.
- Residual water in the dispenser for care product.
 - Not a fault – effect of the care product not impaired.
- Odour formation in the washing machine.
 - Run **Cottons/Coloureds 90 °C** programme without washing. Use standard detergent.
- Foam is coming out of the detergent drawer.
 - Too much detergent used?
Mix 1 tablespoon of fabric softener with ½ litre of water and pour into compartment II (*not with outdoor fabrics!*).
 - Reduce detergent dosage for the next wash cycle.
- Vibrations during spin cycle.
 - Appliance feet fixed?
Secure appliance feet (*Installation instructions*).
 - Transportation safety devices removed?
Remove transportation safety devices (*Installation instructions*).
- Spin result not satisfactory.
 - **Less Ironing*** selected? → *page 5* (* depending on model)
- Display panel/indicator lights do not function while the appliance is running.
 - Power failure?
 - Fuse tripped? Switch on/replace fuse.
 - If the fault occurs repeatedly, call customer service.
- Programme progress longer than usual.
 - Not a fault – unbalanced load detection system adjusts imbalance by repeatedly distributing the washing.
 - Not a fault – Foam detection system active – a rinse cycle is started.
- Detergent residue on the washing.
 - Occasionally phosphate-free detergents contain water-insoluble residue.
 - Select **Rinse** or brush the laundry after washing.
- If a fault cannot be rectified or a repair is required:
 - Set programme selector to **Off** and pull out the mains plug.
 - Turn off the tap and call customer service (*Installation instructions*).

SIEMENS

Operating instructions



Washing machine

en



Read these instructions before switching on the washing machine!
Also follow the separate Installation instructions.
Follow the safety instructions on page 8!