

Your washing machine

Congratulations – You have opted for a modern, high-quality domestic appliance manufactured by Siemens. The washing machine is distinguished by its economical use of water and energy. Each appliance which leaves our factory is inspected thoroughly to ensure that it functions properly and is in perfect condition. For further information and a selection of our products go to our web site: <http://www.siemens-international.com> or contact our customer service centres

Contents

	Page
■ Intended use	1
■ Programmes	1
■ Set and adjust programme	3
■ Washing	3/4
■ After washing	4
■ Individual settings	5
■ Important information	6
■ Overview of programmes	7
■ Safety instructions	8
■ Consumption values	8
■ Care	9
■ Information on the display panel	9
■ Maintenance	10
■ What to do if ...	11

Protection of the environment/ Conservation tips

- Utilise the maximum amount of washing for the particular programme.
- Wash normally soiled washing without prewash.
- Instead of **Cottons/Coloureds 90 °C** programme, select **Eco 60 °C** and additional function **Intensive Wash**. Comparable cleaning result with significantly lower energy consumption.
- Meter detergent according to the manufacturer's instructions and water hardness.
- If the washing is then dried in the tumble dryer, select spin speed according to the instructions of the dryer manufacturer.

Intended use

- for use in the household only,
- for the washing of machine-washable textiles in a detergent solution,
- to be operated with cold drinking water and commercially available detergents and care products which are suitable for use in washing machines.

- Do not leave children unattended near the washing machine!
- Keep pets away from the washing machine!

Programmes

Detailed programme overview → Page 7. Temperature and spin speed can be selected individually, irrespective of the selected programme and programme progress.

Cottons/Coloureds	Hard-wearing textiles
Eco	Hard-wearing textiles
Mixed Fabrics	different types of washing
Rapid 15'	short programme; also suitable as a rinse programme
Spin	extra spin with selectable spin speed
Empty	the rinsing water with ∅ (Rinse stop = without final spin)
Wool	hand-/machine-washable wool
Delicates/Silk	delicate washable textiles
Easy-Care	easy care textiles

Preparation

Correct installation according to separate *Installation instructions*.

Checking the machine

- Never switch on a damaged machine!
- Inform your customer service!

Insert mains plug

With dry hands only!
Take hold of the plug only!

Turn on the tap

Sorting and inserting the washing

Follow manufacturer's care information! According to the information on the care labels. According to type; colour; soiling and temperature. Do not exceed maximum load → Page 7.

Follow Important instructions → Page 6!

Insert large and small items of washing! Close the washing machine door. Take care not to trap any items of clothing between the loading door and rubber seal.

Add detergent and care product

Meter accordingly: Washing amount, soiling, water hardness (ask your water supply company) and manufacturer's instructions. Models without insert for liquid detergent: Pour liquid detergent into the appropriate dispenser and place in the drum. During operation: Caution when opening the detergent drawer!

Insert for liquid detergent (depending on model), Page 6.
Compartment II: Detergent for the main wash, water softener, bleach, stain remover
Compartment I: Detergent for prewash
Dispenser I: Detergent for prewash

Dilute viscous fabric softener and fabric conditioner with water. This prevents blockages.

Before washing for the first time,

wash once without any washing → Page 6.

Set and adjust programme

For additional functions and option button see individual settings → Page 5.

Programme selector

Easy-Care Off Cottons/Coloureds °C
Delicates/Silk 30 Cold 30 Spin
Wool 30 Empty Rapid 15'

Display panel/ Option button

Status → h:min
Finish in

Spin speed

1600 1200 800 400 ∅

Additional functions

Intensive Wash Pre-wash Less Ironing Extra Rinse

Start/ Pause

Start/Pause

Programme selector for switching the machine on and off and for selecting the programme. Can be rotated in either direction.

1 – 24h	Programme ends in ...
Status displays	Programme progress displays: Washing, Rinse, Spin, End

 All buttons are sensitive and a gentle tap is adequate! If the option button is touched for longer, the setting options run automatically!

Washing

Removing washing

Open washing machine door and remove washing. If ∅ (Rinse stop = without final spin) is active: Select the spin speed or set programme selector to **Empty** or **Spin**. Select **Start/Pause**. Remove any foreign objects – risk of rusting.

Turn off tap

Information on Aqua Stop → *Installation instructions* → Page 7.

Switch off

Set programme selector to **Off**.

End of programme when ...

... **Start/Pause** flashes.

Change programme ...

If you have mistakenly selected a wrong programme:
– Reselect programme.
– Select **Start/Pause**.

Cancel programme ...

– Select **Start/Pause**.
– If required, top up the washing (do not leave the door open for too long as water from the washing could run out of the open door)
– Select **Start/Pause**.

... or terminate

Programmes with high temperature:
– Cool washing: Select **Rapid 15'**.
– Select **Start/Pause**.
Programmes at lower temperature:
– Select **Spin** or **Empty**.
– Select **Start/Pause**.

Individual settings

Option button Finish in (→ h:min)

The respective programme duration is displayed by selecting the programme. The programme start can be delayed before the programme begins. The **Finish in**-time can be set in hour-steps up to maximum 24h. Keep pressing the **Finish in** button until the required number of hours is indicated (h=hour). Select **Start/Pause**.

Spin speed

The spin speed or ∅ (without final spin) can be set before and while the selected programme is running. The maximum selectable spin speed depends on the model and the set programme. Effects dependent on the programme progress.

Additional functions

see also *programme overview*

Intensive Wash	Extend the washing time for a more intensive washing of heavily soiled items.
Prewash	For heavily soiled washing. Prewash at max. 30 °C.
Less Ironing	Special spin sequence with subsequent fluffing. Gentle final spin – residual moisture in the washing increased slightly.
Extra Rinse	Additional rinse cycle, extended washing time. For areas with very soft water or for further improvement of the rinsing result.

Start/Pause

For starting or interrupting the programme.

Signal

1. Start signal mode

Set to ∅ 1 step to right keep selected and + 1 step to right release

2. Set volume for ...

1 step to right Set volume * 1 step to right Set volume * Set to ∅

* If required, select repeatedly

Important information

Protecting the washing and the machine

- Empty pockets.
- Remove metal parts (paper clips, etc.).
- Wash delicates in the net/bag (tights, curtains, underwired bras).
- Close zips, button up covers.
- Brush sand out of pockets and collars.
- Remove curtain fittings or include in the net/bag.

Before washing for the first time,

Do not put any washing in the washing machine! Turn on the tap, fill approx. 1 litre of water and then pour ½ measuring cup of detergent into dispenser II. Set the **Easy-Care 60 °C** programme and select **Start/Pause**. At the end of the programme set the programme selector to **Off**.

Washing with different degrees of soiling

Light	Wash new items separately. Do not prewash.
heavy	If required, pretreat stains. Select Intensive Wash additional function. Load less washing. Prewash. If required, pretreat stains. Select Intensive Wash additional function.

Soaking

Load washing of the same colour

Pour soaking agent/detergent into dispenser II according to the manufacturer's instructions. Set **Cottons/Coloureds 30 °C** programme and select **Start/Pause**. After approx. 10 minutes select **Start/Pause**. After the required soaking time reselect **Start/Pause**, if the programme is to be continued or change the programme.

Starching

Washing should not be treated with fabric softener

Starching is possible in all wash programmes if liquid starch is used. Add starch to the fabric softener compartment ∅ in accordance with the manufacturer's instructions.

Dyeing/Bleaching

Dye in small quantities only. Salt can corrode stainless steel. Observe the dye manufacturer's specifications. Do **not** bleach laundry in the washing machine.

Insert for liquid detergent

Position insert for dispensing liquid detergent:
– Completely remove the detergent drawer → Page 9.
– Push insert forwards.

Do not use insert (push up):
– for gelatinous detergents and washing powders;
– for programmes with **Prewash** and **Finish in** option.

Emergency release, e.g. in the event of a power failure

The programme continues to run when the power has been restored. However, if the laundry has to be removed, the washing machine door can be opened as follows:

Risk of scalding.
The detergent solution and laundry may be hot. If possible, leave it to cool down. Do not reach into the drum if it is still rotating. Do not open the washing machine door if water can be seen through the glass.

- Set the programme selector to **Off** and disconnect the mains plug.
- Drain the detergent solution → Page 10.
- Pull the emergency release with a tool and release. The washing machine door can then be opened.

*Before washing for the first time,
wash once without any washing -> Page 6.*

Sorting and inserting the washing

Follow manufacturer's care information!
According to the information on the care labels.
According to type; colour; soiling and temperature.
Do not exceed maximum load -> Page 7.

Follow Important instructions -> Page 6!

Insert large and small items of washing! Close the washing machine door. Take care not to trap any items of clothing between the loading door and rubber seal.

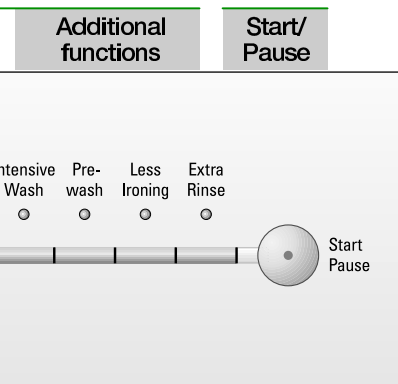
Add detergent and care product

Meter accordingly:
Washing amount, soiling, water hardness (ask your water supply company) and manufacturer's instructions.
Models without insert for liquid detergent: Pour liquid detergent into the appropriate dispenser and place in the drum.
During operation: Caution when opening the detergent drawer!

i Dilute viscous fabric softener and fabric conditioner with water. This prevents blockages.

Set and adjust programme

For additional functions and option button see individual settings -> Page 5.



Select Start/Pause

i All buttons are sensitive and a gentle tap is adequate! If the option button is touched for longer, the setting options run automatically!

Washing

Detergent drawer with compartments I, II, ⌀

Washing machine door

Control panel

Door handle

Service flap

Washing

Removing washing

Open washing machine door and remove washing.
If ⌀ (Rinse stop = without final spin) is active:
Select the spin speed or set programme selector to **Empty** or **Spin**. Select **Start/Pause**.
Remove any foreign objects – risk of rusting.

Turn off tap

Information on Aqua Stop
-> Installation instructions -> Page 7.

Switch off

Set programme selector to **Off**.

End of programme when ...

... **Start/Pause** flashes.

Change programme ...

If you have mistakenly selected a wrong programme:
– Reselect programme.
– Select **Start/Pause**.

Cancel programme ...

– Select **Start/Pause**.
– If required, top up the washing (do not leave the door open for too long as water from the washing could run out of the open door)
– Select **Start/Pause**.

... or terminate

Programmes with high temperature:

– Cool washing: Select **Rapid 15'**.
– Select **Start/Pause**.

Programmes at lower temperature:

– Select **Spin** or **Empty**.
– Select **Start/Pause**.

Individual settings

Option button Finish in (→ h:min)

The respective programme duration is displayed by selecting the programme. The programme start can be delayed before the programme begins. The **Finish in**-time can be set in hour-steps up to maximum 24h. Keep pressing the **Finish in** button until the required number of hours is indicated (h=hour). Select **Start/Pause**.

Spin speed

The spin speed or ∅ (without final spin) can be set before and while the selected programme is running. The maximum selectable spin speed depends on the model and the set programme. Effects dependent on the programme progress.

Additional functions *see also programme overview*

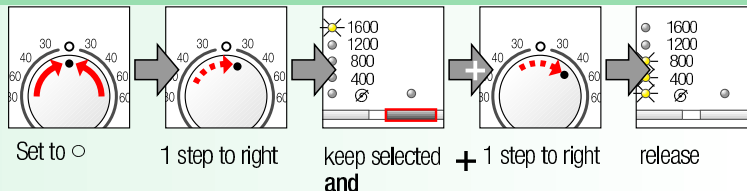
Intensive Wash	Extend the washing time for a more intensive washing of heavily soiled items.
Prewash	For heavily soiled washing. Prewash at max. 30 °C.
Less Ironing	Special spin sequence with subsequent fluffing. Gentle final spin – residual moisture in the washing increased slightly.
Extra Rinse	Additional rinse cycle, extended washing time. For areas with very soft water or for further improvement of the rinsing result.

Start/Pause

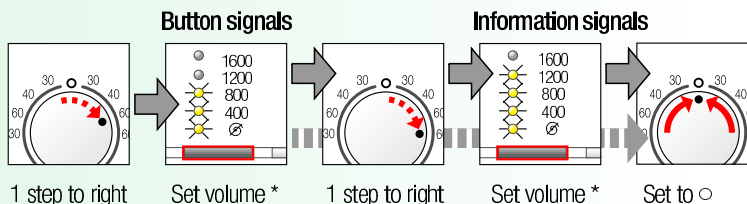
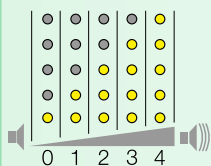
For starting or interrupting the programme.

Signal

1. Start signal mode



2. Set volume for ...



* If required, select repeatedly



Important information



Protecting the washing and the machine

- Empty pockets.
- Remove metal parts (paper clips, etc.).
- Wash delicates in the net/bag (tights, curtains, underwired bras).
- Close zips, button up covers.
- Brush sand out of pockets and collars.
- Remove curtain fittings or include in the net/bag.



Before washing for the first time,

Do not put any washing in the washing machine! Turn on the tap, fill approx. 1 litre of water and then pour ½ measuring cup of detergent into dispenser II. Set the **Easy-Care 60 °C** programme and select **Start/Pause**. At the end of the programme set the programme selector to **Off**.



Washing with different degrees of soiling

Light	Wash new items separately. Do not prewash. If required, pretreat stains. Select Intensive Wash additional function.
heavy	Load less washing. Prewash. If required, pretreat stains. Select Intensive Wash additional function.



Soaking *Load washing of the same colour*

Pour soaking agent/detergent into dispenser II according to the manufacturer's instructions. Set **Cottons/Coloureds 30 °C** programme and select **Start/Pause**. After approx. 10 minutes select **Start/Pause**. After the required soaking time reselect **Start/Pause**, if the programme is to be continued or change the programme.



Starching *Washing should not be treated with fabric softener*

Starching is possible in all wash programmes if liquid starch is used. Add starch to the fabric softener compartment ∅ in accordance with the manufacturer's instructions.

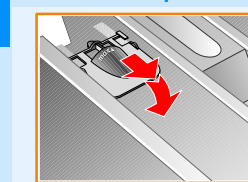


Dyeing/Bleaching

Dye in small quantities only. Salt can corrode stainless steel. Observe the dye manufacturer's specifications. Do **not** bleach laundry in the washing machine.



Insert for liquid detergent *depending on model*



Position insert for dispensing liquid detergent:

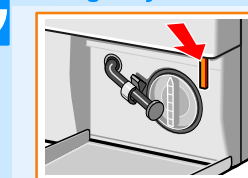
- Completely remove the detergent drawer → Page 9.
- Push insert forwards.

Do not use insert (push up):

- for gelatinous detergents and washing powders;
- for programmes with **Prewash** and **Finish in** option.



Emergency release, e.g. in the event of a power failure



The programme continues to run when the power has been restored. However, if the laundry has to be removed, the washing machine door can be opened as follows:



Risk of scalding.

The detergent solution and laundry may be hot.

If possible, leave it to cool down.

Do not reach into the drum if it is still rotating.

Do not open the washing machine door if water can be seen through the glass.

- Set the programme selector to **Off** and disconnect the mains plug.
- Drain the detergent solution → Page 10.
- Pull the emergency release with a tool and release. The washing machine door can then be opened.

Programme overview

→ Pay attention to the Consumption values table on page 8 and the information on page 6.

Programmes	°C	max.	Type of washing	Additional functions; information
Cottons/Coloureds	30, 40, 60, 90 °C			
Eco	60 °C	8,0 kg*	Hard-wearing textiles, heat-resistant textiles made of cotton or linen	Intensive Wash, Prewash, Less Ironing, Extra Rinse
Easy-Care	30, 40, 60 °C	3,5 kg*	Easy-care textiles made of cotton, linen, synthetic fibres or blended fabrics	Intensive Wash, Prewash, Less Ironing, Extra Rinse
Mixed Fabrics	30 °C		Textiles made of cotton and easy-care textiles	Intensive Wash, Prewash, Less Ironing, Extra Rinse; different types of washing can be washed together
Delicates/Silk	30 °C		For delicate, washable textiles, eg. made of silk, satin, synthetic fibres or blended fabrics	Intensive Wash, Prewash, Less Ironing, Extra Rinse; only short spin between the rinse cycles
Rapid 15'	30 °C	2,0 kg	Easy-care textiles made of cotton, linen, synthetic fibres or blended fabrics	Short programme approx. 15 minutes; suitable for washing lightly soiled items and for thorough rinsing (do not add any detergent)
Wool	Cold, 30 °C		Hand or machine washable wool or rich-wool textiles	Especially gentle wash programme to prevent shrinkage, prolonged programme pauses (textiles rest in the detergent solution).
Additional programmes			Spin, Empty	

i The programmes are time-controlled for lightly soiled textiles. If textiles are heavily soiled, reduce the load or select additional functions, e.g. **Intensive Wash**. Always select the additional **Intensive Wash** function when washing the maximum load with programmes marked with *. Regardless of the type of washing, **Easy-Care 40 °C** with maximum spin speed is the best short programme for the job. Programmes without prewash – pour detergent into dispenser II, programmes with prewash – divide detergent between dispensers I and II.

Siemens-Electrogeräte GmbH
Carl-Wery-Str. 34
81739 München/Germany

WM16S383GB
WM14S383GB
WM12S383GB

9000 376 426
0109

Safety instructions

- Read and follow the operating and installation instructions and all other information enclosed with the washing machine.
 - Retain documents for subsequent use.
- Risk of electric shock**
- Never pull out the mains plug by tugging the power cord!
 - Never insert/pull out the mains plug with damp hands.
- Danger to life**
- Redundant appliances:
- Pull out the mains plug.
 - Sever the power cord and discard together with the plug.
 - Destroy the lock on the washing machine door.
- This will prevent children from locking themselves in and suffocating.
- Risk of suffocation**
- Keep packaging, plastic film and packaging parts out of the reach of children.
- Risk of poisoning**
- Keep detergents and care products out of the reach of children.
- Risk of explosion**
- Caused by detergents containing solvents, e.g. stain remover/items of washing pretreated with solvent naphtha may result in an explosion after being loaded into the washing machine. Before hand thoroughly rinse items of washing by hand.
- Risk of injury**
- Washing machine door may become very hot.
 - Caution when draining hot detergent solution.
 - Do not climb on the washing machine.
 - Do not lean on the open washing machine door.
 - Do not touch the drum in case it is still spinning.

Consumption values

Programme	Additional function	Load	Current**	Water**	Programme duration**
Cottons/Coloureds 30 °C*	Intensive Wash	8,0 kg	0,61 kWh	80 l	2:12 h
Cottons/Coloureds 40 °C*	Intensive Wash	8,0 kg	0,94 kWh	80 l	2:12 h
Cottons/Coloureds 60 °C*	Intensive Wash	8,0 kg	1,65 kWh	80 l	2:12 h
Coloureds eco 60 °C*	Intensive Wash	8,0 kg	1,20 kWh	56 l	3:25 h
Cottons/Coloureds 90 °C	Intensive Wash	8,0 kg	2,73 kWh	97 l	2:12 h
Easy-Care 40 °C*	Intensive Wash	3,5 kg	0,55 kWh	53 l	1:12 h
Easy-Care 40 °C* (also suitable as Short programme)	–	3,5 kg	0,54 kWh	53 l	0:45 h
Delicate/Silk 30 °C	–	2,0 kg	0,20 kWh	39 l	0:40 h
Wool Cold	–	2,0 kg	0,08 kWh	40 l	0:36 h
Wool 30 °C	–	2,0 kg	0,20 kWh	40 l	0:36 h

- * Programme setting to be tested in accordance with European standard 60 456.
- Note on comparative tests: test the test programme with maximum load, **Intensive Wash** option selected, maximum spin speed.
- A **short programme** which can be used for coloured items is **Easy-Care 40 °C**, without the **Intensive Wash** option selected and set to maximum spin speed.
- ** The values deviate from the indicated values depending on water pressure, water hardness, water inlet temperature, room temperature, type and amount of washing and degree of soiling, utilised detergent, fluctuations in the mains voltage and selected additional functions.

Care



- Risk of electric shock! Pull out the mains plug!
- Risk of explosion! No solvents!



Machine housing, control panel

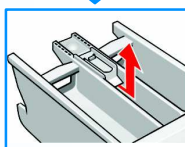
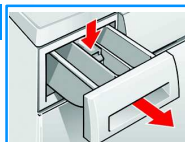
- Wipe with a soft, damp cloth.
- Do not use any abrasive cloths, sponges or cleaning agents (stainless-steel cleaner).
- Immediately remove washing and cleaning agent residue.
- Do not clean the appliance with a water jet.



Clean the detergent drawer ...

... if it contains detergent or fabric softener residue.

1. Pull out, depress insert, completely remove. Remove insert: Press insert upwards with finger.
2. Clean detergent dispenser and insert with water and a brush and dry.
3. Attach insert and engage (connect cylinder to guide pin).
4. Insert detergent drawer.



Leave detergent drawer open so that residual water can evaporate.



Drum

Leave washing machine door open so that the drum can dry out.
Rust stains – use chlorine-free cleaning agent, not steel wool.



Descaling No washing in the machine!

Not necessary if detergent dispensed correctly. However, follow the instructions of the descaler manufacturer.

Information on the display panel depending on model

F: 16	Close the washing machine door properly; washing may be caught.
F: 17, 29	Turn the tap on fully, supply hose kinked/jammed; Clean filter → Page 10; water pressure too low.
F: 18	Detergent solution pump blocked; Clean the detergent solution pump → Page 10. Drainage hose / waste pipe blocked; Clean the drainage hose at the siphon → Page 10.
F: 23	Water in the base pan, appliance leaking. Call customer service!
F: 34, 61	Door cannot be locked. Open door and close it with an audible “click”; switch appliance off and on again; set programme and select individual settings; start programme.
F: 42, 43, 44	Motor fault. Call customer service! → Installation instructions, Page 7.
Other displays	Switch off the appliance, wait for 5 seconds and switch it back on. If the display appears again, call customer services → Installation instructions, Page 7.

Maintenance



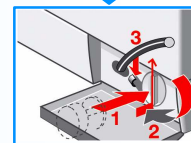
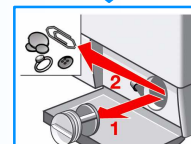
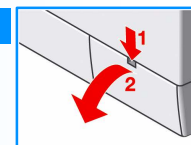
- Risk of scalding! Allow detergent solution to cool down!
- Turn off the tap!



Detergent solution pump

Set programme selector to **Off**, pull out the mains plug.

1. Open and remove service flap.
2. Take the drainage hose out of the holder. Remove sealing cap, allow detergent solution to flow out. Put the closing cap back on the hose.
3. Carefully unscrew the pump cover (residual water).
4. Clean the interior, pump cover thread and pump housing (fan impeller in the detergent solution pump must rotate).
5. Re-insert pump cover and screw on tight, handle is upright. Insert the drain hose into the holder.
6. Insert and close service flap.



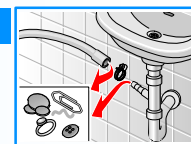
To prevent unused detergent from flowing into the outlet during the next wash: Pour 1 litre of water into dispenser II and start the **Empty** programme.



Drainage hose at the siphon

Set the programme selector to **Off**, disconnect the mains plug.

1. Loosen the hose clamp, carefully remove the drainage hose (residual water).
2. Clean the drainage hose and siphon connecting piece.
3. Reattach the drainage hose and secure the connection with the hose clamp.



Filter in the water inlet hose



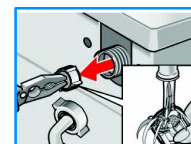
Risk of electric shock! Do not immerse Aqua-Stop safety device in water (contains electric valve).

Release water pressure in the supply hose:

1. Turn off the tap!
2. Select any programme (**except** Spin/Empty).
3. Select **Start/Pause**. Leave programme for approx. 40 seconds.
4. Set programme selector to **Off**. Pull out the mains plug.

Clean filter:

1. Depending on model:
 - Remove hose from tap. Clean filter with small brush.
 - or
 - Remove hose from the rear. Remove filter with pliers and clean.
2. Connect the hose and check for leaks.

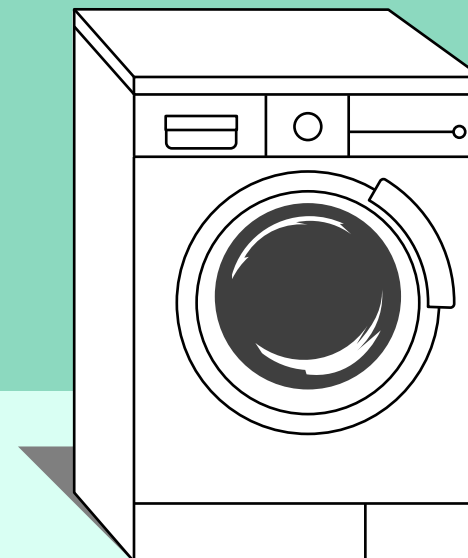


What to do if ...

Water is running out.	<ul style="list-style-type: none"> – Correctly attach/replace drainage hose. – Tighten screw-fitting on the supply hose.
Water not flowing in. Detergent not washed in.	<ul style="list-style-type: none"> – Start/Pause not selected? – Tap not open? – Filter blocked? Clean filter → Page 10. – Supply hose kinked or jammed?
Washing machine door cannot be opened.	<ul style="list-style-type: none"> – Safety function active. Programme stopped? → Page 4. – ⌀ (Rinse stop = without final spin) selected? → Page 4. – Can be opened via emergency release only → Page 6.
Programme does not start.	<ul style="list-style-type: none"> – Start/Pause or → Finish in selected? – Washing machine door closed?
Detergent solution is not drained.	<ul style="list-style-type: none"> – Clean detergent solution pump → Page 10. – Clean outlet pipe and/or drainage hose.
Water not visible in the drum.	<ul style="list-style-type: none"> – Not a fault – water below the visible area.
Spin result not satisfactory.	<ul style="list-style-type: none"> – Wash small and large items of washing together. – Less Ironing selected? → Page 5. – Too low speed selected? → Page 3.
Spin cycle actuated several times.	<ul style="list-style-type: none"> – Not a fault – unbalanced load detection system adjusts imbalance.
Dispenser ⌀ not completely rinsed out.	<ul style="list-style-type: none"> – Remove the insert. Clean detergent drawer and insert → Page 9.
Odour formation in the washing machine.	<ul style="list-style-type: none"> – Run Cottons/Coloureds 90 °C programme without washing. Use standard detergent.
Foam is coming out of the detergent drawer.	<ul style="list-style-type: none"> – Too much detergent used? – Mix 1 tablespoon of fabric softener with ½ litre of water and pour into compartment II (not with outdoor fabrics!). – Reduce detergent dosage for the next wash cycle.
Intense noise formation, vibrations and "wandering" during spin cycle.	<ul style="list-style-type: none"> – Appliance feet fixed? – Secure appliance feet → <i>Installation instructions, Page 5.</i> – Transportation safety devices removed? – Remove transportation protection devices → <i>Installation instructions, Page 3.</i>
Display panel/indicator lights do not function while the appliance is running.	<ul style="list-style-type: none"> – Power failure? – Fuse tripped? Switch on/replace fuse. – If the fault occurs repeatedly, call customer service.
Programme progress longer than usual.	<ul style="list-style-type: none"> – Not a fault – unbalanced load detection system adjusts imbalance by repeatedly distributing the washing. – Not a fault – foam detection system active – a rinse cycle is started.
Detergent residue on the washing.	<ul style="list-style-type: none"> – Occasionally phosphate-free detergents contain water-insoluble residue. – Select Rapid 15' or brush the laundry after washing.
In the pause state Start/Pause flashes very quickly and a signal sounds.	<ul style="list-style-type: none"> – Water level too high. Top up washing is not possible. If required, close door immediately. – Select "Start/Pause" to continue the programme.
If a fault cannot be rectified or a repair is required:	<ul style="list-style-type: none"> – Set programme selector to Off and pull out the mains plug. – Turn off tap and call customer service → <i>Installation instructions, Page 7.</i>



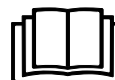
Follow the safety instructions on page 8!



Washing machine

Operating instructions

en



Do not switch on the washing machine until you have read these instructions and the separate installation instructions!

SIEMENS