

Your washing machine

Congratulations – You have opted for a modern, high-quality domestic appliance manufactured by Siemens. The washing machine is distinguished by its economical water and energy consumption.

Each appliance which leaves our factory is inspected thoroughly to ensure that it functions properly and is in perfect condition.

For further information and a selection of our products go to our web site: <http://www.siemens-international.com> or contact our customer service centres

Contents

	Page
■ Intended use	1
■ Programmes	1
■ Setting the programme	3
■ Washing	3/4
■ After washing	4
■ Individual settings	5
■ Select stain	6
■ Overview of programmes	7
■ Safety instructions	8
■ Consumption values	8
■ Important information	9
■ Care	10
■ Information on the display panel	10
■ Maintenance	11
■ What to do if ...	12/13
■ Emergency release	13
■ Customer service	13

Protection of the environment/Conservation tips

- Utilise the maximum amount of washing for the particular programme.
- Wash normally soiled washing without prewash.
- Instead of **Cottons/Coloureds 90 °C** programme, select **Coloureds eco 60 °C** and option **soiling intense** ☞. Comparable cleaning result with significantly lower energy consumption.
- Meter detergent according to the manufacturer's instructions and water hardness.
- If the washing is then dried in the tumble dryer, select spin speed according to the instructions of the dryer manufacturer.

Automatic stain removal

Automatic treatment of 16 different types of stains possible. No pretreatment of stains required – washing machine automatically adjusts itself to the washing process → Page 6.

Intended use

- for use in the household only,
- for the washing of machine washable textiles in a detergent solution,
- to be operated with cold drinking water and commercially available detergents and care products which are suitable for use in washing machines.

- ⚠ – Do not leave children unattended near the washing machine!
- Keep pets away from the washing machine!

Programmes

Detailed programme overview → Page 7. Temperature and spin speed can be selected individually, irrespective of the selected programme and programme progress.

Cottons/Coloureds	hard-wearing textiles
Coloureds eco	hard-wearing textiles
Easy-Care	easy care textiles
Mixed Fabrics	different types of washing
Delicates/Silk	delicate washable textiles
☞ Wool	hand/machine washable wool
Rinse	extra rinse with spin
Spin	extra spin with selectable spin speed
Empty	the rinsing water with Rinse Hold ☞ (without final spin)
Rapid 15'	short programme
Textile Guard	weather, sport and outdoor textiles → Page 9
Shirts/Blouses	non-iron shirts
Lingerie	lingerie programme
Curtains	curtains programme
Easy-Care Dark	dark textiles

Preparation

Before washing for the first time, wash once without any washing → Page 9.

⚠ Correct installation according to separate Installation instructions.

Checking the machine

- Never switch on a damaged machine!
- Inform your customer service!

Insert mains plug

⚠ With dry hands only! Take hold of the plug only!

Turn on the tap

Insert for liquid detergent (depending on model), Page 10.

Compartment II: Detergent for the main wash, water softener, bleach, stain remover

Compartment ☞: Fabric softener, impregnating agent, starch

Compartment I: Detergent for pre-wash

Load display/recommended dosage

Follow manufacturer's care information! According to the information on the care labels. According to type, colour, soiling and temperature. Do not exceed maximum load → Page 7. Follow important instructions → Page 9.

Detergents and cleaning products

Meter accordingly: Washing amount, soiling, water hardness (ask your water supply company) and manufacturer's instructions. Models without insert for liquid detergent: Pour liquid detergent into the appropriate dispenser and place in the drum. During operation: Caution when opening the detergent drawer!

ⓘ Dilute viscous fabric softener and fabric conditioner with water. This prevents blockages.

Open the door/ set the programme

ⓘ If the childlock is active → deactivate it page 5. Follow the instructions in the display panel.

Load laundry/add detergent and care products

ⓘ Observe the load display and recommended dosage → page 9.

Close the washing machine door

Select individual settings → page 5.

Select stain → page 6. Select the temperature/ spin speed → page 2.

Select Start/Pause

Washing

Detergent drawer with compartments I, II, ☞

Control panel

Door handle

Service flap

Drum interior light – is operated by opening or closing the door, or after starting a programme; goes out automatically.

Removing washing

Open washing machine door and remove washing. If **Rinse Hold** ☞ (without final spin) is active: Select the spin speed or set the programme selector to **Empty** or **Spin**. Select **Start/Pause**. Remove any foreign objects – risk of rusting.

Turn off tap

Information on Aqua-Stop → Installation instructions, Page 7.

Switch off

Set programme selector to **Off**.

End of programme when ...

... **Finished, Remove washing** is indicated on the display panel.

Change programme ...

If you have mistakenly selected a wrong programme:

- Reselect programme.
- Select **Start/Pause**.

Cancel programme ...

- Select **Start/Pause**.
- Follow instructions in the display field; if required, top up washing (do not leave the door open for too long as water from the washing could run out of the open door).
- Load display not active.
- Select **Start/Pause**.

... or terminate

Programmes with high temperature:

- Cool washing: Select **Rinse**.
- Select **Start/Pause**.

Programmes at lower temperature:

- Select **Spin** or **Empty**.
- Select **Start/Pause**.

Individual settings

Select Option ☒ Change settings ☒ Information on programme progress; if required, with progress or load bar

Options

End time When the programme is selected, the time until the programme ends is displayed. Adjustable in 1-hour steps, up to max. 24h. Keep selecting **Change** ☒ buttons until required number of hours is displayed (h=hour). When the programme has started, no settings can be made.

Pre-wash ☞ OFF – ON For heavily soiled washing. Prewash at max. 30 °C.

soiling light – normal ☞ – intense ☞ Extend the washing time for a more intensive washing of heavily soiled items.

Select stain ☞ Automatic treatment of heavy stains → Page 6.

Extra rinse ☞ max. + 3 rinse cycles Extra rinse. Prolonged programme duration. Application recommendation: in areas with very soft water.

Less Ironing ☞ OFF – ON Special spin sequence with subsequent fluffing. Gentle final spin at reduced spin speed – residual moisture of the washing increased slightly.

Rinse Hold ☞ OFF – ON After the final spin the washing remains in the water.

hydroRinse ☞ OFF – ON Increased water level. More gentle treatment of the washing.

Signal ☞ Select volume of the information signals. OFF – quiet – medium – loud – very loud

Button signal Select volume of the button signals. OFF – quiet – medium – loud – very loud

Language Select language of the display texts.

Display symbols

Childlock/ Appliance lock ☞ OFF – ON You can lock the washing machine to prevent the functions you have set from being changed inadvertently. ON/OFF: Press and hold the **Options** ☒ button for 5 seconds once the programme has started/finished. Note: The childlock can remain activated until you start the next programme, even after switching off the machine. Then you can deactivate the childlock before the start of the programme and activate it again as necessary once the programme has started.

Foam detection ☞ Too much foam in the washing machine. Foam detection system active – special programme progress to reduce foam.

Select stain

ⓘ The correct treatment for every stain Do not let stains dry. Remove solid components beforehand. Arrange items of washing as usual and load the washing machine. Select a stain type (cannot be combined).

A total of 16 different stains can be selected. The washing machine adjusts the washing temperature, drum movement and soaking times to the stain type. Hot or cold water, gentle or intensive washing control (thanks to the new drum structure) and a long or short soaking time ensure that a special sequence of the washing programme runs for each stain type.

Stains can be additionally selected for all standard programmes (Cottons/Coloureds, Coloureds eco, Easy-Care) via the Options buttons / Change buttons.

The result: stains are treated optimally without the use of additional special detergents.

Baby food	Cosmetics	Tea
Blood	Red wine	Tomatoes
Egg	Chocolate	strawberry
Soil + sand	Sweat	orange
Grass	Dirty socks	
Coffee	Grease + oil	

If soiling cannot be assigned to any of the stains offered (or if there are several stain types on one textile), the washing intensity can be changed via the **soiling** option (light – normal ☞ – intense ☞). The 3-stage selection has been adjusted to the specifications of the detergent manufacturers → specifications on the detergent packets.

Stain treatment in detail – 2 examples

Egg	Soak in a lukewarm water bath, selected wash cycle at a higher water level and additional rinse cycles to remove particles.
Blood	Blood is first "loosened" in cold water, then the selected washing programme starts.

For the other stains we have formulated comparable solutions in intensive studies.

Programme overview

Programmes	°C	max.	Type of washing	Options; information
Cottons/Coloureds	90	8.0 kg*	Hard-wearing textiles, heat-resistant textiles made of cotton or linen	Pre-wash, Select stain, hydroRinse, Less Ironing, soiling, Extra rinse
Coloureds eco	60	8.0 kg*	Easy-care textiles made of cotton, linen, synthetic fibres or blended fabrics	Pre-wash, Select stain, hydroRinse, Less Ironing, soiling, Extra rinse
Easy-Care	60	8.0 kg*	Textiles made of cotton and easy-care textiles	Pre-wash, hydroRinse, Less Ironing, soil, Extra rinse; different types of washing can be washed together
Mixed Fabrics	40	3.5 kg*	Dark textiles made of cotton and dark easy-care textiles	Pre-wash, hydroRinse, soiling, Extra rinse; reduced rinse and final spin cycle
Easy-Care Dark	40	3.5 kg*	3.5 kg of heavy curtains or 25–30 m ² of light curtains	Pre-wash, hydroRinse, soiling, Extra rinse; reduced rinse and final spin cycle
Curtains	60	2.0 kg	Non-iron shirts made of cotton, linen, synthetics	Pre-wash, hydroRinse, soiling, Extra rinse; only short spin, peg out dripping wet
Shirts/Blouses	60	2.0 kg	Hand or machine washable wool or rich-wool textiles	Particularly gentle wash programme to avoid shrinkage, longer programme breaks (fabrics rest in the detergent solution)
Wool	40	2.0 kg	For delicate, washable textiles; e.g. made of silk, satin, synthetic fibres or blended fabrics	Pre-wash, Stains, hydroRinse, Less Ironing, soiling, Extra rinse; only short spin between the rinse cycles
Delicates/Silk	40	2.0 kg	Easy-care textiles made of cotton, linen, synthetic fibres or blended fabrics	Short programme approx. 15 minutes, suitable for lightly soiled laundry
Rapid 15'	40	2.0 kg	Washing with subsequent impregnation of weather, sport and outdoor textiles also with weather protection membrane, impregnable textiles	hydroRinse, soiling, Extra rinse; for more info- mation on impregnation → Page 9, reduced final spin at intervals
Textile Guard	40	2.0 kg	Washing with subsequent impregnation of weather, sport and outdoor textiles also with weather protection membrane, impregnable textiles	hydroRinse, Less Ironing, soiling, Extra rinse; reduced final spin at intervals
Lingerie	40	2.0 kg	Dessous	hydroRinse, Less Ironing, soiling, Extra rinse; reduced spin cycle

Safety instructions

– Read and follow the operating and installation instructions and all other information enclosed with the washing machine.

– Retain documents for subsequent use.

Risk of electric shock

- Never pull out the mains plug by tugging the power cord!
- Never insert/pull out the mains plug with damp hands.

Danger to life

Redundant appliances:

- Pull out the mains plug.
- Sever the power cord and discard together with the plug.
- Destroy the lock on the washing machine door.

This will prevent children from locking themselves in and suffocating.

Risk of suffocation

- Keep packaging, plastic film and packaging parts out of the reach of children.

Risk of poisoning

Risk of explosion

- Keep detergents and care products out of the reach of children.
- Caused by detergents containing solvents, e.g. stain remover/ items of washing pretreated with solvent naphtha may result in an explosion after being loaded into the washing machine. Before hand thoroughly rinse items of washing by hand.

Risk of injury

- Washing machine door may become very hot.
- Caution when draining hot detergent solution.
- Do not climb on the washing machine.
- Do not lean on the open washing machine door.
- Do not touch the drum in case it is still spinning.

Consumption values

Programme	Option soiling	Load	Current**	Water**	Programme duration**
Cottons/Coloureds 30 °C*	intense ☞	8.0 kg	0.61 kWh	67 l	2:02 h
Cottons/Coloureds 40 °C*	intense ☞	8.0 kg	0.94 kWh	67 l	2:02 h
Cottons/Coloureds 60 °C*	intense ☞	8.0 kg	1.65 kWh	67 l	2:02 h
Coloureds eco 60 °C*	intense ☞	8.0 kg	1.20 kWh	56 l	3:25 h
Cottons/Coloureds 90 °C	intense ☞	8.0 kg	2.73 kWh	84 l	2:02 h
Easy-Care 40 °C*	intense ☞	3.5 kg	0.55 kWh	43 l	1:05 h
Easy-Care 40 °C* (also suitable as Short programme)	light	3.5 kg	0.54 kWh	43 l	0:40 h
Delicates/Silk -- (cold)	light	2.0 kg	0.03 kWh	30 l	0:35 h
Delicates/Silk 30 °C	light	2.0 kg	0.20 kWh	30 l	0:35 h
Wool -- (cold)	–	2.0 kg	0.08 kWh	40 l	0:36 h
Wool 30 °C	–	2.0 kg	0.20 kWh	40 l	0:36 h

* Programme setting to be tested in accordance with European standard 60 456.

Note on comparative tests: test the test programme with maximum load, **soiling intense** ☞ option selected, maximum spin speed.

A **short programme** which can be used for coloured items is **Easy-Care 40 °C**, with the **soiling light** option selected and set to maximum spin speed.

** The values deviate from the indicated values depending on water pressure, water hardness, water inlet temperature, room temperature, type and amount of washing and degree of soiling, utilised detergent, fluctuations in the mains voltage and selected additional functions.

Important information

Before washing for the first time,

Do not put any washing in the washing machine! Turn on the tap, fill approx. 1 litre of water and then pour ½ measuring cup of detergent into dispenser II. Set the **Easy-Care 60 °C** programme and select **Start/Pause**. At the end of the programme set the programme selector to **Off**.

Protecting the washing and the machine

- Empty pockets.
- Remove metal parts (paper clips, etc.).
- Wash delicates in the net/bag (tights, curtains, underwired bras).
- Close zips, button up covers.
- Brush sand out of pockets and collars.
- Remove curtain fittings or include in the net/bag.

Washing with different degrees of soiling

light	Wash new items separately. Do not prewash. If required, select soiling light .
heavy	Select soiling normal ☞ or Select stain ☞. Load less washing. If required, prewash. Select soiling intense ☞ or Select stain ☞.

Loading items of laundry

Fill with large and small items of laundry.
Take care not to trap items of laundry between the washing machine door and the rubber seal.

Soaking *Load washing of the same colour*

Pour soaking agent/detergent into dispenser II according to the manufacturer's instructions. Set **Cottons/Coloureds 30 °C** programme and select **Start/Pause**. After approx. 10 minutes select **Start/Pause**. After the required soaking time reselect **Start/Pause** if the programme is to be continued or change the programme.

Starching *Laundry must not be treated with fabric softener*

Starching is possible in all wash programmes if liquid starch is used. Add starch to the fabric softener compartment ☞ in accordance with the manufacturer's instructions.

Dyeing/bleaching

Dye in small quantities only. Salt can corrode stainless steel.
Observe the dye manufacturer's specifications.
Do **not** bleach laundry in the washing machine.

Textile Guard *Laundry must not be treated with fabric softener. Remove all residue of fabric softener from the detergent drawer.*

Special detergent and impregnating agent suitable for machine washing are available from sports shops. Dosage according to the manufacturer's instructions:
1. Special detergent for outdoor clothing in compartment II and
2. Impregnating agent in compartment ☞.

Set the programme selector to **Textile Guard**. Set the temperature.
Select **Start/Pause**. Final treatment of the laundry in accordance with the manufacturer's instructions.

Load detection

The loading sensor detects how heavily the washing machine is loaded. It is not a weighing function. Automatic load sensing ensures that the use of water and of power is optimised during the wash programme according to the type of fabric and the amount of laundry loaded.

Recommended dosage function

Based on the selected programme and the detected load, the recommended dosage function gives a recommendation for the detergent dosage in %. The % figure refers to the recommendation of the detergent manufacturer. A minimum value of 40 % is necessary for an optimum wash result.

Care

Machine housing, control panel

- Wipe with a soft, damp cloth.
- Do not use any abrasive cloths, sponges or cleaning agents (stainless-steel cleaner).
- Immediately remove washing and cleaning agent residue.
- Do not clean the appliance with a water jet.

Clean the detergent drawer ...

... if it contains detergent or fabric softener residue.

1. Pull out, depress insert, completely remove. Remove insert: Press insert upwards with finger.
2. Clean detergent dispenser and insert with water and a brush and dry.
3. Attach insert and engage (connect cylinder to guide pin).
4. Insert detergent drawer.

Leave detergent drawer open so that residual water can evaporate.

Drum

Leave washing machine door open so that the drum can dry out.

Rust stains – use chlorine-free cleaning agent, not steel wool.

Descaling *No washing in the machine!*

Not necessary if detergent dispensed correctly. However, follow the instructions of the descaler manufacturer.

Insert for liquid detergent *depending on the model*

Position the insert for dispensing liquid detergent:

- Take the detergent drawer out completely → Page 10.
- Slide the insert forwards.

Do not use the insert (slide upwards):

- for gel detergents and washing powder,
- for programmes with Prewash and end time.

Information on the display panel *depending on model*

Door open?	Close the washing machine door properly; washing may be caught.
Tap closed?	Turn the tap on fully, supply hose kinked/jammed; Clean filter → Page 11 water pressure too low.
Pump blocked!	Detergent solution pump blocked; Clean the detergent solution pump → Page 11. Drainage hose / waste pipe blocked; Clean the drainage hose at the siphon → Page 11.
Pause No top-up; Water level too high or Temperature too high	Top up washing is not possible. Select "Start/Pause" to continue the programme.
F:23	Water in the base pan, appliance leaking. Call customer service!
F: 34, 61	Door cannot be locked. Open door and close it with an audible "click"; switch appliance off and on again; set programme and select individual settings; start programme.
F: 42, 43, 44	Motor fault. Call customer service! → Page 13.
Other displays	Switch off the appliance, wait for 5 seconds and switch it back on. If the display appears again, call customer services → Page 13.

Maintenance

Detergent solution pump

Set programme selector to **Off**, pull out the mains plug.

1. Open and remove service flap.
2. Take the drainage hose out of the holder. Remove sealing cap, allow detergent solution to flow out. Put the closing cap back on the hose.
3. Carefully unscrew the pump cover (residual water).
4. Clean the interior, pump cover thread and pump housing (fan impeller in the detergent solution pump must rotate).
5. Re-insert pump cover and screw on tight, handle is upright. Insert the drain hose into the holder.
6. Insert and close service flap.

To prevent unused detergent from flowing into the outlet during the next wash: Pour 1 litre of water into dispenser II and start the **Empty** programme.

Drainage hose at the siphon

Set the programme selector to **Off**, disconnect the mains plug.

1. Loosen the hose clamp, carefully remove the drainage hose (residual water).
2. Clean the drainage hose and siphon connecting piece.
3. Reattach the drainage hose and secure the connection with the hose clamp.

Filter in the water inlet hose

Risk of electric shock! *Do not immerse Aqua-Stop safety device in water (contains electric valve).*

Release water pressure in the supply hose:

1. Turn off the tap!
2. Select any programme (**except** Spin/Empty).
3. Select **Start/Pause**. Leave programme for approx. 40 seconds.
4. Set programme selector to **Off**. Pull out the mains plug.

Clean filter:

1. Depending on model:
 - Disconnect the hose from the water tap.
 - Clean filter with small brush.

or

- Remove hose from the rear.
- Remove filter with pliers and clean.

2. Connect the hose and check for leaks.

11

What to do if ...


- Water is running out.
 - Correctly attach/replace drainage hose.
 - Tighten screw-fitting on the supply hose.
- Water not flowing in. Detergent not washed in.
 - **Start/Pause** not selected?
 - Tap not open?
 - Filter blocked? Clean filter → Page 11.
 - Supply hose kinked or jammed?
- Washing machine door cannot be opened.
 - Safety function active. Programme stopped? → Page 4.
 - **Rinse Hold** ☞ (without final spin) selected? → Page 4.
 - Can be opened via emergency release only → Page 13.
- Programme does not start.
 - **Start/Pause** or **End time** selected?
 - Washing machine door closed?
- Detergent solution is not drained.
 - Clean detergent solution pump → Page 11.
 - Clean outlet pipe and/or drainage hose.
- Water not visible in the drum.
 - Not a fault – water below the visible area.
- Spin result not satisfactory.
 - Wash small and large items of washing together.
 - **Less Ironing** selected? → Page 5.
 - Too low speed selected? → Page 3.
- Spin cycle actuated several times.
 - Not a fault – unbalanced load detection system adjusts imbalance.
- Dispenser ☞ not completely rinsed out.
 - Remove the insert. Clean detergent drawer and insert → Page 10.
- Odour formation in the washing machine.
 - Run **Cottons/Coloureds 90 °C** programme without washing. Use standard detergent.
- Foam is coming out of the detergent drawer.
 - Too much detergent used?
 - Mix 1 tablespoon of fabric softener with ½ litre of water and pour into compartment II (*not with outdoor fabrics!*).
 - Reduce detergent dosage for the next wash cycle.
- Intense noise formation, vibrations and "wandering" during spin cycle.
 - Appliance feet fixed? Secure appliance feet → *Installation instructions, Page 5.*
 - Transportation safety devices removed? Remove transportation protection devices → *Installation instructions, Page 3.*
- Display panel/indicator lights do not function while the appliance is running.
 - Power failure?
 - Fuse tripped? Switch on/replace fuse.
 - If the fault occurs repeatedly, call customer service.
- Programme progress longer than usual.
 - Not a fault – unbalanced load detection system adjusts imbalance by repeatedly distributing the washing.
 - Not a fault – foam detection system active → Page 5.
- Detergent residue on the washing.
 - Occasionally phosphate-free detergents contain water-insoluble residue.
 - Select **Rinse** or brush the laundry after washing.

What to do if ...

- In the pause state **Start/Pause** flashes very quickly and a signal sounds.
 - Water level too high. Top up washing is not possible. If required, close door immediately.
 - Select "Start/Pause" to continue the programme.
- If a fault cannot be rectified or a repair is required:
 - Set programme selector to **Off** and pull out the mains plug.
 - Turn off tap and call customer service → Page 13.

Emergency release

e.g. in the event of a power failure, depending on the model



The programme continues to run when the power has been restored. However, if the laundry has to be removed, the washing machine door can be opened as follows:

Risk of scalding.
The detergent solution and laundry may be hot. If possible, leave it to cool down. Do not reach into the drum if it is still rotating. Do not open the washing machine door if water can be seen through the glass.

- Set the programme selector to **Off** and disconnect the mains plug.
- Drain the detergent solution → Page 11.
- Pull the emergency release with a tool and release. The washing machine door can then be opened.

Customer service

- Before calling customer service, please check whether you can eliminate the fault yourself. → Page 12; What to do if ...
 - If you require advice, even during the warranty period, you will incur costs for the call-out of a technician.
 - You can find your nearest customer service in the enclosed list. Please give customer service the product number (E-Nr.) and the production number (FD) of the appliance.
- E-Nr. _____ FD _____

Product number Production number
- Please help by quoting the product number and production number to prevent unnecessary call-outs. This will save you additional costs.
- This information can be found: on the inside of the washing machine door*/ opened service flap* and rear of the appliance. *depending on model*



Observe the safety instructions on page 8!



Washing machine

Instruction manual

en



Do not switch on the washing machine until you have read these instructions and the separate installation instructions!



14

Your washing machine

Congratulations – You have opted for a modern, high-quality domestic appliance manufactured by Siemens. The washing machine is distinguished by its economical water and energy consumption.

Each appliance which leaves our factory is inspected thoroughly to ensure that it functions properly and is in perfect condition.

For further information and a selection of our products go to our web site: <http://www.siemens-international.com> or contact our customer service centres

Contents

	Page
Intended use	1
Programmes	1
Setting the programme	3
Washing	3/4
After washing	4
Individual settings	5
Select stain	6
Overview of programmes	7
Safety instructions	8
Consumption values	8
Important information	9
Care	10
Information on the display panel	10
Maintenance	11
What to do if ...	12/13
Emergency release ...	13
Customer service	13



Protection of the environment/ Conservation tips

- Utilise the maximum amount of washing for the particular programme.
- Wash normally soiled washing without prewash.
- Instead of **Cottons/Coloureds 90 °C** programme, select **Coloureds eco 60 °C** and option **soiling intense** . Comparable cleaning result with significantly lower energy consumption.
- Meter detergent according to the manufacturer's instructions and water hardness.
- If the washing is then dried in the tumble dryer, select spin speed according to the instructions of the dryer manufacturer.

Automatic stain removal

Automatic treatment of 16 different types of stains possible.
No pretreatment of stains required – washing machine automatically adjusts itself to the washing process → Page 6.

Intended use

- for use in the household only,
- for the washing of machine washable textiles in a detergent solution,
- to be operated with cold drinking water and commercially available detergents and care products which are suitable for use in washing machines.



- Do not leave children unattended near the washing machine!
- Keep pets away from the washing machine!

Programmes

Detailed programme overview → Page 7.
Temperature and spin speed can be selected individually, irrespective of the selected programme and programme progress.

Cottons/Coloureds	hard-wearing textiles
Coloureds eco	hard-wearing textiles
Easy-Care	easy care textiles
Mixed Fabrics	different types of washing
Delicates/Silk	delicate washable textiles
Wool	hand/machine washable wool
Rinse	extra rinse with spin
Spin	extra spin with selectable spin speed
Empty	the rinsing water with Rinse Hold (without final spin)
Rapid 15'	short programme
Textile Guard	weather, sport and outdoor textiles → Page 9
Shirts/Blouses	non-iron shirts
Lingerie	lingerie programme
Curtains	curtains programme
Easy-Care Dark	dark textiles

Preparation

Before washing for the first time,
wash once without any washing → Page 6



Correct installation according to separate
Installation instructions.



Checking the machine

- Never switch on a damaged machine!
- Inform your customer service!



Insert mains plug

- With dry hands only!
Take hold of the plug only!



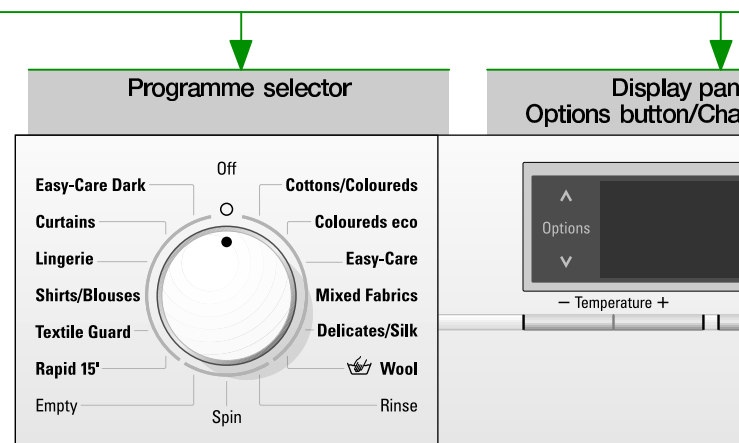
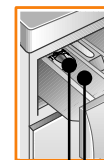
Turn on the tap

Insert for liquid detergent (depending on model), Page 10.

Compartment II: Detergent for the main wash, water softener, bleach, stain remover

Compartment : Fabric softener, impregnating agent, starch

Compartment I: Detergent for pre-wash



Programme selector for
switching the machine on and off
and for selecting the programme.
Can be rotated in either direction.



All buttons are sensitive and a
gentle tap is adequate!
If the buttons are touched for
longer, the setting options run
automatically!

—, 30° – 90° Temperature
Select the temperature

0, 400 – 1600* Spin
Select the spin speed (* =
model) (0 = no spin during
progress)

Load display/ recommended dosage

To activate, first open the door,
set the programme and then load
the items of laundry.

Sort the washing

Follow manufacturer's care information!
According to the information on the care labels.
According to type; colour; soiling and temperature.
Do not exceed maximum load -> Page 7.
Follow important instructions -> Page 9.

Detergents and cleaning products

Meter accordingly:
Washing amount, soiling, water hardness (ask your water supply
company) and manufacturer's instructions.
Models without insert for liquid detergent: Pour liquid detergent into
the appropriate dispenser and place in the drum.
During operation: Caution when opening the detergent drawer!

i Dilute viscous fabric softener and fabric conditioner
with water. This prevents blockages.

Open the door/ set the programme

i If the childlock is active -> deactivate it page 5.
Follow the instructions in the display panel.

Load laundry/add detergent and care products

i Observe the load display
and recommended
dosage -> page 9.



Close the washing machine door

Select individual settings
-> page 5.

Select stain -> page 6.
Select the temperature/
spin speed -> page 2.

Select Start/Pause



Washing

Detergent drawer with
compartments I, II, ♂

Washing machine door

Control panel

Door handle



Service flap

Drum interior light -
is operated by opening or
closing the door, or after starting
a programme; goes out
automatically.

Washing

Removing washing



Open washing machine door and remove washing.
If **Rinse Hold** (without final spin) is active:
Select the spin speed or set the programme selector to
Empty or **Spin**. Select **Start/Pause**.
Remove any foreign objects - risk of rusting.



Turn off tap

Information on Aqua-Stop ->
Installation instructions, Page 7.



Switch off

Set programme selector to **Off**.

End of programme when ...

... **Finished, Remove washing** is indicated on the display
panel.

Change programme ...

If you have mistakenly selected a wrong programme:
- Reselect programme.
- Select **Start/Pause**.


Cancel programme ...

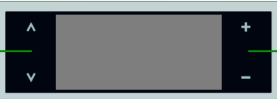
- Select **Start/Pause**.
- Follow instructions in the display field;
if required, top up washing (do not leave the door open
for too long as water from the washing could run out of
the open door).
- Load display not active.
- Select **Start/Pause**.

... or terminate

Programmes with high temperature:
- Cool washing: Select **Rinse**.
- Select **Start/Pause**.
Programmes at lower temperature:
- Select **Spin** or **Empty**.
- Select **Start/Pause**.

Individual settings

Select Option 








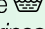

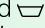
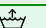
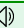
Change settings 

available depending
on selected programme

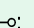
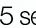

Information on programme progress;
if required, with progress or load bar

Options

see also programme overview

End time	When the programme is selected, the time until the programme ends is displayed. Adjustable in 1-hour steps, up to max. 24h. Keep selecting Change  buttons until required number of hours is displayed (h=hour). When the programme has started, no settings can be made.
Pre-wash  OFF – ON	For heavily soiled washing. Prewash at max. 30 °C.
soiling light – normal  – intense 	Extend the washing time for a more intensive washing of heavily soiled items.
Select stain 	Automatic treatment of heavy stains → Page 6.
Extra rinse  max. + 3 rinse cycles	Extra rinse. Prolonged programme duration. Application recommendation: in areas with very soft water.
Less Ironing  OFF – ON	Special spin sequence with subsequent fluffing. Gentle final spin at reduced spin speed – residual moisture of the washing increased slightly.
Rinse Hold  OFF – ON	After the final spin the washing remains in the water.
hydroRinse  OFF – ON	Increased water level. More gentle treatment of the washing.
Signal 	Select volume of the information signals. OFF – quiet – medium – loud – very loud
Button signal	Select volume of the button signals. OFF – quiet – medium – loud – very loud
Language	Select language of the display texts.

Display symbols

Childlock/ Appliance lock  OFF – ON	You can lock the washing machine to prevent the functions you have set from being changed inadvertently. ON/OFF: Press and hold the Options  button for 5 seconds once the programme has started/finished. Note: The childlock can remain activated until you start the next programme, even after switching off the machine. Then you can deactivate the childlock before the start of the programme and activate it again as necessary once the programme has started.
Foam detection 	Too much foam in the washing machine. Foam detection system active – special programme progress to reduce foam.

Select stain



The correct treatment for every stain



Do not let stains dry. Remove solid components beforehand. Arrange items of washing as usual and load the washing machine. Select a stain type (cannot be combined).

A total of 16 different stains can be selected. The washing machine adjusts the washing temperature, drum movement and soaking times to the stain type. Hot or cold water, gentle or intensive washing control (thanks to the new drum structure) and a long or short soaking time ensure that a special sequence of the washing programme runs for each stain type.

Stains can be additionally selected for all standard programmes (Cottons/Coloureds, Coloureds eco, Easy-Care) via the Options buttons / Change buttons.

The result: stains are treated optimally without the use of additional special detergents.

Baby food	Cosmetics	Tea
Blood	Red wine	Tomatoes
Egg	Chocolate	strawberry
Soil + sand	Sweat	orange
Grass	Dirty socks	
Coffee	Grease + oil	

If soiling cannot be assigned to any of the stains offered (or if there are several stain types on one textile), the washing intensity can be changed via the *soiling* option (*light – normal*  – *intense* ) The 3-stage selection has been adjusted to the specifications of the detergent manu- facturers → specifications on the detergent packets.


Stain treatment in detail – 2 examples

Egg	Soak in a lukewarm water bath, selected wash cycle at a higher water level and additional rinse cycles to remove particles.
Blood	Blood is first "loosened" in cold water, then the selected washing programme starts.

For the other stains we have formulated comparable solutions in intensive studies.

Programme overview -> Pay attention to the Consumption values table on page 8 and the information on page 9.

Programmes °C max. Type of washing      Options; information

Cottons/Coloureds	--- ... 90	8,0 kg*	Hard-wearing textiles, heat-resistant textiles made of cotton or linen	Pre-wash, Select stain, hydroRinse, Less Ironing, soiling, Extra rinse
Coloureds eco	--- ... 60		Easy-care textiles made of cotton, linen, synthetic fibres or blended fabrics	Pre-wash, Select stain, hydroRinse, Less Ironing, soiling, Extra rinse
Easy-Care	--- ... 60	3,5 kg*	Textiles made of cotton and easy-care textiles	Pre-wash, hydroRinse, Less Ironing, soil, Extra rinse; different types of washing can be washed together
Mixed Fabrics			Dark textiles made of cotton and dark easy-care textiles	Pre-wash, hydroRinse, soiling, Extra rinse; reduced rinse and final spin cycle
Easy-Care Dark	--- ... 40		3.5 kg of heavy curtains or 25–30 m² of light curtains	Pre-wash, hydroRinse, soiling, Extra rinse; reduced rinse and final spin cycle
Curtains		--- ... 60	Non-iron shirts made of cotton, linen, synthetics fibres or blended fabrics	Pre-wash, hydroRinse, soiling, Extra rinse; only short spin, peg out dripping wet
Shirts/Blouses			Hand or machine washable wool or rich-wool textiles	Particularly gentle wash programme to avoid shrinkage, longer programme breaks (fabrics rest in the detergent solution)
 Wool		2,0 kg	for delicate, washable textiles, eg. made of silk, satin, synthetic fibres or blended fabrics	Pre-wash, Stains, hydroRinse, Less Ironing, soiling, Extra rinse; only short spin between the rinse cycles
Delicates/Silk	--- ... 40		Easy-care textiles made of cotton, linen, synthetic fibres or blended fabrics	Short programme approx. 15 minutes, suitable for lightly soiled laundry
Rapid 15'				
Textile Guard	--- ... 40	1,0 kg	Washing with subsequent impregnation of weather, sport and outdoor textiles also with weather protection membrane, impregnable textiles	hydroRinse, soiling, Extra rinse; for more information on impregnation -> Page 9, reduced final spin at intervals
Lingerie			Dessous	hydroRinse, Less Ironing, soiling, Extra rinse; reduced spin cycle

Additional programmes

Rinse, Spin, Empty

i The programmes are time-controlled for lightly soiled textiles. If textiles are heavily soiled, reduce load or select option e.g. **soiling**.

When washing the maximum load for programmes marked with *, always select the **soiling intense**  option.

Regardless of the type of washing, **Easy-Care 40 °C** with maximum spin speed is the best short programme for the job.

Programmes without prewash – pour detergent into dispenser II, programmes with prewash – divide detergent between dispensers I and II.

Siemens-Elektrogeräte GmbH
Carl-Wery-Str. 34
81739 München/Germany

WM16S795GB/WM14S795GB
WM14S79BUK/WM16S79CGB

9000 376 415
0109



Safety instructions

- Read and follow the operating and installation instructions and all other information enclosed with the washing machine.
- Retain documents for subsequent use.

Risk of electric shock

- Never pull out the mains plug by tugging the power cord!
- Never insert/pull out the mains plug with damp hands.

Danger to life

- Redundant appliances:
- Pull out the mains plug.
 - Sever the power cord and discard together with the plug.
 - Destroy the lock on the washing machine door.
- This will prevent children from locking themselves in and suffocating.

Risk of suffocation

- Keep packaging, plastic film and packaging parts out of the reach of children.

Risk of poisoning

Risk of explosion

- Keep detergents and care products out of the reach of children.
- Caused by detergents containing solvents, e.g. stain remover/ items of washing pretreated with solvent naphtha may result in an explosion after being loaded into the washing machine. Before hand thoroughly rinse items of washing by hand.

Risk of injury

- Washing machine door may become very hot.
- Caution when draining hot detergent solution.
- Do not climb on the washing machine.
- Do not lean on the open washing machine door.
- Do not touch the drum in case it is still spinning.

Consumption values

Programme	Option soiling	Load	Current**	Water**	Programme duration**
Cottons/Coloureds 30 °C*	intense	8.0 kg	0.61 kWh	67 l	2:02 h
Cottons/Coloureds 40 °C*	intense	8.0 kg	0.94 kWh	67 l	2:02 h
Cottons/Coloureds 60 °C*	intense	8.0 kg	1.65 kWh	67 l	2:02 h
Coloureds eco 60 °C*	intense	8.0 kg	1.20 kWh	56 l	3:25 h
Cottons/Coloureds 90 °C	intense	8.0 kg	2.73 kWh	84 l	2:02 h
Easy-Care 40 °C*	intense	3.5 kg	0.55 kWh	43 l	1:05 h
Easy-Care 40 °C* (also suitable as Short programme)	light	3.5 kg	0.54 kWh	43 l	0:40 h
Delicates/Silk — (cold)	light	2.0 kg	0.03 kWh	30 l	0:35 h
Delicates/Silk 30 °C	light	2.0 kg	0.20 kWh	30 l	0:35 h
Wool — (cold)	–	2.0 kg	0.08 kWh	40 l	0:36 h
Wool 30 °C	–	2.0 kg	0.20 kWh	40 l	0:36 h

* Programme setting to be tested in accordance with European standard 60 456.
Note on comparative tests: test the test programme with maximum load, **soiling intense** option selected, maximum spin speed.
A **short programme** which can be used for coloured items is **Easy-Care 40 °C**, with the **soiling light** option selected and set to maximum spin speed.

** The values deviate from the indicated values depending on water pressure, water hardness, water inlet temperature, room temperature, type and amount of washing and degree of soiling, utilised detergent, fluctuations in the mains voltage and selected additional functions.



Important information



Before washing for the first time,

Do not put any washing in the washing machine! Turn on the tap, fill approx. 1 litre of water and then pour ½ measuring cup of detergent into dispenser II. Set the **Easy-Care 60 °C** programme and select **Start/Pause**. At the end of the programme set the programme selector to **Off**.



Protecting the washing and the machine

- Empty pockets.
- Remove metal parts (paper clips, etc.).
- Wash delicates in the net/bag (tights, curtains, underwired bras).
- Close zips, button up covers.
- Brush sand out of pockets and collars.
- Remove curtain fittings or include in the net/bag.



Washing with different degrees of soiling

light		Wash new items separately. Do not prewash. If required, select soiling light .
		Select soiling normal or Select stain .
heavy		Load less washing. If required, prewash. Select soiling intense or Select stain .



Loading items of laundry

Fill with large and small items of laundry.
Take care not to trap items of laundry between the washing machine door and the rubber seal.



Soaking Load washing of the same colour

Pour soaking agent/detergent into dispenser II according to the manufacturer's instructions. Set **Cottons/Coloureds 30 °C** programme and select **Start/Pause**. After approx. 10 minutes select **Start/Pause**. After the required soaking time reselect **Start/Pause** if the programme is to be continued or change the programme.



Starching Laundry must not be treated with fabric softener

Starching is possible in all wash programmes if liquid starch is used. Add starch to the fabric softener compartment in accordance with the manufacturer's instructions.



Dyeing/bleaching

Dye in small quantities only. Salt can corrode stainless steel.
Observe the dye manufacturer's specifications.
Do **not** bleach laundry in the washing machine.



Textile Guard Laundry must not be treated with fabric softener. Remove all residue of fabric softener from the detergent drawer.

Special detergent and impregnating agent suitable for machine washing are available from sports shops. Dosage according to the manufacturer's instructions:
1. Special detergent for outdoor clothing in compartment II and
2. Impregnating agent in compartment .

Set the programme selector to **Textile Guard..** Set the temperature.
Select **Start/Pause**. Final treatment of the laundry in accordance with the manufacturer's instructions.



Load detection

The loading sensor detects how heavily the washing machine is loaded. It is not a weighing function. Automatic load sensing ensures that the use of water and of power is optimised during the wash programme according to the type of fabric and the amount of laundry loaded.



Recommended dosage function

Based on the selected programme and the detected load, the recommended dosage function gives a recommendation for the detergent dosage in %. The % figure refers to the recommendation of the detergent manufacturer. A minimum value of 40 % is necessary for an optimum wash result.

Care

- Risk of electric shock!
- Pull out the mains plug!
- Risk of explosion! No solvents!



Machine housing, control panel

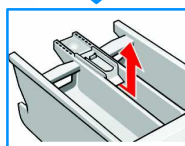
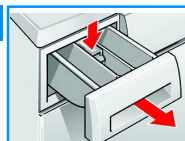
- Wipe with a soft, damp cloth.
- Do not use any abrasive cloths, sponges or cleaning agents (stainless-steel cleaner).
- Immediately remove washing and cleaning agent residue.
- Do not clean the appliance with a water jet.



Clean the detergent drawer ...

... if it contains detergent or fabric softener residue.

1. Pull out, depress insert, completely remove. Remove insert: Press insert upwards with finger.
2. Clean detergent dispenser and insert with water and a brush and dry.
3. Attach insert and engage (connect cylinder to guide pin).
4. Insert detergent drawer.



Leave detergent drawer open so that residual water can evaporate.



Drum

Leave washing machine door open so that the drum can dry out.

Rust stains – use chlorine-free cleaning agent, not steel wool.



Descaling *No washing in the machine!*

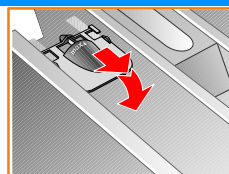
Not necessary if detergent dispensed correctly. However, follow the instructions of the descaler manufacturer.



Insert for liquid detergent *depending on the model*

Position the insert for dispensing liquid detergent:

- Take the detergent drawer out completely → Page 10.
- Slide the insert forwards.
- Do not use the insert (slide upwards):
- for gel detergents and washing powder,
- for programmes with Prewash and end time.



Information on the display panel *depending on model*

Door open?	Close the washing machine door properly; washing may be caught.
Tap closed?	Turn the tap on fully, supply hose kinked/jammed; Clean filter → Page 11 water pressure too low.
Pump blocked!	Detergent solution pump blocked; Clean the detergent solution pump → Page 11. Drainage hose / waste pipe blocked; Clean the drainage hose at the siphon → Page 11.
Pause No top-up; Water level too high or Temperature too high	Top up washing is not possible. Select "Start/Pause" to continue the programme.
F:23	Water in the base pan, appliance leaking. Call customer service!
F: 34, 61	Door cannot be locked. Open door and close it with an audible "click"; switch appliance off and on again; set programme and select individual settings; start programme.
F: 42, 43, 44	Motor fault. Call customer service! → Page 13.
Other displays	Switch off the appliance, wait for 5 seconds and switch it back on. If the display appears again, call customer services → Page 13.

Maintenance

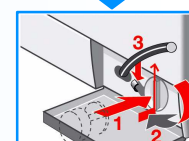
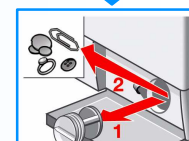
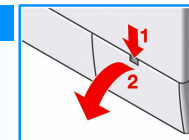
- Risk of scalding!
- Allow detergent solution to cool down!
- Turn off the tap!



Detergent solution pump

Set programme selector to **Off**, pull out the mains plug.

1. Open and remove service flap.
2. Take the drainage hose out of the holder. Remove sealing cap, allow detergent solution to flow out. Put the closing cap back on the hose.
3. Carefully unscrew the pump cover (residual water).
4. Clean the interior, pump cover thread and pump housing (fan impeller in the detergent solution pump must rotate).
5. Re-insert pump cover and screw on tight, handle is upright. Insert the drain hose into the holder.
6. Insert and close service flap.



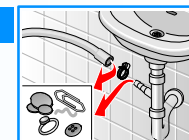
To prevent unused detergent from flowing into the outlet during the next wash: Pour 1 litre of water into dispenser II and start the **Empty** programme.



Drainage hose at the siphon

Set the programme selector to **Off**, disconnect the mains plug.

1. Loosen the hose clamp, carefully remove the drainage hose (residual water).
2. Clean the drainage hose and siphon connecting piece.
3. Reattach the drainage hose and secure the connection with the hose clamp.



Filter in the water inlet hose



Risk of electric shock!

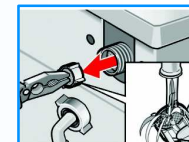
Do not immerse Aqua-Stop safety device in water (contains electric valve).

Release water pressure in the supply hose:


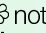
1. Turn off the tap!
2. Select any programme (**except** Spin/Empty).
3. Select **Start/Pause**. Leave programme for approx. 40 seconds.
4. Set programme selector to **Off**. Pull out the mains plug.

Clean filter:

1. Depending on model:
 - Disconnect the hose from the water tap.
 - Clean filter with small brush.
- or
- Remove hose from the rear.
- Remove filter with pliers and clean.
2. Connect the hose and check for leaks.



What to do if ...

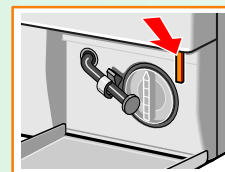
- Water is running out.
 - Correctly attach/replace drainage hose.
 - Tighten screw-fitting on the supply hose.
- Water not flowing in. Detergent not washed in.
 - **Start/Pause** not selected?
 - Tap not open?
 - Filter blocked? Clean filter → Page 11.
 - Supply hose kinked or jammed?
- Washing machine door cannot be opened.
 - Safety function active. Programme stopped? → Page 4.
 - **Rinse Hold**  (without final spin) selected? → Page 4.
 - Can be opened via emergency release only → Page 13.
- Programme does not start.
 - **Start/Pause** or **End time** selected?
 - Washing machine door closed?
- Detergent solution is not drained.
 - Clean detergent solution pump → Page 11.
 - Clean outlet pipe and/or drainage hose.
- Water not visible in the drum.
 - Not a fault – water below the visible area.
- Spin result not satisfactory.
 - Wash small and large items of washing together.
 - **Less Ironing** selected? → Page 5.
 - Too low speed selected? → Page 3.
- Spin cycle actuated several times.
 - Not a fault – unbalanced load detection system adjusts imbalance.
- Dispenser  not completely rinsed out.
 - Remove the insert. Clean detergent drawer and insert → Page 10.
- Odour formation in the washing machine.
 - Run **Cottons/Coloureds 90 °C** programme without washing. Use standard detergent.
- Foam is coming out of the detergent drawer.
 - Too much detergent used?
 - Mix 1 tablespoon of fabric softener with ½ litre of water and pour into compartment II (*not with outdoor fabrics!*).
 - Reduce detergent dosage for the next wash cycle.
- Intense noise formation, vibrations and "wandering" during spin cycle.
 - Appliance feet fixed?
 - Secure appliance feet → *Installation instructions, Page 5.*
 - Transportation safety devices removed?
 - Remove transportation protection devices → *Installation instructions, Page 3.*
- Display panel/indicator lights do not function while the appliance is running.
 - Power failure?
 - Fuse tripped? Switch on/replace fuse.
 - If the fault occurs repeatedly, call customer service.
- Programme progress longer than usual.
 - Not a fault – unbalanced load detection system adjusts imbalance by repeatedly distributing the washing.
 - Not a fault – foam detection system active → Page 5.
- Detergent residue on the washing.
 - Occasionally phosphate-free detergents contain water-insoluble residue.
 - Select **Rinse** or brush the laundry after washing.

What to do if ...

- In the pause state **Start/Pause** flashes very quickly and a signal sounds.
 - Water level too high. Top up washing is not possible. If required, close door immediately.
 - Select "Start/Pause" to continue the programme.
- If a fault cannot be rectified or a repair is required:
 - Set programme selector to **Off** and pull out the mains plug.
 - Turn off tap and call customer service → Page 13.

Emergency release

e.g. in the event of a power failure, depending on the model



The programme continues to run when the power has been restored. However, if the laundry has to be removed, the washing machine door can be opened as follows:



*Risk of scalding.
The detergent solution and laundry may be hot.
If possible, leave it to cool down.
Do not reach into the drum if it is still rotating.
Do not open the washing machine door if water can be seen through the glass.*

- Set the programme selector to **Off** and disconnect the mains plug.
- Drain the detergent solution → Page 11.
- Pull the emergency release with a tool and release. The washing machine door can then be opened.

Customer service

- Before calling customer service, please check whether you can eliminate the fault yourself. → Page 12; What to do if ...
- If you require advice, even during the warranty period, you **will** incur costs for the call-out of a technician.
- You can find your nearest customer service in the enclosed list. Please give customer service the product number (E-Nr.) and the production number (FD) of the appliance.

E-Nr. _____ FD _____

Product number

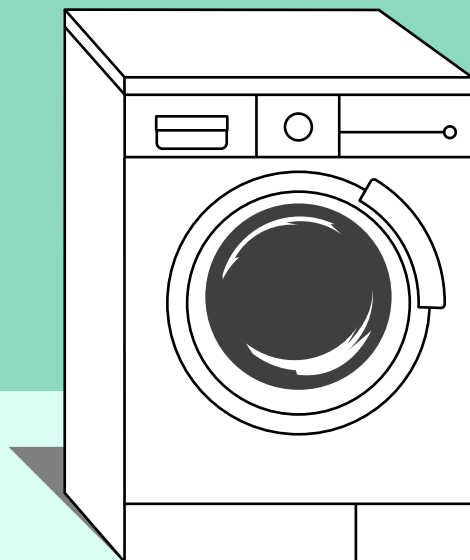
Production number

*This information can be found:
on the inside of the washing machine door*/
opened service flap* and rear of the appliance.
depending on model

- Please help by quoting the product number and production number to prevent unnecessary call-outs. This will save you additional costs.



*Observe the safety
instructions on page 8!*



**Washing
machine**

Instruction manual

en



**Do not switch on the washing machine until
you have read these instructions and the
separate installation instructions!**

SIEMENS