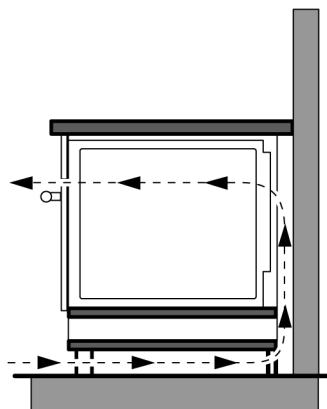
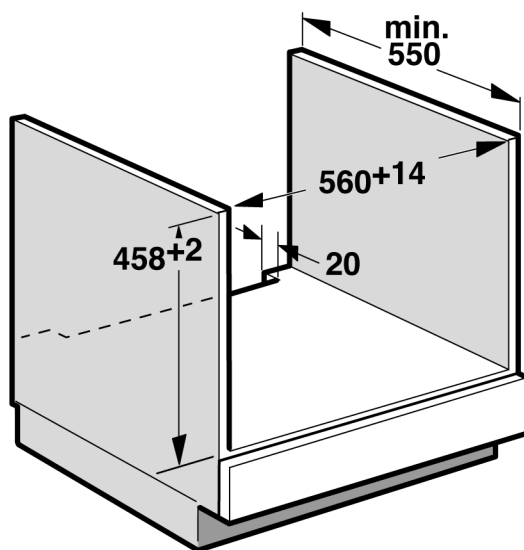
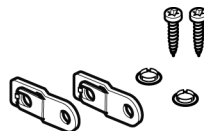
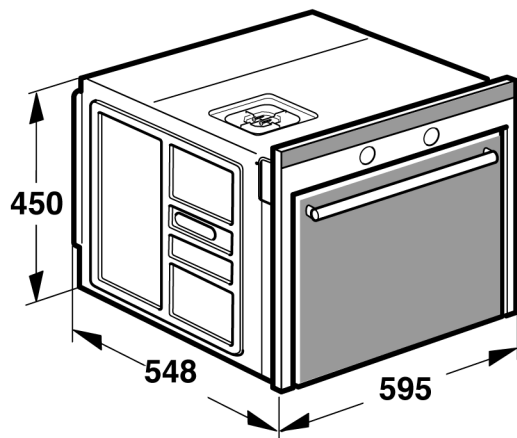


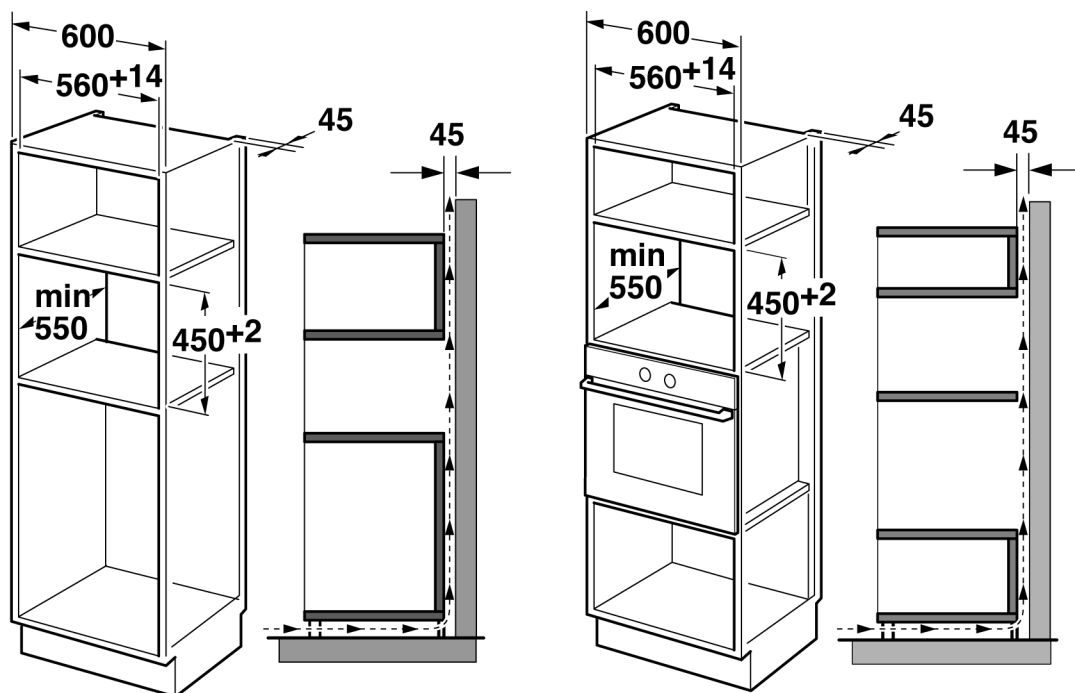
en Installation Instructions

please keep

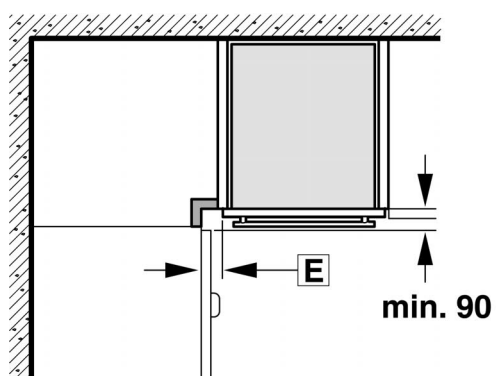
1



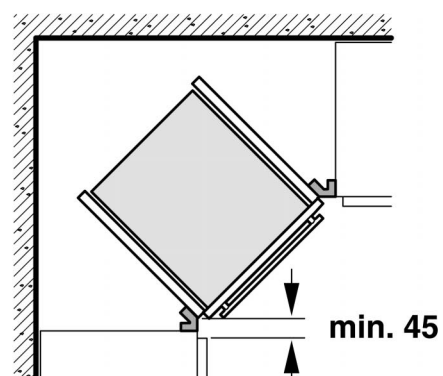
2



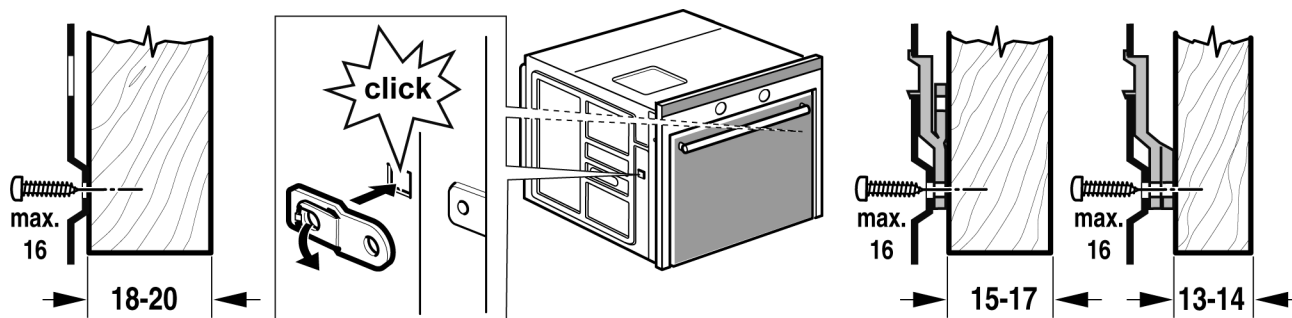
3



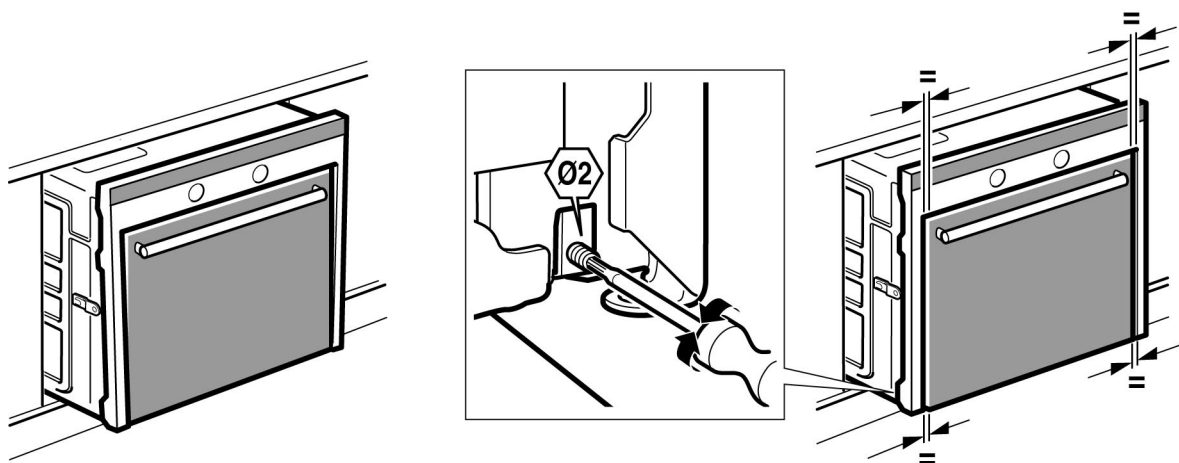
D



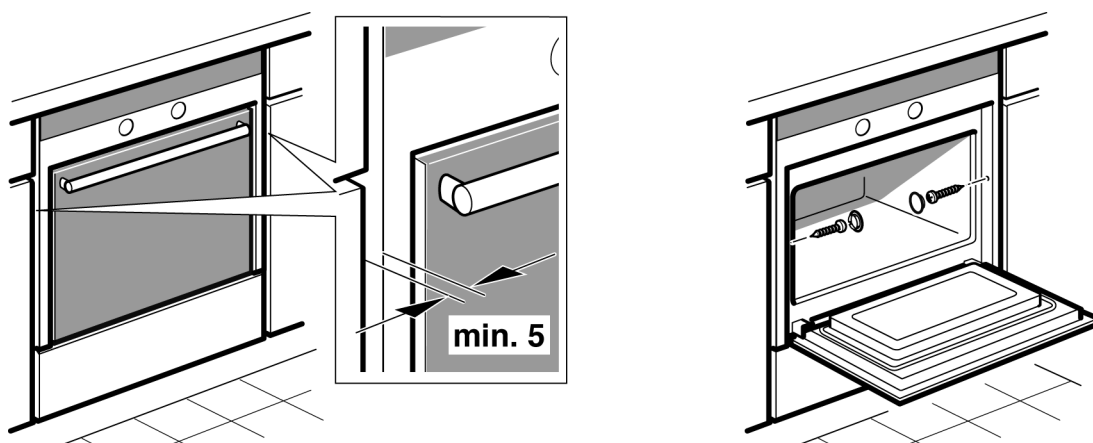
4



5



6



Pay attention to the following:

Electrical connection

The appliance is ready to plug in and must only be connected to a properly installed protective contact socket. The socket must only be installed and the connecting cable must only be replaced by a qualified electrician, and in accordance with the appropriate regulations.

If the plug is no longer accessible following installation, an all-pole isolating switch must be present on the installation side with a contact gap of at least 3 mm.

Contact protection must be ensured by the installation.

Great Britain and Australia:

The appliance is designed for permanent connection to a 3-wire cable.

The appliance must only be connected by a qualified electrician in accordance with the wiring diagram attached to the connecting cable.

An all-pole disconnecting device must be present on the installation side with a contact gap of at least 3 mm in order to comply with current safety regulations.

In accordance with heating testing standards, the appliance corresponds to Safety Class "Y".

The wires in the mains lead are coloured in accordance with the following code:

Green and Yellow	Earth
Blue	Neutral
Brown	Live

Do not connect the appliance using a 13A plug or protect it with a 13A fuse.

Fitted units

The installation cabinet must not have a back panel behind the appliance. A gap of at least 45 mm must be maintained between the wall and the base or back panel of the unit above.

The installation cabinet must have a ventilation opening of 50 cm² on the front. For surround units with no ventilation cut-out in the back of the side panels 200 cm². To do this, cut back the base panel or fit a ventilation grille.

Ventilation slots and intakes must not be covered.

The safe operation of this appliance can only be guaranteed if it has been installed in accordance with these installation instructions. The installer is liable for losses incurred as a result of incorrect installation.

Fitted units must be heat-resistant up to 90 °C, and adjacent unit fronts up to at least 70 °C.

Cut out the units and the work surface before fitting the appliances. Remove shavings as they can affect the function of electrical components.

Oven under the work surface - Figure 1

A ventilation cut-out must be made in the intermediate floor of the surround unit - see Figure 1.

If the appliance is being installed beneath a hob, observe the hob assembly instructions.

Appliance in a tall unit - Figure 2

The appliance may only be fitted above a ventilated oven from the same manufacturer.

It is possible to fit the hob over a refrigerator.

The appliance must not be fitted above a steamer, combination steam oven or a dishwasher.

Corner installation - Figure 3

To ensure that the appliance door can be opened in the case of corner installation, take account of dimension **D**.

Dimension **E** is dependent on the thickness of the unit front under the handle.

Preparing for installation - Figure 4 and 5

- If necessary, fit the spacer - Figure 4.
- If necessary, adjust the gap between the appliance door and the appliance frame - Figure 5.

Securing the appliance - Figure 6

- Fully insert the appliance and centre it.
- Do not kink the connecting cable.
- Screw the appliance into place.
- The gap between the worktop and the appliance must not be closed using additional battens.

Removal

Disconnect the appliance from the power supply. Undo the securing screws. Raise the appliance slightly and pull it out completely.