

# Your washing machine

**Congratulations** – You have opted for a modern, high-quality domestic appliance manufactured by Siemens. The washing machine is distinguished by its economical use of water and energy.

Each appliance which leaves our factory is inspected thoroughly to ensure that it functions properly and is in perfect condition.

For further information and a selection of our products go to our web site: <http://www.siemens-international.com> or contact our customer service centres.

## Contents

	Page
■ Intended use	1
■ Programmes	1
■ Set and adjust programme	3
■ Washing	3/4
■ After washing	4
■ Individual settings	5
■ Important information	6
■ Overview of programmes	7
■ Safety instructions	8
■ Consumption values	8
■ Care	9
■ Information on the display panel	9
■ Maintenance	10
■ What to do if ...	11

## Protection of the environment/ Conservation tips

- Utilise the maximum amount of washing for the particular programme.
- Wash normally soiled washing without prewash.
- Instead of **Ανθεκτικά/Χρωματιστά** (Cottons/Coloureds) **90 °C** programme, select **Χρωματιστά Eco** (Coloureds eco) **60 °C** and additional function **Εντατικό** (Intensive Wash). Comparable cleaning result with significantly lower energy consumption.
- Meter detergent according to the manufacturer's instructions and water hardness.
- If the washing is then dried in the tumble dryer, select spin speed according to the instructions of the dryer manufacturer.

## Intended use

- for use in the household only,
- for the washing of machine-washable textiles in a detergent solution,
- to be operated with cold drinking water and commercially available detergents and care products which are suitable for use in washing machines.

- ⚠ Do not leave children unattended near the washing machine!
- Keep pets away from the washing machine!

### Programmes

Detailed programme overview → *Page 7*.  
Temperature and spin speed can be selected individually, irrespective of the selected programme and programme progress.

<b>Ανθεκτικά/ Χρωματιστά</b> (Cottons/Coloureds)	} Hard-wearing textiles
<b>Χρωματιστά Eco</b> (Coloureds eco)	
<b>PowerWash 60'</b>	
<b>Ευαίσθητα</b> (Easy-Care) easy care textiles	
<b>Ανάμεικτα</b> (Mixed Fabrics)	different types of washing
<b>Μεταξωτά</b> (Delicate/Silk)	delicate washable textiles
<b>Μάλλινα</b> (Wool)	hand-/machine-washable wool
<b>Ξέβγαλμα</b> (Rinse)	extra rinse with spin
<b>Στύψιμο</b> (Spin)	extra spin with selectable spin speed
<b>Άντληση</b> (Empty)	the rinsing water with Ø (Rinse stop = without final spin)
<b>Μειωμένες στροφές</b> (Low Spin)	washing washed by hand at reduced spin speed
<b>Γρήγορο 15'</b> (Rapid 15')	short programme
<b>Outdoor</b> (Outdoor Wear)	weather, sport and outdoor textiles → <i>Page 6</i>
<b>Πουκάμισα/ Business wear</b> (Shirts/Business)	non-iron shirts
<b>Σκουρόχρωμα</b> (Easy-Care Dark)	dark textiles

## Preparation

⚠ *Correct installation according to separate Installation instructions.*

### Checking the machine

- Never switch on a damaged machine!
- Inform your customer service!

### Insert mains plug

⚠ *With dry hands only! Take hold of the plug only!*

### Turn on the tap

*Insert for liquid detergent (depending on model), Page 9.*

**Compartment II:** Detergent for the main wash, water softener, bleach, stain remover

**Compartment I:** Detergent for pre-wash

### Sorting and inserting the washing

Follow manufacturer's care information! According to the information on the care labels. According to type; colour; soiling and temperature. Do not exceed maximum load → *Page 7*.

Follow Important instructions → *Page 6!*

Insert large and small items of washing! Close the washing machine door. Take care not to trap any items of clothing between the loading door and rubber seal.

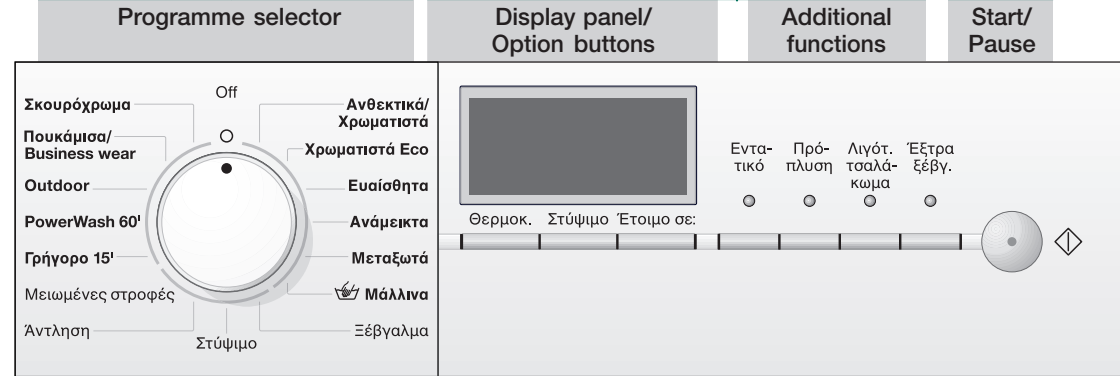
### Add detergent and care product

Meter accordingly: Washing amount, soiling, water hardness (ask your water supply company) and manufacturer's instructions. Models without insert for liquid detergent: Pour liquid detergent into the appropriate dispenser and place in the drum. During operation: Caution when opening the detergent drawer!

**i** Dilute viscous fabric softener and fabric conditioner with water. This prevents blockages.

## Set and adjust programme

For additional functions and option buttons see individual settings → *Page 5*.



**i** Programme selector for switching the machine on and off and for selecting the programme. Can be rotated in either direction.

<b>⊗ – 90°</b>	<b>Θερμοκ.</b>	Select the temperature (⊗ = cold)
<b>1 – 24h</b>	<b>Στύψιμο</b>	Programme ends in ...
<b>Ø – 1600*</b>	<b>Έτοιμο σε:</b>	Select the spin speed (* depending on model) or Ø (Rinse stop = without final spin)
<b>Status displays</b>		Programme progress displays:
		Washing, Rinse, Spin, End

### Before washing for the first time, wash once without any washing → *Page 6*.

## Washing

Detergent drawer with compartments I, II,

Fascia

Door handle

Service flap

## Washing

## Removing washing

Open washing machine door and remove washing. If (Rinse stop = without final spin) is active: Select the spin speed or set programme selector to **Άντληση** (Empty) or **Στύψιμο** (Spin). Select **Start/Pause**. Remove any foreign objects – risk of rusting.

### Turn off tap

Information on Aqua Stop → *Installation instructions, Page 7*.

### Switch off

Set programme selector to **Off**.

## End of programme when ...

... Select (**Start/Pause**) flashes.

## Change programme ...

If you have mistakenly selected a wrong programme:  
– Reselect programme.  
– Select (**Start/Pause**).

## Cancel programme ...

- Select (**Start/Pause**).
- If required, top up washing (do not leave the door open for too long as water from the washing could run out of the open door)
- Select (**Start/Pause**).

## ... or terminate

Programmes with high temperature:  
– Cool washing: Select **Ξέβγαλμα** (Rinse).  
– Select (**Start/Pause**).  
Programmes at lower temperature:  
– Select **Στύψιμο** (Spin) or **Άντληση** (Empty).  
– Select (**Start/Pause**).

## Individual settings

### Option buttons

You can change the spin speed and temperature beforehand and while the selected programme is running. Effects dependent on the programme progress.

### Θερμοκ. (Temperature)

You can change the indicated washing temperature. The maximum washing temperature which can be selected depends on the set programme.

### Στύψιμο (rpm)

You can change the indicated spin speed. The maximum spin speed which can be selected depends on the set programme.

### Έτοιμο σε: (Ready in)

The respective programme duration is displayed by selecting the programme. The programme start can be delayed before the programme begins. The **Έτοιμο σε** (Ready in)-time can be set in hour-steps up to maximum 24h. Keep pressing the **Έτοιμο σε** (Ready in) button until the required number of hours is indicated (h=hour). Select (**Start/Pause**).

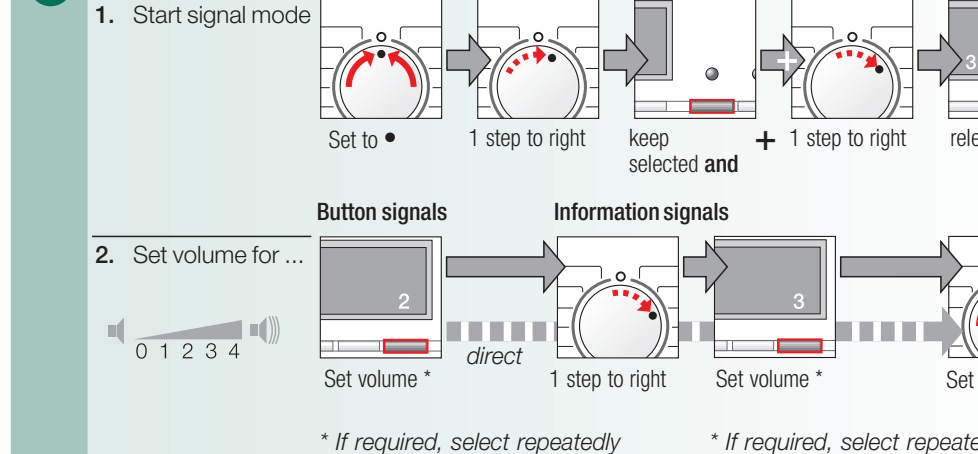
### Additional functions see also programme overview

<b>Εντατικό</b> (Intensive Wash)	Extend the washing time for a more intensive washing of heavily soiled items.
<b>Πρόπλυση</b> (Prewash)	For heavily soiled washing. Prewash at max. 30 °C.
<b>Λιγόν. τσαλάκωμα</b> (Less Ironing)	Special spin sequence with subsequent fluffing. Gentle final spin – residual moisture in the washing increased slightly.
<b>Έξτρα Ξέβγ.</b> (Extra Rinse)	Additional rinse cycle, extended washing time. For areas with very soft water or for further improvement of the rinsing result.

### (**Start/Pause**)

For starting or interrupting the programme.

### Signal



\* If required, select repeatedly

\* If required, select repeatedly

## Important information

### Protecting the washing and the machine

- Empty pockets.
- Remove metal parts (paper clips, etc.).
- Wash delicates in the net/bag (tights, curtains, underwired bras).
- Close zips, button up covers.
- Brush sand out of pockets and collars.
- Remove curtain fittings or include in the net/bag.

### Before washing for the first time,

Do not put any washing in the washing machine! Turn on the tap, fill approx. 1 litre of water and then pour ½ measuring cup of detergent into dispenser II. Set the **Ευαίσθητα** (Easy-Care) **60 °C** programme and select (**Start/Pause**). At the end of the programme set the programme selector to **Off**.

### Washing with different degrees of soiling

Light	Wash new items separately. Do not prewash.
heavy	If required, pretreat stains. Select <b>Εντατικό</b> (Intensive Wash) additional function. Load less washing. Prewash. If required, pretreat stains. Select <b>Εντατικό</b> (Intensive Wash) additional function.

### Soaking Load washing of the same colour

Pour soaking agent/detergent into dispenser II according to the manufacturer's instructions. Set **Ανθεκτικά/Χρωματιστά** (Cottons/Coloureds) **30 °C** programme and select (**Start/Pause**). After approx. 10 minutes select (**Start/Pause**). After the required soaking time reselect (**Start/Pause**), if the programme is to be continued or change the programme.

### Starching Laundry must not be treated with fabric softener

Starching is possible in all wash programmes if liquid starch is used. Add starch to the fabric softener compartment in accordance with the manufacturer's instructions.

### Dyeing/Bleaching

Dye in small quantities only. Salt can corrode stainless steel. Observe the dye manufacturer's specifications. Do **not** bleach laundry in the washing machine.

### Outdoor Washing must not be treated with fabric softener.

Special detergents suitable for a machine-wash available in particular from specialist sports shops. Dose detergent according to manufacturers' specifications. Fill dispenser II with special detergent for outdoor textiles. Turn the programme selector to **Outdoor** (Outdoor Wear). Select temperature. Select (**Start/Pause**).

### Emergency release, e.g. in the event of a power failure

The programme continues to run when the power has been restored. However, if the laundry has to be removed, the washing machine door can be opened as follows:  
**⚠ Risk of scalding. The detergent solution and laundry may be hot. If possible, leave it to cool down. Do not reach into the drum if it is still rotating. Do not open the washing machine door if water can be seen through the glass.**  
– Set the programme selector to **Off** and disconnect the mains plug.  
– Drain the detergent solution → *Page 10*.  
– Pull the emergency release with a tool and release. The washing machine door can then be opened.





# Your washing machine

**Congratulations** – You have opted for a modern, high-quality domestic appliance manufactured by Siemens. The washing machine is distinguished by its economical use of water and energy. Each appliance which leaves our factory is inspected thoroughly to ensure that it functions properly and is in perfect condition.

For further information and a selection of our products go to our web site: <http://www.siemens-international.com> or contact our customer service centres.

## Contents

Page

Intended use	1
Programmes	1
Set and adjust programme	3
Washing	3/4
After washing	4
Individual settings	5
Important information	6
Overview of programmes	7
Safety instructions	8
Consumption values	8
Care	9
Information on the display panel	9
Maintenance	10
What to do if ...	11



### Protection of the environment/ Conservation tips

- Utilise the maximum amount of washing for the particular programme.
- Wash normally soiled washing without prewash.
- Instead of **Ανθεκτικά/Χρωματιστά** (Cottons/Coloureds) 90 °C programme, select **Χρωματιστά Eco** (Coloureds eco) 60 °C and additional function **Ενταπικό** (Intensive Wash). Comparable cleaning result with significantly lower energy consumption.
- Meter detergent according to the manufacturer's instructions and water hardness.
- If the washing is then dried in the tumble dryer, select spin speed according to the instructions of the dryer manufacturer.

## Intended use

- for use in the household only,
- for the washing of machine-washable textiles in a detergent solution,
- to be operated with cold drinking water and commercially available detergents and care products which are suitable for use in washing machines.

- Do not leave children unattended near the washing machine!
- Keep pets away from the washing machine!

### Programmes

Detailed programme overview → Page 7.  
Temperature and spin speed can be selected individually, irrespective of the selected programme and programme progress.

**Ανθεκτικά/Χρωματιστά**  
(Cottons/Coloureds) } Hard-wearing textiles

**Χρωματιστά Eco**  
(Coloureds eco) ...

**PowerWash 60'** ...

**Ευαίσθητα**  
(Easy-Care) easy care textiles

**Ανάμεικτα**  
(Mixed Fabrics) ..... different types of washing

**Μεταξωτά**  
(Delicate/Silk) ..... delicate washable textiles

**Μάλλινα** (Wool) .. hand-/machine-washable wool

**Ξέβγαλμα** (Rinse) ... extra rinse with spin

**Στύψιμο** (Spin) ..... extra spin with selectable spin speed

**Άντληση** (Empty) ... the rinsing water with Ø  
(Rinse stop = without final spin)

**Μειωμένες στροφές**,  
(Low Spin) ..... washing washed by hand at reduced spin speed

**Γρήγορο 15'**  
(Rapid 15') ..... short programme

**Outdoor**  
(Outdoor Wear) ..... weather, sport and outdoor textiles → Page 6

**Πουκάμισα/ Business wear**  
(Shirts/Business) ..... non-iron shirts

**Σκουρόχρωμα**  
(Easy-Care Dark) ..... dark textiles

## Preparation



Correct installation according to separate Installation instructions.



### Checking the machine

- Never switch on a damaged machine!
- Inform your customer service!



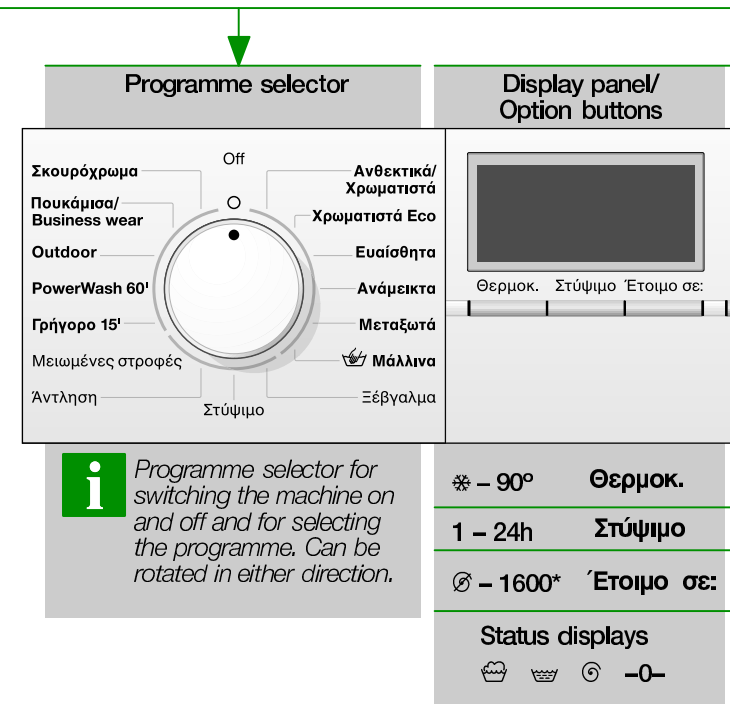
### Insert mains plug

- With dry hands only!  
Take hold of the plug only!



### Turn on the tap

Insert for liquid detergent (depending on model), Page 9.  
**Compartment II:** Detergent for the main wash, water softener, bleach, stain remover  
**Compartment ♂:** Fabric softener, starch  
**Compartment I:** Detergent for pre-wash



Programme selector for switching the machine on and off and for selecting the programme. Can be rotated in either direction.

✱ – 90° Θερμοκ.  
1 – 24h Στύψιμο  
Ø – 1600\* Έτοιμο σε:  
Status displays  
🧺 🧺 ⌚ –0–



*Before washing for the first time,  
wash once without any washing -> Page 6.*

## Sorting and inserting the washing

Follow manufacturer's care information!  
According to the information on the care labels.  
According to type; colour; soiling and temperature.  
Do not exceed maximum load -> Page 7.

*Follow Important instructions -> Page 6!*

Insert large and small items of washing! Close the washing machine door. Take care not to trap any items of clothing between the loading door and rubber seal.

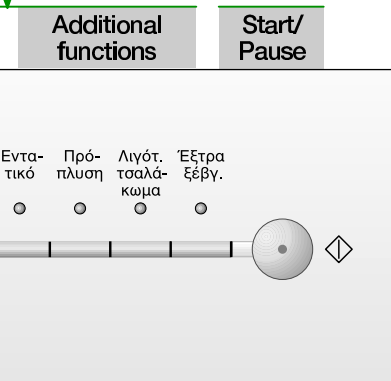
## Add detergent and care product

Meter accordingly:  
Washing amount, soiling, water hardness (ask your water supply company) and manufacturer's instructions.  
Models without insert for liquid detergent: Pour liquid detergent into the appropriate dispenser and place in the drum.  
During operation: Caution when opening the detergent drawer!

**i** Dilute viscous fabric softener and fabric conditioner with water. This prevents blockages.

## Set and adjust programme

*For additional functions and option buttons see individual settings -> Page 5.*



**i** All buttons are sensitive and a gentle tap is adequate!  
If the option buttons are touched for longer, the setting options run automatically!

Select (Start/Pause)

Select the temperature (\* = cold)

Programme ends in ...

Select the spin speed (\* depending on model) or (Rinse stop = without final spin)

Programme progress displays:  
Washing, Rinse, Spin, End

# Washing

Detergent drawer with compartments I, II,

The washing machine door

Fascia

Door handle

Service flap

# Washing

## Removing washing

Open washing machine door and remove washing.  
If (Rinse stop = without final spin) is active:  
Select the spin speed or set programme selector to **Άντληση** (Empty) or **Στύψιμο** (Spin).  
Select **Start/Pause**.  
Remove any foreign objects – risk of rusting.

## Turn off tap

Information on Aqua Stop  
-> Installation instructions, Page 7.

## Switch off

Set programme selector to **Off**.

## End of programme when ...

... Select (Start/Pause) flashes.

## Change programme ...

If you have mistakenly selected a wrong programme:  
– Reselect programme.  
– Select (Start/Pause).

## Cancel programme ...

– Select (Start/Pause) .  
– If required, top up washing (do not leave the door open for too long as water from the washing could run out of the open door)  
– Select (Start/Pause) .

## ... or terminate

Programmes with high temperature:  
– Cool washing: Select **Ξέβγαλμα** (Rinse).  
– Select (Start/Pause).  
Programmes at lower temperature:  
– Select **Στύψιμο** (Spin) or **Άντληση** (Empty).  
– Select (Start/Pause).

# Individual settings

## Option buttons

You can change the spin speed and temperature beforehand and while the selected programme is running. Effects dependent on the programme progress.

### Θερμ. (Temperature)

You can change the indicated washing temperature. The maximum washing temperature which can be selected depends on the set programme.

### Στύψιμο (rpm)

You can change the indicated spin speed. The maximum spin speed which can be selected depends on the set programme.

### Έτοιμο σε: (Ready in)

The respective programme duration is displayed by selecting the programme. The programme start can be delayed before the programme begins. The Έτοιμο σε (Ready in)-time can be set in hour-steps up to maximum 24h. Keep pressing the Έτοιμο σε (Ready in) button until the required number of hours is indicated (h=hour). Select ◀ (Start/Pause).

## Additional functions *see also programme overview*

**Ενταπικό** (Intensive Wash) Extend the washing time for a more intensive washing of heavily soiled items.

**Πρόπλυση** (Prewash) For heavily soiled washing. Prewash at max. 30 °C.

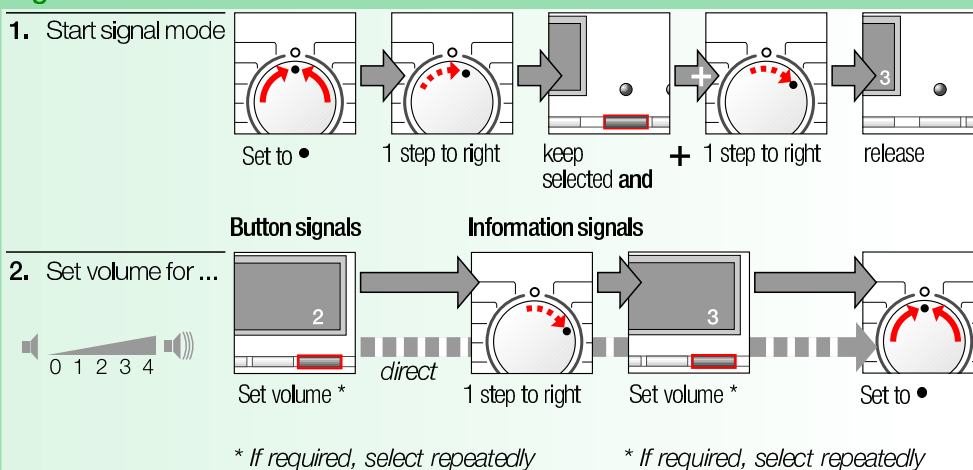
**Λιγ. τσαλάκωμα** (Less Ironing) Special spin sequence with subsequent fluffing. Gentle final spin – residual moisture in the washing increased slightly.

**Έξτρα ξέβγ.** (Extra Rinse) Additional rinse cycle, extended washing time. For areas with very soft water or for further improvement of the rinsing result.

### ◀ (Start/Pause)

For starting or interrupting the programme.

## Signal



# Important information



## Protecting the washing and the machine

- Empty pockets.
- Remove metal parts (paper clips, etc.).
- Wash delicates in the net/bag (tights, curtains, underwired bras).
- Close zips, button up covers.
- Brush sand out of pockets and collars.
- Remove curtain fittings or include in the net/bag.



## Before washing for the first time,

Do not put any washing in the washing machine! Turn on the tap, fill approx. 1 litre of water and then pour ½ measuring cup of detergent into dispenser II. Set the **Ευαίσθητα** (Easy-Care) 60 °C programme and select ◀ (Start/Pause). At the end of the programme set the programme selector to Off.



## Washing with different degrees of soiling

Light	Wash new items separately. Do not prewash.
—	If required, pretreat stains. Select <b>Ενταπικό</b> (Intensive Wash) additional function.
heavy	Load less washing. Prewash. If required, pretreat stains. Select <b>Ενταπικό</b> (Intensive Wash) additional function.



## Soaking

*Load washing of the same colour*

Pour soaking agent/detergent into dispenser II according to the manufacturer's instructions. Set **Ανθεκτικά/Χρωματιστά** (Cottons/Coloureds) 30 °C programme and select ◀ (Start/Pause). After approx. 10 minutes select ◀ (Start/Pause). After the required soaking time reselect ◀ (Start/Pause), if the programme is to be continued or change the programme.



## Starching

*Laundry must not be treated with fabric softener*

Starching is possible in all wash programmes if liquid starch is used. Add starch to the fabric softener compartment ⌘ in accordance with the manufacturer's instructions.



## Dyeing/Bleaching

Dye in small quantities only. Salt can corrode stainless steel. Observe the dye manufacturer's specifications. Do **not** bleach laundry in the washing machine.



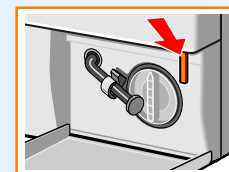
## Outdoor

*Washing must not be treated with fabric softener.*

Special detergents suitable for a machine-wash available in particular from specialist sports shops. Dose detergent according to manufacturers' specifications. Fill dispenser II with special detergent for outdoor textiles. Turn the programme selector to **Outdoor** (Outdoor Wear). Select temperature. Select ◀ (Start/Pause).



## Emergency release, e.g. in the event of a power failure







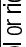
The programme continues to run when the power has been restored. However, if the laundry has to be removed, the washing machine door can be opened as follows:



*Risk of scalding.  
The detergent solution and laundry may be hot.  
If possible, leave it to cool down.  
Do not reach into the drum if it is still rotating.  
Do not open the washing machine door if water can be seen through the glass.*

- Set the programme selector to **Off** and disconnect the mains plug.
- Drain the detergent solution → Page 10.
- Pull the emergency release with a tool and release. The washing machine door can then be opened.

## Programme overview → Pay attention to the Consumption values table on page 8 and the information on page 6.

Programmes	°C	max.	Type of washing	   	Additional functions; information
<b>Ανθεκτικά/Χρωματιστά</b> (Cottons/Coloureds)	❖ – 90	8.0 kg*	Hard-wearing textiles, heat-resistant textiles made of cotton or linen		<b>Εντατικό</b> (Intensive Wash), <b>Πρόπλυση</b> (Prewash), <b>Λιγότερο ταλικάωμα</b> (Less Ironing), <b>Έξτρα ξέβγ.</b> (Extra Rinse)
<b>Χρωματιστά Eco</b> (Coloureds eEco)	❖ – 60				
<b>PowerWash 60'</b>	❖ – 60	5.0 kg*	Hard-wearing textiles made of cotton or blended fabric		Time-controlled programme, short programme for normally soiled laundry
<b>Ευαίσθητα Συνθετικά</b> (Easy-Care)	❖ – 60	3.5 kg*	Easy-care textiles made of cotton, linen, synthetic fibres or blended fabrics		<b>Λιγότερο ταλικάωμα</b> (Less Ironing), <b>Έξτρα ξέβγ.</b> (Extra Rinse)
<b>Ανάμεικτα</b> (Mixed Fabrics)	❖ – 40		Textiles made of cotton and easy-care textiles		<b>Εντατικό</b> (Intensive Wash), <b>Πρόπλυση</b> (Prewash), <b>Λιγότερο ταλικάωμα</b> (Less Ironing), <b>Έξτρα ξέβγ.</b> (Extra Rinse); different types of washing can be washed together
<b>Σκουρόχρωμα</b> (Easy-Care Dark)			Dark textiles made of cotton and dark easy-care textiles		<b>Εντατικό</b> (Intensive Wash), <b>Πρόπλυση</b> (Prewash), <b>Λιγότερο ταλικάωμα</b> (Less Ironing), <b>Έξτρα ξέβγ.</b> (Extra Rinse); reduced rinse and final spin cycle
<b>Πουκάμισα/Business wear</b> (Shirts/Business)	❖ – 60		Non-iron shirts made of cotton, linen, synthetics fibres or blended fabrics		<b>Εντατικό</b> (Intensive Wash), <b>Πρόπλυση</b> (Prewash), <b>Έξτρα ξέβγ.</b> (Extra Rinse); only short spin, peg out dripping wet
<b>Μεταξωτά</b> (Delicate/Silk)	❖ – 40	2,0 kg	For delicate, washable textiles, eg. made of silk, satin, synthetic fibres or blended fabrics (e.g. curtains)		<b>Εντατικό</b> (Intensive Wash), <b>Πρόπλυση</b> (Prewash), <b>Λιγότερο ταλικάωμα</b> (Less Ironing), <b>Έξτρα ξέβγ.</b> (Extra Rinse); only short spin between the rinse cycles
<b>Μάλλινα</b>  (Wool)			Hand or machine washable wool or rich-wool textiles		Particularly gentle wash programme to avoid shrinkage, longer programme breaks (fabrics rest in the detergent solution)
<b>Γρήγορο 15'</b> (Rapid 15')	❖ – 40		Easy-care textiles made of cotton, linen, synthetic fibres or blended fabrics		Short programme approx. 15 minutes, suitable for lightly soiled laundry
<b>Outdoor</b> (Outdoor Wear)			Weather, sport and outdoor textiles also with climate protection membrane		<b>Εντατικό</b> (Intensive Wash), <b>Λιγότερο ταλικάωμα</b> (Less Ironing), <b>Έξτρα ξέβγ.</b> (Extra Rinse); reduced final spin at intervals
<b>Additional programmes</b>					<b>Ξέβγαλμα</b> (Rinse), <b>Στύψιμο</b> (Spin), <b>Άντληση</b> (Empty), <b>Μειωμένες στροφές</b> , (Low Spin)

**i** The programmes are time-controlled for lightly soiled textiles. If textiles are heavily soiled, select additional functions **Εντατικό** (Intensive Wash). When washing the maximum load for programmes marked with \*, always select the additional **Εντατικό** (Intensive Wash) function. Regardless of the type of washing, **Ευαίσθητο Συνετικό** (Easy-Care) **40 °C** with maximum spin speed is the best short programme for the job. Programmes without prewash – pour detergent into dispenser **II**, programmes with prewash – divide detergent between dispensers **I** and **II**.

Siemens-Electrogeräte GmbH  
Carl-Wery-Str. 34  
81739 München/Germany

9000 237 316  
1107

MM10S420GR

## **Safety instructions**

- Read and follow the operating and installation instructions and all other information enclosed with the washing machine.
- Retain documents for subsequent use.

### Risk of electric shock

- Never pull out the mains plug by tugging the power cord!
- Never insert/pull out the mains plug with damp hands.

### Danger to life

Redundant appliances:

- Pull out the mains plug.
  - Sever the power cord and discard together with the plug.
  - Destroy the lock on the washing machine door.
- This will prevent children from locking themselves in and suffocating.

### Risk of suffocation

- Keep packaging, plastic film and packaging parts out of the reach of children.



### Risk of poisoning

- Keep detergents and care products out of the reach of children.
- Caused by detergents containing solvents, e.g. stain remover/items of washing pretreated with solvent naphtha may result in an explosion after being loaded into the washing machine. Before hand thoroughly rinse items of washing by hand.

### Risk of injury

- Washing machine door may become very hot.
- Caution when draining hot detergent solution.
- Do not climb on the washing machine.
- Do not lean on the open washing machine door.
- Do not touch the drum in case it is still spinning.

## Consumption values

Programme	Additional function	Load	Current**	Water**	Programme duration**
<b>Ανθεκτικά/Χρωμασιτά</b> (Cottons/Coloureds) 30 °C*	<b>Εντατικό</b> (Intensive Wash)	8,0 kg	0.61 kWh	80 l	2:12 h
<b>Ανθεκτικά/Χρωμασιτά</b> (Cottons/Coloureds) 40 °C*	<b>Εντατικό</b>	8,0 kg	0.94 kWh	80 l	2:12 h
<b>Ανθεκτικά/Χρωμασιτά</b> (Cottons/Coloureds) 60 °C*	<b>Εντατικό</b>	8,0 kg	1.65 kWh	80 l	2:12 h
<b>Χρωμασιτά Eco</b> (Coloureds eco) 60 °C*	<b>Εντατικό</b>	8,0 kg	1.36 kWh	56 l	2:15 h
<b>Ανθεκτικά/Χρωμασιτά</b> (Cottons/Coloureds) 90 °C	<b>Εντατικό</b>	8,0 kg	2.73 kWh	97 l	2:12 h
<b>Ευαίσθητα</b> (Easy-Care) 40 °C*	<b>Εντατικό</b>	3,5 kg	0.55 kWh	53 l	1:12 h
<b>Ευαίσθητα</b> (Easy-Care) 40 °C* (also suitable as <b>Short programme</b> )	–	3,5 kg	0.54 kWh	53 l	0:45 h
<b>Μεταξωτά</b> (Delicate/Silk) ❄ (cold)	–	2,0 kg	0.03 kWh	39 l	0:40 h
<b>Μεταξωτά</b> (Delicate/Silk) 30 °C	–	2,0 kg	0.20 kWh	39 l	0:40 h
 <b>Μάλλινα</b> (Wool) ❄ (cold)	–	2,0 kg	0.08 kWh	47 l	0:36 h
 <b>Μάλλινα</b> (Wool) 30 °C	–	2,0 kg	0.20 kWh	47 l	0:36 h

\* Programme setting to be tested in accordance with European standard 60 456.

Note on comparative tests: test the test programme with maximum load, **Ενταστικό** (Intensive Wash) additional function selected, maximum spin speed.

A **short programme** which can be used for coloured items is **Ευαίσθητα (Easy-Care) 40 °C**, with the **Εντατικό (Intensive Wash)** additional function selected and set to maximum spin speed.

\*\* The values deviate from the indicated values depending on water pressure, water hardness, water inlet temperature, room temperature, type and amount of washing and degree of soiling, utilised detergent, fluctuations in the mains voltage and selected additional functions.

# Care



- Risk of electric shock! Pull out the mains plug!
- Risk of explosion! No solvents!



## Machine housing, control panel

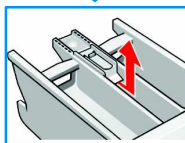
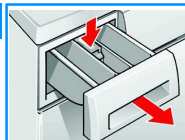
- Wipe with a soft, damp cloth.
- Do not use any abrasive cloths, sponges or cleaning agents (stainless-steel cleaner).
- Immediately remove washing and cleaning agent residue.
- Do not clean the appliance with a water jet.



## Clean the detergent drawer ...

... if it contains detergent or fabric softener residue.

1. Pull out, depress insert, completely remove. Remove insert: Press insert upwards with finger.
2. Clean detergent dispenser and insert with water and a brush and dry.
3. Attach insert and engage (connect cylinder to guide pin).
4. Insert detergent drawer.



Leave detergent drawer open so that residual water can evaporate.



## Drum

Leave washing machine door open so that the drum can dry out.  
Rust stains – use chlorine-free cleaning agent, not steel wool.



## Descaling No washing in the machine!

Not necessary if detergent dispensed correctly. However, follow the instructions of the descaler manufacturer.



## Insert for liquid detergent

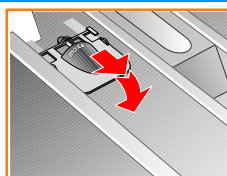
depending on model

Position insert for dispensing liquid detergent:

- Completely remove the detergent drawer -> Page 9.
- Push insert forwards.

Do not use insert (push up):

- for gelatinous detergents and washing powders;
- for programmes with Prewash and ⏻ (Finish in) option.



# Information on the display panel depending on model

F: 16	Close the washing machine door properly; washing may be caught.
F: 17, 29	Turn the tap on fully, supply hose kinked/jammed; Clean filter -> Page 10; water pressure too low.
F: 18	Clean detergent solution pump -> Page 10; outlet pipe/drainage hose blocked.
F: 23	Water in the base pan, appliance leaking. Call customer service!
F: 42, 43, 44	Motor fault. Call customer service!
Other displays	Switch off the appliance, wait for 5 seconds and switch it back on. If the display appears again, call customer services -> Installation instructions, Page 7.

# Maintenance



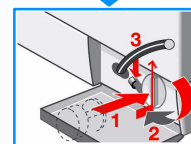
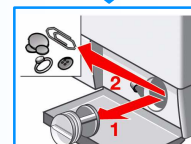
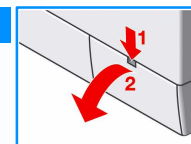
- Risk of scalding! Allow detergent solution to cool down!
- Turn off the tap!



## Detergent solution pump

Set programme selector to **Off**, pull out the mains plug.

1. Open and remove service flap.
2. Take the drainage hose out of the holder. Remove sealing cap, allow detergent solution to flow out. Put the closing cap back on the hose.
3. Carefully unscrew the pump cover (residual water).
4. Clean the interior, pump cover thread and pump housing (fan impeller in the detergent solution pump must rotate).
5. Re-insert pump cover and screw on tight, handle is upright. Insert the drain hose into the holder.
6. Insert and close service flap.



To prevent unused detergent from flowing into the outlet during the next wash: Pour 1 litre of water into dispenser II and start the **Αντληση** (Empty) programme.



## Filter in the water inlet hose



**Risk of electric shock!** Do not immerse Aqua-Stop safety device in water (contains electric valve).

Release water pressure in the supply hose:

1. Turn off the tap!
2. Select any programme (except **Στύψιμο** (Spin)/**Αντληση** (Empty)).
3. Select ⏻ (**Start/Pause**). Leave programme for approx. 40 seconds.
4. Set programme selector to **Off**. Pull out the mains plug.

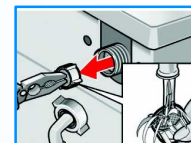
Clean filter:

1. Depending on model:
  - Remove hose from tap.
  - Clean filter with small brush.



or

- Remove hose from the rear.
- Remove filter with pliers and clean.



2. Connect the hose and check for leaks.



# What to do if ...

- Water is running out.

- Correctly attach/replace drainage hose.
  - Tighten screw-fitting on the supply hose.
- Water not flowing in.  
Detergent not washed in.

- ◇ (Start/Pause) not selected?
  - Tap not open?
  - Filter blocked? Clean filter → Page 10.
  - Supply hose kinked or jammed?
- Washing machine door cannot be opened.

- Safety function active. Programme stopped? → Page 4.
  - Ø (Rinse stop = without final spin) selected? → Page 4.
  - Can be opened via emergency release only → Page 6.
- Programme does not start.

- ◇ (Start/Pause) or Έτοιμο σε: (Ready in) selected?
  - Washing machine door closed?
- Detergent solution is not drained.

- Clean detergent solution pump → Page 10.
  - Clean outlet pipe and/or drainage hose.
- Water not visible in the drum.

- Not a fault – water below the visible area.
- Spin result not satisfactory.

- Wash small and large items of washing together.
  - Λιγότερο πασαλάκι (Less Ironing) selected? → Page 5.
  - Too low speed selected? → Page 3.
- Spin cycle actuated several times.

- Not a fault – unbalanced load detection system adjusts imbalance.
- Dispenser ⌘ not completely rinsed out.

- Remove the insert. Clean detergent drawer and insert → Page 9.
- Odour formation in the washing machine.

- Run Ανθεκτικά/Χρωματιστά (Cottons/Coloureds) 90 °C programme without washing. Use standard detergent.
- Foam is coming out of the detergent drawer.

- Too much detergent used?
  - Mix 1 tablespoon of fabric conditioner with ½ litre of water and pour into dispenser II in the detergent drawer.
  - Reduce detergent dosage for the next wash cycle.
- Intense noise formation, vibrations and "wandering" during spin cycle.

- Appliance feet fixed?
  - Secure appliance feet → Installation instructions, Page 5.
  - Transportation safety devices removed?
  - Remove transportation protection devices → Installation instructions, Page 3.
- Display panel/indicator lights do not function while the appliance is running.

- Power failure?
  - Fuse tripped? Switch on/replace fuse.
  - If the fault occurs repeatedly, call customer service.
- Programme progress longer than usual.

- Not a fault – unbalanced load detection system adjusts imbalance by repeatedly distributing the washing.
  - Not a fault – foam detection system active – a rinse cycle is started.
- Detergent residue on the washing.

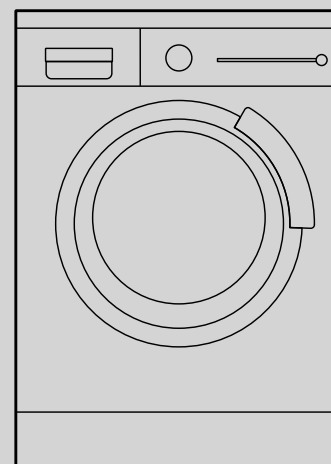
- Occasionally phosphate-free detergents contain water-insoluble residue.
  - Select Ξέβγαλμα (Rinse) or brush the laundry after washing.
- In the pause state ◇ Start/Pause flashes very quickly and a signal sounds.

- Water level too high. Top up washing is not possible.
  - If required, close door immediately.
  - Select "Start/Pause" to continue the programme.
- If a fault cannot be rectified or a repair is required:

- Set programme selector to **Off** and pull out the mains plug.
  - Turn off tap and call customer service → Installation instructions, Page 7.

# SIEMENS

## Operating instructions



**Washing machine**



**Read these instructions before switching on the washing machine!**  
**Also follow the separate Installation instructions.**  
**Follow the safety instructions on page 8!**