

# Your washing machine

**Congratulations** – You have opted for a modern, high-quality domestic appliance manufactured by Siemens. The washing machine is distinguished by its economical use of water and energy. Each appliance which leaves our factory is inspected thoroughly to ensure that it functions properly and is in perfect condition.

## Contents

	Page
■ Intended use	1
■ Programmes	1
■ Set and adjust programme	3
■ Washing	3/4
■ After washing	4
■ Individual settings	5
■ Important information	6
■ Overview of programmes	7
■ Care	8
■ Information on the display panel	8
■ Maintenance	9
■ What to do if ...	10
■ Safety instructions	11
■ Consumption values	11

## Protection of the environment/ Conservation tips

- Utilise the maximum amount of washing for the particular programme.
- Wash normally soiled washing without prewash.
- Instead of **Cottons/Coloureds 90 °C** programme, select **Coloureds eco 60 °C** and additional function **Intensive Wash**. Comparable cleaning result with significantly lower energy consumption.
- Meter detergent according to the manufacturer's instructions and water hardness.
- If the washing is then dried in the tumble dryer, select spin speed according to the instructions of the dryer manufacturer.

## Intended use

- for use in the household only,
- for the washing of machine-washable textiles in a detergent solution,
- to be operated with cold drinking water and commercially available detergents and care products which are suitable for use in washing machines.

- ⚠ – Do not leave children unattended near the washing machine!
- Keep pets away from the washing machine!

## Programmes

Detailed programme overview → Page 7. Temperature and spin speed can be selected individually, irrespective of the selected programme and programme progress.

Cottons/Coloureds	Hard-wearing textiles
Coloureds eco	Hard-wearing textiles
Power Wash 60°	Hard-wearing textiles
Easy-Care	easy care textiles
Mixed/Fabrics	different types of washing
Delicates/Silk	delicate washable textiles
Wool	hand-/machine-washable wool
Rinse	extra rinse with spin
Spin	extra spin with selectable spin speed
Empty	the rinsing water with ∅ (Rinse stop = without final spin)
Low spin	washing washed by hand at reduced spin speed
Rapid 15'	short programme
Outdoor Wear	weather, sport and outdoor textiles
Shirts/Business	non-iron shirts
Easy-Care Dark	dark textiles

## Preparation

⚠ Correct installation according to separate *Installation instructions*.

### Checking the machine

- Never switch on a damaged machine!
- Inform your customer service!

### Insert mains plug

- ⚠ With dry hands only! Take hold of the plug only!

### Turn on the tap

Insert for liquid detergent (depending on model), Page 8.  
II Main wash: Detergent, water softener, bleach, stain remover  
☞ Care products: Fabric softener  
I Prewash: Detergent, starch

## Sorting and inserting the washing

Follow manufacturer's care information! According to the information on the care labels. According to type; colour; soiling and temperature. Do not exceed maximum load → Page 7.

Follow Important instructions → Page 6!

Insert large and small items of washing! Close the washing machine door. Take care not to trap any items of clothing between the loading door and rubber seal.

## Add detergent and care product

Meter accordingly: Washing amount, soiling, water hardness (ask your water supply company) and manufacturer's instructions. Models without insert for liquid detergent: Pour liquid detergent into the appropriate dispenser and place in the drum. During operation: Caution when opening the detergent drawer!

ⓘ Dilute viscous fabric softener and fabric conditioner with water. Prevents blockage of the overflow.

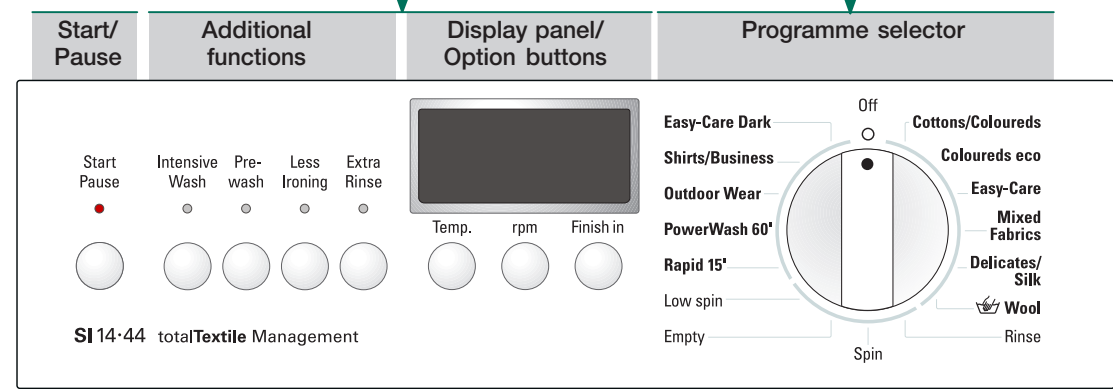
## Set and adjust programme

For additional functions and option buttons see *Individual settings* → Page 5.

ⓘ If the option buttons are touched for longer, the setting options run automatically!

## Select Start/Pause

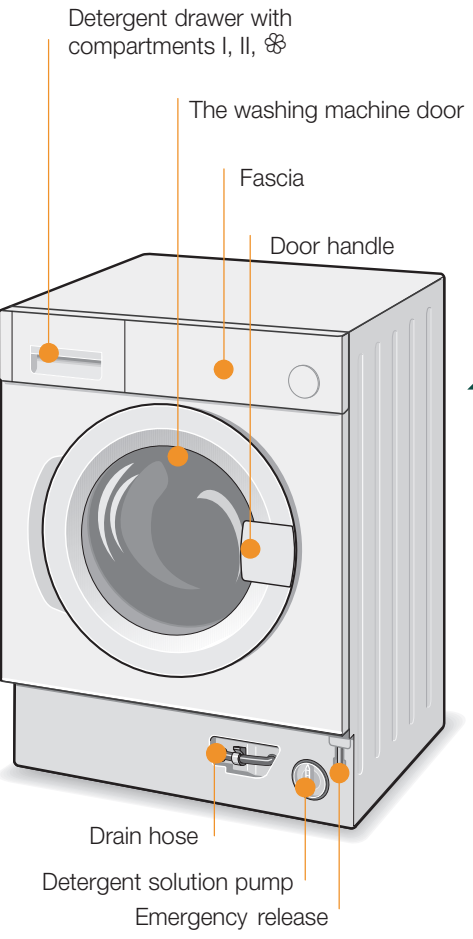
ⓘ Programme selector for switching the machine on and off and for selecting the programme. Can be rotated in either direction.



☼ – 90°	Temp.	Select the temperature (☼ = cold)
∅ – 1600*	rpm.	Select the spin speed (* depending on model) or ∅ (Rinse hold = without final spin)
1 – 24h	Finish in	Programme ends in ...

**Status displays**  
☞ – 0 – Programme progress displays: Washing, Rinse, Spin, End

## Washing



## Washing

## Removing washing

Open washing machine door and remove washing. If ∅ (Rinse stop = without final spin) is active: Select the spin speed or set programme selector to **Empty** or **Spin**. Select **Start**/Pause. Remove any foreign objects – risk of rusting.

## Turn off tap

Information on Aqua Stop → *Installation instructions* → Page 7.

## Switch off

Set programme selector to **Off**.

## End of programme when ...

... - 0 - is indicated on the display panel.

## Change programme ...

If you have mistakenly selected a wrong programme:  
– Reselect programme.  
– Select **Start**/Pause.

## Cancel programme ...

– Select **Start**/Pause.  
– If required, top up the washing (do not leave the door open for too long as water from the washing could run out of the open door)  
– Select **Start**/Pause.

## ... or terminate

Programmes with high temperature:  
– Cool washing: Select **Rinse**.  
– Select **Start**/Pause.  
Programmes at lower temperature:  
– Select **Spin** or **Empty**.  
– Select **Start**/Pause.

## Individual settings

### Option buttons

You can change the spin speed and temperature beforehand and while the selected programme is running. Effects dependent on the programme progress.

#### Temp.

You can change the indicated washing temperature. The maximum washing temperature which can be selected depends on the set programme.

#### rpm

You can change the indicated spin speed. The maximum spin speed which can be selected depends on the set programme.

#### Finish in

The respective programme duration is displayed by selecting the programme. The programme start can be delayed before the programme begins. The **Finish in**-time can be set in hour-steps up to maximum 24h. Keep pressing the **Finish in** button until the required number of hours is indicated (h=hour). Select **Start**/Pause.

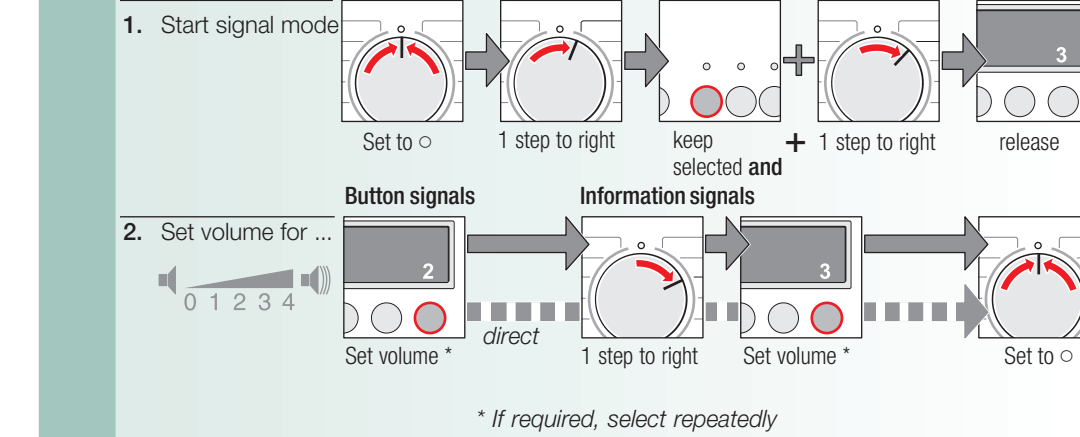
### Additional functions

Intensive Wash	Extend the washing time for a more intensive washing of heavily soiled items.
Prewash	For heavily soiled washing. Prewash at max. 30 °C.
Less Ironing	Special spin sequence with subsequent fluffing. Gentle final spin – residual moisture in the washing increased slightly.
Extra Rinse	Additional rinse cycle, extended washing time. For areas with very soft water or for further improvement of the rinsing result.

### Start/Pause

For starting or interrupting the programme.

### Signal



\* If required, select repeatedly

## Important information

### Protecting the washing and the machine

- Empty pockets.
- Remove metal parts (paper clips, etc.).
- Wash delicates in the net/bag (tights, curtains, underwired bras).
- Close zips, button up covers.
- Brush sand out of pockets and collars.
- Remove curtain fittings or include in the net/bag.

### Before washing for the first time,

Do not put any washing in the washing machine! Turn on the tap, fill approx. 1 litre of water and then pour ½ measuring cup of detergent into dispenser II. Set the **Easy-Care 60 °C** programme and select **Start**/Pause. At the end of the programme set the programme selector to **Off**.

### Washing with different degrees of soiling

Light	Do not prewash.
	If required, pretreat stains. Select <b>Intensive Wash</b> additional function.
heavy	Load less washing. Prewash.
	If required, pretreat stains. Select <b>Intensive Wash</b> additional function.

### Soaking

Load washing of the same colour  
Pour soaking agent/detergent into dispenser II according to the manufacturer's instructions. Set **Cottons/Coloureds 30 °C** programme and select **Start**/Pause. After approx. 10 minutes select **Start**/Pause. After the required soaking time reselect **Start**/Pause, if the programme is to be continued or change the programme.

### Starching

Laundry must not be treated with fabric softener  
Starching is possible in all wash programmes if liquid starch is used. Add starch to the fabric softener compartment ☞ in accordance with the manufacturer's instructions.

### Dyeing/bleaching

Dye in small quantities only. Salt can corrode stainless steel. Observe the dye manufacturer's specifications. Do not bleach laundry in the washing machine.

### Outdoor Wear

Washing must not be treated with fabric softener.  
Special detergents suitable for a machine-wash available in particular from specialist sports shops. Dose detergent according to manufacturers' specifications. Fill dispenser II with special detergent for outdoor textiles. Turn the programme selector to **Outdoor Wear**. Select temperature. Select **Start**/Pause.

### Emergency release, e.g. in the event of a power failure

Programme continues running when the power has been restored. However, if the washing is to be removed, the door can be opened by actuating the emergency release.  
⚠ Risk of scalding!  
The detergent solution and washing may be hot. If required, leave it to cool down. Keep hands clear of the drum if it is still rotating. Do not open the door if water can be seen through the glass.

- Turn the programme selector to **Off** and disconnect it from the power supply.
- Drain the water → page 9.
- Pull the emergency release with a tool, the door can then be opened.

Programmes	°C	max.	Type of washing	Options; information	
Cottons/Coloureds	30 °C*	7,0 kg*	Hard-wearing textiles; heat-resistant textiles made of cotton or linen	Intensive Wash, Prewash, Less Ironing, Extra Rinse	Time-controlled programme for normally soiled laundry
Coloureds eco	30 °C		Hard-wearing textiles made of cotton or blended fabric		
Power Wash 60°	60 °C	5,0 kg		Intensive Wash, Prewash, Less Ironing, Extra Rinse	
Easy-Care	60 °C		Easy-care textiles made of cotton, linen, synthetic fibres or blended fabrics	Intensive Wash, Prewash, Less Ironing, Extra Rinse	
Mixed Fabrics	40 °C	3,5 kg	Textiles made of cotton and easy-care textiles	Intensive Wash, Prewash, Less Ironing, Extra Rinse; different types of washing can be washed together	
Easy-Care Dark			Dark textiles made of cotton and dark easy-care textiles	Intensive Wash, Prewash, Less Ironing, Extra Rinse; reduced rinse and final spin cycle	
Shirts/Business	60 °C		Non-iron shirts made of cotton, linen, synthetics fibres or blended fabrics	Intensive Wash, Prewash, Extra Rinse; only short spin, peg out dripping wet	
Delicates/Silk			For delicate, washable textiles, e.g. made of silk, satin, synthetic fibres or blended fabrics	Intensive Wash, Prewash, Less Ironing, Extra Rinse; only short spin between the rinse cycles	
Wool	40 °C	2,0 kg	Hard or machine washable wool or rich-wool textiles	Particularly gentle wash programme to avoid shrinkage, longer programme breaks (fabrics rest in the detergent solution)	
Rapid 15'			Easy-care textiles made of cotton, linen, synthetic fibres or blended fabrics	Short programme approx. 15 minutes, suitable for lightly soiled laundry	
Outdoor Wear			Weather, sport and outdoor textiles also with climate protection membrane	Intensive Wash, Less Ironing, Extra Rinse; reduced final spin at intervals	
Additional programmes				Rinse, Spin, Empty, Low spin	
i The programmes are time-controlled for lightly soiled textiles. If textiles are heavily soiled, reduce the load or select additional functions, e.g. Programmes without prewash – pour detergent into dispenser II, programmes with prewash – divide detergent between dispensers I and II. Select the <b>Intensive Wash</b> additional function if washing 7,0 kg of cottons and coloureds.					

\* For further information and a selection of our products go to our web site: <http://www.siemensappliances.co.uk> or contact our customer service centres

Siemens-Elektrogeräte GmbH

Carl-Wery-Str. 34

81739 München/Germany

9000 224 627

0807

W114S440GB

## Care



- Risk of electric shock! Pull out the mains plug!
- Risk of explosion! No solvents!

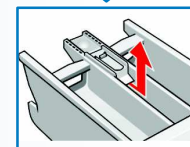
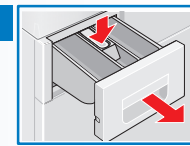
## Machine housing, control panel

- Wipe with a soft, damp cloth.
- Do not use abrasive detergents.
- Immediately remove washing and cleaning agent residue.
- Do not clean the appliance with a water jet.

## Clean the detergent drawer ...

... if it contains detergent or fabric softener residue.

1. Pull out, depress insert, completely remove. Remove insert: Press insert upwards with finger.
2. Clean detergent dispenser and insert with water and a brush and dry.
3. Attach insert and engage (connect cylinder to guide pin).
4. Insert detergent drawer.



Leave detergent drawer open so that residual water can evaporate.

## Drum

Leave washing machine door open so that the drum can dry out. Rust stains – use chlorine-free cleaning agent, not steel wool.

## Descaling

No washing in the machine!

Not necessary if detergent dispensed correctly. However, follow the instructions of the descaler manufacturer.

## Insert for liquid detergent

depending on model

Position insert for dispensing liquid detergent:

- Completely remove the detergent drawer -> Page 8.
- Push insert forwards.

Do not use insert (push up):

- for gelatinous detergents and washing powders;
- for programmes with **Prewash** and **Finish in** option.



## Information on the display panel

depending on model

F: 16	Close the washing machine door properly; washing may be caught.
F: 17, 29	Turn on the tap fully, supply hose kinked/jammed; Clean filter -> Page 9; water pressure too low.
F: 18	Clean detergent solution pump -> Page 9; outlet pipe/drainage hose blocked.
F: 23	Water in the base pan, appliance leaking. Call customer service!
F: 42, 43, 44	Motor fault. Call customer service!
Other displays	Switch off the appliance, wait for 5 seconds and switch it back on. If the display appears again, call customer services -> Installation instructions, Page 7.

## Maintenance

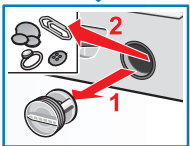


- Risk of scalding! Allow detergent solution to cool down!
- Turn off the tap!

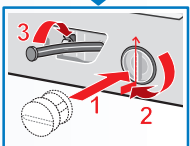
## Detergent solution pump

Set programme selector to **Off**, pull out the mains plug.

1. Take the drainage hose out of the holder. Remove sealing cap, allow detergent solution to flow out. Put the closing cap back on the hose.
2. Carefully unscrew the pump cover (residual water).



3. Clean the interior, pump cover thread and pump housing (fan impeller in the detergent solution pump must rotate).



4. Re-insert pump cover and screw on tight, handle is upright. Insert the drain hose into the holder.

## i

To prevent unused detergent from flowing into the outlet during the next wash: Pour 1 litre of water into dispenser II and start the **Empty** programme.

## Filter in the water inlet hose

**Risk of electric shock!** Do not immerse Aqua-Stop safety device in water (contains electric valve).

Release water pressure in the supply hose:

1. Turn off the tap!
2. Select any programme (**except** Spin/Empty).
3. Select **Start/Pause**. Leave programme for approx. 40 seconds.
4. Set programme selector to **Off**. Pull out the mains plug.

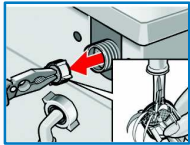
Clean filter:

1. Depending on model: Remove hose from tap. Clean filter with small brush.



or

- Remove hose from the rear. Remove filter with pliers and clean.



2. Connect the hose and check for leaks.

## What to do if ...

- Water is running out. – Correctly attach/replace drainage hose. – Tighten screw-fitting on the supply hose.
- Water not flowing in. Detergent not washed in. – **Start/Pause** not selected? – Tap not open? – Filter blocked? Clean filter -> Page 9. – Supply hose kinked or jammed?
- Washing machine door cannot be opened. – Safety function active. Wait approx. 2 minutes. – Ø (Rinse stop = without final spin) selected? -> Page 4. – Can be opened via emergency release only -> Page 6.
- Programme does not start. – **Start/Pause** or **Finish in** selected? – Washing machine door closed?
- Detergent solution is not drained. – Clean detergent solution pump -> Page 9. – Clean outlet pipe and/or drainage hose.
- Water not visible in the drum. – Not a fault – water below the visible area.
- Spin result not satisfactory. – Wash small and large items of washing together. – **Less Ironing** selected? -> Page 5. – Too low speed selected? -> Page 3.
- Spin cycle actuated several times. – Not a fault – unbalanced load detection system adjusts imbalance.
- Dispenser ⌘ not completely rinsed out. – Remove the insert. Clean detergent drawer and insert -> Page 8.
- Odour formation in the washing machine. – Run **Cottons/Coloureds 90 °C** programme without washing. Use standard detergent.
- Foam is coming out of the detergent drawer. – Too much detergent used? Mix 1 tablespoon of fabric conditioner with ½ litre of water and pour into dispenser II in the detergent drawer. – Reduce detergent dosage for the next wash cycle.
- Intense noise formation, vibrations and "wandering" during spin cycle. – Appliance feet fixed? Secure appliance feet -> Installation instructions, Page 5. – Transportation safety devices removed? Remove transportation protection devices -> Installation instructions, Page 4.
- Display panel/indicator lights do not function while the appliance is running. – Power failure? – Fuse tripped? Switch on/replace fuse. – If the fault occurs repeatedly, call customer service.
- Programme progress longer than usual. – Not a fault – unbalanced load detection system adjusts imbalance by repeatedly distributing the washing. – Not a fault – foam detection system active, a rinse cycle is started.
- Detergent residue on the washing. – Occasionally phosphate-free detergents contain water-insoluble residue. – Select **Rinse** or brush the laundry after washing.
- In the pause state **Start/Pause** flashes very quickly and a signal sounds. – Water level too high. Top up washing is not possible. If required, close door immediately. – Select "Start/Pause" to continue the programme.
- If a fault cannot be rectified or a repair is required: – Set programme selector to **Off** and pull out the mains plug. – Turn off tap and call customer service -> Installation instructions, Page 7.

## Safety instructions

- Read and follow the operating and installation instructions and all other information enclosed with the washing machine.
- Retain documents for subsequent use.

## Risk of electric shock

- Never pull out the mains plug by tugging the power cord!
- Never insert/pull out the mains plug with damp hands.

## Danger to life

- Redundant appliances: – Pull out the mains plug. – Sever the power cord and discard together with the plug. – Destroy the lock on the washing machine door. This will prevent children from locking themselves in and suffocating.

## Risk of suffocation

- Keep packaging, plastic film and packaging parts out of the reach of children.

## Risk of poisoning

## Risk of explosion

- Caused by detergents containing solvents, e.g. stain remover/items of washing pretreated with solvent naphtha may result in an explosion after being loaded into the washing machine. Before hand thoroughly rinse items of washing by hand.

## Risk of injury

- Washing machine door may become very hot.
- Caution when draining hot detergent solution.
- Do not climb on the washing machine.
- Do not lean on the open washing machine door.
- Do not touch the drum in case it is still spinning.

## Consumption values

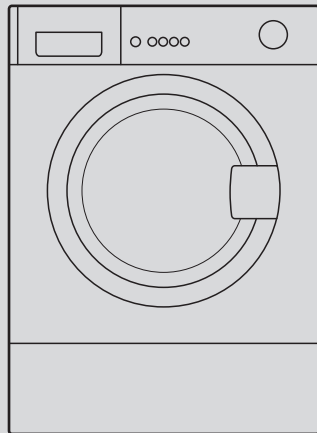
Programme	Additional function	Load	Current**	Water**	Programme duration**
Cottons/Coloureds 30 °C*	Intensive Wash	7.0 kg	0.55 kWh	75 l	2:12 h
Cottons/Coloureds 40 °C*	Intensive Wash	7.0 kg	0.85 kWh	75 l	2:12 h
Cottons/Coloureds 60 °C	Intensive Wash	7.0 kg	1.50 kWh	75 l	2:12 h
Coloureds eco 60 °C*	Intensive Wash	7.0 kg	1.19 kWh	49 l	2:25 h
Cottons/Coloureds 90 °C	Intensive Wash	7.0 kg	2.51 kWh	90 l	2:12 h
Easy-Care 40 °C*	Intensive Wash	3.5 kg	0.55 kWh	55 l	1:12 h
Easy-Care 40 °C (also suitable as <b>Short programme</b> )	-	3.5 kg	0.54 kWh	55 l	0:45 h
Delicates/Silk ⌘ (cold)	-	2.0 kg	0.03 kWh	39 l	0:40 h
Delicates/Silk 30 °C	-	2.0 kg	0.20 kWh	39 l	0:40 h
Wool ⌘ (cold)	-	2.0 kg	0.08 kWh	47 l	0:36 h
Wool 30 °C	-	2.0 kg	0.20 kWh	47 l	0:36 h

\* Programme setting with maximum spin speed for conducting test according to currently valid European Standard 60456.

\*\* The values deviate from the indicated values depending on water pressure, water hardness, water inlet temperature, room temperature, type and amount of washing and degree of soiling, utilised detergent, fluctuations in the mains voltage and selected additional functions.

SIEMENS

## Operating instructions



Washing machine



Read these instructions before switching on the washing machine!Also follow the separate Installation instructions. Follow the safety instructions on page 11!

# Your washing machine

**Congratulations** – You have opted for a modern, high-quality domestic appliance manufactured by Siemens. The washing machine is distinguished by its economical use of water and energy. Each appliance which leaves our factory is inspected thoroughly to ensure that it functions properly and is in perfect condition.

## Contents

Page

Intended use	1
Programmes	1
Set and adjust programme	3
Washing	3/4
After washing	4
Individual settings	5
Important information	6
Overview of programmes	7
Care	8
Information on the display panel	8
Maintenance	9
What to do if ...	10
Safety instructions	11
Consumption values	11



### Protection of the environment/ Conservation tips

- Utilise the maximum amount of washing for the particular programme.
- Wash normally soiled washing without prewash.
- Instead of **Cottons/Coloureds 90 °C** programme, select **Coloureds eco 60 °C** and additional function **Intensive Wash**. Comparable cleaning result with significantly lower energy consumption.
- Meter detergent according to the manufacturer's instructions and water hardness.
- If the washing is then dried in the tumble dryer, select spin speed according to the instructions of the dryer manufacturer.

## Intended use

- for use in the household only,
- for the washing of machine-washable textiles in a detergent solution,
- to be operated with cold drinking water and commercially available detergents and care products which are suitable for use in washing machines.



- Do not leave children unattended near the washing machine!
- Keep pets away from the washing machine!

## Programmes

Detailed programme overview → Page 7.  
Temperature and spin speed can be selected individually, irrespective of the selected programme and programme progress.

Cottons/Coloureds	Hard-wearing textiles
Coloureds eco	Hard-wearing textiles
Power Wash 60'	Hard-wearing textiles
Easy-Care	easy care textiles
Mixed/Fabrics	different types of washing
Delicates/Silk	delicate washable textiles
Wool	hand-/machine-washable wool
Rinse	extra rinse with spin
Spin	extra spin with selectable spin speed
Empty	the rinsing water with Ø (Rinse stop = without final spin)
Low spin	washing washed by hand at reduced spin speed
Rapid 15'	short programme
Outdoor Wear	weather, sport and outdoor textiles
Shirts/Business	non-iron shirts
Easy-Care Dark	dark textiles

## Preparation



Correct installation according to separate Installation instructions.



### Checking the machine

- Never switch on a damaged machine!
- Inform your customer service!



### Insert mains plug

- With dry hands only!  
Take hold of the plug only!



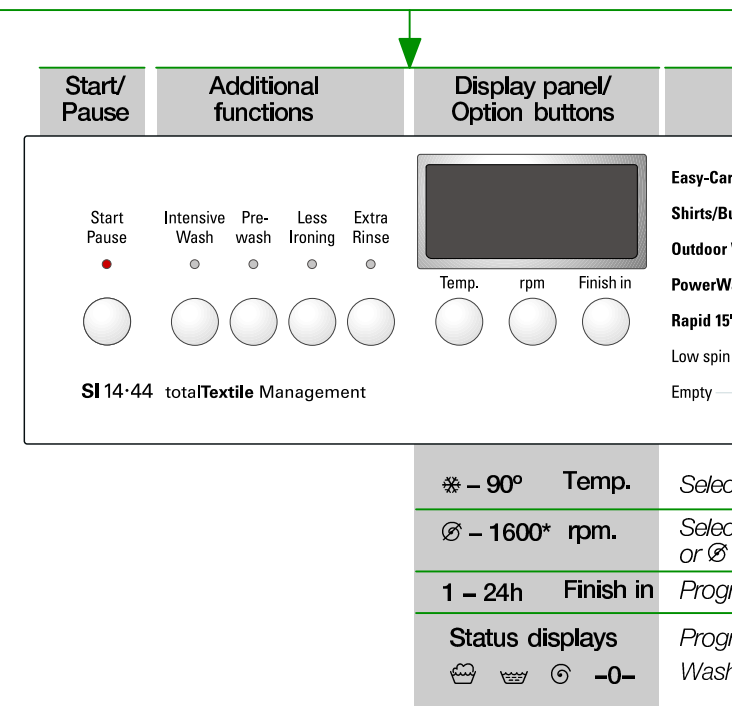
### Turn on the tap

Insert for liquid detergent (depending on model), Page 8.

II Main wash: Detergent, water softener, bleach, stain remover

☼ Care products: Fabric softener

I Prewash: Detergent, starch



*Before washing for the first time,  
wash once without any washing -> Page 6.*

## Sorting and inserting the washing

Follow manufacturer's care information!  
According to the information on the care labels.  
According to type; colour; soiling and temperature.  
Do not exceed maximum load -> Page 7.

*Follow Important instructions -> Page 6!*

Insert large and small items of washing! Close the washing machine door. Take care not to trap any items of clothing between the loading door and rubber seal.

## Add detergent and care product

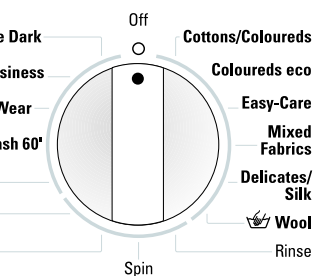
Meter accordingly:  
Washing amount, soiling, water hardness (ask your water supply company) and manufacturer's instructions.  
Models without insert for liquid detergent: Pour liquid detergent into the appropriate dispenser and place in the drum.  
During operation: Caution when opening the detergent drawer!

**i** Dilute viscous fabric softener and fabric conditioner with water. Prevents blockage of the overflow.

## Set and adjust programme

*For additional functions and option buttons  
see individual settings -> Page 5.*

### Programme selector



**i** If the option buttons are touched for longer, the setting options run automatically!

## Select Start/Pause

**i** Programme selector for switching the machine on and off and for selecting the programme. Can be rotated in either direction.

*t the temperature (\* = cold)*

*t the spin speed (\* depending on model)  
(Rinse hold = without final spin)*

*amme ends in ...*

*amme progress displays:*

*ing, Rinse, Spin, End*

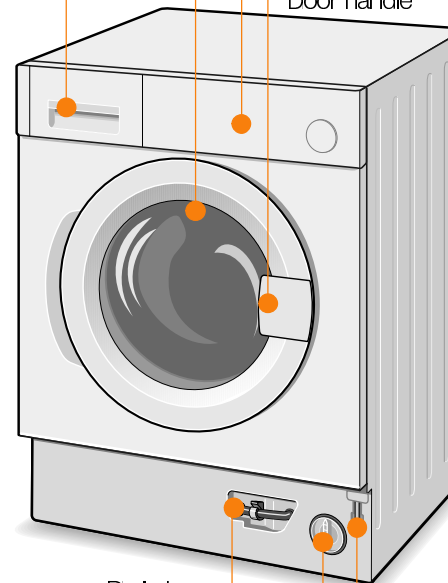
# Washing

Detergent drawer with compartments I, II, ♂

The washing machine door

Fascia

Door handle



Drain hose

Detergent solution pump

Emergency release

# Washing

## Removing washing

Open washing machine door and remove washing.  
If ♂ (Rinse stop = without final spin) is active: Select the spin speed or set programme selector to **Empty** or **Spin**. Select **Start/Pause**.  
Remove any foreign objects – risk of rusting.

## Turn off tap

Information on Aqua Stop  
-> Installation instructions -> Page 7.

## Switch off

Set programme selector to **Off**.

## End of programme when ...

...- 0 - is indicated on the display panel..

## Change programme ...

If you have mistakenly selected a wrong programme:  
- Reselect programme.  
- Select **Start/Pause**.

## Cancel programme ...

- Select **Start/Pause**.  
- If required, top up the washing (do not leave the door open for too long as water from the washing could run out of the open door)  
- Select **Start/Pause**.

## ... or terminate

Programmes with high temperature:  
- Cool washing: Select **Rinse**.  
- Select **Start/Pause**.  
Programmes at lower temperature:  
- Select **Spin** or **Empty**.  
- Select **Start/Pause**.

# Individual settings

## Option buttons

You can change the spin speed and temperature beforehand and while the selected programme is running. Effects dependent on the programme progress.

### Temp.

You can change the indicated washing temperature. The maximum washing temperature which can be selected depends on the set programme.

### rpm

You can change the indicated spin speed. The maximum spin speed which can be selected depends on the set programme.

### Finish in

The respective programme duration is displayed by selecting the programme. The programme start can be delayed before the programme begins. The **Finish in**-time can be set in hour-steps up to maximum 24h. Keep pressing the **Finish in** button until the required number of hours is indicated (h=hour). Select **Start/Pause**.

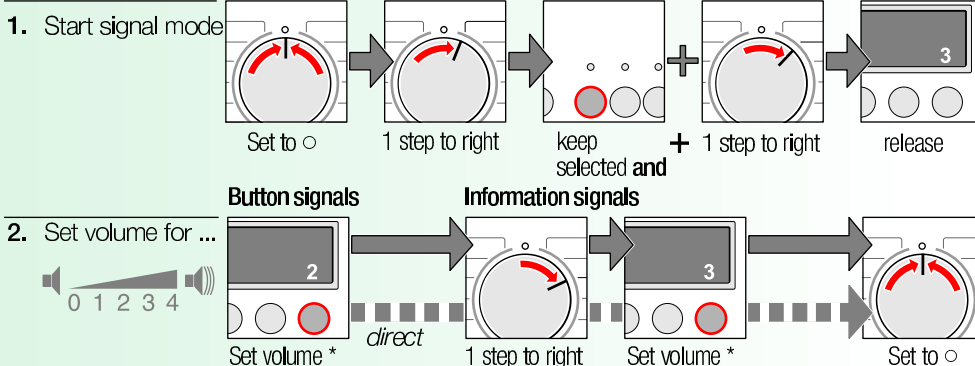
## Additional functions *see also programme overview*

Intensive Wash	Extend the washing time for a more intensive washing of heavily soiled items.
Prewash	For heavily soiled washing. Prewash at max. 30 °C.
Less Ironing	Special spin sequence with subsequent fluffing. Gentle final spin – residual moisture in the washing increased slightly.
Extra Rinse	Additional rinse cycle, extended washing time. For areas with very soft water or for further improvement of the rinsing result.

## Start/Pause

For starting or interrupting the programme.

## Signal



\* If required, select repeatedly



# Important information



## Protecting the washing and the machine

- Empty pockets.
- Remove metal parts (paper clips, etc.).
- Wash delicates in the net/bag (tights, curtains, underwired bras).
- Close zips, button up covers.
- Brush sand out of pockets and collars.
- Remove curtain fittings or include in the net/bag.



## Before washing for the first time,

Do not put any washing in the washing machine! Turn on the tap, fill approx. 1 litre of water and then pour ½ measuring cup of detergent into dispenser II.

Set the **Easy-Care 60 °C** programme and select **Start/Pause**. At the end of the programme set the programme selector to **Off**.



## Washing with different degrees of soiling

	Wash new items separately.
Light	Do not prewash.
	If required, pretreat stains. Select <b>Intensive Wash</b> additional function.
heavy	Load less washing. Prewash.
	If required, pretreat stains. Select <b>Intensive Wash</b> additional function.



## Soaking

*Load washing of the same colour*

Pour soaking agent/detergent into dispenser II according to the manufacturer's instructions. Set **Cottons/Coloureds 30 °C** programme and select **Start/Pause**. After approx. 10 minutes select **Start/Pause**. After the required soaking time reselect **Start/Pause**, if the programme is to be continued or change the programme.



## Starching

*Laundry must not be treated with fabric softener*

Starching is possible in all wash programmes if liquid starch is used. Add starch to the fabric softener compartment ☼ in accordance with the manufacturer's instructions.



## Dyeing/bleaching

Dye in small quantities only. Salt can corrode stainless steel. Observe the dye manufacturer's specifications. Do **not** bleach laundry in the washing machine.



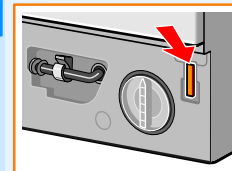
## Outdoor Wear

*Washing must not be treated with fabric softener.*

Special detergents suitable for a machine-wash available in particular from specialist sports shops. Dose detergent according to manufacturers' specifications. Fill dispenser II with special detergent for outdoor textiles. Turn the programme selector to **Outdoor Wear**. Select temperature. Select **Start/Pause**.



## Emergency release, e.g. in the event of a power failure



Programme continues running when the power has been restored. However, if the washing is to be removed, the door can be opened by actuating the emergency release.



*Risk of scalding!*

*The detergent solution and washing may be hot.*

*If required, leave it to cool down.*

*Keep hands clear of the drum if it is still rotating.*

*Do not open the door if water can be seen through the glass.*

- Turn the programme selector to **Off** and disconnect it from the power supply.
- Drain the water → page 9.
- Pull the emergency release with a tool, the door can then be opened.

Cottons/Coloureds	✱ - 90 °C	7,0 kg*	Hard-wearing textiles, heat-resistant textiles made of cotton or linen	Intensive Wash, Prewash, Less Ironing, Extra Rinse
Coloureds eco	✱ - 60 °C			
Power Wash 60'	✱ - 60 °C	5,0 kg	Hard-wearing textiles made of cotton or blended fabric	Time-controlled programme short programme for normally soiled laundry
Easy-Care	✱ - 60 °C		Easy-care textiles made of cotton, linen, synthetic fibres or blended fabrics	Intensive Wash, Prewash, Less Ironing, Extra Rinse
Mixed Fabrics		3,5 kg	Textiles made of cotton and easy-care textiles	Intensive Wash, Prewash, Less Ironing, Extra Rinse; different types of washing can be washed together
Easy-Care Dark	✱ - 40 °C		Dark textiles made of cotton and dark easy-care textiles	Intensive Wash, Prewash, Less Ironing, Extra Rinse; reduced rinse and final spin cycle
Shirts/Business	✱ - 60 °C		Non-iron shirts made of cotton, linen, synthetics fibres or blended fabrics	Intensive Wash, Prewash, Extra Rinse; only short spin, peg out dripping wet
Delicates/Silk			For delicate, washable textiles, eg. made of silk, satin, synthetic fibres or blended fabrics	Intensive Wash, Prewash, Less Ironing, Extra Rinse; only short spin between the rinse cycles
Wool		2,0 kg	Hand or machine washable wool or rich-wool textiles	Particularly gentle wash programme to avoid shrinkage, longer programme breaks (fabrics rest in the detergent solution)
Rapid 15'	✱ - 40 °C		Easy-care textiles made of cotton, linen, synthetic fibres or blended fabrics	Short programme approx. 15 minutes, suitable for lightly soiled laundry
Outdoor Wear			Weather, sport and outdoor textiles also with climate protection membrane	Intensive Wash, Less Ironing, Extra Rinse; reduced final spin at intervals
Additional programmes				
Rinse, Spin, Empty, Low spin				

**i** The programmes are time-controlled for lightly soiled textiles. If textiles are heavily soiled, reduce the load or select additional functions, e.g. **Intensive Wash**. Programmes without prewash – pour detergent into dispenser **II**, programmes with prewash – divide detergent between dispensers **I** and **II**.

\* Select the **Intensive Wash** additional function if washing 7,0 kg of cottons and coloureds.

For further information and a selection of our products go to our web site: <http://www.siemensappliances.co.uk> or contact our customer service centres

Siemens-Elektrogeräte GmbH  
Carl-Wey-Str. 34  
81739 München/Germany

9000 224 627  
0807  
WI14S440GB

## Care



- Risk of electric shock! Pull out the mains plug!
- Risk of explosion! No solvents!



### Machine housing, control panel

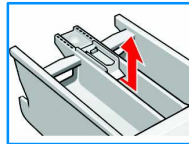
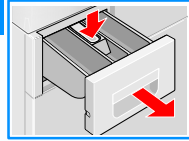
- Wipe with a soft, damp cloth.
- Do not use abrasive detergents.
- Immediately remove washing and cleaning agent residue.
- Do not clean the appliance with a water jet.



### Clean the detergent drawer ...

... if it contains detergent or fabric softener residue.

1. Pull out, depress insert, completely remove. Remove insert: Press insert upwards with finger.
2. Clean detergent dispenser and insert with water and a brush and dry.
3. Attach insert and engage (connect cylinder to guide pin).
4. Insert detergent drawer.



Leave detergent drawer open so that residual water can evaporate.



### Drum

Leave washing machine door open so that the drum can dry out.  
Rust stains – use chlorine-free cleaning agent, not steel wool.



### Descaling

*No washing in the machine!*  
Not necessary if detergent dispensed correctly. However, follow the instructions of the descaler manufacturer.

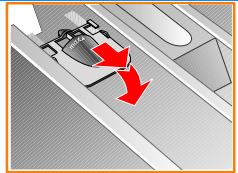


### Insert for liquid detergent

depending on model

Position insert for dispensing liquid detergent:

- Completely remove the detergent drawer -> Page 8.
- Push insert forwards.
- Do not use insert (push up):
- for gelatinous detergents and washing powders;
- for programmes with **Prewash** and **Finish in** option.



## Information on the display panel

depending on model

F: 16	Close the washing machine door properly; washing may be caught.
F: 17, 29	Turn on the tap fully, supply hose kinked/jammed; Clean filter -> Page 9; water pressure too low.
F: 18	Clean detergent solution pump -> Page 9; outlet pipe/drainage hose blocked.
F: 23	Water in the base pan, appliance leaking. Call customer service!
F: 42, 43, 44	Motor fault. Call customer service!
Other displays	Switch off the appliance, wait for 5 seconds and switch it back on. If the display appears again, call customer services -> Installation instructions, Page 7.

# Maintenance

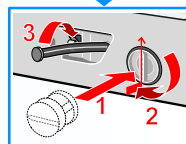
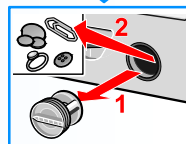


- Risk of scalding!  
Allow detergent solution to cool down!
- Turn off the tap!

## Detergent solution pump

Set programme selector to **Off**, pull out the mains plug.

1. Take the drainage hose out of the holder. Remove sealing cap, allow detergent solution to flow out. Put the closing cap back on the hose.
2. Carefully unscrew the pump cover (residual water).
3. Clean the interior, pump cover thread and pump housing (fan impeller in the detergent solution pump must rotate).
4. Re-insert pump cover and screw on tight, handle is upright. Insert the drain hose into the holder.



To prevent unused detergent from flowing into the outlet during the next wash: Pour 1 litre of water into dispenser II and start the **Empty** programme.

## Filter in the water inlet hose



**Risk of electric shock!** Do not immerse Aqua-Stop safety device in water (contains electric valve).

Release water pressure in the supply hose:

1. Turn off the tap!
2. Select any programme (**except** Spin/Empty).
3. Select **Start/Pause**. Leave programme for approx. 40 seconds.
4. Set programme selector to **Off**. Pull out the mains plug.

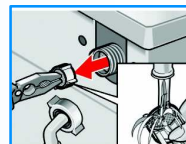
Clean filter:

1. Depending on model:
  - Remove hose from tap.
  - Clean filter with small brush.

or

- Remove hose from the rear.
- Remove filter with pliers and clean.

2. Connect the hose and check for leaks.



# What to do if ...

- Water is running out.
  - Correctly attach/replace drainage hose.
  - Tighten screw-fitting on the supply hose.
- Water not flowing in. Detergent not washed in.
  - **Start/Pause** not selected?
  - Tap not open?
  - Filter blocked? Clean filter -> Page 9.
  - Supply hose kinked or jammed?
- Washing machine door cannot be opened.
  - Safety function active. Wait approx. 2 minutes.
  - Ø (Rinse stop = without final spin) selected? -> Page 4.
  - Can be opened via emergency release only -> Page 6.
- Programme does not start.
  - **Start/Pause** or **Finish in** selected?
  - Washing machine door closed?
- Detergent solution is not drained.
  - Clean detergent solution pump -> Page 9.
  - Clean outlet pipe and/or drainage hose.
- Water not visible in the drum.
  - Not a fault – water below the visible area.
- Spin result not satisfactory.
  - Wash small and large items of washing together.
  - **Less Ironing** selected? -> Page 5.
  - Too low speed selected? -> Page 3.
- Spin cycle actuated several times.
  - Not a fault – unbalanced load detection system adjusts imbalance.
- Dispenser ⌘ not completely rinsed out.
  - Remove the insert. Clean detergent drawer and insert -> Page 8.
- Odour formation in the washing machine.
  - Run **Cottons/Coloureds 90 °C** programme without washing. Use standard detergent.
- Foam is coming out of the detergent drawer.
  - Too much detergent used?
  - Mix 1 tablespoon of fabric conditioner with ½ litre of water and pour into dispenser II in the detergent drawer.
  - Reduce detergent dosage for the next wash cycle.
- Intense noise formation, vibrations and "wandering" during spin cycle.
  - Appliance feet fixed?
  - Secure appliance feet -> Installation instructions, Page 5.
  - Transportation safety devices removed?
  - Remove transportation protection devices -> Installation instructions, Page 4.
- Display panel/indicator lights do not function while the appliance is running.
  - Power failure?
  - Fuse tripped? Switch on/replace fuse.
  - If the fault occurs repeatedly, call customer service.
- Programme progress longer than usual.
  - Not a fault – unbalanced load detection system adjusts imbalance by repeatedly distributing the washing.
  - Not a fault – foam detection system active, a rinse cycle is started.
- Detergent residue on the washing.
  - Occasionally phosphate-free detergents contain water-insoluble residue.
  - Select **Rinse** or brush the laundry after washing.
- In the pause state **Start/Pause** flashes very quickly and a signal sounds.
  - Water level too high. Top up washing is not possible. If required, close door immediately.
  - Select "Start/Pause" to continue the programme.
- If a fault cannot be rectified or a repair is required:
  - Set programme selector to **Off** and pull out the mains plug.
  - Turn off tap and call customer service -> Installation instructions, Page 7.



## Safety instructions

- Read and follow the operating and installation instructions and all other information enclosed with the washing machine.
- Retain documents for subsequent use.

### Risk of electric shock

- Never pull out the mains plug by tugging the power cord!
- Never insert/pull out the mains plug with damp hands.

### Danger to life

Redundant appliances:

- Pull out the mains plug.
- Sever the power cord and discard together with the plug.
- Destroy the lock on the washing machine door.  
This will prevent children from locking themselves in and suffocating.

### Risk of suffocation

- Keep packaging, plastic film and packaging parts out of the reach of children.

### Risk of poisoning

### Risk of explosion

- Keep detergents and care products out of the reach of children.
- Caused by detergents containing solvents, e.g. stain remover/items of washing pretreated with solvent naphtha may result in an explosion after being loaded into the washing machine.  
Before hand thoroughly rinse items of washing by hand.

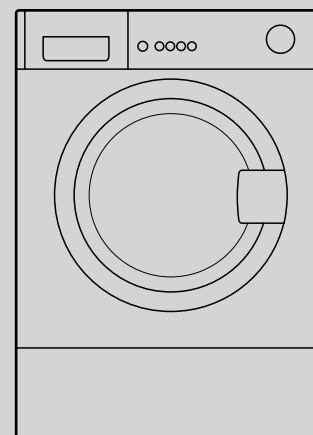
### Risk of injury

- Washing machine door may become very hot.
- Caution when draining hot detergent solution.
- Do not climb on the washing machine.
- Do not lean on the open washing machine door.
- Do not touch the drum in case it is still spinning.

# SIEMENS

## Operating instructions

en



Washing machine

## Consumption values

Programme	Additional function	Load	Current**	Water**	Programme duration**
<b>Cottons/Coloureds 30 °C*</b>	Intensive Wash	7.0 kg	0.55 kWh	75 l	2:12 h
<b>Cottons/Coloureds 40 °C*</b>	Intensive Wash	7.0 kg	0.85 kWh	75 l	2:12 h
<b>Cottons/Coloureds 60 °C</b>	Intensive Wash	7.0 kg	1.50 kWh	75 l	2:12 h
<b>Coloureds eco 60 °C*</b>	Intensive Wash	7.0 kg	1.19 kWh	49 l	2:25 h
<b>Cottons/Coloureds 90 °C</b>	Intensive Wash	7.0 kg	2.51 kWh	90 l	2:12 h
<b>Easy-Care 40 °C*</b>	Intensive Wash	3.5 kg	0.55 kWh	55 l	1:12 h
<b>Easy-Care 40 °C</b> (also suitable as <b>Short programme</b> )	–	3.5 kg	0.54 kWh	55 l	0:45 h
<b>Delicates/Silk *</b> (cold)	–	2.0 kg	0.03 kWh	39 l	0:40 h
<b>Delicates/Silk 30 °C</b>	–	2.0 kg	0.20 kWh	39 l	0:40 h
<b>Wool *</b> (cold)	–	2.0 kg	0.08 kWh	47 l	0:36 h
<b>Wool 30 °C</b>	–	2.0 kg	0.20 kWh	47 l	0:36 h

\* Programme setting with maximum spin speed for conducting test according to currently valid European Standard 60456.

\*\* The values deviate from the indicated values depending on water pressure, water hardness, water inlet temperature, room temperature, type and amount of washing and degree of soiling, utilised detergent, fluctuations in the mains voltage and selected additional functions.



Read these instructions before switching on the washing machine! Also follow the separate Installation instructions. Follow the safety instructions on page 11!