

## The woollens basket

The woollens basket allows you to dry **individual**, machine or hand-washable woollen textiles & plastic / leather sports shoes. As the woollens basket does not rotate in the drum, woollen items or sports shoes can be dried. Damp wool should be kept as motionless as possible, otherwise it has a tendency to felt. The weight of sports shoes may damage the drum.



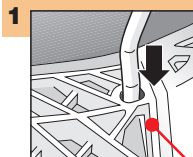
### Check the woollens basket



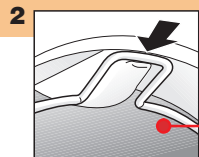
Never use a damaged woollens basket!  
Inform your customer service!

### Insert the basket

The drum must be empty!



Insert both feet



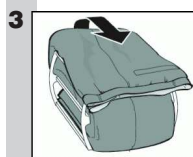
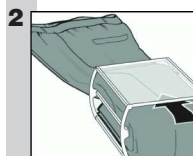
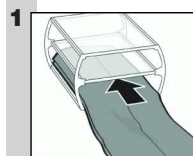
Position the basket

### Application examples

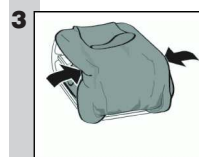
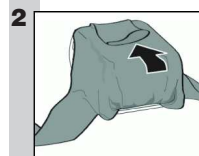
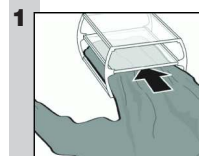


Washing must have been spun!  
Insert items of washing loosely, do not crush!

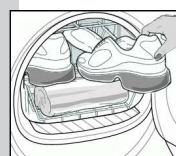
#### Trousers, skirt



#### Pullover



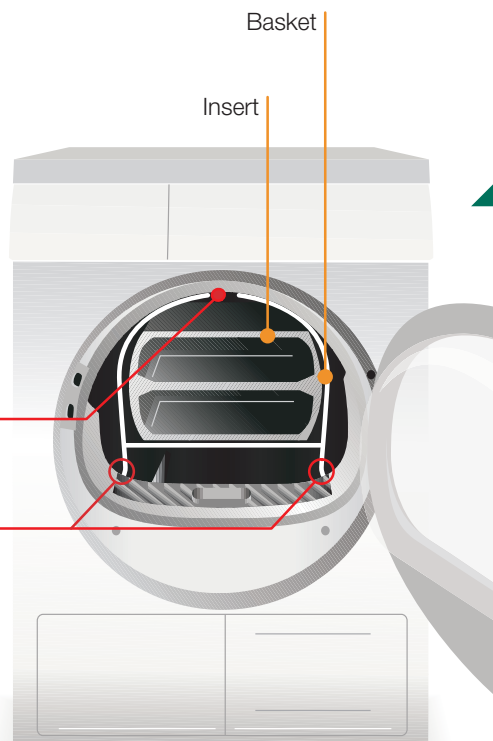
#### Sports shoes



1 The insert is not used for sports shoes.  
2 Fold out the tongue on sports shoes. Remove shoe laces, insoles and/or heel pads.

3 Place a rolled up towel in the basket to produce an inclined support. Put the heels of the sports shoes on the towel.

## Drying with the woollens basket



### Switch off the dryer

Set programme selector to the **Off** position.

### Remove the washing

After drying, take the basket and insert out of the dryer. Spread out the washing and leave it to air for approx. 15 minutes.

## When the programme ends ...

### Start the programme

Press the Start button.

### Set the drying time

Adjustable in 10 min. steps up to 2:30 h by pressing the **Change** button or the button for programme duration (*depending on model*). The times have been selected to ensure that the washing is dried cupboard-dry. There may be residual moisture in the case of a thick or multi-ply item of washing. Times are approximate values. If required, dry again briefly.

Thin woollen pullover	1:20 h
Thick woollen pullover	1:30 – 2:00 h
Skirt	1:00 – 1:30 h
Trousers	1:00 – 1:30 h
Small item, e.g. gloves	30 min.
Sports shoes (max. 1.5 kg)	1:30 h. + airing or max. 2:00 h

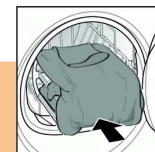
### Select programme for woollens basket

Use only the woollens basket programme!  
See programme overview in the dryer instructions!

### Put in the insert



Washing must not touch the drum!  
Otherwise, items of washing could become caught and be damaged!



Drying

# Woollens basket



WOOLMARK  
APPROVED



en



Before using the woollens basket, read these instructions and the dryer operating instructions!