



Quick and easy: everything you need to know about your dishwasher... You should, however, still read the installation and operating instructions before you use the dishwasher for the first time.

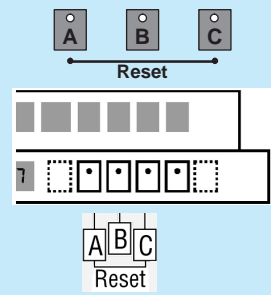
### Set the water softening system \*

Find out the **water hardness** at your water utility company and enter

Read off the setting ...

°dH	°fH	°Clarke	mmol/l	Setting
0 - 6	0 - 11	0 - 8	0 - 1,1	H0
7 - 8	12 - 15	9 - 10	1,2 - 1,4	H1
9 - 10	16 - 17	11 - 12	1,5 - 1,8	H2
11 - 12	18 - 21	13 - 15	1,9 - 2,1	H3
13 - 16	22 - 29	16 - 20	2,2 - 2,9	H4
17 - 21	30 - 37	21 - 26	3,0 - 3,7	H5
22 - 30	38 - 54	27 - 38	3,8 - 5,4	H6
31 - 50	55 - 89	39 - 62	5,5 - 8,9	H7

\* only **before using** the dishwasher for the first time or if the **water hardness changes**

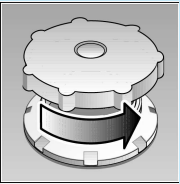


Quickly sorted ... and then set

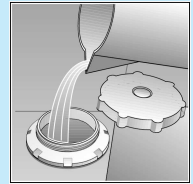
- Hold down programme button **B** and switch on the main switch, then release the buttons. The display of button **B** and the number **H4** set by the factory flash.
- Each time button **B** is depressed, the setting increases by one; if **H7** has been reached, the display jumps back to **H0**.
- Switch off the main switch. The selected setting has been stored in the appliance.

**1** Pour in the water/special salt

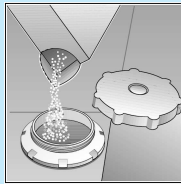
Dissolves limescale (not required for set value 0!)



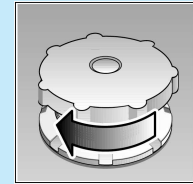
Unscrew the lid.



Only before using the dishwasher for the first time pour approx. 1 l / 2 pt water into the salt opening.



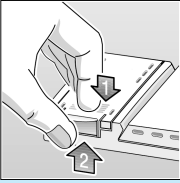
Pour in max. 1.5 kg / 3 lb 5 oz salt (never detergent!)



Screw on the lid. Switch on dishwasher immediately.

**2** Pour in the rinsing agent

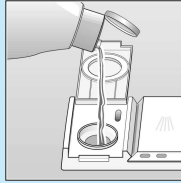
Everything is sparkling clean ...



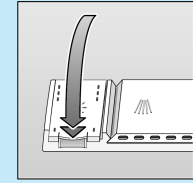
Press mark 1, lift up lid 2.



Refill whenever level indicator is light!



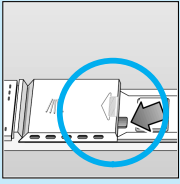
Pour in rinse aid.



Close the lid. CLICK!

**3** Pour in the cleaning agent

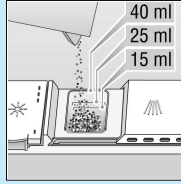
Very dirty dishes, a lot of detergent ...



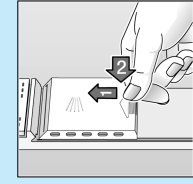
If required, open the lid (press the pin).



**Warning,** combination products are not suitable for all programmes, follow manufacturer's instructions.



Pour in detergent.



Push the lid shut, press. PLOP!

**5** Select the programme

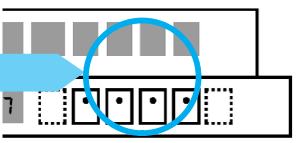
Quick, economical or intensive ...

#### Programme overview

This overview lists the max. possible number of programmes. The programmes supplied with your appliance are indicated on the fascia.

The programme data are values measured in the laboratory in compliance with Standard EN 50242. Deviations in practice are possible.

	Intensive 70°	Auto 55° /65°	Eco 50°	Gentle 40°	Quick 45°	Prerinse
Duration in minutes	135	85-140	140	80	30	19
Electricity consumption in kWh	1,75	1,00-1,60	1,05	0,75	0,70	0,05
Water consumption in litres	20	-	12	18	10	4
with Aquasensor	12	9-19	-	13	-	-



Switch on the appliance the dishwasher starts...

Press the on/off switch, the cycle time for the programme selected appears

Switch off the appliance that's it...

Press the on/off switch when the indicator shows 0 (programme end)

### Additional programmes \*\*

**Soak** ...crockery in the lower basket, programme starts automatically, remember to add an extra 5g of cleaning agent when the door unlocks.

**Saving time (VarioSpeed)** ... is obtained by increased energy consumption at a constant cleaning and drying performance.

**1/2 Half load** ... for a few items, saves water, energy and time

**Lower basket cleaning** ...Only the crockery in the lower basket is cleaned

**Time selection** ...switches on as soon as you press the time selection button: Alters the programme start in hourly steps

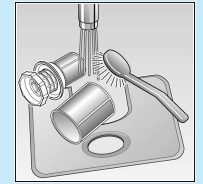
\*\* on some models

# Maintenance and care

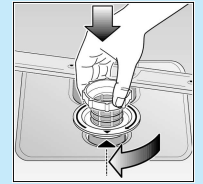
**Strainers ...**  
Check, if required, clean



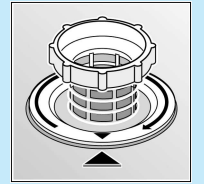
Rotate filter cylinder, remove filter system ...



For perfect rinsing results ...  
rinse under flowing water ...



Insert ...

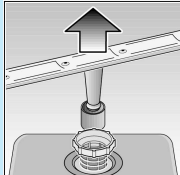


Screw in filter system **NOTE MARK!**

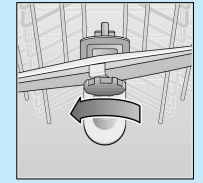
# Cleaning the waste-water pump \*

- \* With some models
- Ladle out water and remove filters
  - Unscrew cover (Torx T20)
  - Check area of fan impeller for foreign objects
  - Screw in cover and insert filters

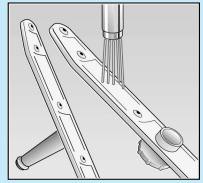
**Spray arms ...**  
Remove blockages/deposits



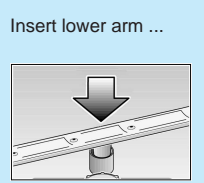
Pull lower arm upwards ...



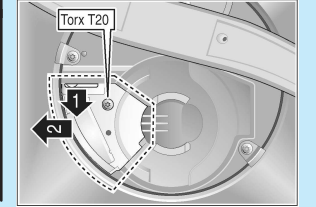
Unscrew upper arm ...



Clean spray nozzles under flowing water (perhaps with toothpick) ...



Insert lower arm ...  
Screw in upper arm



# Eliminating minor faults yourself ...

... Self-help pays!

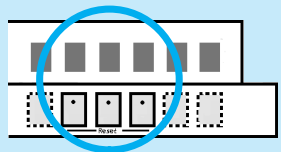
Fault	Possible Cause	Remedy
Residual water in the device	Waste-water pump blocked Programme not yet ended	▶ Clean waste-water pump (see above). ▶ Switch on appliance and close or terminate programme (see Terminating the programme).
Device does not work/stops Check water supply Display lights up	Supply fitting not open Supply hose kinked Supply fitting jammed or calcified	▶ Open supply fitting. ▶ Lay supply hose without kinks. ▶ 1. Unscrew water connection. 2. Clean filter in the water connection. 3. Flow rate must be min. 9 l/min when the water inlet is open. If the flow rate is less, replace the supply fitting.
Plastic parts / parts of dishes discoloured	Too little cleaning product Discoloration caused by food colourings (tomato sauce)	▶ Follow manufacturer's specifications (detergent). ▶ Discoloration is quite safe; fades after subsequent rinse cycles.
Cutlery rusty	Cutlery not rust-proof Hard knife blades are more susceptible Extraneous rust	▶ Use dishwasher-proof cutlery. ▶ Never wash rusting parts in the appliance.

Fault	Possible Cause	Remedy
Dishes not clean Sand or grainy residues on dishes	Utensils are situated too close to each other or on top of each other Too little cleaning product Unsuitable programme selected Spray nozzles blocked Filters dirty, not installed securely Spray arms blocked	▶ Spread out the utensils, avoid contact between the utensils. ▶ Follow manufacturer's specifications (detergent). ▶ Select more intensive programme. ▶ Clean spray arms (see above). ▶ Clean the strainers (see above). ▶ Arrange the utensils so that the spray arms can rotate freely.
Stains and streaks	Rinse aid dosage too high / too low	▶ Streaks: Reduce dosage. ▶ Water or limescale stains: Increase dosage.
Milky residues on dishes (can be removed)	Water softening system incorrectly set; no special salt	▶ Set water softening system correctly. ▶ Refill with special salt.
Milky film, glasses cloudy / dull (cannot be removed)	Glasses not dishwasher-proof.	▶ Use dishwasher-proof glasses. ▶ Use glass-friendly cleaning products.

Further advice can be found in the instruction manual

# Stopping the programme ...

Press and hold the two reset buttons simultaneously for approximately 3 seconds while the programme is running (RESET)



▶ "0" appears  
▶ The programme will stop after 1 minute

▶ Switch off the appliance.

# Loading the dishwasher correctly ...

Arrange dishwasher-proof utensils (having removed any ash, wax, grease, ink, sticky labels; remove, large remnants of jam, dairy products and food) according to the operating instructions and check that the spray arms can rotate freely.