

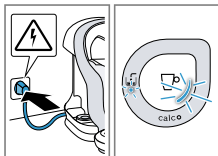
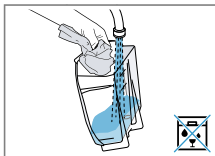
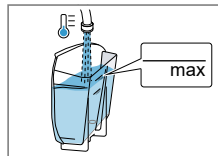
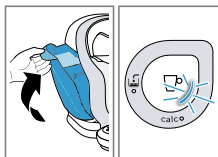
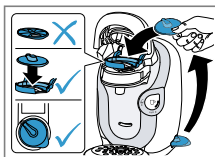
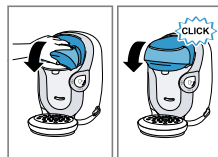
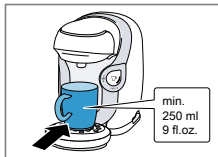
1



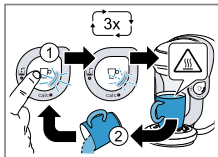
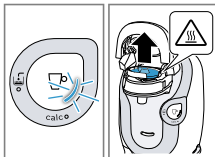
de Inbetriebnahme
 en Commissioning
 fr Mise en service
 it Messa in funzione
 es Puesta en marcha

sv Idrifttagning
 da Ibrugtagning
 no Oppstart
 el Θέση σε λειτουργία
 pl Pierwsze uruchomienie

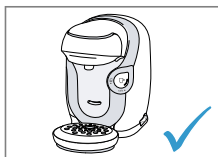
cs Uvedení do provozu
 sk Uvedenie do prevádzky
 ro Punerea în funcțiune
 ru Ввод в эксплуатацию

**1****2****3****4****5****6****7****8****9**

min.
250 ml
9 fl.oz.

**10****11****12**

www.bosch-home.com

**13**

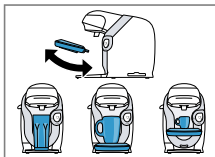
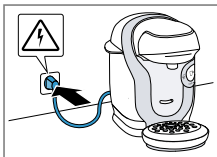
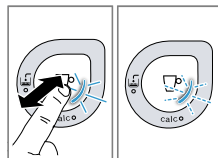
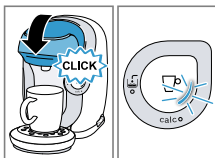
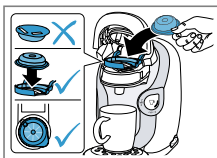
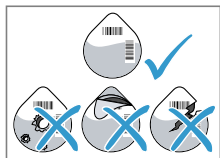
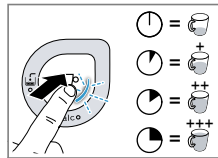
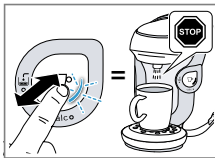
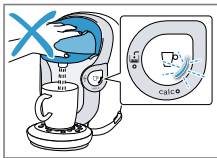
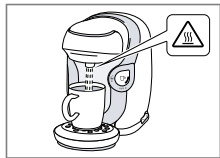
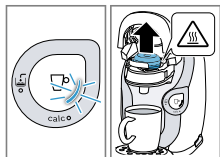
2



de Getränkzubereitung
 en Preparing drinks
 fr Préparation des boissons
 it Preparazione delle bevande
 es Preparación de las bebidas

sv Drycktillagning
 da Tilberedning af drikke
 no Tilberedning av drikke
 el Παρασκευή ροφήματος
 pl Przygotowywanie napojów

cs Pořprava nápoje
 sk Príprava nápoja
 ro Pregătirea băuturii
 ru Приготовление напитков

**1****2****3****4a****4b****5****6****7****8a****8b****8c****8d****9****10**