



Connect your cooling appliance – with the future.



## Home Connect. One app for everything.

Home Connect is the first app that does your laundry, washes your clothes, bakes, prepares coffee and looks inside your refrigerator for you. Various home appliances, different brands – Home Connect connects them together and makes them mobile.

For you, this represents many more opportunities to make your life easier. Make the most of our convenient services, discover clever tips and information, and take care of your household using your smartphone or tablet. In short, welcome to a new way of living!



# A new way of living.

## More convenient.

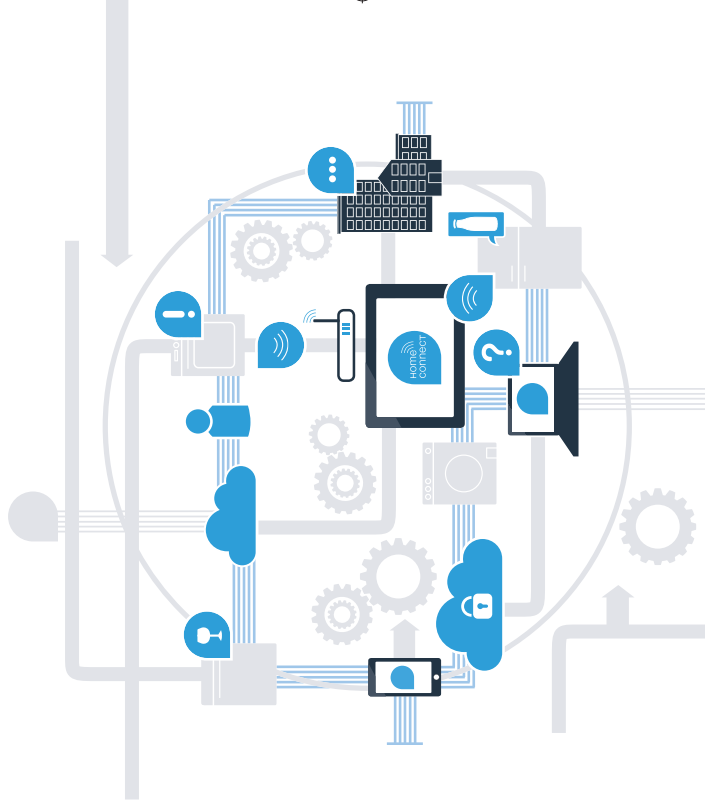
With Home Connect, you can control your home appliances whenever you want, wherever you want. Simply and intuitively, using your smartphone or tablet. This saves you effort and waiting time and ensures you have more time for the things that really matter to you.

## More straightforward.

Configure operating settings such as signal tones or individual programs directly in the app on the intuitive touch screen. This is even easier and more precise than on the appliance itself, and you have all the data, instructions and a range of tutorial videos at the touch of a finger.

## More connected.

Prepare to be inspired and discover a multitude of extras tailored to your appliances. Recipe collections, tips on how to use your appliances and much more. You can order suitable accessories in just a few clicks at any time.



## Get the best out of your cooling appliance with Home Connect.

Home Connect allows you to look inside your cooling appliance using your smartphone – wherever you are. On the following pages, find out how you can combine your cooling appliance with the pioneering Home Connect app and benefit from a range of further benefits. For all the important information about Home Connect, see [www.home-connect.com](http://www.home-connect.com)



### What do you need in order to connect your cooling appliance with Home Connect?

- Your smartphone or tablet has the latest operating system version.
  - You have a home Wi-Fi network at the site of your home appliance
- Name and password of your home network (Wi-Fi):**
- Network name (SSID): \_\_\_\_\_
- Password (key): \_\_\_\_\_
- The home network is connected to the Internet and Wi-Fi functionality is enabled.
  - Your home appliance is unpacked and connected.

## Step 1: Set up the Home Connect app

**A** Open the App Store (Apple devices) or Google Play Store (Android devices) on your smartphone or tablet.

**B** Search for “Home Connect” in the Store.

**C** Select the Home Connect app and install it on your smartphone or tablet.

**D** Launch the app and set up your Home Connect access. The app guides you through the login process. Then note down your email address and password.

### Home Connect login details:

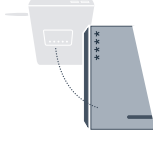
Email: \_\_\_\_\_

Password: \_\_\_\_\_



Please check availability at [www.home-connect.com](http://www.home-connect.com)

## Step 2 (initial start-up): Connect your cooling appliance to your home Wi-Fi network



**A** Connect the plug of the cooling appliance as per the accompanying instructions.



**B** Check whether your home network router has WPS functionality (automatic connection). See your router's handbook for more information.

**C** Does your router have WPS functionality (automatic connection)?



Your router has WPS functionality?  
**Then proceed to Step 2.1 – Automatic connection (WPS).**



Your router does not have WPS functionality or you are not sure?  
**Then proceed to Step 2.2 – Manual connection (pro mode).**



## Step 2.1: Automatically connect your cooling appliance to your home Wi-Fi network

- A** Press down the keys “**super**” and “**lock/alarm off**” in the centre at the same time for 5 seconds. “**Cn**” (Connectivity = Home Connect menu) will appear in the indicator panel.

Long-press the “**lock/alarm off**” key in the centre to lock the keys. To re-enable the keys, press the “**lock/alarm off**” key again in the centre and keep it pressed.

- B** Press the “**C**” key, “**AC**” (automatic connection) and “**OF**” will appear in the indicator panel.

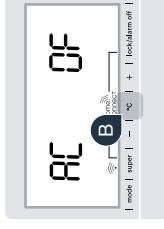
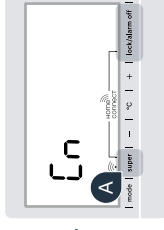
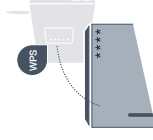
- C** Press the “**+**” key to start the automatic connection. An animation will then appear in the indicator panel for 2 minutes. During this time, perform the following steps.

- D** Enable WPS functionality on your home network router within the next 2 minutes. (Some routers may have a WPS/Wi-Fi key. See your router’s handbook for more WPS information.)

- E** When a successful connection is established, “**On**” will flash in the indicator panel. **Then proceed directly to Step 3.**

If “**OF**” flashes in the indicator panel for 3 seconds, this means that no connection could be established within the 2 minutes. Return to item A or perform a manual connection (step 2.2).

If the appliance is not used for a longer period of time, the menu will close automatically. Return to item **A**



## Step 2.2: Manually connect your cooling appliance to your home Wi-Fi network

Most Wi-Fi routers offer WPS functionality. If your Wi-Fi router does not offer this functionality, or if you are not sure about this, you can also manually connect the cooling appliance to your home network.

- A** Press down the keys **“super”** and **“lock/alarm off”** in the centre at the same time for 5 seconds. **“Cn”** (Connectivity = Home Connect menu) will appear in the indicator panel.

Long-press the **“lock/alarm off”** key in the centre to lock the keys. To re-enable the keys, press the **“lock/alarm off”** key again in the centre and keep it pressed.

- B** Press the **“C”** key twice until **“SA”** (manual connection) and **“OF”** appears in the indicator panel.

- C** Press the **“+”** key to start the manual connection. An animation will then appear in the indicator panel for a maximum of 5 minutes. During this time, perform the following steps.

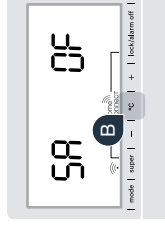
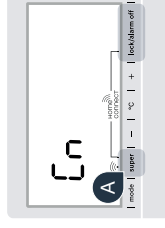
- D** To transfer data, your cooling appliance has now set up its own Wi-Fi network under the network name (SSID) **“HomeConnect”**, which you can access using your smartphone or tablet.

- E** Go into the general settings menu of your smartphone or tablet and access your Wi-Fi settings.

### Tip:

In the case of a manual connection, your cooling appliance will establish its own Wi-Fi network (soft access point [SAP]), which you can access using your smartphone or tablet.

If the appliance is not used for a longer period of time, the menu will close automatically. Return to item **A**





**F** Connect your smartphone or tablet to the Wi-Fi network (SSID) **“HomeConnect”** (the Wi-Fi password [key] is “HomeConnect”). It may take up to 60 seconds to establish a connection.



**G** Once a connection has been established, open the Home Connect app on your smartphone **G** or tablet.



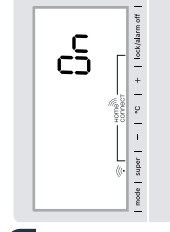
**H** The app will now search for your cooling appliance for a few seconds. If the cooling appliance was found, enter the network name (SSID) and password (key) for your home network (Wi-Fi) in the relevant fields.



**I** Then select **“Transfer to home appliances”**.



**J** When a successful connection is established, **“On”** will flash in the indicator panel.



**“OF”** will appear in the indicator panel. No connection could be established within 5 minutes.

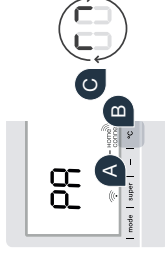
Check whether the cooling appliance is within the range of the home network (Wi-Fi), and repeat the process if necessary.



## Step 3: Connect your cooling appliance to the Home Connect app



- A** Press down the keys **“super”** and **“lock/alarm off”** in the centre at the same time for 5 seconds. **“Cn”** (Connectivity = Home Connect menu) will appear in the indicator panel.
- B** Then press the **“C”** key until **“PA”** (Pairing = connection between cooling appliance and app) appears in the indicator panel.
- C** Press the **“+”** key to connect the cooling appliance to the app. An animation will appear in the indicator panel.
- D** When a connection is established, **“On”** will appear in the indicator panel.
- E** Pick up your mobile device. Select **“+”** (add) in the Home Connect app once your cooling device is displayed there.
- F** If the cooling device is not displayed automatically, select **“Search for home appliances”** in the app and then **“Connect home appliance”**.
- G** Follow the instructions in the app to complete the process.
- H** Once a connection has been established, **“On”** will flash in the indicator panel for 3 seconds.
- I** You have now successfully connected your cooling appliance to the app! Once a connection has been established, **“PA”** and **“On”** will appear in the indicator panel.



**?**

**Connection failed:** Make sure that your smartphone or tablet is connected to your home Wi-Fi network. Repeat the procedures in step 3. If **“Er”** appears in the indicator panel, you can reset your cooling appliance. See the operating instructions for more information about resetting your appliance as well as other tips.

## The future has already begun in your home.

Your new cooling appliance with Home Connect functionality is part of the new generation for a connected household. Did you know that there are many home appliances available with Home Connect functionality? In the future, you will be able to control and operate your oven, dishwasher, coffee machine, washing machine and dryer from leading European home appliance brands remotely. Learn about the future of household and the many benefits of a connected household: [www.home-connect.com](http://www.home-connect.com)



## Your safety is of prime importance to us.

### Data security:

The transfer of data is always encrypted. Home Connect meets the highest security standards, and the app is certified according to TÜV Trust IT. For more information about data privacy, visit [www.home-connect.com](http://www.home-connect.com)

### Appliance safety:

For safe operation of your appliance with Home Connect functionality, please take note of the safety information in the appliance operating instructions.



Enjoy the freedom to shape  
your life as you wish.



Do you have questions or would you like to  
contact the Home Connect service hotline?  
Then visit us at [www.home-connect.com](http://www.home-connect.com)

8001 015 381 (9507)

**Home Connect is a service of Home Connect GmbH**

Apple App Store and iOS are trademarks of Apple Inc.

Google Play Store and Android are trademarks of Google Inc.

Wi-Fi is a trademark of the Wi-Fi Alliance

The TÜV seal of approval is based on certification provided by TÜV Trust IT GmbH

TÜV AUSTRIA Group