

Quick and easy: everything you need to know about your dishwasher...
You should, however, still read the installation and operating instructions before you use the dishwasher for the first time.



1 Pour in the water/special salt

2 Pour in the rinsing agent

3 Pour in the cleaning agent

5 Select the programme

7 Switch on the appliance the dishwasher starts...

Switch off the appliance that's it...

Press the on/off switch when the indicator shows 0 (programme end)

Inserting the water softening system *

Enter the hardness value ...

ask your water supplier

* only necessary before the first rinse or if the water hardness has changed

Read off the setpoint value ...

°dH	°fH	°Clarke	mmol/l	LED
0 - 3	0 - 6	0 - 4	0 - 0,6	00
4 - 6	7 - 11	5 - 8	0,7 - 1,1	01
7 - 9	12 - 16	9 - 11	1,2 - 1,6	02
10 - 12	17 - 21	12 - 15	1,7 - 2,1	03
13 - 16	22 - 29	16 - 20	2,2 - 2,9	04
17 - 21	30 - 37	21 - 26	3,0 - 3,7	05
22 - 30	38 - 54	27 - 38	3,8 - 5,4	06
31 - 50	55 - 89	39 - 62	5,5 - 8,9	07

Quick procedure ...

and enter it as shown below ...

Press and hold the ECO button **+** and the on/off button

The ECO indicator lamp and the setpoint value 4 flash

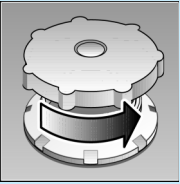
Hold the ECO button until the required value appears

The required setpoint value appears instead of "4"

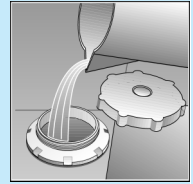
Press the on/off button

The setpoint value is stored

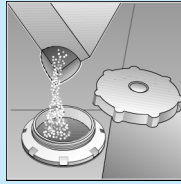
Dissolves limescale (not required for set value 0!)



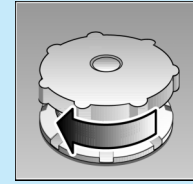
Unscrew the lid.



Only before using the dishwasher for the first time pour approx. 1 l / 1 1/4 pt water into the salt opening.

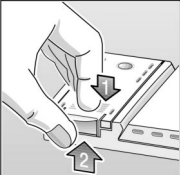


Pour in max. 1.5 kg / 3 lb 5 oz salt (never detergent!)



Screw on the lid. Switch on dishwasher immediately.

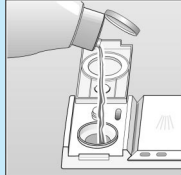
Everything is sparkling clean ...



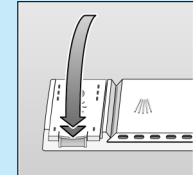
Press mark 1, lift up lid 2.



Refill whenever level indicator is light!

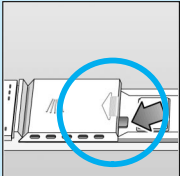


Pour in rinse aid.



Close the lid. CLICK!

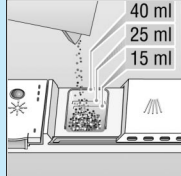
Very dirty dishes, a lot of detergent ...



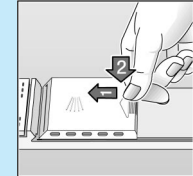
If required, open the lid (press the pin).



Warning,
 combination products are not suitable for all programmes, follow manufacturer's instructions.



Pour in detergent.



Push the lid shut, press. PLOP!

Quick, economical or intensive ...

Programme overview

This overview lists the max. possible number of programmes. The programmes supplied with your appliance are indicated on the fascia.

The programme data are values measured in the laboratory in compliance with Standard EN 50242. Deviations in practice are possible.

	Intensive 70°	Auto 55° /65°	Eco 50°	Gentle 40°	Quick 35°	Pre-rinse
Duration in minutes	112	95-145	140	72	30	19
Electricity consumption in kWh	1,60	1,15-1,50	1,05	0,80	0,60	0,10
Water consumption in litres	21	11-19	14	15	10	4
with Aquasensor	18	-	-	12	-	-

Additional programmes **

Increased flexibility ...

Soak
 ...crocery in the lower basket, programme starts automatically, remember to add an extra 5g of cleaning agent when the door unlocks.

Time reduction/ time saving
 ...shortens the cleaning time, reduces the drying.

Upper basket cleaning
 ...only the crockery in the upper basket is cleaned

Lower basket cleaning
 ...only the crockery in the lower basket is cleaned

Time selection
 ...switches on as soon as you press the time selection button: Alters the programme start in hourly steps

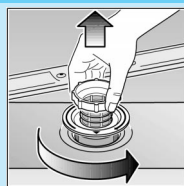
** on some models

Maintenance and care

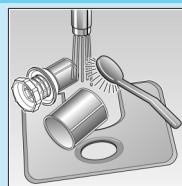
For perfect rinsing results

Filters

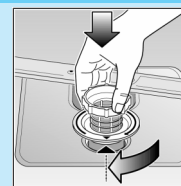
Check and, if required, clean:



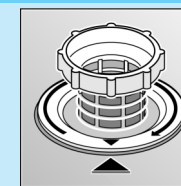
Rotate filter cylinder, remove filter system



Rinse under running water



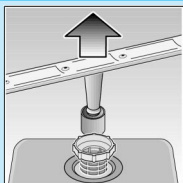
Insert



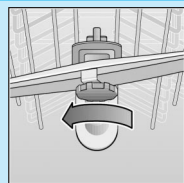
Screw on filter system. NOTE MARK!

Spray arms

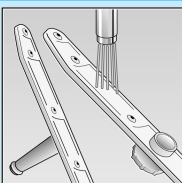
Remove blockages/deposits



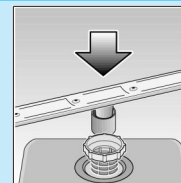
Pull up lower arm



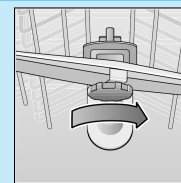
Unscrew upper arm



Clean under running water (if required, use a toothpick)



Insert lower arm



Screw on upper arm

Breakdown and assistance

The correct procedure

Problem

Possible causes

Remedy

Water left in the appliance
Appliance not working/
stopst ...

The appliance was opened during the programme ...

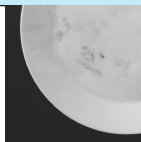
Close the appliance and switch it on, or stop the programme (see Stopping the programme).

Appliance not working/
stops ...

No / too little water
check whether ...

the water supply is turned on. the supply fittings are not obstructed or furred up. the supply hose is not bent.

The crockery is not clean ...



Crockery is stacked too closely together/on top of each other ...
Too little cleaning agent ...
Wrong programme ...
The spray arms are obstructed

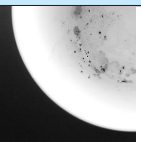
Reload according to the instructions. Refer to the manufacturer's instructions. Select the appropriate programme. Rearrange items causing a blockage (e.g. large spoons).

The crockery in the upper basket is not clean ...

Parts of the programme only work on the lower basket...

Place heavily soiled crockery in the lower basket. Select the **soak** programme as well.

There are powdery or greasy residues on the crockery ...



The filter is loose ...
The filter is dirty ...
The spray arm nozzles are blocked ...
Too little water ...

Clean the filter (see above) secure the filter correctly (MARKING).
Clean the filter (see above).
Clean the spray arms (see above).
See "Appliance is no longer working".

Problem

Possible causes

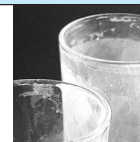
Remedy

Plastic parts/crockery discoloured ...

Use a milder cleaning agent ...
Too little cleaning agent ...

Use a cleaning agent containing chlorine bleach. Refer to the manufacturer's instructions.

Milky deposits on the crockery (removable) ...



Rinsing agent dose too high (streaks visible) ...
Rinsing agent dose too low ...

Reduce or increase the dosage according to the instructions.

Glasses cloudy/dull ...

Water too hard ...
Glasses not dishwasher-proof ...
Unsuitable cleaning agent ...

Refill the special salt/adjust water softening system. Use dishwasher-proof glasses. Use a glass-enhancing cleaning agent.

Rust on the cutlery ...



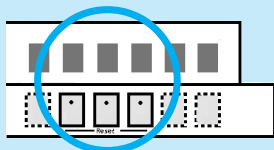
Cutlery not rustproof ...

Use dishwasher-proof cutlery.

You will find further information in the instructions for use ... you may be able to solve the problem yourself.

Stopping the programme ...

Press and hold the two reset buttons simultaneously for approximately 3 seconds while the programme is running (RESET)



"0" appears

The programme will stop after 1 minute

Switch off the appliance.

Loading the dishwasher correctly ...

Arrange dishwasher-proof utensils (having removed any ash, wax, grease, ink, sticky labels; remove, large remnants of jam, dairy products and food) according to the operating instructions and check that the spray arms can rotate freely.