

B/S/H/



Together for tomorrow

SUSTAINABILITY AT BSH

Home appliances and services that make everyday
life easier and focus on people and the environment

Dear readers,

the question that drives us is simple: How can we create a future worth living?

For BSH, sustainability is not an add-on – it is the foundation of how we innovate, operate, and take responsibility.

Climate change and the pressure on our planet's natural resources demand real action. As a company whose products shape daily life in millions of homes, we embrace the impact we can make. That is why we develop solutions that improve quality of life at home while reducing environmental and climate impact.

Our progress is tangible: since 2020, our locations worldwide have been operating CO₂-neutral. We achieve this through continuous improvements in energy efficiency, and we are continuously expanding our use of renewables and challenging ourselves to do even better.

But sustainability also means standing up for people. We are deeply committed to respecting human rights – within our own operations and across our global supply chains – and ensuring access to remedy where rights are at risk.

Join us on the following pages to see how we turn this commitment into action and discover how we are shaping a more sustainable future.

Cordially,



Christine Betz

Chief Sustainability Officer
BSH Home Appliances Group



Step by step into a sustainable future

BSH has a long tradition of commitment to sustainability. We have always worked to continuously improve the footprint of our production and our products. Let's take a look at a selection of milestones from the last 20 years.

1993

PIONEERING WORK FOR CLIMATE-FRIENDLY COOLING TECHNOLOGY

By switching to more climate-friendly refrigerants for cooling appliances, we were one of the first manufacturers to launch appliances on the market without CFC greenhouse gases.

2004

COMMITMENT TO GLOBAL RESPONSIBILITY

By joining the UN Global Compact, we have committed ourselves to actively supporting its ten principles in the areas of environmental protection, occupational health and safety, human rights and anti-corruption, both within BSH and at our business partners.

2008

INNOVATION MADE IN GERMANY

By using the energy-saving Zeolith technology, our team in Dillingen developed the most energy-efficient dishwasher in the world at that time.

2008

HONORED WITH THE GERMAN SUSTAINABILITY PRIZE

We were awarded the first-ever German Sustainability Prize in the "Germany's Most Sustainable Companies" category for our performance in sustainability along the entire value chain.



2009–2013

BENCHMARKS FOR MAXIMUM ENERGY EFFICIENCY

In the years 2009–2013, BSH bundled the most energy-efficient appliances in their class into a super-efficiency portfolio. The annual increases in efficiency were confirmed by an auditing company.

2020

CO₂-NEUTRAL OPERATIONS

Since 2020, our development and production at BSH sites worldwide have been CO₂-neutral. At the same time, we are consistently working to decrease our footprint by saving more energy and expanding renewable energy sources.

2023

FRIDGE-FREEZER COMBINATION WITH A REDUCED CO₂ FOOTPRINT

With the Bosch Green Collection fridge-freezer, we launched an appliance with a 33 percent reduced material carbon footprint thanks to the use of CO₂-reduced steel and bio-based plastics.* In 2024, the Bosch Green Collection was expanded to include a dishwasher with the best energy efficiency class A, which is made partly from CO₂-reduced stainless steel.

* Partly allocated by mass balancing (according to ISO 22095). In production, CO₂ reduced material is partly mixed with conventional material, but is allocated to the Bosch Green Collection fridge freezers. CO₂ reduction results from the use of CO₂ reduced steel and bio-based foam and plastic. The comparison refers to Bosch fridge freezer KGN39VXBT with conventional material.

A holistic approach for real change

At BSH, we have made it our mission to improve everyday life through sustainable solutions that fit seamlessly into household routines. In doing so, we pursue a holistic approach to sustainability which takes three central aspects into account: Environmental, Social, and Governance. This holistic approach forms the foundation of our successful business.

WE CONSOLIDATE OUR APPROACH BY EVALUATING AND BALANCING THE FOLLOWING ASPECTS:



ENVIRONMENT

We support climate protection, conserve valuable resources and offer consumers sustainable solutions.

SOCIAL

We strive for a socially sustainable future that is characterized by diversity, equity, and inclusion, and which improves the quality of life at home.

GOVERNANCE

Together with our partners, we strengthen ethical business conduct along the value chain.



For a more sustainable home

RESPONSIBILITY FROM START TO FINISH

We have set ourselves ambitious sustainability targets and are working consistently to achieve significant progress in all three areas by 2030.

ENVIRONMENT

Climate protection (Scopes 1, 2, 3)

We have operated our BSH sites worldwide carbon-neutrally since 2020 and they have been powered by 100 percent green electricity since 2025.

We aim to reduce our indirect Scope 3 emissions by 20 percent by 2030 compared to 2018 – focusing at the same time on the materials procurement, logistics and the energy consumption of our products.

Sustainable consumption

Through the use of our high-quality, energy- and water-saving home appliances and services, we contribute to sustainable consumption, the avoidance of food waste and the conservation of resources.

SOCIAL

Diversity and equality of opportunity

We aim to increase the proportion of women in leadership positions to 30 percent by 2030, while continuously building up the pipeline.

Health and safety

By applying our preventive health management, we aim to avoid accidents completely.

Contribution to society

We use our knowledge and resources in a targeted manner, in particular to support local initiatives and activities at our sites.

GOVERNANCE

Strengthening resilience

Respect for human rights along the entire value chain is an indispensable part of our responsible corporate governance.

We aim to achieve long-term profitability and resilience through sustainable business practices.

Since 2004, we have been committed to the UN Global Compact, whose ten principles play a central role for us.

We rely on strong cooperation and expect our partners to comply with clear standards, such as our purchasing conditions, quality agreements and the BSH Code of Conduct for Suppliers.



COMMITTED TO RESPONSIBILITY – AN OVERVIEW OF INITIATIVES AND PROJECTS

UN Global Compact – The UN Global Compact, the world's largest corporate sustainability initiative, promotes responsible business practices. Since 2004, BSH has committed itself to aligning its activities in accordance with the ten principles of the UN Global Compact.

CDP – The Carbon Disclosure Project (CDP) measures companies' environmental impact. Approximately 22,100 companies, including our parent company Robert Bosch, are currently disclosing environmental data through CDP. Bosch was rated "A" for its activities to protect the climate, making it one of the leading companies in terms of transparency and performance in these categories.

SBTi – The Science Based Targets Initiative (SBTi) supports companies in setting science-based climate targets in line with the Paris Agreement. 10,000 companies worldwide, including Robert Bosch, have SBTi-validated targets.

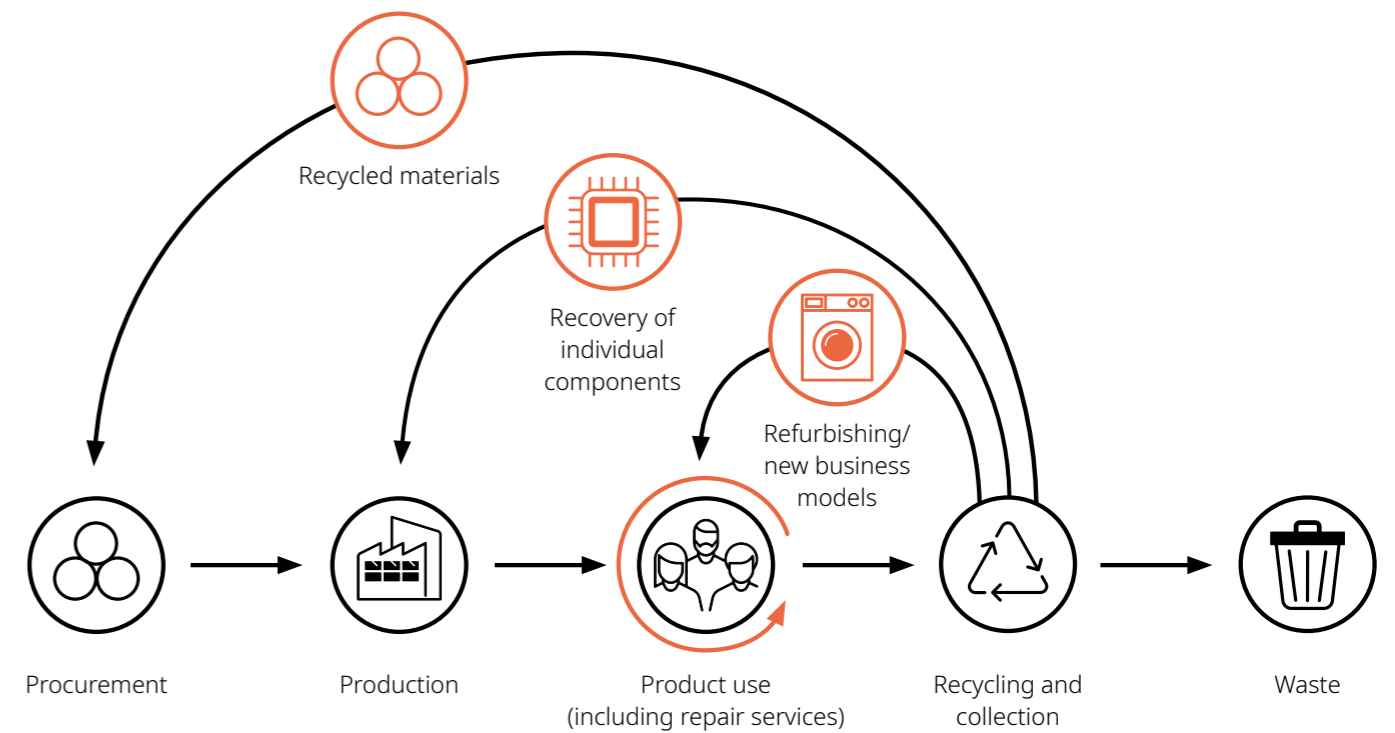


The product life cycle

RESPONSIBILITY FROM START TO FINISH

At BSH, we pursue a holistic approach that considers the entire life cycle of our products – from procurement, production, and use to after-sales services and take-back. For the use phase in our consumers' homes, our focus is on improving energy and water efficiency while ensuring long-lasting durability.

At the same time, we develop innovative business models to sustainably change the home appliance market. By using new business models such as leasing and sharing, we contribute to using appliances and resources more efficiently, and to minimize waste.



Procurement

SUSTAINABILITY BEGINS WITH THE MATERIALS

By 2030, we aim to reduce indirect greenhouse gas emissions along our value chain (Scope 3) by 20 percent compared to 2018.

Through increasing the use of recycled and CO₂-reduced materials, and by cooperating closely with our suppliers, we are driving forward an environmentally compatible value chain.

OUR PRODUCT INNOVATIONS: THE BOSCH GREEN COLLECTION

With the Bosch Green Collection, we focus on more sustainable materials such as CO₂-reduced steel and bio-based plastic to significantly reduce the CO₂ footprint. At the same time, the appliances come with the best energy efficiency class A, and help consumers to save money and to reduce CO₂ emissions through their use.

For our fridge-freezer combination, we use CO₂-reduced steel for the side panels and door fronts together with bio-circular and CO₂-reduced plastics for door shelves, vegetable trays, and freezer trays. This has enabled us to reduce the materials-based CO₂ footprint by a full 50 percent.*

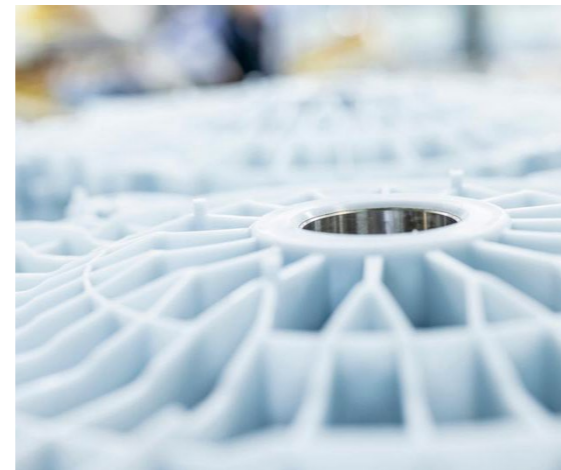
MORE SUSTAINABLE VALUE CHAINS THROUGH THE MASS BALANCE METHOD

The mass balance approach is an important step towards more sustainable materials. This method calculates more climate-friendly materials for specific products, even when this material is mixed with conventional raw materials during production. The products in the Bosch Green Collection use this approach to achieve CO₂ reductions of up to 70 percent for metals and 60 to 130 percent for plastics.

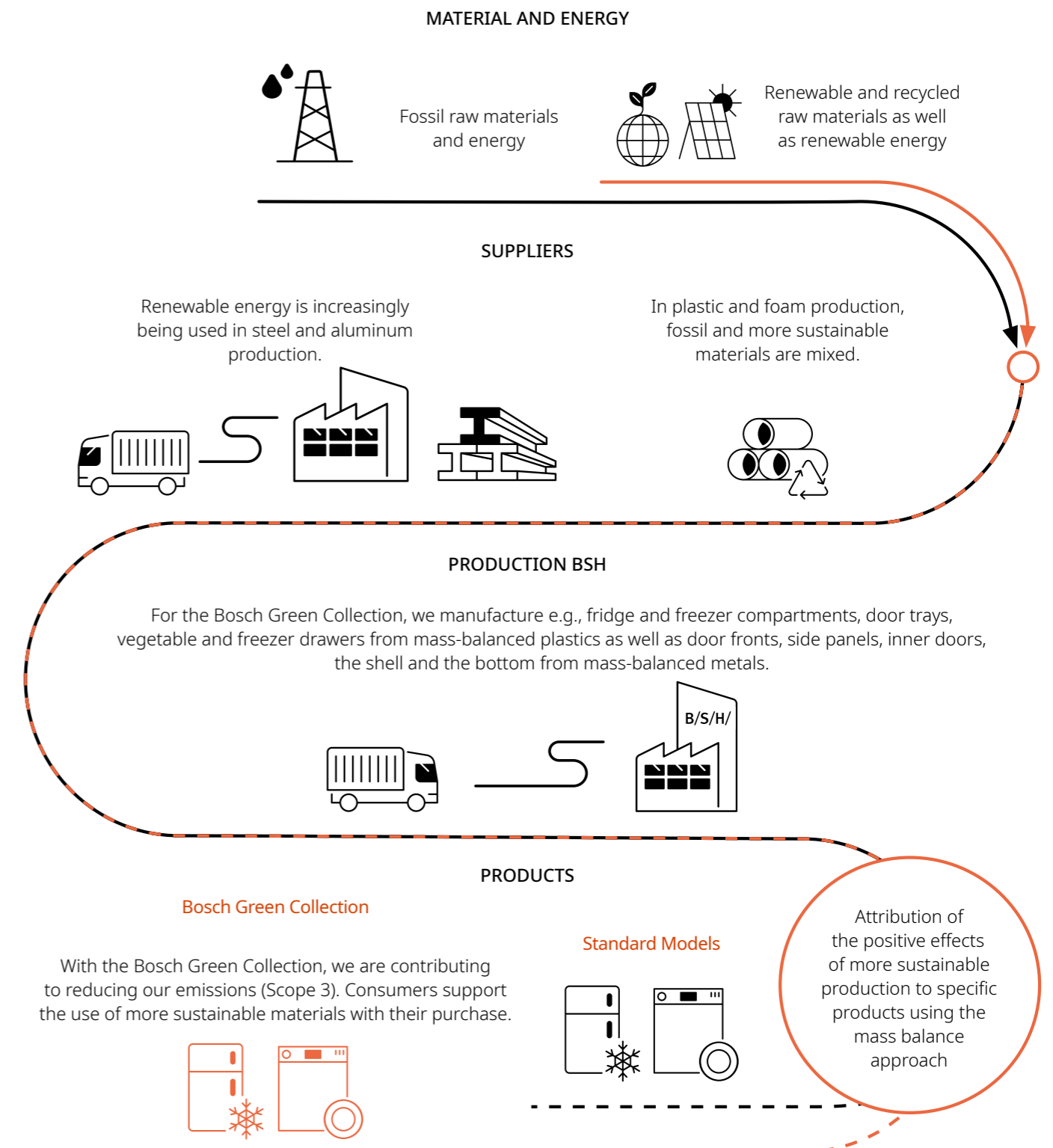
Bio-circular raw materials, for example from edible fats, are replacing fossil materials. CO₂-reduced materials are not yet being produced on a large scale, but manufacturers mix them with conventional materials during production.

This enables our suppliers to progressively switch their production from conventional to more sustainably produced materials.

The mass balance approach documents this progress, and is an important step towards more recycled materials.



The mass balance approach



* Compared to a comparable Bosch fridge-freezer using conventional production materials (standard size: KGN39VXAT, XL size: KGN492IAF). The CO₂ footprint of the production materials (excluding packaging) is calculated based on ISO 14067. In the production process, the CO₂-reduced material is partly mixed with conventional materials, but is allocated to the Bosch Green Collection fridge-freezers based on mass balancing (according to ISO 22095). Verified and confirmed by TÜV Rheinland.

Production

DETERMINED TO ACHIEVE LOW-EMISSION PRODUCTION

At BSH, reducing the environmental impact of our production is fundamental to our business. We have already operated CO₂-neutrally at our sites since 2020, and consistently focus on resource-conserving processes.

OUR FOUR LEVERS FOR SUSTAINABLE PRODUCTION

1. Energy efficiency

By 2030, we aim to save a total of 400 GWh of energy by further increasing our energy efficiency at our sites (Scope 1+2).

We saved 33 GWh in 2025 alone.

2. Generating green electricity

In 2025, we already exceeded our target of significantly increasing the share of renewable energies we generate ourselves by 2030.

In that year, we generated 102 GWh of green energy.

3. Purchase of green electricity

Alongside producing electricity from our own renewable sources, BSH relies on purchased green electricity. In 2025, we operated our facilities worldwide with 100 percent green electricity.

4. Carbon offsets

BSH offsets the remaining CO₂ emissions with carbon credits.

Our target is to reduce the proportion of offsetting to a maximum of 15 percent in absolute terms by 2030 (compared to the base year 2018).

WE ARE CERTIFIED – WORLDWIDE

Occupational health and safety, environmental, and quality management

All 37 factories (as of Q1/2026) are certified in accordance with ISO 45001, ISO 14001, and ISO 9001.

Energy management

Our production sites in the EU, Türkiye and China also have ISO 50001 certificates for energy management.

All sites are supported by environmental and occupational safety officers who report to our Central Environmental Protection and Occupational Safety Department, which carries out internal audits.





Product use

QUALITY THAT IS WORTHWHILE

At BSH, we focus on appliances that promote a sustainable lifestyle through their functions, quality, and durability – for today and tomorrow.

MAKE YOUR HOME MORE SUSTAINABLE WITH HOME CONNECT

Our smart home appliances enable the conscious use of energy and water – conveniently operated via the Home Connect app. Innovative functions ensure greater efficiency and resource conservation at the same time:

Smart Start

Smart Start intelligently recommends the optimal time for consumers to run their dishwasher, washing machine, dryer or washer-dryer, based on their energy data preferences: Maximize Renewables: To run a cycle using the highest share of renewable energy in the grid.

Cost savings: To run during the most cost-effective periods based on the consumer's dynamic or time-of-use energy tariff.

Home's Ecosystem: To integrate seamlessly, with their Home Energy Management System (HEMS), through partners.

With Smart Start, consumers can effortlessly reduce their energy bills and minimize their environmental impact.

Consumption dashboard

The energy and water consumption of our products can be monitored easily – including the effects of program changes.

This enables conscious decisions to be made in advance to reduce consumption.

Care & maintenance instructions

The Home Connect app provides timely information about necessary maintenance actions, so home appliances can be used in top quality for as long as possible.

Remote diagnosis

Our Customer Service team can inspect appliances remotely and solve problems efficiently, thus reducing unnecessary travel, lowering CO₂ emissions and conserving valuable resources. When repair visits are necessary, the targeted preparation enables an efficient approach.

Intelligent dishwasher program

This function automatically selects the optimum wash program to minimize water and energy consumption and to operate the dishwasher more sustainably.

OUR PRODUCT INNOVATIONS

Efficient drying through smart design

While air-drying laundry is the most energy-conscious choice, the Bosch Series 8 and Siemens iQ700 dryers offer a highly efficient solution for households that rely on tumble dryers. As the most energy-efficient dryers we have ever produced, our models achieve the highest energy efficiency class A, reducing energy consumption by up to 77 percent* compared to conventional dryers.

This performance is driven by innovative features, including optimized airflow, a self-cleaning condenser, and five brushless motors, which collectively contribute to a smaller environmental footprint, protect delicate garments, and help consumers save money.

Less microplastic

Our user-friendly microplastic filter can reduce microplastic emissions during washing by up to 97 percent.

The anti-microplastic program in our washing machines also reduces microfiber abrasion by up to 30 percent, resulting in less microplastic being released into the environment.

Customer Service

SAVING RESOURCES THROUGH DURABILITY & REPAIRABILITY OF APPLIANCES

We want consumers to enjoy our products for a long time. If service is required, our excellent Customer Service is there to help.



In 85 percent of cases, our roughly 10,000 technicians and service staff worldwide only need a single home visit to get the appliance up and running again quickly.

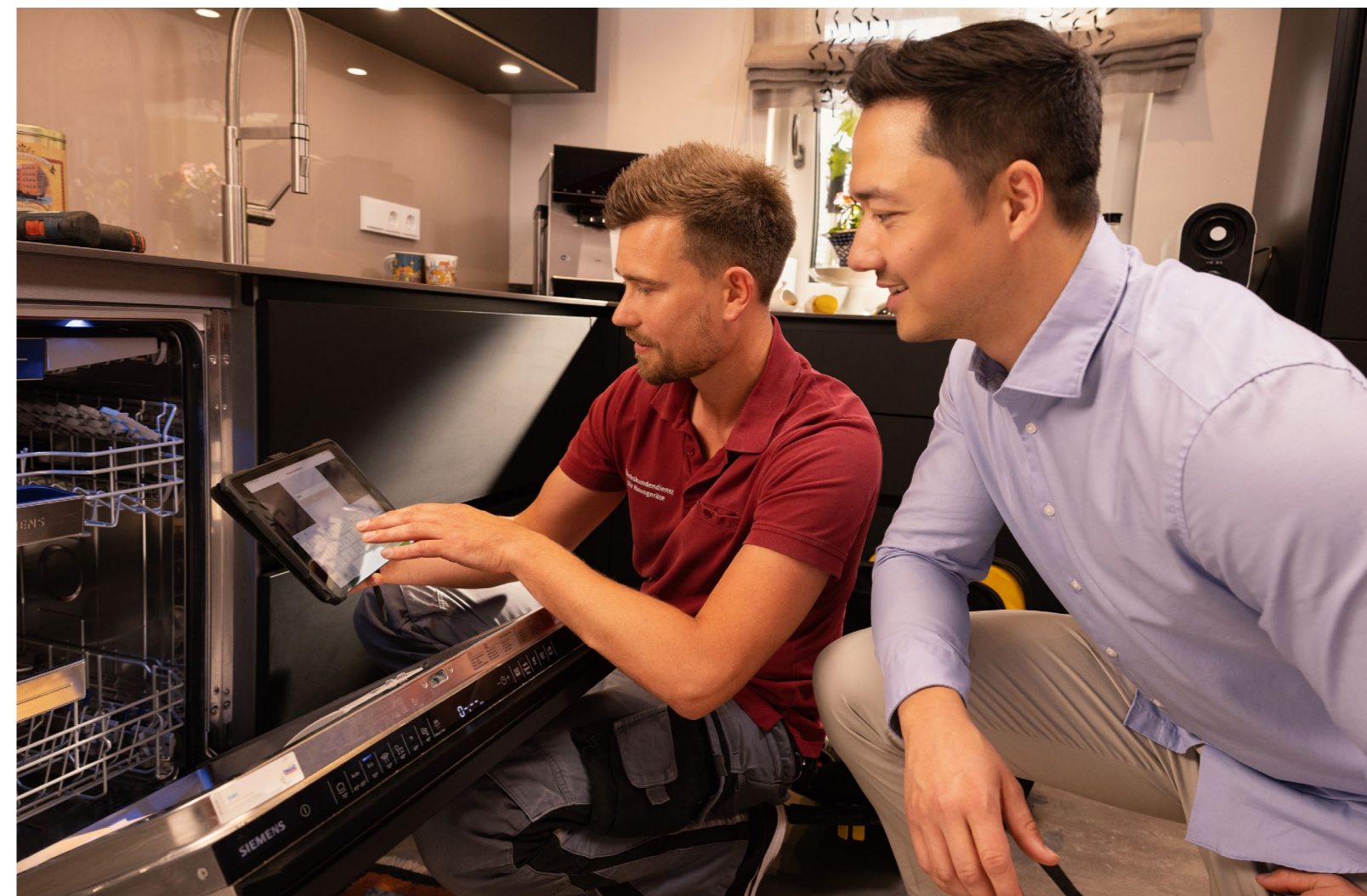


Seven logistics centers in the immediate vicinity of the BSH production sites ensure short delivery routes and have more than 350,000 spare parts in stock. This network is supplemented by 22 regional warehouses.



In 2023, we have extended the spare parts availability for large appliances from 10 to usually up to 15 years and for small appliances from 7 to usually up to 10 years.*

* For all functionally relevant and stockable parts for appliances manufactured after January 1, 2023.



* Energy savings of a modern Bosch heat pump dryer (WRB247C40) with a drying capacity of 9 kg and 79 kWh (energy consumption according to Regulation (EU) 2023/2534) compared to an old conventional Bosch dryer with a drying capacity of 9 kg from 2015 (WTG86400) with 349 kWh (energy consumption, also determined for comparison in accordance with Regulation (EU) 2023/2534).

New business models

DOING BUSINESS SUSTAINABLY AT THE CORE

With our new business models, we counteract the throwaway mentality and promote the reuse of valuable resources and the recycling of unrepairable home appliances, which are taken back by BSH.

“ALL-IN+” - A CIRCULAR ALL-INCLUSIVE BUSINESS MODEL

As inflation and sustainability pressures reshape consumption, BSH is expanding All-in+, its circular product-as-a-service (PaaS) model together with Bosch Home Comfort and strategic partners such as Wertgarantie.

Consumers, office or property managers alike can buy or rent new or professionally refurbished Bosch appliances for one transparent monthly price, with all services included: delivery, installation, repair, and replacement. Consumers gain affordable access to their home appliances of choice or innovations like the Bosch Cookit without high upfront investment, while businesses improve cash flow

and operational flexibility by avoiding ownership and stress. Impact: 91 percent of returned appliances are refurbished and reused, extending lifetimes by up to 20 percent* and reducing e-waste, positioning Bosch among the frontrunners of circular appliance consumption.

WEWASH - MODERN LAUNDRY ROOM SOLUTIONS

The BSH service brand WeWash offers a simple digital solution for using and billing communal laundry rooms. With more than 750,000 users and 10,700 installations in Europe, WeWash enables the convenient, energy-efficient use of Bosch laundry care appliances.

This not only saves time and effort,

but also reduces CO₂ emissions and costs for laundry room operators.

THE PAPILLON PROJECT - LEASING FOR A GOOD CAUSE

Our Papillon project in Belgium supports low-income families by renting out resource-efficient Bosch home appliances at a favorable cost.

In cooperation with the social enterprise SAAMO West-Vlaanderen, the Papillon project replaces obsolete appliances, thus helping to save household operating costs in the long term and promoting refurbishment or high-quality recycling after take-back. The appliances can also be booked online via the Papillon website.

* DNV AS was commissioned to perform a study and has analyzed the expected lifetime extension for major domestic appliances refurbished after the warranty period within the model, in Germany. In order to identify the impact, DNV has used the principles of ISO 14021 for self-declared environmental claims. DNV is a global independent leading expert in assurance, risk management and sustainability, headquartered in Norway.





BSH is Europe's No. 1 home appliance manufacturer*

Founded in 1967 as a joint venture between Robert Bosch GmbH (Stuttgart) and Siemens AG (Munich), BSH has been wholly owned by the Bosch Group since January 2015. In its company history of almost 60 years, BSH has developed from a German exporter into one of the world's leading manufacturers of home appliances. With more than 56,000 employees, BSH achieved a total turnover of EUR 15.0 billion in 2025. BSH produces its entire range of modern home appliances at 37** factories worldwide.

WHICH HOME APPLIANCES DO WE MANUFACTURE?

BSH's product portfolio covers the entire spectrum of modern home appliances. Its global, regional, and local appliance brands offer a wide range of products, including cooktops, ovens, ventilation hoods, dishwashers, washing machines, dryers, refrigerators, freezers, and small home appliances such as vacuum cleaners and coffee machines. Our aim is to inspire our consumers with our products and additional services and to contribute to the success of our customers.

More at: <https://www.bsh-group.com/products-brands/appliance-brands/>

HOME APPLIANCES UNDER THE BRANDS



SERVICE BRANDS



* In value
** As of March 2026

Imprint

PICTURE CREDITS

The image rights owner is BSH Hausgeräte GmbH. Reproduction/reprinting of individual graphics, images and texts is not permitted without the written consent of BSH Hausgeräte GmbH.

CONCEPT AND DESIGN

segmenta communications GmbH

DISCLAIMER OF LIABILITY

All information in this publication has been collected and processed with the utmost care. Nevertheless, errors cannot be completely ruled out. All forward-looking statements were made based on assumptions and estimates that existed at the time of publication.

© 2026 BSH Hausgeräte GmbH

BSH is a company of the Bosch Group

