

T24IF100SP

24-INCH BUILT-IN FREEZER COLUMN WITH INTERNAL ICE MAKER

FREEDOM® COLLECTION, PANEL-READY



*Preliminary Renderings, Not Final



FEATURES & BENEFITS

- **Beauty Meets Visibility** – Large skylight and sidewall LEDs, illuminate the interior beautifully, making contents easy to find from any angle.
- **Elevated Small Ice** – Our all-new exclusive 1/4 carat diamond-shaped ice that cools drinks quickly and uniformly, easily accessed through a slide-out drawer, with a quick ice function for unexpected moments.
- **Elegant Interior Aesthetics** – Easy-to-clean metal door bins, sleek adjustable glass shelving, and SoftClose® drawers, all crafted from metal and glass for a stylish, durable environment.
- **Get Cooler Faster** – SuperFreeze® drops to -22°F, rapidly restoring softening ice creams, meats, and other goods to their optimal frozen state.
- **Free Flow® Cold Air System** – Ensures uniform airflow and optimal cooling across all compartments for unmatched performance and precision.

INNOVATION

Skylight & Full Sidewall LEDs	Yes
Wi-Fi-Enabled For Control with Home Connect® App	Yes
Bite Sized 1/4 Carat Diamond Ice	Yes
Full Stainless Steel Interior	Yes

PERFORMANCE

Quick Ice	Yes
Automatic Defrosting	Yes
Modes	Eco, Sabbath, Shopping, Vacation, Demo, Quick Ice, SuperFreeze®
UltraClarityPro® Water Filter (6 Months)	Yes

CAPACITY AND STORAGE

Total Capacity (cu. ft.)	14.27
Ice Maker Drawer Capacity (cu. ft.)	TBD
Full-Extension Freezer Storage Drawer	2
Full-Extension Icemaker Drawer	1
Storage Shelves	3 Adjustable, 1 Fixed
Metal Door Bins	3 Adjustable, 1 Fixed

GENERAL FEATURES

Touch Screen LED Panel	Yes
Water Filter Replacement Indicator	Yes
Single Ice Makers with Chewable IceDots	Yes
Ice Production (24 Hrs.), IceDots (lbs.)	TBD
Ice On / Off	Yes
Quick Ice	Yes
Ice Storage Capacity (lbs.)	TBD
LED Interior Lighting	Yes
Open Door Assist	Yes
Open Door Alarm	Yes
Childproof Lock	Yes
Cooling System	Free Flow® Cold Air System
Maximum Sound Level	39 dBA
SoftClose® Door	Yes
SoftClose® Drawers	Yes
Star-K Certified Sabbath Mode	TBD
ENERGY STAR® Certified	TBD
Annual Energy Consumption	TBD kWh / yr*

OPERATING TEMPERATURE

Freezer: -7°F (-22°C) to 6°F (-14°C)
 SuperFreeze®: -22°F (-30°C) for Approximately 8 Hours

INSTALLATION FEATURES

Four Point Front Adjustable with 4 Wheels	Yes
Attachment Method to Cabinetry	4 Fixation Brackets, Fixed at 4 Corners of Appliance, No Visible Screws
Front Serviceable	Yes
Anti-tip Bracket Included	Yes
Side Trim Kit Included	Yes
Door Reversible	Yes

PRELIMINARY
PRELIMINARY
PRELIMINARY
PRELIMINARY

T24IF100SP
24-INCH BUILT-IN FREEZER COLUMN WITH
INTERNAL ICE MAKER
FREEDOM® COLLECTION, PANEL-READY



TECHNICAL SPECS

Required Power Supply	110-120 V, 60 Hz, Min. 10 Amp
Plug Type	3-Prong
Power Cord Length (Inches)	118"

DIMENSIONS AND WEIGHT

Appliance Dimensions (HxWxD) (inches)	83 9/16" Min. – 85 1/2" Max. x 23 3/4" x 24"
Required Cutout Size (HxWxD) (Inches)	84" x 24" x 25"
Net Weight (Approx.) (lbs.)	327
Gross Weight (Approx.) (lbs.)	349

*Estimated annual energy consumption. Exact usage may vary.

WARRANTY

Limited Warranty, Parts & Labor	2 Years
Limited Warranty, Sealed System and Compressor, Parts & Labor	6 Years
Limited Warranty, Sealed System and Compressor, Parts Only	12 Years

SUPPLEMENTAL MATERIAL

CAD File	TBD
Installation Manual	TBD
Use & Care Guide	TBD
Warranty	TBD
Energy Guide	TBD
Home Connect® Quick Start Guide	TBD

ACCESSORIES (OPTIONAL)

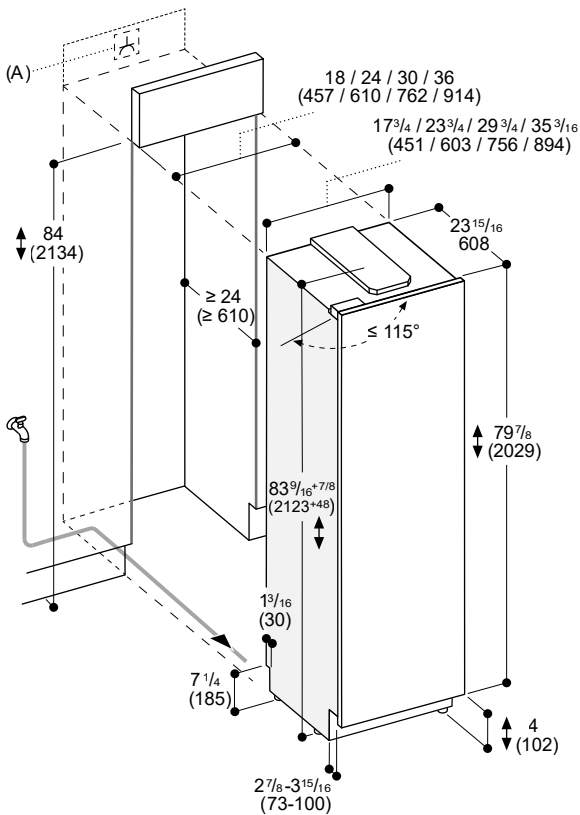
COMING SOON

PRELIMINARY
PRELIMINARY
PRELIMINARY
PRELIMINARY

T24IF100SP
24-INCH BUILT-IN FREEZER COLUMN WITH
INTERNAL ICE MAKER
FREEDOM® COLLECTION, PANEL-READY

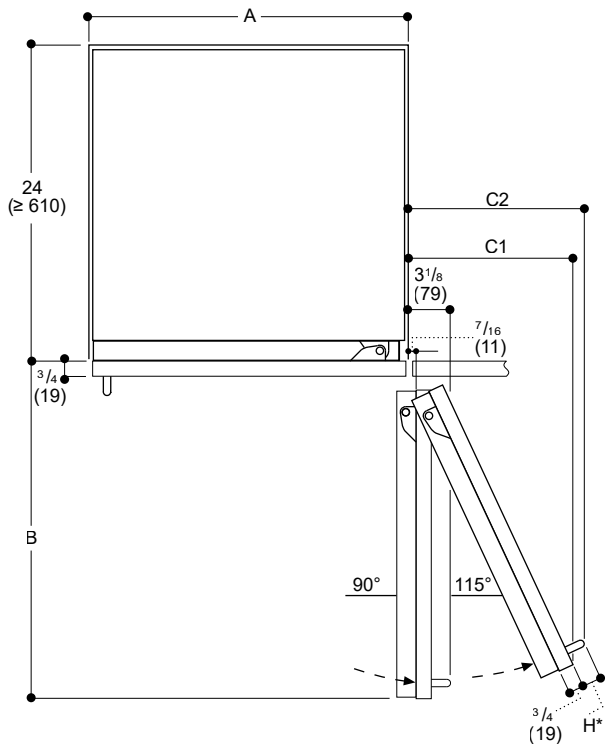


PRODUCT & CUTOUT DIMENSIONS



A: Electrical hook-up
The maximum door panel dimensions are based on a clearance of 1/8" (3 mm)
The height of the toe kick can be reduced to 2" (50 mm)
Measurements in inches (mm)

TOP VIEW CLEARANCES



Niche width				
A	B	C1	C2-Masterpiece	C2-Professional
18 (457)	20 1/16 (525)	9 1/4 (235)	TBD	
24 (610)	26 5/8 (677)	11 3/4 (299)		
30 (762)	32 11/16 (830)	14 5/16 (364)		
36 (914)	38 1/16 (970)	16 3/16 (420)		

The drawing is based on a door panel thickness of 3/4" (19 mm)
as well as the *handle height (options below):
Thermador Masterpiece handle of 2 1/4" (56 mm)
Thermador Professional handle of 2 5/8" (67 mm)
Measurements in inches (mm)

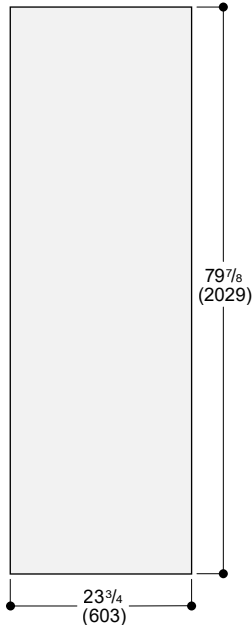
PRELIMINARY
PRELIMINARY
PRELIMINARY
PRELIMINARY
PRELIMINARY

T24IF100SP
24-INCH BUILT-IN FREEZER COLUMN WITH
INTERNAL ICE MAKER
FREEDOM® COLLECTION, PANEL-READY



PANEL DIMENSIONS

Niche width 24" (610 mm)

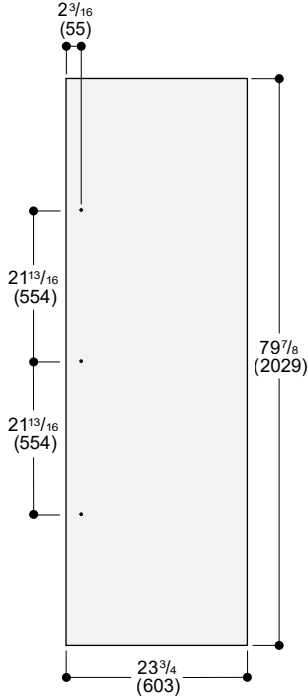


The door panel thickness is 3/4" (19 mm)
The maximum door panel dimensions are based on a clearance of 1/8" (3 mm), based on a single niche

Measurements in inches (mm)

PANEL DIMENSIONS WITH HANDLE

Niche width 24" (610 mm)



The door panel thickness is 3/4" (19 mm)
The maximum door panel dimensions are based on a clearance of 1/8" (3 mm), based on a single niche

Measurements in inches (mm)

These warranties give you specific legal rights and you may have other rights that vary from state to state. Limited warranty from date of delivery. For complete warranty details, refer to your Use & Care manual, or ask your dealer.

Specifications are for planning purposes only. Refer to installation instructions and consult your countertop supplier prior to making counter opening. Consult with a heating and ventilation engineer for your specific ventilation requirements. For the most detailed information, refer to installation instructions accompanying product or write to Thermador indicating the model number. Specifications are correct at time of printing. Thermador reserves the right to change product specifications or design without notice. Some models are certified for use in Canada. Thermador is not responsible for products that are transported from the U.S. for use in Canada.