



Rue Picard, 7 - 1000 Bruxelles



Gare du Nord

+ 14'

+ 5'

+ 5' Shuttle

B 14 20 57

T 3 4 25 32 55

Saintelette

+ 11'

+ 4'

T 51

Ribaucourt

Yser

+ 8' / + 3'

+ 14' / + 7'

M 2 6

Pannenhuis / T&T

Belgica

+ 14' / + 6'

+ 9' / + 4'

M 6

Picard

+ 2'

B 14 88 89

Tour & Taxis

+ 4'

B 14 20 57 88

Comte de Flandre

+ 14'

+ 5'

M 1 5

Public transport, on foot or by bicycle?

FIND YOUR WAY THROUGH BRUSSELS

Moving around Brussels is easier than you'd think! Leave your car at home! Pick up your bicycle or choose public transport over your car. Follow the guidebook and find the best way to travel to Tour & Taxis. The green lines are the most important cycle lanes. If you come from Flanders, take a look at www.fietssnelwegen.be

Brussels-North

By bus

Take one of the 4 MIVB buses (14,20,57,88) stationed at Brussels-North. You will be travelling from Simon Bolivarlaan to your destination, near Tour & Taxis (Havenlaan). Duration 5 minutes.

Shuttle Service

A free and regular shuttle service is provided every day of the week for visitors of the Tour & Taxis site from 5.30 AM to 10 PM. There are shuttles travelling every 5 to 10 min. from Brussels-North (Simon Bolivarlaan) to the site of Tour & Taxis, back and forth. An extra stop is included between noon and 2PM at Rogier Plein. More info: www.tt-app.be

On foot

Walking distance or travelling by bicycle is equally convenient. (10 min tops) Sidewalks and isolated bike paths ensure that you arrive safely.

Brussels-Central

Train+Bus

Take the train from Brussels Central and you'll find yourselves 4 min later on the platform of Brussels North station. Then you choose one of the 4 available MIVB buses or the shuttle service. You'll reach your destination within 20 minutes.

By Bike

You'll arrive at Tour & Taxis in less than 15 minutes pedalling. If you travel by a Villo bicycle, you'll find a station available in front of the entry of the site, in Rue Picard.

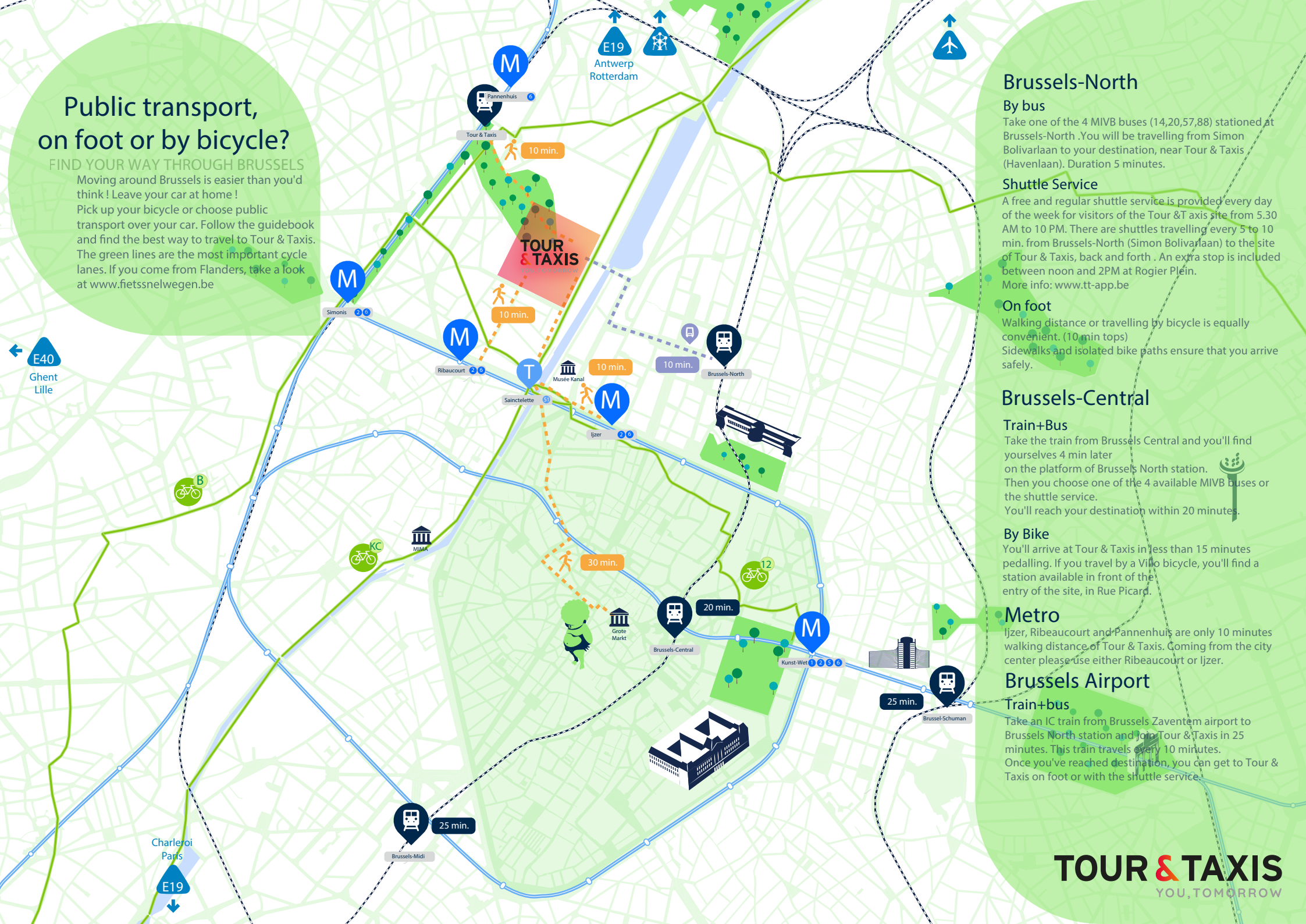
Metro

Ijzer, Ribeaucourt and Pannenhuis are only 10 minutes walking distance of Tour & Taxis. Coming from the city center please use either Ribeaucourt or Ijzer.

Brussels Airport

Train+bus

Take an IC train from Brussels Zaventem airport to Brussels North station and join Tour & Taxis in 25 minutes. This train travels every 10 minutes. Once you've reached destination, you can get to Tour & Taxis on foot or with the shuttle service.



On your way to Tour & Taxis

Do you wish you could spend less time in a traffic jam and catch a different glimpse of the city? There are alternative and efficient solutions available to you to get to Tour & Taxis.



Train

Brussels North station can be accessed easily throughout Belgium. It is situated on less than 1km of distance to Tour & Taxis. Pick the most appropriate transport to reach your destination. (bus, Tour&Taxis shuttle service, on foot, scooter, etc.)

TIP: Did you know you could bring your folding bike along on the train, free of charge? The train and the folding bike are such a great combo to get to explore the city and travel to Tour & Taxis. You can put away your folding bike in one of the free available lockers.



Cycling is healthy

A broad cycle lane is accessible from the small ring along the Tour&Taxis site. Another good reason to travel to Tour&Taxis by bicycle upon arrival, you will find many available parking spots.

TIP: you didn't bring your bicycle along? Don't panic! You can always rent a Villo and park it in front of Tour & Taxis (Picardstraat) More information on www.villo.be

Do you have a preference for free floating and electric bikes? Think of JUMP!Book your self service red bike through your Uber-app. Great idea, isn't it? In any case, don't forget to lock up your bicycles properly on a bike parking rack on the Site or in the surrounding neighbourhood.

Take the Shuttle Service

A free shuttle service is provided every weekday from 5.30 AM to 10 PM. Every 5 to 10 min, a shuttle service travels from Brussels North station (Bolivar square) to the site of Tour & Taxis, back and forth. Get on it!

Shuttle Timetable: www.tt-app.be



Ever heard of sharing your ride ?

you probably know someone in your neighbourhood or a colleague travelling to the Tour & Taxis site! Isn't that the case? Not to worry! Carpool platforms such as Carpool or Blablacar are there to assist you. Contact the driver or passenger and make proper arrangements. Enjoy your ride!

TIP: www.carpool.be, www.blablacar.be



Parking space

Paid parking space inside the Tour & Taxis site for the visitors

VISITORS FOR EVENTS THROUGHOUT THE WEEKDAYS, BEFORE 6 PM
Visitors of events taking place throughout the weekdays, before 6pm, are allowed to use the entrance of Parking Havenlaan 88. 6 euros per car / per day (fixed price).

VISITORS FOR EVENTS THROUGHOUT THE WEEKDAYS, AFTER 6PM
Visitors of events taking place throughout the weekdays, after 6pm or during the weekend, are allowed to use the entrance at Havenlaan 86C. 7 euros per car / per day (fixed price).

FOR OFFICE VISITORS
you are allowed to park on the Esplanade parking place (20 euros per car/per day or 3 euros/ hour) through the Havenlaan 86c.

Parking on the streets
the Havenlaan and Picardstraat are situated in the blue zone. In case you don't own a residence card : you can park for free for a max. of 2h with a parking disc in these blue zones.



Car sharing

Car sharing service provided at the Tour & Taxis site

Two Cambio cars are available on the Site, at the side of the Havenlaan. To be able to book the cars, you need to simply register through the cambio website www.cambio.be, and have a car at your disposal any time. Convenient for all trips in and out of town.

Electric car sharing service? it's a real thing! And they are easily accessible from the Tour&Taxis site. Register on www.zen.car.be and get swept off your feet, through the city and even further away, with a reach of more than 300 km per vehicle.

Two spots are reserved for DriveNow cars at the entrance of the site. It can come in pretty handy when cruising through the city or getting to a professional meeting. Get more information at www.drivenow.be



Electric step scooters

Self service electric step and scooters are available in Brussels and are very convenient. Kick-start your step scooter from a subway station or a train station till you've reached your destination. Don't forget to park your scooter near a bike parking, as not to obstruct the passage of any passersby.

Download the app's : Scooty, Lime, Dott en Uber

All you need to know on mobility?



Browse through the 150 articles in the Maestromobile Toolbox, introducing and describing all mobility services available in Brussels.

TIP: <https://toolbox.maestromobile.eu/nl/>



Entrance

Cars
Havenlaan 86C : open 24/7
Havenlaan 88 : open 24/7
Picardstraat 3 : open van 7h00 tot 19h00

Delivery
Havenlaan 86C : Koninklijk Pakhuis
Havenlaan 88 : Events Sheds,
Leefmilieu Brussel, VAC Herman Teirlinck
Picardstraat 3 : Hôtel de la Poste, Publicis

Bicycles
Alle ingangen zijn 24 uur per dag en 7 dagen per week geopend.



Locker room and Showers

For a fresh start at the office : There is nothing like a shower and changing clothes after having pedalled for a few miles.

Bike Parking

There are different availabilities to park your bicycle. Many bike parking racks are available on the site. Do you work at the Koninklijk Pakhuis? An underground bike parking shed is at your disposal.



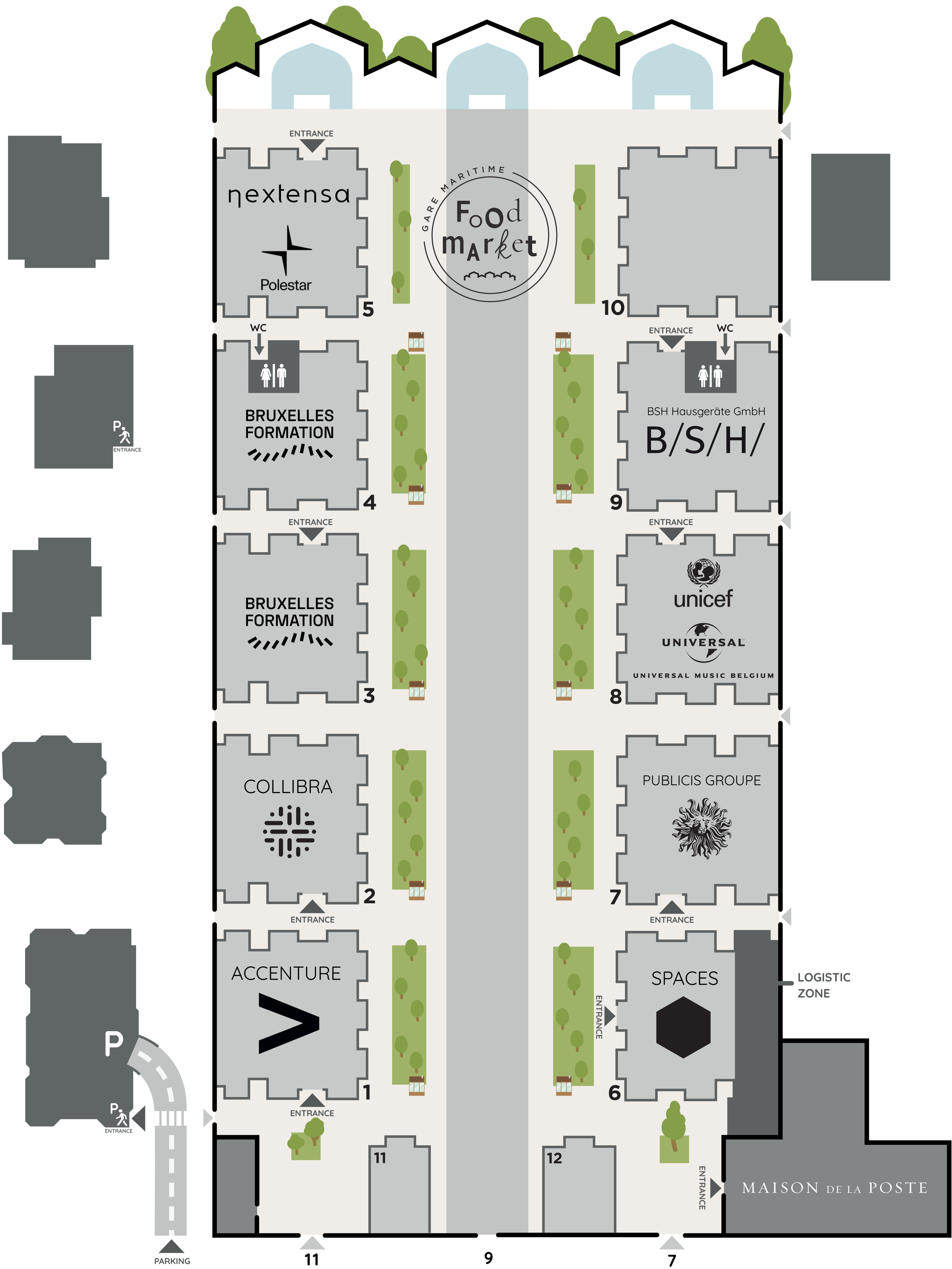
Power up!

Would you like to power up your electric bike? Piece of cake! Go to the charging station!



GARE MARITIME

PARK



RUE PICARD / PICARDSTRAAT

Plan Tour & Taxis

