

Experience perfection in Dishwashing.

Introducing the all-new range of Siemens dishwashers with innovative technologies like **Home Connect**,[^] **3-Stage rackMatic basket**, **Touch panel features** which bring convenience to your fingertips.

Siemens Home Appliances

SIEMENS



BSH Group is a Trademark Licensee of Siemens AG.

Experience perfection in Dishwashing.

Introducing the all-new range
of Siemens dishwashers with
innovative technologies like
Home Connect, **3-Stage rackMatic
basket**, **Touch panel features** which
bring convenience to your fingertips.

SIEMENS



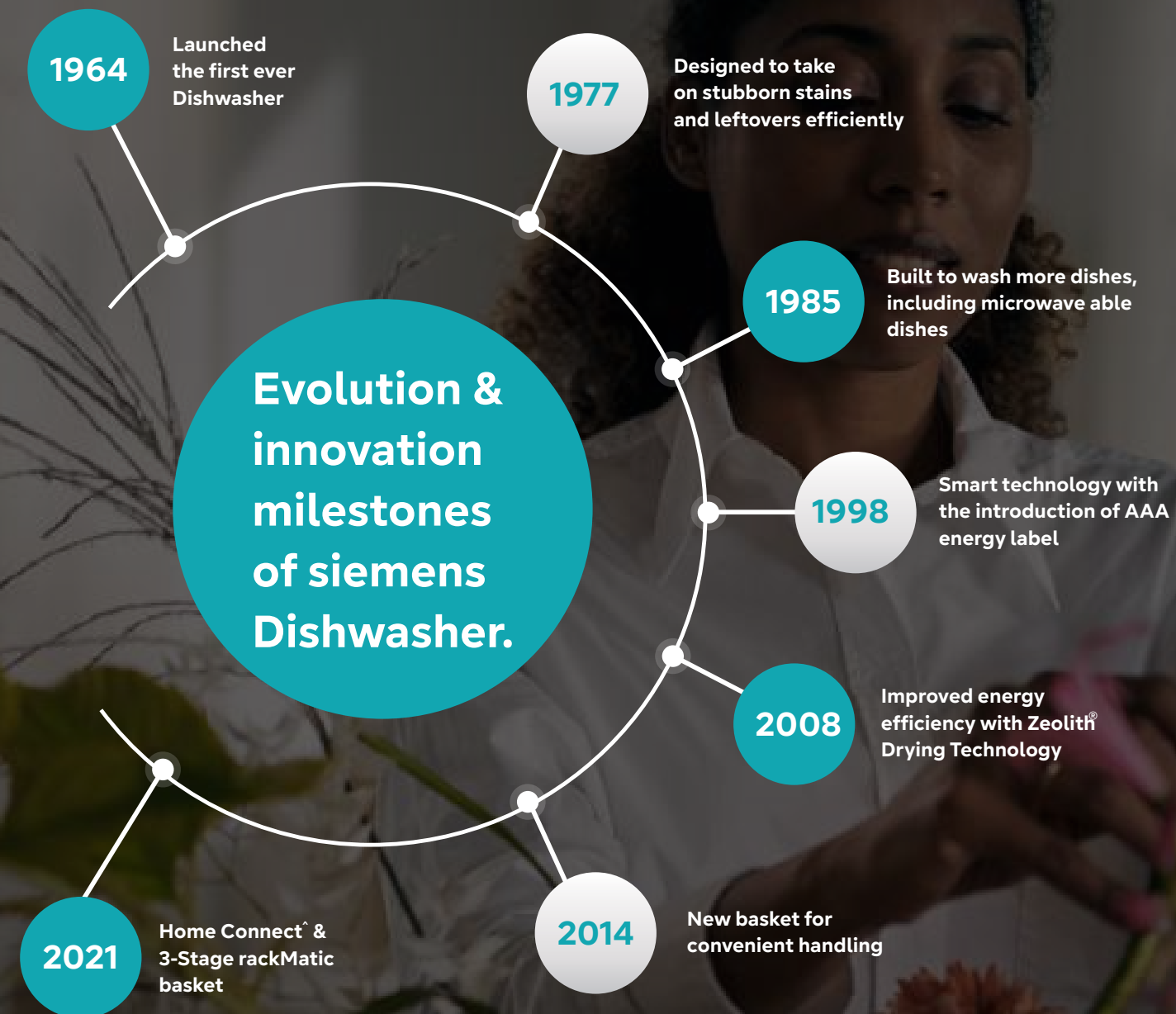
Siemens Home Appliances



"I won't sell the future, for a quick profit."
- Werner Von Siemens (1816 – 1892)

Siemens AG was founded as the Siemens & Halske Telegraph Construction Company by Werner Von Siemens and J.G Halske in 1847. Siemens and Halske manufactured the first pointer telegraph in Berlin. Siemens is regarded as a technology giant in over 200 countries. Significant contributions in the fields of energy, communications, information, transportation, healthcare, components and lighting.

Evolution



Siemens is the most awarded
Dishwasher brand in the world.



Designed to fit in and around your busy lifestyle, our standard 60cm dishwasher features efficient, time saving and environmentally conscious programmes that are going to make your dishes shine. With sleek and stylish design, both inside and outside, Siemens dishwashers are designed to complement your home.

Cutting edge features
for that extra shine.





When it comes to automated dishwashing, to begin with, you DO NOT need to manually rinse the utensils. Just scrape off the leftovers present on the utensils before loading them. Place the dishes in the dishwasher and when the loading is complete, select one of the many programmes tailor-made to take care of your utensils. Just wait for the washing to complete to get dry, shiny and hygienic utensils.

What happens inside?

Four stages in the washing cycle.



Pre-rinse
The pre-rinse cycle effectively wipes out every stubborn food particle stuck on the utensils by using hot water to pre-wash. Followed by this process, the machine drains out the water.



Washing Cycle
In the wash cycle, hot water plays an important role. Once the process is complete, the machine seamlessly drains out all the water.



Rinsing
For every rinse cycle, the system instinctively takes fresh hot water inside the Siemens Dishwasher. Due to the added Rinse Aid, the surface tension of the water drops resulting in dry and sparkling clean dishes, leaving no trace of water spots.



Drying
The inner walls of the dishwasher are heated as hot water is used during the wash cycles. During the drying process, heat from the walls is released which ensures 100% drying of utensils.



Crafted for a sparkling and hygienic experience!

When it comes to greasy utensils and germs, our 70°C hot water wash makes sure that your dishes are 99.99% germ-free with a squeaky clean shine and an odour-free experience.

70°C

Hot Water Wash

99.99%

Kills Germs

Two of the most important things we can save and do our environment a world of good is in electricity & water. Our dishwashers work efficiently by consuming just 9.5 litres of water and less than a unit of energy per wash.



We help you
save on what
matters the most!

Save loads of water & electricity too!



Enhance the orderliness
within your kitchen

Get used to an immaculate kitchen as your utensils
perfectly fall in line and stack up, giving you more
space and convenience.

rackMatic: for your flexible needs

Leap into the power of innovation with utmost flexibility
offered by the 3-Stage rackMatic basket which comes
with the smart clip that helps you adjust at 3 levels
vertically making sure that everything finds its place-
from large pans to small plates.





Home Connect[^]: Surround yourself with smartness.

Control your dishwasher through the Home Connect[^] mobile app and in just a few taps unravel the future of connectivity anywhere, anytime.



Remote Monitoring & Controlling

Experience a smart way to track every move of your dishwasher. With a few taps, you can get easy access to current status of your dishwasher on the go. This includes starting and ending a program, notifications when the washing is done and also enabling you to adjust the settings from a remote location.



Downloadable Programs*

The Home Connect[^] app allows you to seamlessly download the program of your choice as per your cleaning and specific utensil requirements.



Notification & Reminder

Getting notifications like low rinse aid/salt levels and low detergent levels can be as easy and effortless. The Home Connect[^] app brings to you all the important updates right on your mobile phone or smart watch and also reminds you to buy a new package of tablets when needed.



Remote Diagnostics*

Our advanced systems empower our customer service to remotely determine the issue. This further aids our technicians to assist you better as they are aware of the issue reducing time and effort at both ends.



Voice Assistance

It seamlessly integrates with Alexa and Google Assistant. Just by your mere voice, you can easily switch your dishwasher on and off. The voice control function also gives you a check on the duration of the washing cycle.



Easy Start Assistance

Discover a world of convenience that guides you on your dish cleaning preferences in accordance to your dish type. It also recommends the ideal programmes/ options to be used anywhere, anytime.

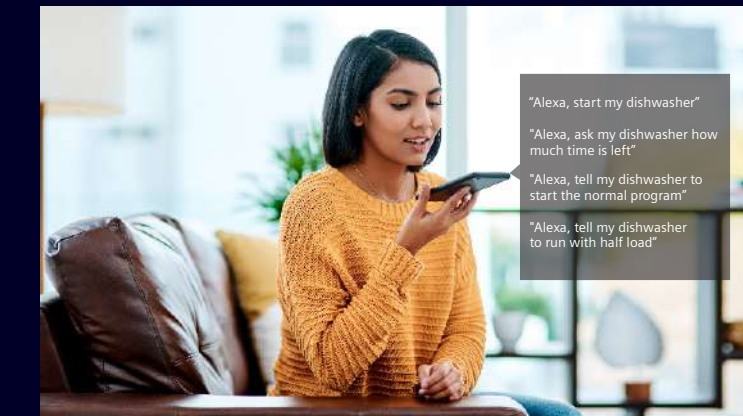


Favorites

The Home Connect[^] app powers you to save all your favorite programs on the home screen for easy access and better navigation.



Appliance software update through Home Connect[^].



"Alexa, start my dishwasher"
"Alexa, ask my dishwasher how much time is left"
"Alexa, tell my dishwasher to start the normal program"
"Alexa, tell my dishwasher to run with half load"



Connected Partner

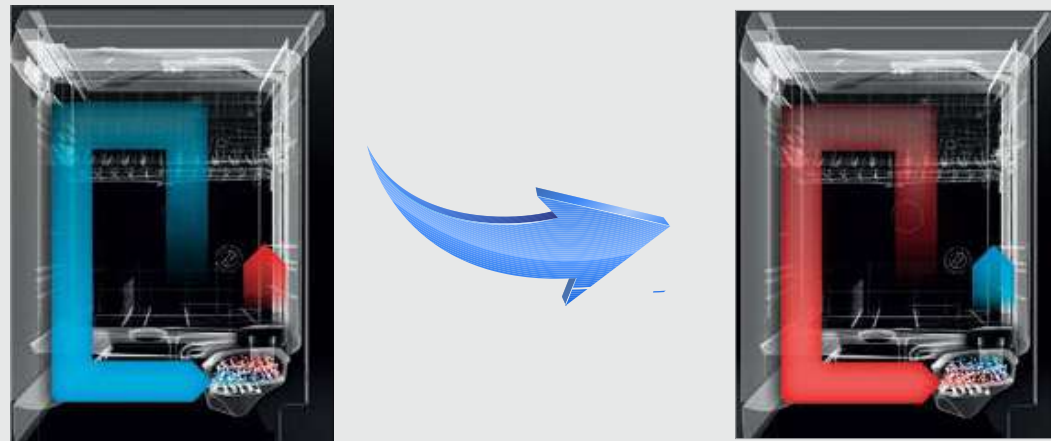


*Home connect[^] is currently available in 9 cities (Mumbai, Pune, Bangalore, Hyderabad, Chennai, Jaipur, Kolkata, Ahmedabad, Delhi) and will be available in the other cities very soon. Remote diagnostics and downloadable programme will be available soon in India.



Dry efficiently
and rapidly
with **Zeolith**
Technology

Zeolith®, super-efficient drying patented technology.



Drying phase Zeolith® absorbs moisture and converts it to heat energy.

Cleaning phase as the mineral is heated during the cleaning cycle, it is recharged and ready to absorb moisture once more.

The mineral zeolite has the ability to absorb moisture and convert it into energy. The versatile material thus ensures faster, energy-efficient drying of your dishes.



Fast enough to break world record

Siemens dishwashers are powered by Zeolith drying technology which reduces the complete cycle by 28% than regular dishwashers. This makes us, by a fair distance, the fastest in the world. That's not it; the energy consumption too is at a record 0.8 kWh with a phenomenally quick wash time.



The revolutionary Zeolith® drying technology

Take a leap into the future as your dishes are dried up exceptionally fast and super efficiently. Zeolite is a natural mineral that is capable of absorbing moisture and converting it into thermal energy. This heat is emitted, drying your dishes - even plastics, quickly and energy-efficiently.

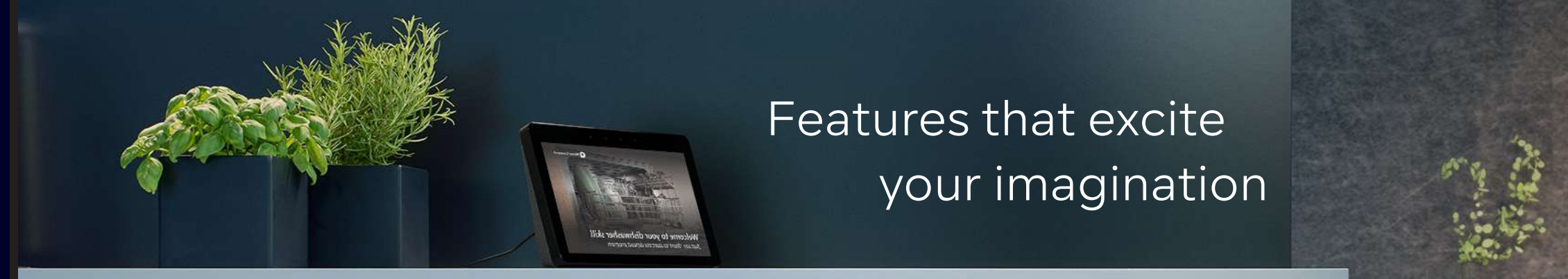


Greater overview, more convenience

Our touch panel is not only beautiful, but also intuitive in design and utterly convenient. Sleek in appearance and crafted exquisitely, it offers all functions at your fingertips.

Dosing with precision

The dosageAssist feature drops the tablet into a specially designed tray making sure the water jets precisely target the tablet resulting in an accurate and even dissolution giving you the efficient utilization.



Features that excite your imagination



Innovated for Indian utensils

When it comes to an Indian kitchen, utensil stains and space are two things that are a cause of concern. Not anymore. The intensive 70° C cleaning ensures that toughest oily & greasy masala stains on pots & pans are taken care of with ease while making sure all fit in seamlessly.



Protects your delicate glassware / crockery

Our dishwashers are glass-aware of your glass ware. Thanks to the 40°C Glass dedicated program that gently washes your glassware & crockery, giving it sparkling shine while avoiding breakage.



varioSpeedPlus

Sparkling clean dishes in the quickest possible time is what everyone wants. Exactly the reason we have the varioSpeedPlus feature for our range of dishwashers that saves up to 66% of wash time. All it takes is a touch of a button.



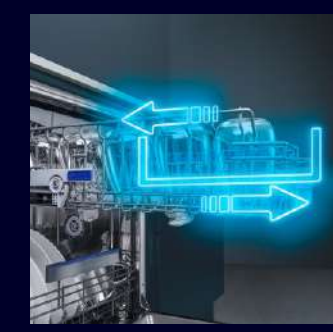
iQdrive

Siemens Dishwashers are powered by the revolutionary iQdrive motor which is quieter, faster and more efficient. They improve the energy performance of the dishwasher. Set your dishwasher to use less energy while maintaining the same performance level. Its innovative magnetic technology drives the iQdrive without friction for a virtually wear free operation.



Half Load

Standing true to its name, the half load does its job of seamlessly washing half the load of dishes while saving on water and energy. A perfect option in case you are in a hurry or have a lesser load.



easyGlide

The smooth-running pull-outs allow the baskets to glide smoothly and quickly, making it particularly convenient to put them in and take them out, even when fully loaded.

Freestanding Dishwasher



Freestanding Dishwasher



SN27ZI00VI

15 place settings | Free Standing | Silver Inox

Key Highlights	<ul style="list-style-type: none">Zeolith[®] Drying TechnologyHome Connect[^] - IOT Enabled remote AccessIntegration with: Google / Alexa voice assistance, IFTTT, Fitbit/Apple/Android smart watches, EtcrackMatic - height adjustable basketiQdriveaquaSensor, loadSensordosageAssistTop showerGlass Care protection System
Design & Innovation	<ul style="list-style-type: none">Touch PanelInbuilt Water softenerSelf-cleaning filter system with 3-fold corrugated filterDownloadable Programme*Remote Diagnostic*Machine Care ProgrammeDetergent AutomationTime delay: 1-24 hoursCutlery Drawer-varioDrawer Pro8x Flip tines in lower basket • 6x Flip tines in upper basket2 cup shelves in top basket
Programmes & Options	<ul style="list-style-type: none">8 programmes: including Intensive Kadhai 70°C6 Wash Option: Shine + Dry, IntensiveZone, Hygiene 80° Air, varioSpeedPlus, Machine Care, Remote Start
Technical Information	<ul style="list-style-type: none">Energy consumption: 0.83 kWhWater consumption: 9.5LNoise level: 46 dBDimensions (HxWxD): 84.5 x 60 x 60 cm



SN25HI00VI

14 place settings | Free Standing | Silver Inox

Key Highlights	<ul style="list-style-type: none">Home Connect[^] - IOT Enabled remote AccessIntegration with: Google / Alexa voice assistance, IFTTT, Fitbit/Apple/Android smart watches, EtcrackMatic - height adjustable basketGlass Care protection SystemiQdriveaquaSensor, loadSensorhalfLoaddosageAssistTop shower
Design & Innovation	<ul style="list-style-type: none">Touch PanelInbuilt Water softenerSelf-cleaning filter system with 3-fold corrugated filterDownloadable Programme*Remote Diagnostic*Detergent AutomationTime delay: 1-24 hoursCutlery Drawer-VarioDrawer4x Flip tines in lower basket2x Flip tines in upper basket2 cup shelves in top basket
Programmes & Options	<ul style="list-style-type: none">7 programmes: including IntensiveKadhai 70°C6 Wash Option: Extra Dry, IntensiveZone, Half Load, HygienePlus, VarioSpeedPlus, Remote Start.
Technical Information	<ul style="list-style-type: none">Energy consumption: 0.92 kWhWater consumption: 9.5LNoise level: 48 dBDimensions (HxWxD): 84.5 x 60 x 60 cm

[^]HomeConnect is currently available in 9 cities (Mumbai, Pune, Bangalore, Hyderabad, Chennai, Jaipur, Kolkata, Ahmedabad, Delhi) and will be available in other cities very soon.

*Remote diagnostic & downloadable programs will be available soon in India as well.

Freestanding Dishwasher



SN25II00TI

13 place settings | Free Standing | Silver Inox

Key Highlights	<ul style="list-style-type: none">Home Connect^ - IOT Enabled remote AccessIntegration with: Google / Alexa voice assistance, IFTTT, Fitbit/Apple/Android smart watches, EtcrackMatic - height adjustable basketGlass Care protection SystemiQdriveaquaSensor, loadSensordosageAssistTop shower
Design & Innovation	<ul style="list-style-type: none">Inbuilt Water softenerSelf-cleaning filter system with 3-fold corrugated filterDownloadable Programme*Remote Diagnostic*Detergent AutomationTime delay: 1-24 hoursCutlery Box - Moveable4x Flip tines in lower basket2x Flip tines in upper basket2 cup shelves in top basket
Programmes & Options	<ul style="list-style-type: none">6 programmes: including Intensive Kadhai 70°C5 Wash Option: Extra Dry, IntensiveZone, Half Load, varioEco, Remote Start
Technical Information	<ul style="list-style-type: none">Energy consumption: 01.35 kWhWater consumption: 11.5LNoise level: 52 dBDimensions (HxWxD): 84.5 x 60 x 60 cm

[^]HomeConnect is currently available in 9 cities (Mumbai, Pune, Bangalore, Hyderabad, Chennai, Jaipur, Kolkata, Ahmedabad, Delhi) and will be available in other cities very soon.

^{*}Remote diagnostic & downloadable programs will be available soon in India as well.



SN25IW00TI

13 place settings | Free Standing | White

Key Highlights	<ul style="list-style-type: none">Home Connect^ - IOT Enabled remote AccessIntegration with: Google / Alexa voice assistance, IFTTT, Fitbit/Apple/Android smart watches, EtcrackmMatic - height adjustable basketGlass Care protection SystemiQdriveaquaSensor, loadSensordosageAssistTop shower
Design & Innovation	<ul style="list-style-type: none">Inbuilt Water softenerSelf-cleaning filter system with 3-fold corrugated filterDownloadable Programme*Remote Diagnostic*Detergent AutomationTime delay: 1-24 hoursCutlery Box - Moveable4x Flip tines in lower basket2x Flip tines in upper basket2 cup shelves in top basket
Programmes & Options	<ul style="list-style-type: none">6 programmes: including Intensive Kadhai 70°C5 Wash Option: Extra Dry, IntensiveZone, Half Load, varioEco, Remote Start
Technical Information	<ul style="list-style-type: none">Energy consumption: 01.35 kWhWater consumption: 11.5LNoise level: 52 dBDimensions (HxWxD): 84.5 x 60 x 60 cm

Freestanding Dishwasher



SN256I01GI

13 place settings | Free Standing | Silver Inox

Key Highlights	<ul style="list-style-type: none">Glass Care protection SystemPre - Activated VarioSpeed DishwasheriQdriveaquaSensor, loadSensorNew Wash Programme - hygienePlusdosageAssistTop shower
Design & Innovation	<ul style="list-style-type: none">Inbuilt Water softenerSelf-cleaning filter system with 3-fold corrugated filterDetergent AutomationTime delay: 1-24 hoursCutlery Box - Moveable4x Flip tines in lower basket2x Flip tines in upper basket2 cup shelves in top basket
Programmes & Options	<ul style="list-style-type: none">6 Wash Programmes: Including intensive Plus 70°C3 Wash Options: varioSpeed, Half load, HygienePlus
Technical Information	<ul style="list-style-type: none">Energy consumption: 1.02 kWhWater consumption: 9.5LNoise level: 52 dBDimensions (HxWxD): 84.5 x 60 x 60 cm

[^]HomeConnect is currently available in 9 cities (Mumbai, Pune, Bangalore, Hyderabad, Chennai, Jaipur, Kolkata, Ahmedabad, Delhi) and will be available in other cities very soon.

^{*}Remote diagnostic & downloadable programs will be available soon in India as well.



SN256W01GI

13 place settings | Free Standing | White

Key Highlights	<ul style="list-style-type: none">Glass Care protection SystemPre - Activated VarioSpeed DishwasheriQdriveaquaSensor, loadSensorNew Wash Programme - HygienePlusdosageAssistTop shower
Design & Innovation	<ul style="list-style-type: none">Inbuilt Water softenerSelf-cleaning filter system with 3-fold corrugated filterDetergent AutomationTime delay: 1-24 hoursCutlery Box - Moveable4x Flip tines in lower basket2x Flip tines in upper basket2 cup shelves in top basket
Programmes & Options	<ul style="list-style-type: none">6 Wash Programmes: Including intensive Plus 70°C3 Wash Options: varioSpeed, Half load, HygienePlus
Technical Information	<ul style="list-style-type: none">Energy consumption: 1.02 kWhWater consumption: 9.5LNoise level: 52 dBDimensions (HxWxD): 84.5 x 60 x 60 cm



Built - in Dishwasher

Built - in Dishwasher



SN97YX01CE

14 place settings | Fully Integrated

Key Highlights	<ul style="list-style-type: none">Zeolith[®] Drying TechnologyHome Connect[^] - IOT Enabled remote AccessIntegration with: Google / Alexa voice assistance, IFTTT, Fitbit/Apple/Android smart watches, EtcopenAssistdryingAssistSpecial Glass ZonevarioHingedosageAssist	
Design & Innovation	<ul style="list-style-type: none">Touch control PanelInbuilt Water softenerSelf-cleaning filter system with 3-fold corrugated filterDownloadable Programme*Remote Diagnostic*rackMatic - height adjustable basketvarioDrawer ProGlass Care protection system	<ul style="list-style-type: none">emotionalLightStatus Light-Gap illuminationDetergent AutomationiQdrive
Programmes & Options	<ul style="list-style-type: none">8 programmes: including Brilliant Shine6 special options: Shine + Dry, IntensiveZone, HygienePlus, varioSpeedPlus, Machine Care, Remote Start	
Technical Information	<ul style="list-style-type: none">Energy consumption: 0.74 kWhWater consumption: 9.5LNoise level: 43 dBDimensions (HxWxD): 81.5 x 59.8 x 55 cm	




SN65HX00VI


14 place settings, Fully Integrated.

Key Highlights	<ul style="list-style-type: none">Home Connect - IOT Enabled Remote AccessIntegration with: Google / Alexa voice assistance, IFTTT, Fitbit/Apple/Andriod smart watches, EtcaquaSensor, loadSensorrackMatic - 3 Stage Height adjustable BasketIqdriveAqua-Sensor, Load-Sensor	
Design & Innovation	<ul style="list-style-type: none">Downloadable ProgrammeRemote Diagnostic*Cutlery Drawer -VarioDrawer4x flip tines alternating in lower basket2x Flip tines in upper basket2 cup shelves in top basketGlass Care protection SystemInbuilt Water softener	<ul style="list-style-type: none">Self-cleaning filter system with 3-fold corrugated filterDosageAssistDetergent AutomationTop showerTime delay: 1-24 hoursAqua Stop
Programmes & Options	<ul style="list-style-type: none">6 programmes: including Intensive 70°C5 special options: Intensive Zone, Halfload, VarioSpeedPlus, Extra Dry, Remote Start	
Technical Information	<ul style="list-style-type: none">Energy consumption: 0.92 kWhWater consumption: 9.5LNoise level: 44 dBDimensions (HxWxD): 81.5 x 59.8 x 55 cm	

[^]HomeConnect is currently available in 9 cities (Mumbai, Pune, Bangalore, Hyderabad, Chennai, Jaipur, Kolkata, Ahmedabad, Delhi) and will be available in other cities very soon.
*Remote diagonistic & downloadable programs will be available soon in India as well.

Built - in Dishwasher

	SN57ZS00VI 15 place settings Semi-integrated
Key Highlights	<ul style="list-style-type: none">• Zeolith* Drying Technology• Home Connect^ - IOT Enabled remote Access• Integration with: Google / Alexa voice assistance, IFTTT, Fitbit/Apple/Android smart watches, Etc• rackMatic - height adjustable basket• iQdrive• aquaSensor, loadSensor• dosageAssist
Design & Innovation	<ul style="list-style-type: none">• Touch control Panel• Inbuilt Water softener• Downloadable Programme*• Remote Diagnostic*• VarioDrawer Pro• Glass Care protection System• emotionalLight• Detergent Automation• iQdrive
Programmes & Options	<ul style="list-style-type: none">• 8 programmes: including Mixed Load• 6 special options: Hygiene 80° Air, Shine + Dry, IntensiveZone, varioSpeedPlus, Machine Care, Remote Start
Technical Information	<ul style="list-style-type: none">• Energy consumption: 0.83 kWh• Water consumption: 9.5L• Noise level: 46 dB• Dimensions (HxWxD): 81.5 x 59.8 x 57.3 cm

	SN55HS00VI 14 place settings Semi-integrated
Key Highlights	<ul style="list-style-type: none">• Home Connect^ - IOT Enabled remote Access• Integration with: Google / Alexa voice assistance, IFTTT, Fitbit/Apple/Android smart watches, Etc• rackMatic- height adjustable basket• iQdrive• aquaSensor, loadSensor• dosageAssist
Design & Innovation	<ul style="list-style-type: none">• Inbuilt Water softener• Self-cleaning filter system with 3-fold corrugated filter• Downloadable Programme*• Remote Diagnostic*• varioDrawer• Glass Care protection System• Detergent Automation• Top shower
Programmes & Options	<ul style="list-style-type: none">• 6 programmes: including Intensive 70°C• 5 special options: intensiveZone, Halfload, varioSpeedPlus, Extra Dry, Remote Start
Technical Information	<ul style="list-style-type: none">• Energy consumption: 0.92 kWh• Water consumption: 9.5L• Noise level: 48 dB• Dimensions (HxWxD): 81.5 x 59.8 x 57.3 cm

^HomeConnect is currently available in 9 cities (Mumbai, Pune, Bangalore, Hyderabad, Chennai, Jaipur, Kolkata, Ahmedabad, Delhi) and will be available in other cities very soon.

*Remote diagnostic & downloadable programs will be available soon in India as well.



The Finish products are easily available in all leading retail stores & online portals.

The Tablet contains a mixture of Detergent, Dishwashing Salt and Rinse Aid. One tablet is ideal for one wash cycle.



Contact Siemens

Your local Siemens dealer will be pleased to provide more detailed information and advice you on your choice of appliance. However, if you have questions or comments about any of our appliances, we would be pleased to hear from you.



Every Siemens appliance is carefully created to the exacting standard that our customers deserve. There is no compromise, no cutting corners, owning a Siemens appliance brings confidence and style to your home life. We draw on many years of manufacturing experience and feedback with customers to design machines that meet your everyday needs. Extensive research and testing of every component gives you a level of confidence that will last for many years.



Customer Care

Siemens has been the pioneer of in-house customer care service. This is because once you own a Siemens appliance, you'll own it for a lifetime. Our in-house customer service is geared up to solve all your problem send queries.



www.siemens-home.bsh-group.in/



1800-209-1850 (Customer Care)
Monday-Saturday - 8:00 am to 8:00 pm

BSH Household Appliances Manufacturing Pvt. Ltd.
Arena House, II Floor, Main Building,
Plot No.103, Road No.12, MIDC,
Andheri, Mumbai 400093. INDIA.

Siemens toll free number - 1800 209 1850
(Monday to Saturday: 8am to 8pm)

www.siemens-home.bsh-group.in

BSH Group is a Trademark Licensee of Siemens AG.
Valid from March, 2022.

Important Notes:

Certain appliances shown in this catalogue may not be available in India. Model numbers and specifications are for reference only and subject to change without prior notice. Please contact your local Siemens retailer for the latest information.

BSH Household Appliances Manufacturing Pvt. Ltd. reserves the right to change specifications without notice, in the interest of technological progress. While every effort has been made to ensure that all specifications and descriptions are correct at the time of going to press this brochure should not be regarded as infallible guide nor as an offer of sale for a particular product. Due to variables in the reproduction process, colours of actual products may vary slightly from those depicted. We recommend a visit to a Siemens dealer to confirm that specifications and colours are to your satisfaction.

All descriptions and installation diagrams are intended as a guide only. For additional technical information, full dimensional and installation details, please refer to the instruction manual supplied with the appliance.

All rights reserved. No part of this publication may be reproduced in any form by any means without the prior written permission of BSH Household Appliances Manufacturing Pvt. Ltd. (EOE)