

iQ700 oven series

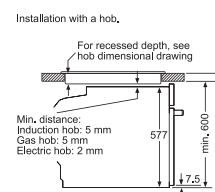
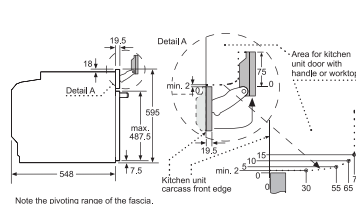
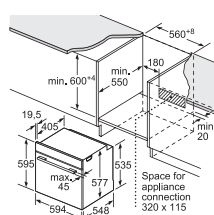
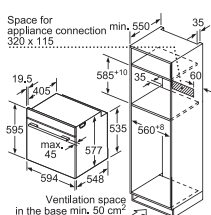


Scan code to find out more

varioSpeed oven with pulseSteam  
HN678G4S6

|   |  |   |
|---|--|---|
| <b>Design</b>                           | <ul style="list-style-type: none"> <li>• 5.7" TFT colour and graphic display</li> <li>• Touch control with rotary knob</li> <li>• softMove door</li> <li>• Quadruple glass cool touch door (30°C door temperature)^</li> </ul>   | <ul style="list-style-type: none"> <li>• Integral cooling fan</li> <li>• 5 shelf levels with 1 level telescopic rail</li> <li>• Enamel oven interior</li> <li>• LED elongated light</li> <li>• Integrated grill element</li> </ul>  |
| <b>Features</b>                         | <ul style="list-style-type: none"> <li>• activeClean® function and program</li> <li>• activeClean® solid rails and trays</li> <li>• bakingSensor</li> <li>• roastingSensor Plus</li> <li>• Drying function</li> <li>• Rapid heat function</li> <li>• Residual heat indicator</li> </ul>  | <ul style="list-style-type: none"> <li>• Sabbath setting</li> <li>• Automatic temperature proposal with actual temperature display</li> <li>• Descaling function</li> <li>• Door contact switch</li> <li>• cookControl Plus</li> </ul>  |
| <b>Programmes / Additional Features</b> | <ul style="list-style-type: none"> <li>• 15 hot air and grill cooking methods                             <ul style="list-style-type: none"> <li>- 4D hot air</li> <li>- Hot air eco</li> <li>- Conventional heat</li> <li>- Conventional heat eco</li> <li>- Pizza setting (intensive hot air)</li> <li>- Intensive heat</li> <li>- Bottom heat</li> <li>- Drying</li> <li>- coolStart</li> <li>- Hot air grilling</li> </ul> </li> </ul> | <ul style="list-style-type: none"> <li>- Full width grill</li> <li>- Half width grill</li> <li>- Keep warm</li> <li>- Plate warming</li> <li>- Slow cook</li> <li>• Combination microwave and oven function</li> <li>• pulseSteam function                             <ul style="list-style-type: none"> <li>- Reheat</li> <li>- Dough proving</li> </ul> </li> <li>• Digital electronic clock with on/off and alarm function</li> </ul> |
| <b>Technical Information</b>            | <ul style="list-style-type: none"> <li>• Capacity: 67L</li> <li>• Water tank capacity: 1L</li> <li>• Grill output: 2.8kW (max.)</li> <li>• Microwave output: 800W (max.)</li> </ul>  | <ul style="list-style-type: none"> <li>• Heating temperature: 30°C to 300°C</li> <li>• Total connected load: 3.6kW (20A single phase connection)</li> </ul>   |
| <b>Appliance Dimensions (H x W x D)</b> | 595 x 594 x 548mm  |   |
| <b>Cavity Dimensions (H x W x D)</b>    | 357 x 480 x 392mm  |   |
| <b>Supplied Accessories</b>             | <ul style="list-style-type: none"> <li>• 1 combination grid</li> <li>• 1 universal pan</li> </ul>  | <ul style="list-style-type: none"> <li>• 1 enamel baking tray</li> </ul>  |
| <b>Country of Origin</b>                | Germany  |   |
| <b>Expert Services</b>                  | <ul style="list-style-type: none"> <li>• Product consultation with unlimited product hotline inquiry</li> <li>• Kitchen planning consultation with pre-installation site measurement</li> <li>• Professional installation</li> </ul>   |   |
| <b>Recommended Retail Price</b>         | HK\$46,800   |   |

^ Measured at the middle of the window at 180°C oven temperature, after 1 hour on top and bottom heat.



If the appliance will be installed underneath a hob, the following worktop thicknesses (including substructure if necessary) must be taken into account

| Hob type                   | min. worktop thickness |
|----------------------------|------------------------|
|                            | flush                  |
| Induction hob              | 37 mm / 38 mm          |
| Full surface Induction hob | 47 mm / 48 mm          |
| Gas hob                    | 30 mm / 38 mm          |
| Electric hob               | 27 mm / 30 mm          |

Measurements in mm