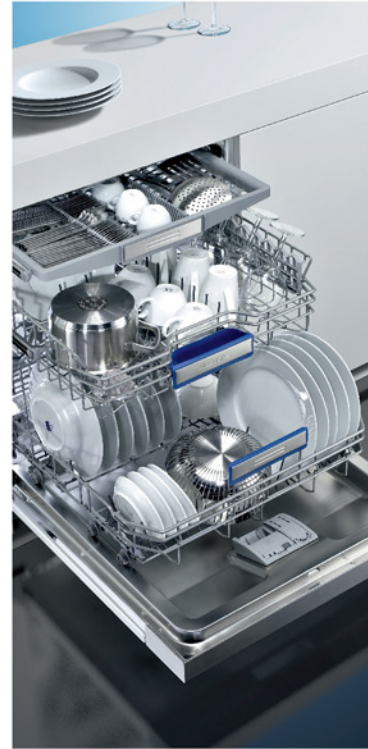
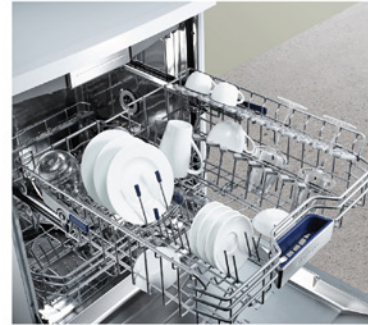


More flexibility for loading your dish

Dishwashing is hassle-free even at a party or on special occasions



Full loading



Upper basket:
Suitable for small tableware, such as cups, bowls and small dishes



Bottom basket:
Suitable for bulky items, such as pots, large plates and glasses



varioFlex Plus basket system:
Suitable wide-handled knives, soup ladles and small coffee cups

For dishwasher

Suitable



NOT Suitable

- Wooden cutlery
- Exquisite glass decorations and crafts, and antique tableware
- Non heat-resistant plastic parts
- Copper and tin utensils
- Dip / contains cutlery ash, wax, lubricants or ink
- Aluminum and silver metals
- The surface of certain types of glass (e.g. quartz glass) may become cloudy due to the erosion after several washing cycles.

Special detergent for a perfect cleaning result

Special detergent will dissolve instantly to soak and soften the dried food residues and sauces. Tough stuck on food is then broken down. Finally, all residues are washed away and a brilliant shine is left on all your dishes.

Types of detergent for dishwasher in the market: tablet, powder and liquid form. By considering different needs of users, rinse aid is also available in the market, resulting in perfect drying performance.



Model numbers and specifications are for reference only and subject to change without prior notice. Right of technical modification reserved, delivery subject to availability, colors of actual products may vary from illustrations. ®Registered trademark.

©2015 BSH Home Appliances Limited. All rights reserved. All contents and information contained in this catalogue are proprietary to BSH Home Appliances Limited and are subject to copyright protection. Reproduction, republication, redistribution or unauthorised use of any content or information contained in this catalogue is expressly prohibited without the prior written consent of BSH Home Appliances Limited. Printing in Hong Kong 03. 2015

BSH Home Appliances Limited
BSH Home Appliances Group is a Trademark Licensee of Siemens AG

Siemens Showroom
5/F, Club Lusitano, 16 Ice House Street, Central, Hong Kong (Side entrance on Duddell Street)

Product Hotline: 2625 5577 (Hong Kong) /
0800 030 (Macau local call only)

Fax: 2565 6681
E-mail: siemens.hk.showroom@bshg.com

www.siemens-home.com.hk

SIEMENS

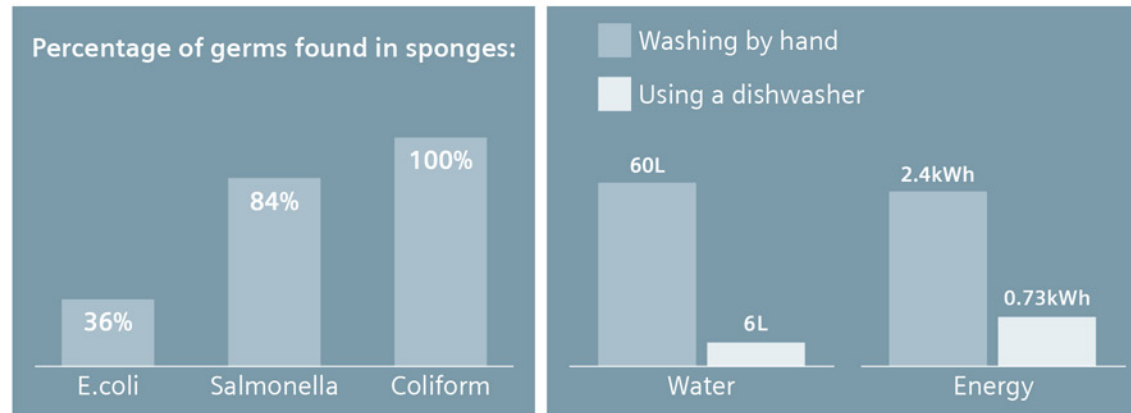


Dishwasher User Tips

siemens-home.com.hk

Siemens. The future moving in.

Dishwashing beats manual cleaning



Hygiene comes first

A Kitchen Hygiene Study was conducted in Singapore¹ in 2011, in which one of the studies aims to help identify where germs usually accumulate in the kitchen. The result shows that sponges contain the most germs.

- 100% had presence of a coliform type bacteria
- 84% tested had traces of Salmonella sp.
- 36% had found E.coli

The study shows the sponge is not a desirable washing tool. Moreover, manual dishwashing is less effective than using a dishwasher, in which the temperature can rise up to 70°C, and the detergent is designed to remove food residues.

¹ BRASS (2011). Finish/Bosch Kitchen Hygiene Study in Singapore



Save water to save energy

Our dishwashers use as little as 6 litres of water per wash! On average, that's an incredible 90% litres of water less per load than washing up by hand. At the same time, saving thrice of the energy by using dishwasher, comparing to washing up by hand.²

² The energy required to heat 60 litres of water (washing up by hand) from 15°C to 55°C is around 2.4kWh while the energy used by an SN278103TE dishwasher is 0.73kWh for an Eco 50°C wash programme.



More time for better living

Free up to over 273 hours³, which equals to 11 days of extra time for yourself and your family. Let a Siemens' dishwasher to replace your handwashing routine, which statistically take an average of 60 minutes for a family of four each time.

³ Loading dishes requires 15 minutes generally.

New technologies and special features

Zeolite® Drying

Siemens' Zeolite® dishwasher makes innovative use of zeolite, a naturally occurring mineral, which has the ability to absorb moisture and convert it into energy, resulting in better drying performance and less electricity consumption. It also helps to dry your dishes more quickly, making extra time for your pleasure.

(Applicable models: SN56V597EU, SN66V092EU, SN26V896EU, SN278103TE)



HygienePlus functions

The hygienePlus function is ideal for cleaning containers and utensils that must be sanitary, such as baby bottles and cutting boards. During the rinse cycle, a high temperature of approximately 70°C is maintained, killing many of the bacteria and germs.

(Applicable models: SN56V597EU, SN56N596EU, SN66V092EU, SR66T092EU, SC76M540EU, SK76M540EU, SN26V896EU, SN278103TE, SR26T890EU, SN26L230EA)



aquaSensor

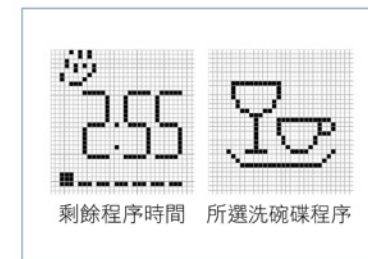
aquaSensor makes use of a light sensor to measure the turbidity of the rinsing water. Water that is qualified to be re-used will be transferred to the next rinse cycle, hence water consumption can be reduced.



timeLight

Our dishwashers are so quiet. It's sometimes difficult to know when the cycle has finished, or what stage it is at. That's why we developed the stylish, innovative timeLight which projects the time remaining and cycle status onto your kitchen floor.

(Applicable models: SN66V092EU, SR66T092EU)



aquaStop

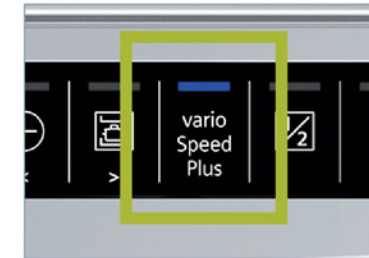
Immediately when the dishwasher senses a leak, it stops the water flow, and activates drainage of ponding to prevent harm to other furniture and appliances.



Shortens the dishwashing cycle**: varioSpeed Plus.

Optimally wash and dry a large load of dishes within the shortest possible time - thanks to varioSpeed Plus. Just press a button and the washing time will be reduced by up to 66%***. This makes varioSpeed Plus ideal for family celebrations and parties. varioSpeed in other models also shortens your dishwashing cycle by up to 50%**.

**Does not apply to the Pre-rinse or QuickWash cycle.

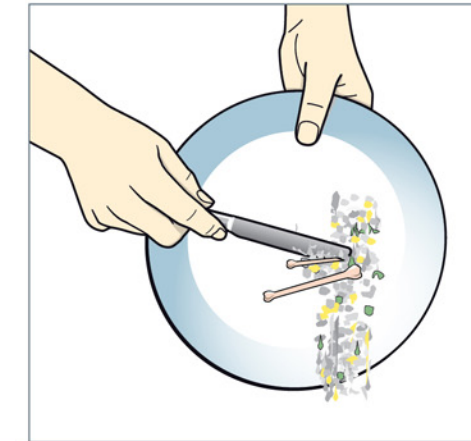


10-year warranty against rusting-through of the inner tub

There is one thing you can find in your Siemens Home Appliances: long-lasting quality. The inner tubs of all Siemens dishwashers combine high quality stainless steel sheets, innovative technologies, and special surface treatment.



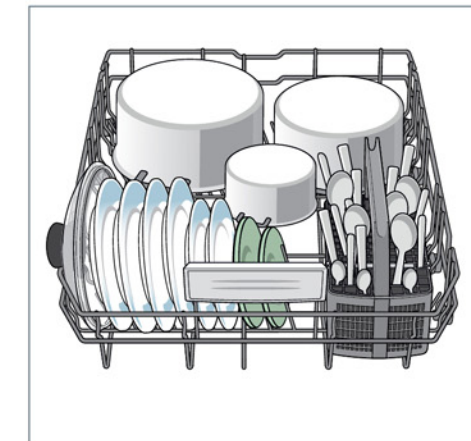
User Tips for the Utmost Care



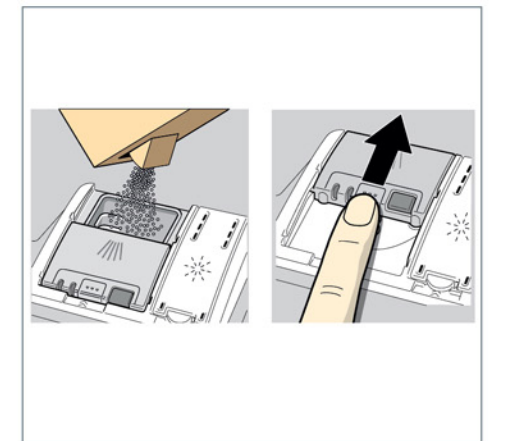
1 Scrap leftovers (rinsing utensils is not required)



2 Load upper basket (face down to avoid puddles)



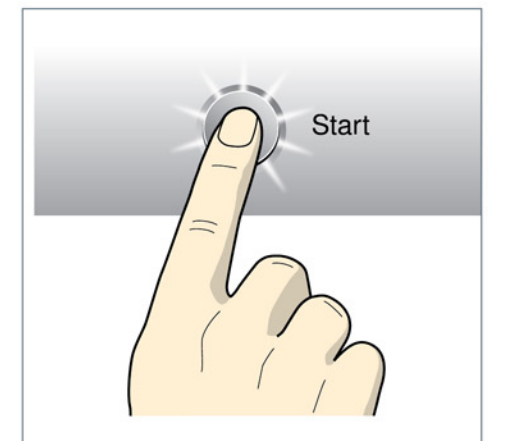
3 Load lower basket (face down to avoid puddles, with sharp cutleries facing down)



4 Load detergent and close door



5 Rinse aid is added before starting the dishwasher



6 Choose a wash programme and press "start" to wash.