

# Your new dryer

**Congratulations** - You have chosen a modern, high-quality Siemens domestic appliance. The condensation dryer is distinguished by its economical energy consumption. Every dryer which leaves our factory is carefully checked to ensure that it functions correctly and is in perfect condition. Should you have any questions, our after-sales service will be pleased to help.

**Environmentally responsible disposal**  
Dispose of packaging in an environmentally-responsible manner. This appliance is certified in accordance with the guidelines on E-waste (Management) Rules 2016 which govern waste electrical and electronic equipment. The guidelines provide a framework for the return and recycling of used appliances.

**Do's:**  
- Hand over the old/discarded electronic equipment only to authorized collection centers for disposal  
<http://www.siemens-home.com/in/Preserve.html>

See also:  
Contact No: 180042535287 (toll-free)  
E-mail: recycle@ewasteindia.com  
Online website: www.ewasteindia.com

- Consult the authorized service center as to whether the Electronic Equipment can be repaired or not, before discarding  
- Consult the retailer about appliance take back schemes

**Don'ts**  
- Don't dump the discarded Electronic Equipment in the open or in any land fill site, as this will result in contamination of the soil and the ground water  
- Don't dispose of the discarded Electronic Equipment in household bins or Municipal bins  
- The product is not meant for re-sale to any unauthorized agencies/scrap dealers  
Don't keep any replaced spare part(s) from the product in an exposed area  
For further information about our products, accessories, spare parts and services, please visit: [www.siemens-home.bsh-group.com](http://www.siemens-home.bsh-group.com)

## Contents

	Page
Preparation	2
Setting the programmes	2
Drying	3/4
Information on laundry	5
Fine adjustment of the drying result	5/6
Care and cleaning	6
Programme overview	7
Installation	8
Frost protection / Transport	8
Technical data	9
Optional accessories	9
What to do if... / After-sales service	10
Safety instructions	11

## Intended use

- for domestic use only,
- only to be used for drying fabrics that have been washed with water.

**Keep children younger than 3 years old away from the dryer.**  
Do not let children make the cleaning and maintenance work on the dryer without supervision. Do not leave children unsupervised near the dryer. Keep pets away from the dryer.

The dryer can be operated by children 8 years old and older, by persons with reduced physical, sensory or mental abilities and by persons with insufficient experience or knowledge if they are supervised or have been instructed in its use by a responsible adult.  
This appliance is intended for use up to a maximum height of 4000 metres above sea level.

## Preparing for installation, see Page 8

**Never start the dryer if it is damaged!**  
Inform your after-sales service.

**Make sure your hands are dry.**  
Hold the plug only.

## Sorting and loading laundry

Remove all items from pockets.  
Check for cigarette lighters.  
The drum must be empty prior to loading.  
See programme overview on page 7.  
See also separate instructions for "Woolens basket" (depending on model)

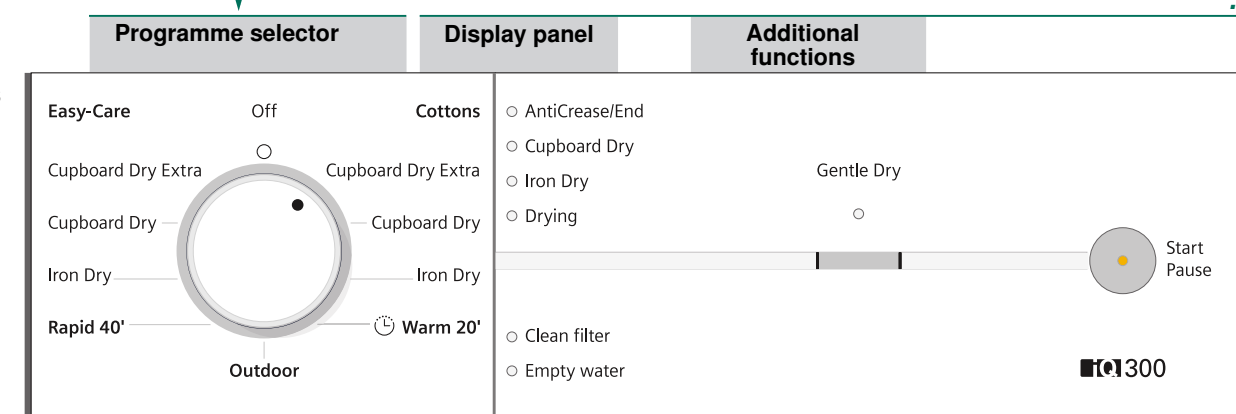
## Inspecting the dryer

## Connecting the mains plug

## Selecting and adjusting the programme

Select the drying programme ...

... and adapt to individual requirements



All buttons are sensitive and only need to be touched lightly.

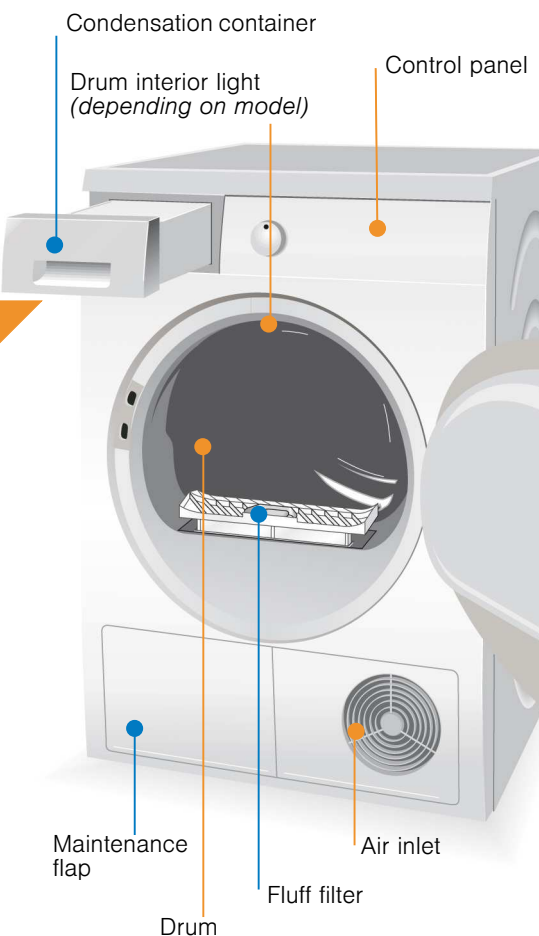
**Press the Start/Pause button**

Only operate the dryer with the fluff filter inserted!

1

2

## Drying



## Drying

## Emptying condensation

- Empty container **after** each drying operation!
- Pull out condensation container keeping it horizontal.
  - Pour out condensation.
  - Always push container in fully until it clicks into place.
- If **Empty water** flashes in the display panel → *What to do if...*, Page 10.

## Cleaning the fluff filter

- Clean the fluff filter **after** each drying operation.
- Open the door, remove fluff from door/door area.
  - Pull out and fold open the fluff filter.
  - Remove the fluff (by wiping the filter with your hand). If the fluff filter is very dirty or blocked, rinse with warm water and dry thoroughly.
  - Close and reinsert the fluff filter.

## Switching off the dryer

Turn the programme selector to **Off**.  
Do not leave laundry in the dryer.

## Removing the laundry

The automatic anti-crease function causes the drum to move at specific intervals, the washing remains loose and fluffy for an hour (two hours if the additional **Iron Dry** function is also selected-*depending on model*).

## Programme end

once lights up in the display.  
**Interrupt programme** removing or adding laundry.

The drying cycle can be interrupted for a brief period so that laundry may be added or removed. The programme selected must then be resumed and completed.

**Never switch the dryer off before the drying process has ended.**  
Drum and door may be hot!

- Open door, the drying process is interrupted.
- Load or remove laundry and close door.
- If required, select a new programme and additional functions.
- Press the **Start/Pause** button.

3

## Information on laundry ...

### Labelling of fabrics

- Follow the manufacturer's care information.
- Drying at normal temperature.
  - Drying at low temperature → also select **Gentle Dry**.
  - Do not machine dry.

Observe safety instructions without fail → Page 11!  
Do not tumble-dry the following fabrics for example:  
- Impermeable fabrics (e.g. rubber-coated fabrics).  
- Delicate materials (silk or curtains made from synthetic material) → they may crease  
- Laundry contaminated with oil.

### Drying tips

- To ensure a consistent result, sort the laundry by fabric type and drying programme.
- Always dry very small items (e.g. baby socks) together with large items of laundry (e.g. hand towel).
- Close zips, hooks and eyelets, and button up covers. Tie fabric belts, apron strings, etc. together
- Do not over-dry easy-care laundry → risk of creasing! Allow laundry to finish drying in the air.
- Do not dry woolens in the dryer, only use to freshen them up → Page 7, **Woolens Finish Programme** (depending on model).
- Do not iron laundry immediately after drying, fold items up and leave for a while → the remaining moisture will then be distributed evenly.
- The drying result depends on the type of water used during washing. → Fine adjustment of the drying result → Page 5/6.
- Machine-knitted fabrics (e.g. T-shirts or jerseys) often shrink the first time they are dried → do not use the **Cupboard Dry Extra** programme.
- Starched laundry is not always suitable for dryers → starch leaves behind a coating that adversely affects the drying operation.
- Use the correct dosage of fabric softener as per the manufacturer's instructions when washing the laundry to be dried.
- Use the timer programme for small loads → this improves the drying result.

### Environmental protection / Energy-saving tips

- Before drying, spin the laundry thoroughly in the washing machine → the higher the spin speed the shorter the drying time will be (consumes less energy), also spin easy-care laundry.
- Put in, but do not exceed, the maximum recommended quantity of laundry → programme overview → Page 7.
- Make sure the room is well ventilated during drying.
- Do not obstruct or seal up the air inlet.
- Keep the air cooler clean → Page 6 "Care and cleaning".

## Fine adjustment of the drying result

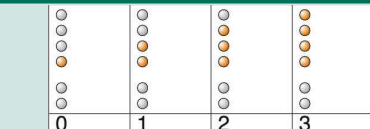
### Adjustment of the levels of dryness



4

## Fine adjustment of the drying result

Drying, Iron Dry, Cupboard Dry, AntiCrease/End are displayed in sequence. Short signal when changing from level 3 to 0, otherwise long signal.



## Care and cleaning

Only when switched off!

### Dryer housing, control panel, air cooler, moisture sensors

- Wipe with a soft, damp cloth.
- Do not use harsh cleaning agents and solvents.
- Remove detergent and cleaning agent residue immediately.
- During drying, water may collect between the door and seal. This does not affect your dryer's functions in any way.

### Air cooler / Protective filter

- When cleaning, only remove the protective filter. Clean the air cooler behind the protective filter once a year.
- Allow the dryer to cool.
- Residual water may leak out, so place an absorbent towel underneath the maintenance door.

- Unlock the maintenance door.
- Open the maintenance door fully.

- Turn both locking levers towards each another.
- Pull out the protective filter/air cooler.

Do not damage the protective filter or air cooler. Clean with warm water only. Do not use any hard or sharp-edged objects.

- Clean the protective filter/air cooler thoroughly, Allow to drip dry.
- Clean the seals.
- Re-insert the protective filter/air cooler, with the handle facing down.
- Turn back both locking levers.
- Close the maintenance door until the lock clicks into place.

### Moisture sensors

The dryer is fitted with stainless steel moisture sensors. The sensors measure the level of moisture in the laundry. After a long period of operation, a fine layer of limescale may form on the sensors.

- Open the door and clean the moisture sensors with a damp sponge which has a rough surface.

Do not use steel wool or abrasive materials.

5

6



# Your new dryer

**Congratulations** - You have chosen a modern, high-quality Siemens domestic appliance. The condensation dryer is distinguished by its economical energy consumption. Every dryer which leaves our factory is carefully checked to ensure that it functions correctly and is in perfect condition. Should you have any questions, our after-sales service will be pleased to help.

## Environmentally responsible disposal

Dispose of packaging in an environmentally-responsible manner. This appliance is certified in accordance with the guidelines on E-waste (Management) Rules 2016 which govern waste electrical and electronic equipment. The guidelines provide a framework for the return and recycling of used appliances.



- Do's:**
- Hand over the old/discarded electronic equipment only to authorized collection centers for disposal  
<http://www.siemens-home.com/in/Preserve.html>

See also:  
Contact No: 180042535287 (toll-free)  
E-mail: [recycle@ewasteindia.com](mailto:recycle@ewasteindia.com)  
Online website: [www.ewasteindia.com](http://www.ewasteindia.com)

- Consult the authorized service center as to whether the Electronic Equipment can be repaired or not, before discarding
- Consult the retailer about appliance take back schemes

- Don'ts**
- Don't dump the discarded Electronic Equipment in the open or in any land fill site, as this will result in contamination of the soil and the ground water
  - Don't dispose of the discarded Electronic Equipment in household bins or Municipal bins
  - The product is not meant for re-sale to any unauthorized agencies/scrap dealers
- Don't keep any replaced spare part(s) from the product in an exposed area. For further information about our products, accessories, spare parts and services, please visit: [www.siemens-home.bsh-group.com](http://www.siemens-home.bsh-group.com)

## Contents

	Page
Preparation	2
Setting the programmes	2
Drying	3/4
Information on laundry	5
Fine adjustment of the drying result	5/6
Care and cleaning	6
Programme overview	7
Installation	8
Frost protection / Transport	8
Technical data	9
Optional accessories	9
What to do if... / After-sales service	10
Safety instructions	11

## Intended use

- for domestic use only,
  - only to be used for drying fabrics that have been washed with water.
- !** *Keep children younger than 3 years old away from the dryer.*  
*Do not let children make the cleaning and maintenance work on the dryer without supervision.*  
*Do not leave children unsupervised near the dryer.*  
*Keep pets away from the dryer.*  
*The dryer can be operated by children 8 years old and older, by persons with reduced physical, sensory or mental abilities and by persons with insufficient experience or knowledge if they are supervised or have been instructed in its use by a responsible adult.*  
*This appliance is intended for use up to a maximum height of 4000 metres above sea level.*

## Preparing for installation, see Page 8



**Never start the dryer if it is damaged!**  
Inform your after-sales service.



**Make sure your hands are dry.**  
Hold the plug only.



**Sorting and loading**

Remove all items from pockets.  
Check for cigarette lighters.  
The drum must be empty prior to loading.  
See programme overview on page 7.  
See also separate instructions for "Woollens" (depending on model)

## Selecting and adjusting the programme

Select the programme

... and adapt to individual requirements

Programme selector	Display panel	Additional functions
<p>Easy-Care      Off      Cottons</p> <p>Cupboard Dry Extra      Cupboard Dry Extra</p> <p>Cupboard Dry      Cupboard Dry</p> <p>Iron Dry      Iron Dry</p> <p>Rapid 40'      Warm 20'</p> <p>Outdoor</p>	<p>○ AntiCrease/End</p> <p>○ Cupboard Dry</p> <p>○ Iron Dry</p> <p>○ Drying</p> <p>Gentle Dry</p> <p>○ Clean filter</p> <p>○ Empty water</p>	<p>Start</p> <p>Pause</p> <p><b>300</b></p>



All buttons are... need to be tou...

Press the



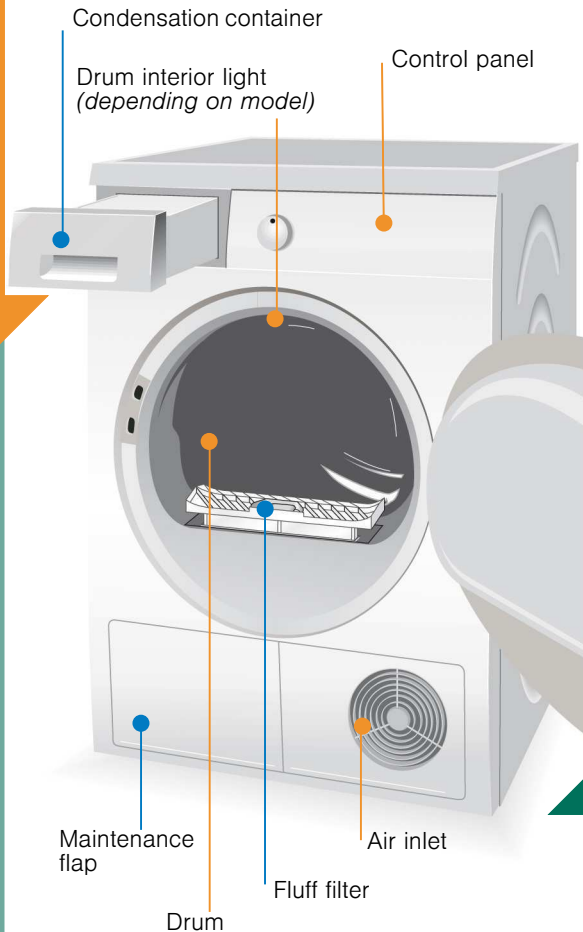
Only operate the fluff filter i...

**Clean filter Empty water** Clean the fluff filter and/or air cooler under running water → Page 4/6  
Empty the condensation container.

**Fine adjustment of the drying result** The drying result (e.g. Cupboard Dry) can be adjusted over three levels (1 - max. 3) for the **Cottons**, **Easy-Care** and **Rapid 40'** programmes → presetting = 0. After one of these programmes has been finely adjusted, the setting is retained for the others. Further information → Page 5/6.

**Gentle Dry** Reduced temperature for delicate fabrics that require a longer drying time; e.g. for polyacrylics, polyamide, elastane or acetate.

# Drying

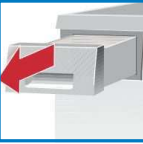


## Emptying condensation

Empty container **after** each drying operation!

1. Pull out condensation container keeping it horizontal.
2. Pour out condensation.
3. Always push container in fully until it clicks into place.

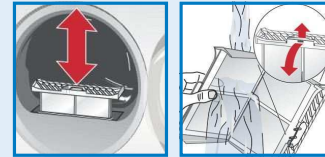
If **Empty water** flashes in the display panel → *What to do if...*, Page 10.



## Cleaning the fluff filter

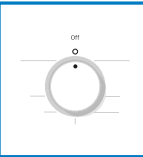
Clean the fluff filter **after** each drying operation.

1. Open the door, remove fluff from door/door area.
2. Pull out and fold open the fluff filter.
3. Remove the fluff (by wiping the filter with your hand).  
If the fluff filter is very dirty or blocked, rinse with warm water and dry thoroughly.
4. Close and reinsert the fluff filter.



## Switching off the dryer

Turn the programme selector to **Off**.  
Do not leave laundry in the dryer.



## Removing the laundry

The automatic anti-crease function causes the drum to move at specific intervals, the washing remains loose and fluffy for an hour (two hours if the additional **Iron Dry** function is also selected-*depending on model*).



**Programme end** once lights up in the display.



**Interrupt programme** removing or adding laundry.



The drying cycle can be interrupted for a brief period so that laundry may be added or removed. The programme selected must then be resumed and completed.



**Never switch the dryer off before the drying process has ended.**  
*Drum and door may be hot!*

1. Open door, the drying process is interrupted.
2. Load or remove laundry and close door.
3. If required, select a new programme and additional functions.
4. Press the **Start/Pause** button.



1  
2

3

# Drying

# Information on laundry ...



## Labelling of fabrics

Follow the manufacturer's care information.

- ☐ Drying at normal temperature.
- ☐ Drying at low temperature → also select **Gentle Dry**.
- ☒ Do not machine dry.



Observe safety instructions without fail → *Page 11!*

Do not tumble-dry the following fabrics for example:

- Impermeable fabrics (e.g. rubber-coated fabrics).
- Delicate materials (silk or curtains made from synthetic material) → they may crease
- Laundry contaminated with oil.



## Drying tips

- To ensure a consistent result, sort the laundry by fabric type and drying programme.
- Always dry very small items (e.g. baby socks) together with large items of laundry (e.g. hand towel).
- Close zips, hooks and eyelets, and button up covers. Tie fabric belts, apron strings, etc. together
- Do not over-dry easy-care laundry → risk of creasing! Allow laundry to finish drying in the air.
- Do not dry woollens in the dryer, only use to freshen them up → *Page 7, Woollens Finish Programme (depending on model).*
- Do not iron laundry immediately after drying, fold items up and leave for a while → the remaining moisture will then be distributed evenly.
- The drying result depends on the type of water used during washing. → Fine adjustment of the drying result → *Page 5/6.*
- Machine-knitted fabrics (e.g. T-shirts or jerseys) often shrink the first time they are dried → do not use the **Cupboard Dry Extra** programme.
- Starched laundry is not always suitable for dryers → starch leaves behind a coating that adversely affects the drying operation.
- Use the correct dosage of fabric softener as per the manufacturer's instructions when washing the laundry to be dried.
- Use the timer programme for small loads → this improves the drying result.

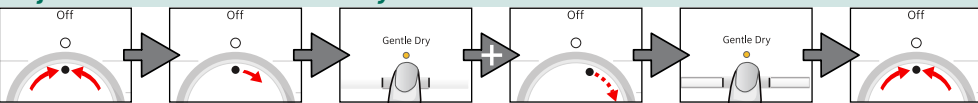
## Environmental protection / Energy-saving tips

- Before drying, spin the laundry thoroughly in the washing machine → the higher the spin speed the shorter the drying time will be (consumes less energy), also spin easy-care laundry.
- Put in, but do not exceed, the maximum recommended quantity of laundry → programme overview → *Page 7.*
- Make sure the room is well ventilated during drying.
- Do not obstruct or seal up the air inlet.
- Keep the air cooler clean → *Page 6 "Care and cleaning"*.

# Fine adjustment of the drying result



## Adjustment of the levels of dryness



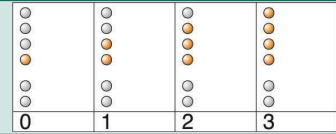
- Turn to **Off**     1 x to the right     Press and hold **Gentle Dry** and turn 5 x to the right     Press **Gentle Dry** until the required level is reached     Turn to **Off**

5

# Fine adjustment of the drying result



Drying, Iron Dry, Cupboard Dry, AntiCrease/End are displayed in sequence. Short signal when changing from level 3 to 0, otherwise long signal.



## Care and cleaning



*Only when switched off!*

### Dryer housing, control panel, air cooler, moisture sensors

- Wipe with a soft, damp cloth.
- Do not use harsh cleaning agents and solvents.
- Remove detergent and cleaning agent residue immediately.
- During drying, water may collect between the door and seal. This does not affect your dryer's functions in any way.

*Clean the protective filter 5 - 6 times a year or if **Clean filter** flashes after cleaning the fluff filter.*

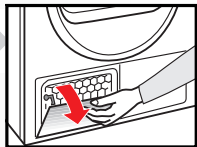
### Air cooler / Protective filter

*When cleaning, only remove the protective filter. Clean the air cooler behind the protective filter once a year.*

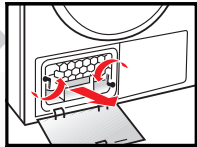
- Allow the dryer to cool.
- Residual water may leak out, so place an absorbent towel underneath the maintenance door.

- Clean filter
- Empty water

- Unlock the maintenance door.
- Open the maintenance door fully.

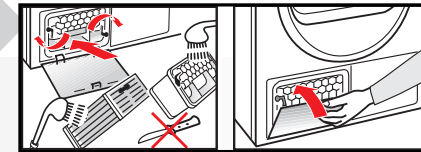


- Turn both locking levers towards each other.
- Pull out the protective filter/air cooler.



*Do not damage the protective filter or air cooler. Clean with warm water only. Do not use any hard or sharp-edged objects.*

- Clean the protective filter/air cooler thoroughly, Allow to drip dry.
- Clean the seals.
- Re-insert the protective filter/air cooler, with the handle facing down.
- Turn back both locking levers.
- Close the maintenance door until the lock clicks into place.



### Moisture sensors

The dryer is fitted with stainless steel moisture sensors. The sensors measure the level of moisture in the laundry. After a long period of operation, a fine layer of limescale may form on the sensors.

- Open the door and clean the moisture sensors with a damp sponge which has a rough surface.



*Do not use steel wool or abrasive materials.*

6

# Programme overview

also see Page 5

Sort the laundry according to type of textile and fabric. Fabrics must be suitable for tumble drying.

After drying...	iron laundry	lightly iron laundry	do not iron laundry	mangle laundry
<b>PROGRAMMES</b>				
<b>TEXTILE TYPE AND INFORMATION</b>				
<b>** Cottons</b>	max. 7 kg	Hard-wearing fabrics, boil-resistant fabrics made of cotton or linen.		
<b>** Easy-Care</b>	max. 3.5 kg	Non-iron laundry made of synthetic fibres and blended fabric, easy-care cotton.		
Iron Dry		Fabrics suitable for ironing (iron fabrics in order to avoid creasing).		
Cupboard Dry		Single-layer fabrics.		
*Cupboard Dry Extra		Fabrics made of thick, multilayered items of clothing.		
All types of fabric; time programme.				
<b>Warm 20'</b>	max. 3 kg	Suitable for pre-dried or slightly damp laundry and for drying off multi-layered, thick laundry. Only dry wool, sports shoes and soft toys with the basket for woollens → <i>Optional Accessories, page 9</i> . In the time programme, the laundry's residual moisture is not automatically detected. If the laundry is still too damp after the drying programme, repeat the programme.		
<b>Outdoor</b>	max. 1.5 kg	Fabrics with membrane coating, water-repellent fabrics; functional clothing, fleece fabrics (dry jackets/trousers with removable internal lining separately)		
<b>Rapid 40'</b>	max. 2 kg	Laundry made of synthetic fibres, cotton or blended fabrics (for example) that needs to be dried quickly. The values may differ from the those specified depending on the type of fabric, mixture of laundry to be dried, residual moisture in the fabric and loading capacity.		

\*for Cottons and Easy-Care programmes only

\*\*Dryness levels can be selected individually → Cupboard Dry Extra, Cupboard Dry and Iron Dry (depending on the model).

Degree of dryness can be finely adjusted; multi-layered textiles require a longer drying time than single-layered items of clothing. Recommendation: Dry separately.

9704 / 9001289276



Siemens Electrogeräte GmbH  
Carl-Wery-Str. 34  
81739 München/Deutschland

WT44E100IN

Manufactured by BSH Hausgeräte GmbH under Trademark License of Siemens AG



## Preparation

1. Empty the condensation container → page 4.
2. Select any programme using the programme selector.
3. Press the **Start/Pause** button → condensation is pumped into the container.
4. Wait 5 min., and then empty the condensation container again.
5. Turn the programme selector to **Off**.



Do not set up the dryer behind a door or sliding door as this may obstruct or prevent the dryer door from opening. This will prevent a potentially fatal danger to children from locking themselves in.

## 2.

**Mains connection** see safety instructions → Page 11.

- Connect to an AC earthed socket. If in doubt have the socket checked by an expert.
- The mains voltage and the voltage shown on the rating plate (→ Page 9) must correspond.
- The connected load and necessary fuse protection are specified on the rating plate.

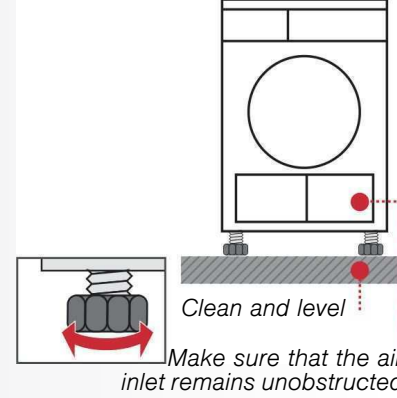
## 1.

**Setting up the dryer**

- The appliance plug must always be accessible.
- Ensure that the appliance is installed on a clean, level and solid surface.
- Keep the cooling grille at the front of the dryer unobstructed.
- Keep the area around the dryer clean.
- Make the dryer level using the threaded feet and a spirit level.  
Do not remove the threaded feet under any circumstances.



Take all accessory parts out of the drum. The drum must be empty.



## Frost protection / Transport



Do not operate the dryer if there is a danger of frost.

## Technical data

● <b>Dimensions (DxWxH)</b>	60 x 60 x 85 cm (height adjustable)
<b>Weight</b>	approximately 45 kg
<b>Max. capacity</b>	7 kg
<b>Condensate container</b>	4.2 l
<b>Connection voltage</b>	
<b>Connected load</b>	
<b>Fuse protection</b>	see appliance rating plate
<b>Ambient temperature</b>	
<b>Product number/ Production number</b>	

You can find the rating plate on the back of the dryer.

## Consumption values table

Programme	Spin speed which is used for spinning the laundry	Duration**	Energy consumption**
<b>Cottons</b>		<b>7 kg</b>	<b>7 kg</b>
Cupboard Dry*	1400 rpm	112 min	3.67 kWh
	1000 rpm	131 min	4.28 kWh
	800 rpm	150 min	4.90 kWh
Iron Dry*	1400 rpm	93 min	2.65 kWh
	1000 rpm	111 min	3.34 kWh
	800 rpm	130 min	4.05 kWh
<b>Easy-Care</b>		<b>3.5 kg</b>	<b>3.5 kg</b>
Cupboard Dry*	800 rpm	48 min	1.39 kWh
	600 rpm	60 min	1.70 kWh

\* Programme setting for testing in accordance with the applicable IEC61121 standard.

\*\* The values may differ from those specified, depending on the type of fabric, composition of laundry to be dried, residual moisture in the laundry, the degree of dryness that has been set, the amount of laundry being loaded, the environmental conditions, and any additional functions that have been activated.

## Optional accessories (from after-sales service using order number)

**WZ 20500 Platform**  
For easier loading and unloading. The basket contained in the drawer can be used to carry the laundry.

**WZ 20310 Washer-dryer stack connection set**  
The dryer can be placed on top of a suitable washing machine with the same width and depth to save space. The dryer **must be** fastened to the washing machine using this connection set. With pull-out worktop: WZ 20300

**WZ 20160 Connection fittings for condensation outlet**  
The condensation is conveyed directly via a hose.

**WZ 20290 Installation underneath the worktop**  
Instead of the appliance covering plate, you **must** have a metal cover fitted by a specialist.

## What to do if ...





If you cannot rectify a fault yourself (e.g. switching off/on), please contact our after-sales service. We will always find an appropriate solution and will avoid unnecessary visits by engineers. Trust the expertise of the manufacturer and rest assured that the repair will be carried out by trained service technicians using original spare parts. The contact details of your local after-sales service can be found in the enclosed **after-sales service** directory. When contacting the after-sales service, please quote the appliance's product number (E no.) and production number (FD) (see the inside of the door). Set the programme selector to **Off** and remove the appliance plug from the socket.

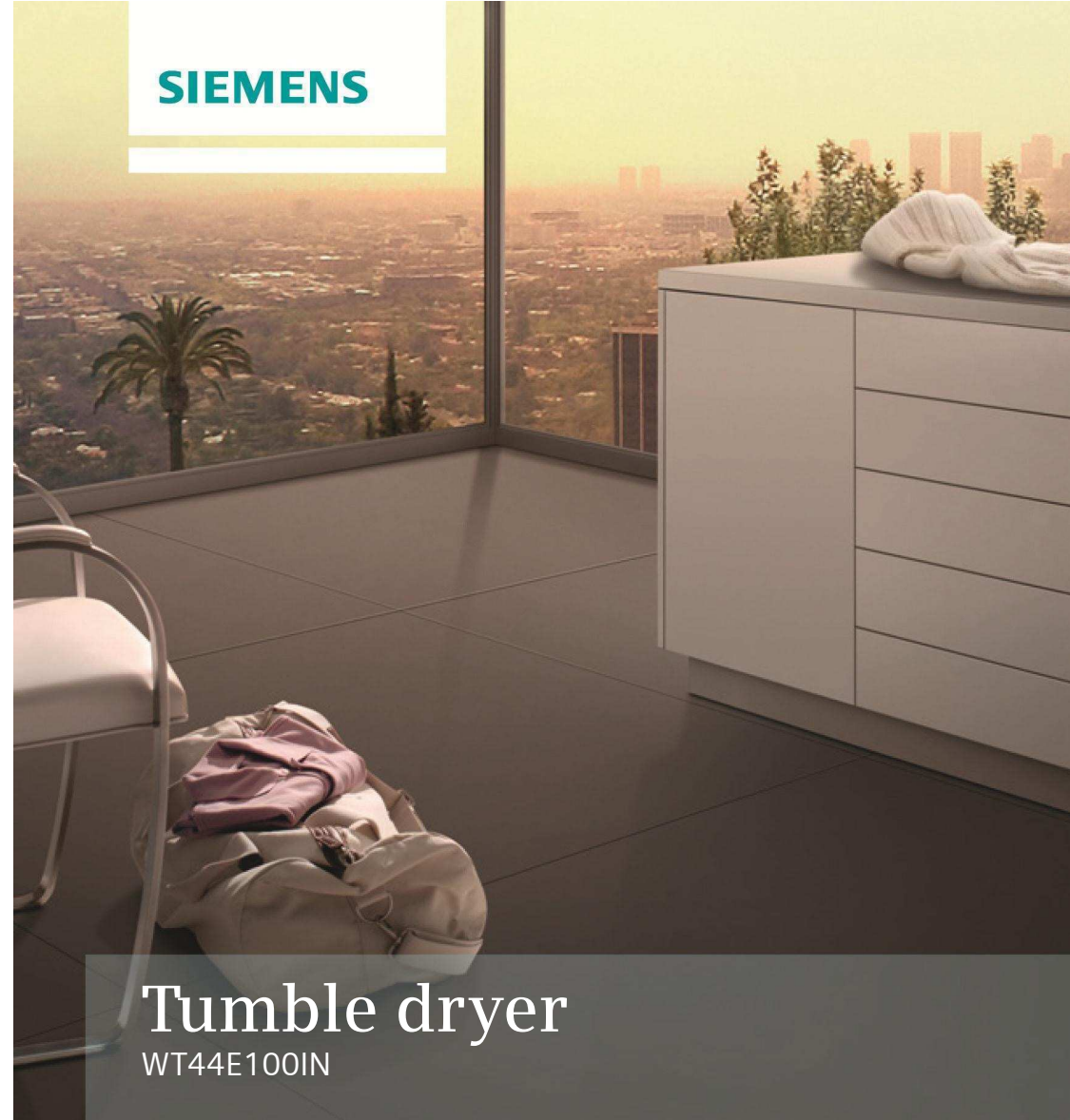
- The **Start/Pause** indicator lamp does not light up. Mains plug plugged in? Programme selected? Check the socket fuse.
- The display panel light and indicator lights (*depending on model*) go out and the **Start/Pause** indicator light flashes. Energy-saving mode is activated → see the separate *Energy-saving mode* instructions.
- The **Empty water** and **Start/Pause** indicator lamp flash. Empty the condensate container. If featured, check hose for condensation outlet.
- The **Clean filter** and **Start/Pause** indicator lamp flash. Clean the fluff filter and/or air cooler under running water → *Page 4/6*.
- Dryer does not start. **Start/Pause** button selected? Door closed? Ambient temperature greater than 5 °C? The optimum ambient temperature for drying is between 5 °C and 35 °C.
- Water is running out. Align dryer horizontally. Clean air cooler seal.
- The door opens by itself. Push the door closed until you hear it engage.
- Creasing. Laundry load exceeded? Remove articles of clothing immediately after the end of the programme, hang up and pull into shape. Unsuitable programme selected → *Page 7*.
- Laundry is not dried correctly or is still too damp. After the end of the programme, warm laundry feels damper than it actually is. Spread the laundry out and allow the heat to disperse. Finely adjust the dryness level – this extends the drying time but does not increase the temperature. Your laundry will become drier. Select a programme with a longer drying time or increase the drying level. This does not increase the temperature. Select a time programme for extended drying of laundry that is still damp. If you have exceeded the maximum load for the programme, the laundry may not be dried correctly. Clean the moisture sensor in the drum. A fine layer of limescale may adversely affect the performance of the sensors and your washing will not dry properly. Drying has been interrupted as a result of a power cut, because the condensate container is full or because the maximum drying time has been exceeded.
- Drying time too long. Rinse the fluff filters under running water → *Page 4*. Insufficient supply of air → ensure that air can circulate. Air inlet possibly blocked → Clean inlet → *Page 8*. Ambient temperature higher than 35 °C → ventilate the room. The optimum ambient temperature for drying is between 5 °C and 35 °C. Outside of this range, the drying time may increase.
- The humidity in the room increases significantly. Make sure the room is sufficiently ventilated.
- Power failure. Remove laundry from the dryer immediately and spread out. This allows the heat to dissipate. Be careful as the door, the drum and the laundry may be hot.
- One or more indicator lights for programme status are flashing. Clean filter and air cooler → *Page 4/6*. Check installation conditions → *Page 8*. Switch off, leave to cool down, switch on again, restart programme.
- The **Start/Pause** indicator lamp does not light up. Mains plug plugged in? Programme selected? Check the socket fuse.

# Safety instructions



- Emergency** – Pull the appliance plug out of the socket immediately or disconnect the fuse.
- ONLY use the dryer...** – in rooms inside the house.  
– to dry fabrics.
- The dryer must NEVER...** – be used for other purposes than those described above.  
– be modified in terms of its technology or attributes.
- Dangers** – The dryer must not be used by children or persons who have not been instructed in its use.  
– Do not leave children unsupervised near the dryer.  
– Keep pets away from the dryer.  
– Remove all objects from pockets. Make especially sure that cigarette lighters are removed as they constitute an → **explosion hazard**.  
– Do not lean or sit on the door → **risk of tipping**.
- Installation** – Secure loose cables → **tripping hazard**.  
– Do not operate the dryer if there is a risk of frost.
- Mains connection** – Connect the dryer according to specifications to an AC earthed socket, as otherwise it cannot be guaranteed that the appliance is completely safe.  
– The cable cross-section must be sufficient.  
– Only use earth-leakage circuit breakers with the following symbol:   
– The appliance plug and socket must be compatible.  
– Do not use multiple plugs/couplings and/or extension cables.  
– Do not hold the appliance plug with wet hands → **risk of electric shock**.  
– Never pull the appliance plug out of the socket by its cable.  
– Do not damage the mains lead → **risk of electric shock**.
- Operation** – Only load the drum with laundry. Check the contents before you switch the dryer on.  
– Do not use the dryer if the laundry has been in contact with solvents, oil, wax, grease or paint (e.g. hair setting spray, nail polish remover, stain remover, cleaning solvent, etc.) → **fire/explosion hazard**.  
– The tumble dryer is not to be used if industrial chemicals have been used for cleaning.  
– Dust (e.g. coal dust, flour) poses a danger: do not use the dryer → **explosion hazard**.  
– Do not turn off the dryer until the drying process ends, unless the laundry will be removed quickly and spread out, so that the heat can dissipate.  
– Do not put laundry containing foamed material/rubber in the dryer → elastic material may be destroyed and the dryer may be damaged due to possible deformation of the foamed material.  
– Light things, such as long hair, may be sucked into the air inlet of the dryer → **risk of injury**.  
– Final part of a tumble dryer cycle occurs without heat (cool down cycle), to ensure that the items are left at a temperature that ensures that the items will not be damaged.  
– Switch off the dryer once the programme has ended.  
– The exterior of the appliance's rear panel becomes very hot during operation. Never touch the hot surface of the appliance's rear panel. Keep children away from the appliance → **risk of burns**.   
– Condensation is not drinking water and may be contaminated with fluff.
- Defect** – Do not use the dryer if it is defective or if you suspect it is. Repairs must only be carried out by the after-sales service.  
– Do not use the dryer if the mains cable is defective. To avoid danger, only have the defective mains cable replaced by the after-sales service.  
– Always pull the mains plug out of the socket before changing the bulb for the interior light → **risk of electric shock**.
- Spare parts** – Only use genuine spare parts and accessories for safety reasons.
- Disposal** – Dryer: pull out the appliance plug, **then** cut off the mains cable from the appliance. Dispose of at municipal waste disposal facility.  
– Packaging: do not leave children alone with packing parts → **risk of suffocation**.  
– All materials are environmentally sound and can be reused. Dispose of in an environmentally-responsible manner.

SIEMENS



## Tumble dryer

WT44E100IN

[siemens-home.bsh-group.com/welcome](https://siemens-home.bsh-group.com/welcome)

### en Operating instructions



Observe the safety instructions on page 8.



Read these instructions and the separate installation instructions before operating the dryer.

Register  
your  
product  
online