

Your new dryer

Congratulations - You have chosen a modern, high-quality Siemens domestic appliance. The condensation dryer is distinguished by its economical energy consumption.

Every dryer which leaves our factory is carefully checked to ensure that it functions correctly and is in perfect condition. Should you have any questions, our after-sales service will be pleased to help.

Environmentally responsible disposal

Dispose of packaging in an environmentally-responsible manner. This appliance is certified in accordance with the guidelines on E-waste (Management) Rules 2016 which govern waste electrical and electronic equipment. The guidelines provide a framework for the return and recycling of used appliances.

! This product doesn't contain any of hazardous substances as specified in the E-waste (Management) Rules 2016.

Do's:
- Hand over the old/discarded electronic equipment only to authorized collection centers for disposal
<http://www.siemens-home.com/in/Preserve.html>

See also:
Contact No: 180042535287 (toll-free)
E-mail: recycle@ewasteindia.com
Online website: www.ewasteindia.com

- Consult the authorized service center as to whether the Electronic Equipment can be repaired or not, before discarding
- Consult the retailer about appliance take back schemes

Don'ts
- Don't dump the discarded Electronic Equipment in the open or in any land fill site, as this will result in contamination of the soil and the ground water
- Don't dispose of the discarded Electronic Equipment in household bins or Municipal bins
- The product is not meant for re-sale to any unauthorized agencies/scrap dealers
Don't keep any replaced spare part(s) from the product in an exposed area
For further information about our products, accessories, spare parts and services, please visit: www.siemens-home.com

Contents	Page
Preparation	2
Control panel	2
Drying	3/4
Display panel and settings	5
Notes on laundry	6
Overview of programmes	7
Care and cleaning	8
Installation	9
Frost protection / Transport	9
Optional accessories	10
Technical data	10
Consumption rates	10
After-sales service	11
What to do if	11/12
Safety instructions	13

Intended use

- exclusively for domestic use,
- only for drying fabrics which have been washed using water.

! This appliance is intended for use up to a maximum height of 4000 metres above sea level. Keep children younger than 3 years old away from the dryer.
Do not let children make the cleaning and maintenance work on the dryer without supervision. Do not leave children unsupervised near the dryer. Keep pets away from the dryer.
The dryer can be operated by children 8 years old and older, by persons with reduced physical, sensory or mental abilities and by persons with insufficient experience or knowledge if they are supervised or have been instructed in its use by a responsible adult.

Programmes / Fabrics

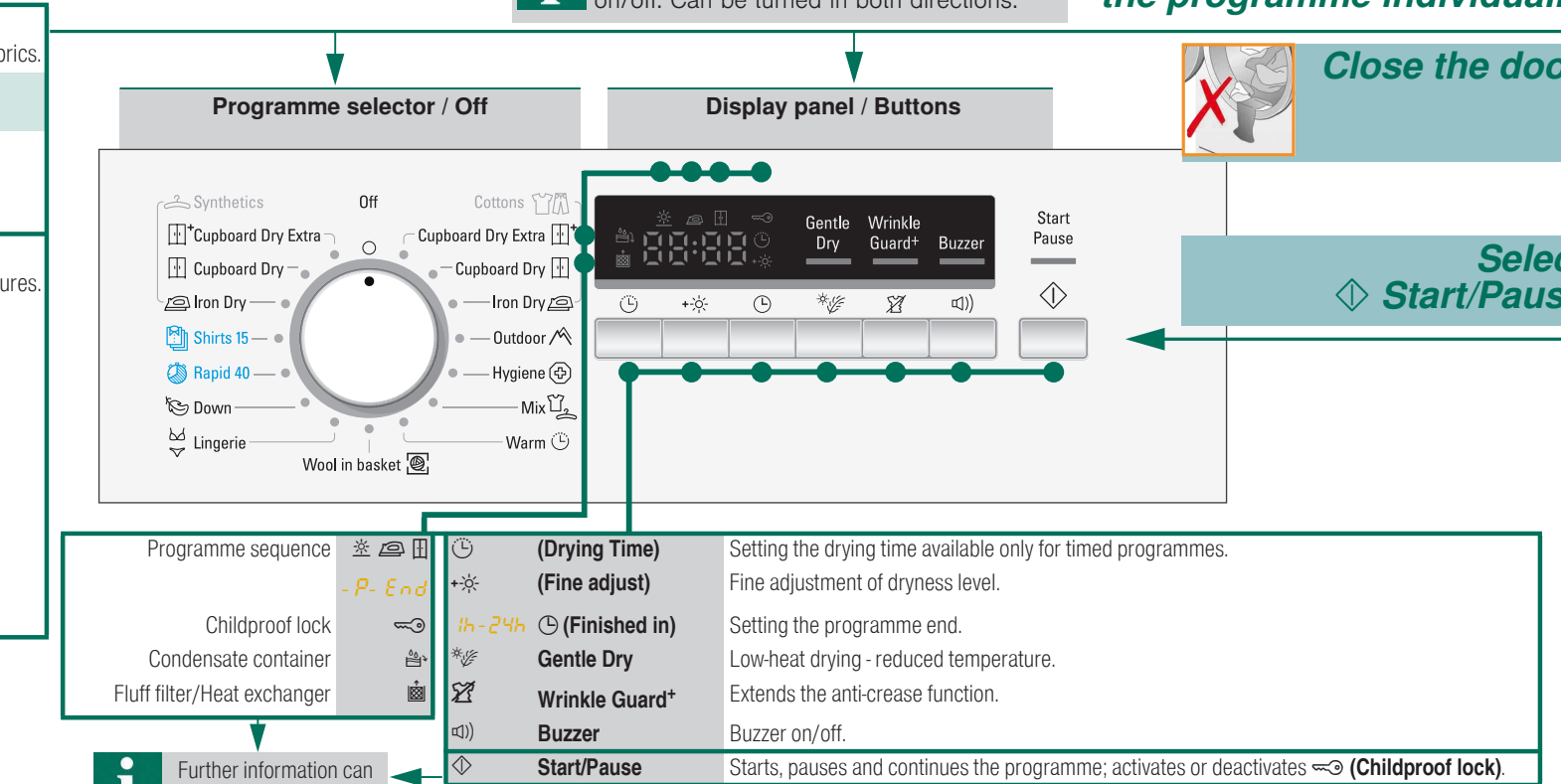
Cottons	Hard-wearing fabrics.
Synthetics	Fabrics made from synthetic or blended fabrics.
Dryness levels to select with the Cottons and Synthetics programmes:	
Cupboard Dry Extra	Thick and multi-layered fabrics.
Cupboard Dry	Single-layered laundry.
Iron Dry	Laundry suitable for ironing after drying.
Outdoor	Functional clothing made of microfibre.
Hygiene	Cotton fabrics for drying in higher temperatures.
Mix	A mixed load of fabrics made of cotton and synthetic fabrics.
Warm	All types of fabric except for wool and silk.
Shirts 15	Cotton or linen fabrics that are still damp and easy-care fabrics.
Down	Fabrics with down filling.
Lingerie	Lingerie made of synthetic fibres, cotton or blended fabric.
Wool in basket	Woollen fabrics that are suitable for use in washers.

Preparation

! Never start the dryer if it is damaged! Inform your after-sales service!
! Make sure your hands are dry. Only grasp the plug by the plug body.

! Remove all items from pockets, especially cigarette lighters. The drum must be empty prior to loading.
See programme overview on page 7. See also separate instructions for "Woolens basket" (depending on model).

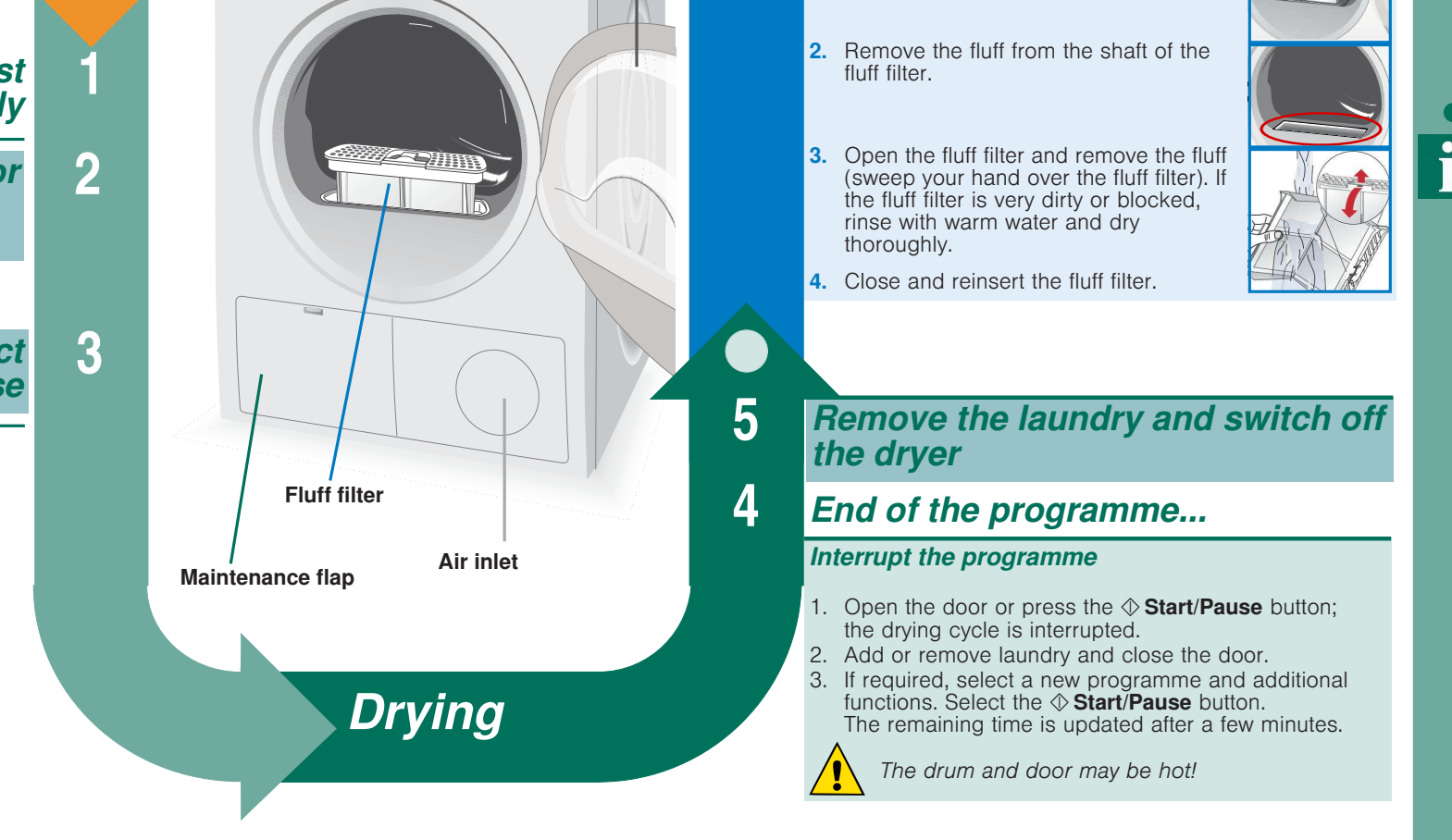
Programme selector for setting the programme and switching the appliance on/off. Can be turned in both directions.



Drying

! Inspect the dryer
! Connect the mains plug
! Sort the laundry

! Set and adjust the programme individually
! Close the door
! Select Start/Pause



Empty the condensate container

Empty the container **after each** drying cycle.
1. Remove the container, holding it level.
2. Pour out the condensate.
3. Push the container back in until it clicks into place.
If **(Condensate container)** flashes in the display panel → *What to do if...*, page 11.

Clean fluff filter

Do not operate the dryer without a fluff filter or with a defective fluff filter. A clean fluff filter minimises energy consumption.
Clean the fluff filter **after each** drying cycle.

- Open the door. Remove any fluff from the door/around the door and pull out the fluff filter.
- Remove the fluff from the shaft of the fluff filter.
- Open the fluff filter and remove the fluff (sweep your hand over the fluff filter). If the fluff filter is very dirty or blocked, rinse with warm water and dry thoroughly.
- Close and reinsert the fluff filter.

! Remove the laundry and switch off the dryer
! End of the programme... Interrupt the programme

! The drum and door may be hot!

Display panel and settings

! Display panel (status indicators)

(Fluff filter/Heat exchanger) Clean the fluff filter → page 4/11 or clean the heat exchanger → page 8.
(Condensate container) Empty the condensate container → page 4/11.
(Programme sequence) These indicators show the programme progress in the next steps of the drying cycle:
☼ Drying;
☼ Iron Dry;
☼ Cupboard Dry;
-P- Programme pause → if required;
End Programme end.

(Childproof lock) You can lock the dryer to prevent the functions you have set from being changed inadvertently. To activate/deactivate (Childproof lock) start the programme and then press and hold the **Start/Pause** button for 5 seconds until a long acoustic signal is heard. The option activated/deactivated → (Childproof lock) indicator light on/off.

[h:min] (Remaining time) When a programme is selected, the anticipated drying time (remaining time) for the recommended load is displayed. While drying, the moisture sensors detect the actual load and correct the programme length. This is shown by jumps in the remaining time in the display panel.

! Settings (Indicators lights and buttons)

Selected option activated/deactivated → indicator light on/off. See the separate **Energy-saving mode** instructions.

(Drying time) Drying time, available only for timed programmes, can be selected from min. 0:20 h to max. 3:00 h, in 10-minute steps.

(Fine adjust) The dryness levels (e.g. Cupboard Dry) can be increased in three levels. The laundry is made drier. Default = 0. Selectable values: 0, 1, 2, 3. After setting the level of the fine adjustment for a programme, it is also retained for other programmes, until **(Fine adjust)** is changed again.

(Finished in) The time when the programme has to end can be set by selecting the **(Finished in)** time. The **(Finished in)** time can be selected in one-hour steps, up to a maximum of 24 hours. Select the **(Finished in)** button repeatedly until the required number of hours is displayed. Then press the **Start/Pause** button to activate the **(Finished in)** option. The programme ends after the selected number of hours. Several minutes after activating **(Finished in)** option the display switches off to save energy. To switch it on select any button, close/open the door or turn the programme selector.

Gentle Dry Reduced temperature for delicate fabrics, e.g. polyacrylic, polyamide or elastane, with a longer drying time.
Wrinkle Guard* After the programme finishes, the drum moves at regular intervals to prevent creases. Laundry remains loose and fluffy. The standard setting for each programme is 60 min. Automatic anti-crease function can be extended by up to 60 min.

Buzzer For switching the buzzer on and off. **Buzzer** indicates program end if it is activated. Other sounds are not influenced by this option.

Notes on laundry ...

! Labelling of fabrics
! Follow the manufacturer's care instructions.

- ☐ Suitable for tumble drying.
- ☒ Dry at normal temperature.
- ☒ Dry at low temperature → in addition, select **Gentle Dry**.
- ☒ Do not tumble dry.

! Do not tumble dry the following fabrics:
- Non-breathable fabrics (e.g. rubber-coated).
- Delicate materials (silk, curtains made from synthetic material) → these may crease.
- Oil-stained laundry.

! Drying tips

- To ensure a consistent drying result, sort the laundry by fabric type and drying programme. Always dry very small fabrics (e.g. baby socks) together with large items of laundry (e.g. towels).
- Close zips, hooks and eyelets, and button up covers. Tie cloth belts, apron strings, etc. together or use a laundry bag.
- Do not over-dry easy-care laundry → risk of creasing. Allow laundry to finish drying in the air.
- Do not dry woollens in the dryer. They may, however, be refreshed in the dryer → page 7, **Wool finish** programme (depending on model).
- Do not iron laundry immediately after drying; fold items up and leave for a while → residual moisture will then be distributed evenly.
- Knitted fabrics (e.g. T-shirts, jerseys) often shrink slightly the first time they are tumble-dried. → Do not use the **Cupboard Dry Extra** programme.
- Starched laundry is not always suitable for dryers → starch leaves behind a coating that reduces the drying effect.
- When washing laundry that is to be tumble dried afterwards, use the correct amount of fabric softener as specified in the manufacturer's instructions.
- For pre-dried, multi-layered fabrics or small, individual items of laundry, use the timed programme. Also suitable for subsequent drying.

Environmental protection / Energy-saving tips

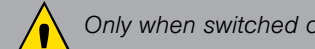
- Before drying, spin the laundry in the washing machine → higher spin speeds minimise the drying time and reduce energy consumption.
- Use the maximum recommended capacity, but do not exceed it → *Programme overview, page 7*.
- Make sure the room is well ventilated during drying.
- Clean the fluff filter after every drying cycle → *Clean the fluff filter, page 4/11*.
- Do not cover or seal the air inlet on the dryer.

Programme overview see also page 6.
Sort the laundry according to type of textile and fabric. Fabrics must be suitable for tumble drying.

PROGRAMMES	After drying, laundry is to be ...	Ironed	lightly ironed	not ironed	mangled
Cottons	Hard-wearing fabrics, boil-proof fabrics made of cotton or linen.				
Synthetics	Non-iron laundry made of synthetic fibres and mixed fabric, easy-care cotton.				
Iron Dry	The condition of the laundry means it is suitable for ironing (iron clothes in order to avoid creases).				
Cupboard Dry	Single-layered laundry.				
Cupboard Dry Extra	Laundry with thick, multi-layered parts.				
Outdoor	Fabrics with membrane coating, water-repellent fabrics, functional clothing, fleece fabrics (dry jackets/trousers with removable inner lining separately).				
Hygiene	Cotton fabrics for drying in higher temperatures to keep them more hygienic.				
Mix	Mixed items of laundry made of cotton and synthetics (Mix).				
Warm	Pre-dried, multi-layered, sensitive fabrics made of acrylic fibres, or separate small items of laundry. Also for subsequent drying.				
Shirts 15	For optimal drying result dry a maximum of 5 business shirts together. After drying, iron clothes or hang them out and leave for a while. The remaining moisture will be distributed evenly.				
Super 40	Laundry made of synthetic fibres, cotton or blended fabrics (for example) that needs to be dried quickly. The values may differ from those specified depending on the type of fabric, mixture of laundry to be dried, residual moisture in the laundry and loading capacity.				
Down	Garments with down feather fillings, pillows and blankets. By non quilt loads - please add just 1 piece per drying.				
Lingerie	Lingerie made of synthetic fibres, cotton or blended fabric.				
Wool in basket	Use with separate basket only. See description of "Woolens basket".				

*Dryness levels can be selected individually
Degree of dryness can be finely adjusted; multi-layered textiles require a longer drying time than single-layered items of clothing. Recommendation: Dry separately.

Care and cleaning



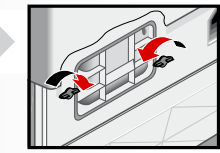
Dryer housing, control panel

- Wipe clean with a soft, damp cloth.
- Do not clean with a water jet.
- Remove detergent and cleaning agent residue immediately.
- During drying, water may occasionally accumulate between the window and the seal. This does not affect the proper operation of your dryer.

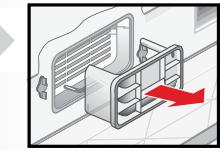
Heat exchanger

The heat exchanger requires cleaning once a month, however this varies depending on how frequently the dryer is used. Allow the dryer to cool down and place an absorbent cloth under the maintenance flap. Residual water may escape.

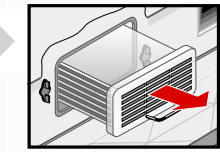
- Unlock the maintenance flap and open completely.
- Turn both locking levers towards each another.



- Pull out the cap.

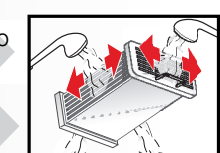


- Remove the heat exchanger.

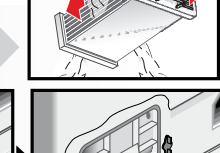


Take care not to damage the heat exchanger. When cleaning, use water only. Do not use hard or sharp-edged objects.

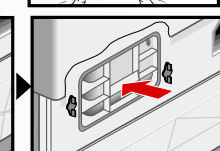
- Rinse the heat exchanger and the cap on all sides with a jet of water to completely remove all of the fluff.



- Remove any fluff from the seals on the dryer and heat exchanger.



- Allow to drip dry fully.
- First insert the heat exchanger, then the cap.
- Turn back both locking levers and close the maintenance flap until it locks closed.



Moisture sensors

The dryer is equipped with stainless steel moisture sensors. Moisture sensors measure the moisture level of the laundry. After sustained, repeated operation, a fine layer of limescale may form on the moisture sensors.

- Open the door.
- Clean the moisture sensors with a damp sponge which has a rough surface.



Do not use steel wool or abrasive agents!

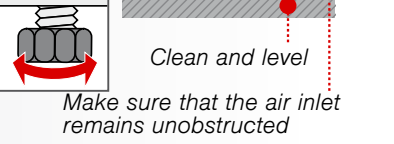
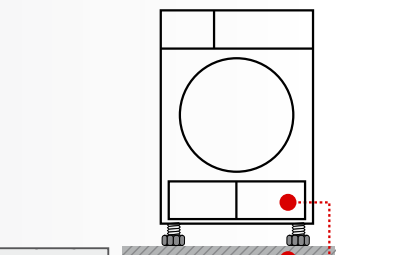
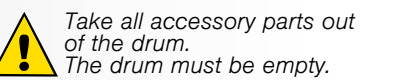
Installation

- Scope of delivery: dryer, operating and installation instructions, basket for woollens (depending on the model).
- Check the dryer for transport damage.
- The dryer is very heavy. Do not attempt to lift it on your own.
- Be careful to avoid sharp edges.
- Do not lift the dryer by protruding parts (e.g. the door) - risk of breakage.
- Do not set up in a room that is susceptible to frost.
- Freezing water may cause damage.
- If in doubt, have the appliance connected by a specialist.

1. Setting up the dryer

- The mains plug must always be accessible.
- Ensure that the appliance is placed on a clean, level and firm surface.
- Do not obstruct the air inlet on the dryer.
- Keep the area around the dryer clean.
- Level the dryer using the threaded feet and a spirit level.
- Never remove the threaded feet!

Do not install the dryer behind a door or sliding door which could prevent or obstruct the dryer door from opening. This will prevent children from locking themselves in and risking their lives.



2. For mains connection, see Safety instructions → page 13.

- Connect to an AC earthed socket. If in doubt have the socket checked by a specialist.
- The mains voltage and the voltage shown on the rating plate (→ page 10) must be the same.
- The connected load and necessary fuse protection are specified on the rating plate. Do not operate the dryer if there is a risk of frost.

Frost protection / Transport

Preparation

- Empty the condensate container → page 4/11.
- Select any programme using the programme selector.
- Press the Start/Pause button → condensation is pumped into the container.
- Wait several minutes or until the dryer stops, and then empty the condensate container again.
- Turn the programme selector to Off.

Optional accessories (order from the after-sales service using the order number, depending on the model)

WZ 20160 **Connection fittings for condensation outlet**
The condensation is conveyed directly via a hose.

WZ 20500 **Platform**
For easier loading and unloading. The basket contained in the drawer can be used to carry the laundry.

WZ 20410 **Washer-dryer stack connection set**
The dryer can be placed on top of a suitable washing machine with the same width and depth to save space. The dryer **must** be fastened to the washing machine using this connection set. WZ 20400: with pull-out worktop.

Technical data

- Dimensions (DxWxH)** 60 x 60 x 85 cm (height adjustable)
- Weight** approx. 45 kg
- Max. capacity** 8 kg
- Condensation container** 4.2 l
- Connection voltage** 220 - 240V
- Connected load** 2600 W
- Fuse protection** 13 A
- Ambient temperature** 5-35°C
- Product number** Inside of door
- Production number** Inside of door
- The rating plate can be found on the back of the dryer.
- Drum interior light** (depending on model): The drum lights up after the door is opened and after the programme starts, and switches off automatically.

Consumption rates

(The value on the label is achieved at the maximum heat setting.)

Fabrics/programmes	Residual moisture in the fabrics after spinning	Drying time**	Energy consumption**
Cottons 8 kg		13 A	13 A
Cupboard Dry*	1400 U/min (50%)	117 min	3.97 kWh
	1000 U/min (60%)	137 min	4.63 kWh
	800 U/min (70%)	158 min	5.29 kWh
Iron Dry*	1400 U/min (50%)	91 min	2.86 kWh
	1000 U/min (60%)	108 min	3.61 kWh
	800 U/min (70%)	124 min	4.37 kWh
Synthetics 3.5 kg			
Cupboard Dry*	800 U/min (40%)	46 min	1.42 kWh
	600 U/min (50%)	56 min	1.74 kWh

* Programme setting for testing in accordance with applicable standard EN61121.
** The values may differ from those specified, depending on the type of fabric, composition of laundry to be dried, residual moisture in the fabric, the degree of dryness that has been set, the amount of laundry being loaded and the environmental conditions.

Fabrics/programmes	Drying time	Annual energy consumption
Cottons 8 kg / 4 kg*		
Cupboard Dry***	106 min / cycle	561 kWh / year

***Programme setting for testing and energy labelling in accordance with Directive 2010/30/EU.

After-sales service

If you cannot rectify the fault yourself (e.g. switching off/on) → *What to do if...*, page 11/12, please contact our after-sales service. We will always find an appropriate solution and avoid unnecessary visits by engineers.

The contact details of your local **after-sales service** can be found in the enclosed after-sales service directory.
– **GB** 0344 892 8999 (Calls charged at local or mobile rate.)
– **IE** 01450 2655 (0.03 € per minute at peak. Off peak 0.0088 € per minute.)

Please provide the after-sales service the product number (E no.) and the production number (FD) of the appliance.

E-Nr. _____ FD _____

Product number Production number

Trust the expertise of the manufacturer. Contact us for assistance. In this way, you can rest assured that the repair will be carried out by trained service technicians using original spare parts.

You can find this information: inside the door* / in the opened service flap* and on the rear of the appliance. *depending on the model

What to do if ...

Turn the programme selector to **Off** and remove the mains plug from the socket.

- The Start/Pause indicator light does not light up. Mains plug plugged in? Programme selected? Check the socket fuse.

- The display panel light and indicator lights (depending on model) go out and the Start/Pause indicator light flashes. Energy-saving mode is activated → see the separate Energy-saving mode instructions.

- The display panel switches off. The appliance goes into the sleep mode after activating (Finished in) option → page 5.

- The Condensate container indicator light flashes. Empty the condensate container → page 4. Press the Start/Pause button to reset the displayed indication and then press the Start/Pause button again to restart the appliance if necessary. If featured, check the hose for condensation outlet.

- Fluff filter/Heat exchanger indicator light flashes. Clean the fluff filter → page 4. Press the Start/Pause button to reset the displayed indication and then press the Start/Pause button again to restart the appliance if necessary. Clean the heat exchanger → page 8.

- Dryer does not start. Start/Pause button selected? Door closed? Ambient temperature greater than 5°C? The optimum ambient temperature for drying is between 5 °C and 35 °C.

What to do if ...

- Programme terminates shortly after starting. Is the appliance loaded with the laundry? Load too small for selected programme?/Use timed programme → page 6/7. Loaded laundry dry?

- Water is leaking out. Make sure the dryer is level. Clean the heat exchanger seal.
- The door opens by itself. Push the door closed until you hear it engage.

- Creasing. Laundry load exceeded? Remove articles of clothing immediately after the end of the programme, hang up and pull into shape. Unsuitable programme selected → page 7.

- Laundry is not dried correctly or is still too damp. After the end of the programme, warm laundry feels damper than it actually is. Spread the laundry out and allow the heat to disperse.

Finely adjust the dryness level – this extends the drying time but does not increase the temperature. Your laundry will become drier.

Select a programme with a longer drying time or increase the drying level. This does not increase the temperature.

Select a time programme for extended drying of laundry that is still damp.

If you have exceeded the maximum load for the programme, the laundry may not be dried correctly.

Clean the moisture sensor in the drum. A fine layer of limescale may adversely affect the performance of the sensors and your washing will not dry properly.

Drying has been interrupted as a result of a power cut, because the condensate container is full or because the maximum drying time has been exceeded.

- Drying time too long. Clean the fluff filter under running water → page 4/11. Insufficient supply of air → Ensure that air can circulate. Air inlet possibly blocked → Clear inlet → page 9.

Ambient temperature higher than 35°C → Ventilate the room. The optimum ambient temperature for drying is between 5 °C and 35 °C. Outside of this range, the drying time may increase.

- One or more indicator lights are flashing. Clean the fluff filter and heat exchanger → page 4,8/11. Check the installation conditions → page 9. Switch off, allow to cool, switch back on and restart the programme.

- Power failure. Remove the laundry from the dryer immediately and spread out. This allows the heat to dissipate. Be careful as the door, the drum and the laundry may be hot.

What to do if ...

- Emergency ONLY use the dryer... Pull the appliance plug out of the socket immediately or disconnect the fuse.

The dryer must NEVER...
– be used for purposes other than those described above.
– be modified in terms of its technology or properties.

Hazards
– The dryer must not be used by children or persons who have not been instructed in its use.
– Do not leave children unsupervised near the dryer.
– Keep pets away from the dryer.
– Remove all objects from pockets, and lighters in particular → **Risk of explosion**.
– Do not lean or sit on the door → **Risk of tipping**.

Installation
– Secure loose cables → **Risk of tripping**.
– Do not operate a dryer if there is a risk of frost.

Mains connection
– Connect the dryer to an AC earthed socket according to specifications, otherwise it cannot be guaranteed that the appliance is completely safe.
– The cable cross-section must be sufficient.

– Only use earth-leakage circuit breakers with the following symbol:
– The appliance plug and socket must be compatible.
– Do not use multiple plugs/connectors and/or extension cables.
– Do not touch or hold the appliance plug with wet hands → **Risk of electric shock**.
– Never pull the appliance plug out of the socket by its cable.
– Do not damage the mains lead → **Risk of electric shock**.

Operation
– Only load the drum with laundry.
– Check the contents before you switch the dryer on.
– Do not use the dryer if the laundry has been in contact with solvents, oil, wax, grease or paint (e.g. hair setting spray, nail polish remover, stain remover, cleaning solvent, etc.) → **fire/explosion hazard**.
– The tumble dryer is not to be used if industrial chemicals have been used for cleaning.
– Dust (e.g. coal dust, flour) poses a danger: do not use the dryer → **explosion hazard**.
– Do not turn off the dryer until the drying process ends, unless the laundry will be removed quickly and spread out, so that the heat can dissipate.
– Do not put laundry containing foamed material/rubber in the dryer → elastic material may be destroyed and the dryer may be damaged due to possible deformation of the foamed material.

– When cleaning the fluff filter, make sure that no foreign material (down or filling material) gets into the air duct opening. If necessary, clean the drum beforehand with a vacuum cleaner. If foreign material should still get into the air duct → call the after-sales service → **Risk of fire/explosion**.
– Light things, such as long hair, may be sucked into the air inlet of the dryer → **Risk of injury**.

– Final part of a tumble dryer cycle occurs without heat (cool down cycle), to ensure that the items are left at a temperature that ensures that the items will not be damaged.
– Switch off the dryer once the programme has ended.
– The exterior of the appliance's rear panel becomes very hot during operation. Never touch the hot surface of the appliance's rear panel. Keep children away from the appliance → **Risk of burns!**

– The water from condensation is not drinking water and may be contaminated with fluff.

Defect
– Do not use the dryer if it is defective or if you suspect that it is. Repairs must only be carried out by the after-sales service.
– Do not use the dryer if the mains cable is defective. To avoid danger, only have the defective mains cable replaced by the after-sales service.

Spare parts
– For safety reasons, you must only use genuine spare parts and accessories.

Disposal
– Pull out the appliance plug, then cut off the mains cable from the appliance. Dispose of the appliance at a municipal waste disposal site.
– Packaging: Keep all packaging out of reach of babies and children → **Risk of suffocation**.
– All materials are environmentally sound and can be reused. Dispose of them in an environmentally-responsible manner.

Safety instructions

Emergency ONLY use the dryer...
– Pull the appliance plug out of the socket immediately or disconnect the fuse.

The dryer must NEVER...
– be used for purposes other than those described above.
– be modified in terms of its technology or properties.

Hazards
– The dryer must not be used by children or persons who have not been instructed in its use.
– Do not leave children unsupervised near the dryer.
– Keep pets away from the dryer.
– Remove all objects from pockets, and lighters in particular → **Risk of explosion**.
– Do not lean or sit on the door → **Risk of tipping**.

Installation
– Secure loose cables → **Risk of tripping**.
– Do not operate a dryer if there is a risk of frost.

Mains connection
– Connect the dryer to an AC earthed socket according to specifications, otherwise it cannot be guaranteed that the appliance is completely safe.
– The cable cross-section must be sufficient.

– Only use earth-leakage circuit breakers with the following symbol:
– The appliance plug and socket must be compatible.
– Do not use multiple plugs/connectors and/or extension cables.
– Do not touch or hold the appliance plug with wet hands → **Risk of electric shock**.
– Never pull the appliance plug out of the socket by its cable.
– Do not damage the mains lead → **Risk of electric shock**.

Operation
– Only load the drum with laundry.
– Check the contents before you switch the dryer on.
– Do not use the dryer if the laundry has been in contact with solvents, oil, wax, grease or paint (e.g. hair setting spray, nail polish remover, stain remover, cleaning solvent, etc.) → **fire/explosion hazard**.
– The tumble dryer is not to be used if industrial chemicals have been used for cleaning.
– Dust (e.g. coal dust, flour) poses a danger: do not use the dryer → **explosion hazard**.
– Do not turn off the dryer until the drying process ends, unless the laundry will be removed quickly and spread out, so that the heat can dissipate.
– Do not put laundry containing foamed material/rubber in the dryer → elastic material may be destroyed and the dryer may be damaged due to possible deformation of the foamed material.

– When cleaning the fluff filter, make sure that no foreign material (down or filling material) gets into the air duct opening. If necessary, clean the drum beforehand with a vacuum cleaner. If foreign material should still get into the air duct → call the after-sales service → **Risk of fire/explosion**.
– Light things, such as long hair, may be sucked into the air inlet of the dryer → **Risk of injury**.

– Final part of a tumble dryer cycle occurs without heat (cool down cycle), to ensure that the items are left at a temperature that ensures that the items will not be damaged.
– Switch off the dryer once the programme has ended.
– The exterior of the appliance's rear panel becomes very hot during operation. Never touch the hot surface of the appliance's rear panel. Keep children away from the appliance → **Risk of burns!**

– The water from condensation is not drinking water and may be contaminated with fluff.

Defect
– Do not use the dryer if it is defective or if you suspect that it is. Repairs must only be carried out by the after-sales service.
– Do not use the dryer if the mains cable is defective. To avoid danger, only have the defective mains cable replaced by the after-sales service.

Spare parts
– For safety reasons, you must only use genuine spare parts and accessories.

Disposal
– Pull out the appliance plug, then cut off the mains cable from the appliance. Dispose of the appliance at a municipal waste disposal site.
– Packaging: Keep all packaging out of reach of babies and children → **Risk of suffocation**.
– All materials are environmentally sound and can be reused. Dispose of them in an environmentally-responsible manner.



Tumble dryer
WT46B201IN
siemens-home.com/welcome

en Instructions for installation and use

Observe the safety instructions on page 13.

Read these instructions and the separate Energy-saving mode instructions before operating the dryer.

Register your product online

Your new dryer

Congratulations - You have chosen a modern, high-quality Siemens domestic appliance. The condensation dryer is distinguished by its economical energy consumption.

Every dryer which leaves our factory is carefully checked to ensure that it functions correctly and is in perfect condition. Should you have any questions, our after-sales service will be pleased to help.

Environmentally responsible disposal

Dispose of packaging in an environmentally-responsible manner. This appliance is certified in accordance with the guidelines on E-waste (Management) Rules 2016 which govern waste electrical and electronic equipment. The guidelines provide a framework for the return and recycling of used appliances.



This product doesn't contain any of hazardous substances as specified in the E-waste (Management) Rules 2016.

Do's:

- Hand over the old/discarded electronic equipment only to authorized collection centers for disposal
<http://www.siemens-home.com/in/Preserve.html>

See also:

Contact No: 180042535287 (toll-free)
E-mail: recycle@ewasteindia.com
Online website: www.ewasteindia.com

- Consult the authorized service center as to whether the Electronic Equipment can be repaired or not, before discarding
- Consult the retailer about appliance take back schemes

Don'ts

- Don't dump the discarded Electronic Equipment in the open or in any land fill site, as this will result in contamination of the soil and the ground water
 - Don't dispose of the discarded Electronic Equipment in household bins or Municipal bins
 - The product is not meant for re-sale to any unauthorized agencies/scrap dealers
- Don't keep any replaced spare part(s) from the product in an exposed area
For further information about our products, accessories, spare parts and services, please visit: www.siemens-home.com

Contents

	Page
Preparation	2
Control panel	2
Drying	3/4
Display panel and settings	5
Notes on laundry	6
Overview of programmes	7
Care and cleaning	8
Installation	9
Frost protection / Transport	9
Optional accessories	10
Technical data	10
Consumption rates	10
After-sales service	11
What to do if	11/12
Safety instructions	13

Intended use

- exclusively for domestic use,
- only for drying fabrics which have been washed using water.



This appliance is intended for use up to a maximum height of 4000 metres above sea level.

Keep children younger than 3 years old away from the dryer.

Do not let children make the cleaning and maintenance work on the dryer without supervision. Do not leave children unsupervised near the dryer. Keep pets away from the dryer.

The dryer can be operated by children 8 years old and older, by persons with reduced physical, sensory or mental abilities and by persons with insufficient experience or knowledge if they are supervised or have been instructed in its use by a responsible adult.

Programmes / Fabrics

Detailed overview of the programmes and fabrics → Programme overview, page 7.

Observe the care instructions on the care label.

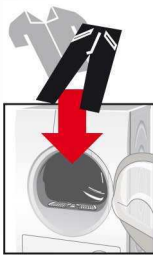
Cottons	Hard-wearing fabrics.
Synthetics	Fabrics made from synthetic or blended fabrics.
Dryness levels to select with the Cottons and Synthetics programmes:	
Cupboard Dry Extra	Thick and multi-layered fabrics.
Cupboard Dry	Single-layered laundry.
Iron Dry	Laundry suitable for ironing after drying.
Outdoor	Functional clothing made of microfibre.
Hygiene	Cotton fabrics for drying in higher temperatures.
Mix	A mixed load of fabrics made of cotton and synthetic fabrics.
Warm	All types of fabric except for wool and silk.
Shirts 15	Cotton or linen fabrics that are still damp and easy-care fabrics.
Rapid 40	Synthetics, cotton or blended fabrics.
Down	Fabrics with down filling.
Lingerie	Lingerie made of synthetic fibres, cotton or blended fabric.
Wool in basket	Woollen fabrics that are suitable for use in washers.

Preparation

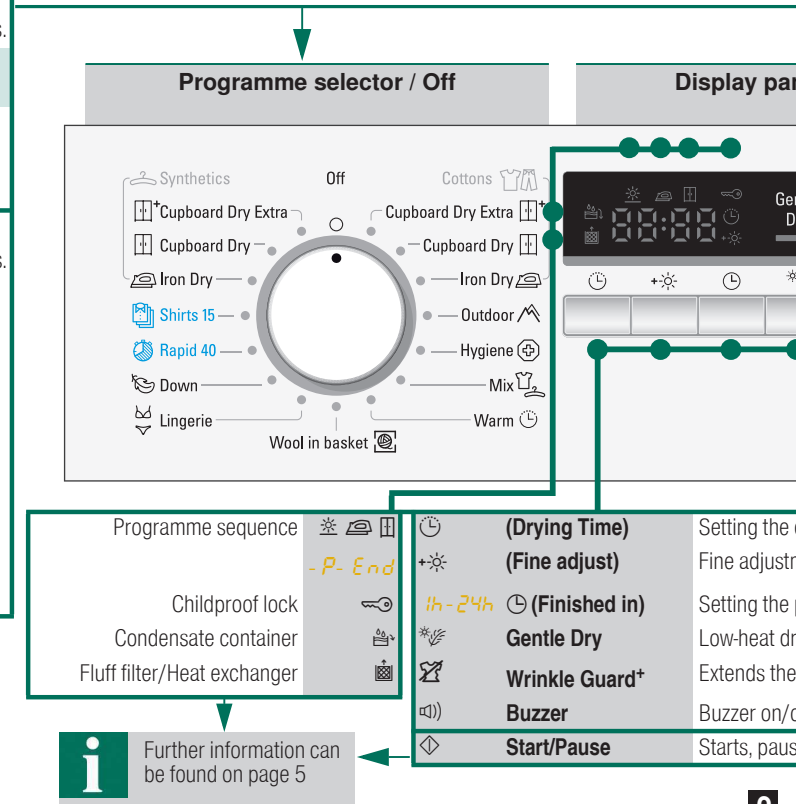
Installation → page 9.



Never start
Inform you



Programme selector for the programme and switch on/off. Can be turned



Further information can be found on page 5

Inspect the dryer if it is damaged!
Contact your after-sales service!

Inspect the dryer



Make sure your hands are dry.
Only grasp the plug by the plug
body.

Connect the mains plug



Sort the laundry

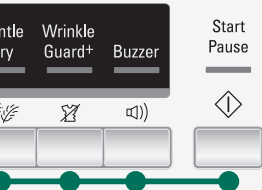
Remove all items from pockets,
especially cigarette lighters.
The drum must be empty prior to loading.

See programme overview on page 7.
See also separate instructions for "Woollens basket"
(depending on model).

For setting
or switching the appliance
in both directions.

Set and adjust the programme individually

Control Panel / Buttons



Close the door

Select Start/Pause

Drying time available only for timed programmes.

Adjustment of dryness level.

Programme end.

Reduced temperature.

Anti-crease function.

Off.

Starts and continues the programme; activates or deactivates (Childproof lock).

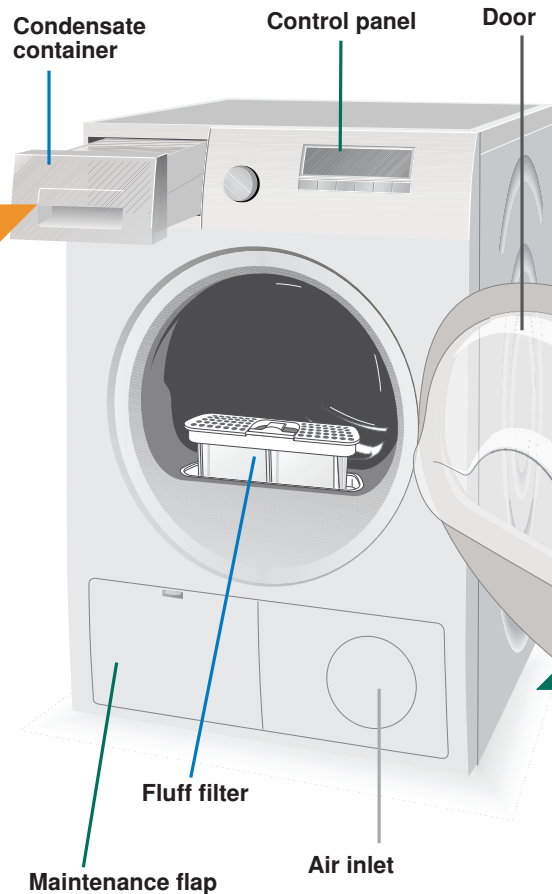
Drying



1

2

3



7



6

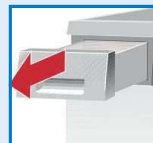
5

4

Empty the condensate container

Empty the container **after each** drying cycle.

1. Remove the container, holding it level.
2. Pour out the condensate.
3. Push the container back in until it clicks into place.



If (Condensate container) flashes in the display panel → *What to do if...*, page 11.

Clean fluff filter

Do not operate the dryer without a fluff filter or with a defective fluff filter. A clean fluff filter minimises energy consumption.

Clean the fluff filter **after** each drying cycle.

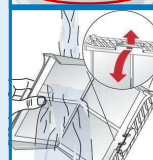
1. Open the door. Remove any fluff from the door/around the door and pull out the fluff filter.



2. Remove the fluff from the shaft of the fluff filter.



3. Open the fluff filter and remove the fluff (sweep your hand over the fluff filter). If the fluff filter is very dirty or blocked, rinse with warm water and dry thoroughly.



4. Close and reinsert the fluff filter.

Remove the laundry and switch off the dryer

End of the programme...

Interrupt the programme

1. Open the door or press the **Start/Pause** button; the drying cycle is interrupted.
2. Add or remove laundry and close the door.
3. If required, select a new programme and additional functions. Select the **Start/Pause** button. The remaining time is updated after a few minutes.



The drum and door may be hot!

Drying

Display panel and settings

Display panel (status indicators)



**(Fluff filter/
Heat exchanger)**

Clean the fluff filter → *page 4/11*
or clean the heat exchanger → *page 8*.



**(Condensate
container)**

Empty the condensate container → *page 4/11*.



**(Programme
sequence)**

These indicators show the programme progress in the next steps of the drying cycle:

- Drying;
- Iron Dry;
- Cupboard Dry;
- P- Programme pause → if required;
- End Programme end.



(Childproof lock)

You can lock the dryer to prevent the functions you have set from being changed inadvertently. To activate/deactivate **(Childproof lock)** start the programme and then press and hold the **Start/Pause** button for 5 seconds until a long acoustic signal is heard. The option activated/deactivated → **(Childproof lock)** indicator light on/off.



(Remaining time)

When a programme is selected, the anticipated drying time (remaining time) for the recommended load is displayed. While drying, the moisture sensors detect the actual load and correct the programme length. This is shown by jumps in the remaining time in the display panel.

Settings (indicators lights and buttons)



Selected option activated/deactivated → indicator light on/off.
See the separate **Energy-saving mode** instructions.



(Drying time)

Drying time, available only for timed programmes, can be selected from min. 0:20 h to max. 3:00 h, in 10-minute steps.



(Fine adjust)

The dryness levels (e.g. Cupboard Dry) can be increased in three levels. The laundry is made drier. Default = 0. Selectable values: 0, 1, 2, 3. After setting the level of the fine adjustment for a programme, it is also retained for other programmes, until **(Fine adjust)** is changed again.



(Finished in)

The time when the programme has to end can be set by selecting the **(Finished in)** time. The **(Finished in)** time can be selected in one-hour steps, up to a maximum of 24 hours. Select the **(Finished in)** button repeatedly until the required number of hours is displayed. Then press the **Start/Pause** button to activate the **(Finished in)** option. The programme ends after the selected number of hours. Several minutes after activating **(Finished in)** option the display switches off to save energy. To switch it on select any button, close/open the door or turn the programme selector.



Gentle Dry

Reduced temperature for delicate fabrics, e.g. polyacrylic, polyamide or elastane, with a longer drying time.



Wrinkle Guard+

After the programme finishes, the drum moves at regular intervals to prevent creases. Laundry remains loose and fluffy. The standard setting for each programme is 60 min. Automatic anti-crease function can be extended by up to 60 min.



Buzzer

For switching the buzzer on and off. **Buzzer** indicates program end if it is activated. Other sounds are not influenced by this option.

Notes on laundry ...



Labelling of fabrics

Follow the manufacturer's care instructions.

- Suitable for tumble drying.
- Dry at normal temperature.
- Dry at low temperature → in addition, select **Gentle Dry**.
- Do not tumble dry.



Do not tumble dry the following fabrics:

- Non-breathable fabrics (e.g. rubber-coated).
- Delicate materials (silk, curtains made from synthetic material) → these may crease.
- Oil-stained laundry.



Drying tips

- To ensure a consistent drying result, sort the laundry by fabric type and drying programme.
- Always dry very small fabrics (e.g. baby socks) together with large items of laundry (e.g. towels).
- Close zips, hooks and eyelets, and button up covers. Tie cloth belts, apron strings, etc. together or use a laundry bag.
- Do not over-dry easy-care laundry → risk of creasing. Allow laundry to finish drying in the air.
- Do not dry woollens in the dryer. They may, however, be refreshed in the dryer → *page 7*, **Wool finish** programme (*depending on model*).
- Do not iron laundry immediately after drying; fold items up and leave for a while → residual moisture will then be distributed evenly.
- Knitted fabrics (e.g. T-shirts, jerseys) often shrink slightly the first time they are tumble-dried. → Do not use the **Cupboard Dry Extra** programme.
- Starched laundry is not always suitable for dryers → starch leaves behind a coating that reduces the drying effect.
- When washing laundry that is to be tumble dried afterwards, use the correct amount of fabric softener as specified in the manufacturer's instructions.
- For pre-dried, multi-layered fabrics or small, individual items of laundry, use the timed programme. Also suitable for subsequent drying.

Environmental protection / Energy-saving tips

- Before drying, spin the laundry in the washing machine → higher spin speeds minimise the drying time and reduce energy consumption.
- Use the maximum recommended capacity, but do not exceed it → *Programme overview, page 7*.
- Make sure the room is well ventilated during drying.
- Clean the fluff filter after every drying cycle → *Clean the fluff filter, page 4/11*.
- Do not cover or seal the air inlet on the dryer.

Programme overview

see also page 6.

Sort the laundry according to type of textile and fabric. Fabrics must be suitable for tumble drying.

After drying, laundry is to be ...	ironed	lightly ironed	not ironed	mangled
PROGRAMMES				
TEXTILE TYPE AND INFORMATION				
Cottons	max. 8 kg	Hard-wearing fabrics, boil-proof fabrics made of cotton or linen.		
Synthetics	max. 3.5 kg	Non-iron laundry made of synthetic fibres and mixed fabric, easy-care cotton.		
Iron Dry		The condition of the laundry means it is suitable for ironing (iron clothes in order to avoid creases).		
Cupboard Dry		Single-layered laundry.		
Cupboard Dry Extra		Laundry with thick, multi-layered parts.		
Outdoor	max. 1.5 kg	Fabrics with membrane coating, water-repellent fabrics, functional clothing, fleece fabrics (dry jackets/trousers with removable internal lining separately).		
Hygiene	max. 6 kg	Cotton fabrics for drying in higher temperatures to keep them more hygienic.		
Mix	max. 3 kg	Mixed items of laundry made of cotton and synthetics (Mix).		
Warm	max. 3 kg	Pre-dried, multi-layered, sensitive fabrics made of acrylic fibres, or separate small items of laundry. Also for subsequent drying.		
Shirts 15	max. 1 kg	For optimal drying result dry a maximum of 5 business shirts together. After drying, iron clothes or hang them out and leave for a while. The remaining moisture will be distributed evenly.		
Super 40	max. 2 kg	Laundry made of synthetic fibres, cotton or blended fabrics (for example) that needs to be dried quickly. The values may differ from the those specified depending on the type of fabric, mixture of laundry to be dried, residual moisture in the fabric and loading capacity.		
Down	max. 1.5 kg	Garments with down feather fillings, pillows and blankets. By non quilt loads - please add just 1 piece per drying.		
Lingerie	max. 1 kg	Lingerie made of synthetic fibres, cotton or blended fabric.		
Wool in basket	max. 1.5 kg	Use with separate basket only. See description of "Woolens basket."		

*Dryness levels can be selected individually → Cupboard Dry Extra, Cupboard Dry and Iron Dry (depending on the model)
Degree of dryness can be finely adjusted; multi-layered textiles require a longer drying time than single-layered items of clothing. Recommendation: Dry separately.

9608 / 9001243 146



BSH Hausgeräte GmbH
Carl-Wery-Strabe 34
81739 München/GERMANY

WT46B201IN

Manufactured by BSH Hausgeräte GmbH under Trademark License of Siemens AG

Care and cleaning



Only when switched off!

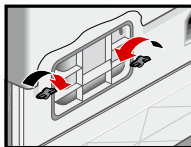
Dryer housing, control panel

- Wipe clean with a soft, damp cloth.
- Do not clean with a water jet.
- Remove detergent and cleaning agent residue immediately.
- During drying, water may occasionally accumulate between the window and the seal. This does not affect the proper operation of your dryer.

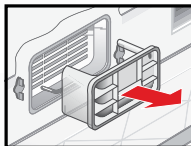
Heat exchanger

The heat exchanger requires cleaning once a month, however this varies depending on how frequently the dryer is used. Allow the dryer to cool down and place an absorbent cloth under the maintenance flap. Residual water may escape.

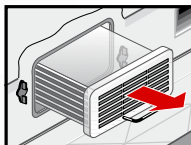
1. Unlock the maintenance flap and open completely.
2. Turn both locking levers towards each another.




3. Pull out the cap.

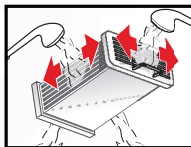


4. Remove the heat exchanger.



 Take care not to damage the heat exchanger. When cleaning, use water only. Do not use hard or sharp-edged objects.

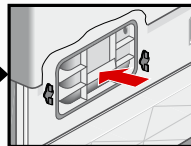
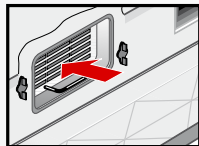
5. Rinse the heat exchanger and the cap on all sides with a jet of water to completely remove all of the fluff.



6. Remove any fluff from the seals on the dryer and heat exchanger.

7. Allow to drip dry fully.

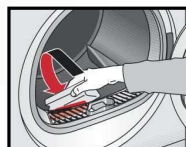
8. First insert the heat exchanger, then the cap.
9. Turn back both locking levers and close the maintenance flap until it locks closed.




Moisture sensors

The dryer is equipped with stainless steel moisture sensors. Moisture sensors measure the moisture level of the laundry. After sustained, repeated operation, a fine layer of limescale may form on the moisture sensors.

1. Open the door.
2. Clean the moisture sensors with a damp sponge which has a rough surface.



 Do not use steel wool or abrasive agents!

Installation

- Scope of delivery: dryer, operating and installation instructions, basket for woollens (*depending on the model*).
- Check the dryer for transport damage.
- The dryer is very heavy. Do not attempt to lift it on your own.
- Be careful to avoid sharp edges.
- Do not lift the dryer by protruding parts (e.g. the door) - risk of breakage.
- Do not set up in a room that is susceptible to frost.
- Freezing water may cause damage.
- If in doubt, have the appliance connected by a specialist.

1. Setting up the dryer

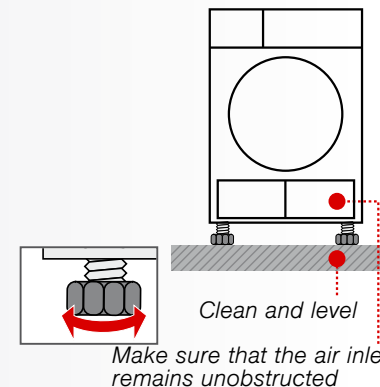
- The mains plug must always be accessible.
 - Ensure that the appliance is placed on a clean, level and firm surface.
 - Do not obstruct the air inlet on the dryer.
 - Keep the area around the dryer clean.
 - Level the dryer using the threaded feet and a spirit level.
- Never remove the threaded feet!




Take all accessory parts out of the drum. The drum must be empty.



Do not install the dryer behind a door or sliding door which could prevent or obstruct the dryer door from opening. This will prevent children from locking themselves in and risking their lives.



2. For mains connection, see Safety instructions → page 13.

- Connect to an AC earthed socket. If in doubt have the socket checked by a specialist.
 - The mains voltage and the voltage shown on the rating plate (→ page 10) must be the same.
 - The connected load and necessary fuse protection are specified on the rating plate.
-  Do not operate the dryer if there is a risk of frost.

Frost protection / Transport



Preparation

1. Empty the condensate container → page 4/11.
2. Select any programme using the programme selector.
3. Press the **Start/Pause** button → condensation is pumped into the container.
4. Wait several minutes or until the dryer stops, and then empty the condensate container again.
5. Turn the programme selector to **Off**.

Optional accessories (order from the after-sales service using the order number, depending on the model)

WZ
20160

Connection fittings for condensation outlet

The condensation is conveyed directly via a hose.

WZ
20500

Platform

For easier loading and unloading. The basket contained in the drawer can be used to carry the laundry.

WZ
20410

Washer-dryer stack connection set

The dryer can be placed on top of a suitable washing machine with the same width and depth to save space. The dryer **must** be fastened to the washing machine using this connection set. WZ 20400: with pull-out worktop.

Technical data

● Dimensions (DxWxH)	60 x 60 x 85 cm (height adjustable)
Weight	approx. 45 kg
Max. capacity	8 kg
Condensation container	4.2 l
Connection voltage	220 - 240V
Connected load	2600 W
Fuse protection	13 A
Ambient temperature	5-35°C
Product number	
Production number	Inside of door

The rating plate can be found on the back of the dryer.

- **Drum interior light** (depending on model): The drum lights up after the door is opened and after the programme starts, and switches off automatically.

Consumption rates (The value on the label is achieved at the maximum heat setting.)

Fabrics/programmes	Residual moisture in the fabrics after spinning		Drying time**	Energy consumption**
Cottons 8 kg			13 A	13 A
Cupboard Dry*	1400 U/min	(50%)	117 min	3.97 kWh
	1000 U/min	(60%)	137 min	4.63 kWh
	800 U/min	(70%)	158 min	5.29 kWh
Iron Dry*	1400 U/min	(50%)	91 min	2.86 kWh
	1000 U/min	(60%)	108 min	3.61 kWh
	800 U/min	(70%)	124 min	4.37 kWh
Synthetics 3.5 kg				
	Cupboard Dry*	800 U/min (40%)	46 min	1.42 kWh
		600 U/min (50%)	56 min	1.74 kWh

* Programme setting for testing in accordance with applicable standard EN61121.

** The values may differ from those specified, depending on the type of fabric, composition of laundry to be dried, residual moisture in the fabric, the degree of dryness that has been set, the amount of laundry being loaded and the environmental conditions.

Fabrics/programmes	Drying time	Annual energy consumption
Cottons 8 kg / 4 kg*		
Cupboard Dry***	106 min / cycle	561 kWh / year

*** Programme setting for testing and energy labelling in accordance with Directive 2010/30/EU.

After-sales service

If you cannot rectify the fault yourself (e.g. switching off/on) → *What to do if...*, page 11/12, please contact our after-sales service. We will always find an appropriate solution and avoid unnecessary visits by engineers.

The contact details of your local **after-sales service** can be found in the enclosed after-sales service directory.

– **GB** 0344 892 8999 (Calls charged at local or mobile rate.)

– **IE** 01450 2655 (0.03 € per minute at peak. Off peak 0.0088 € per minute.)

Please provide the after-sales service the product number (E no.) and the production number (FD) of the appliance.

E-Nr. _____ FD _____

Product number Production number

*You can find this information:
inside the door* / in the opened service flap*
and on the rear of the appliance.*

**depending on the model*

Trust the expertise of the manufacturer. Contact us for assistance. In this way, you can rest assured that the repair will be carried out by trained service technicians using original spare parts.

What to do if ...



Turn the programme selector to **Off** and remove the mains plug from the socket.


- The **Start/Pause** indicator light does not light up. Mains plug plugged in? Programme selected? Check the socket fuse.
- The display panel light and indicator lights (depending on model) go out and the **Start/Pause** indicator light flashes. Energy-saving mode is activated → see the separate *Energy-saving mode* instructions.
- The display panel switches off. The appliance goes into the sleep mode after activating (**Finished in**) option → page 5.
- The (**Condensate container**) indicator light flashes. Empty the condensate container → page 4. Press the **Start/Pause** button to reset the displayed indication and then press the **Start/Pause** button again to restart the appliance if necessary. If featured, check the hose for condensation outlet.
- (**Fluff filter/Heat exchanger**) indicator light flashes. Clean the fluff filter → page 4. Press the **Start/Pause** button to reset the displayed indication and then press the **Start/Pause** button again to restart the appliance if necessary. Clean the heat exchanger → page 8.
- Dryer does not start. **Start/Pause** button selected? Door closed? Ambient temperature greater than 5°C? The optimum ambient temperature for drying is between 5 °C and 35 °C.

What to do if ...

● Programme terminates shortly after starting.	Is the appliance loaded with the laundry? Load too small for selected programme?/Use timed programme → <i>page 6/7</i> . Loaded laundry dry?
● Water is leaking out.	Make sure the dryer is level. Clean the heat exchanger seal.
● The door opens by itself.	Push the door closed until you hear it engage.
● Creasing.	Laundry load exceeded? Remove articles of clothing immediately after the end of the programme, hang up and pull into shape. Unsuitable programme selected → <i>page 7</i> .
● Laundry is not dried correctly or is still too damp.	After the end of the programme, warm laundry feels damper than it actually is. Spread the laundry out and allow the heat to disperse. Finely adjust the dryness level – this extends the drying time but does not increase the temperature. Your laundry will become drier. Select a programme with a longer drying time or increase the drying level. This does not increase the temperature. Select a time programme for extended drying of laundry that is still damp. If you have exceeded the maximum load for the programme, the laundry may not be dried correctly. Clean the moisture sensor in the drum. A fine layer of limescale may adversely affect the performance of the sensors and your washing will not dry properly. Drying has been interrupted as a result of a power cut, because the condensate container is full or because the maximum drying time has been exceeded.
● Drying time too long.	Clean the fluff filter under running water → <i>page 4/11</i> . Insufficient supply of air → Ensure that air can circulate. Air inlet possibly blocked → Clear inlet → <i>page 9</i> . Ambient temperature higher than 35°C → Ventilate the room. The optimum ambient temperature for drying is between 5 °C and 35 °C. Outside of this range, the drying time may increase.
● One or more indicator lights are flashing.	Clean the fluff filter and heat exchanger → <i>page 4,8/11</i> . Check the installation conditions → <i>page 9</i> . Switch off, allow to cool, switch back on and restart the programme.
● Power failure.	Remove the laundry from the dryer immediately and spread out. This allows the heat to dissipate. Be careful as the door, the drum and the laundry may be hot.

Safety instructions



- Emergency** – Pull the appliance plug out of the socket immediately or disconnect the fuse.
- ONLY use the dryer...**
- in rooms inside the house.
 - to dry fabrics.
- The dryer must NEVER...**
- be used for purposes other than those described above.
 - be modified in terms of its technology or properties.
- Hazards**
- The dryer must not be used by children or persons who have not been instructed in its use.
 - Do not leave children unsupervised near the dryer.
 - Keep pets away from the dryer.
 - Remove all objects from pockets, and lighters in particular → **Risk of explosion**.
 - Do not lean or sit on the door → **Risk of tipping**.
- Installation**
- Secure loose cables → **Risk of tripping**.
 - Do not operate a dryer if there is a risk of frost.
- Mains connection**
- Connect the dryer to an AC earthed socket according to specifications, otherwise it cannot be guaranteed that the appliance is completely safe.
 - The cable cross-section must be sufficient.
 - Only use earth-leakage circuit breakers with the following symbol: 
 - The appliance plug and socket must be compatible.
 - Do not use multiple plugs/connectors and/or extension cables.
 - Do not touch or hold the appliance plug with wet hands → **Risk of electric shock**.
 - Never pull the appliance plug out of the socket by its cable.
 - Do not damage the mains lead → **Risk of electric shock**.
- Operation**
- Only load the drum with laundry.
 - Check the contents before you switch the dryer on.
 - Do not use the dryer if the laundry has been in contact with solvents, oil, wax, grease or paint (e.g. hair setting spray, nail polish remover, stain remover, cleaning solvent, etc.) → **fire/explosion hazard**.
 - The tumble dryer is not to be used if industrial chemicals have been used for cleaning.
 - Dust (e.g. coal dust, flour) poses a danger: do not use the dryer → **explosion hazard**.
 - Do not turn off the dryer until the drying process ends, unless the laundry will be removed quickly and spread out, so that the heat can dissipate.
 - Do not put laundry containing foamed material/rubber in the dryer → elastic material may be destroyed and the dryer may be damaged due to possible deformation of the foamed material.
 - When cleaning the fluff filter, make sure that no foreign material (down or filling material) gets into the air duct opening. If necessary, clean the drum beforehand with a vacuum cleaner. If foreign material should still get into the air duct → call the after-sales service → **Risk of fire/explosion**.
 - Light things, such as long hair, may be sucked into the air inlet of the dryer → **Risk of injury**.
 - Final part of a tumble dryer cycle occurs without heat (cool down cycle), to ensure that the items are left at a temperature that ensures that the items will not be damaged.
 - Switch off the dryer once the programme has ended.
 - The exterior of the appliance's rear panel becomes very hot during operation. Never touch the hot surface of the appliance's rear panel. Keep children away from the appliance → **Risk of burns!**
 - The water from condensation is not drinking water and may be contaminated with fluff.
- Defect**
- Do not use the dryer if it is defective or if you suspect that it is.
 - Repairs must only be carried out by the after-sales service.
 - Do not use the dryer if the mains cable is defective. To avoid danger, only have the defective mains cable replaced by the after-sales service.
- Spare parts**
- For safety reasons, you must only use genuine spare parts and accessories.
- Disposal**
- Pull out the appliance plug, **then** cut off the mains cable from the appliance.
 - Dispose of the appliance at a municipal waste disposal site.
 - Packaging: Keep all packaging out of reach of babies and children → **Risk of suffocation**.
 - All materials are environmentally sound and can be reused.
 - Dispose of them in an environmentally-responsible manner.



SIEMENS

Tumble dryer

WT46B201IN

siemens-home.com/welcome

en Instructions for installation and use



Observe the safety instructions on page 13.



Read these instructions and the separate **Energy-saving mode** instructions before operating the dryer.

Register
your
product
online