



SIEMENS



# Washing machine

WM...

[siemens-home.bsh-group.com/welcome](https://siemens-home.bsh-group.com/welcome)

en Instruction Manual and Installation Instructions

Register  
your  
product  
online

## Your new washing machine

You have chosen a Bosch washing machine.

Please take a few minutes to read and become familiar with the advantages of your washing machine.

To meet the high quality demands required by Bosch, every washing machine that leaves our factory is carefully checked to ensure that it functions correctly and is in perfect condition.

For more information on our products, accessories, replacement parts and services, see our website [www.bosch-home.com](http://www.bosch-home.com) or contact our after-sales service centres.

If the operating and installation instructions describe different models, any differences will be pointed out at the relevant points in the text.



Read these operating and installation instructions before switching on the washing machine.

## Display rules

### **Warning!**

This combination of symbol and signal word indicates a possibly dangerous situation. Not heeding the warning can cause death or injuries.

### **Caution!**

This signal word indicates a possibly dangerous situation. Not heeding the caution can cause property and/or environmental damage.

### **Note/tip**

Information about the optimum use of the appliance/any other useful information.

### **1. 2. 3. / a) b) c)**

The steps are represented by numbers or letters.

■ / -

Lists are represented by a small box or a dash.

# Contents

	<b>Intended use</b> . . . . .	4
--	-------------------------------	---

	<b>Safety instructions</b> . . . . .	5
--	--------------------------------------	---

	Children/people/pets . . . . .	5
	Installation . . . . .	6
	Operation . . . . .	9
	Cleaning/Maintenance . . . . .	10

	<b>Environmental protection</b> . . . . .	11
--	---	----

	Packaging/used appliance . . . . .	11
	Tips on economical use . . . . .	11

	<b>Positioning and connecting</b> . . . . .	12
--	---	----

	Included with the appliance . . . . .	12
	Safety instructions . . . . .	13
	Installation surface . . . . .	13
	Installation on a base or a wooden joist floor . . . . .	13
	Installation on a platform with drawer . . . . .	13
	Installing the appliance in a kitchenette . . . . .	14
	Removing the transport locks . . . . .	14
	Hose and cable lengths . . . . .	14
	Water inlet . . . . .	15
	Water outlet . . . . .	16
	Levelling . . . . .	16
	Electrical connection . . . . .	17
	Before using the appliance for the first time . . . . .	17
	Transportation . . . . .	18

	<b>Getting to know the appliance</b> . . . . .	19
--	--	----

	Washing machine . . . . .	19
	Controls . . . . .	20

	<b>Laundry</b> . . . . .	22
--	--------------------------	----

	Prepare the laundry . . . . .	22
	Sorting laundry . . . . .	22
	Starching . . . . .	23
	Dyeing/bleaching . . . . .	23
	Soaking . . . . .	23

	<b>Detergent</b> . . . . .	23
---	----------------------------	----

	Correct selection of detergent . . . . .	23
	Saving energy and detergent . . . . .	24

	<b>Programme default settings</b> . . . . .	24
---	---	----








	Temperature . . . . .	24
	Spin speed . . . . .	24
	Ready in time . . . . .	25
	Memory programme . . . . .	25

	<b>Additional programme settings</b> . . . . .	26
---	--	----

	SpeedPerfect . . . . .	26
	EcoPerfect . . . . .	26
	Water&Rinse+ . . . . .	26
	Prewash . . . . .	26
	Easy-Iron . . . . .	26
	Rinse hold . . . . .	26
	Stains choice . . . . .	27

	<b>Operating the appliance</b> . . . . .	27
---	--	----

	Preparing the washing machine . . . . .	27
	Switching on the appliance/selecting a programme . . . . .	27
	Change the programme default settings . . . . .	28
	Select additional programme settings . . . . .	28
	Placing laundry into the drum . . . . .	28
	Measure and add detergent and care products . . . . .	28
	Start the programme . . . . .	29
	Childlock /operation lock . . . . .	30
	Adding laundry . . . . .	30
	Changing the programme . . . . .	31
	Cancel the programme . . . . .	31
	Programme end during rinse hold . . . . .	31
	Programme end . . . . .	31
	Removing laundry/switching off the appliance . . . . .	31

 <b>Appliance settings</b> . . . . .	32
Activating the setting mode . . . . .	32
Changing the signal volume . . . . .	32
Changing the brightness of the touch display . . . . .	32
Select/deselect the memory function for drum care . . . . .	32
Exiting setting mode . . . . .	32
 <b>Sensors</b> . . . . .	33
Automatic load sensing . . . . .	33
Unbalanced load detection system . . . . .	33
VoltCheck . . . . .	33
 <b>Cleaning and maintenance</b> . . . . .	33
Machine housing/control panel . . . . .	33
Drum . . . . .	34
Descaling . . . . .	34
The drain pump is blocked, emergency draining . . . . .	34
The drain hose at the siphon is blocked . . . . .	35
Filter in the water supply blocked . . . . .	35
 <b>Faults and what to do about them.</b> . . . . .	36
Emergency release . . . . .	36
Information on the display panel . . . . .	36
Faults and what to do about them. . . . .	38
 <b>After-sales service</b> . . . . .	40
 <b>Technical data</b> . . . . .	40
 <b>Aqua-Stop warranty</b> . . . . .	41

---

## Intended use

- This appliance is intended for private domestic use only.
- Do not install or operate this appliance anywhere that is liable to experience frost and/or outdoor conditions. There is a risk that the appliance will be damaged if residual water in it freezes. If hoses freeze up, they may crack/burst.
- This appliance must only be used for washing domestic laundry, consisting of machine-washable items and hand-washable woollens (see label on item). Using the appliance for any other purpose is outside of the scope of its intended application and is forbidden.
- This appliance is suitable for operation with mains water and commercially available detergents and care products (must be suitable for use in washing machines).
- This appliance is intended for use up to a maximum height of 4000 metres above sea level.

### **Before you switch on the appliance:**

Check that there is no visible damage to the appliance. Do not operate the appliance if it is damaged. Should you have any problems, please contact your specialist dealer or our customer service.

Read and follow the operating and installation instructions and all other information provided with this appliance.

Retain the documents for subsequent use or for subsequent owners.

## Safety instructions

The following safety information and warnings are provided to protect you from injury and to prevent material damage to your surroundings.

It is nevertheless important to take the necessary precautions and to proceed with care when installing, maintaining, cleaning and operating the appliance.

### Children/people/pets

#### **Warning** **Risk of death!**

Children and other people who are unable to assess the risks involved when using the appliance may injure themselves or may find themselves in life-threatening situations. Therefore please note:

- The appliance may be used by children over the age of 8 years and by persons with reduced physical, sensory or mental capacity or by persons with a lack of experience or knowledge as long as they are supervised or have received instruction on how to use the appliance safely and they have understood the potential risks of using the appliance.

- Children must not play with this appliance.
- Do not allow children to clean or maintain this appliance unsupervised.
- Keep children under 3 years and pets away from this appliance.
- Do not leave the appliance unattended when children or other people who are unable to assess the risks are in the vicinity.

#### **Warning** **Risk of death!**

Children may lock themselves inside appliances and find themselves in a life-threatening situation.

- Do not position the appliance behind a door, as this may obstruct the appliance door or prevent it from opening completely.
- Once an appliance has reached the end of its life, pull the mains plug from the socket **before** severing the mains cable, and then destroy the lock on the appliance door.

**⚠ Warning**

**Risk of suffocation!**

If allowed to play with the packaging/plastic film or packing components, children may become caught in these or pull them over their heads and suffocate.

Keep packaging, plastic film and packing components away from children.

**⚠ Warning**

**Risk of poisoning!**

Detergents and care products may result in poisoning if consumed.

If accidentally swallowed, seek medical advice. Keep detergents and care products out of the reach of children.

**⚠ Warning**

**Risk of burns!**

When washing at high temperatures, the glass in the appliance door becomes hot. Stop children from touching the appliance door when it is hot.

**⚠ Warning**

**Eye/skin irritation!**

Contact with detergents or care products may cause eye/skin irritation.

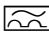
Rinse eyes/skin thoroughly if they/it come(s) into contact with detergents or care products. Keep detergents and care products out of the reach of children.

## Installation

**⚠ Warning**

**Risk of electric shock/fire/  
material damage/damage to  
the appliance!**

If the appliance is not installed properly, this may lead to a dangerous situation. Make sure that:

- The mains voltage on your power socket matches the rated voltage specified on the appliance (identification plate). The connected loads and the required fuse protection are specified on the identification plate.
- The appliance is only connected to a source of alternating current via a nationally recognized and grounded outlet that has been correctly installed.
- The mains plug and the grounded socket match and the earthing system has been correctly installed.
- The cross section of the cable is sufficiently large enough.
- The mains plug is accessible at all times.
- If using a residual current circuit breaker, only use one that bears the following mark: . The presence of this mark is the only way to be sure that it fulfils all the applicable regulations.

**⚠ Warning****Risk of electric shock/fire/  
material damage/damage to  
the appliance!**

If the appliance's mains cable is altered or damaged, this may result in electric shock, short circuiting or fire due to overheating.

The mains cable must not be kinked, crushed or altered, and must not come into contact with any heat sources.

**⚠ Warning****Risk of fire/material damage/  
damage to the appliance!**

The use of extension cords or power strips may result in fire due to overheating or short circuiting.

Connect the appliance directly to an earthed socket that has been correctly installed. Do not use extension cords, power strips or multi-way couplers.

**⚠ Warning****Risk of injury/material  
damage/damage to the  
appliance!**

- The appliance may vibrate or move when in operation, potentially resulting in injury or material damage.

Place the appliance on a clean, even, solid surface and, using a spirit level to guide you, level it with the screw-in feet.

- If you take hold of any of the appliance's protruding parts (e.g. the appliance door) in order to lift or move it, these parts may break off and cause injury.

Do not take hold of any of the appliance's protruding parts in order to move the appliance.

**⚠ Warning****Risk of injury!**

- The appliance is very heavy. Lifting it may result in injury. Do not lift the appliance on your own.
- The appliance has sharp edges on which you could cut your hands. Do not take hold of the appliance by its sharp edges. Wear protective gloves to lift it.
- If the hoses and mains cables are not correctly routed, they may constitute a tripping hazard, which may result in injury. Route hoses and cables such that they do not constitute a tripping hazard.

## Caution!

### Material damage/damage to the appliance

- If the water pressure is too high or too low, the appliance may not be able to operate properly, and it may also result in material damage or damage to the appliance.  
Make sure that the water pressure in the water supply facility is at least 100 kPa (1 bar), and does not exceed 1000 kPa (10 bar).
- If the water hoses are altered or damaged, this may result in material damage or damage to the appliance. The water hoses must not be kinked, crushed, altered or severed.
- The use of hoses supplied by other brands to connect to the water supply may result in material damage or damage to the appliance. Use the hoses supplied with the appliance or genuine spare part hoses only.
- The appliance is secured for transportation by transport locking devices. If the transport locking devices are not removed before the appliance is operated, this may result in damage to the appliance.  
It is important to completely remove all transport locking devices before using the appliance for the first time. Make sure that you retain these transport locking devices separately. It is important to refit the transport locking devices if the appliance is to be transported, in order to prevent the appliance from being damaged in transit.



## Operation

### **Warning**

#### **Risk of explosions/fire!**

Laundry that has been pretreated with cleaning agents that contain solvents, e.g. stain remover/cleaning solvent, may cause an explosion in the drum. Rinse the laundry thoroughly with water before washing it in the machine.

### **Warning**

#### **Risk of poisoning!**

Poisonous fumes may be given off by cleaning agents that contain solvents, e.g. cleaning solvent.

Do not use cleaning agents that contain solvents.

### **Warning**

#### **Risk of injury!**

- If you support your weight/sit on the appliance door when it is open, the appliance may tip over, which may result in injury.

Do not support your weight on the appliance door when it is open.

- If you climb onto the appliance, the worktop may break, which may result in injury.

Do not climb onto the appliance.

- If you reach into the drum while it is still rotating, you risk injuring your hands. Wait until the drum has stopped rotating.

### **Warning**

#### **Risk of scalding!**

When washing at high temperatures, there is a risk of scalding if you come into contact with hot detergent solution (e.g. when draining hot detergent solution into a washbasin).

Do not reach into the hot detergent solution.

### **Warning**

#### **Eye/skin irritation!**

Detergent and care products may spray out if the detergent drawer is opened while the appliance is in operation. Rinse eyes/skin thoroughly if they/it come(s) into contact with detergents or care products. If accidentally swallowed, seek medical advice.

## Caution!

### Material damage/damage to the appliance

- If the amount of laundry in the appliance exceeds its maximum load capacity, it may not be able to operate properly, or this may result in material damage or damage to the appliance.  
Do not exceed the maximum load capacity of dry laundry. Make sure you comply with the maximum load capacities specified for each of the programs.
- If you pour the wrong quantity of detergent or cleaning agent into the appliance, this may result in material damage or damage to the appliance.  
Use detergents/care products/cleaning agents and softeners in accordance with the manufacturers' instructions.

## Cleaning/Maintenance

### **Warning** **Risk of death!**

The appliance is powered by electricity. There is a risk of electric shock if you come into contact with live components. Therefore please note:

- Switch off the appliance. Disconnect the appliance from the power supply (pull out the plug).

- Never take hold of the mains plug with wet hands.
- When removing the mains plug from the socket, always take hold of the plug itself and never the mains cable, otherwise this may damage the mains cable.
- Do not make any technical modifications to the appliance or its features.
- Repairs and any other work on the appliance must only be conducted by our customer service or by an electrician. The same applies for replacing the mains cable (when necessary).
- Spare mains cables can be ordered from our customer service.

### **Warning** **Risk of poisoning!**

Poisonous fumes may be given off by cleaning agents that contain solvents, e.g. cleaning solvent.  
Do not use cleaning agents that contain solvents.

### **Warning** **Risk of electric shock/material damage/damage to the appliance!**

If moisture penetrates the appliance, this may cause it to short circuit.  
Do not use a pressure washer or steam cleaner to clean your appliance.

**⚠ Warning****Risk of injury/material damage/damage to the appliance!**

The use of spare parts and accessories supplied by other brands is dangerous and may result in injury, material damage or damage to the appliance.

For safety reasons, use genuine spare parts and accessories only.

**Caution!****Material damage/damage to the appliance**

Cleaning agents and agents for pretreating laundry (e.g. stain removers, prewash sprays, etc.) may cause damage if they come into contact with the surfaces of the appliance. Therefore please note:

- Do not allow these agents to come into contact with the surfaces of the appliance.
- Clean the appliance with nothing but water and a soft, damp cloth.
- Remove any detergent, spray or other residues immediately.

**Environmental protection****Packaging/used appliance**

Dispose of packaging in an environmentally-responsible manner.

This appliance is labelled in accordance with European Directive 2012/19/EU concerning used electrical and electronic appliances (waste electrical and electronic equipment - WEEE).

The guideline determines the framework for the return and recycling of used appliances as applicable throughout the EU.

**Tips on economical use**

- Always utilise the maximum amount of washing for the particular programme.  
Overview of programmes → Supplementary sheet for the operating and installation instructions.
- Wash normally soiled laundry without prewash.
- For light and normal soiling in laundry, you can save energy and detergent. → *Page 24*
- The selectable temperatures apply to the care labels on the textiles. The temperatures in the machine may deviate from this so that you get the optimum mix of energy-saving and washing results.

■ **Information on energy and water consumption:**

The displays provide information about the relative level of energy and water consumption in the selected programmes.

The more display segments are visible, the higher the respective consumption.

This enables you to compare the consumption levels of the different programmes when choosing your programme settings and decide on an energy- and water-saving programme setting.



- Energy consumption
- Water consumption

■ **Energy-saving mode:** The touch display lighting goes out after a few minutes, the button flashes. Touch the touch display to activate the lighting. Energy-saving mode is not activated if a programme is running.

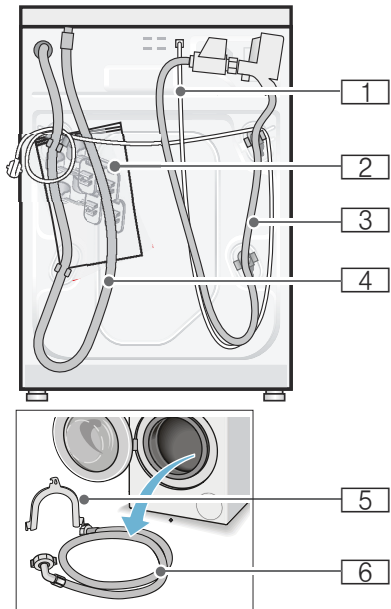
■ **Automatic switch off** (only before the programme starts or after the programme ends) If the appliance is not operated for a prolonged period, it automatically switches off to save energy. Press the main switch again to switch on the appliance.

■ If the washing will be dried in a dryer, select the spin speed according to the dryer manufacturer's instructions.

**Positioning and connecting**

**Included with the appliance**

**Note:** Check the machine for transport damage. Never use a damaged machine. If you have a complaint, please contact the retailer from whom you purchased the appliance, or our after-sales service.



- 1** Mains cable
- 2** Bag:
  - Installation and operating instructions
  - After-sales service location directory\*
  - Warranty\*
  - Cover caps for openings left after removing the transport locks
  - Wrench\*
- 3** Water supply hose on Aqua-Stop models
- 4** Water drain hose
- 5** Elbow for securing the water drain hose\*

- 6** Water supply hose on standard/Aqua-Secure models

\*depending on the model

**In addition**, a hose clamp ( 24 - 40 mm diameter, available from specialist dealers) is required to connect the water drain hose to a siphon.

### Useful tools

- Spirit level for levelling
- Wrench with:
  - WAF 13 for loosening the transport locks, and
  - WAF 17 for aligning the appliance feet

## Safety instructions

### **Warning** **Risk of injury!**

- The washing machine is very heavy. Be careful when lifting/transporting the washing machine.
- When the washing machine is lifted by its protruding parts (e.g. the washing machine door), the components may break off and cause injuries.  
Do not lift the washing machine by protruding parts.
- If the hose and mains cables are not routed properly, there is a risk of tripping and injury.  
Lay hoses and cables in such a way that there is no risk of tripping.

### **Caution!**

#### **Damage to the appliance**

Frozen hoses may rip/burst. Do not install the washing machine in areas exposed to frost or outdoors.

### **Caution!**

#### **Water damage**

The connection points for the water supply hose and water drain hose are under high water pressure. To prevent

leaks and water damage, you must follow the instructions in this section.

### Notes

- In addition to the safety information listed here, the local water and electricity supplier may have special requirements.
- If in doubt, have the appliance connected by a specialist.

## Installation surface

**Note:** The washing machine be stable so that it does not move around.

- The installation surface must be firm and level.
- Soft floors/floor coverings are not suitable.

## Installation on a base or a wooden joist floor

### **Caution!**

#### **Damage to the appliance**

The washing machine may "wander" and tip/topple from the base when spinning.

The feet of the appliance must be secured with holding brackets. Order no. WMZ 2200, WX 9756, Z 7080X0

**Note:** On wooden joist floors, install the washing machine:

- In a corner, if possible,
- On a water-resistant wooden board (min. 30 mm thick) which is screwed tightly to the floor.

## Installation on a platform with drawer

Platform order no.: WMZ 20490, WZ 20490, WZ 20510, WZ 20520

## Installing the appliance in a kitchenette

### **Warning** **Danger of death!**

There is a risk of electric shock if you touch live components.  
Do not remove the appliance covering plate.

### Notes

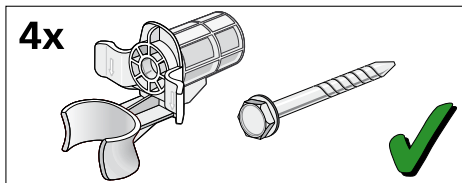
- Recess width of 60 cm required.
- Only install the washing machine underneath a continuous worktop that is securely connected to adjacent cabinets.

## Removing the transport locks

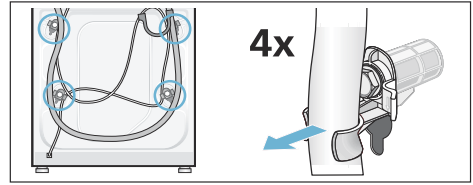
### **Caution!** **Damage to the appliance**

- The machine is secured for transportation using transport locks. If the transport locks are not removed, the drum, for example, may become damaged when the machine is operated. Before using the appliance for the first time, make sure that you completely remove all four transport locks. Keep the locks in a safe place.
- To prevent transport damage from occurring if the appliance is moved at a later date, you must refit the transport locks before transporting the appliance.

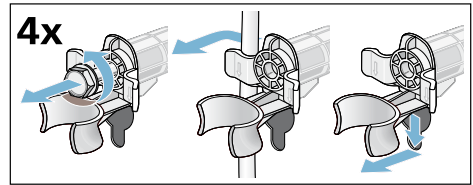
**Note:** Keep the screws and sleeves in a safe place.



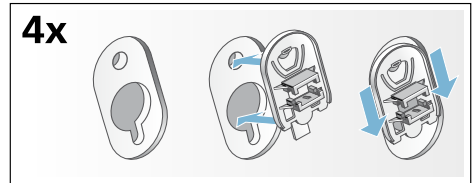
1. Take the hoses out of the holders.



2. Unscrew and remove all four transport brace screws. Remove the sleeves. To do this, remove the mains cable from the holders.

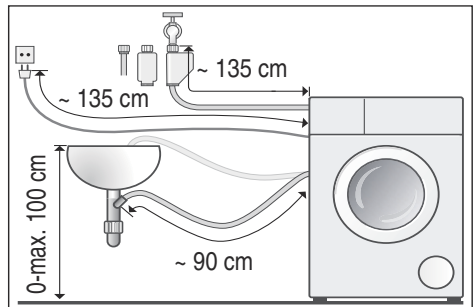


3. Fit the covers. Lock the covers firmly in place by applying pressure to the snap-in hooks.

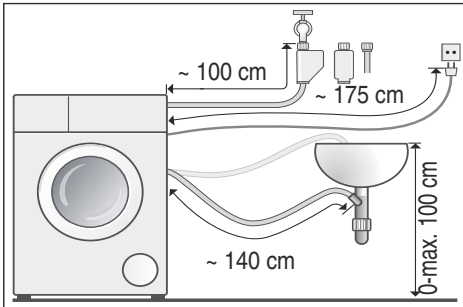


## Hose and cable lengths

- Left-hand connection



- Right-hand connection



**Tip:** The following are available from specialist dealers/the after-sales service:

- An extension for Aqua-Stop or cold water supply hose (approx. 2.50 m); order no. WMZ2380, WZ10130, CZ11350, Z7070X0
- A longer supply hose (approx. 2.20 m) for standard model

## Water inlet

### **Warning** **Danger of death!**

There is a risk of electric shock if you touch live components. Do not immerse the Aqua-Stop safety valve in water (it contains an electric valve).

Observe the following when connecting the machine:

### Notes

- Only operate the washing machine using cold mains water.
- Do not connect the machine to the mixer tap of an unpressurised hot-water boiler.
- Do not use a used supply hose. Only use the supply hose supplied or one that was purchased from an authorised specialist retailer.

- Do not bend, squash, modify or cut through the water supply hose (otherwise its strength is no longer guaranteed).
- Only tighten the screw connections by hand. If the screw connections are tightened too much with a tool (pliers), the thread may be damaged.

### Optimum water pressure in the supply network

**At least** 100 kPa (1 bar)

**Maximum** 1000 kPa (10 bar)

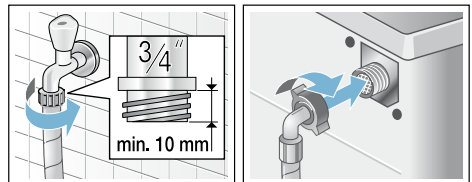
When the tap is open, the water flow is at least 8 l/min.

If the water pressure is higher than this, a pressure-reducing valve must be installed.

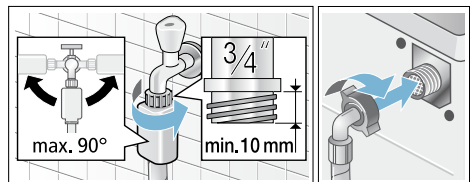
### Connection

Connect the water supply hose to the water tap ( $\frac{3}{4}$ " = 26.4 mm) and to the appliance (not necessary for Aqua-Stop models as this is permanently installed):

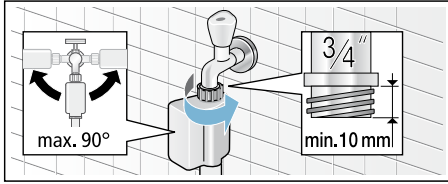
- **Model: Standard**



- **Model: Aqua-Secure**



■ Model: **Aqua-Stop**



**Note:** Open the water tap carefully, checking the leak tightness of the connection points. The screw connection is under mains water pressure.

## Water outlet

**⚠ Warning**  
**Risk of scalding!**

When you are washing at high temperatures, there is a risk of scalding if you come into contact with hot water (e.g. when draining hot water into a washbasin). Do not reach into the hot water.

**Caution!**  
**Water damage**

If the drain hose slips out of the washbasin or the connection point during draining due to high water pressure, any escaping water may cause water damage. Secure the drain hose so that it cannot slip out.

**Caution!**  
**Damage to the appliance/fabrics**

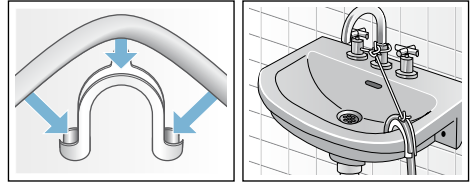
If the end of the drain hose is immersed in the drained water, water may be sucked back into the appliance and may damage the appliance/fabrics. Make sure that:

- The plug does not block drainage from the washbasin.
- The end of the drain hose is not immersed in the drained water.
- The water drains away quickly enough.

**Note:** Do not kink the water drain hose or put strain on it lengthways.

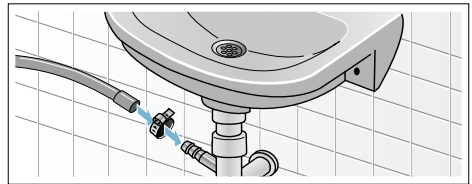
## Connection

■ **Drainage into a washbasin**

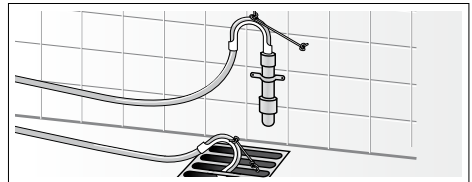


■ **Drainage into a siphon**

The connection point must be secured using a hose clamp with a diameter of 24 - 40 mm (available from specialist dealers).



■ **Drainage into a plastic pipe with rubber bushing or into a drainage pit**



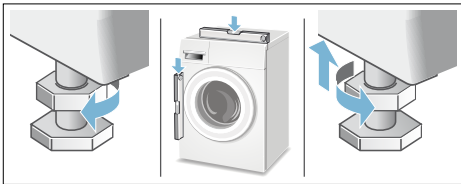
## Levelling

Level the appliance using a spirit level. Incorrect levelling may result in intense noise, vibrations and "wandering".

1. Loosen the lock nuts using a wrench, by turning it in a clockwise direction.



2. Check the alignment of the washing machine with a spirit level, and adjust it if necessary. Change the height by turning the appliance feet. All four appliance feet must stand firmly on the ground.
3. Tighten the lock nut against the housing.  
In doing so, hold the foot tight and do not adjust its height.  
The lock nuts on all four appliance feet must be screwed tightly against the housing.



## Electrical connection

### **⚠ Warning** **Danger of death!**


There is a risk of electric shock if you touch live components.

- Never touch or hold the mains plug with wet hands.
- Only pull out the mains cable by the plug and never by the cable, as this could damage it.
- Never unplug the mains plug during operation.

Observe the following information and ensure that:

#### Notes

- The mains voltage and voltage indicated on the washing machine (rating plate) are the same. The connected load and fuse required are specified on the rating plate.
- The washing machine is only connected to an alternating current via a properly installed earthed socket.

- The mains plug fits the socket.
- The cable cross-section is adequate.
- The earthing system is properly installed.
- The mains cable is only replaced by a qualified electrician (if this is necessary). Replacement mains cables are available from the after-sales service.
- No multiple plugs/couplings or extension cables are used.
- If an earth-leakage circuit breaker is used, only a type which displays this symbol is used: . Only this symbol guarantees compliance with the currently applicable regulations.
- The mains plug can be accessed at all times.
- The mains cable is not bent, squashed, modified, cut through, or in contact with heat sources.

## Before using the appliance for the first time

The washing machine was thoroughly tested before leaving the factory. To remove any water that may be left over from the test, run the first wash cycle **without** any laundry.

#### Notes

- The washing machine **must be correctly installed and connected**. From → *Page 12*
- Never use a machine if it is damaged. Inform the after-sales service.

#### Preparatory work:

1. Check the machine.
2. Remove the protective film from the control panel.
3. Plug in the mains plug.
4. Turn on the tap.

### Running the programme without laundry:

1. Switch on the appliance.
2. Close the door (do not load any laundry).
3. Set the **Drum Clean** 🌀 90 °C programme.
4. Open the detergent drawer.
5. Pour approximately 1 litre of water into compartment **II**.
6. Pour standard washing powder into compartment **II**.

**Note:** To prevent foaming, only use half the amount of detergent recommended by the detergent manufacturer. Do not use detergents intended for woollens or delicates.

7. Close the detergent drawer.
8. Press the ▶||| button.
9. Switch off the appliance at the end of the programme.

**Your washing machine is now ready to use.**

## Transportation

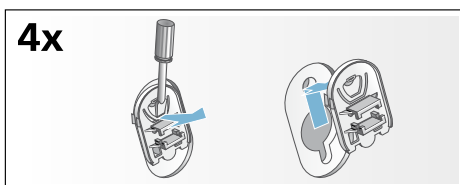
e.g. when moving home

### Preparatory work:

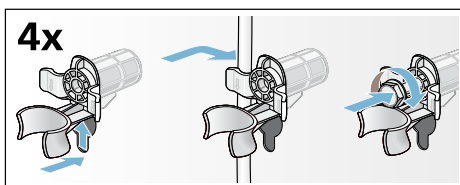
1. Turn off the water tap.
2. Reduce the water pressure in the supply hose.  
Maintenance – filter in the water supply → *Page 35*
3. Drain the remaining detergent solution.  
Maintenance – detergent solution pump blocked
4. Disconnect the washing machine from the mains.
5. Remove the hoses.

### Installing the transport locks:

1. Remove the covers and keep them in a safe place.  
Use a screwdriver if necessary.



2. Insert all four sleeves.  
Clip the mains cable securely in the holders. Insert and tighten the screws.



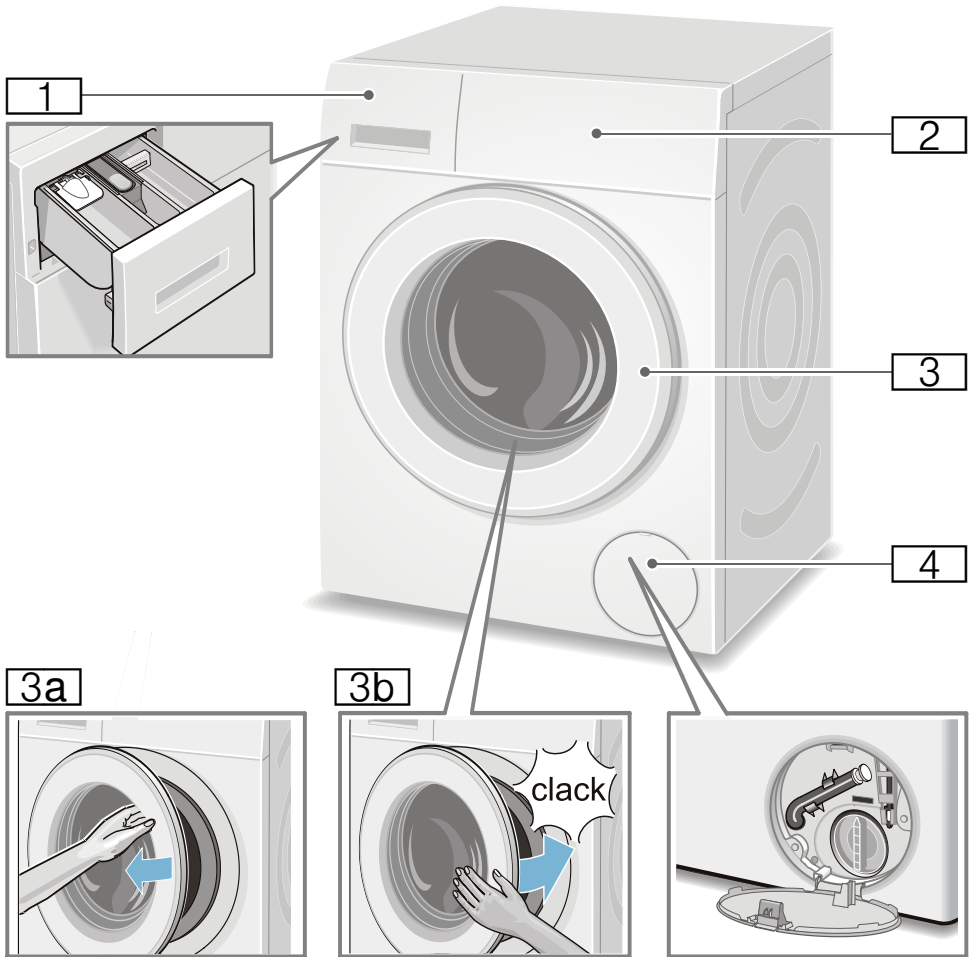
### Before switching on the appliance again:

#### Notes

- The transport braces **must** be removed.
- To prevent unused detergent from flowing straight into the drain during the next wash: Pour approx. 1 litre of water into compartment **II** and start the **Empty** 🌀 program.

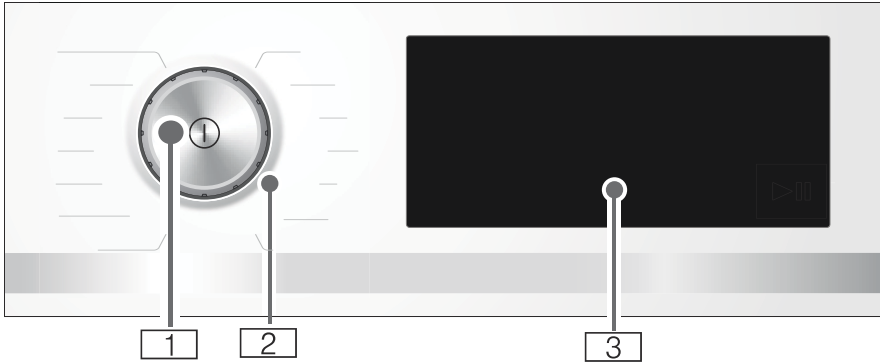
# Getting to know the appliance

## Washing machine



- 1** Detergent drawer → Page 28
- 2** Controls
- 3** Loading door with door handle
- 3a** Open the loading door
- 3b** Close the loading door
- 4** Service flap

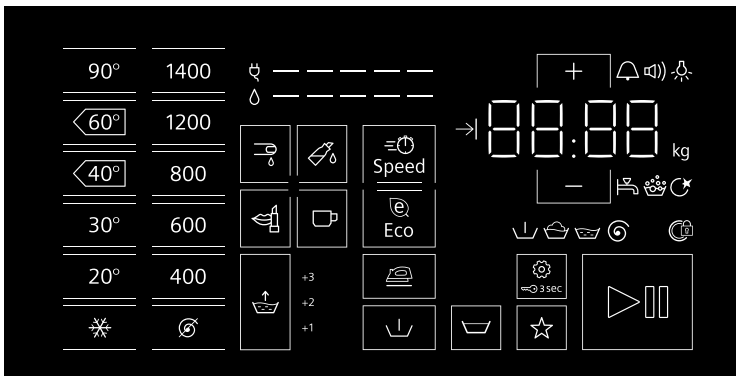
## Controls



- 1 Main switch**  
You can use the ⓘ button to switch the appliance on and off.
- 2 Programme selector**  
You can turn the programme selector in both directions (clockwise and anti-clockwise).

- 3 Touch display**  
This shows you the programme information and selection options for settings, and you can select the settings by touching the framed or underlined areas.

### Content\* of the touch display (\* depending on the model)



Indicators and buttons on the control panel	Display for settings	Setting
90°, <img alt="60°C icon" data-bbox="115 125 145 140"/>, <img alt="40°C icon" data-bbox="155 125 185 140"/>, 30°, 20°, * 1400*, 1200, 800, 600, 400, ∅		Temperature in °C; * = cold Spin speed; ∅ = no spin
<img alt="Stains choice icons" data-bbox="65 170 385 190"/>		Stains choice
Speed		SpeedPerfect
Eco		EcoPerfect
<img alt="Water&Rinse+ icon" data-bbox="65 245 95 265"/>	+1, +2, +3, off	Water&Rinse+; + additional rinse cycles
<img alt="Easy-Iron icon" data-bbox="65 270 95 290"/>		Easy-Iron
<img alt="Prewash icon" data-bbox="65 295 95 315"/>		Prewash
<img alt="Rinse Stop icon" data-bbox="65 320 95 340"/>		Rinse Stop = no final spin
<img alt="Childlock icon" data-bbox="65 345 95 365"/> 3 sec		Childlock / control panel lock
<img alt="Memory programme icon" data-bbox="65 370 95 390"/>		Memory programme
<img alt="Start/pause icon" data-bbox="65 395 105 415"/>		Start/pause
<img alt="Appliance settings icon" data-bbox="65 420 95 440"/>	<img alt="Appliance settings display icons" data-bbox="365 415 475 435"/>	Appliance settings: Information signal, operating signal, brightness of the touch display, memory function for drum care
+ , -	Change the settings <b>Note:</b> Where there are multi-level settings, pressing and holding +, - will scroll through all the settings automatically until the end. Touching it again will allow you to change the settings again.	
* Maximum spin speed depends on the appliance ** Depending on the model		

Other indicators	Information on
<img alt="Energy consumption icon" data-bbox="65 625 145 645"/> -----	Energy consumption
<img alt="Water consumption icon" data-bbox="65 650 145 670"/> -----	Water consumption
<img alt="Programme status icons" data-bbox="65 675 185 695"/>	Programme status: Pre-wash, wash, rinse, spin
<img alt="Door locked icon" data-bbox="65 700 95 720"/>	Door locked
<img alt="Tap off/water pressure too low icon" data-bbox="65 725 95 745"/>	Tap off/water pressure too low
<img alt="Foam detected icon" data-bbox="65 750 95 770"/>	Foam detected
⏱ : ⏱	Programme duration, e.g. 1:51; Ready in, e.g. ⌚ 8.5 h; recommended load, e.g. 8.0 kg; programme status, e.g. End

## Laundry

### Prepare the laundry

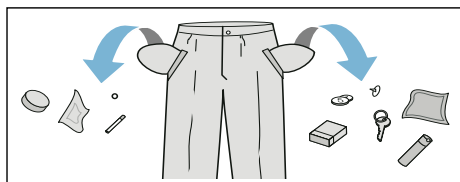
#### Caution!

#### Damage to the appliance/fabrics

Foreign objects (e.g. coins, paperclips, needles, nails) may damage the laundry or components in the washing machine.

You should therefore note the following tips when preparing your laundry:

- Empty any pockets.



- Look out for metal items (paperclips, etc.) and remove them.
- Wash delicates in a laundry bag (tights, underwired bras, etc.).
- Close any zips; button up any cover buttons.
- Brush sand out of pockets and collars.
- Remove curtain fittings or place curtains in a laundry bag.

### Sorting laundry

Sort your laundry according to the care instructions and manufacturer's information on the care labels, depending on:

- Type of fabric/fibre
- Colour

**Note:** Laundry can discolour or not be cleaned correctly. Wash white and coloured items separately. Wash new coloured items separately the first time you wash them.

- Soiling  
Wash laundry with the same level of soiling together.

Some examples of soiling levels can be found on → Page 24.

- **Light:** Do not prewash, select the **Speed** setting if necessary
- **Normal**
- **Heavy:** Load less laundry, select a program with prewash
- **Stains:** Remove/pretreat stains while they are fresh. Firstly, dab with soapy water; do not rub. Then wash the items of laundry with the appropriate program. Stubborn or dried-in stains can sometimes only be removed by washing several times.

- Symbols on the care labels

**Note:** The numbers in the symbols indicate the maximum washing temperature that may be used.



Suitable for normal washing process;

e.g. Cottons program



A gentle washing process is required;

e.g. Easy-Care program



An especially gentle washing process is required; e.g.

Delicate/Silk program




Suitable for washing by hand; e.g. Wool program



Do not machine wash.

## Starching

**Note:** Laundry should not be treated with fabric softener.




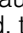
Liquid starch can be used to stiffen fabrics particularly in the Rinse and Cottons programmes. Measure starch into compartment  in accordance with the manufacturer's instructions (clean first if necessary).

## Dyeing/bleaching

Dye should only be used in normal household quantities. Salt may damage stainless steel. Always follow the dye manufacturer's instructions.

Do **not** use the washing machine to bleach clothes.

## Soaking

1. Switch on the appliance.
2. Select the  **Cottons 20 °C** program.
3. Pour soaking agent/detergent into compartment **II** in accordance with the manufacturer's instructions.
4. Press the  button.
5. After approx. 10 minutes, press the  button to pause the program.
6. Leave the laundry to soak for as long as required, then either press the  button again to continue the program or change the program.

### Notes

- Load laundry of the same colour.
- No additional detergent is required; the soaking solution is used for washing.



## Detergent

### Correct selection of detergent


The care label is crucial for selecting the correct detergent, temperature and treatment of the laundry. → See also [www.sartex.ch](http://www.sartex.ch)

If you visit [www.cleanright.eu](http://www.cleanright.eu), you will find further information on detergents, care products and cleaning agents for domestic use.

- **Standard detergent with optical brighteners**  
Suitable for boil-washable white laundry made from linen or cotton  
Programme: Cottons/  
cold - max. 90 °C
- **Detergent for colours without bleach or optical brighteners**  
Suitable for coloured laundry made from linen or cotton  
Programme: Cottons/  
cold - max. 60 °C
- **Detergent for colours/delicates without optical brighteners**  
Suitable for coloured laundry made from easy-care fibres, synthetic fibres  
Programme: Easy-Care/  
cold - max. 60 °C
- **Detergent for delicates**  
Suitable for delicate, fine fabrics, silk or viscose  
Programme: Delicate/Silk/  
cold - max. 40 °C
- **Detergent for woollens**  
Suitable for wool  
Wool programme/  
cold - max. 40 °C

## Saving energy and detergent

For light and normal soiling, you can save energy (lower washing temperature) and detergent.

Saving	Soiling/note
<p>Reduced temperature and detergent quantity as per the recommended dosage</p> 	<p><b>Light</b> No visible dirt or stains. Clothing has taken on some body odour, e.g.:</p> <ul style="list-style-type: none"> <li>■ Light summer/sports clothing (worn for a few hours)</li> <li>■ T-shirts, shirts, blouses (worn for up to one day)</li> <li>■ Guest bed linen and hand towels (used for one day)</li> </ul> <p><b>Normal</b> Visible dirt or a few light stains, e.g.:</p> <ul style="list-style-type: none"> <li>■ T-shirts, shirts, blouses (sweat soaked, worn a few times)</li> <li>■ Towels, bedding (used for up to one week)</li> </ul>
<p>Temperature as per the care label and detergent quantity as per the recommended dosage for heavy soiling</p>	<p><b>Heavy</b> Dirt and/or stains clearly visible, e.g. tea towels, baby items, work clothing</p>

**Note:** When measuring the amount of all detergents/additives/care products and cleaning agents, please always check the manufacturer's instructions and information. → Page 28

## P+ Programme default settings

The programme default settings are displayed and can be changed in the touch display after the programme is selected.

You can find an overview of all possible program settings on the supplementary sheet for the installation and operating instructions.

### Temperature

Depending on what stage the programme is in, you can change the set temperature before and during the programme.

The maximum temperature that can be set depends on the programme that has been selected.

### Spin speed

Depending on what stage the programme is in, you can change the spin speed (in rpm; revolutions per minute) before and during the programme.

**Setting ∅:** No spin; the water is only drained. The laundry stays wet inside the drum, e.g. for items that should not be spun.

The maximum speed that can be set depends on the model and the programme that has been selected.



## Ready in time



After selecting a programme, the programme duration is displayed, e.g. **1:51** (in h:min (hours:minutes)).

**Before the programme starts**, you can move the time at which the programme should be finished backwards, in increments of 30 minutes and up to a maximum of 24 h (h=hour).

**After the programme starts**, the selected time, e.g. **8.5 h** is displayed and counted down until the washing programme starts. The duration of the programme is then displayed.

**Note:** The programme duration is automatically adjusted when the programme is running. Changes to the programme default settings or programme settings, foam detection function, unbalanced load detection, the load or soiling may also change the programme duration.

**After the programme starts**, and while the selected time is counting down, you can change this as follows:

1. Touch the control panel .
2. Touch **+** or **-** to change the time.
3. And touch  again.

**After starting the programme**, while the programme is running, you can add or remove laundry if necessary.

→ Page 30

## Memory programme

☆

You can save a selected programme with your favourite settings here.

### To store:

1. Switch on the appliance.
2. Select a programme.
3. Change the settings and/or select additional settings.
4. Press and hold ☆ on the control panel for approx. three seconds.

The programme is saved if all of the settings flash briefly.

To use the saved programme, touch ☆ briefly after you switch on the appliance.

To change the saved programme, press and hold ☆ again for approx. three seconds after selecting the new settings.

## **P+** Additional programme settings

You can find an overview of all of the additional settings that can be selected depending on the programme on the printed supplement to the installation and operating instructions.

### SpeedPerfect

Speed

Washing in a shorter time while achieving a washing result that is consistent with, but uses more energy than, the selected programme, without the SpeedPerfect setting.

**Note:** Do not exceed the maximum load.

### EcoPerfect

Eco

Energy-optimised washing by reducing the temperature while achieving a washing result that is consistent with the selected programme, without the EcoPerfect setting.

### Water&Rinse+



#### Adjustment values:

+1	+ 1 rinse
+2	+ 2 rinses
+3	+ 3 rinses
off	Setting deselected

Higher water level and additional rinse cycles depending on the programme, longer programme duration for particularly sensitive skin and/or for areas with very soft water.

### Prewash



For heavily soiled laundry.

**Note:** Pour detergent into compartments **I** and **II**.

### Easy-Iron



Reduces creasing thanks to a special spin sequence followed by fluffing and reduced spin speed.

**Note:** The washing's residual moisture is increased.

### Rinse hold



If final spinning is not selected, the laundry will remain in the water after the final rinse.









You can select "Rinse Stop" to prevent creasing if the laundry will not be taken out of the washing machine immediately after the programme has ended.

To continue/end the programme  
→ Page 31

## Stains choice

There are four types of stain to choose from.

### Types of stain that can be selected:

	Blood
	Grease and oil
	Grass*
	Red wine*
	Coffee*
	Sweat*
	Tea*
	Cosmetics*
Off	Setting deselected

\* Depending on the model

Do not let stains dry. Remove solid substances beforehand.

### Select a programme with a stain type:

1. Put together a load of laundry as usual.
2. Select a programme.
3. Load the washing machine
4. Select a stain type (depending on the selected programme).
5. Start the programme.

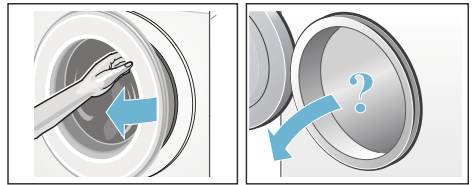
The washing machine adjusts the average washing temperature, drum movement and soaking time to the specific type of stain. Hot or cold water, gentle or intensive washing and long or short soaking ensure that the wash programme sequence is specially adapted to each type of stain. This means that stains are treated in the best possible way.

## Operating the appliance

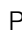
### Preparing the washing machine

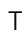
**Note:** The washing machine **must be correctly installed** and **connected**.  
From → *Page 12*

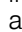
1. Connect the mains plug.
2. Turn on the water tap.
3. Open the door.
4. Check that the drum is completely drained. Drain if necessary.



### Switching on the appliance/ selecting a programme




Press the  button. The appliance is switched on.

The  **Cottons** programme set at the factory is then always displayed.

The current settings and programme information light up at full brightness and the display  flashes.

The settings that can be selected light up at half brightness.

### Notes

- Temporary flashing of the display  informs you to run the programme **Drum Clean**  or any other programme soon at a washing temperature of at least 60 °C.
- If the  3 sec display flashes, the childproof lock is active. You must deactivate this first before you can change settings or start the programme. → *Page 30*

In appliances with a **drum light**:

The drum is lit after switching on the appliance, after opening and closing the door and after starting a programme. The light switches off automatically.

### You can:

- Use this programme and load laundry. → *Page 28*
- Or select another programme. You can find an overview of all programmes on the printed supplement for the installation and operating instructions.
- Or change the programme default settings. → *Page 28*
- And/or select additional programme settings. → *Page 28*

## Change the programme default settings

To change the current settings, touch the button you require on the control panel and the relevant indicator will switch to full brightness.

You can change Finished in-time by touching + or -.

Programme default settings  
→ *Page 24*

## Select additional programme settings

By selecting additional settings, you can better adapt the washing process to your items of laundry.

To do this, touch the required control panel; the relevant display switches to full brightness.

Additional programme settings  
→ *Page 26*

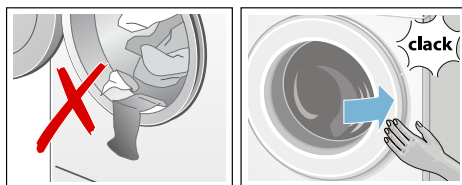
## Placing laundry into the drum

### **Warning** **Danger of death!**

Items of laundry pretreated with cleaning agents that contain solvents, e.g. stain remover/cleaning solvent, may cause an explosion after being loaded into the washing machine. Hand-rinse items of laundry thoroughly beforehand.

### Notes

- Mix items of laundry of varying sizes. Laundry items of different sizes distribute themselves better during the spin cycle. Individual items of laundry may lead to imbalances.
  - Observe the specified maximum load. Overfilling has a negative impact on the washing result and promotes creasing.
1. Place presorted items of laundry unfolded in the washing drum.
  2. Make sure that no items of laundry are trapped between the washing machine door and the rubber seal, and close the door.



## Measure and add detergent and care products

### **Caution!** **Damage to the appliance**

Cleaning agents and agents for pretreating laundry (e.g. stain removers, prewash sprays, etc.) may cause damage if they come into contact with the surfaces of the washing machine. Do not allow these agents to come into contact with the surfaces of the washing

machine. If necessary, immediately wipe away spray residue and other residues/droplets with a damp cloth.

### Dosing

Dose the detergents and care products according to:

- Water hardness (ask your water supply company)
- The manufacturer's instructions on the packaging
- The amount of laundry
- Soiling → Page 24

### Filling

#### **Warning**

#### **Eye/skin irritation!**

Detergent and care products may spray out if the detergent drawer is opened while the machine is in operation.

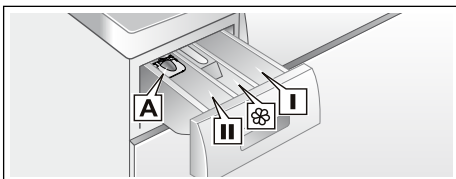
Open the drawer carefully.

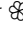
Rinse eyes/skin thoroughly if they come into contact with detergents or care products.

If swallowed accidentally, seek medical advice.

**Note:** Dilute viscous fabric softener and fabric conditioner with water to prevent blockages.

Pour the detergent and care products into the appropriate compartments:



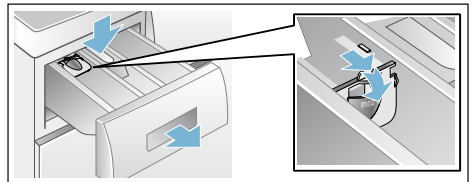
- Measuring aid **A** for liquid detergent
- Dispenser **II** Detergent for the main wash, water softener, bleach, stain remover
- Dispenser  Softener, starch, do not exceed **max.**
- Dispenser **I** Detergent for prewash

1. Pull out the detergent drawer as far as possible.
2. Add detergent and/or care products.
3. Close the detergent drawer.

### Measuring aid\* for liquid detergent

Position the measuring aid for dosing the correct amount of liquid detergent:

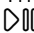
1. Pull out the detergent drawer. Press down the insert and fully remove the drawer.
2. Slide the measuring aid forwards, fold it down and click it into place.
3. Reinsert the drawer.




**Note:** Do not use the measuring aid for gel detergents and washing powder, or for programs with prewash or when the "Fertig in" (Ready in) time is selected.

### Start the programme

Touch the control panel .

The programme starts and the  display lights up permanently.


The door is locked and the corresponding display  lights up.

### During the programme, the current programme information is displayed:

- Finished in-time Finished in-time or, after the washing programme has started, the programme duration
- And the displays for the programme's progress light up.

Information on the following programme steps and settings, which can be changed during the programme sequence, light up at half brightness.


#### Note: Foam detection

If the  display also lights up, the washing machine has detected too much foam during the washing programme and automatically activated additional rinse cycles to remove the foam.


Add less detergent to the next washing cycle with the same load.

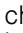
If you want to lock the programme to prevent it from being inadvertently adjusted, you can select the childproof lock as follows.

## Childlock /operation lock

 3 sec

You can lock the washing machine to prevent the functions you have set from being changed inadvertently in the control panel.

To **activate**/deactivate the **childproof lock**, touch and hold the control panel  3 sec for approx. three seconds. The display switches to full brightness.

If you turn the programme selector or touch the control panel while the childproof lock is active, the  3 sec indicator will flash briefly and a signal will sound. The programme runs through to the end unchanged.

## Notes


- To remove the laundry at the end of the programme, deactivate the childproof lock.
- The childproof lock can be activated no matter what status the appliance is in.
- The childproof lock remains active, even once the washing machine has been switched off.
- If the appliance is switched off while the programme is running and childproof lock is activated, the programme continues when the appliance is switched back on.


## Adding laundry

After starting the programme, you can add or remove laundry if necessary.

To do this, touch the control panel .

The indicator flashes. The machine is paused and checks whether a top-up is possible.

If the display  goes out, a top-up is possible. The door is then unlocked and can be opened.

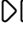

**To continue the programme. touch  again.** The programme continues automatically.

## Notes

- Do not leave the door open for too long when adding laundry as water from the laundry may leak out.
- For safety reasons, the door remains locked when the water level or temperature is high, or while the drum is turning, and it is not possible to add laundry during this time. Follow the information on the display panel.
- The load display is not active during reloading.




## Changing the programme

If you have started the wrong programme by mistake, you can change the programme as follows:


1. Touch the control panel .
2. Select another programme.
3. And touch  again. The new program starts from the beginning.

## Cancel the programme


For programs at high temperature:

1. Touch the control panel .
2. To cool the laundry: Select **Rinse** .
3. And touch  again.


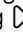

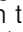
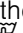
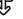
For programmes at low temperatures:

1. Touch .
2. Select **Spin**  or **Empty** .
3. And touch  again.



## Programme end during rinse hold



The  indicator flashes in the display panel, and the preset spin speed and remaining programme length are displayed for the selected programme.

Continue the programme by:

- Touching  on the control panel or
- Changing the spin speed and then touching  or
- Selecting the Easy-Iron  setting and then touching  or
- Turning the programme selector to **Empty**  and then touching .

## Programme end

**End** lights up in the display panel and the  and  displays are off.

**Note:** If the  display flashes, this informs you to run the **Drum Clean**  programme or any other programme at a washing temperature of at least 60 °C.

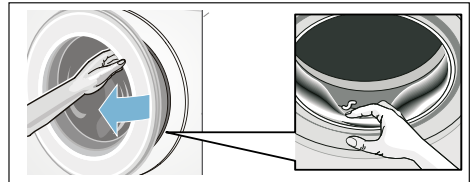
## Removing laundry/switching off the appliance

1. Open the loading door and remove the laundry.
2. Switch off the appliance.
3. Turn off the tap.

**Note:** Not required for AquaStop models.

### Notes

- Do not leave any items of laundry in the drum. They may shrink in the next wash or discolour another item.
- Remove any foreign objects from the drum and the rubber seal – risk of rusting.
- Wipe the rubber gasket dry.



- Leave the washing machine door and detergent drawer open so that any residual water can dry away.
- Always wait for the end of the programme, otherwise the appliance may still be locked. Then switch on the appliance and wait for it to unlock.



## Appliance settings

You can change the following settings in the control and display panel:

- The volume of the information signal (e.g. at the end of the programme),
- The volume of the operating signals,
- The brightness of the operating and display field,
- Select/deselect the memory function for drum care.

You will need to activate the setting mode in order to change these settings.

### Activating the setting mode

1. Switch on the appliance. The settings for the current programme are displayed.
2. Touch the control panel . The setting mode is activated and the displays for the information signals and the preset volume light up.

You can now change the settings:

### Changing the signal volume

To do this, touch  $+$  or  $-$  on the control panel until the required adjustment value for the volume of the **information signals** appears:

#### Adjustment values:

- 0 off
- 1 quiet
- 2 Medium
- 3 loud
- 4 very loud

Exit setting mode or:

Touch again. The display for the **operating signals** and the preset volume light up.

Touch  $+$  or  $-$  to change the adjustment value (as above).

Exit setting mode or:

### Changing the brightness of the touch display

Touch again. The display for the touch display's brightness and the preset brightness light up.

Change the adjustment value by touching  $+$  or  $-$ :

#### Adjustment values:

- 1 Not very bright
- 2 Normal level of brightness
- 3 Bright
- 4 Very bright

Exit setting mode or:

### Select/deselect the memory function for drum care

Touch again. The display for the memory function for cleaning the drum lights up.

Touch  $+$  or  $-$  to select (on) or deselect (off) the memory function.

### Exiting setting mode

#### To exit and save the settings:

- Wait for approx. 15 minutes or
- Touch one last time or
- Switch off the appliance. The selected settings will take effect the next time the washing machine is switched on.



## Sensors

### Automatic load sensing

The automatic load sensing function adapts the water consumption ideally to each programme depending on the type of fabric and the load.

### Unbalanced load detection system

The automatic unbalanced load detection system detects imbalances and ensures even distribution of the laundry by repeatedly starting and stopping drum spinning.

If the laundry is extremely unevenly distributed, the speed is reduced or the spin cycle is not performed for safety reasons.

**Note:** Place large and small items of laundry evenly in the drum. → *Page 38*

### VoltCheck

depending on the model

The colon in the Finished in-time display:

- **Flashes** , if the voltage is currently too low.
- **Pulses**, if insufficient voltage was detected during the programme.



**Note:** Insufficient voltage may lead to programme extensions and/or a non-satisfactory spin result, for example.

## Cleaning and maintenance

### **Warning** **Danger of death!**

There is a risk of electric shock if you touch live components. Switch off the appliance and pull out the mains plug.

### **Warning** **Risk of poisoning!**


Toxic vapours can be produced by cleaning agents that contain solvents, e.g. cleaning solvent. Do not use cleaning agents that contain solvents.

### **Caution!** **Damage to the appliance**

Cleaning agents that contain solvents, e.g. cleaning solvent, can damage surfaces and components in the machine. Do not use cleaning agents that contain solvents.

### **Prevent detergent residue from building up and odours from forming by following these instructions:**

#### Notes

- Ensure the room in which the washing machine is set up is well ventilated.
- Leave the door and detergent dispenser tray open slightly when the washing machine is not in use.
- Occasionally run a wash using the  **Cottons 60 °C** programme and powder detergent.


### Machine housing/control panel

- Wipe the housing and the control panel with a soft, damp cloth.

- Remove the detergent residue immediately.
- Do not clean with a water jet.

## Drum

Use chlorine-free cleaning agents, do not use steel wool.

If there are odours in the washing machine, or to clean the drum, run the **Drum Clean**  **90 °C** programme without laundry. Add washing powder.

## Descaling

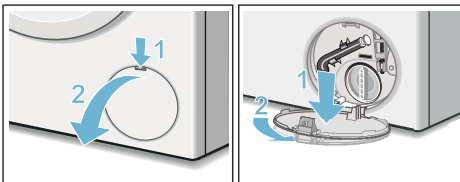
Descaling should not be necessary if the detergent is measured out correctly. However, if it is required, follow the manufacturer's instructions for the descaling agent. Suitable descalers can be obtained via our website or from customer services. → Page 40

## The drain pump is blocked, emergency draining

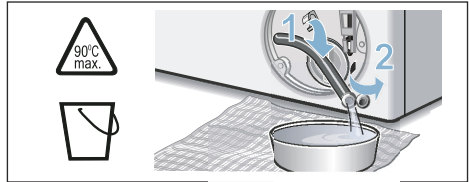
### **Warning** **Risk of scalding!**

When you wash at high temperatures, the water gets very hot. If you come into contact with the hot water, you may be scalded. Allow the detergent solution to cool down.

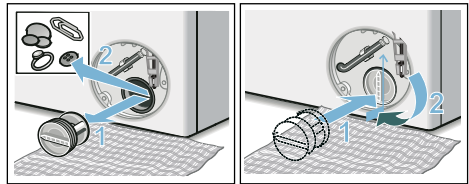
1. Turn off the water tap so that no more water can flow in and has to be drained via the drain pump.
2. Switch off the appliance. Pull out the mains plug.
3. Open and remove the service flap.



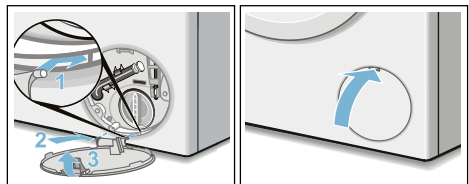
4. Take the auxiliary drain hose out of the holder. Remove the locking cap and drain off the water into a suitable container. Replace the locking cap and place the drain hose back in the holder.

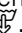


5. Carefully unscrew the pump cover; remaining water may leak out. Clean the interior, pump cover thread and pump housing. The impeller in the drain pump must be able to rotate. Refit and screw on the pump cover. The handle must be in a vertical position.



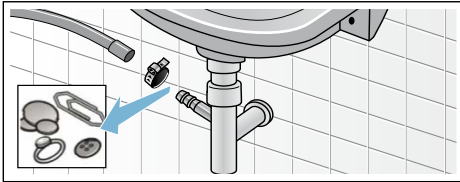
6. Put the service flap back on, engage and close it.



**Note:** To prevent unused detergent from flowing straight into the drain during the next wash: Pour 1 litre of water into the left-hand compartment and start the programme **Empty** .

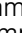

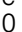
## The drain hose at the siphon is blocked

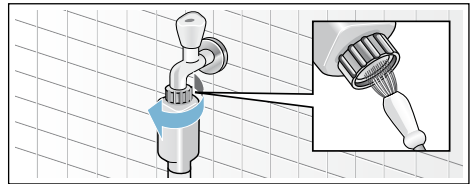
1. Switch off the appliance. Pull out the mains plug.
2. Loosen the hose clamp. Carefully remove the drain hose; residual water may leak out.
3. Clean the drain hose and siphon connecting piece.



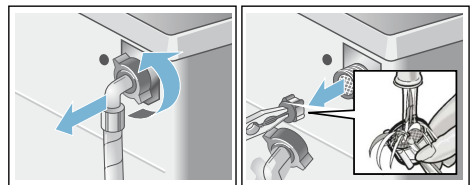
4. Re-attach the drain hose and secure the connection point using the hose clamp.

## Filter in the water supply blocked

1. Release water pressure in the supply hose:
  - a) Turn off the tap.
  - b) Select any programme (except Rinse /Spin /Empty ).
  - c) Start the programme and leave it to run for approx. 40 seconds.
  - d) Switch off the appliance.
  - e) Pull out the mains plug.
2. Clean the filters:
  - a) Disconnect the hose from the tap. Clean the filter with a small brush.



- b) For standard and Aqua-Secure models, clean the filter on the rear of the appliance: Disconnect the hose from the rear of the appliance. Use pliers to remove the filter and then clean it.



- c) Connect the hose and check for leaks.

en Faults and what to do about them.

## **Faults and what to do about them.**

### **Emergency release**

E.g. in the event of a power cut

The programme continues when the power supply is restored.

However, if the laundry has to be removed, the washing machine door can be opened as follows:

#### **Warning** **Risk of scalding!**

When you are washing at high temperatures, there is a risk of scalding if you come into contact with hot water and laundry.

If possible, leave it to cool down first.

#### **Warning** **Risk of injury!**

You may injure your hands if you reach into the drum while it is turning.

Do not reach into the drum when it is turning.

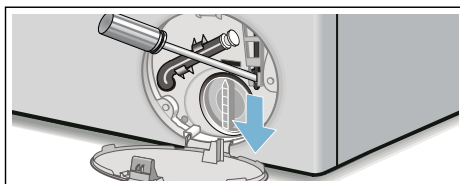
Wait until the drum has stopped turning.

#### **Caution!** **Water damage**



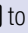
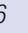



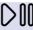
Any escaping water may cause water damage.






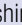

Do not open the door if water can be seen through the glass.

1. Switch off the appliance. Pull out the mains plug.
2. Drain the water. → *Page 34*
3. Pull the emergency release downwards with a tool and release. The door can then be opened.

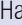
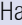





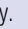


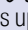


## **Information on the display panel**

Indicator	Cause/remedy
 off	The door is unlocked, at the end of the programme or when paused, if laundry can be added.
 is lit up	<ul style="list-style-type: none"><li>■ During the programme: Door locked.</li><li>■ Paused: Temperature too high. Wait until the temperature drops.</li><li>■ Paused: Spin speed too high. Wait until the drum comes to a halt.</li><li>■ Paused: Water level too high. It is not possible to add laundry. Touch  to continue the programme.</li><li>■ Have you selected  (Rinse Stop = no final spin)? → <i>Page 26</i></li></ul>
 is flashing	<ul style="list-style-type: none"><li>■ Slowly: The door cannot currently be locked or unlocked. Waiting time required.</li><li>■ Quickly: Close the door because water can flow out from the laundry.</li></ul>
 off	At the end of the programme, while the door is open
 is lit up	After the programme has started
 is flashing	Before the programme starts, paused

Indicator	Cause/remedy
 is lit up	Water pressure too low, may increase the length of the programme.
 is flashing	No water supply: <ul style="list-style-type: none"> <li>■ Turn the tap on fully,</li> <li>■ The supply hose is kinked/trapped,</li> <li>■ Clean the filter if necessary. → <i>Page 35</i></li> </ul>
 3 sec is lit up	The childproof lock is activated – deactivate it. → <i>Page 30</i>
 3 sec is flashing	The childproof lock is activated – the programme selector has been turned or the control panel touched.
 is flashing	Run the <b>Drum Clean</b>  <b>90 °C</b> programme or a 60 °C programme to clean and care for the drum and the outer tub. <b>Notes</b> <ul style="list-style-type: none"> <li>■ Run the programme without laundry.</li> <li>■ Use standard washing powder or a detergent that contains bleach. To prevent foaming, only use half the amount of detergent recommended by the detergent manufacturer. Do not use detergents intended for woollens or delicates.</li> <li>■ Switching the information signal on/off → <i>Page 32</i></li> </ul>
 is lit up	Too much foam has been detected and additional rinse cycles have been activated. Add less detergent to the next wash cycle with the same load.
E:60 alternating with -2b and <b>End</b>	At the end of the programme. Not an appliance fault – the unbalanced load detection system has interrupted the spin cycle because the laundry is unevenly distributed. Distribute small and large items of laundry evenly in the drum. Spin the laundry again if necessary.
E:35 alternating with -10	There is water in the base trough; the appliance is leaking. Turn off the tap. Call the after-sales service. → <i>Page 40</i>
E:36 alternating with -10	<ul style="list-style-type: none"> <li>■ The drain pump is blocked. Clean the drain pump. → <i>Page 34</i></li> <li>■ The drain hose/drain pipe is blocked. Clean the drain hose at the siphon. → <i>Page 35</i></li> </ul>
Other indicators	Switch off the appliance, wait for five seconds and then switch it on again. If the indicator appears again, call the after-sales service. → <i>Page 40</i>

## Faults and what to do about them.

Faults	Cause/remedy
Water is leaking from the machine.	<ul style="list-style-type: none"> <li>■ Attach the drain hose correctly or replace it.</li> <li>■ Tighten the threaded joint on the supply hose.</li> </ul>
The appliance is not filling with water.	<ul style="list-style-type: none"> <li>■ Will the programme start?</li> <li>■ Is the tap turned on?</li> </ul>
Detergent is not being dispensed.	<ul style="list-style-type: none"> <li>■ Could the filter be clogged? Clean the filter. → <i>Page 35</i></li> <li>■ Is the supply hose kinked or trapped?</li> </ul>
The door will not open.	<ul style="list-style-type: none"> <li>■ The safety function is active. Do you want to stop the programme? → <i>Page 31</i></li> <li>■ Have you selected  (Rinse Stop = no final spin)? → <i>Page 31</i></li> <li>■ Can the door only be opened by the emergency release? → <i>Page 36</i></li> <li>■ If you switch to a different programme, the door will remain locked for a short time until there is no longer any active oxygen in the drum.</li> </ul>
The programme will not start.	<ul style="list-style-type: none"> <li>■ Have you started the programme or selected Finished in-time?</li> <li>■ Is the door closed?</li> <li>■ Is the childproof lock activated? Deactivate it. → <i>Page 30</i></li> </ul>
The drum briefly jerks or judders after the programme has started.	Not a fault – the internal motor test may cause the drum to jerk or judder briefly when the wash programme starts.
The water is not draining.	<ul style="list-style-type: none"> <li>■ Have you selected  (Rinse Stop = no final spin)? → <i>Page 31</i></li> <li>■ Clean the drain pump. → <i>Page 34</i></li> <li>■ Clean the drain pipe and/or the drain hose.</li> </ul>
Water is not visible in the drum.	Not a fault – the water is below the visible area.
The spin result is not satisfactory. Laundry wet/too damp.	<ul style="list-style-type: none"> <li>■ Not a fault – the unbalanced load detection system has interrupted the spin cycle because the laundry is unevenly distributed. Distribute small and large items of laundry evenly in the drum.</li> <li>■ Is Easy-Iron selected? → <i>Page 26</i></li> <li>■ Is the selected speed too low?</li> </ul>
The spin cycle runs several times.	Not a fault – the unbalanced load detection system is adjusting an imbalance.
The programme is taking longer than usual.	<ul style="list-style-type: none"> <li>■ Not a fault – the unbalanced load detection system is adjusting an imbalance by repeatedly redistributing the laundry.</li> <li>■ Not a fault – the foam detection system is active – a rinse cycle has been activated.</li> </ul>
The length of the programme changes during the wash cycle.	Not a fault – the programme sequence is optimised for the specific washing process. This may change the length of the programme shown on the display panel.
Water remaining in the care product compartment  .	<ul style="list-style-type: none"> <li>■ Not a fault – the effectiveness of the care product is not affected.</li> <li>■ Clean the insert if necessary.</li> </ul>

Faults	Cause/remedy
Odours in the washing machine.	Run the <b>Drum Clean</b>  or <b>Cottons 90 °C</b> programme without laundry. Add standard washing powder or a detergent that contains bleach. <b>Note:</b> To prevent foaming, only use half the amount of detergent recommended by the detergent manufacturer. Do not use detergents intended for woollens or delicates.
The  indicator has lit up in the touch display. Foam may also be leaking from the detergent drawer.	Have you used too much detergent? Mix one tablespoon of fabric softener with half a litre of water and pour it into compartment <b>II</b> (not suitable for outdoor clothing, sportswear or items made with down). Use less detergent for the next wash cycle.
Loud noises, vibrations and machine “wandering” during the spin cycle.	<ul style="list-style-type: none"> <li>■ Is the appliance level? Level the appliance. → <i>Page 16</i></li> <li>■ Are the appliance's feet secured? Secure the appliance's feet. → <i>Page 16</i></li> <li>■ Have the transportation securing means been removed? Remove the transportation securing means. → <i>Page 14</i></li> </ul>
The touch display does not work while the appliance is running.	<ul style="list-style-type: none"> <li>■ Has there been a power failure?</li> <li>■ Have the fuses blown/has the circuit breaker tripped? Switch on the circuit breaker/replace the fuses.</li> <li>■ If the fault occurs repeatedly, call the after-sales service.</li> </ul>
There is detergent residue on the laundry.	<ul style="list-style-type: none"> <li>■ Some phosphate-free detergents contain water-insoluble residue.</li> <li>■ Select <b>Rinse</b>  or brush the laundry after washing.</li> </ul>
When the appliance is paused,  flashes and  lights up.	<ul style="list-style-type: none"> <li>■ The water level is too high. It is not possible to add laundry. Close the door immediately if necessary.</li> <li>■ Touch  to continue the programme.</li> </ul>
 flashes when the appliance is paused and  is off.	The door is unlocked. It is possible to add laundry.
If you cannot rectify a fault yourself (after switching the machine off and then on again) or a repair is required: <ul style="list-style-type: none"> <li>■ Switch off the appliance and pull the mains plug out of the socket.</li> <li>■ Turn off the tap and call the after-sales service.</li> </ul>	



## After-sales service

If you cannot rectify a fault yourself, contact customer services. → Cover page

We will always find an appropriate solution in order to avoid unnecessary visits by engineers.

Please give customer services the product number (E no.) and the production number (FD) of the appliance.

E-Nr. _____	FD _____
-------------	----------

E no.      Product number  
FD        Production number

You can find this information  
\*depending on the model:

On the inside of the door\*/in the opened service flap\* and on the rear of the appliance.

### **Trust the expertise of the manufacturer.**

Contact us for assistance. By doing so, you will ensure that the repairs are carried out by trained service personnel using genuine spare parts.



## Technical data

### **Dimensions:**

85 x 60 x 59 cm  
(height x width x depth)

### **Weight:**

66 - 73 kg\*

### **Mains connection:**

Nominal voltage: 220-240 V / 50 Hz

Nominal current: 10 A

Nominal power: 1900 - 2300 W

### **Water pressure:**

100 - 1000 kPa (1-10 bar)

\* Depending on the model





## Aqua-Stop warranty

### Only for appliances with Aqua-Stop

In addition to warranty claims against the vendor based on the purchase agreement and to our appliance warranty, we will provide compensation under the following conditions:

1. If water damage is caused due to a fault in our Aqua-Stop system, we will compensate domestic customers for the damage caused.
2. The liability guarantee is valid for the service life of the appliance.
3. It is a prerequisite of all warranty claims that the appliance with Aqua-Stop must have been installed and connected correctly in accordance with our instructions; this also includes a correctly fitted Aqua-Stop extension (genuine accessories). Our warranty does not cover defective feed lines or fittings leading to the Aqua-Stop connection at the tap.
4. Appliances with Aqua-Stop do not need to be supervised during operation, nor secured afterwards by turning off the tap.  
The tap only needs to be turned off if you are away from home for a long period, e.g. for several weeks' holiday.

## **Aqua-Stop warranty**

Only for appliances with Aqua-Stop

In addition to warranty claims against the vendor based on the purchase agreement and to our appliance warranty, we will provide compensation under the following conditions:

1. If water damage is caused due to a fault in our Aqua-Stop system, we will compensate domestic customers for the damage caused.
2. The liability guarantee is valid for the service life of the appliance.
3. It is a prerequisite of all warranty claims that the appliance with Aqua-Stop must have been installed and connected correctly in accordance with our instructions; this also includes a correctly fitted Aqua-Stop extension (genuine accessories). Our warranty does not cover defective feed lines or fittings leading to the Aqua-Stop connection at the tap.
4. Appliances with Aqua-Stop do not need to be supervised during operation, nor secured afterwards by turning off the tap. The tap only needs to be turned off if you are away from home for a long period, e.g. for several weeks' holiday.

### **Repair order and advice in the event of faults**

GB 0344 892 8999 (Calls charged at local or mobile rate.)

IE 01450 2655 (0.03 € per minute at peak. Off peak 0.0088 € per minute.)

You can find the contact information for all countries in the attached after-sales service directory.

BSH Hausgeräte GmbH

Carl-Wery-Straße 34

81739 München

GERMANY

siemens-home.bsh-group.com

Manufactured by BSH Hausgeräte GmbH under Trademark License of Siemens AG



9001155877 (9612)