



SIEMENS



Tumble dryer

WT47U640GB

siemens-home.com/welcome

en Installation and operating instructions

Register
your
product
online

Your new tumble dryer

You have opted for a tumble dryer manufactured by Siemens.

Please take a few minutes to read and become familiar with the advantages of your tumble dryer.

To meet the high quality demands required by Siemens, every tumble dryer that leaves our factory is carefully checked to ensure that it functions correctly and is in perfect condition.

For more information on our products, accessories, replacement parts and services, see our website www.siemens-home.com or contact our Customer Service centres.

If the operating and installation instructions describe different models, any differences will be pointed out at the relevant points in the text.



Read these operating and installation instructions before operating the tumble dryer.

Display rules

Warning!

This combination of symbol and signal word indicates a possibly dangerous situation. Not heeding the warning can cause death or injuries.

Caution!

This signal word indicates a possibly dangerous situation. Not heeding the caution can cause property and/or environmental damage.

Note/tip

Information about the optimum use of the appliance/any other useful information.





1. 2. 3. / a) b) c)

The steps are represented by numbers or letters.

■ / -

Lists are represented by a small box or a dash.

Contents

 Intended use	4	Programme sequence	32
 Safety instructions	5	Changing the programme or adding laundry	32
Children/people/pets	5	Cancelling the programme	32
Installation	6	Programme end	32
Operation	8	Removing laundry and switching off the dryer	32
Cleaning/Maintenance	11	Emptying the condensate container	33
 Environmental protection	13	Clean the fluff filter	34
Packaging/old appliance	13	 Noises	35
Coolant	13	 Appliance settings	36
Energy-saving tips	13	Activating the setting mode	36
 Installation and connection	14	Adjusting the volume of the information signals	36
Scope of delivery	14	Adjusting the volume of the operating signals	36
Installing and connecting the dryer	14	Adjusting the brightness of the touch display	37
Changing the condensation drain	15	Exiting setting mode	37
Optional accessories	18	 Cleaning	38
Transport and frost protection	18	Cleaning the dryer and the control panel	38
 The main points in brief	19	Cleaning the moisture sensor	38
 Getting to know your appliance	20	Cleaning the filter in the condensate container	38
Dryer	20	Basic appliance care programme	39
Control panel	21	Intensive appliance care programme	41
Touch display	22	Cleaning the air shaft	43
 Laundry	24	 Faults and what to do about them	45
Preparing the laundry	24	 After-sales service	47
Sorting washing according to	24	 Consumption values	48
 Programmes and buttons	25	Consumption values table	48
Programmes	25	Most efficient programme for cotton fabrics	48
Buttons on the touch display	27	 Technical data	49
 Operating the appliance	29		
Loading laundry and switching on the dryer	29		
The basket for woollens	29		
Drying with the basket for woollens	30		
Setting a programme	31		
Starting the programme	32		



Intended use

- This appliance is intended for private domestic use only.
- Do not install or operate this appliance anywhere that is liable to experience frost and/or outdoor conditions. There is a risk that the appliance will be damaged if residual water in it freezes. If hoses freeze up, they may crack/burst.
- This appliance must only be used for drying and freshening up domestic laundry, consisting of items that have been washed with water and are suitable for tumble drying (see label on item). Using the appliance for any other purpose is outside of the scope of its intended application and is forbidden.
- This appliance is intended for use up to a maximum height of 4000 metres above sea level.

Before you switch on the appliance:

Check that there is no visible damage to the appliance. Do not operate the appliance if it is damaged. Should you have any problems, please contact your specialist dealer or our customer service.

Read and follow the operating and installation instructions and all other information provided with this appliance.

Retain the documents for subsequent use or for subsequent owners.

Safety instructions

The following safety information and warnings are provided to protect you from injury and to prevent material damage to your surroundings.

It is nevertheless important to take the necessary precautions and to proceed with care when installing, maintaining, cleaning and operating the appliance.

Children/people/pets

Warning **Risk of death!**

Children and other people who are unable to assess the risks involved when using the appliance may injure themselves or may find themselves in life-threatening situations. Therefore please note:

- The appliance may be used by children over the age of 8 years and by persons with reduced physical, sensory or mental capacity or by persons with a lack of experience or knowledge as long as they are supervised or have received instruction on how to use the appliance safely and they have understood the potential risks of using the appliance.
- Children must not play with this appliance.

- Do not allow children to clean or maintain this appliance unsupervised.
- Keep children under 3 years and pets away from this appliance.
- Do not leave the appliance unattended when children or other people who are unable to assess the risks are in the vicinity.

Warning **Risk of death!**

Children may lock themselves inside appliances and find themselves in a life-threatening situation.

- Do not position the appliance behind a door, as this may obstruct the appliance door or prevent it from opening completely.
- Once an appliance has reached the end of its life, pull the mains plug from the socket **before** severing the mains cable, and then destroy the lock on the appliance door.

⚠ Warning

Risk of suffocation!

If allowed to play with the packaging/plastic film or packing components, children may become caught in these or pull them over their heads and suffocate.

Keep packaging, plastic film and packing components away from children.

⚠ Warning

Risk of poisoning!

Detergents and care products may result in poisoning if consumed.

If accidentally swallowed, seek medical advice. Keep detergents and care products out of the reach of children.

⚠ Warning

Eye/skin irritation!

Contact with detergents or care products may cause eye/skin irritation.

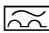
Rinse eyes/skin thoroughly if they/it come(s) into contact with detergents or care products. Keep detergents and care products out of the reach of children.

Installation

⚠ Warning

**Risk of electric shock/fire/
material damage/damage to
the appliance!**

If the appliance is not installed properly, this may lead to a dangerous situation. Make sure that:

- The mains voltage on your power socket matches the rated voltage specified on the appliance (identification plate). The connected loads and the required fuse protection are specified on the identification plate.
- The appliance is only connected to a source of alternating current via a nationally recognized and grounded outlet that has been correctly installed.
- The mains plug and the grounded socket match and the earthing system has been correctly installed.
- The cross section of the cable is sufficiently large enough.
- The mains plug is accessible at all times.
- If using a residual current circuit breaker, only use one that bears the following mark: . The presence of this mark is the only way to be sure that it fulfils all the applicable regulations.

⚠ Warning**Risk of electric shock/fire/
material damage/damage to
the appliance!**

If the appliance's mains cable is altered or damaged, this may result in electric shock, short circuiting or fire due to overheating.

The mains cable must not be kinked, crushed or altered, and must not come into contact with any heat sources.

⚠ Warning**Risk of fire/material damage/
damage to the appliance!**

The use of extension cords or power strips may result in fire due to overheating or short circuiting.

Connect the appliance directly to an earthed socket that has been correctly installed. Do not use extension cords, power strips or multi-way couplers.

⚠ Warning**Risk of injury/material
damage/damage to the
appliance!**

- The appliance may vibrate or move when in operation, potentially resulting in injury or material damage.

Place the appliance on a clean, even, solid surface and, using a spirit level to guide you, level it with the screw-in feet.

- Incorrectly placing (stacking) this appliance on top of a washing machine may result in injury, material damage and/or damage to the appliance.

If this appliance is to be placed on top of a washing machine, the washing machine must be of at least the same depth and width as the appliance, and it must be secured in place with the appropriate connection set if available. → *Page 18* The appliance **MUST** be secured with this connection set. Stacking the appliance in any other way is forbidden.

- If you take hold of any of the appliance's protruding parts (e.g. the appliance door) in order to lift or move it, these parts may break off and cause injury.

Do not take hold of any of the appliance's protruding parts in order to move the appliance.

Warning

Risk of injury!

- The appliance is very heavy. Lifting it may result in injury. Do not lift the appliance on your own.
- The appliance has sharp edges on which you could cut your hands. Do not take hold of the appliance by its sharp edges. Wear protective gloves to lift it.
- If the hoses and mains cables are not correctly routed, they may constitute a tripping hazard, which may result in injury. Route hoses and cables such that they do not constitute a tripping hazard.

Operation

Warning

Risk of explosions/fire!

Laundry that has come into contact with solvents, oil, wax, wax remover, paint, grease or stain remover may ignite when dried in the machine, or even cause the appliance to explode. Therefore please note:

- Rinse the laundry thoroughly with warm water and detergent before drying it in the machine.
- Do not place laundry in this appliance to be dried if the laundry has not been washed first.
- Do not use the appliance if industrial chemicals have been used to clean the laundry.

⚠ Warning**Risk of explosions/fire!**

- If there is any residual material left in the fluff filter, this may ignite when drying is in progress, or even cause the appliance to catch fire or explode. Clean out the fluff filter each time the appliance is used to dry laundry.
- Certain objects may ignite when drying is in progress, or even cause the appliance to catch fire or explode. Remove any lighters or matches from pockets on items of clothing.
- If there is coal dust or flour in the air around the appliance, this may cause an explosion. Make sure that the area around the appliance is kept clean when it is in operation.

⚠ Warning**Risk of fire/material damage/ damage to the appliance!**

The appliance contains R290, a refrigerant that is environmentally friendly but flammable. Keep open fire and ignition sources away from the appliance.

**⚠ Warning****Risk of fire/material damage/ damage to the appliance!**

If a program is terminated before the drying cycle has finished, this prevents the laundry from cooling down sufficiently and may cause the laundry to ignite, or may result in material damage or damage to the appliance.

- During the last part of the drying cycle, the laundry in the drum is not heated (cooling cycle). This is to ensure that it remains at a temperature at which it will not be damaged.
- Do not switch off the appliance before the drying cycle has finished unless you remove all items of laundry from the drum immediately and spread them out (to dissipate the heat).

⚠ Warning**Risk of poisoning/material damage!**

Condensation water is not suitable for drinking and may be contaminated with lint. Contaminated condensation water may be hazardous to health and may cause material damage.

Do not drink or reuse.

 **Warning**

Risk of poisoning!

Poisonous fumes may be given off by cleaning agents that contain solvents, e.g. cleaning solvent.

Do not use cleaning agents that contain solvents.

 **Warning**

Risk of injury!

- If you support your weight/sit on the appliance door when it is open, the appliance may tip over, which may result in injury.

Do not support your weight on the appliance door when it is open.

- If you climb onto the appliance, the worktop may break, which may result in injury.

Do not climb onto the appliance.

- If you reach into the drum while it is still rotating, you risk injuring your hands. Wait until the drum has stopped rotating.

Caution!

Material damage/damage to the appliance

- If the amount of laundry in the appliance exceeds its maximum load capacity, it may not be able to operate properly, or this may result in material damage or damage to the appliance.

Do not exceed the maximum load capacity of dry laundry. Make sure you comply with the maximum load capacities specified for each of the programs. → *Page 25*

- If you operate the appliance without a fluff filter, or if the fluff filter is defective, this may result in damage to the appliance.

Do not operate the appliance without a fluff filter, or with a fluff filter that is defective.

- Light objects such as hair and lint may be sucked into the air inlet when the appliance is in operation. Keep these away from the appliance.
- Foam and foam rubber may deform or melt if dried in the appliance. Do not dry laundry items that contain foam or foam rubber in the appliance.

- If you pour the wrong quantity of detergent or cleaning agent into the appliance, this may result in material damage or damage to the appliance. Use detergents/care products/cleaning agents and softeners in accordance with the manufacturers' instructions.
- If the appliance overheats, it may not be able to operate properly, or this may result in material damage or damage to the appliance. Make sure that the appliance's air inlet is never obstructed when the appliance is in operation, and that the area around the appliance is adequately ventilated.

Cleaning/Maintenance

Warning

Danger of death!

The appliance is powered by electricity. There is a risk of electric shock if you come into contact with live components. Therefore please note:

- Switch off the appliance. Disconnect the appliance from the power supply (pull out the plug).
- Never take hold of the mains plug with wet hands.
- When removing the mains plug from the socket, always take hold of the plug itself and never the mains cable, otherwise this may damage the mains cable.
- Do not make any technical modifications to the appliance or its features.
- Repairs and any other work on the appliance must only be conducted by our customer service or by an electrician. The same applies for replacing the mains cable (when necessary).
- Spare mains cables can be ordered from our customer service.

 **Warning**

Risk of poisoning!

Poisonous fumes may be given off by cleaning agents that contain solvents, e.g. cleaning solvent.

Do not use cleaning agents that contain solvents.

 **Warning**

Risk of electric shock/material damage/damage to the appliance!

If moisture penetrates the appliance, this may cause it to short circuit.

Do not use a pressure washer or steam cleaner to clean your appliance.

 **Warning**

Risk of injury/material damage/damage to the appliance!

The use of spare parts and accessories supplied by other brands is dangerous and may result in injury, material damage or damage to the appliance.

For safety reasons, use genuine spare parts and accessories only.

Caution!

Material damage/damage to the appliance

Cleaning agents and agents for pretreating laundry (e.g. stain removers, prewash sprays, etc.) may cause damage if they come into contact with the surfaces of the appliance. Therefore please note:

- Do not allow these agents to come into contact with the surfaces of the appliance.
- Clean the appliance with nothing but water and a soft, damp cloth.
- Remove any detergent, spray or other residues immediately.



Environmental protection

Packaging/old appliance



Dispose of packaging in an environmentally-responsible manner.

This appliance is designated according to European directive 2012/19/EC which governs waste electrical and electronic equipment (WEEE).

The directive provides a framework for the collection and recycling of old appliances, which is valid across the EU.

Coolant

Caution!

Risk of fire/risk of poisoning/risk of material damage and damage to the appliance

The appliance contains refrigerant which, although it is environmentally friendly, is flammable R290. Failure to dispose of it properly may result in a fire or poisoning.

Dispose of the appliance properly and do not damage the pipes in the refrigerant circuit.

Energy-saving tips

- Spin the laundry before drying. The drier the laundry, the shorter the drying time will be, thus reducing energy consumption.
- Load the appliance with the maximum load.
 - Note:** Do not exceed the maximum load for the programmes, as this prolongs the drying time and increases energy consumption.
- Ventilate the room and make sure that the air inlet on the appliance is unobstructed so that air exchange can take place unhindered.
- Remove the fluff from the appliance every time you use it for drying. If there is fluff in the appliance, this prolongs the drying time and increases energy consumption.
- **Energy saving mode:** If you do not perform any actions on the appliance for an extended period before the programme starts or once the programme has ended, the appliance will automatically switch to Energy saving mode. The display panel and indicator lights will go out after a few minutes. To end Energy saving mode, all you need to do is perform an action on the appliance, such as opening and closing the dryer door. If you do not perform any actions on the appliance for an extended period when it is in Energy saving mode, the appliance will automatically switch itself off.



Installation and connection

Scope of delivery

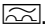
- Dryer
- Installation and operating instructions
- Basket for woollens*
- Condensation drain*

Installing and connecting the dryer



Warning **Risk of death!**

There is a risk of electric shock as the dryer is operated with electricity.

- Check the dryer for visible damage. You must not operate the dryer if it is damaged.
- Before connecting the dryer to the power supply, ensure that the electric voltage specified on the rating plate matches the voltage of your socket.
- Only use residual current circuit breakers with the following symbol: .
- Ensure that the mains cable is not kinked or trapped, and that it does not come into contact with heat sources or sharp edges.



Warning **Children could lock themselves in the dryer, putting their lives at risk!**

Do not set up the dryer behind a door or sliding door, as this may obstruct the dryer door or prevent it from opening.



Warning **Risk of fire/risk of poisoning/risk of material damage and damage to the appliance!**

The dryer contains refrigerant which, although it is environmentally friendly, is flammable R290.

- Make sure that the air inlet on the dryer is always kept clear and that the room has sufficient ventilation.
- In the event of a leak, any escaping refrigerant could lead to poisoning and create a combustible air/gas mixture if the room is too small. Only operate this appliance in rooms which are sufficiently large. The room must have a capacity of 1 m³ per 8 g of refrigerant. The amount of refrigerant in your appliance can be found on the back of the appliance.
- Do not place the dryer near open fires and ignition sources.

Caution!

Risk of injury

- As the dryer is heavy, you could injure yourself by trying to lift it. Do not lift the dryer on your own.
- You could cut your hands on the sharp edges of the dryer. Do not hold the dryer by the sharp edges.
- Protruding parts on the dryer may break off when it is lifted or pushed. Do not move the dryer by holding onto protruding parts.

Caution!

Risk of material damage to the dryer or fabrics

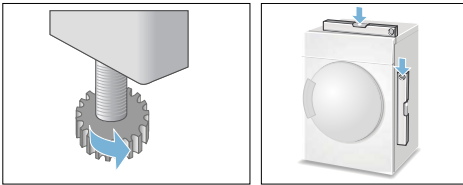
- Check the dryer for damage caused during transportation. Never operate a dryer if it is damaged.
- Any residual water in the dryer may freeze and damage the dryer. Do not install the dryer in rooms that are at risk of frost.

* Depending on the model

During installation, ensure that:

- The dryer is placed on a clean, level and firm surface,
- The mains plug can be accessed at all times,
- The area around the dryer is kept clean and
- The dryer is levelled using the threaded feet.

Note: Check the alignment of the appliance with a spirit level and correct if necessary. Change the height by turning the appliance feet. All appliance feet must stand firmly on the ground.



Incorrect alignment may cause high noise levels, vibrations and improper movement of the drum.

Note: If in doubt, have the appliance connected by a specialist.

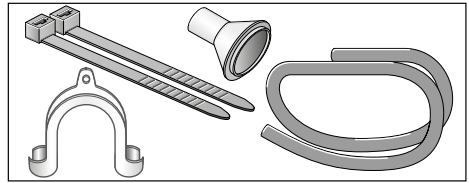
Changing the condensation drain

Notes

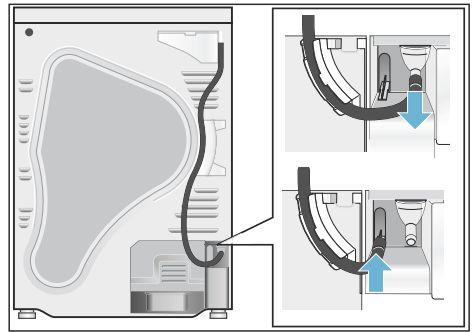
- The condensation from the dryer can either be discharged into the condensation container or drained off via a connection to the waste-water system. By default, the condensation from the dryer is discharged into the condensation container.
- If the condensation drain is installed, residual water remains in the condensation container due to the dryer's self-cleaning function.

Proceed as follows to change the condensation drain:

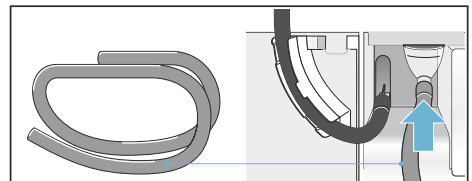
1. Remove the accessories from the dryer drum.



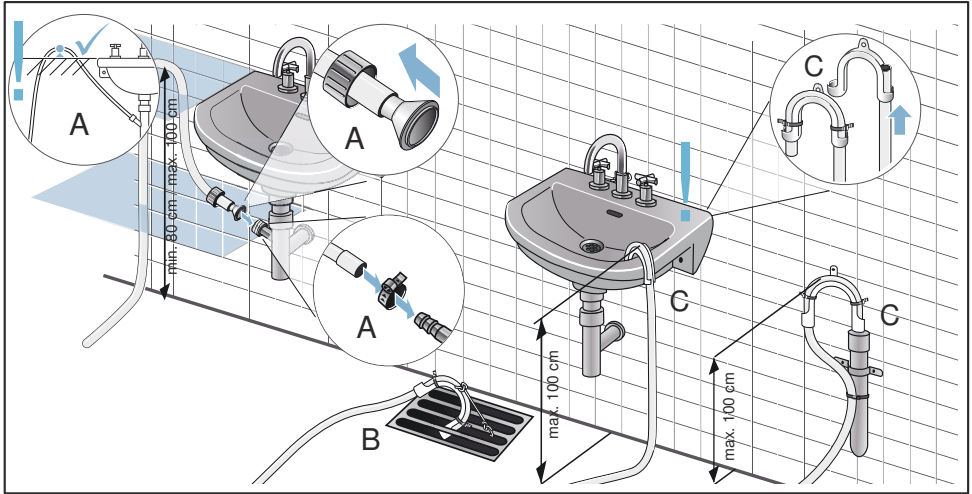
2. When the dryer is delivered from the factory, the hose for discharging the condensation into the condensation container is fastened to the connecting piece.
3. Disconnect the hose from the connecting piece and put it in the "parked" position.



4. Take the drain hose from the accessories and secure it to the free connecting piece.



5. Fasten the other end of the drain hose with the remaining accessories, depending on the connection situation (A, B or C).



Caution!

Accumulated water can be drawn back into the dryer and may cause material damage.

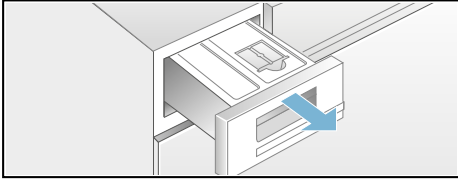
Check that the water drains away from the wash basin quickly. The drain must not be sealed or blocked.

Caution!

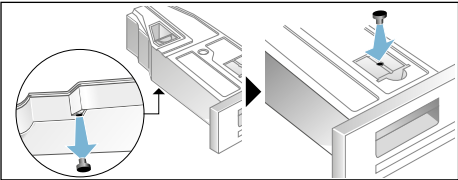
Material damage due to leaks or draining water.

Secure the drain hose so that it cannot slip out. Do not kink the drain hose. Ensure that a height difference of max. 100 cm and min. 80 cm between the installation surface and the drain is maintained for drainage into a siphon.

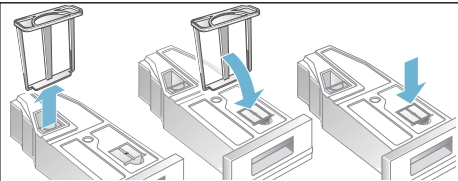
6. Pull out the condensation container fully.



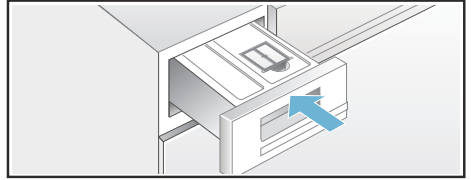
7. Turn the condensation container 180° onto its underside and remove the stopper that is fitted. Turn the condensation container back over and insert the stopper into the recess in the top of the condensation container.



8. Pull the filter out of the lock-in slot and place it into the recess in the top of the condensation container.



9. Slide in the condensation container until it clicks into place.



The condensation is now discharged via the drain hose into the waste-water system or into a wash basin

Note: If you want to change the condensation drain back to the condensation container, carry out all these steps in reverse order.

Optional accessories

Order optional accessories* from the after-sales service:

- **Platform:**
For easier loading and unloading, raise your dryer with a platform. Transport laundry using the clothes basket integrated into the platform drawer.
Order number: **WZ20505**.

Transport and frost protection

1. Empty the condensate container.
2. Select any programme using the programme selector.
3. Press the Start button.
4. Wait for 5 minutes.
Note: The condensation is drained.
5. Empty the condensate container again.
6. Switch off the dryer.

Note: Despite draining, there will always be some residual water in the dryer.

Caution!

Any residual water may leak out and cause material damage.

Transport the dryer in an upright position.

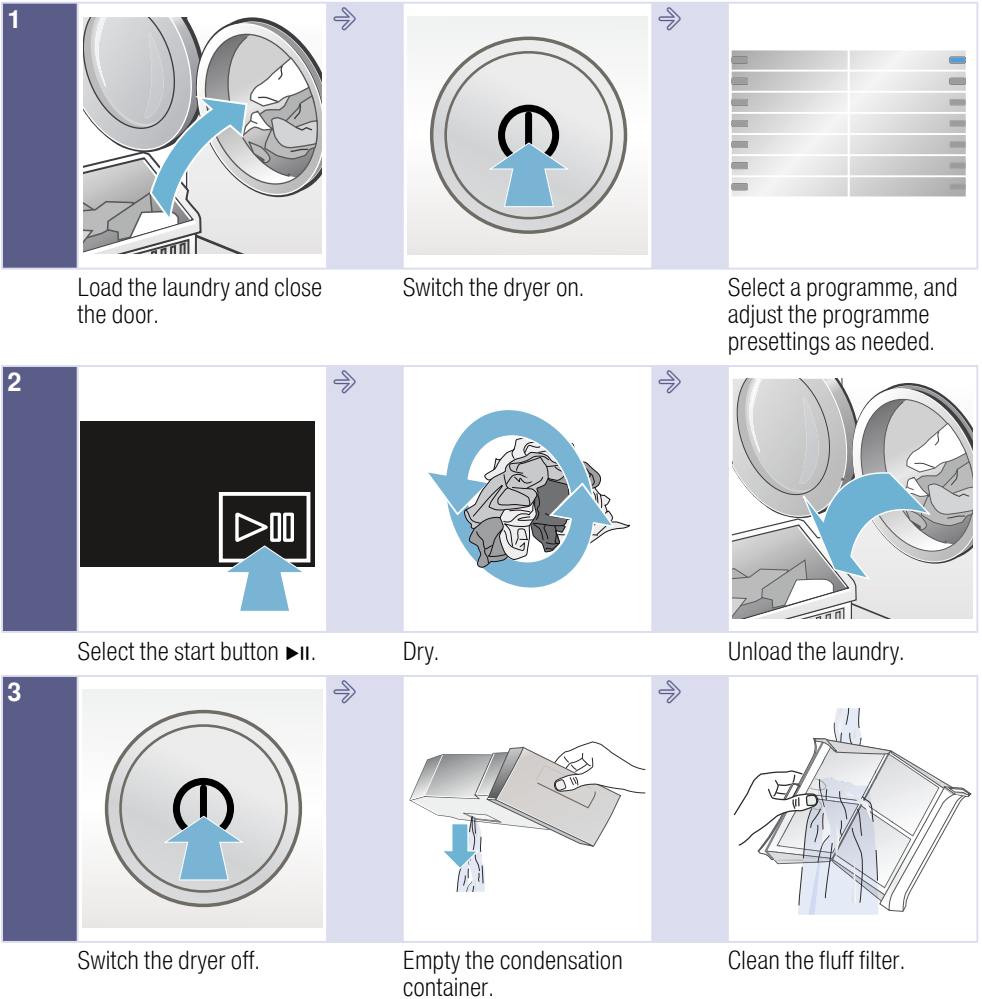
Caution!

The dryer contains coolant and may be damaged.

Allow the dryer to rest for two hours before initial use.

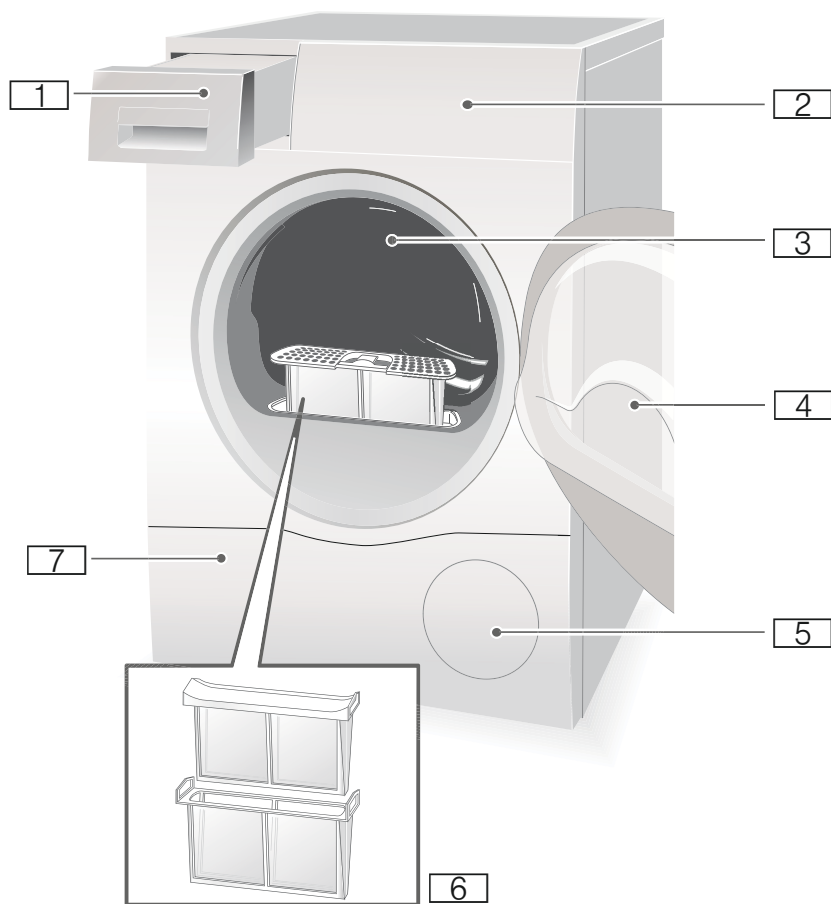
* depending on the model

The main points in brief



Getting to know your appliance

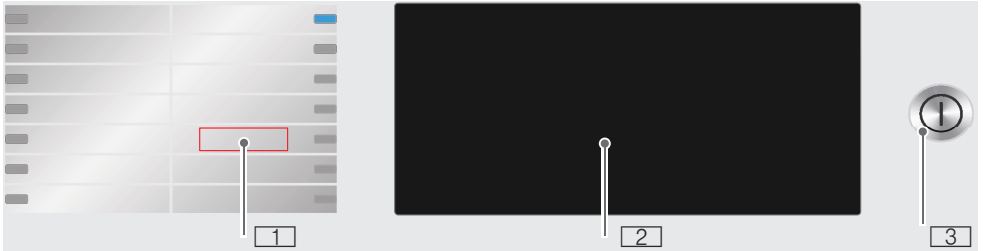
Dryer



- 1** Condensation container
- 2** Control and display panel
- 3** Drum interior light*
- 4** Dryer door
- 5** Air inlet
- 6** Fluff filter
- 7** Maintenance flap

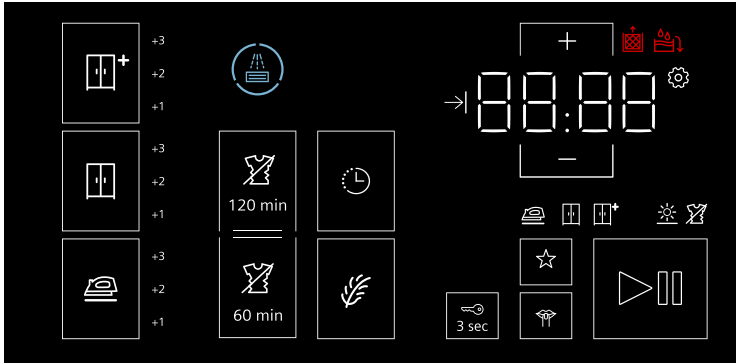
* Depending on the model

Control panel








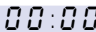

- 1** **Programmes** → *Page 25*. Touch the middle of the programme buttons.
- 2** **Touch display** → *Page 22*. Touch the outlined boxes.
- 3** **Main switch**. Press this button to switch the appliance on or off.

Touch display



Note: Lightly touch the outlined boxes on the touch display to select the settings you require. The selected settings will be highlighted on the touch display. Touching a box repeatedly allows you to change or disable the selected setting.

Buttons on the touch display	Explanation
+1; +2; +3	Dryness level: Cupboard Dry Plus Drying degree can be finely adjusted
+1; +2; +3	Dryness level: Cupboard Dry Drying degree can be finely adjusted
+1; +2; +3	Dryness level: Iron Dry Drying degree can be finely adjusted
120 min/60 min	Anti-Crease
	"Ready in" time
	Selection buttons
	Low-Heat Drying
3 sec	Childproof lock
	Favourite programme
	Quiet drying with no audible button tones or "programme end" signal
	Start and Pause
Detailed description of the symbols from → Page 27.	

Symbol	Explanation
	Heat exchanger is being rinsed
	Clean the fluff filter → <i>Page 34</i>
	Empty the condensation container → <i>Page 33</i>
	Drying programme status:
	Iron Dry, Cupboard Dry, Cupboard Dry Plus, Anti-Crease, Pause, Programme end
	Programme length, e.g. 1:51, or "Ready in" time, e.g. 8.5 h. Note: When a programme is selected, the expected drying time for the recommended load will be displayed. During drying, moisture sensors detect the remaining moisture in the load and adjust the programme length accordingly (except timed programmes). You can see that this is happening when the time remaining skips forwards.
	Settings



Laundry

Preparing the laundry



Warning

Risk of explosion/fire!

Remove any cigarette lighters and matches from pockets.

Caution!

The dryer drum and fabrics could be damaged.

Remove all objects from pockets and observe the following information:

- Tie cloth belts, apron strings, etc. together or use a laundry bag.
- Close zips, hooks and eyelets and buttons. Button up large items of laundry, such as covers.
- Remove any metal objects, such as paper clips, from pockets.
- To ensure a consistent drying result, sort laundry by fabric type and drying programme.
- Always dry very small items of laundry, e.g. babies' socks, together with large items such as towels.
- Knitted fabrics such as T-shirts and jerseys often shrink the first time they are tumble-dried. Use a gentle programme.
- Do not overdry easy-care laundry. This increases creasing of the laundry.
- Use timed programmes for single garments.

- Some detergents and care products, e.g. starch or softeners, contain particles which may be deposited on the moisture sensor. This may impair the sensor function and in consequence the drying result.

Notes

- When washing laundry to be tumble-dried, use the correct amount of detergent and care products as specified in the manufacturer's instructions.
- Clean the moisture sensor regularly → *Page 38*.

Sorting washing according to:

- Suitable for tumble drying
- Dry at normal temperature
- Dry at low temperature
- Do not tumble-dry

Note: Do not load laundry from the washing machine directly into the tumble dryer. Sort the spun laundry before placing it in the dryer drum.

If you dry thin, thick and multi-layer fabrics together, they will dry to differing degrees. To achieve an even drying result, you should therefore only dry together laundry of the same type of fabric and structure. If you feel that the laundry is still too damp, you can select a timed programme for subsequent drying → *Page 25*.

Caution!









Possibility of material damage to the dryer or laundry.







Do not tumble-dry the following fabrics:

- Laundry contaminated with oil.
- Unwashed fabrics.
- Non-breathable fabrics (e.g. rubber-coated).
- Easily damaged fabrics such as silk, synthetic curtains.

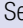
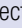
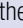
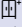


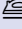

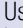

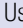
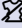


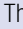

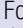
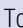
Programmes and buttons

Programmes

Programme and fabrics	Maximum load and programme settings/info
Name of the programme Which fabrics is the programme suitable for?	The maximum load is based on the dry weight of the fabrics Possible programme settings
Cottons  Hard-wearing fabrics, heat-resistant fabrics made of cotton or linen.	8 kg
Easy-Care  Synthetic or blended fabrics.	3.5 kg
Mixed Fabrics  Mixed load consisting of cotton and synthetic fabrics.	3 kg
Lingerie  For delicate, washable underwear, e.g. made of velvet, lace, Lycra, silk or satin.	1 kg
Wool in the basket  Fabrics made from wool or a wool blend that are suitable for tumble drying. Note: Only dry the fabrics using the basket for woollens → Page 29.	1.5 kg
Airing  Timed programme for all types of fabric except for wool and silk. All types of fabric. For freshening up or airing items of laundry that have not been worn frequently.	3 kg
MyTime  All types of fabric; timed programme. Suitable for pre-dried or slightly damp laundry and for drying off multi-layered, thick items of laundry.	3 kg
Shirts  Non-iron shirts or blouses made of cotton, linen, synthetic fibres or blended fabrics.	1.5 kg

Duvet 	2.5 kg
Fabrics, pillows, quilts or bedspreads filled with synthetic fibres. Dry large items individually. Observe the care label.	
Down Wear 	1.5 kg
Fabrics, pillows, bedspreads or eiderdowns filled with down. Dry large items individually.	
Outdoor 	1.5 kg
Weatherproof and outdoor clothing with a membrane coating and water-repellent fabrics.	
Towels 	6 kg
Hard-wearing towels made of cotton.	
Rapid 40 min 	2 kg
Synthetics and light cottons.	
Hygiene 	4 kg
Hard-wearing fabrics. Note: Particularly suitable for the highest hygiene requirements.	

Buttons on the touch display

Buttons on the touch display	Explanations and notes
Note:	Not all buttons and their functions can be selected in all programmes. The selected settings will be highlighted on the touch display. Touching a button repeatedly allows you to change or disable the selected setting.
Dryness level:	Select the dryness level  /  /  depending on the laundry to be dried.
 Cupboard dry plus	For multi-layered, thick laundry which is difficult to dry.
 Cupboard dry	Normal, single-layered laundry.
 Iron dry	Normal, single-layered laundry, which should still be damp after drying and is suitable for ironing or hanging up.
+1; +2; +3 (Finely adjusting the drying degree)	<p>If the laundry is still too damp when the drying programme has ended, you can adjust the drying degree to achieve a particular dryness level. To increase the dryness level, set the drying degree to from +1 to +3. This will extend the programme length but the temperature will remain the same.</p> <p>Touch a dryness level, e.g. , on the touch display until the required drying degree is shown.</p> <p>Once you have adjusted the drying degree, these settings will be retained even after the appliance has been switched off.</p>
 ("Ready in" time)	<p>Set the "Ready in" time to specify when a programme must end. This delays the start of the programme.</p> <p>Use the  selection buttons to alter the "Ready in" time. The required number of hours (up to a maximum of 24 hours) will appear on the display panel.</p>
 (Selection buttons)	Use the  selection buttons to select the "Ready in" time for all programmes, the programme length for the timed programmes, the appliance care programme, or the values for the appliance settings.
 120 min/60 min (Anti-Crease)	Once the programme has ended, the drum moves the laundry at regular intervals to prevent creasing. You can turn off Anti-Crease or change its duration.
 (Low-Heat Drying)	Low temperature for delicate fabrics, e.g. polyacrylic or elastane. May increase the length of the programme.
 3 sec (Childproof lock)	<p>The childproof lock prevents your chosen settings from being accidentally altered. To activate or deactivate the childproof lock, touch  3 sec on the touch display for 3 seconds.</p>
 (Quiet drying)	<p>For drying with no audible button tones or "programme end" signal. To activate or deactivate the audible button tones and "programme end" signal, touch  on the touch display.</p> <p>To alter the appliance settings, touch  on the touch display for 3 seconds.</p> <p>→ Page 36</p>

en Programmes and buttons

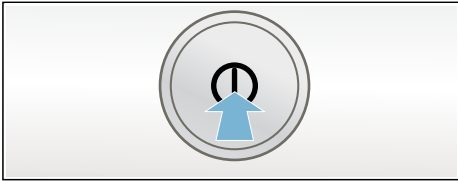
☆ (Favourite programme)	<p>Saves a programme with the programme settings you have chosen.</p> <p>Select a programme with the programme settings you require. To save this programme, touch ☆ on the touch display for 3 seconds. This programme will be retained even after the appliance has been switched off. Switch the appliance on and touch ☆ on the touch display to activate the saved programme.</p>
(Start/Pause) ▶ 	<p>Starts or pauses the programme.</p>



Operating the appliance

Loading laundry and switching on the dryer

Note: The dryer must be correctly positioned and connected, → *Page 14*.



1. Place the laundry in the drum.
2. Press the ① button to switch the dryer on.
3. Close the dryer door.

Caution!

Possibility of material damage to the dryer or laundry.

Take care not to trap any laundry in the door.

Note: The dryer drum is lit up after the door is opened and closed and once the programme has started. The drum interior light goes out on its own.

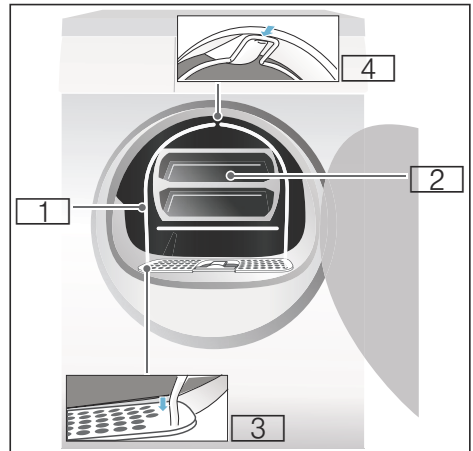
The basket for woollens

Note: The basket for woollens is supplied with your dryer* or it can be purchased as an accessory from the after-sales service.

Caution!

Risk of material damage to the dryer and fabrics.

Never operate the dryer if the basket for woollens is damaged.

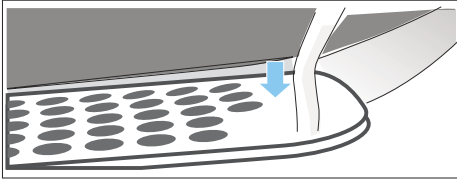


- 1 Basket for woollens
- 2 Insert for the basket for woollens
- 3 Recesses for mounting the basket for woollens
- 4 Notch for the basket for woollens

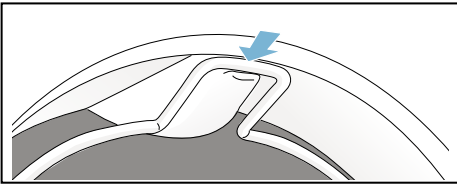
* Depending on the model

Drying with the basket for woollens

1. Insert the feet of the basket for woollens into the holes on the fluff filter.



2. Lean the basket for woollens against the upper notch.



The basket for woollens should now be firmly inserted in the drum.

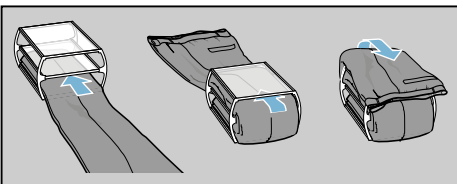
3. Place the required fabric in the insert of the basket for woollens

Notes

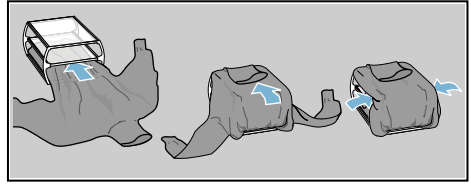
- Spin the fabrics before placing them in the insert.
- Place the laundry loosely in the insert. Do not squash the fabrics.

Application examples:

- a) **Trousers or skirt**

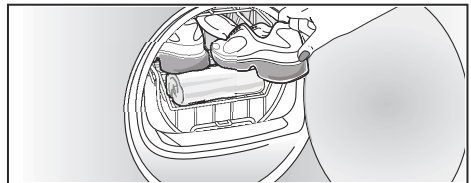


- b) **Pullover**



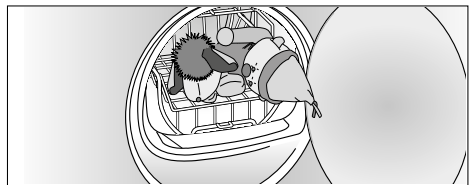
- c) **Sports shoes**

Place sports shoes in the basket for woollens **without** the insert. Pull out the tongues of the shoes and remove the insoles or heel cushions. Roll up a towel and place it under the sports shoes to create an inclined surface. Place the shoes so that the heels are on the towel.



- d) **Soft toys**

Dry soft toys in the basket for woollens without the insert. Only place as many soft toys in the basket for woollens as is possible without any falling out.

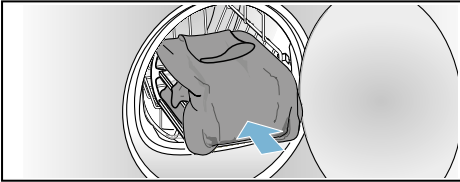


- Place the insert or the sports shoes in the basket for woollens.

Caution!

Risk of material damage to the fabrics.

Place the fabrics in the insert of the basket for woollens so that they do not come into contact with the drum.



- Use the programme selector to select the programme for the basket for woollens or a time programme.

- Set the drying time.

Thin woollen pullover:

Approx. 1:20 hrs

Thick woollen pullover:

Approx. 1:30 hrs - 3:00 hrs

Skirt: Approx. 1:00 hr - 1:30 hrs

Trousers: Approx. 1:00 hrs - 1:30 hrs

Gloves: Approx. 30 min

Sports shoes: Approx. 1:30 hrs/ with airing max. 2:00 hrs

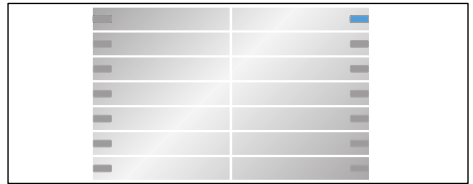
Note: For thicker or multi-layered fabrics, you must extend the drying time, as required, to achieve the required level of dryness.

- Start the programme.
- Remove the fabrics and switch off the dryer.

Setting a programme

Note: If you have activated the childproof lock, you must deactivate it before you can set a programme, see → Page 27.

- Select the required programme; detailed information on the programmes can be found from → Page 25 onwards.
- Set the required programme. The default programme settings for the selected programme will appear on the display panel.



Note: Default programme settings are standard settings that are already defined when a programme is selected. After selecting a programme, you will see the default programme settings on the display panel.

- If required, adjust the default programme settings. You can find detailed information on this from → Page 27 onwards.

Starting the programme

Press the Start button.

Note: If you want to lock the programme to prevent it from being adjusted inadvertently, you can select the childproof lock, see → Page 27.

Programme sequence

The programme status is displayed in the display field.

Changing the programme or adding laundry

You can remove or add laundry and change or alter the programme at any time during drying.

1. To pause the programme, open the dryer door or press the Start button.
2. Add or remove laundry.
3. Select another programme or an additional function, if required.
4. Close the dryer door.
5. Press the Start button.

Note: The programme duration in the display panel is updated depending on the load and residual moisture in the laundry. The values displayed may change after the programme is changed or the load is adapted.

Cancelling the programme

The programme can be interrupted at any time; to pause, open the dryer door or press the Start button.

Caution!


Risk of fire. Laundry may catch fire.

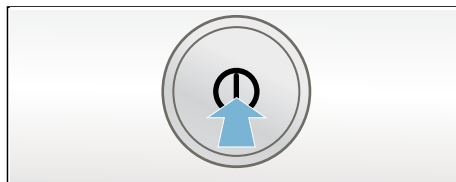
If you cancel the programme, you must remove the laundry items and spread them out so that the heat can disperse.

Programme end

End appears in the display panel.

Removing laundry and switching off the dryer

1. Remove the laundry.
2. Press the  button to switch the dryer off.



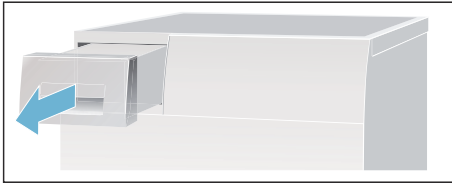
Emptying the condensate container

Notes

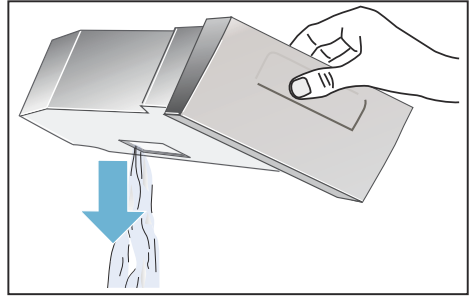
- You can drain off the condensation into the waste-water system using an optional condensation drain*. For installation, see → Page 15.
- If you drain the condensation using an optional condensation drain, you do not have to empty the condensate container.

Note: After each drying cycle, empty the condensate container; otherwise the next drying programme may be cancelled as a result of the condensate container being full.

1. Pull out the condensate container horizontally.



2. Pour out the condensation water.

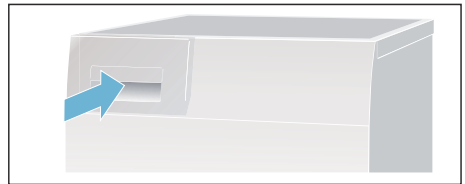


Caution!

Dirty condensation water may be harmful to your health and cause material damage.

Condensation water is not suitable for drinking and may be contaminated with fluff. Do not drink the condensation water or reuse it.

3. Push in the condensate container until you feel it lock back into place in the dryer.



Note: The filter in the condensate container filters the condensation which is used during the dryer's automatic cleaning cycle. The filter is cleaned by emptying the condensation. Nevertheless, you should check the filter regularly for remaining deposits and remove them. See → Page 38.

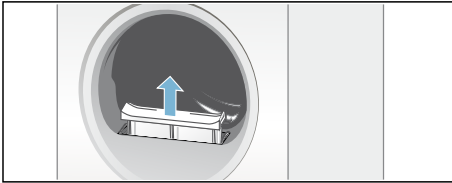
* Depending on the model

Clean the fluff filter

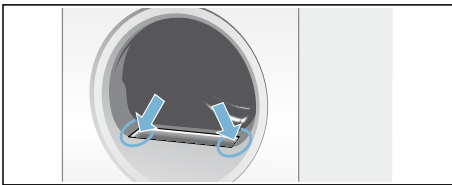
Note: During drying, fluff and hair from the laundry is trapped by the fluff filter. If the fluff filter is blocked or dirty, this reduces the flow of air, which prevents the dryer from achieving its maximum performance. Clean fluff filters also reduce energy consumption and the drying time.

Clean the fluff filter **after each** drying cycle:

1. Open the dryer door and remove all fluff from the door.
2. Pull out the two-part fluff filter.

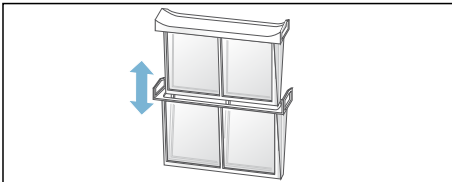


3. Remove the fluff from the recess in the fluff filter.

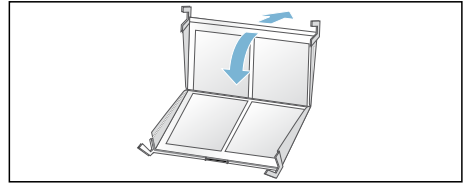


Note: Ensure that no fluff falls into the open shaft.

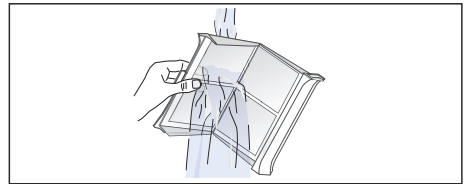
4. Pull apart the two-part fluff filter.



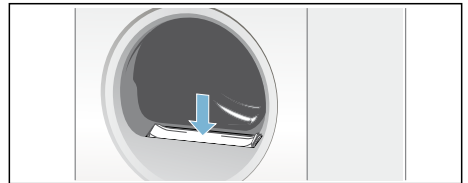
5. Open both filters and remove all the fluff.



6. Rinse away the fluff under warm, running water.



7. Dry the fluff filter, close it and reinsert the two-part fluff filter.



Caution!

The dryer may be damaged.

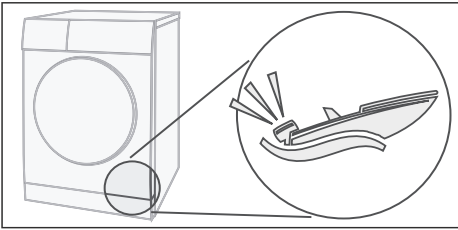
Do not operate the dryer without a fluff filter or if the fluff filter is defective.



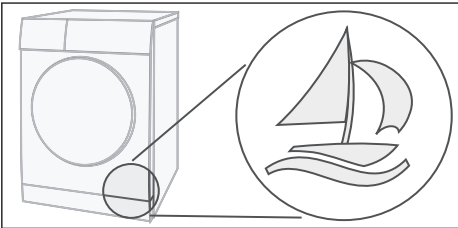
Noises

Note: During drying, particularly in the initial phase, operation of the appliance results in noise from the compressor and pump. This is perfectly normal and does not impair proper functioning of the appliance.

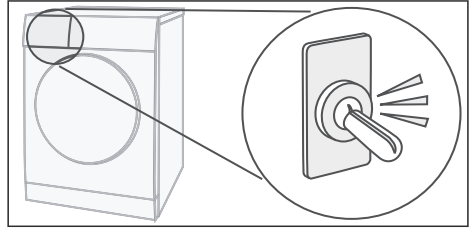
From time to time, the compressor in the dryer generates a humming noise. However, the volume may vary depending on the programme and progress of the drying process.



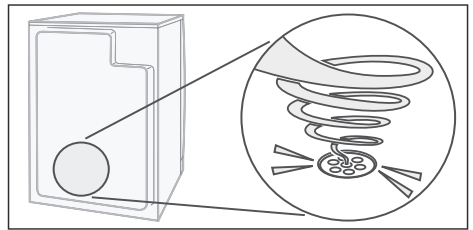
Every now and then, the compressor is ventilated. This creates a whirring noise.



The automatic cleaning of the dryer causes a clicking sound.



The condensation is pumped into the condensate container by a pump. This generates pumping noises.




Appliance settings

You can alter the following appliance settings on the control panel:

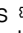
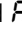
- The volume of the information signals (e.g. at the end of the programme)
- The volume of the operating signals
- The brightness of the touch display

To alter the appliance settings, activate setting mode.

Activating the setting mode

1. Switch the appliance on if it is off.
2. Touch  on the touch display for 3 seconds.

This activates setting mode.

The symbols for settings  and  will appear on the touch display, along with the current volume of the information signals.

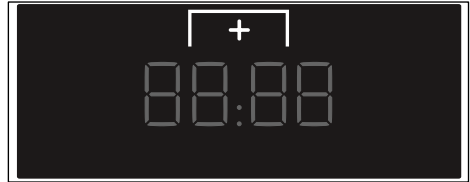
The programme in position 1 is selected.



3. Now alter the appliance settings.

Adjusting the volume of the information signals

1. Touch the + selection button until the required value appears.



Setting values:


- 0 Off
- 1 Quiet
- 2 Medium
- 3 Loud
- 4 Very loud

2. You can now either end setting mode or continue with it.

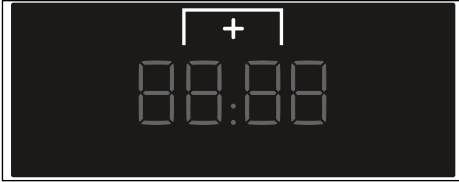
Adjusting the volume of the operating signals

1. Select the programme in position 2.



 will now appear on the touch display, along with the current volume of the operating signals.

2. Touch the + selection button until the required value appears.

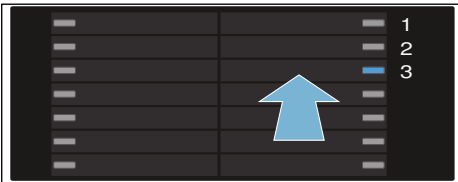


Setting values:

- 0 Off
 - 1 Quiet
 - 2 Medium
 - 3 Loud
 - 4 Very loud
3. You can now either end setting mode or continue with it.

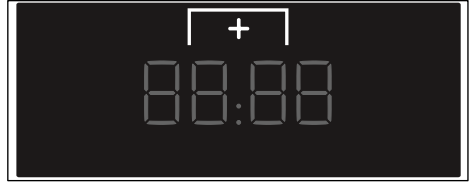
Adjusting the brightness of the touch display

1. Select the programme in position 3.



⌂ will now appear on the touch display, along with the current touch display brightness level.

2. Touch the + selection button until the required value appears.



Setting values:

- 1 Dim
- 2 Normal level of brightness
- 3 Bright
- 4 Very bright

Exiting setting mode

To exit and save the settings:

- Touch ⌂ on the touch display or:
- Wait approximately 10 seconds or:
- Switch off the appliance. The selected settings will be retained even after the appliance has been switched off.



Cleaning

Cleaning the dryer and the control panel



Warning

Risk of death!

There is a risk of electric shock as the dryer is operated with electricity. Disconnect the dryer from the mains before cleaning.

Clean the dryer using only water and a soft, damp cloth.

Remove all detergent residue, spray residue or other residues immediately. Do not use cleaning agents or agents for pre-treating laundry (e.g. prewash sprays, stain removers). Do not use high-pressure cleaners or steam jet cleaners to clean your appliance.

Cleaning the moisture sensor

Note: The dryer is equipped with a stainless-steel moisture sensor. The moisture sensor measures how damp the laundry is.

After long periods of usage the moisture sensor may become covered by a fine layer of limescale or residues of detergents and care products. Such residues must be removed regularly as the sensor function and in consequence the drying result may be impaired.

Open the door and clean the moisture sensor with a coarse sponge.



Caution!

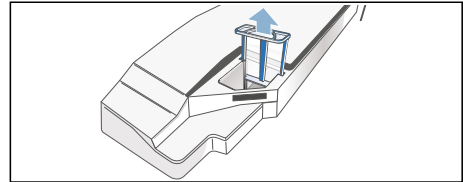
Moisture sensor may be damaged.

Do not clean moisture sensors with abrasives and steel wool.

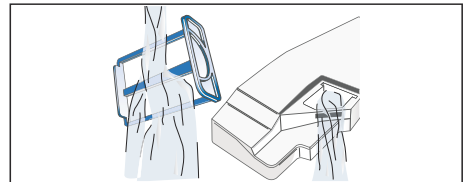
Cleaning the filter in the condensate container

Note: The filter in the condensate container cleans the condensation water that is used during the dryer's automatic cleaning cycle.

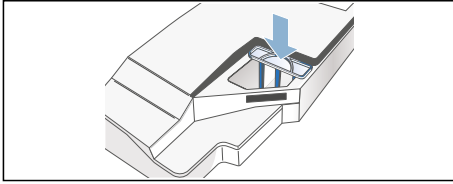
1. Pull out the condensate container horizontally.
2. Pour out the condensation water.
3. Remove the filter.



4. Clean the filter under warm, running water or in the dishwasher.



5. Push in the filter until you feel it lock into place.



Caution!

The dryer may be contaminated with fluff and thus become damaged.

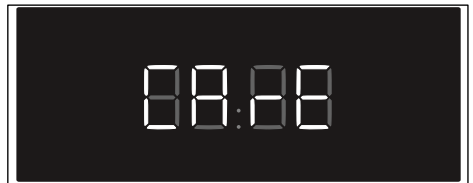
Only operate the dryer with the filter inserted.

6. Push in the condensate container until you feel it lock into place.

Basic appliance care programme

To ensure that you achieve optimal drying results again and again, you can run the basic appliance care programme.

Note: After a certain period, your appliance will automatically recommend that you run the basic appliance care programme. It will do this in the form of a message, **CARE**, which will be shown on the display panel before the programme starts for 5 seconds, and again once it has ended. This message will appear repeatedly until you have run the basic appliance care programme through to the end.



Caution!

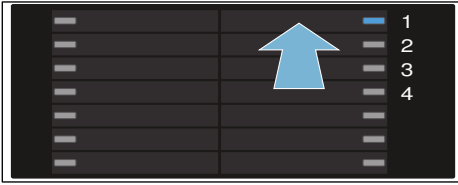
Material damage/damage to the appliance


Boiling water may damage the appliance and the condensation container. Do not pour boiling water into the condensation container.

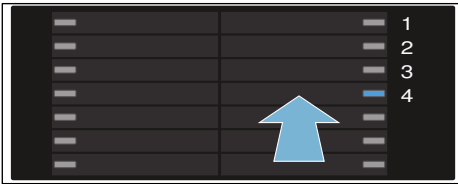
To start the appliance care programme:

1. Switch the appliance on if it is off.
2. Remove all items of laundry.

3. Select the programme in position 1.



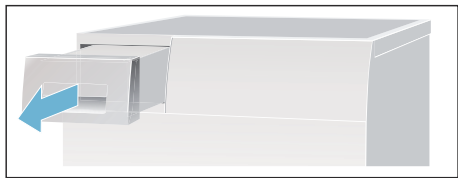
4. Touch and hold the Iron Dry  button, and select the programme in position 4.



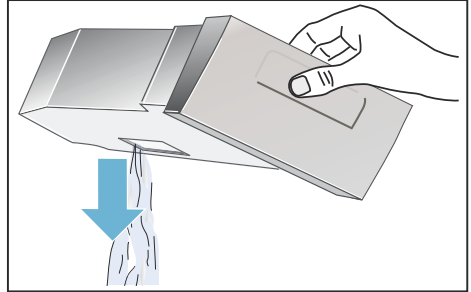
CP and the programme length will now alternate on the display panel.



5. Pull out the condensation container horizontally.



6. Pour out the condensation water.

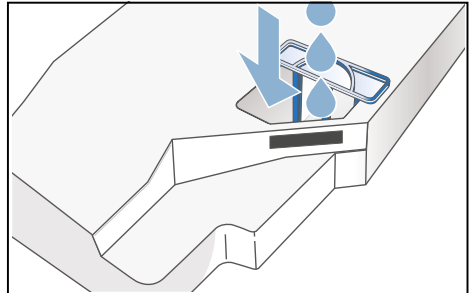


Caution!

Dirty condensation water may be harmful to your health and cause material damage.

Condensation water is not suitable for drinking and may be contaminated with fluff. Do not drink the condensation water or reuse it.

7. Pour approximately 1 ½ litres of hot tap water into the empty condensation container.



Note: Hold the full condensation container horizontally at all times so that no liquid spills out.

8. Push the full condensation container horizontally into the dryer until you feel it lock into place.
 9. Press the Start button.
The appliance care programme will start and an audible signal will sound. Once the appliance care programme has ended, **End** will appear on the display panel and an audible signal will sound.
 10. Pull out the condensation container.
 11. Empty the condensation container, reinsert it fully and switch off the dryer.
- You have now completed the appliance care programme.

Intensive appliance care programme

Before leaving your dryer unused for an extended period, e.g. before going on holiday, you should run the intensive appliance care programme. This prevents unpleasant odours from building up in the appliance.

Notes

- The intensive appliance care programme runs for approximately 4 hours. During this time, there are a few things you will need to do. Do not cancel the programme once it has started. Please bear this in mind before you start up the intensive appliance care programme.
- When you run the intensive appliance care programme, you will need to use an appliance care product. This can be ordered from our after-sales service using spare part number **00311829**. Contact information for all countries can be found in the enclosed after-sales service directory.

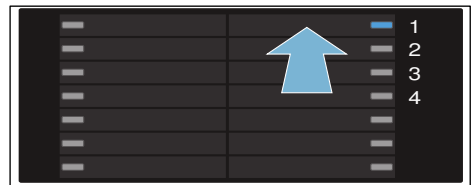
Caution!


Material damage/damage to the appliance

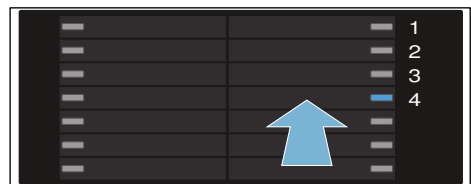
- If you pour the wrong quantity of detergent or cleaning agent into the appliance, this may result in material damage or damage to the appliance.
Use detergents/care products/cleaning agents and softeners in accordance with the manufacturers' instructions.
- Boiling water may damage the appliance and the condensation container. Do not pour boiling water into the condensation container.

To start the appliance care programme:

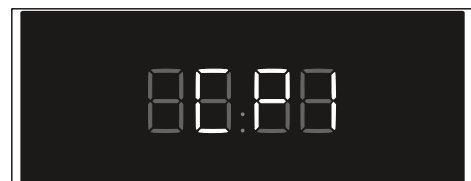
1. Switch the appliance on if it is off.
2. Remove all items of laundry.
3. Select the programme in position 1.



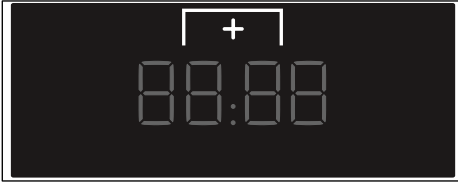
4. Touch and hold the Iron Dry  button, and select the programme in position 4.



CP and the programme length will now alternate on the display panel.



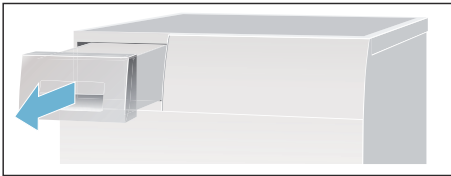
5. Touch the + selection button.



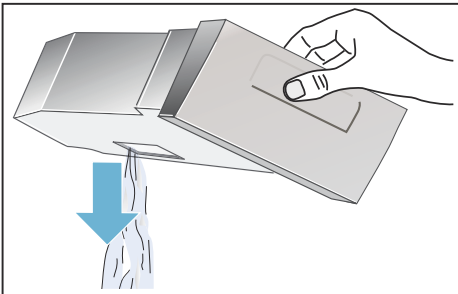
CPZ and the programme length will now alternate on the display panel.



6. Pull out the condensation container horizontally.



7. Pour out the condensation water.

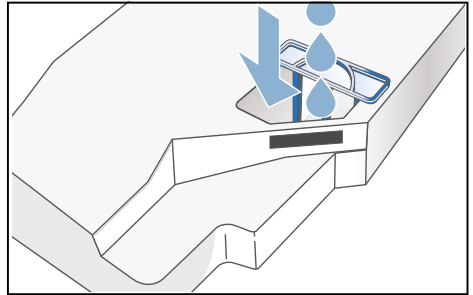


Caution!

Dirty condensation water may be harmful to your health and cause material damage.

Condensation water is not suitable for drinking and may be contaminated with fluff. Do not drink the condensation water or reuse it.

8. Pour a bottle of the care product and 1 ½ litres of hot tap water into the condensation container.



Note: Hold the full condensation container horizontally at all times so that no liquid spills out.

9. Push the full condensation container horizontally into the dryer until you feel it lock into place.

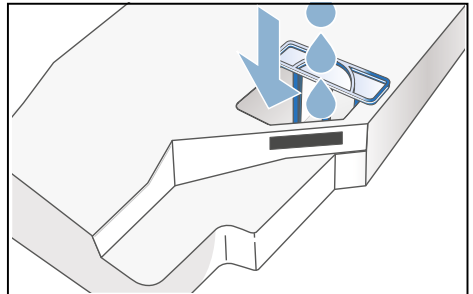
10. Press the Start button.

The appliance care programme will start and an audible signal will sound.

After a while, the remaining programme time will flash on the display panel.

11. Pull out the condensation container.

12. Pour approximately 1 ½ litres of hot tap water into the empty condensation container.



Note: Hold the full condensation container horizontally at all times so that no liquid spills out.

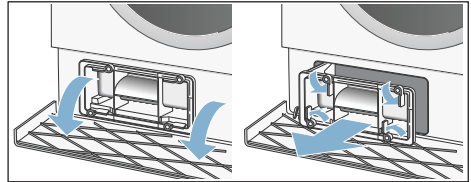
13. Carefully tilt the condensation container back and forth to rinse away any remaining care product, and then empty the condensation container completely.

14. Pour approximately 1 ½ litres of hot tap water into the empty condensation container again.
 15. Push the full condensation container horizontally into the dryer until you feel it lock into place.
 16. Press the Start button.
The appliance care programme will be resumed.
Once the appliance care programme has ended, *End* will appear on the display panel and an audible signal will sound.
 17. Pull out the condensation container.
 18. Empty the condensation container, reinsert it fully and switch off the dryer.
- You have now completed the appliance care programme.

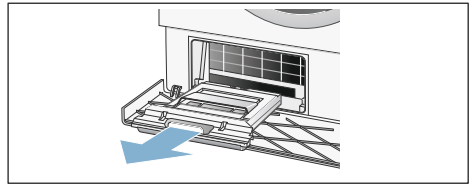
Cleaning the air shaft

To ensure that you achieve optimal drying results again and again, you can clean the air shaft. To clean the air shaft:

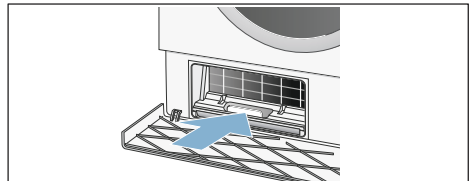
1. Open the maintenance flap.
2. Unlock the levers on the cover, then take hold of the gripping area on the cover and pull it out.



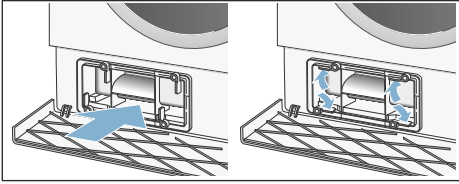
3. Use a soft brush to clean the cover.
Note: When cleaning the cover, make sure that no dirt or debris is left on the seal.
4. Pull out the insert horizontally.



5. Rinse the insert under running water.
6. Remove any fluff or debris that has found its way into the air shaft.
7. Slide the insert back in as far as it will go.

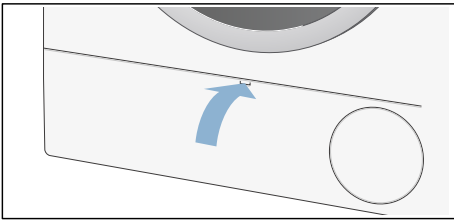


8. Push the cover back in and lock the levers on the cover.



Note: You cannot push the cover back in until you have slid the insert back in.

9. Close the maintenance flap.





You have now cleaned the air shaft.

Caution!
Material damage/damage to the appliance

If the appliance overheats, it may not be able to operate properly, or this may result in material damage or damage to the appliance.

Make sure that the appliance's air inlet is never obstructed when the appliance is in operation, and that the area around the appliance is adequately ventilated.

Faults and what to do about them

Faults	Cause/remedy
 on the display panel and drying has been interrupted.	<ul style="list-style-type: none"> ■ Empty the condensation container and press the Start button. ■ Clean the filter in the condensation container → <i>Page 38</i>. ■ Run the intensive appliance care programme → <i>Page 41</i>. ■ Check that there is no debris blocking the air shaft or the supply line to the pump. Open the maintenance flap to remove any debris → <i>Page 43</i>. ■ If the optional condensation drain has been installed, the drain hose may be blocked or kinked. If the optional condensation drain has been installed, the drain hose may be blocked or kinked. Check the hose for deposits and flush the hose through. Lay the hose without any kinks.
 on the display panel.	Clean the fluff filter → <i>Page 34</i> .
Dryer will not start.	<ul style="list-style-type: none"> ■ Start button selected? ■ Mains plug plugged in or fuse/circuit breaker checked? ■ Programme selected? Select a programme. ■ Dryer door open? Close the door. ■ Is the childproof lock activated? Deactivate the childproof lock. ■ "Ready in" time selected? Programme starts after a delay.
Creasing.	<ul style="list-style-type: none"> ■ Creasing occurs when you have exceeded the maximum load or selected the wrong programme for the type of fabric. All the required information can be found in the programme table. ■ Remove clothing from the dryer as soon as the drying programme has ended. Creasing occurs when clothing is left in the drum.
Water is leaking out.	<ul style="list-style-type: none"> ■ Not a fault; the dryer may be positioned on an incline. Level the dryer. ■ Check that there is no dirt or debris on the cover's seal. Clean the cover's seal → <i>Page 43</i>.
Programme duration displayed changes during drying.	Not a fault. The moisture sensors detect the remaining moisture in the load and adjust the programme length accordingly (except timed programmes).
* Depending on the model	

Faults	Cause/remedy
Laundry is not dried properly or is still too damp.	<ul style="list-style-type: none"> ■ After the programme has ended, warm laundry feels damper than it actually is. Spread the laundry out and allow the heat to disperse. ■ Finely adjust the drying degree. This will extend the programme length but the temperature will remain the same. Your laundry will become drier . ■ Select a programme with a longer drying time or increase the dryness level. This does not increase the temperature. ■ Select a timed programme to add extra drying time for laundry that is still damp → <i>Page 25</i>. ■ If you have exceeded the maximum load for the programme, the laundry may not be dried properly. ■ Clean the moisture sensor in the drum. The sensor may become covered in a fine layer of limescale or detergent and care product residue, which then impairs its performance. This prevents your laundry from being dried properly → <i>Page 38</i>. ■ Drying has been interrupted as a result of a power cut, because the condensation container is full or because the maximum drying time has been exceeded. <p>Note: See also the laundry tips → <i>Page 24</i>.</p>
Drying time too long?	<ul style="list-style-type: none"> ■ The fluff filter may be clogged with debris, which will make the drying time longer. Clean the fluff filter. ■ The heat exchanger may have fluff in it. Run the basic appliance care programme → <i>Page 39</i>. ■ If the air inlet on the dryer is blocked or not freely accessible, this may increase the drying time. Make sure that the air inlet remains unobstructed. ■ The optimum ambient temperature for drying is between 15 °C and 30 °C. Outside of this range, the drying time may increase. ■ Insufficient air circulation in the room may increase the drying time. Ventilate the room.
Display panel goes out and Start button flashes.	Not a fault. Energy-saving mode is active → <i>Page 13</i> .
Humidity in the room is increasing.	Not a fault. Make sure the room is adequately ventilated.
Power cut.	The drying programme is interrupted. Remove the laundry and spread it out, or restart the programme.
Unpleasant odour in the appliance.	Run the intensive appliance care programme → <i>Page 41</i> .
Unusual noises when drying.	Not a fault; see also → <i>Page 41</i> .
The dryer feels cold despite drying.	Not a fault. The dryer can dry effectively at low temperatures using a heat pump.
* Depending on the model	

Note: If you cannot rectify the fault yourself by turning the dryer off and then on again, please contact our after-sales service.



After-sales service

After-sales service

If you cannot rectify the fault yourself (faults, what to do?), please contact our after-sales service. We will always find an appropriate solution to avoid unnecessary visits by engineers.

The contact information for your nearest after-sales service can be found here or in the enclosed after-sales service directory.

Please provide after-sales service with the dryer's product number (E-no.) and production number (FD).

E-Nr. _____ FD _____

You can find this information on the inside of the dryer door or on the rear of the dryer.

Trust the expertise of the manufacturer.

Contact us. You can therefore be sure that the repair is carried out by trained service technicians who carry original spare parts.




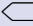
Consumption values

Consumption values table

Programme	Spin speed used for spinning the laundry	Duration**		Energy consumption**	
		8 kg	4 kg	8 kg	4 kg
Cottons					
Cupboard Dry*	1400 rpm	126 min	80 min	1.24 kWh	0.70 kWh
	1000 rpm	148 min	94 min	1.46 kWh	0.82 kWh
	800 rpm	170 min	108 min	1.68 kWh	0.94 kWh
Iron Dry*	1400 rpm	95 min	60 min	0.91 kWh	0.52 kWh
	1000 rpm	117 min	74 min	1.13 kWh	0.64 kWh
	800 rpm	139 min	88 min	1.35 kWh	0.76 kWh
Easy-Care		3.5 kg		3.5 kg	
Cupboard Dry*	800 rpm	55 min		0.43 kWh	
	600 rpm	66 min		0.53 kWh	
* Programme setting for testing in accordance with the applicable EN 61121 standard.					
** The values may differ from those specified, depending on the type of fabric, composition of laundry to be dried, residual moisture in the fabric, the degree of dryness that has been set, the amount of laundry being loaded and the environmental conditions.					

Most efficient programme for cotton fabrics

The following "standard cottons programme" (identified with ) is suitable for drying normal, wet cotton laundry and is most efficient in terms of its combined energy consumption for drying wet cotton laundry.

Standard programme for cottons in accordance with current EU regulation 932/2012			
Programme + Drying level	Load	Energy consumption	Programme duration
 Cottons + Cupboard Dry	8 kg/4 kg	1.46 kWh/0.82 kWh	148 min/94 min
Programme setting for testing and energy labelling in accordance with Directive 2010/30/EU			



Technical data

Dimensions:

85 x 60 x 64 cm

Height x width x depth

Weight:

Approx. 56 kg

Maximum load:

8 kg

Condensate container:

4.5 l

Connected voltage:

220 - 240 V

Connected load:

Max. 800 W

Fuse:

10 A

Drum interior light***Ambient temperature:**

5 - 35 °C

**Power consumption when
switched off:**

0.10 W

**Power consumption when
ready for use (left-on mode):**

0.10 W

* Depending on the model



A series of horizontal lines for writing, starting with a solid line immediately below the pencil icon, followed by a dashed line, and then alternating between solid and dashed lines for the remainder of the page.

Repair order and advice in the event of faults

GB 0344 892 8999 (Calls charged at local or mobile rate.)

IE 01450 2655 (0.03 € per minute at peak. Off peak 0.0088 € per minute.)

You can find the contact information for all countries in the attached after-sales service directory.

BSH Hausgeräte GmbH

Carl-Wery-Straße 34

81739 München

GERMANY

siemens-home.com

Manufactured by BSH Hausgeräte GmbH under Trademark License of Siemens AG



9001154438 (9602)