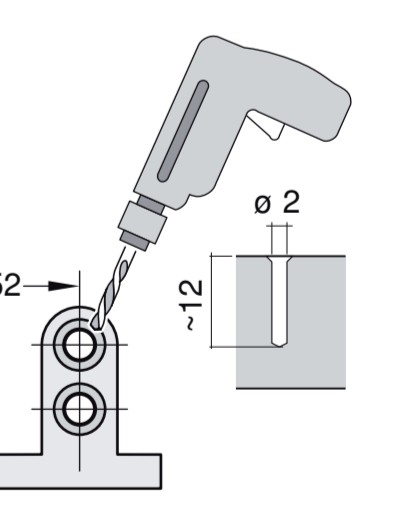
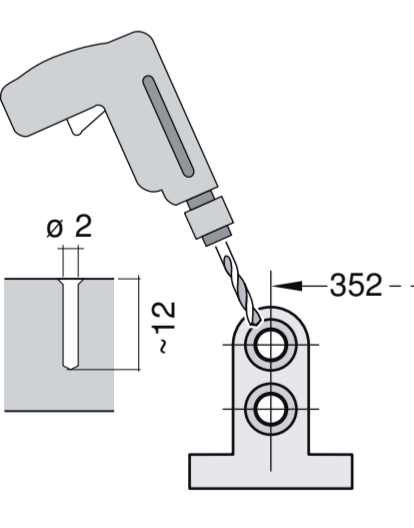
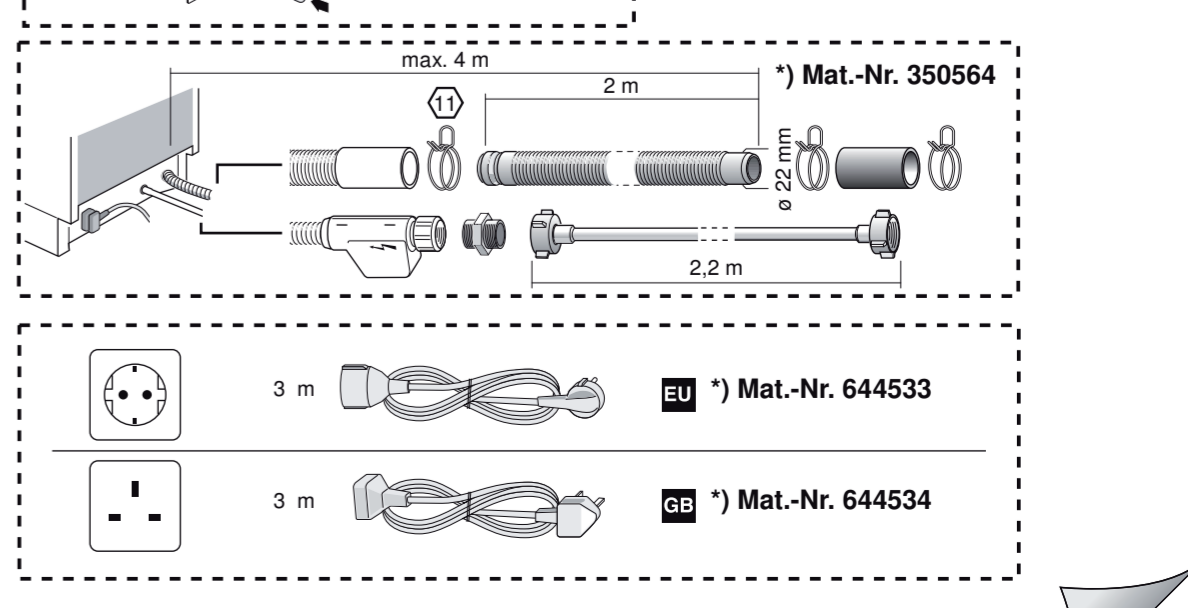
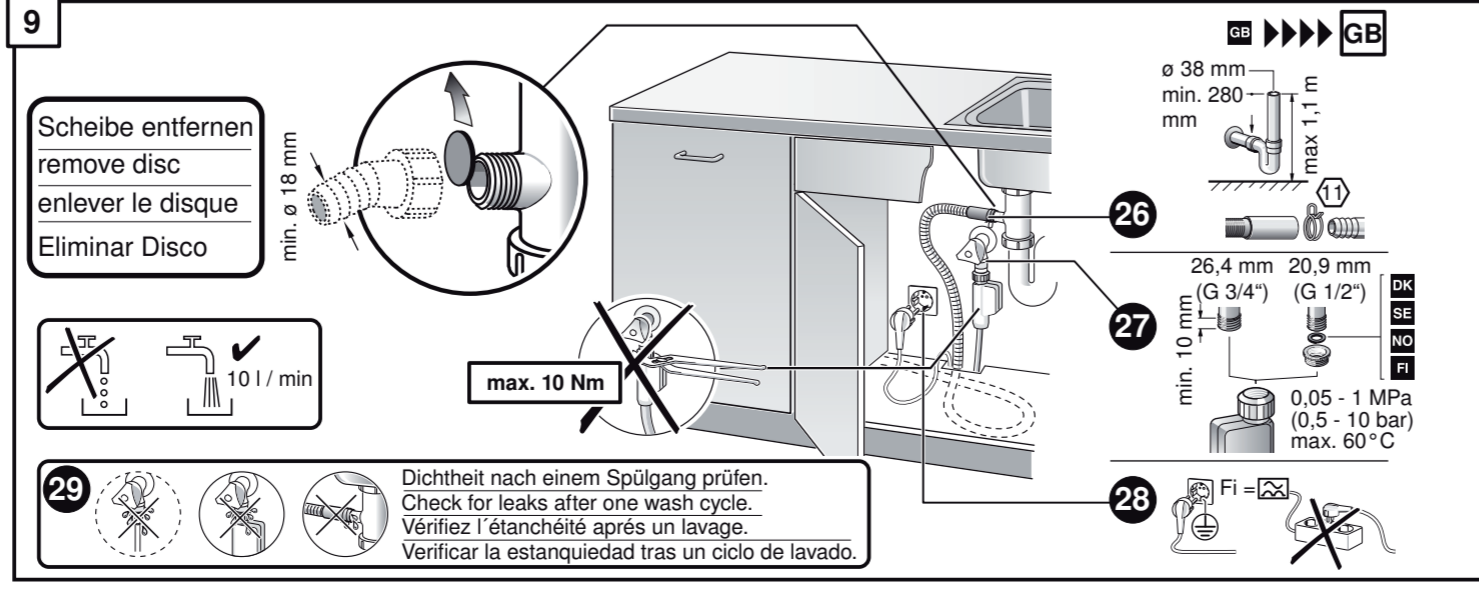
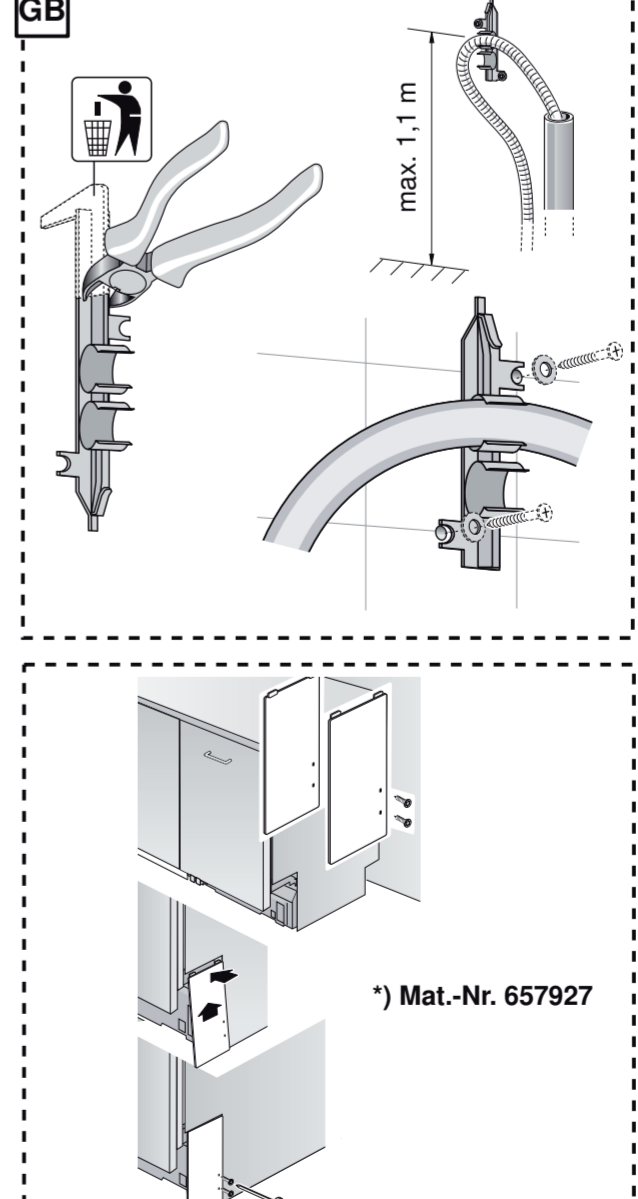
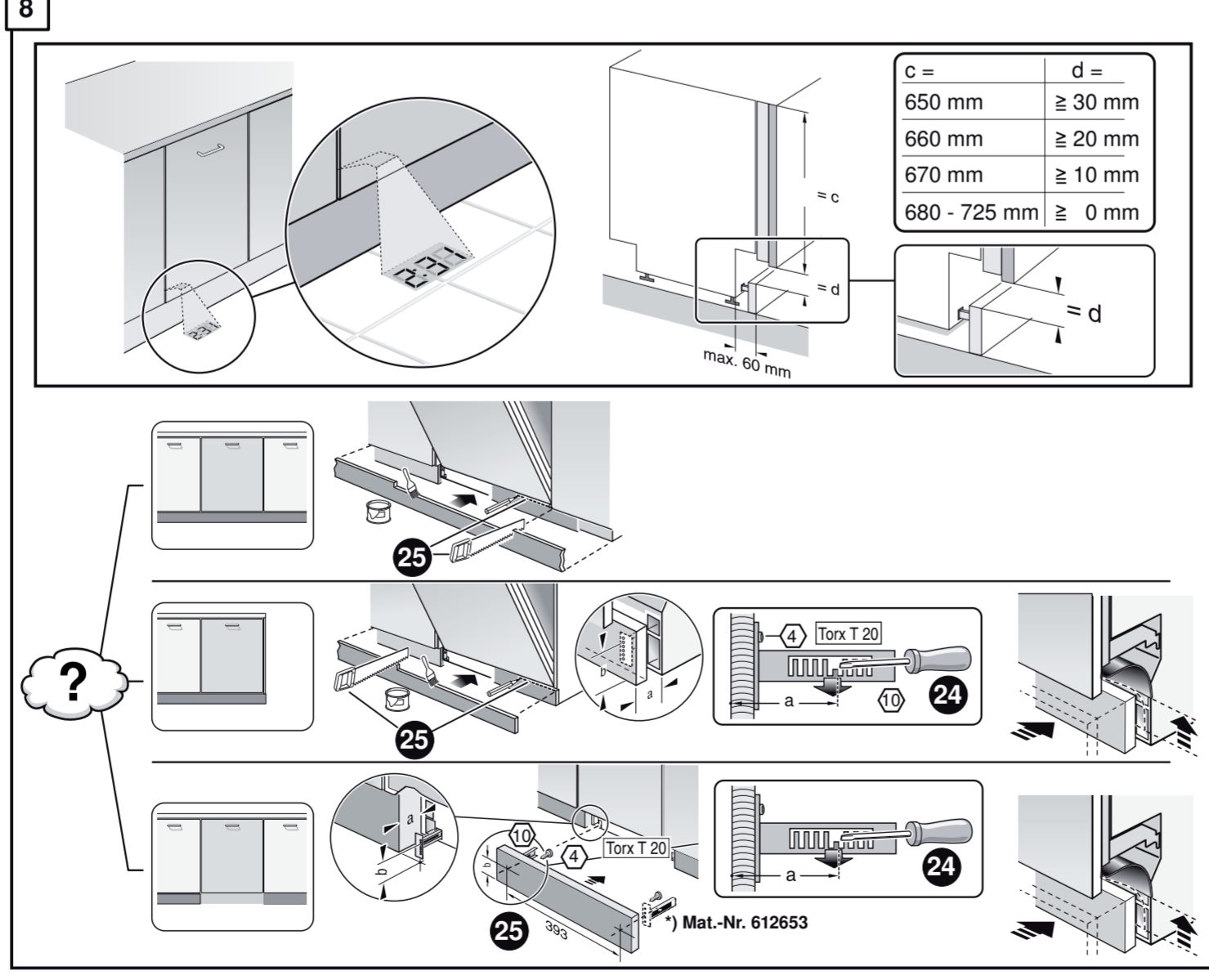
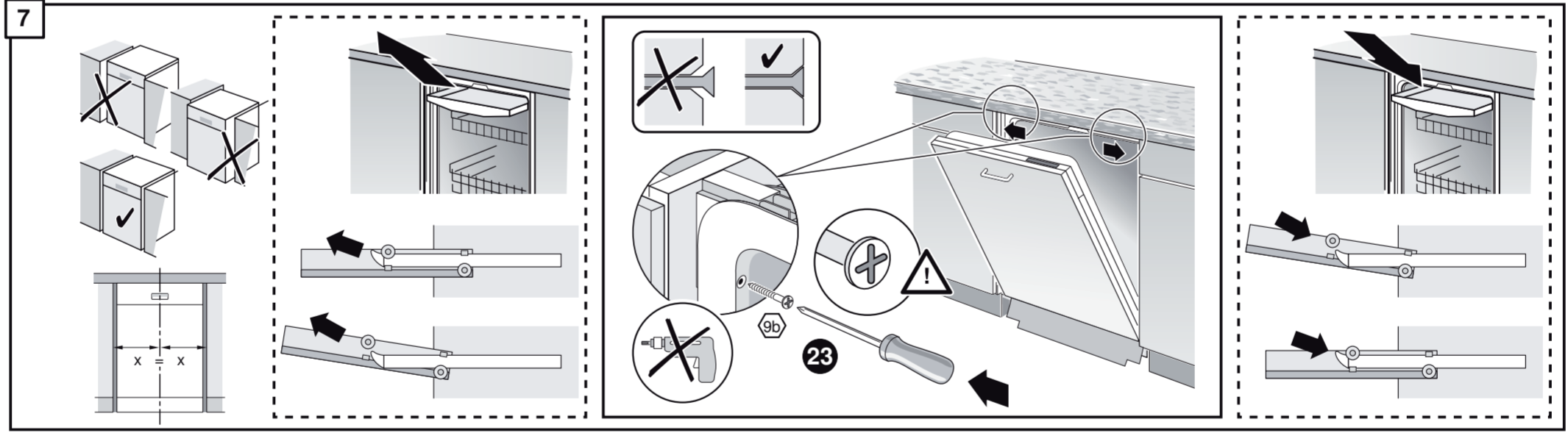
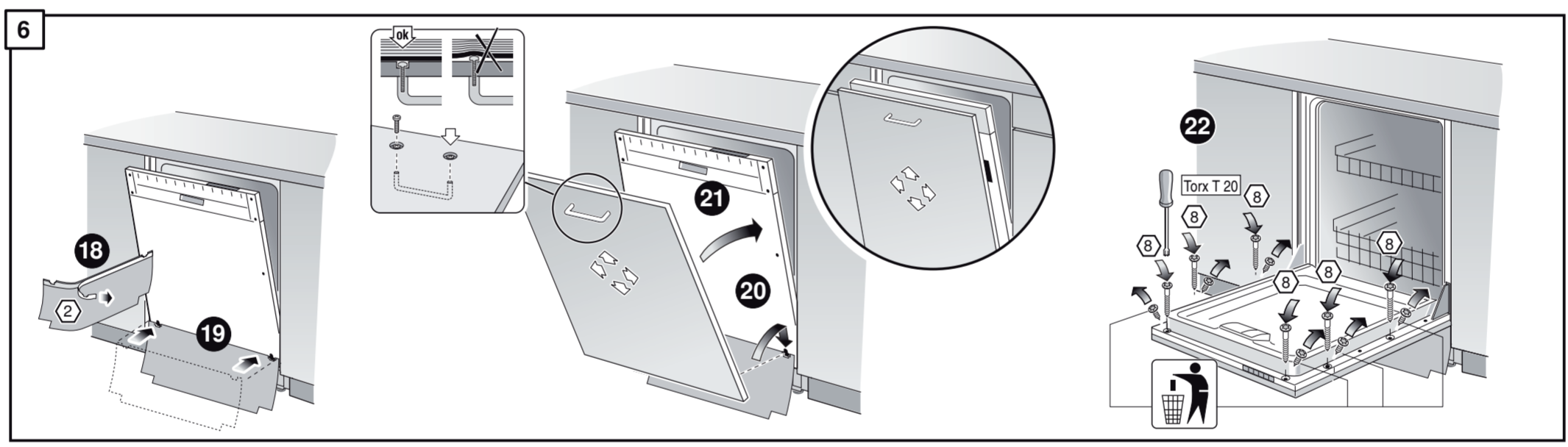
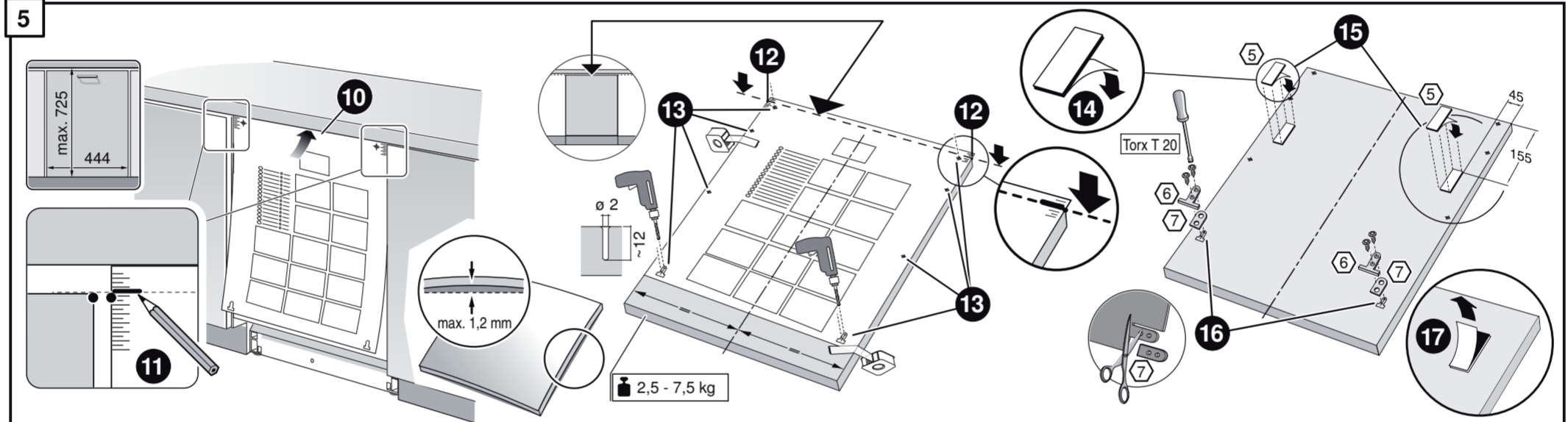
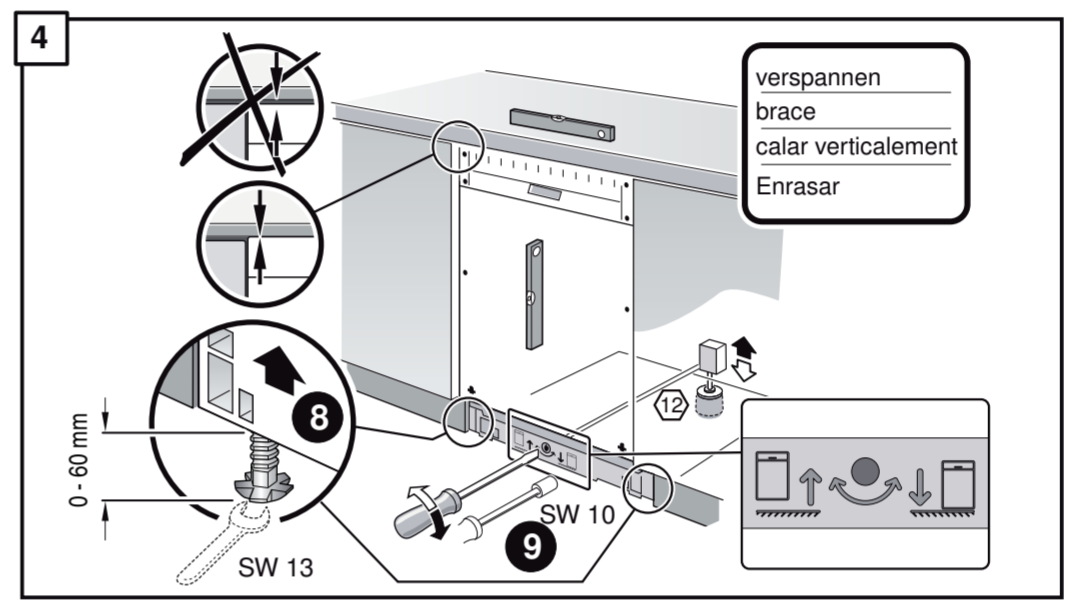
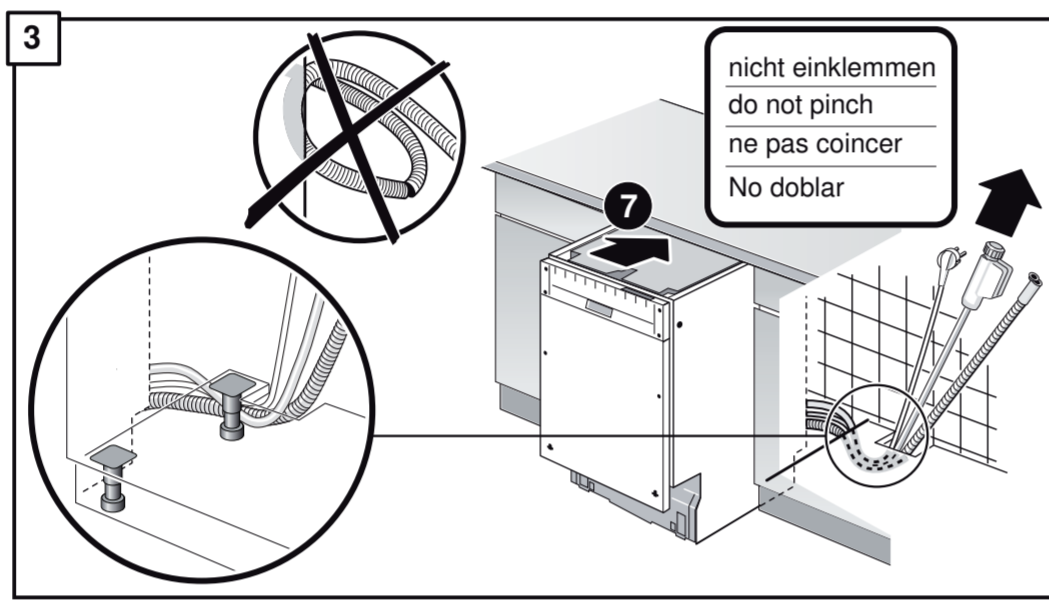
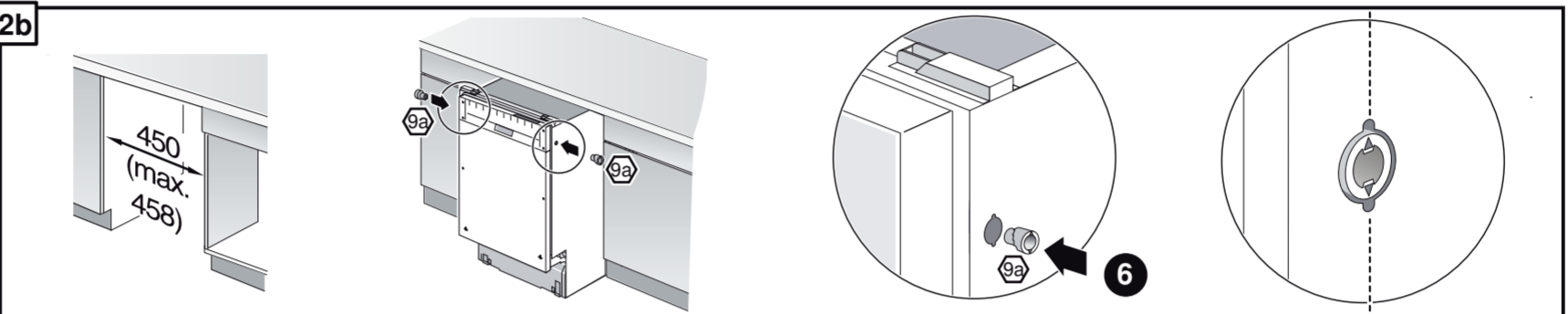
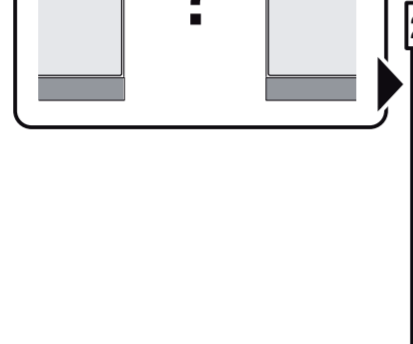
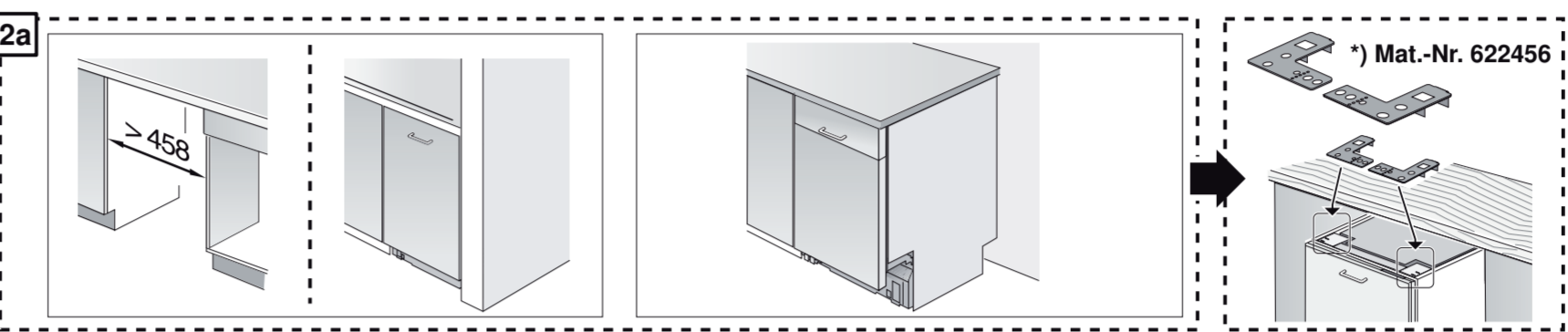
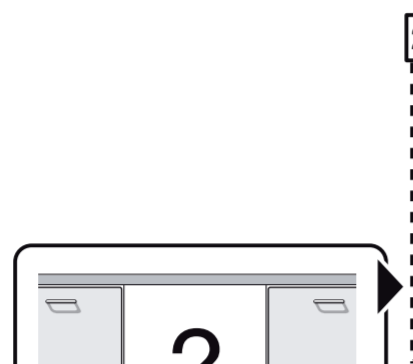
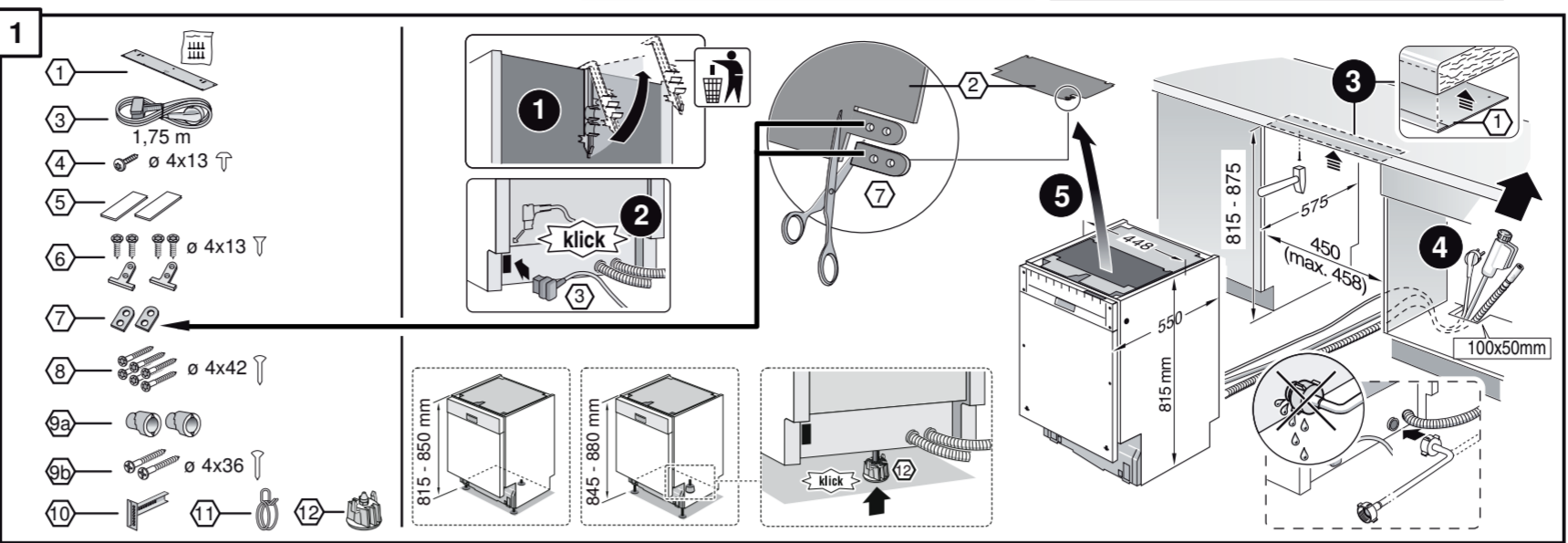
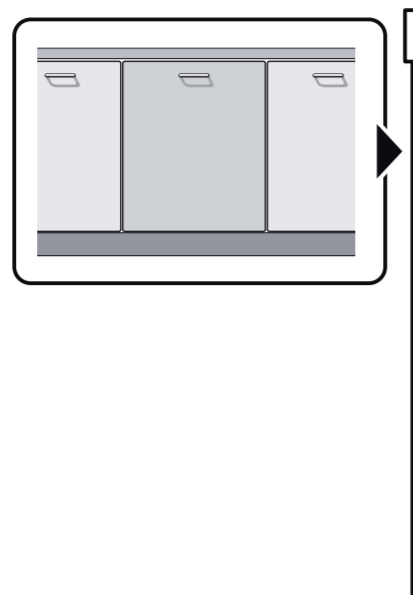
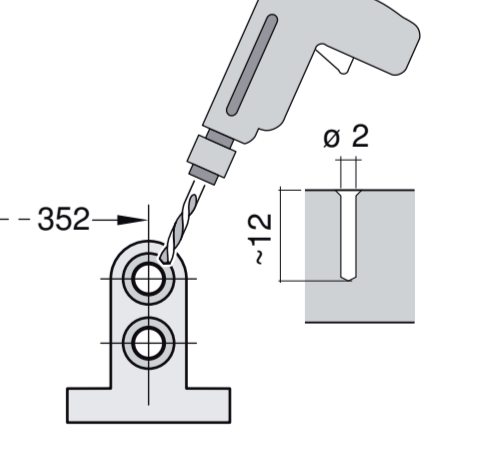
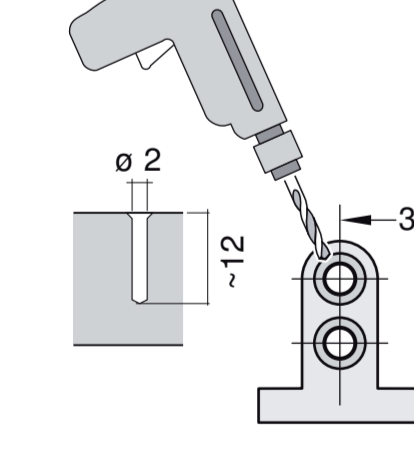
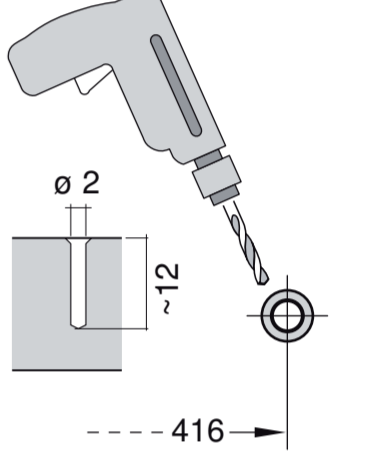
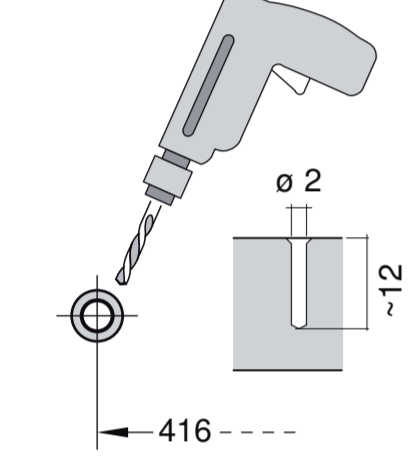
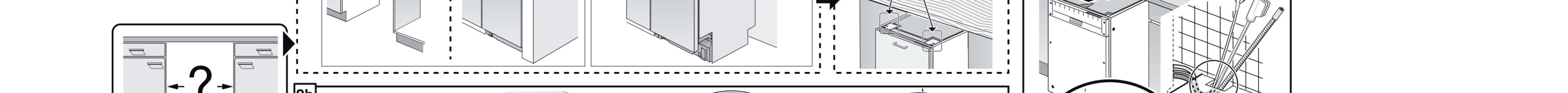
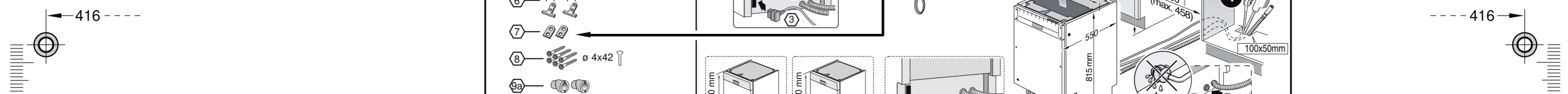


GV 440 Voll-I - mit GS - Zeolith 9001 104 821 (9505)

- de** Montageanleitung
*) Über Kundendienst erhältlich
- en** Installation instructions
*) Available from customer service
- fr** Notice de montage
*) Disponible par le biais du service après-vente
- nl** Montagevoorschrift
*) Tegen meerprijs bij de Servicedienst verkrijgbaar
- it** Istruzioni per il montaggio
*) Disponibili presso il servizio assistenza clienti
- el** Οδηγίες τοποθέτησης
*) Διαθέσιμα από την υπηρεσία τεχνικής εξυπηρέτησης πελατών
- es** Instrucciones de montaje
*) Se puede adquirir a través del Servicio de Asistencia Técnica Oficial de la marca
- pt** Instruções de montagem
*) Pode ser adquirido nos nossos Serviços Técnicos
- sv** Monteringsanvisning
*) Kan fås via Service
- no** Monteringsanvisning
*) fåes hos kundeservice
- fi** Asennusohje
*) Saatavissa huoltopalvelusta
- da** Monteringsvejledning
*) Kan købes hos serviceafdelingen
- lt** Montaj klavuzu
*) Yetkili servis üzerinden alınabilir
- ru** Инструкция по монтажу
*) Можно получить в сервисном центре
- cs** Montážní návod
*) K dispozici přes servisní službu
- pl** Instrukcja montażu
*) Do uzyskania w punkcie serwisowym
- hu** Szerelési utasítás
*) A végsőszigetelést keresztül kapható:
- tr** Uputa za montažu
*) može dobiti kod službe održavanja
- uk** Упутство за монтажу
*) се добија преку службата за купувачи
- sl** Navodilo za montažo
*) lahko nabavite v servisni službi
- hr** Uputstvo za montažu
*) Može se nabaviti preko servisne službe
- et** Monteerimisjuhend
*) Kusige klientiteeninduselt
- lv** Montavimo instrukcija
*) Ja galima gauti klientų aptarnavimo servise
- lv** Montāžas pamācība
*) Var saņemt servisa dienestā
- sk** Návod na montáž
*) Dostanete v službe zákazníkom
- sq** Udhëzues për montim
*) Sigurohet nëpërmjet servisit
- bs** Uputa za montažu
*) Može se dobiti preko servisne službe
- fa** راهنمای مونتاژ
*) از مرکز خدمات پس از فروش تهیه فرمایید
- ar** تعليمات التركيب
*) يمكن طلبها من مركز خدمة العملاء
- ko** 설치 설명서
*) 고객센터 서비스 센터에서 구입 가능
- zh** 安裝說明書
*) 可向售後服務站索取。
- uk** Інструкція з монтажу
*) Можна отримати через сервісну службу
- ro** Instrucțiune de montaj
*) obținabilă la serviciul pentru clienți
- id** Intruksi Pemasangan
*) bisa didapatkan melalui Customer Service
- kk** Іске қосу туралы нұсқаулар
*) Сервис қызметі көрсету орталығында алуына жатады





1

- 1: 1.75 m
- 2: ø 4x13
- 3: ø 4x13
- 4: ø 4x13
- 5: ø 4x13
- 6: ø 4x13
- 7: ø 4x13
- 8: ø 4x42
- 9a: ø 4x36
- 9b: ø 4x36
- 10: ø 4x36
- 11: ø 4x36
- 12: ø 4x36

*) Mat.-Nr. 622456

2a

2b

3

nicht einklemmen
do not pinch
ne pas coincier
No doblar

4

verspannen
brace
calar verticalment
Enrasar

0-60 mm

SW 13

SW 10

5

max. 725

444

11

6

12

13

14

15

16

17

18

19

20

21

22

23

24

25

26

27

28

29

30

31

32

Torx T 20

max. 2,5 - 7,5 kg

7

max. 1,2 mm

21

22

23

24

25

8

9

c = 650 mm	d = ≥ 30 mm
660 mm	≥ 20 mm
670 mm	≥ 10 mm
680 - 725 mm	≥ 0 mm

max. 60 mm

27

28

29

30

31

32

Torx T 20

*) Mat.-Nr. 612653

10

*) Mat.-Nr. 657927

10

Scheibe entfernen
remove disc
enlever le disque
Eliminar Disco

min. ø 19 mm

max. 10 Nm

0,05 - 1 MPa
(0,5 - 10 bar)
max. 60°C

FI = 25

29

30

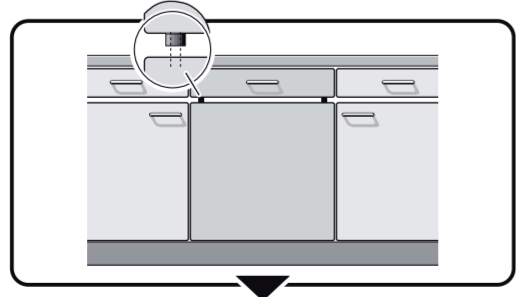
31

32

ø 38 mm
min. 280 mm
max 1,1 m

26,4 mm 20,9 mm
(G 3/4") (G 1/2")

min. 10 mm



1 → 4

5A

max. 725

444

10

11

6A

12

13

14

15

16

17

18

19

20

21

22

23

24

25

26

27

28

29

30

31

32

Torx T 20

max. 2,5 - 7,5 kg

max. 1,2 mm

22

23

24

25

26

27

28

29

30

31

32

Torx T 20

7 → 10

