

SIEMENS



Extractor hood

LD97AA670

siemens-home.bsh-group.com/welcome

Instruction manual

Register
your
product
online

Table of contents

Important safety information	3	Cleaning and maintenance	8
Environmental protection	5	What to do in the event of a fault	10
Saving energy.....	5	After-sales service	11
Environmentally-friendly disposal.....	5	Accessories for circulating-air mode	11
Operating modes	6		
Exhaust air mode.....	6		
Air recirculation	6		
Getting to know the appliance	6		
Control panel	6		
Operating the appliance	7		
Extending/retracting the appliance	7		
Setting the fan	7		
Intensive setting	7		
Fan run-on time	7		
Lighting	7		
Saturation display	7		

Additional information on products, accessories, replacement parts and services can be found at www.siemens-home.bsh-group.com and in the online shop www.siemens-home.bsh-group.com/eshops

Important safety information

Read these instructions carefully. Only then will you be able to operate your appliance safely and correctly. Retain the instruction manual and installation instructions for future use or for subsequent owners.

The appliance can only be used safely if it is correctly installed according to the safety instructions. The installer is responsible for ensuring that the appliance works perfectly at its installation location.

This appliance is intended for domestic use and the household environment only. The appliance is not intended for use outside. Do not leave the appliance unattended during operation. The manufacturer is not liable for damage which is caused by improper use or incorrect operation.

This appliance is intended for use up to a maximum height of 2000 metres above sea level.

This appliance may be used by children over the age of 8 years old and by persons with reduced physical, sensory or mental capabilities or by persons with a lack of experience or knowledge if they are supervised or are instructed by a person responsible for their safety how to use the appliance safely and have understood the associated hazards.

Children must not play with, on, or around the appliance. Children must not clean the appliance or carry out general maintenance unless they are at least 8 years old and are being supervised.

Keep children below the age of 8 years old at a safe distance from the appliance and power cable.

Check the appliance for damage after unpacking it. Do not connect the appliance if it has been damaged in transport.

This appliance is not intended for operation with an external clock timer or a remote control.

Danger of suffocation!

Packaging material is dangerous to children. Never allow children to play with packaging material.

Danger of death!

Risk of poisoning from flue gases that are drawn back in.

Always ensure adequate fresh air in the room if the appliance is being operated in exhaust air mode at the same time as room air-dependent heat-producing appliance is being operated.

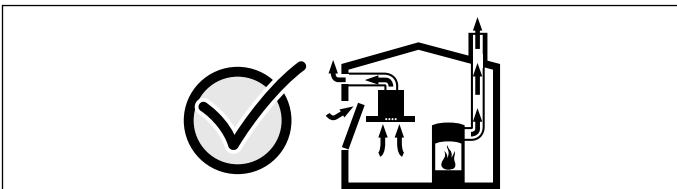


Room air-dependent heat-producing appliances (e.g. gas, oil, wood or coal-operated heaters, continuous flow heaters or water heaters) obtain combustion air from the room in which they are installed and discharge the exhaust gases into the open air through an exhaust gas system (e.g. a chimney).

In combination with an activated vapour extractor hood, room air is extracted from the kitchen and neighbouring rooms - a partial vacuum is produced if not enough fresh air is supplied. Toxic gases from the chimney or the extraction shaft are sucked back into the living space.

- Adequate incoming air must therefore always be ensured.
- An incoming/exhaust air wall box alone will not ensure compliance with the limit.

Safe operation is possible only when the partial vacuum in the place where the heat-producing appliance is installed does not exceed 4 Pa (0.04 mbar). This can be achieved when the air needed for combustion is able to enter through openings that cannot be sealed, for example in doors, windows, incoming/exhaust air wall boxes or by other technical means.



In any case, consult your responsible Master Chimney Sweep. He is able to assess the house's entire ventilation setup and will suggest the suitable ventilation measures to you.

Unrestricted operation is possible if the vapour extractor hood is operated exclusively in the circulating-air mode.

Risk of fire!

- Grease deposits in the grease filter may catch fire.

Clean the grease filter at least every 2 months.

Never operate the appliance without the grease filter.

- Grease deposits in the grease filter may catch fire. Never work with naked flames close to the appliance (e.g. flambéing). Do not install the appliance near a heat-producing appliance for solid fuel (e.g. wood or coal) unless a closed, non-removable cover is available. There must be no flying sparks.
- Hot oil and fat can ignite very quickly. Never leave hot fat or oil unattended. Never use water to put out burning oil or fat. Switch off the hotplate. Extinguish flames carefully using a lid, fire blanket or something similar.
- When gas burners are in operation without any cookware placed on them, they can build up a lot of heat. A ventilation appliance installed above the cooker may become damaged or catch fire. Only operate the gas burners with cookware on them.
- Operating several gas burners at the same time gives rise to a great deal of heat. The ventilation appliance may become damaged or catch fire. The ventilation appliance must only be combined with gas burners that do not exceed the maximum total output of 12.4 kW.

Risk of burns!

The accessible parts become very hot when in operation. Never touch hot parts. Keep children at a safe distance.

Risk of injury!

- Components inside the appliance may have sharp edges. Wear protective gloves.
- Items placed on the appliance may fall down. Do not place any objects on the appliance.
- The light emitted by LED lights is very dazzling, and can damage the eyes (risk group 1). Do not look directly into the switched on LED lights for longer than 100 seconds.
- Risk of jamming when retracting and extending the appliance. Never reach into the moving area of the appliance while it is being retracted or extended. Keep children at a safe distance.
- Cookware set down within the movement area of the appliance can fall over. Hot liquids that pour out can cause injury. Do not set down any cookware within the movement area of the appliance.
- Cookware and cooktops become very hot. Never reach across the hot cooktop or take hold of hot cookware.

Risk of electric shock!

- A defective appliance may cause electric shock. Never switch on a defective appliance. Unplug the appliance from the mains or switch off the circuit breaker in the fuse box. Contact the after-sales service.
- Incorrect repairs are dangerous. Repairs may only be carried out and damaged power cables replaced by one of our trained after-sales technicians. If the appliance is defective, unplug the appliance from the mains or switch off the circuit breaker in the fuse box. Contact the after-sales service.
- Do not use any high-pressure cleaners or steam cleaners, which can result in an electric shock.

Causes of damage

Caution!

Risk of damage due to corrosion. Always switch on the appliance while cooking to avoid condensation. Condensate can produce corrosion damage.

Risk of damage due to ingress of humidity into the electronic circuitry. Never clean operator controls with a wet cloth.

Surface damage due to incorrect cleaning. Clean stainless steel surfaces in the direction of the grain only. Do not use any stainless steel cleaners for operator controls.

Surface damage due to strong or abrasive cleaning agents. Never use strong and abrasive cleaning agents.

Items placed on the appliance may damage the appliance or adjacent cooktops when the appliance is extended or retracted. Do not place any objects on the moving parts of the appliance.

Environmental protection

Your new appliance is particularly energy-efficient. Here you can find tips on how to save even more energy when using the appliance, and how to dispose of your appliance properly.

Saving energy

- During cooking, ensure that there is a sufficient supply of air so that the extractor hood can work efficiently and with a low level of operating noise.
- Adjust the fan speed to the intensity of the cooking fumes. Only use intensive mode where this is required. A lower fan speed means that less energy is consumed.
- If there are intensive cooking fumes, select a higher fan speed in good time. If cooking fumes have already spread in the kitchen, the extractor hood must be operated for longer.
- Switch off the extractor hood if you no longer require it.
- Switch off the lighting if you no longer require it.
- Clean and, if required, replace the filter at regular intervals in order to increase the effectiveness of the ventilation system and to prevent the risk of fire.

Environmentally-friendly disposal

Dispose of packaging in an environmentally-friendly manner.



This appliance is labelled in accordance with European Directive 2012/19/EU concerning used electrical and electronic appliances (waste electrical and electronic equipment - WEEE). The guideline determines the framework for the return and recycling of used appliances as applicable throughout the EU.

Operating modes

This appliance can be used in exhaust-air mode or circulating-air mode.

Exhaust air mode



The air which is drawn in is cleaned by the grease filters and conveyed to the exterior by a pipe system.

Note: The exhaust air must not be conveyed into a functioning smoke or exhaust gas flue or into a shaft which is used to ventilate installation rooms which contain heating appliances.

- Before conveying the exhaust air into a non-functioning smoke or exhaust gas flue, obtain the consent of the heating engineer responsible.
- If the exhaust air is conveyed through the outer wall, a telescopic wall box should be used.

Air recirculation

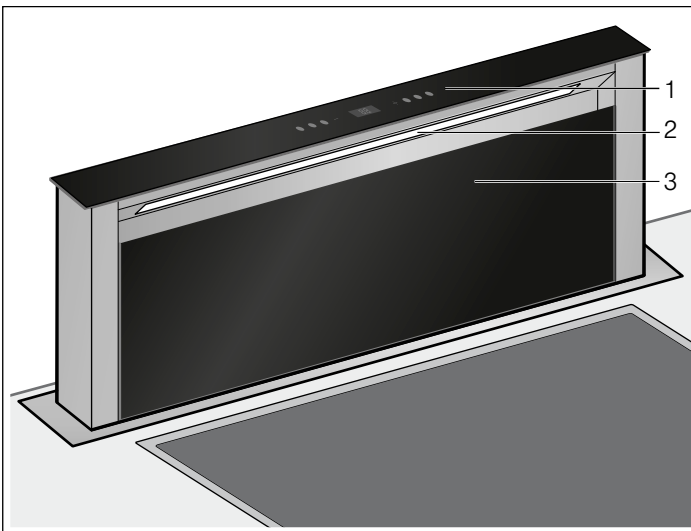


The air which is drawn in is cleaned by the grease filters and an activated carbon filter, and is conveyed back into the kitchen.

Note: To bind odours in air recirculation mode, you must install an activated carbon filter. The different options for operating the appliance in air recirculation mode can be found in the brochure. Alternatively, ask your dealer. The required accessories are available from specialist retailers, from customer service or from the Online Shop.

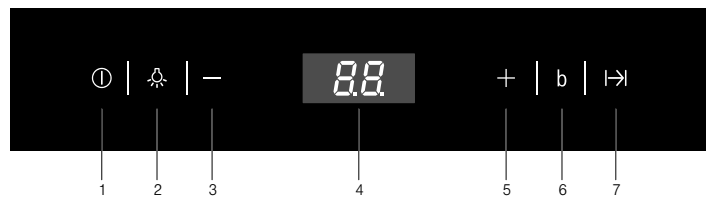
Getting to know the appliance

Here, you can get to know your appliance and receive information about the accessories.



1	Control panel
2	Light
3	Filter cover

Control panel



Explanation

1	Retract/extend the appliance, switch the fan on and off
2	Switch on lighting
3	Turn the fan down
4	Display panel
5	Switch fan setting up
6	Intensive setting
7	Fan run-on time

Operating the appliance

This appliance only works when it is completely extended.

Note: Switch on the extractor hood when you start cooking and switch it off again several minutes after you have finished cooking. This is the most effective way of removing the kitchen fumes.

Extending/retracting the appliance

Risk of injury!


Risk of jamming when retracting and extending the appliance. Never reach into the moving area of the appliance while it is being retracted or extended. Keep children at a safe distance.

Risk of injury!

Cookware set down within the movement area of the appliance can fall over. Hot liquids that pour out can cause injury. Do not set down any cookware within the movement area of the appliance.


Note: If the appliance has been temporarily disconnected from the power supply, it will retract fully.

Extending the appliance

1. Remove any objects from the area of movement of the appliance.
2. Press the  button.
The appliance extends fully. The fan starts at setting 2.

Retracting the appliance

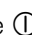
Note: The filter cover must be closed completely.

1. Remove any objects from the area of movement of the appliance.
2. Press and hold the  button for two seconds.
The appliance retracts fully. The light and fan are automatically switched off.


Setting the fan

Note: Always adjust the fan strength to meet current conditions. If there is a large build-up of steam or fumes, select a high fan setting.

Switching on the appliance

1. Press the  button.
The fan starts at setting 2.
2. Press the "+" or "-" buttons to set another fan setting.

Switching off the appliance

Press the  button.

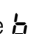
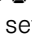
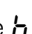
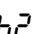
Intensive setting

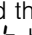
You can use the intensive setting if there is a large build-up of odours and fumes/vapours.

Two different intensive settings are available:

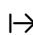
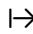
 – duration: 5 minutes

 – duration: 7 minutes

- Press the  button.
Intensive setting  is activated.
- Press the  button again to activate intensive setting .


Once the preset time has elapsed, the electronics automatically switch the fan back to the setting at which it was operating previously. If you wish to end the intensive setting before this time has elapsed, press the  button.

Fan run-on time



1. Press the  button.
The fan continues to operate for a further 15 minutes at the previous setting, and then switches off automatically after this time. The remaining run-on time is displayed in minutes in the display panel. If the lighting is switched on, this is also switched off after the run-on time.
2. Press the  button again.
The fan run-on ends before the end of the remaining run-on time.

Lighting

The lighting can be switched on and off independently of the ventilation.

Press the  button.

Setting the brightness

1. Press and hold the  button for two seconds.
The brightness is reduced.
2. Press the  button.
The maximum brightness is restored.

Saturation display

When the metal grease filter or activated charcoal filter is saturated, the corresponding symbol flashes:

■ **Metal grease filter:** 

■ **Activated charcoal filter:** 

When this happens, do not delay cleaning the metal grease filter or replacing the activated charcoal filter any further.

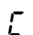
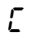
For instructions on how to clean the metal grease filter, please refer to the section "*Cleaning and maintenance*".

Restoring the saturation displays

1. Switch off the motor.
2. Press and hold the "-" button for two seconds.

Switching over the display for circulating-air mode

For circulating-air mode, the electronic control display must be switched over accordingly:

1. Check that the extractor hood is connected and switched off.
2. Press and hold the "+" button for two seconds.
 flashes twice, i.e. the electronic control is switched over to circulating-air mode.
3. Press the "+" button.
 flashes once, i.e. the electronic control is switched back to exhaust-air mode.

Cleaning and maintenance

Risk of burns!

The appliance becomes hot during operation. Allow the appliance to cool down before cleaning.

Risk of electric shock!

Penetrating moisture may result in an electric shock. Clean the appliance using a damp cloth only. Before cleaning, pull out the mains plug or switch off the circuit breaker in the fuse box.

Risk of electric shock!

Do not use any high-pressure cleaners or steam cleaners, which can result in an electric shock.

Risk of injury!

Components inside the appliance may have sharp edges. Wear protective gloves.

Cleaning agents

Observe the information in the table to ensure that the different surfaces are not damaged by using the wrong type of cleaning agent. Do not use

- harsh or abrasive cleaning agents,
- cleaning agents with a high concentration of alcohol,
- hard scouring pads or sponges,
- high-pressure cleaners or steam cleaners.

Wash new sponge cloths thoroughly before use.

Follow all instructions and warnings included with the cleaning agents.

Area	Cleaning agents
Stainless steel	Hot soapy water: Clean with a dish cloth and dry with a soft cloth. Clean stainless steel surfaces in the direction of the grain only. Special stainless steel cleaning products are available from our after-sales service or from specialist retailers. Apply a very thin layer of the cleaning product with a soft cloth.
Painted surfaces	Hot soapy water: Clean using a damp dish cloth and dry with a soft cloth/towel. Do not use any stainless steel cleaners.
Aluminium and plastic	Glass cleaner: Clean with a soft cloth.
Glass	Glass cleaner: Clean with a soft cloth. Do not use a glass scraper.
Operating controls	Hot soapy water: Clean using a damp dish cloth and dry with a soft cloth. Risk of damage to the electronics from penetrating moisture. Never clean operator controls with a wet cloth. Do not use any stainless steel cleaners.

Cleaning the metal mesh grease filters

These instructions apply to several appliance variants. It is possible that individual features are described which do not apply to your appliance.

Risk of fire!

Grease deposits in the grease filter may catch fire.

Clean the grease filter at least every 2 months.

Never operate the appliance without the grease filter.

Notes

- Do not use any aggressive, acidic or alkaline cleaning agents.
- When cleaning the metal mesh grease filters, also clean the holder for the metal mesh grease filters in the appliance using a damp cloth.
- The metal mesh grease filters can be cleaned in the dishwasher or by hand.

By hand:

Note: You can use a special grease solvent for stubborn dirt. It can be ordered via the Online Shop.

- Soak the metal mesh grease filters in a hot soapy solution.
- Clean the filters with a brush and then rinse them thoroughly.
- Leave the metal mesh grease filters to drain.

In the dishwasher:

Note: If the metal mesh grease filters are cleaned in the dishwasher, slight discolouration may occur. This has no effect on the function of the metal mesh grease filters.

- Do not clean heavily soiled metal mesh grease filters together with utensils.
- Place the metal mesh grease filters loosely in the dishwasher. The metal mesh grease filters must not be wedged in.

Removing and installing the filter

In order to guarantee efficient filtration of odours and grease, the filter must be serviced regularly.

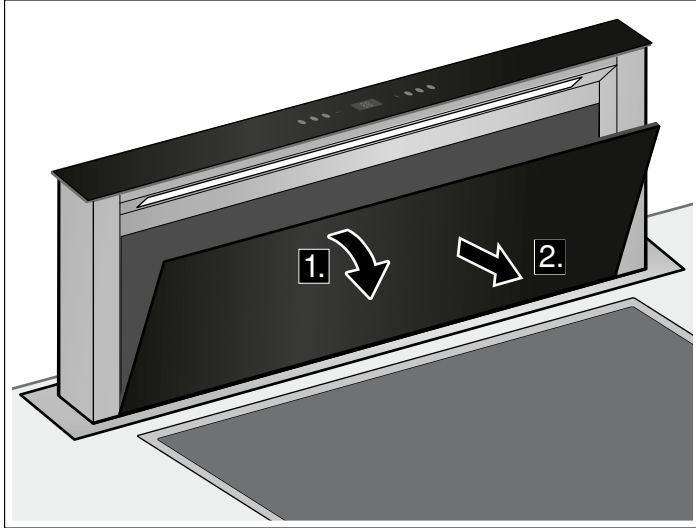
Metal grease filter

The metal grease filter must be cleaned every 100 operating hours, and at least after two months.

Activated charcoal filter (only in circulating-air mode)

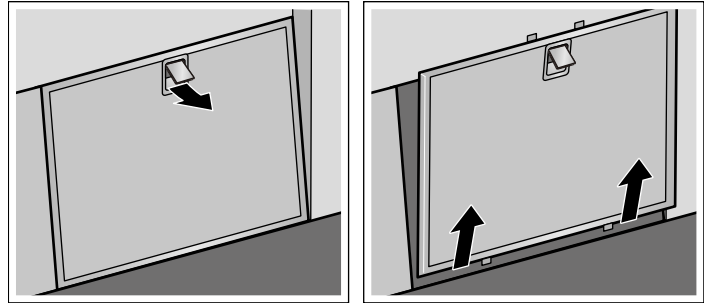
The activated charcoal filter must be replaced every 200 operating hours.

Opening the filter cover



1. Fold the filter cover forwards.
2. Lift the filter cover forwards.

Removing metal grease filter

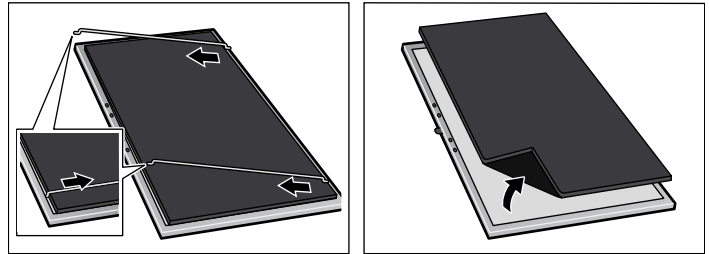


1. Open the metal grease filter lock and remove the filter from the holder.

Note: Grease can collect in the bottom of the filter holder. Hold the filter holder at an angle to prevent grease from dripping out.

2. Clean the metal grease filter and filter cover.
3. After removing the filters, clean the inside of the appliance.

Changing the activated charcoal filter (only in circulating-air mode)



1. Hold the edge of the metal clip firmly and pull towards the middle of the filter.
2. Take the metal clip out of the holder.
3. Disconnect the activated charcoal filter from the metal grease filter.
4. Secure the activated charcoal filter back to the metal grease filter with the metal clip.

Installing the metal mesh grease filter

1. Fit the metal grease filter.
2. Fit the filter cover.

What to do in the event of a fault

Malfunctions often have simple explanations. Please read the following notes before calling the after-sales service.

Risk of electric shock!

Incorrect repairs are dangerous. Repairs may only be carried out and damaged power cables replaced by one of our trained after-sales technicians. If the appliance is defective, unplug the appliance from the mains or switch off the circuit breaker in the fuse box. Contact the after-sales service.

LED lights

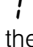

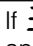
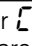
Defective LED lights must only be replaced by the manufacturer, their customer service department or a licensed technician (electrician).

What to do if water gets in

If water gets in to the appliance during cooking or cleaning, proceed as follows:

1. Switch off the appliance.
2. Open the floor cupboard and mop up leaking water.
3. Leave the appliance switched off for 24 hours.
After this time, the appliance can be used again without restrictions.

Malfunction table

Problem	Possible cause	Solution
 is shown on the display.	The safety switch-off function is deactivated. With the safety switch-off function deactivated, the appliance extends and retracts and will be ready to use again after around 30 seconds.	Note: Disconnect the appliance from the power supply. The appliance needs to be repaired. Call the after-sales service.
	 Risk of injury! Risk of crushing when the appliance is extending and retracting. Stop using the appliance. Keep children away from the appliance.	
The appliance does not work	The plug is not plugged in.	Connect the appliance to the electricity supply
	Power cut	Check whether other kitchen appliances are working
	Faulty fuse	Check in the fuse box to make sure that the fuse for the appliance is OK
Appliance does not switch on.	Filter cover not closed.	Close the filter cover fully.
The appliance does not extend or retract.	The circuit breaker in the electrical box is defective.	Call the after-sales service.
The 7 segment display is not working.	The operating module is defective.	Call the after-sales service.
The lighting does not work.	The LED lights are defective.	Call the after-sales service.
If  or  appears on the display	The grease or activated charcoal filter is saturated.	Clean the filter – see section "Cleaning and maintenance".

After-sales service

Our after-sales service is there for you if your appliance needs to be repaired. We will always find the right solution in order to avoid unnecessary visits from a service technician.

When calling us, please give the product number (E no.) and the production number (FD no.) so that we can provide you with the correct advice. The rating plate with these numbers can be found inside the appliance (remove the metal mesh grease filter to gain access).

You can make a note of the numbers of your appliance and the telephone number of the after-sales service in the space below to save time should it be required.

E no.	FD no.
--------------	---------------

After-sales service

Please be aware that a visit by an after-sales engineer will be charged if a problem turns out to be the result of operator error, even during the warranty period.

Please find the contact data of all countries in the enclosed customer service list.

To book an engineer visit and product advice

GB 0344 892 8999
Calls charged at local or mobile rate.

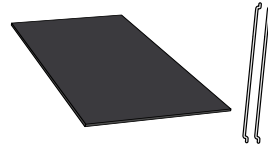
IE 01450 2655
0.03 € per minute at peak.
Off peak 0.0088 € per minute.

Rely on the professionalism of the manufacturer. You can therefore be sure that the repair is carried out by trained service technicians who carry original spare parts for your appliances.

Accessories for circulating-air mode

(not included in the delivery)

LZ53750



BSH Hausgeräte GmbH
Carl-Wery-Straße 34, 81739 München, GERMANY

siemens-home.bsh-group.com

Manufactured by BSH Hausgeräte GmbH under Trademark License of Siemens AG



9001078006 951117