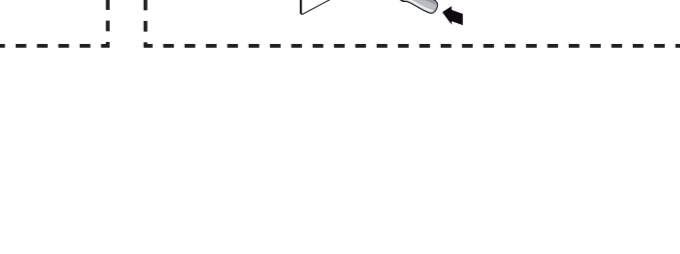
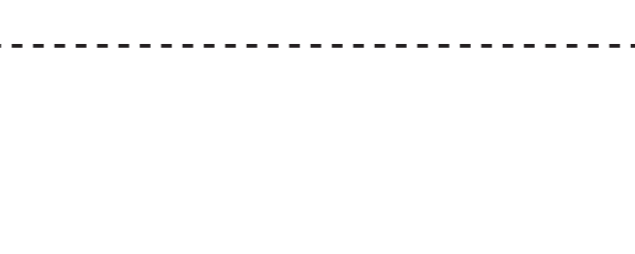
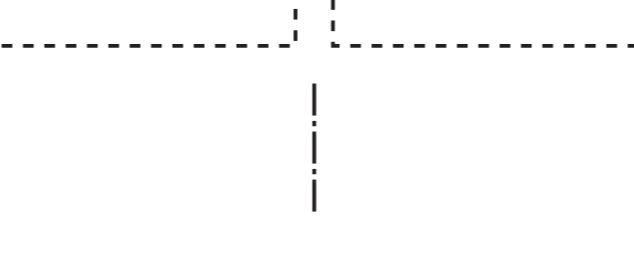
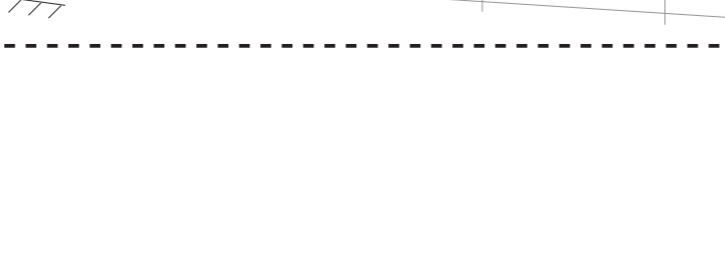
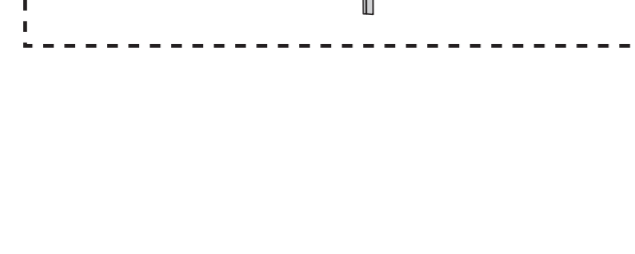
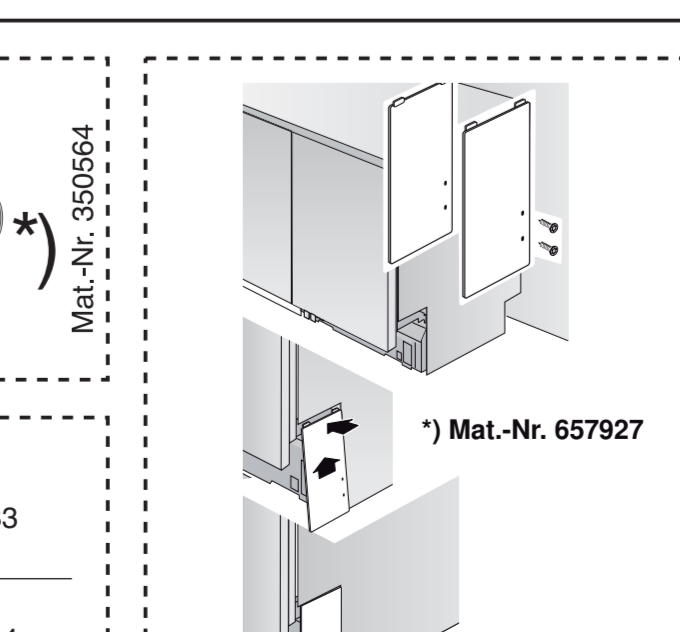
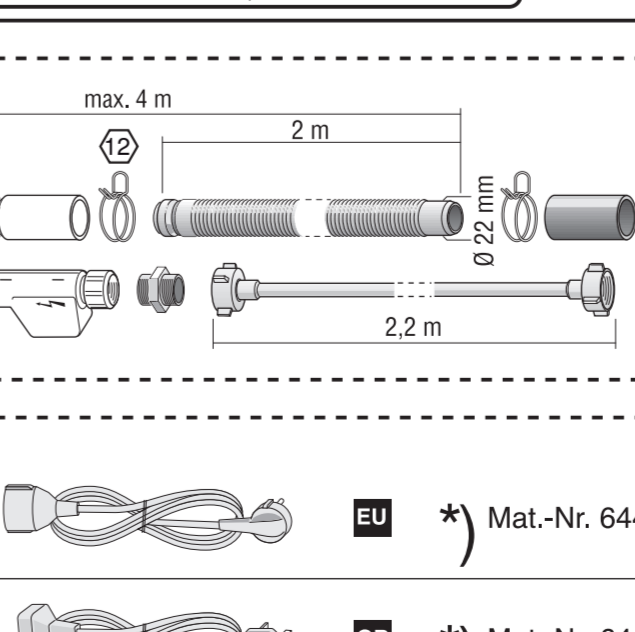
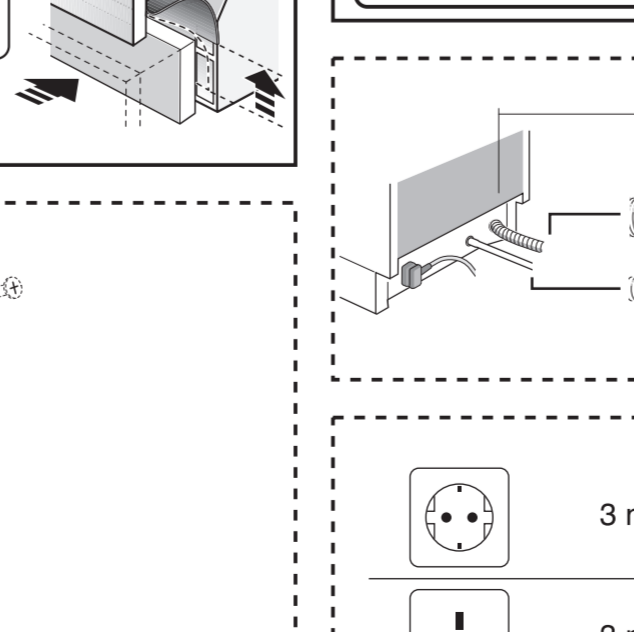
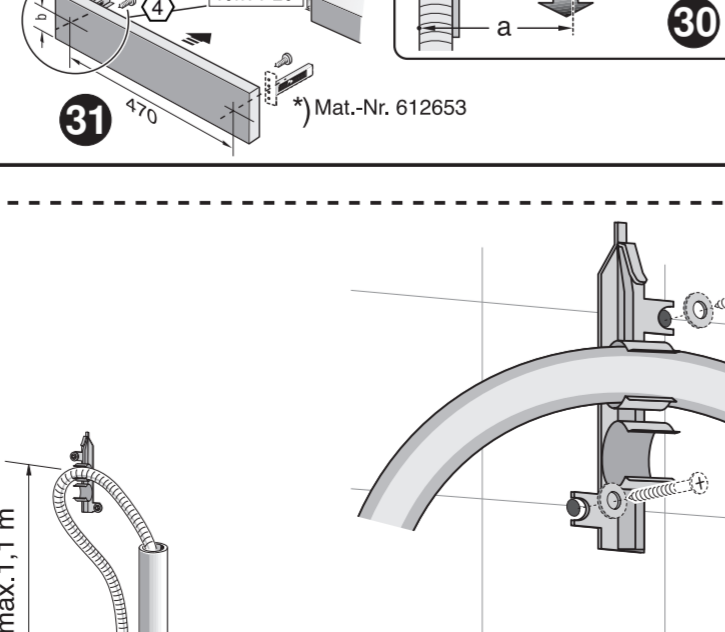
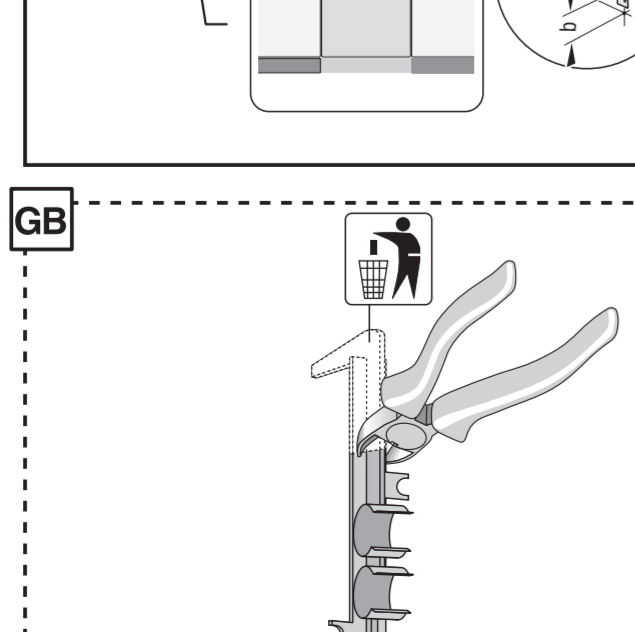
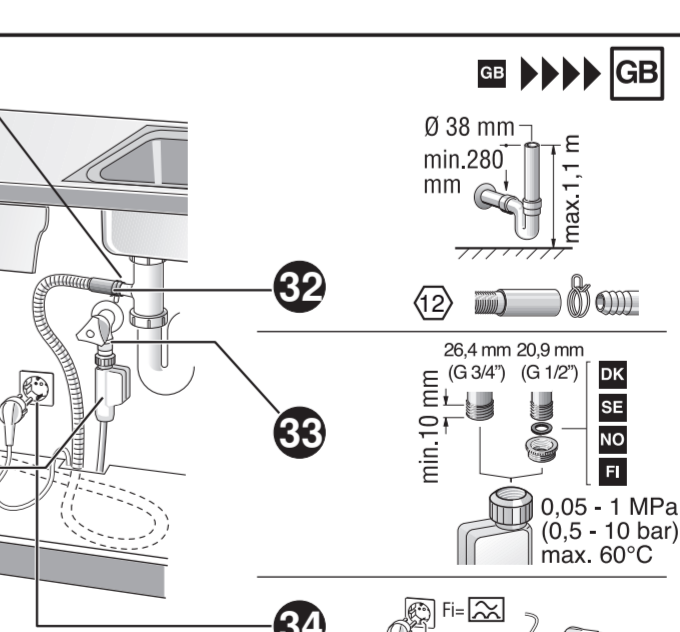
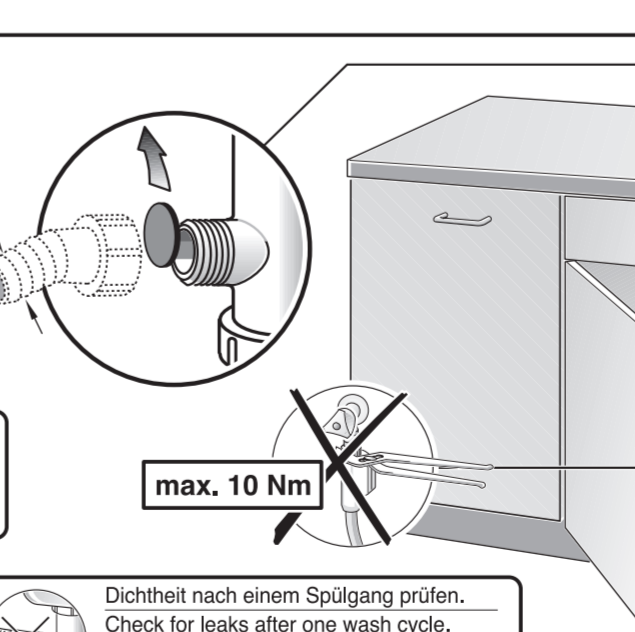
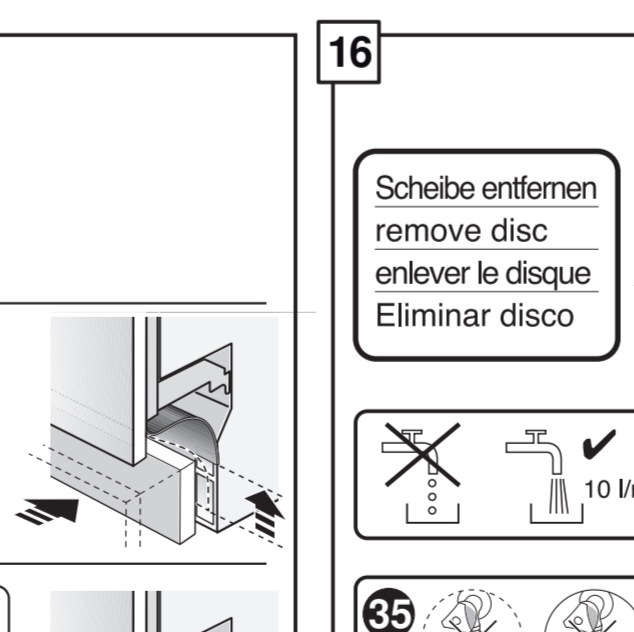
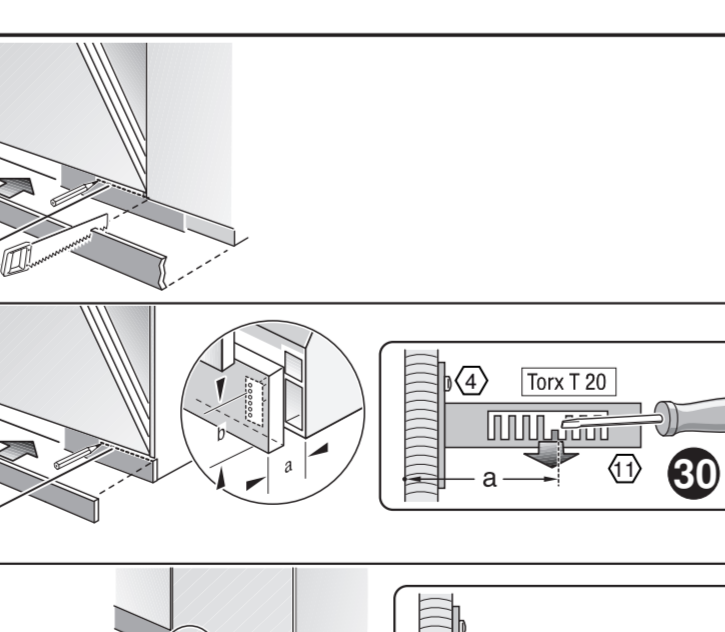
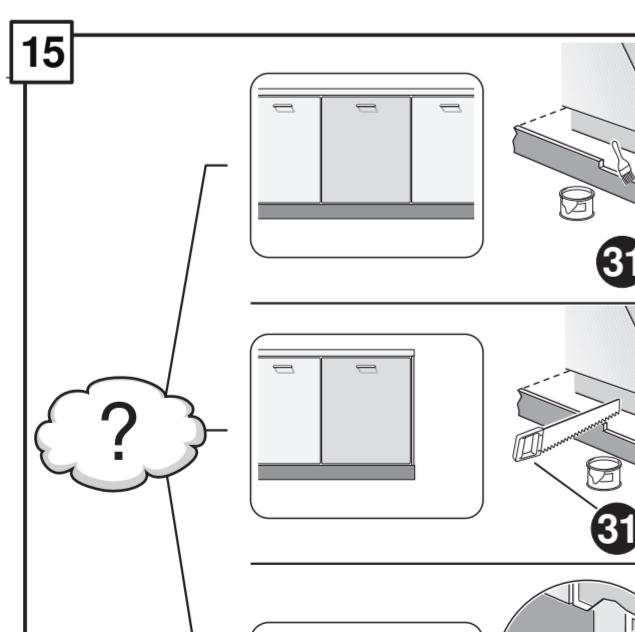
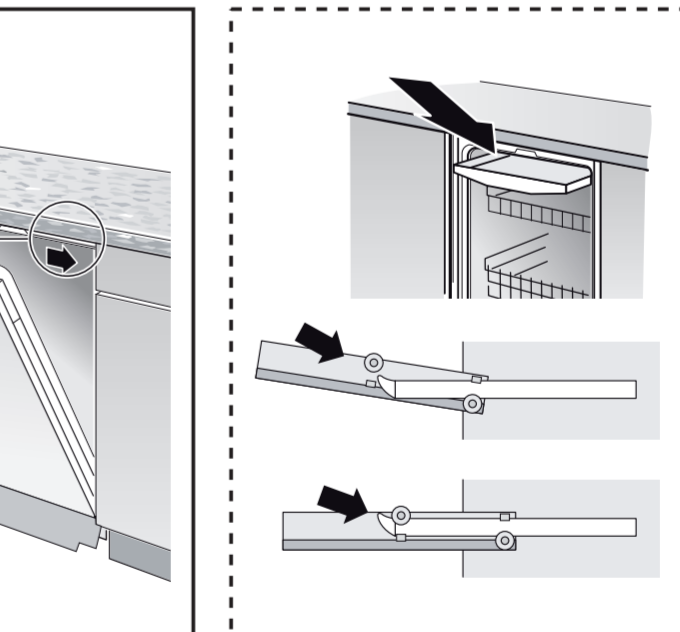
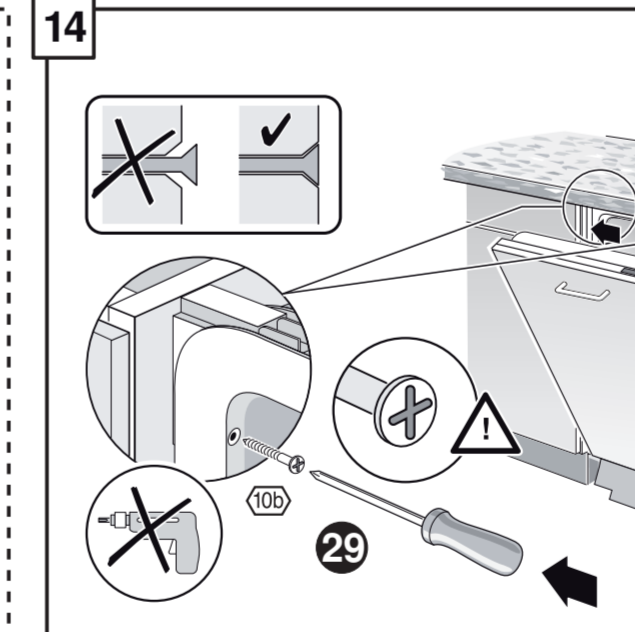
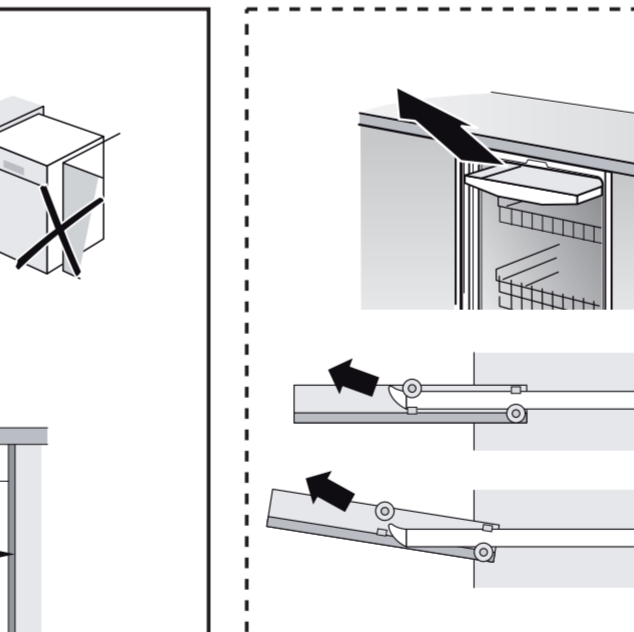
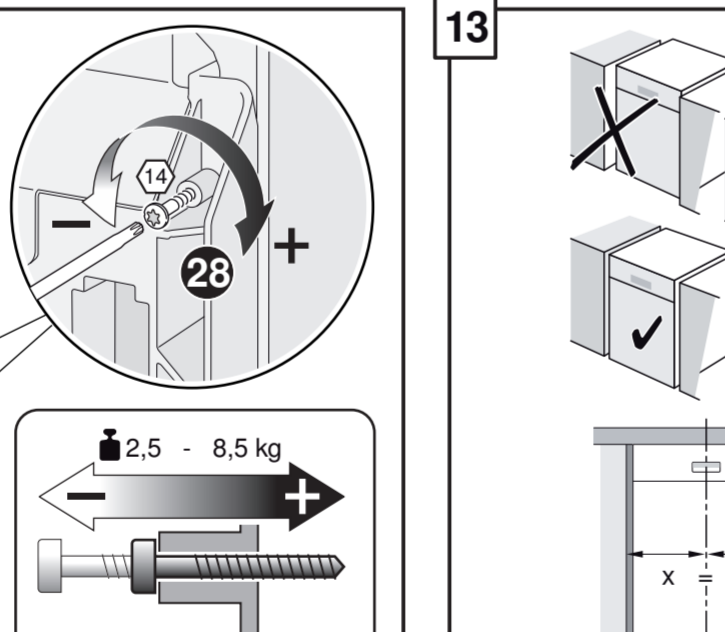
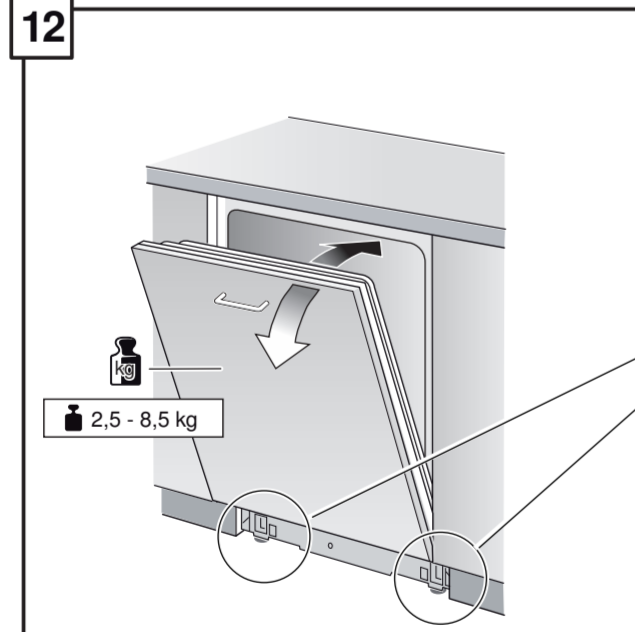
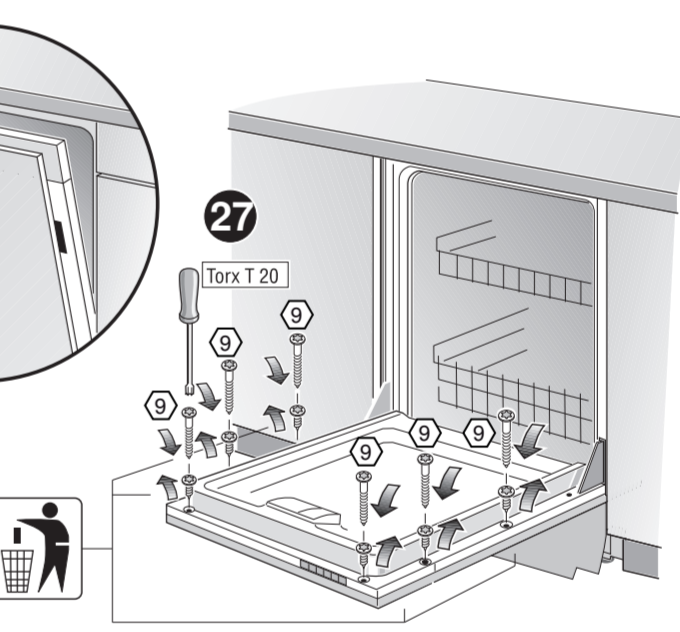
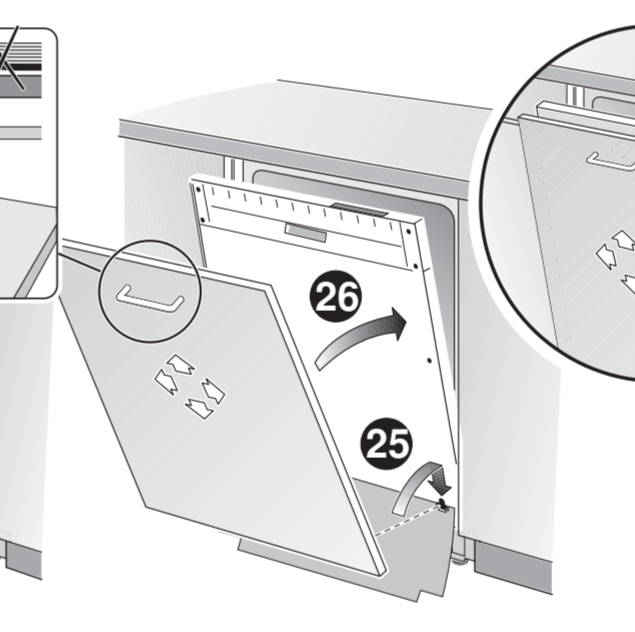
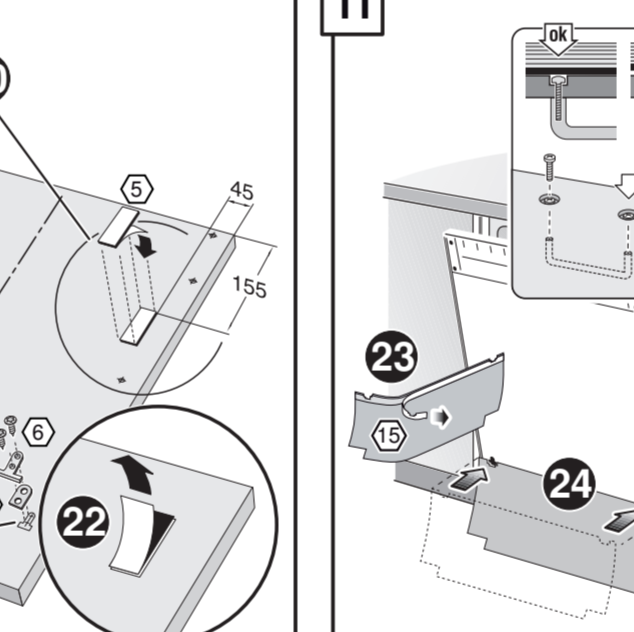
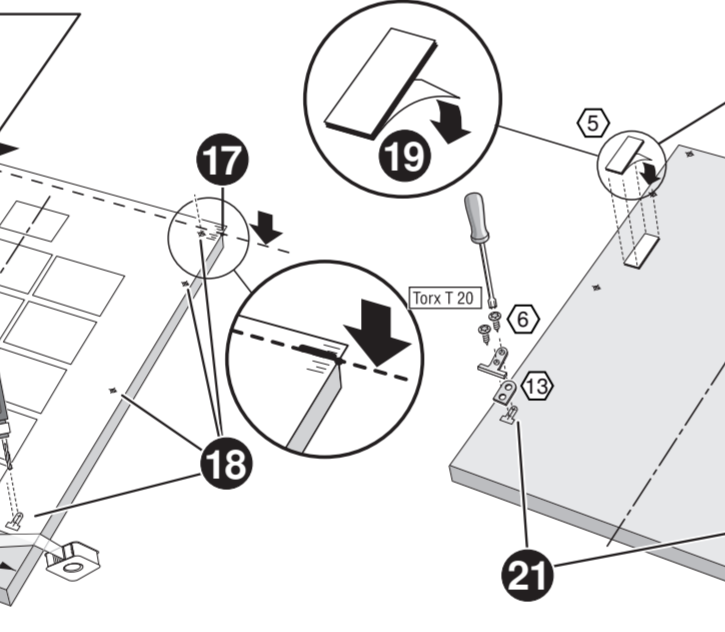
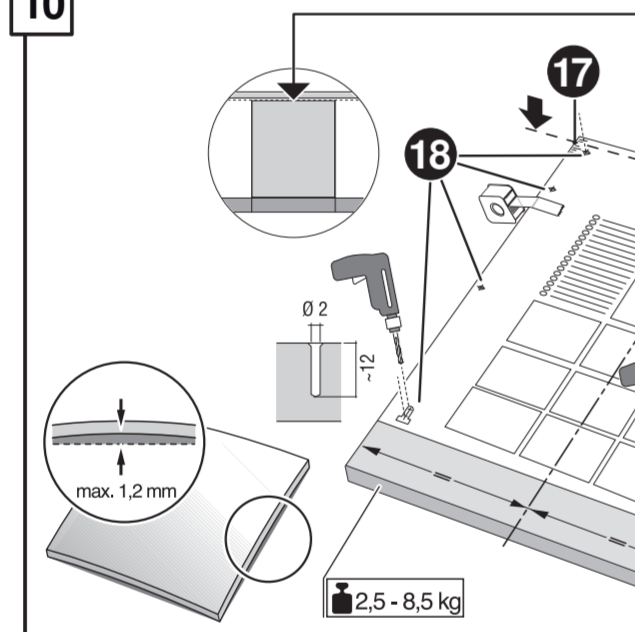
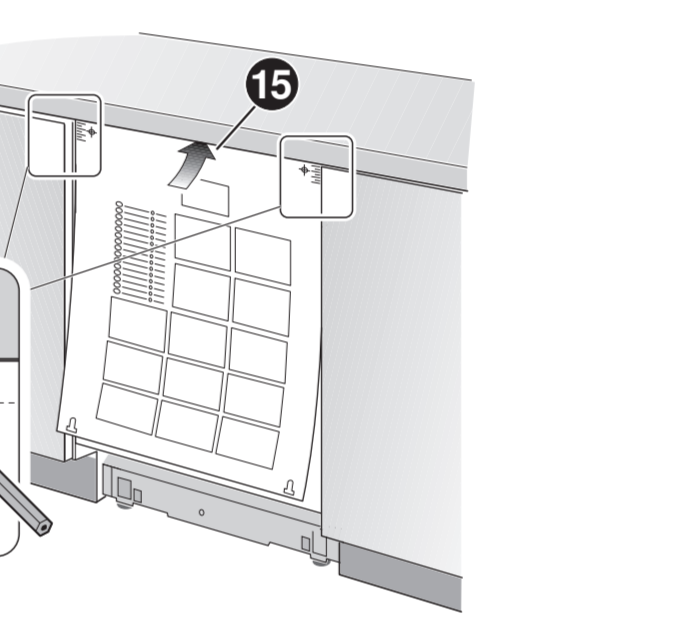
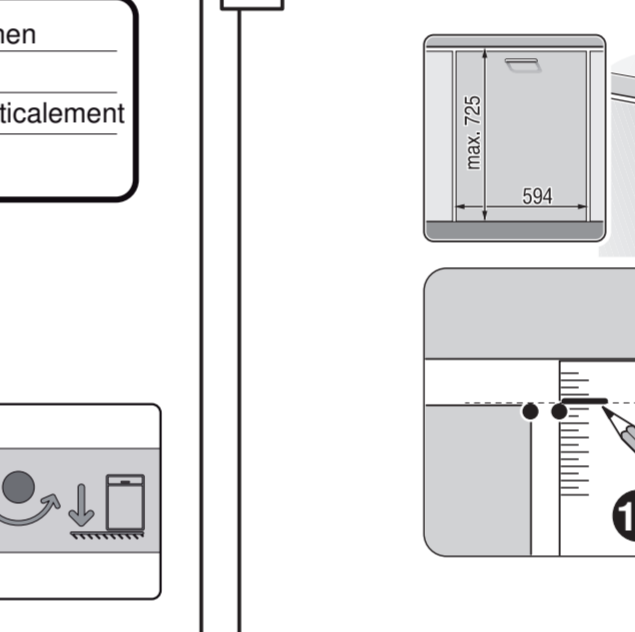
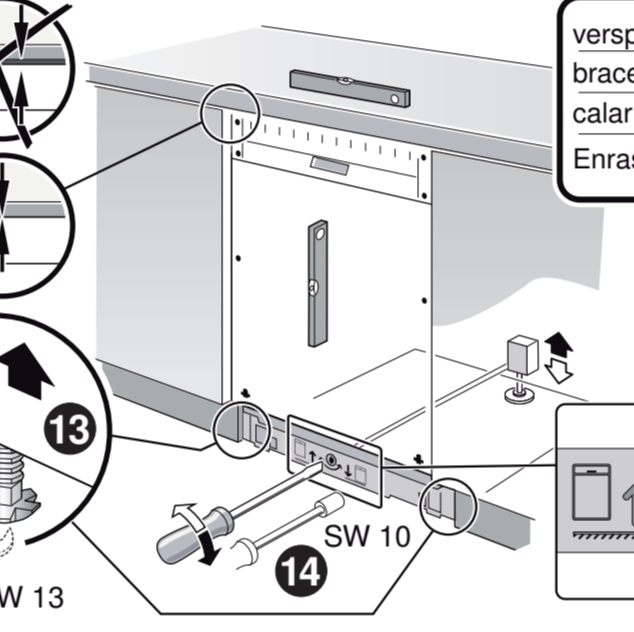
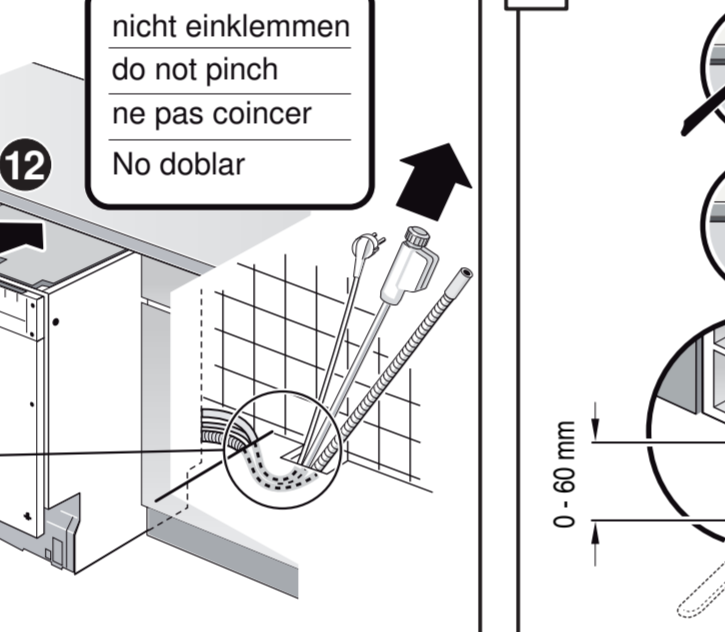
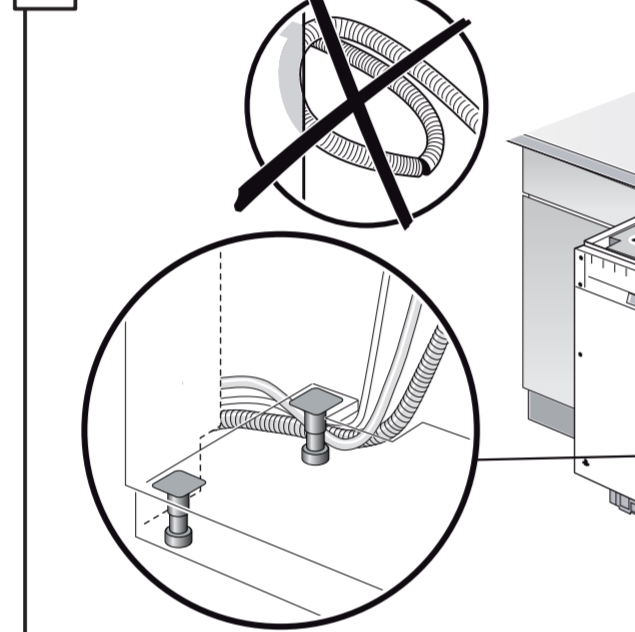
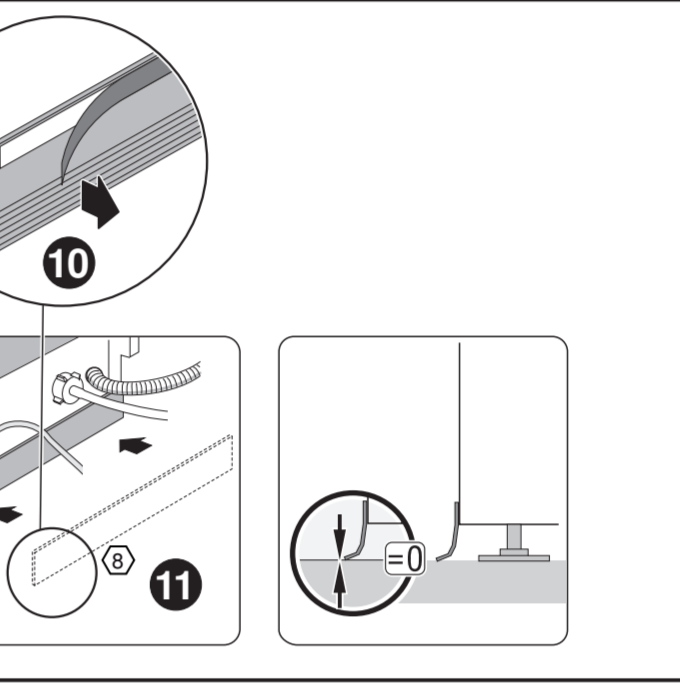
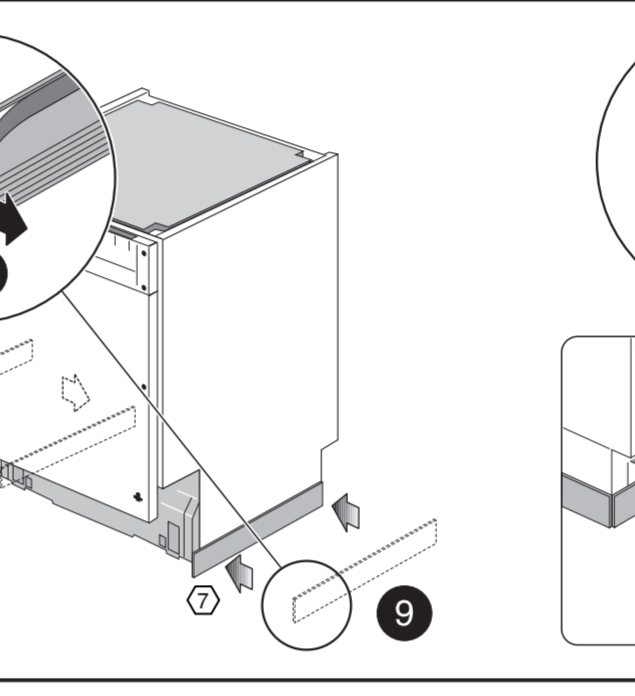
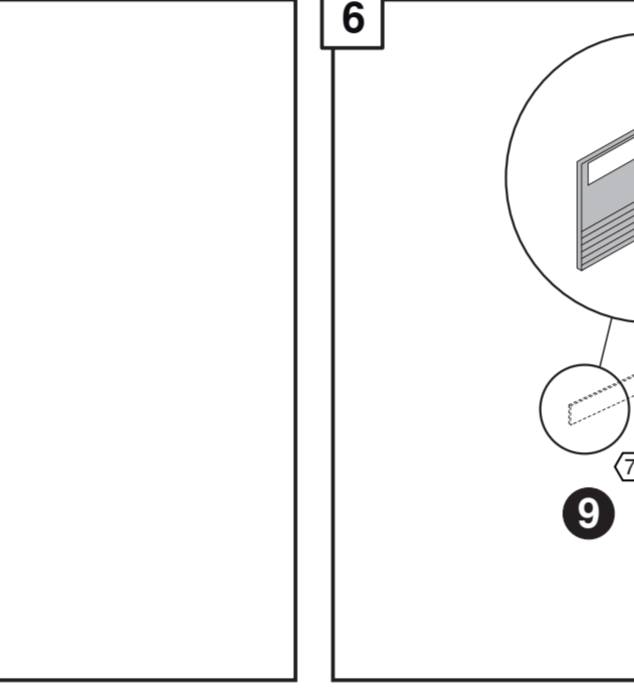
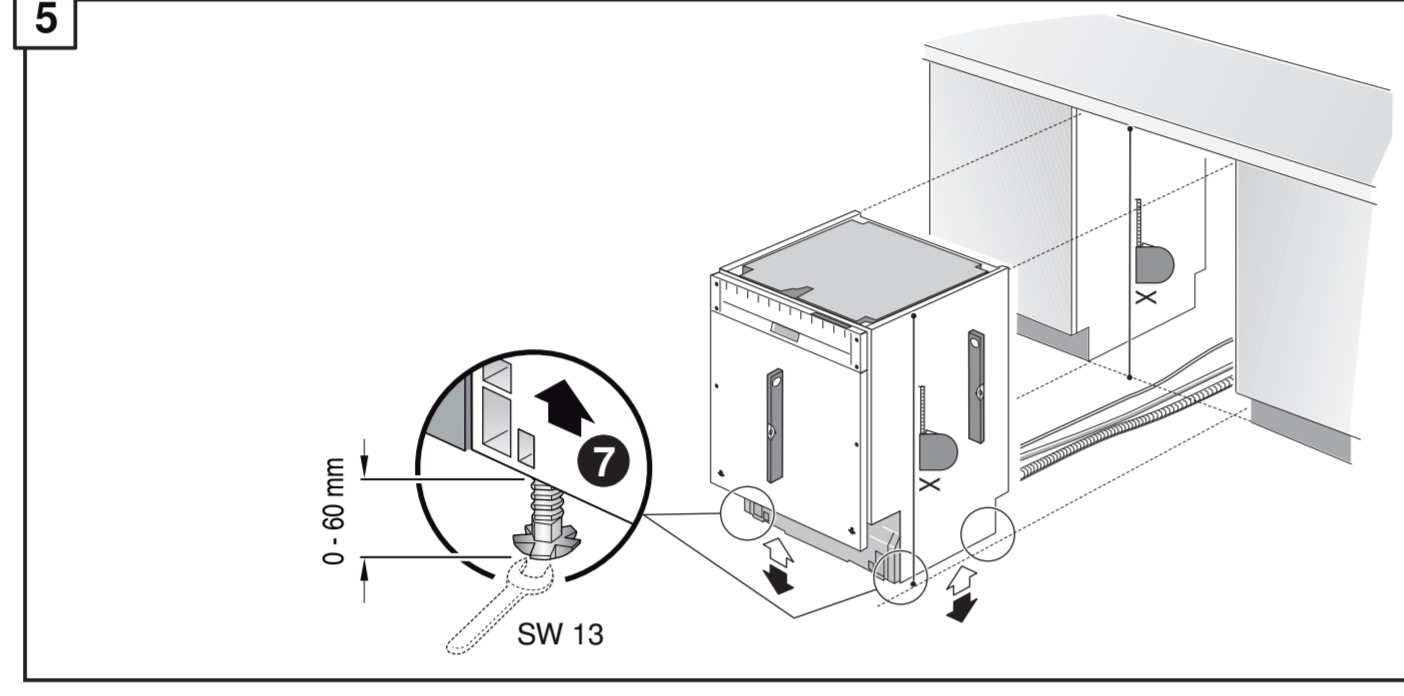
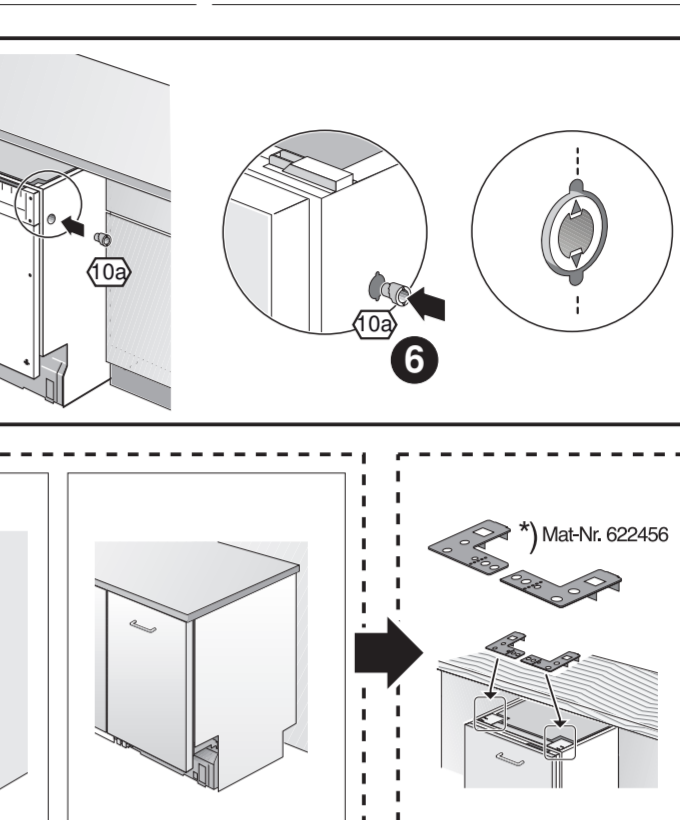
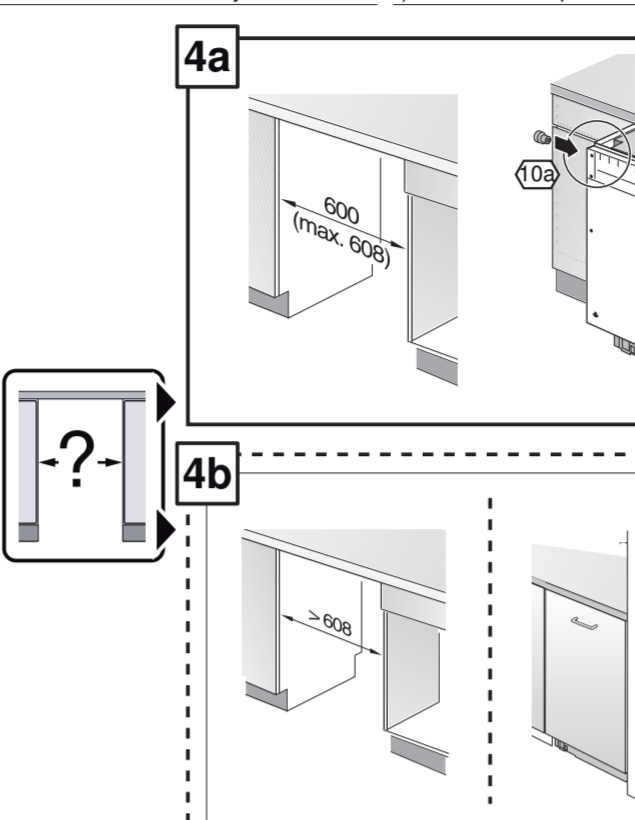
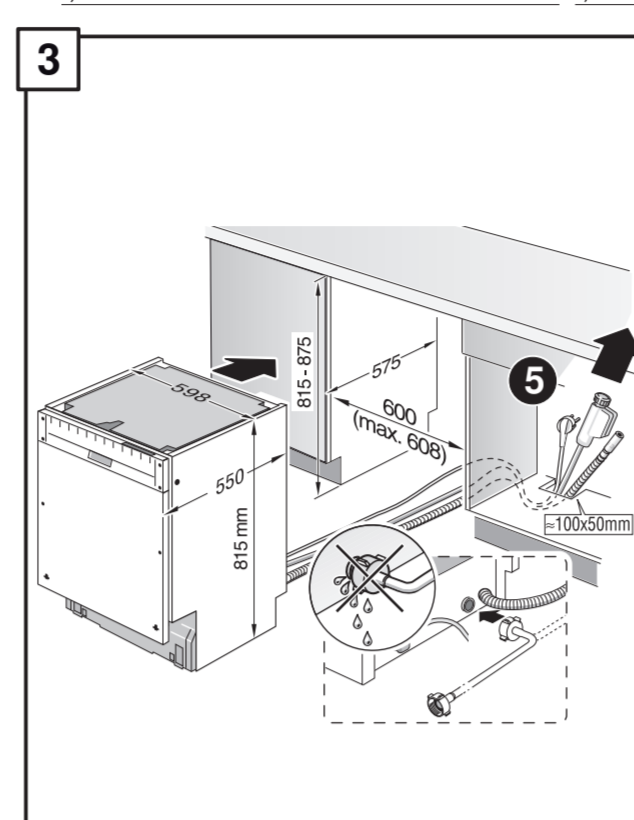
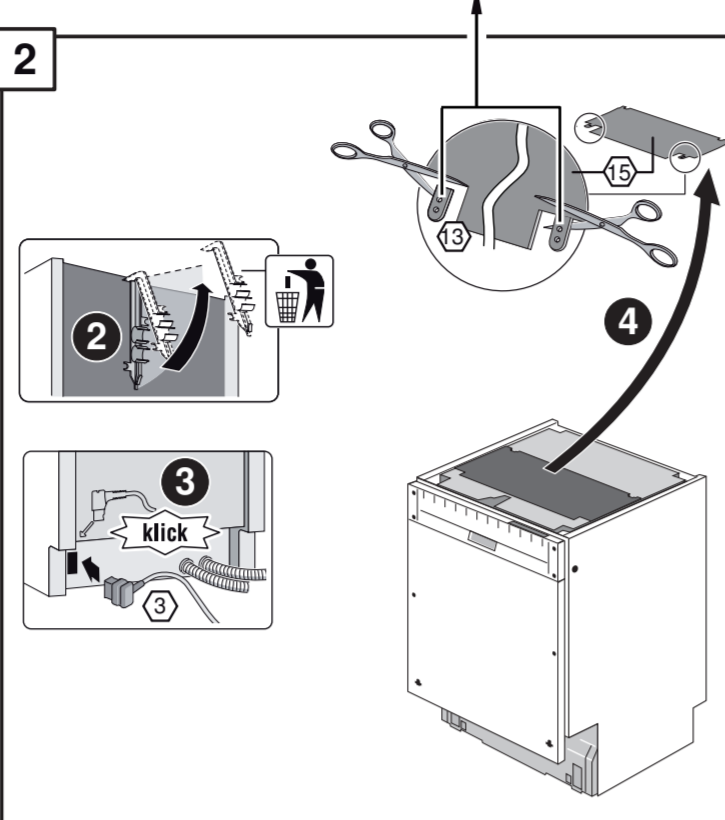
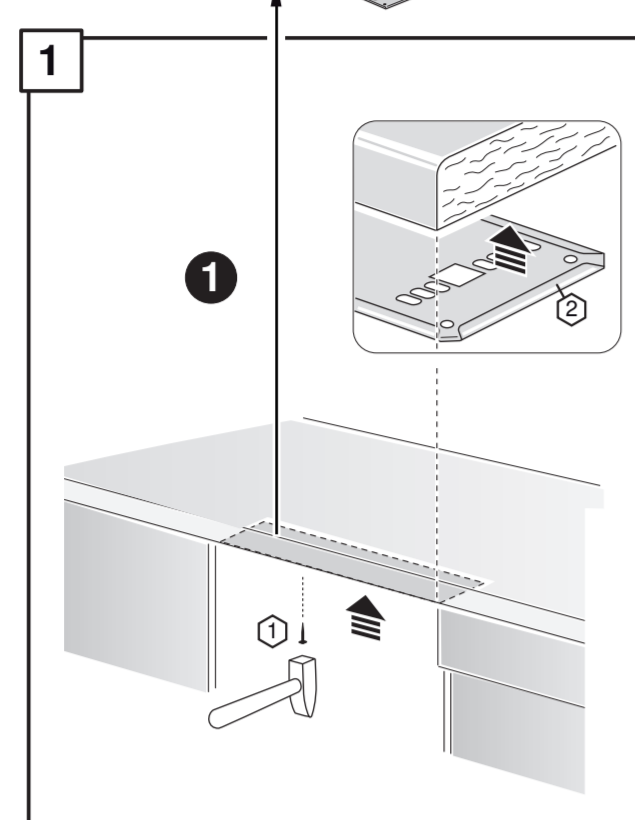
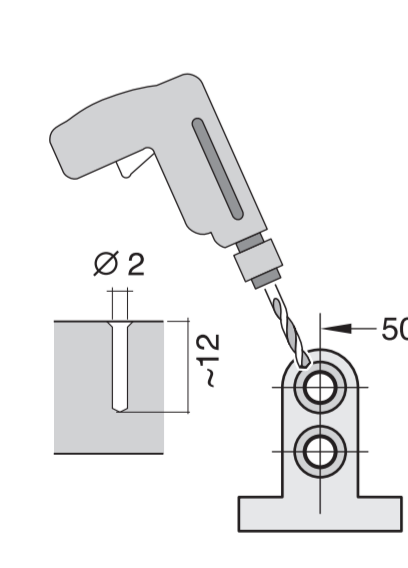
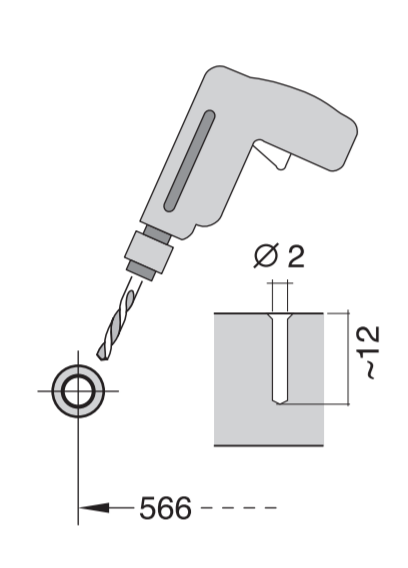
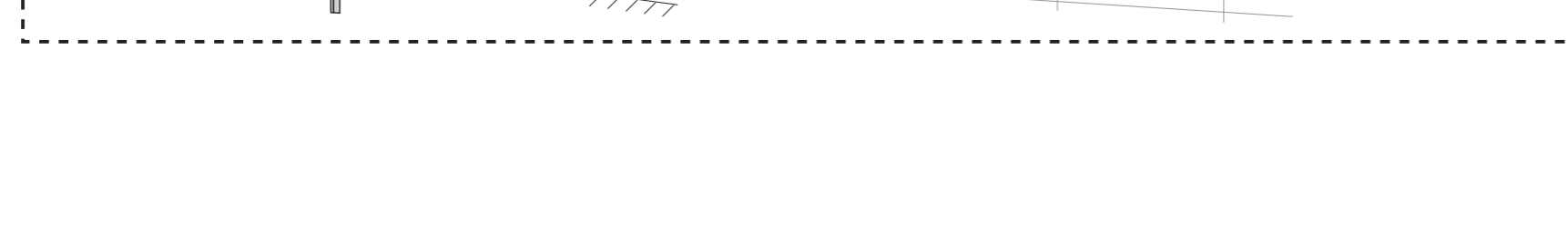
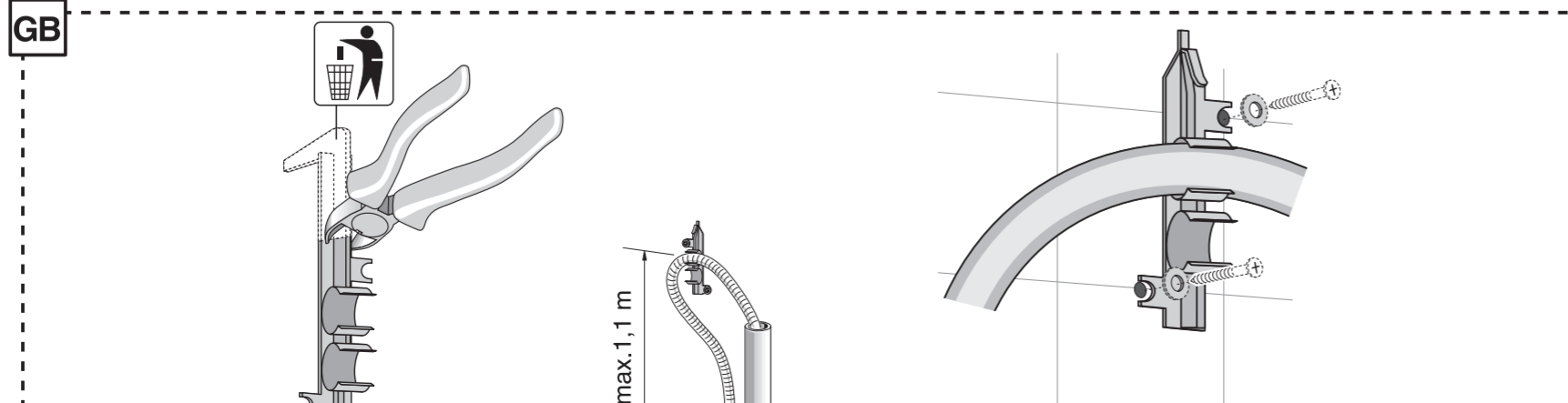
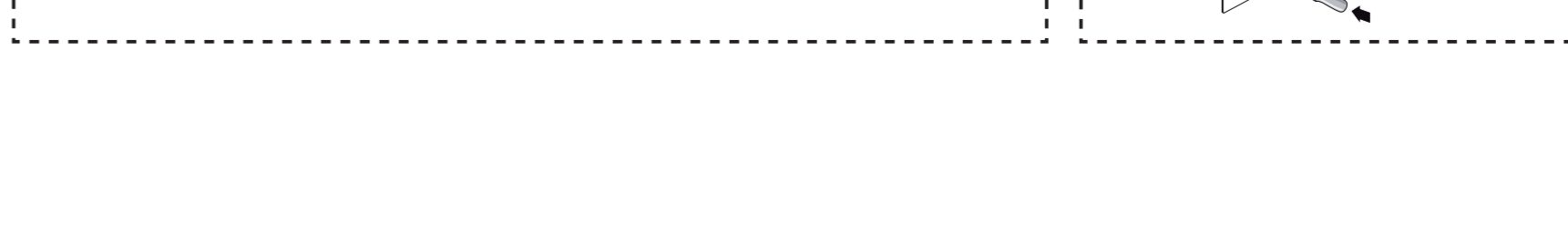
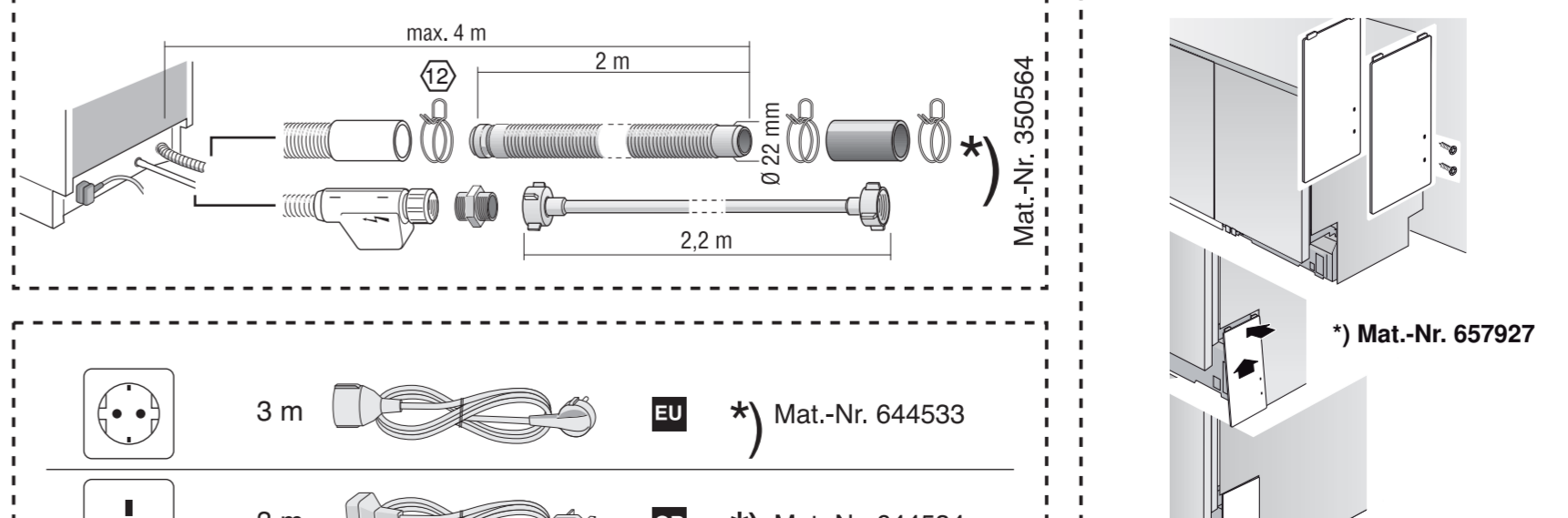
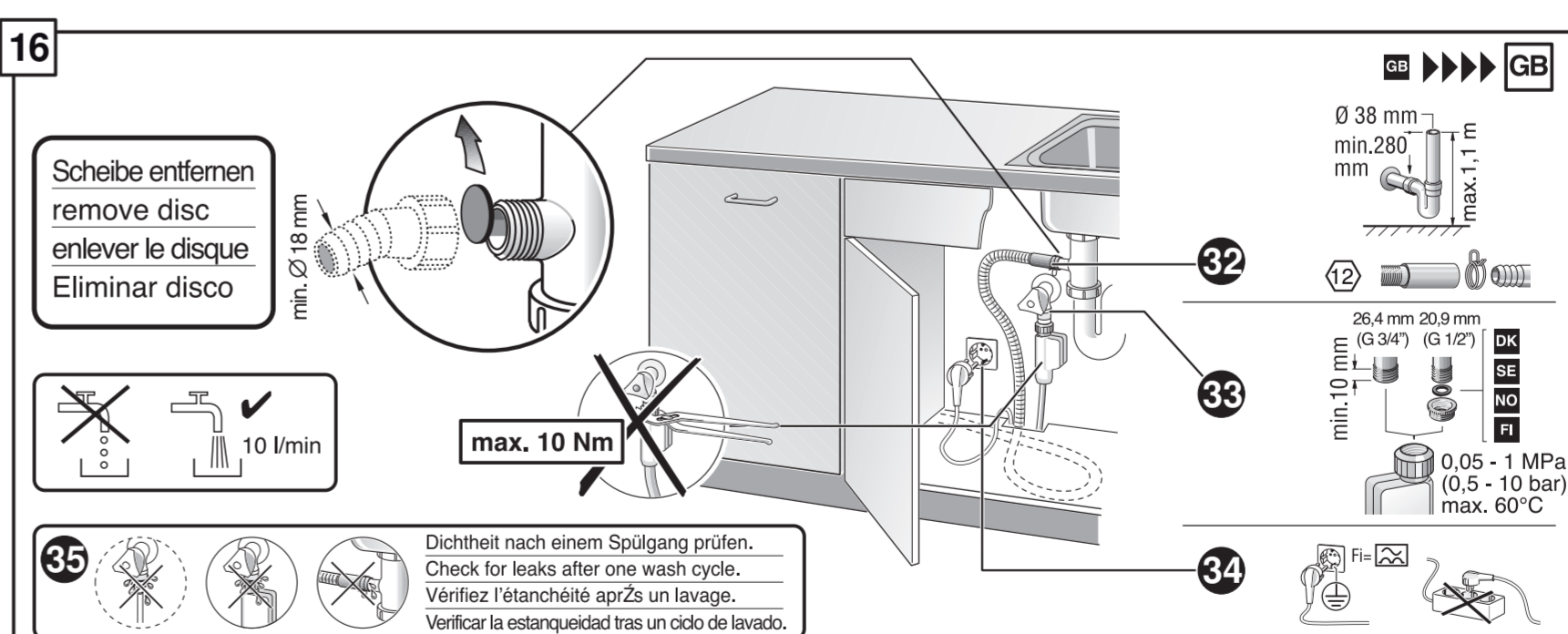
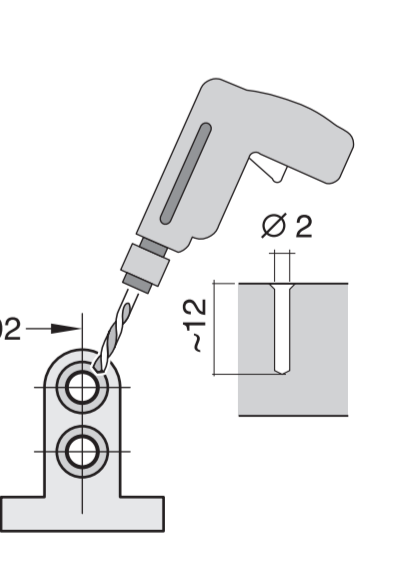
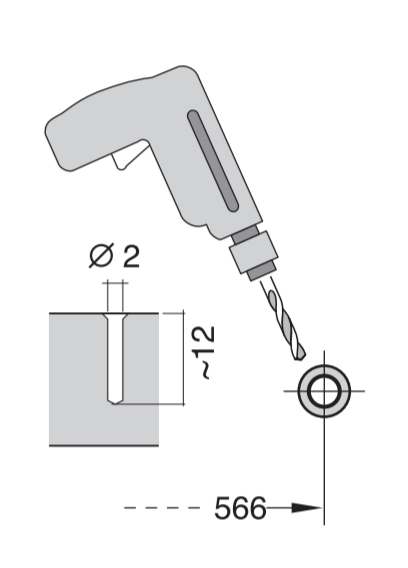
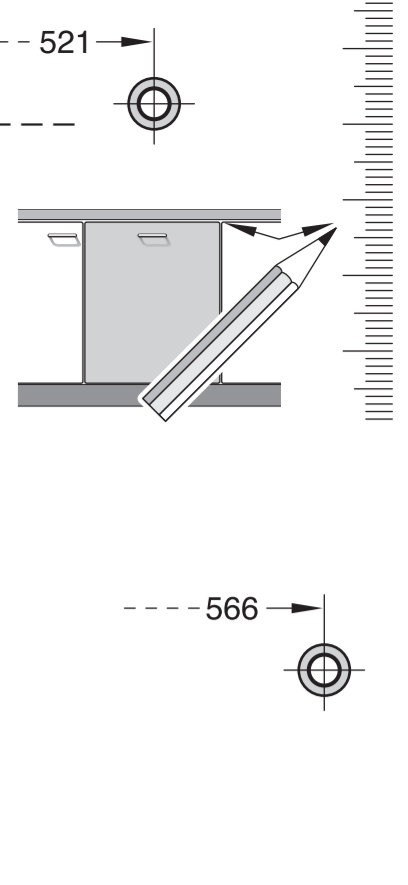


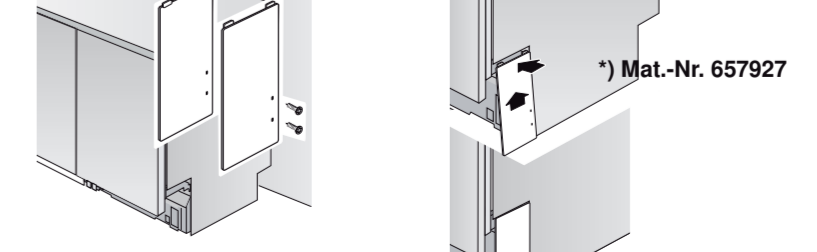
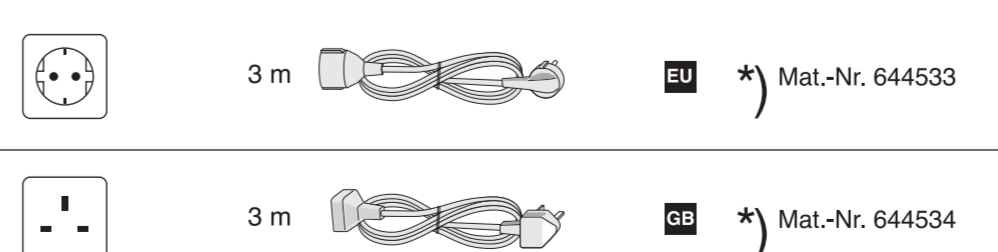
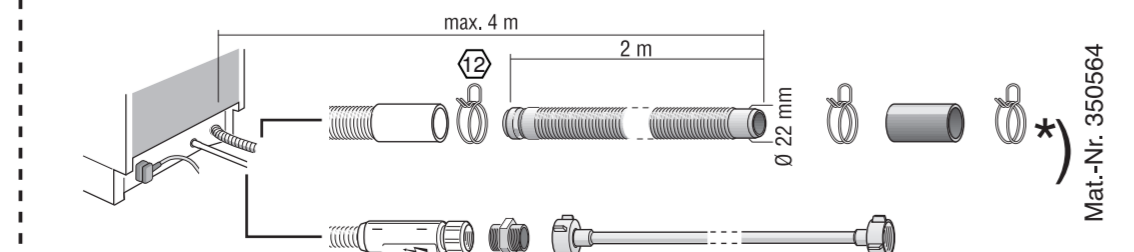
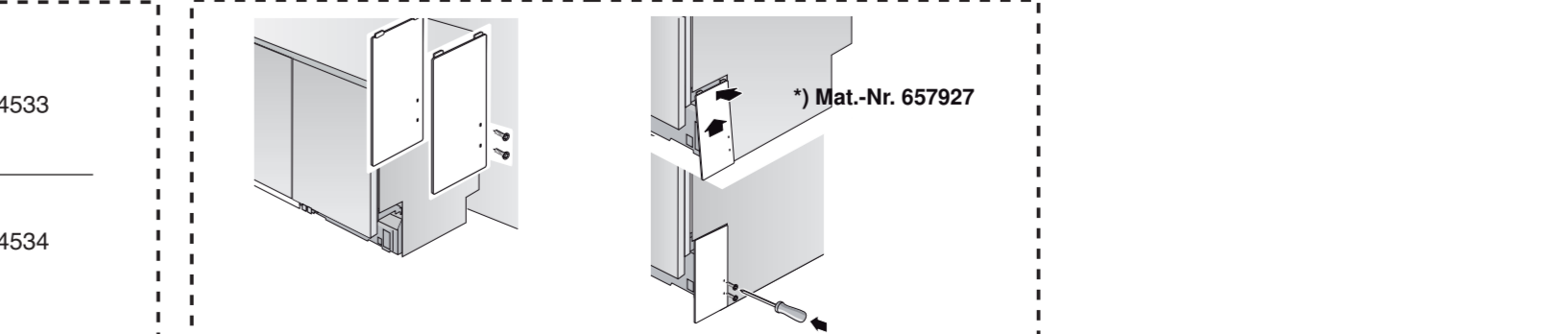
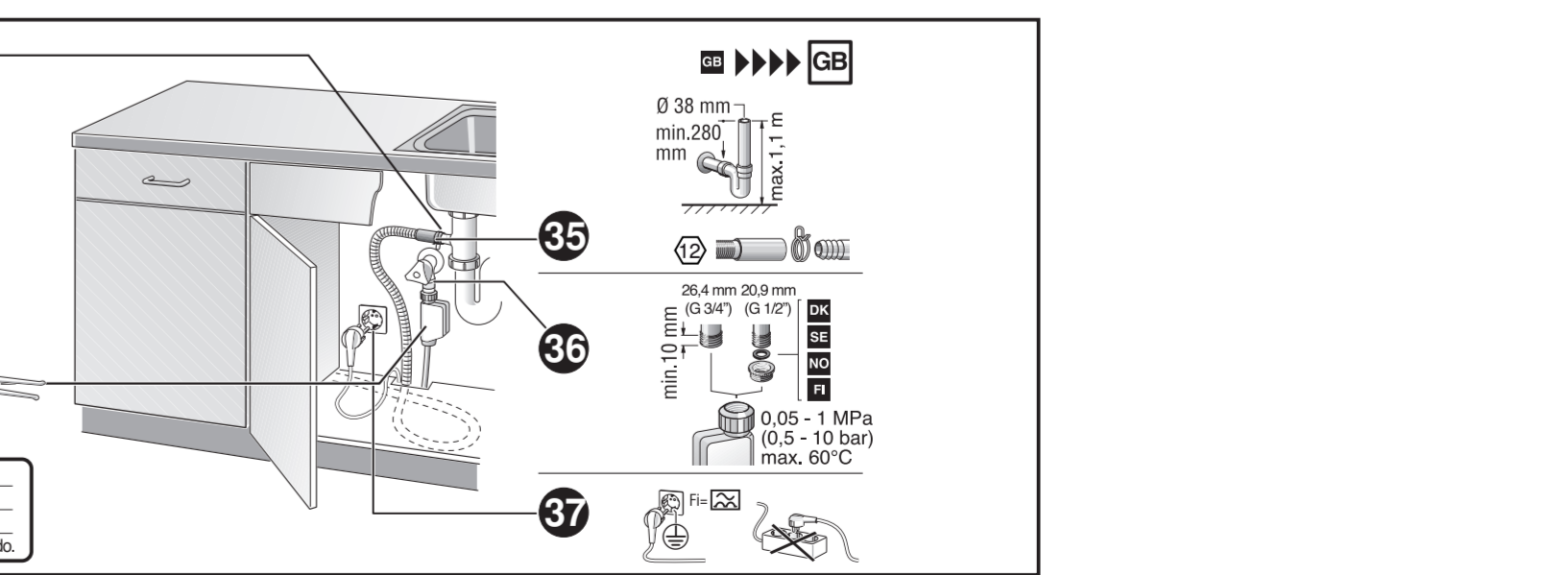
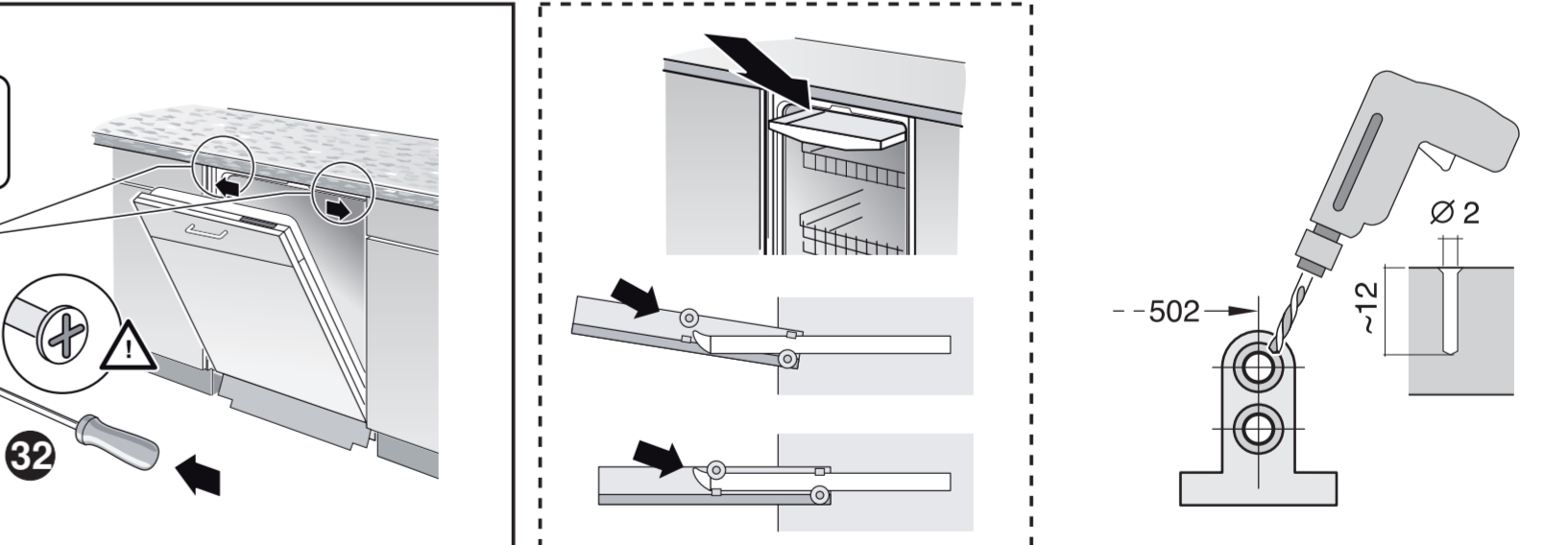
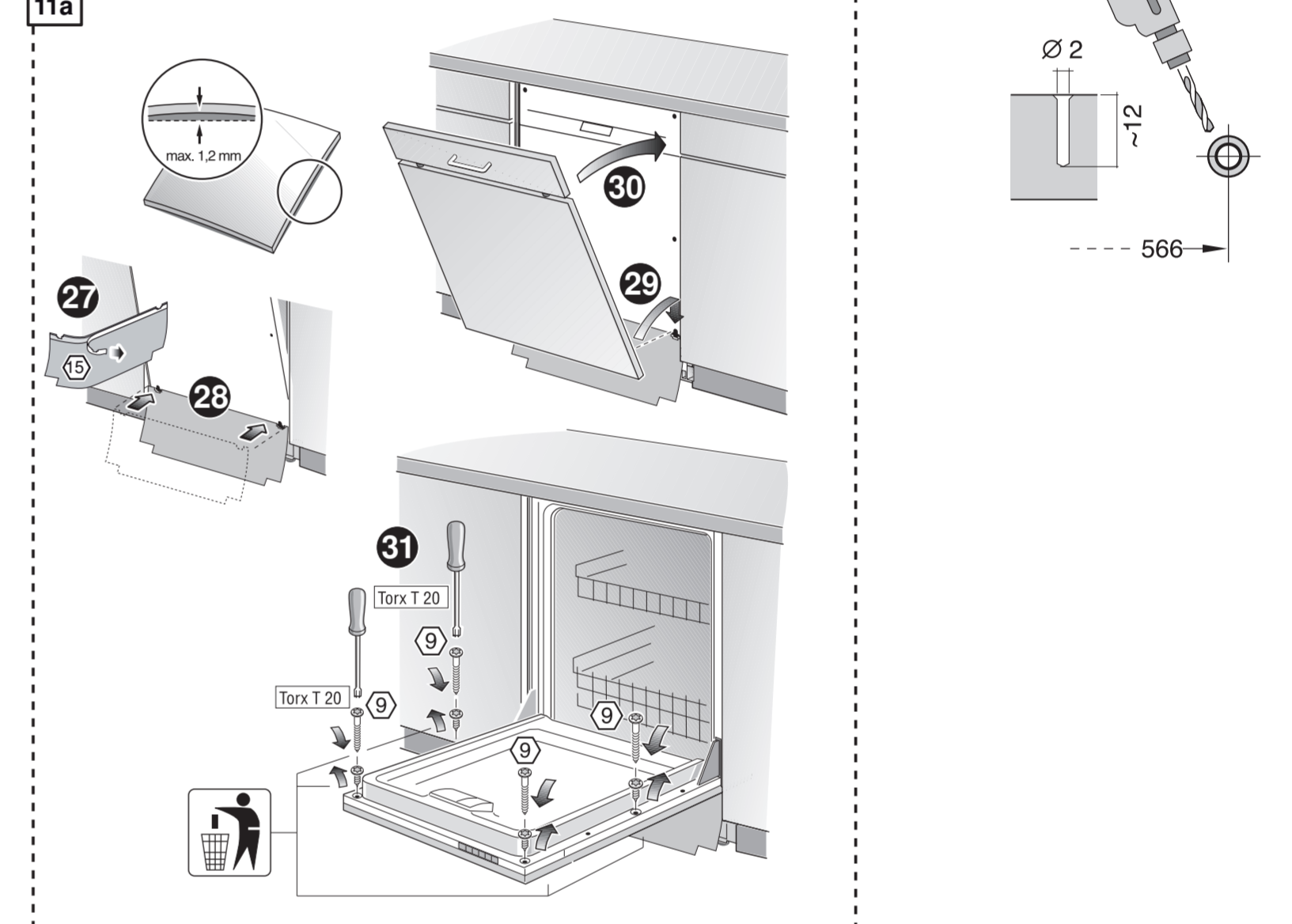
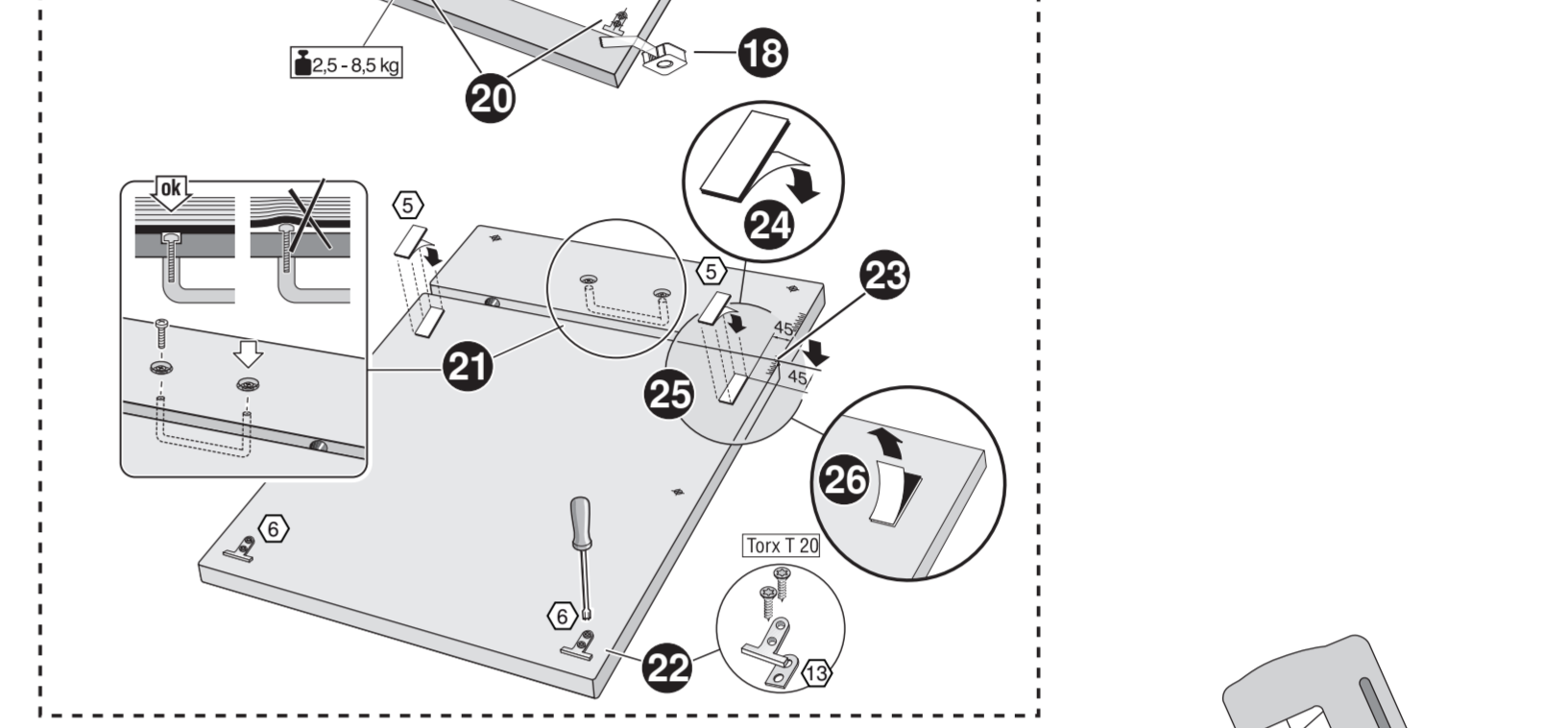
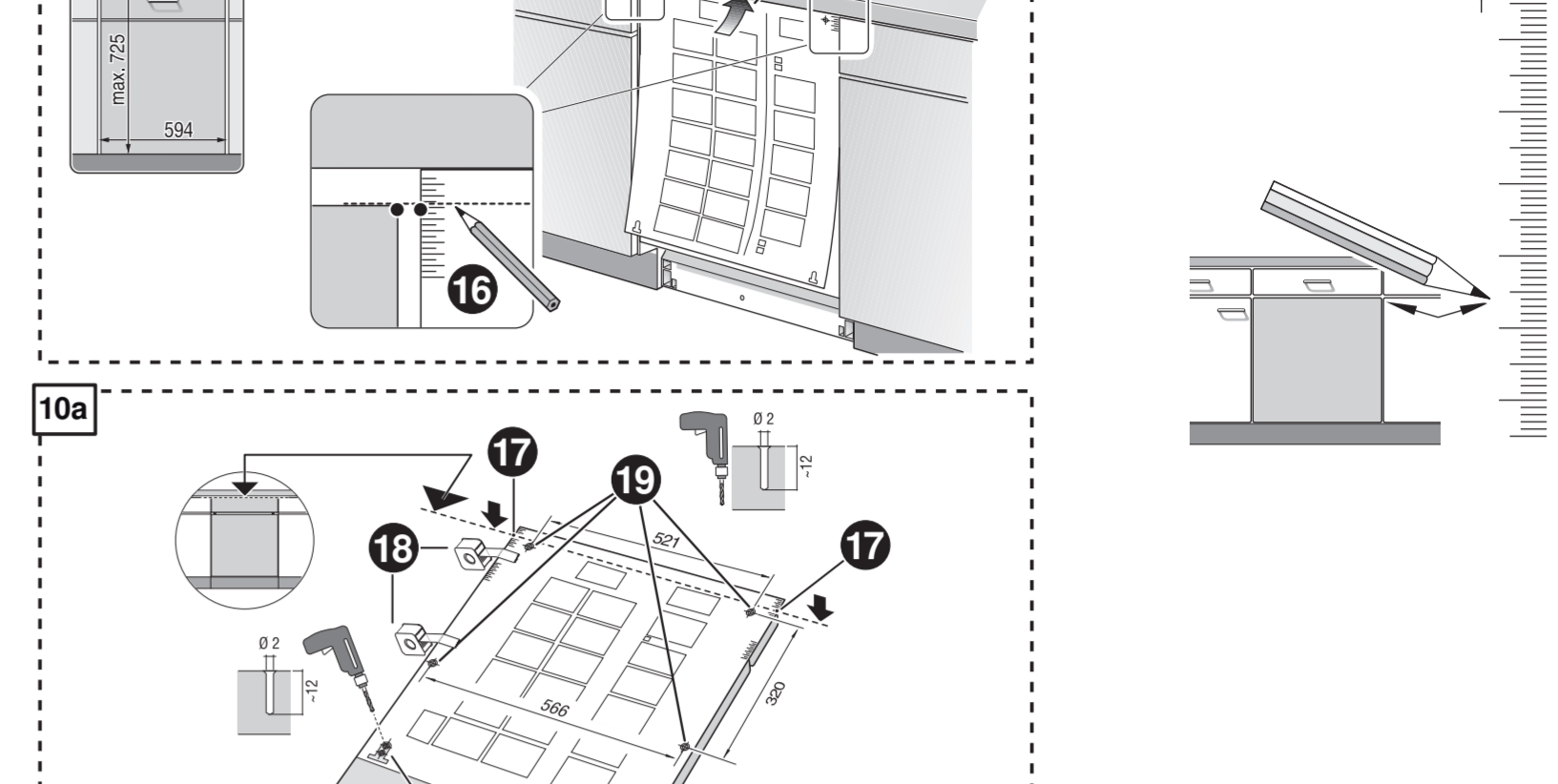
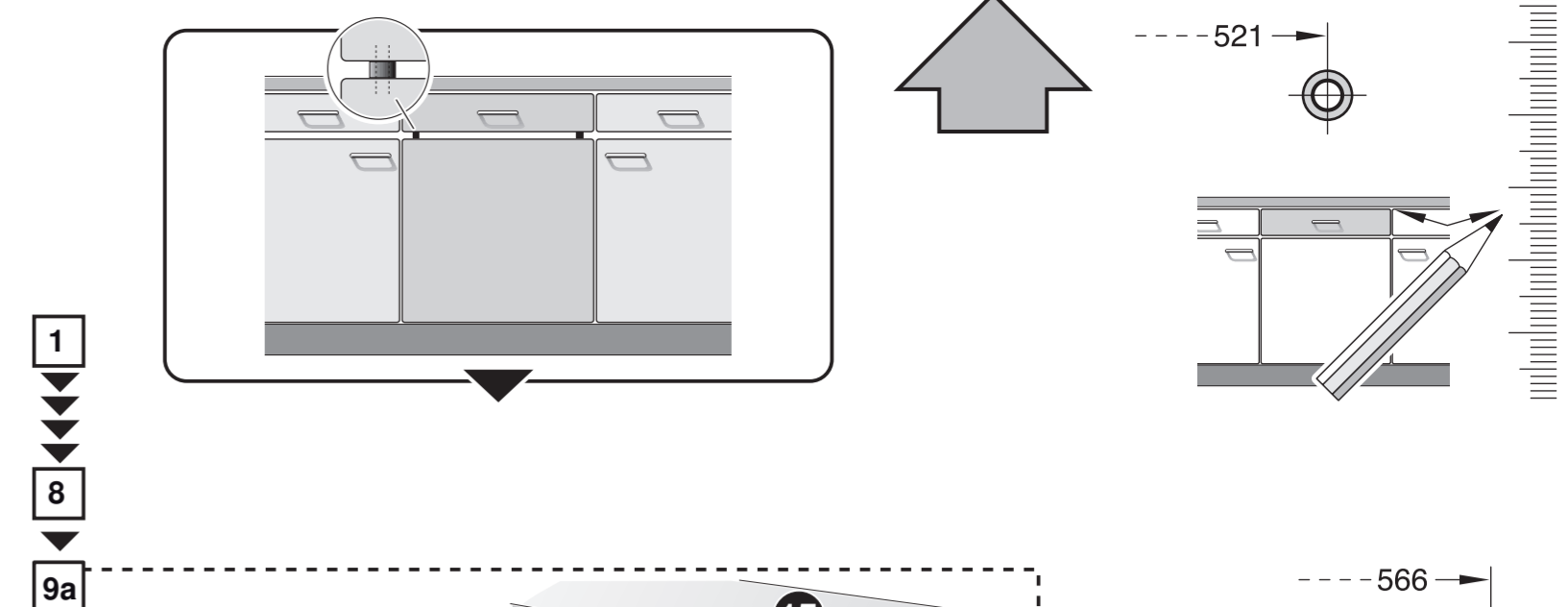
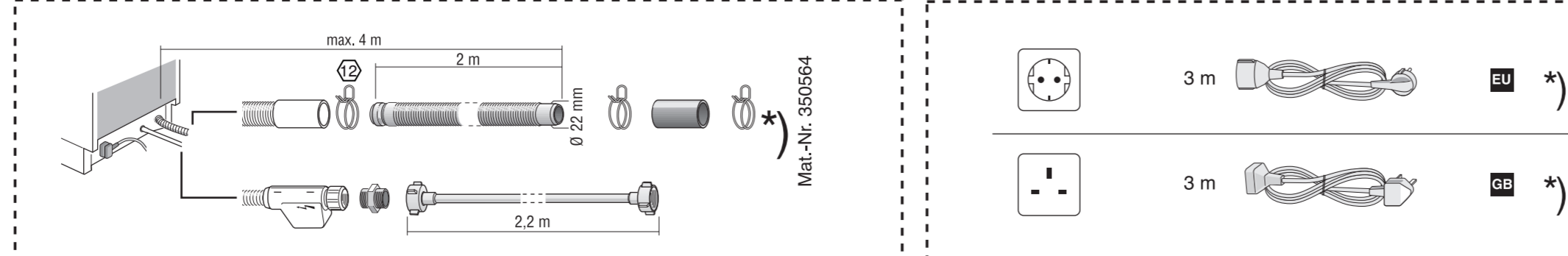
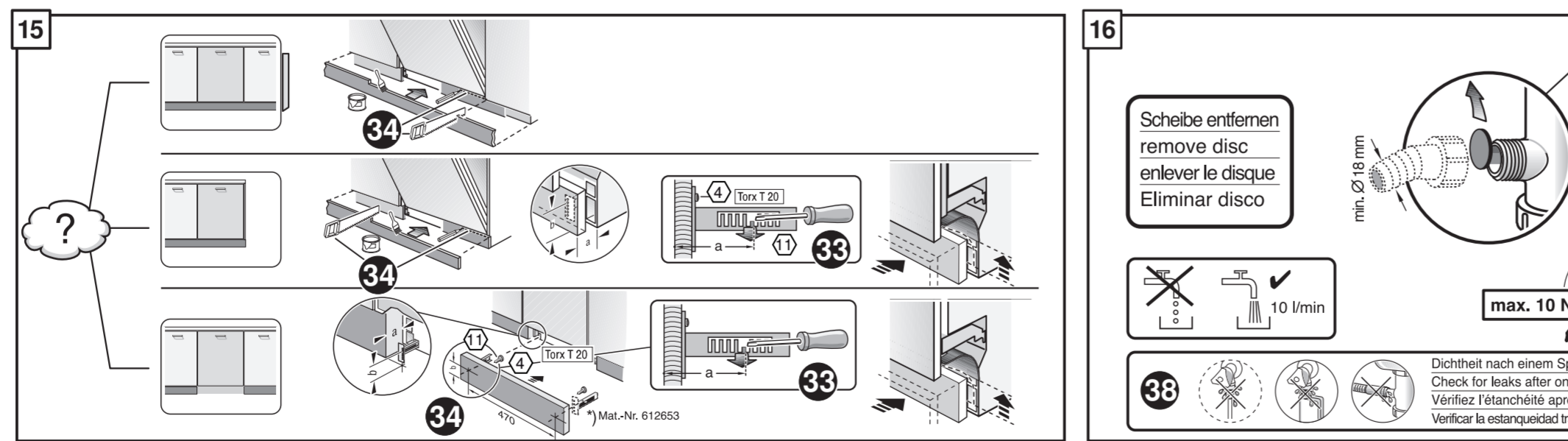
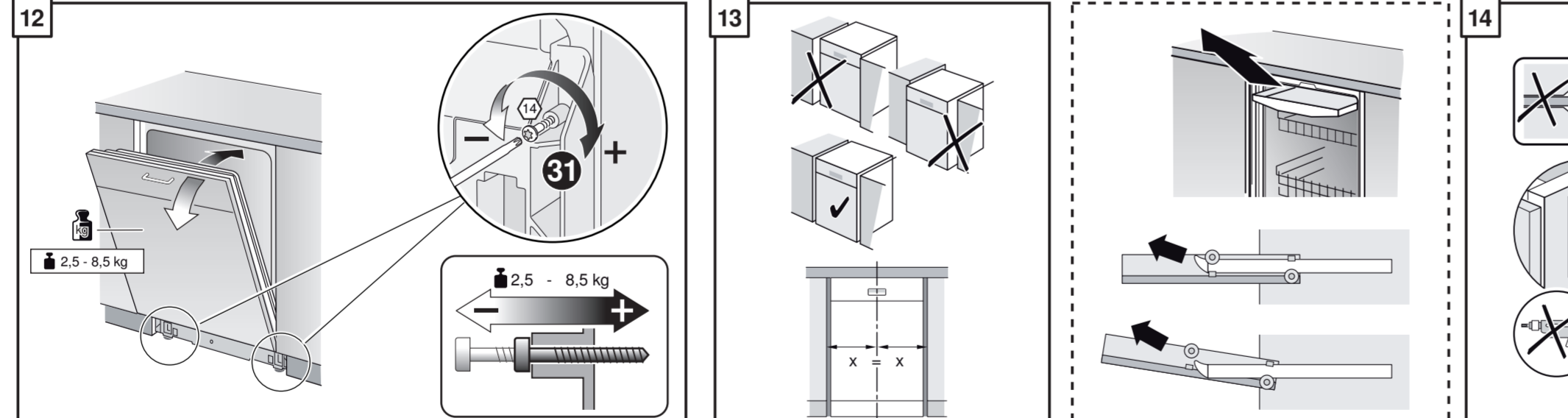
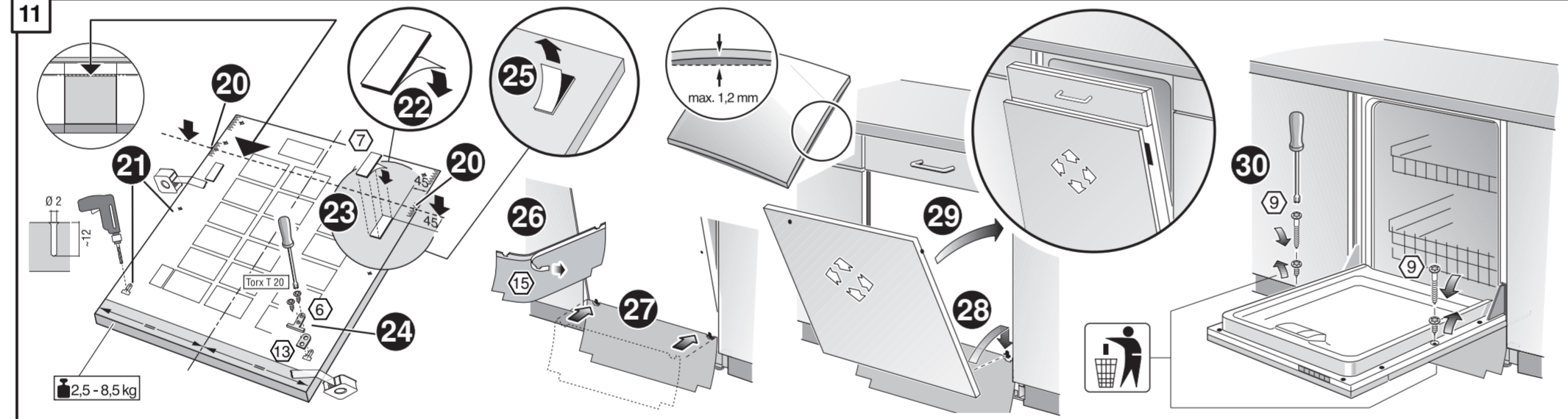
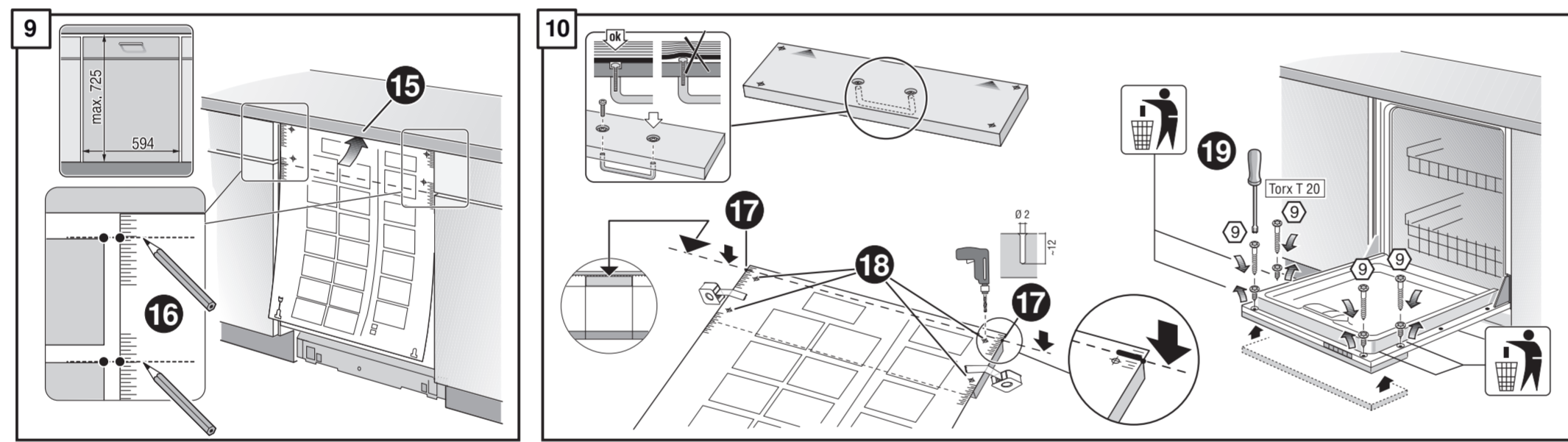
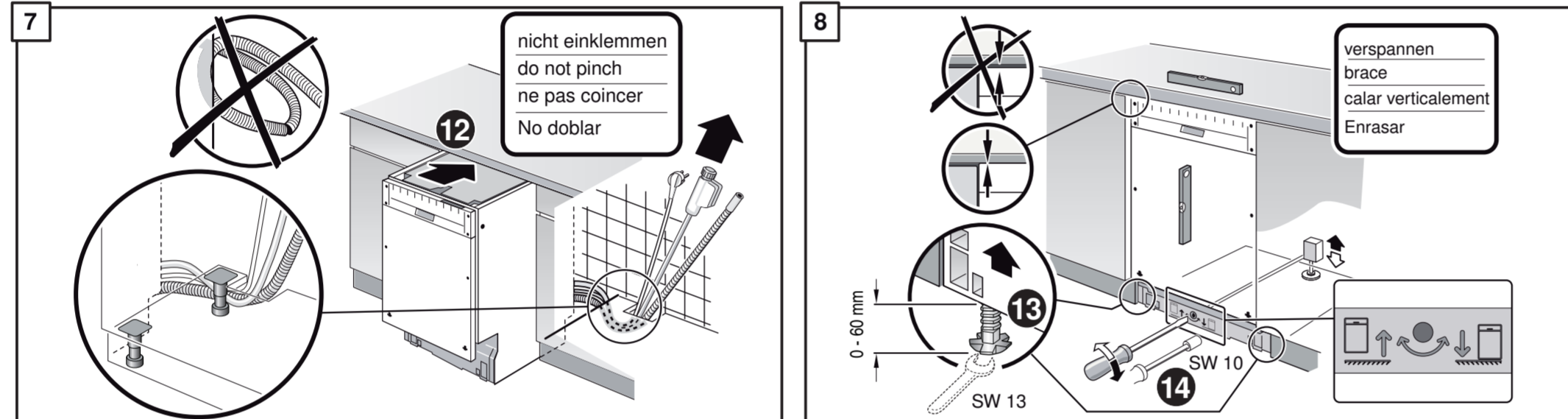
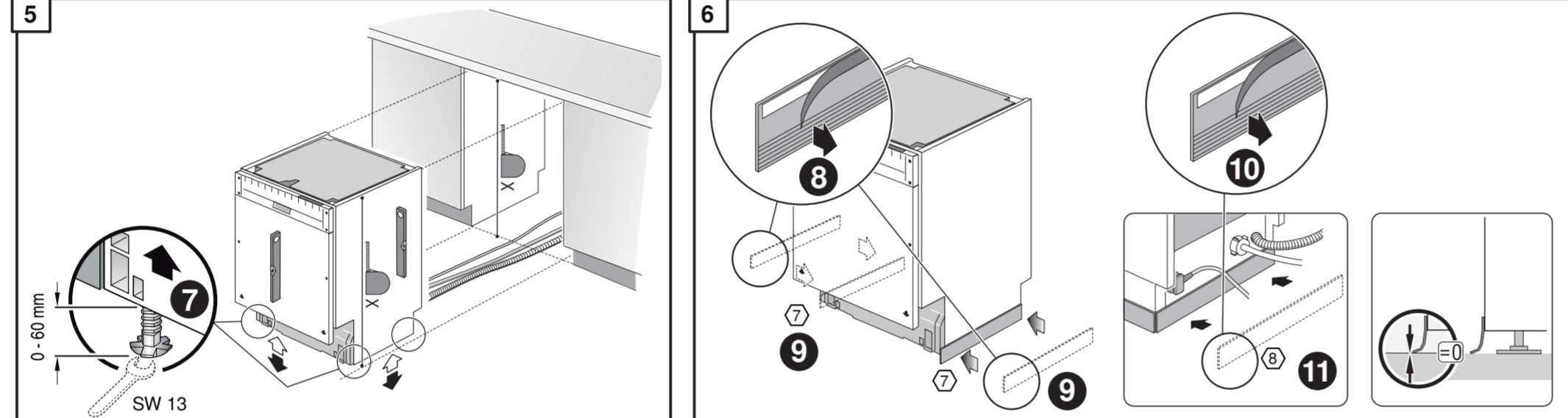
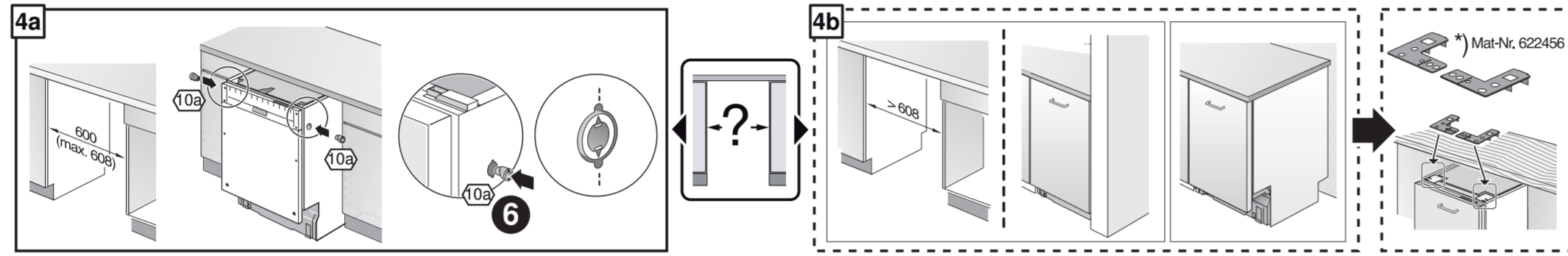
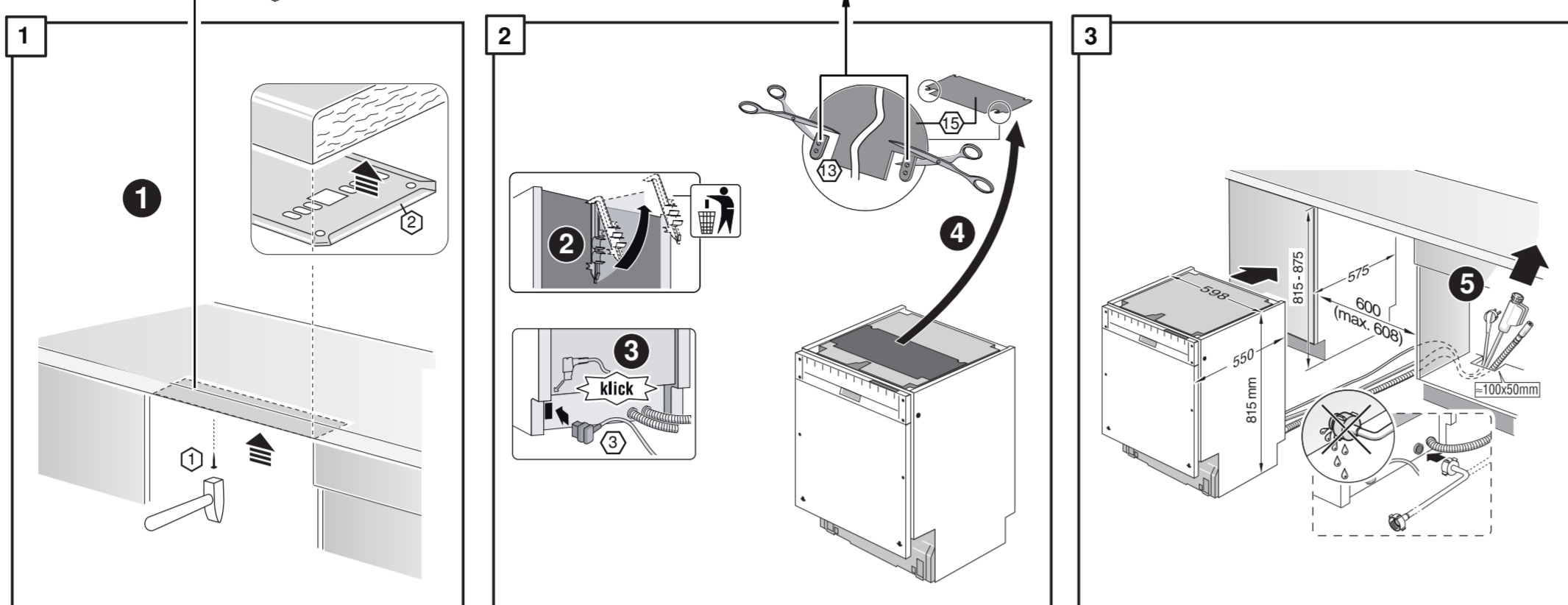
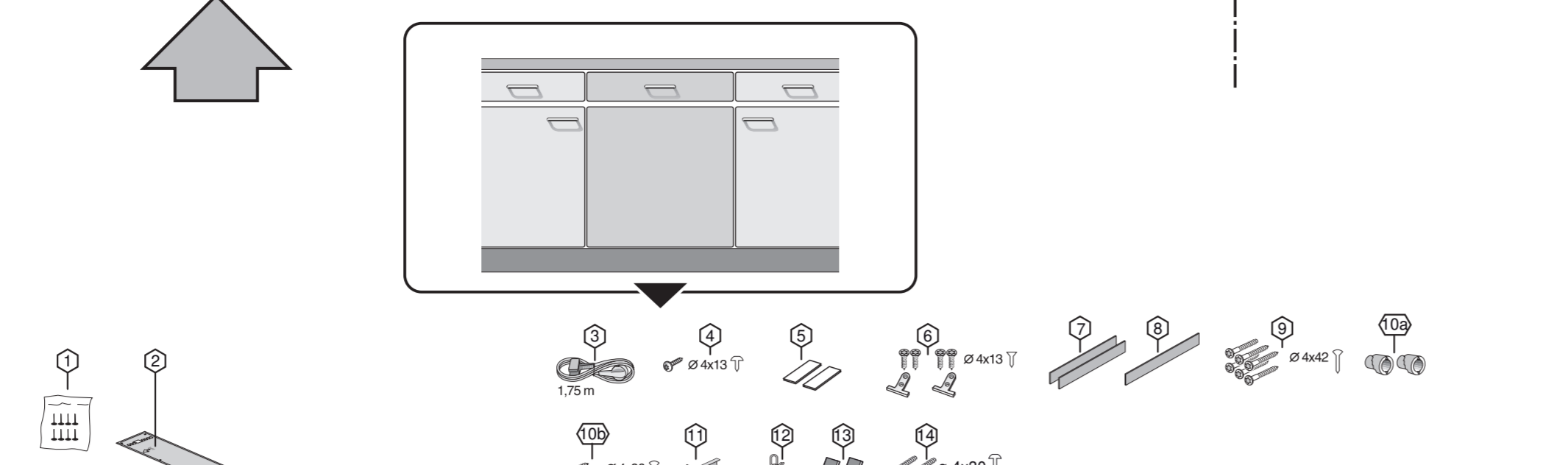
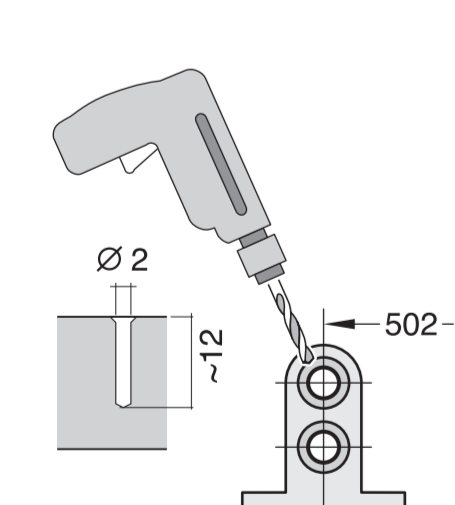
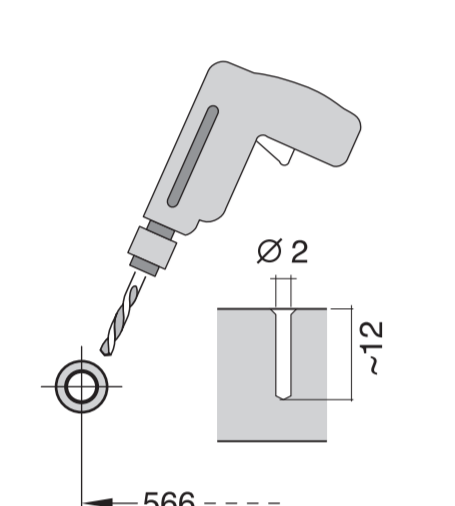
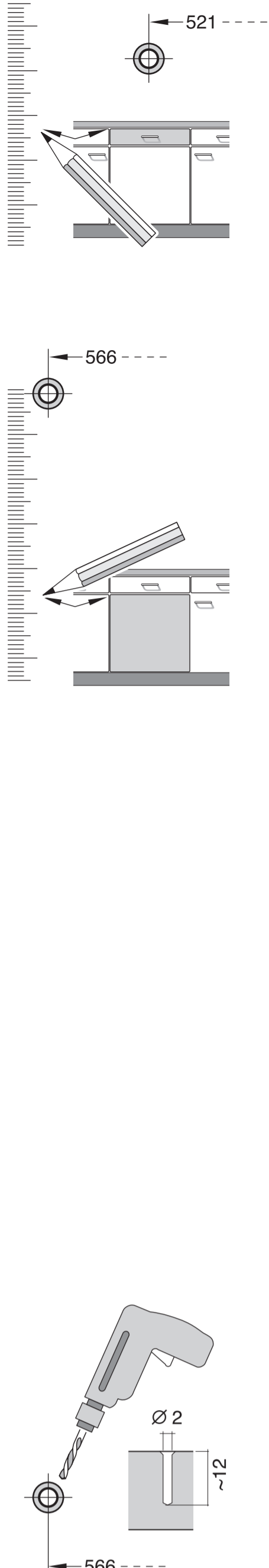
GV 640 Voll-I - 81,5 cm - m. GS - 39 db 9001 003 574 (9409)



- | | | | |
|--|--|---|--|
| <p>de Montageanleitung
 *) über Kundendienst erhältlich
 en Installation instructions
 *) Available from customer service</p> <p>fr Notice de montage
 *) Disponible par le biais du service après-vente</p> <p>nl Montagevoorschrift
 *) Tegen meerprijs bij de Servicedienst verkrijgbaar</p> <p>it Istruzioni per il montaggio
 *) Disponibile presso il servizio assistenza clienti</p> <p>el Οδηγίες τοποθέτησης
 *) Διατίθενται από την υπηρεσία τεχνικής συμπαράστασης πελατών</p> <p>es Instrucciones de montaje
 *) Se puede adquirir a través del Servicio de Asistencia Técnica Oficial de la marca</p> <p>pt Instruções de montagem
 *) Pode ser adquirido nos nossos Serviços Técnicos</p> <p>sv Monteringsanvisning
 *) kan fås via Service</p> | <p>tr Montaj kılavuzu
 *) Yetkili servis üzerinden alınabilir</p> <p>ru Инструкция по монтажу
 *) Можно получить в сервисном центре</p> <p>cs Montážní návod
 *) K dispozici přes servisní službu</p> <p>no Monteringsanvisning
 *) Fås hos kundeservice</p> <p>pl Asemunuszyje
 *) Sałatavissa huoltopalvelusta</p> <p>da Monteringsvejledning
 *) Kan købes hos serviceafdelingen</p> <p>fi Instruktioa montaa
 *) Do uzyskania w punkcie serwisowym</p> <p>hu Szerelési utasítás
 *) A vevőszolgálaton keresztül kapható</p> <p>uk Упуття за монтажу
 *) може дізнатися у службі технічної підтримки</p> | <p>mk Упутство за монтажа
 *) Се добива преку службата за купувачи</p> <p>sl Navodilo za montažo
 *) Lahko nabavite v servisni službi</p> <p>sr Упутство за монтажу
 *) Може се набавити преко сервисне службе</p> <p>ca Monteerimisjuhend
 *) Kõige klienditeeninduselt</p> <p>lv Montāzmo instrukcija
 *) Jā galma gauti klientu aptarnavimo servise</p> <p>et Montāžas pamācība
 *) Var saņemt servisa dienestā</p> <p>sk Návod na montáž
 *) Dostanete v službe zákazníkom</p> <p>hr Udhuzues pñr montim
 *) Sigurnoñet nãprijmet servisit</p> <p>is Uputa za montāžu
 *) Može se dobiti preko servisne službe</p> | <p>fa راهنمای مونتاژ
 *) از مرکز خدمات پس از فروش تهیه فرمایید</p> <p>ar تعليمات التركيب
 *) يمكن طلبها من مراكز خدمة العملاء</p> <p>ko 설치 설명서
 *) 고객센터 서비스 센터에서 구입 가능</p> <p>zh 安裝說明書
 *) 可向售後服務站索取</p> <p>ru Инструкция 3 монтажу
 *) Можно отримати через сервісний центр</p> <p>ro Instrucțiune de montaj
 *) obținabilă la serviciul pentru clienți</p> <p>id Instruksi Pemasangan
 *) bisa didapatkan melalui Customer Service</p> <p>th คู่มือการติดตั้ง
 *) สามารถขอรับได้จากศูนย์บริการลูกค้า</p> |
|--|--|---|--|



- | | |
|-----------------------------------|-----------------------------------|
| <p>3 m EU *) Mat.-Nr. 644533</p> | <p>3 m GB *) Mat.-Nr. 644534</p> |
|-----------------------------------|-----------------------------------|



nicht einklemmen
do not pinch
ne pas coincier
No doblar

verspannen
brace
calar verticalment
Enrasar

Scheibe entfernen
remove disc
enlever le disque
Eliminar disco

Dichtheit nach einem Spülgang prüfen.
Check for leaks after one wash cycle.
Vérifiez l'étanchéité après un lavage.
Verificar la estanqueidad tras un ciclo de lavado.

3 m
3 m

Mat-Nr. 657927