

SIEMENS



Wine storage compartment

CI..W..

siemens-home.bsh-group.com/welcome

en User manual

Register
your
product
online

en Table of Contents

Safety and warning information	3
Information concerning disposal	4
Scope of delivery	4
Installing the appliance	4
Ambient temperature and ventilation	5
Connecting the appliance	5
Getting to know your appliance	6
Switching the appliance on	8
Set the language	8
Setting the temperature unit	8
Setting the temperature	8
Special functions	9
Alarm function	10
Usable capacity	10
Placing bottles in the refrigerator	10
Practical tips for storing wine	11
Drinking temperatures	11
Interior fittings	11
Switching off and disconnecting the appliance	11
Defrosting	11
Cleaning the appliance	12
Odours	12
Light (LED)	12
Tips for saving energy	12
Operating noises	13
Eliminating minor faults yourself	14
Customer service	14

⚠ Safety and warning information

Before you switch ON the appliance

Please read the operating and installation instructions carefully! They contain important information on how to install, use and maintain the appliance.

The manufacturer is not liable if you fail to comply with the instructions and warnings. Retain all documents for subsequent use or for the next owner.

Technical safety

The appliance contains a small quantity of environmentally friendly but flammable refrigerant R600a. Ensure that the tubing of the refrigerant circuit is not damaged during transportation and installation. Leaking refrigerant may cause eye injuries or ignite.

If damage has occurred

- Keep naked flames and/or ignition sources away from the appliance,
- thoroughly ventilate the room for several minutes,
- switch off the appliance and pull out the mains plug,
- inform customer service.

The more refrigerant an appliance contains, the larger the room must be in which the appliance is situated. Leaking refrigerant can form a flammable gas-air mixture in rooms which are too small.

The room must be at least 1 m³ per 8 g of refrigerant. The amount of refrigerant in your appliance is indicated on the rating plate inside the appliance.

If the power cord of this appliance is damaged, it must be replaced by the manufacturer, customer service or a similarly qualified person. Improper installations and repairs may put the user at considerable risk.

Repairs may be performed by the manufacturer, customer service or a similarly qualified person only.

Only original parts supplied by the manufacturer may be used. The manufacturer guarantees that only these parts satisfy the safety requirements.

A extension cable may be purchased from customer service only.

Important information when using the appliance

- Never use electrical appliances inside the appliance (e.g. heater, electric ice maker, etc.). Explosion hazard!
- Never defrost or clean the appliance with a steam cleaner! The steam may penetrate electrical parts and cause a short-circuit. Risk of electric shock!
- Do not use pointed or sharp-edged implements to remove frost or layers of ice. You could damage the refrigerant tubes. Leaking refrigerant may cause eye injuries or ignite.
- Do not store products which contain flammable propellants (e.g. spray cans) or explosive substances in the appliance. Explosion hazard!
- Do not stand on or lean heavily against base of appliance, drawers or doors, etc
- For defrosting and cleaning, pull the mains plug out or switch off the fuse. Do not pull out the mains plug by tugging on the power cord.
- Store high-percentage alcohol tightly closed and standing up.
- Keep plastic parts and the door seal free of oil and grease. Otherwise, parts and door seal will become porous.
- Never cover or block the ventilation openings of the appliance!
- **Avoiding placing children and vulnerable people at risk:**
At risk are children, people who have limited physical, mental or sensory abilities, as well as people who have inadequate knowledge concerning safe operation of the appliance.
Ensure that children and vulnerable people have understood the hazards. A person responsible for safety must supervise or instruct children and vulnerable people who are using the appliance.
Only children from 8 years and above may use the appliance.
Supervise children who are cleaning and maintaining the appliance.
Never allow children to play with the appliance.

Children in the household

- Keep children away from packaging and its parts.
Danger of suffocation from folding cartons and plastic film!
- Do not allow children to play with the appliance!
- If the appliance features a lock: keep the key out of the reach of children!

General regulations

This appliance is designed exclusively for the storage of wine.

This appliance is intended for use in the home and the home environment.

The appliance is suppressed according to EU Directive 2004/108/EC.

The refrigeration circuit has been checked for leaks.

This product complies with the relevant safety regulations for electrical appliances (EN 60335-2-24).

This appliance is intended for use up to a maximum height of 2000 metres above sea level.

2. Cut off the power cord and discard with the mains plug.
3. Do not take out the trays and receptacles: children are therefore prevented from climbing in!
4. Do not allow children to play with the appliance once it has spent its useful life. Danger of suffocation!

Refrigerators contain refrigerant and gases in the insulation. Refrigerant and gases must be disposed of professionally. Ensure that tubing of the refrigerant circuit is not damaged prior to proper disposal.

Scope of delivery

After unpacking all parts, check for any damage in transit.

If you have any complaints, please contact the dealer from whom you purchased the appliance or our customer service.

The delivery consists of the following parts:

- Built-in appliance
- Interior fittings (depending on model)
- Bag containing installation materials
- Operating instructions
- Installation manual
- Customer service booklet
- Warranty enclosure
- Information on the energy consumption and noises

Information concerning disposal

Disposal of packaging

The packaging protects your appliance from damage during transit. All utilised materials are environmentally safe and recyclable. Please help us by disposing of the packaging in an environmentally friendly manner.

Please ask your dealer or inquire at your local authority about current means of disposal.

Disposal of your old appliance

Old appliances are not worthless rubbish! Valuable raw materials can be reclaimed by recycling old appliances.



This appliance is labelled in accordance with European Directive 2012/19/EU concerning used electrical and electronic appliances (waste electrical and electronic equipment - WEEE). The guideline determines the framework for the return and recycling of used appliances as applicable throughout the EU.

Warning

Redundant appliances

1. Pull out the mains plug.

Installing the appliance

Have a technician install and connect the appliance according to the enclosed installation instructions.

Transporting

The appliance is heavy. Secure in position during transportation and installation.

Due to the weight/dimensions of the appliance and to minimise the risk of injury and damage to the appliance at least two persons are necessary to set-up the appliance safely.

Installation location

A dry, well ventilated room is suitable as an installation location. The installation location should not be exposed to direct sunlight and not placed near a heat source, e.g. a cooker, radiator, etc. If installation next to a heat source is unavoidable, use a suitable insulating plate or observe the following minimum distances from the heat source:

- 3 cm to electric or gas cookers.
- 30 cm to an oil or coal-fired cooker.

The floor of the installation location must not give way; if required, reinforce floor.

Ambient temperature and ventilation

Ambient temperature

The climate class can be found on the rating plate. The climate class indicates within which ambient temperatures the appliance can be operated.

Climate class	Permitted ambient temperature
SN	+10 °C to 32 °C
N	+16 °C to 32 °C
ST	+16 °C to 38 °C
T	+16 °C to 43 °C

Note

The appliance is fully functional within the room temperature limits of the indicated climatic class. If an appliance of climatic class SN is operated at colder room temperatures, the appliance will not be damaged up to a temperature of +5 °C.

Ventilation

Conduction of the heated air must not be obstructed. Otherwise, the refrigeration unit must work harder. This increases power consumption. Therefore: Never cover or block the ventilation opening!

Connecting the appliance

Have a technician install and connect the appliance according to the enclosed installation instructions.

Do not remove the transportation protection devices from the shelves and storage compartments until the appliance has been installed.

In addition to the statutory national regulations, observe the connection conditions of the local power supply companies.

After installing the appliance, wait at least 1 hour until the appliance starts up. During transportation the oil in the compressor may have flowed into the refrigeration system.

Before switching on the appliance for the first time, clean the interior of the appliance (see chapter "Cleaning the appliance").

Electrical connection

The socket must be near the appliance and also freely accessible following installation of the appliance.

The appliance complies with the protection class I. Connect the appliance to 220-240 V/50 Hz alternating current via a correctly installed socket with protective conductor. The socket must be fused with a 10 to 16 A fuse.

For appliances operated in non-European countries, check whether the stated voltage and current type on the rating plate match the values of your mains supply. These specifications can be found on the rating plate (see chapter "Customer service").

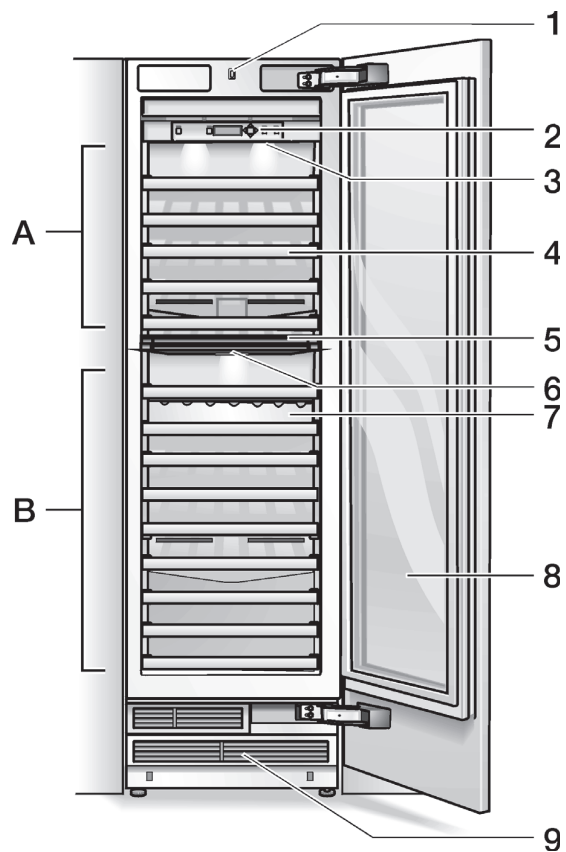
Warning

Never connect the appliance to electronic energy saver plugs.

Our appliances can be used with mains and sine-controlled inverters. Mains-controlled inverters are used for photovoltaic systems which are connected directly to the national grid. Sine-controlled inverters must be used for isolated applications (e.g. on ships or in mountain lodges) which are not connected directly to the national grid.

Getting to know your appliance

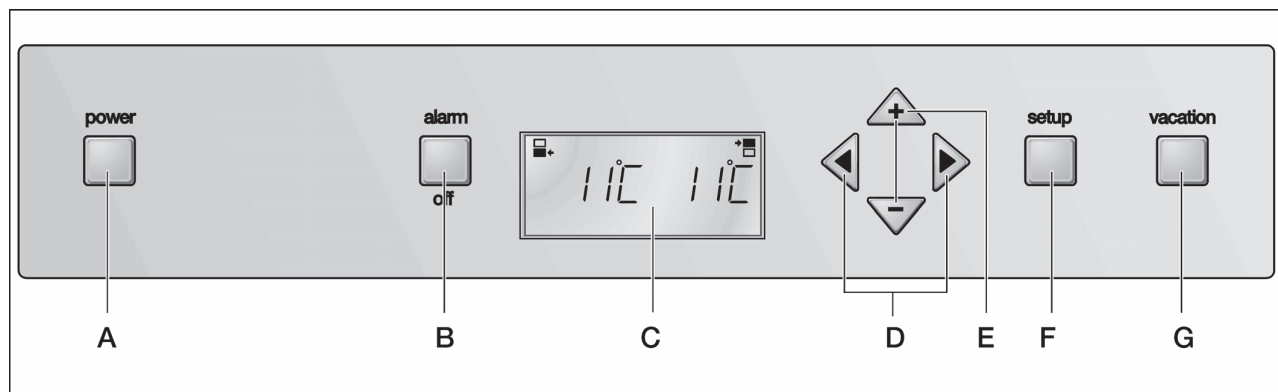
These operating instructions refer to several models. The diagrams may differ.



A Upper climatic zone
B Lower climatic zone

1 Light switch
2 Controls
3 Light (LED) with switches for presentation lights
4 Shelf for wine bottles
5 Partition
6 Light (presentation light)
7 Presentation attachment
8 Glass door
9 Ventilation

Controls



A On/Off button

Serves to switch the whole appliance on and off.

B Alarm button

Used to switch off the warning signal, (see chapter “Alarm function”).

C Display panel

The temperatures in both climatic zones of the refrigerator compartment are shown in the display panel. Activated special functions are shown via “symbol”.

The menus and setting options which are available are represented on the display panel in the setup mode, see chapter “Special functions”.

D Selection buttons

The temperature setting is activated using the selection buttons (see chapter Setting the temperature).

For selecting a menu in the setup mode (see chapter Special functions).

E Setting buttons

The temperature can be changed using the setting buttons (see chapter “Setting the temperature”).

More settings can be selected in the setup mode, (see chapter “Special functions”).

F “setup” button

This button starts and ends the setup mode. If the setup mode is ended using the setup button, the changes which have been made are stored.

G Button Vacation

Is used to switch vacation mode on and off, (see chapter Special functions, section Vacation mode).

Note

A sound can be heard every time a button is actuated if this function is activated in the sound menu during the setup mode.

Symbols in the display field



Display for the upper climatic zone.



Display for the lower climatic zone



“Humidity” function is activated (see chapter “Special functions”, section “Humidity function”).



Holiday mode is activated, see chapter Special functions.



For the setting options in the set up mode, see chapter Special functions.



A warning message is displayed, see chapter Alarm function.

Switching the appliance on

Switch on the appliance with the On/Off button. The appliance begins to cool. Light is switched on when the door is open.

Operating tip

After the appliance has been switched on, it may take several hours until the set temperature has been reached.

Set the language

The display languages can be changed according to the table in the chapter "Special functions", "Setup mode".

In order to change the display language:

1. Press setup button.
2. Press the < or > setting button, until the set language is displayed.
3. Press the + or - setting button, until the desired language is displayed.
4. Press the setup button, in order to store the settings. The set temperature is displayed again in the fascia.

Setting the temperature unit

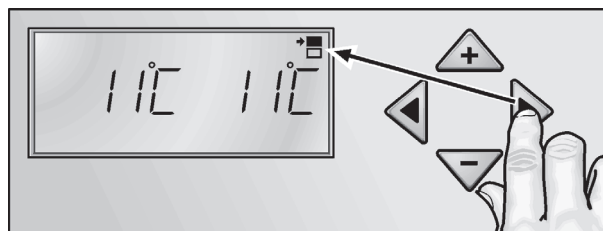
The temperature can be displayed in degrees Celsius (°C) or degrees Fahrenheit (°F).

1. Press setup button. The first menu (temperature unit) is displayed.
2. Press the + or - setting button in order to switch between degrees Fahrenheit (°F) and degrees Celsius (°C).
3. Press the setup button, in order to store the settings. The set temperature is displayed again in the fascia.

Setting the temperature

The temperatures in both climatic zones can be set independently of each other from +5 °C to +20 °C. We recommend a setting of +11 °C.

1. Activate the setup mode with the selection button >.
2. Select the required climatic zone.



3. Set the desired temperature with the + (warmer) or - (cooler) setting buttons.

Special functions

The following special functions can be selected or displayed:

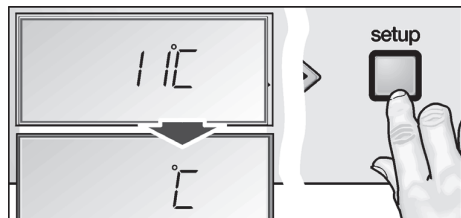
Setup mode

In Setup mode you can make your personal settings.

Switching on

Press setup button.

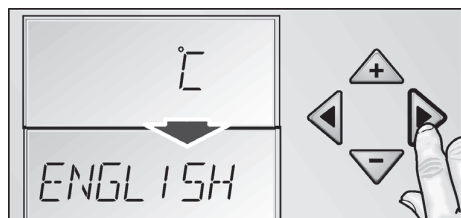
The first menu (temperature unit) is displayed in the fascia.



Making settings

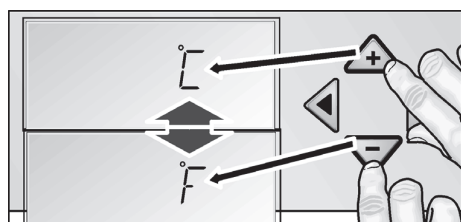
1. Switch on setup mode.
2. Press the selection button < or >.

The next menu is displayed and its current setting (mostly **ON** or **OFF**).



3. Press the setting button + or -.

The setting is saved, if the next menu is selected using < or >.



Switching off

Press setup button.

All of the changed settings are stored.

Note

If no button is selected within 20 seconds, the setup mode ends automatically. All of the changed settings are stored. The set temperature is displayed again in the fascia.

Menus in the setup mode

The following settings can be made.

Menu	Possible setting
Temperature unit	°C (degrees Celsius)
	°F (degrees Fahrenheit)
Language	Deutsch
	English
	French
	Danish
	Finnish
	Greek
	Dutch
	Italian
	Polish
	Portuguese
	Norwegian
	Russian
	Swedish
Spanish	
Turkish	
Czech	
Sound	On
	Off
Humidity (lower climatic zone)	On
	Off
Humidity (upper climatic zone)	On
	Off

Vacation mode

If absent for a prolonged period, you can switch the appliance to energy-saving vacation mode.

When vacation mode is switched on:

- both climatic zones are set to a temperature of 12 °C,
- the humidity function is switched off,
- the light is switched off.

Switching on

Press Vacation button.

VACATION is displayed in the display panel.

Switching off

Press Vacation button.

The previous settings and temperature values are once again activated.

Rest mode

When Rest mode is switched on, the following settings are switched off:

- Acoustic signal
- Interior light
- Messages on the display panel
- The background illumination of the display panel is reduced
- Buttons are locked

Switching on

1. Press and hold down the setting button **+**.
2. Press Vacation button.
3. Press the setting button **+** and hold down for 3 seconds longer.

The symbol **VACATION** flashes on the display panel and RESTMODE is displayed.

Switching off

Press Vacation button.

The previous settings and temperature values are once again activated.

Humidity function

Independent from one another, the air humidity in the two climatic zones can be increased.

Switching on

1. Press setup button.
2. Press selection button **>** until **HUMIDITY** and the current setting (**ON/OFF**) are displayed for the particular climatic zone.
3. Press the setting button **+**, in order to reset the setting.
4. Press the setup button, in order to save the setting. **HUMIDITY** is displayed in the display panel.

Switching off

1. Press setup button.
2. Press selection button **>** until **HUMIDITY** and the current setting (**ON/OFF**) are displayed for the particular climatic zone.
3. Press the setting button **-**, in order to reset the setting.
4. Press the setup button, in order to save the setting. **HUMIDITY** goes out on the display panel.

Alarm function

Switching off the warning signal

Press the alarm button to switch off the warning signal.

Door alarm

The door alarm switches on if an appliance door is left open for longer than three minutes. Close the door to switch off the warning signal.

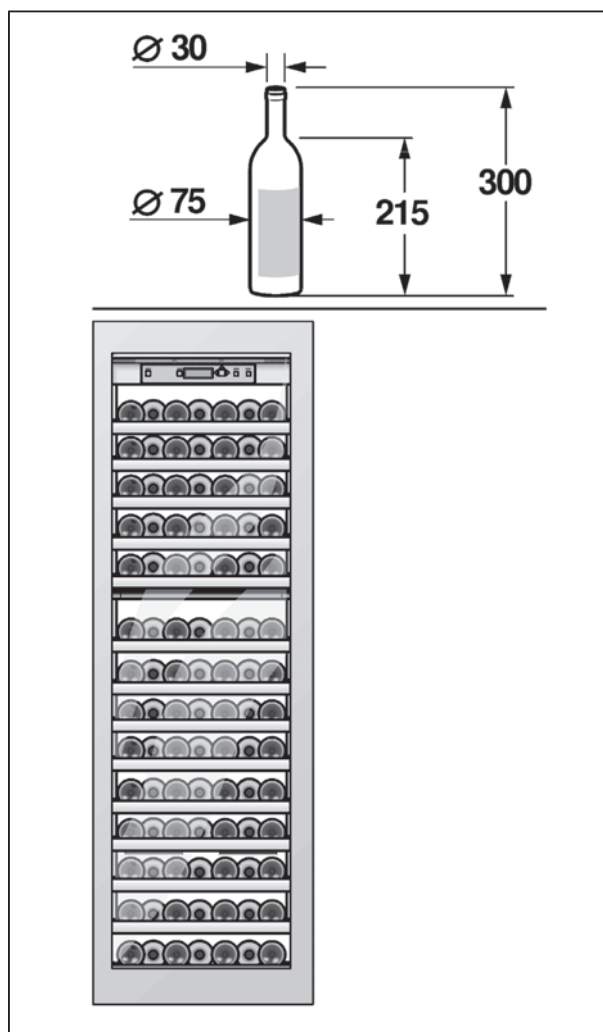
Usable capacity

Information on the usable capacity can be found inside your appliance on the rating plate (see diagram at chapter "Customer service").

Placing bottles in the refrigerator

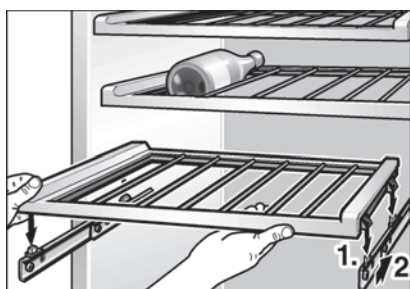
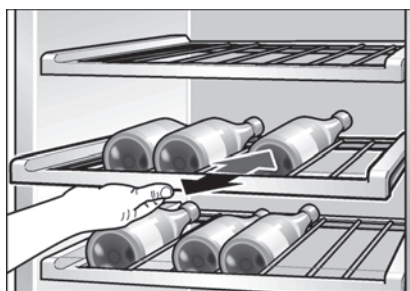
Storage examples

The following image shows a storage example of 98 commercially available 0.75 l Bordeaux bottles.



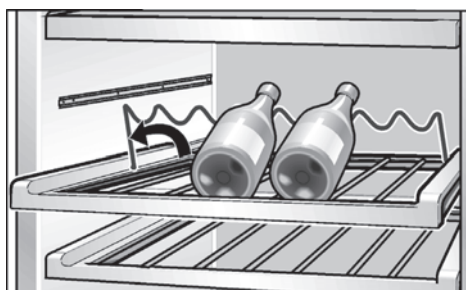
Practical tips for storing wine

- Unpack bottles of wine – do not leave in crates or cardboard boxes – before storing in the refrigerator compartment.
- Place old bottles so that the cork is always wet. There should never be an air gap between the wine and the cork.
- The open bottle shelves are especially suitable because they do not interrupt the air circulation. As a result, the atmospheric humidity which condenses on the bottles quickly dries again.
- Before the wine is drunk, it should be “warmed up” (chambré): Place e.g. rosé wine on the table approx. 2–5 hours before drinking, red wine 4–5 hours before drinking. The wine will then be at the correct drinking temperature. Sparkling wine and Champagne should be cooled in the refrigerator shortly before drinking.
- Remember that wine should always be cooled slightly lower than the ideal serving temperature, as its temperature increases as soon as it is poured into a glass!



Presentation attachment

You can take out or vary the attachment as required.



Drinking temperatures

The correct serving temperature is crucial for the taste and therefore your enjoyment of the wine.

We recommend serving wine at the following drinking temperatures:

Type of wine	Drinking temperature
Bordeaux red	18 °C
Côtes du Rhône red/ Barolo	17 °C
Burgundy red/ Bordeaux red	16 °C
Port	15 °C
Young Burgundy red	14 °C
Young red wine	12 °C
Young Beaujolais/all white wines with little residual sugar	11 °C
Old white wines/ Chardonnay	10 °C
Sherry	9 °C
Young white wines from late vintage	8 °C
White wines Loire/ Entre-deux-Mers	7 °C

Interior fittings

Taking out the shelves

You can take out or vary the shelves inside the appliance as required.

Switching off and disconnecting the appliance

Switching the appliance off

Press the On/Off button.
Refrigeration unit and light switch off.

Disconnecting the appliance

If you do not use the appliance for a prolonged period:

1. Switch off the appliance.
2. Pull out mains plug or switch off fuse.
3. Clean the appliance.
4. Leave the appliance door open.

Defrosting

Defrosting is actuated automatically.

Cleaning the appliance

⚠ Caution

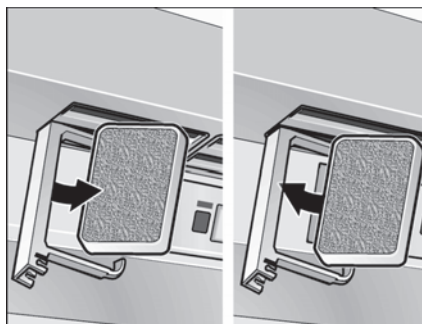
- Do not use abrasive, chloride or acidic cleaning agents or solvents.
- Do not use scouring or abrasive sponges. The metallic surfaces could corrode.
- Never clean shelves and containers in the dishwasher. The parts may become deformed!

Proceed as follows:

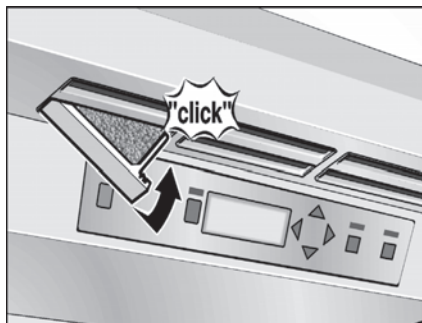
1. Before cleaning: Switch off the appliance.
2. Pull out mains plug or switch off fuse.
3. Clean the appliance with a soft cloth, lukewarm water and a little pH neutral washing-up liquid. The rinsing water must not run into the light.
4. Wipe the door seal with clear water only and then wipe dry thoroughly.
5. After cleaning reconnect and switch the appliance back on.

Interior fittings

All variable parts of the appliance can be taken out for cleaning (see chapter "Interior fittings").



3. Close the filter holder.



Odours

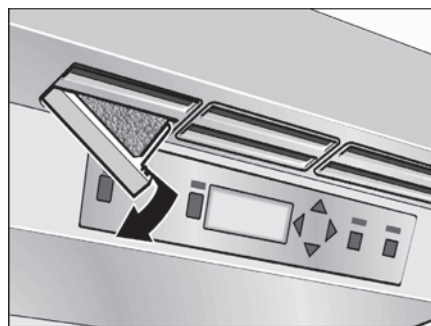
If you experience unpleasant odours:

1. Switch the appliance off.
2. Take all food out of the appliance.
3. Clean interior (see chapter "Cleaning the appliance").
4. Clean all packages.
5. Switch the appliance on again.
6. Check whether the formation of odours is still occurring after 24 hours.
7. Change odour filter (see chapter "Changing activated-carbon filter").

Changing activated-carbon filter

Spare filters are available from your dealer.

1. Open the filter holder.



2. Take out used filter and replace with new one.

Light (LED)

Your appliance features a maintenance-free LED light. These lights may be repaired by customer service or authorised technicians only.

Presentation light

The interior lighting can be switched on permanently for presentation purposes. The light is lit at a reduced luminosity. To activate the continuous light, move the light switch to position 2.

Position 1 100 % interior illumination when door open

Position 2 100 % interior illumination when door open, 50 % when door closed

To switch off the continuous light, move the light switch to position 1.

Tips for saving energy

- Install the appliance in a dry, well ventilated room! The appliance should not be installed in direct sunlight or near a heat source (e.g. radiator, cooker). If required, use an insulating plate.
- Do not block the ventilation openings in the appliance.
- Allow warm drinks to cool down before placing in the appliance.
- Open the appliance as briefly as possible.
- The arrangement of the fittings does not affect the energy rating of the appliance.

Operating noises

Quite normal noises

Droning

Motors are running (e.g. refrigerating units, fan).

Bubbling, humming or gurgling noises

Refrigerant is flowing through the tubing.

Clicking

Motor, switches or solenoid valves are switching on/off.

Preventing noises

The appliance is not level

Please align the appliance with a spirit level. Use the height-adjustable feet or place packing underneath them.

The appliance is not free-standing

Please move the appliance away from adjacent units or appliances.

Containers or storage areas wobble or stick

Please check the removable parts and re-insert them correctly if required.

Bottles or receptacles are touching each other

Move the bottles or receptacles slightly away from each other.

Eliminating minor faults yourself

Before you call customer service:

Please check whether you can eliminate the fault yourself based on the following information.

Customer service will charge you for advice – even if the appliance is still under guarantee!

Appliance

Fault	Possible cause	Remedial action
Appliance has no refrigeration capacity.	Appliance has been switched off.	Press the On/Off button.
The light does not work.	Power failure.	Check whether the power is on.
The display does not illuminate.	The fuse has been switched off.	Check the fuse.
	The mains plug has not been inserted properly.	Check whether the mains plug is secure.
The refrigerating unit is switching on more frequently and for longer.	Appliance opened frequently.	Do not open the appliance unnecessarily.
	The ventilation openings have been covered.	Remove obstacles.
The light (LED) does not work.	The LED lamp is defective.	Call customer service.
	Light switch is jammed.	Check whether it can be moved.
Display indicates "E..".	Electronics have detected a fault.	Call customer service.
Display indicates "LOWPOWER".	The mains voltage falls below the permitted limiting value.	When the mains voltage reaches the stipulated value again, the warning message goes out. If the warning message lasts for longer, inform the energy supply company.
Display indicates "HIGHVOLT".	The mains voltage exceeds the permitted limiting value.	When the mains voltage reaches the stipulated value again, the warning message goes out. If the warning message lasts for longer, inform the energy supply company.

Customer service

Your local customer service can be found in the telephone directory or in the customer-service index. Please provide customer service with the appliance product number (E-Nr.) and production number (FD).

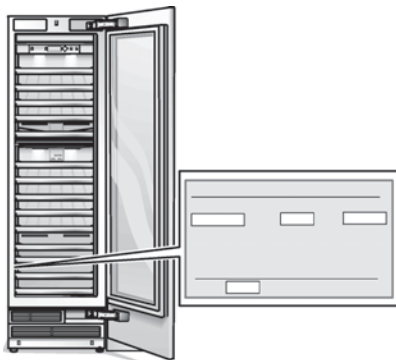
These specifications can be found on the rating plate.

To prevent unnecessary call-outs, please assist customer service by quoting the product and production numbers. This will save you additional costs.

Repair order and advice on faults

Contact information for all countries can be found on the enclosed customer service list.

GB	0344 892 8999	Calls charged at local or mobile rate.
IE	01450 2655	0.03 € per minute at peak. Off peak 0.0088 € per minute.
US	866 447 4363	toll-free



BSH Hausgeräte GmbH
Carl-Wery-Straße 34
81739 München, GERMANY

siemens-home.bsh-group.com

Manufactured by BSH Hausgeräte GmbH under Trademark License of Siemens AG



9000823524 (9510)

en