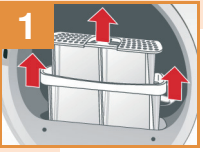


After each drying cycle

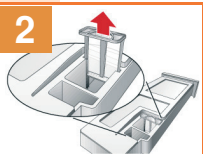
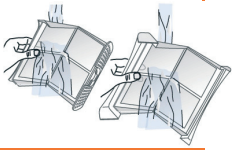


The fluff filters and condensation containers must always be cleaned or emptied after each drying cycle.



Cleaning the fluff filter

During drying, fluff and hair from the laundry is trapped by the fluff filter. A blocked or partially cleaned fluff filter reduces the flow of air. This means that the dryer does not reach its maximum performance. The fluff filter must therefore be cleaned after each drying cycle. Rinse the filter regularly under running water and carefully dry it. See also the notes on "Care and cleaning" in the instruction manual.

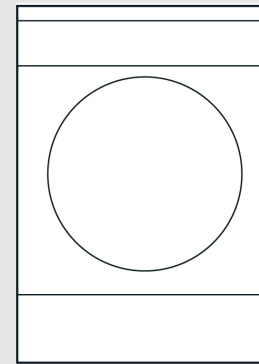


Emptying the condensation container

After each drying cycle, empty the condensation container because, under certain circumstances, the next drying programme will be cancelled as a result of the condensation container being full. You must also regularly clean the filter in the condensation container under running water or in the dishwasher. See also the information on "Care and cleaning" in the instruction manual.



Further important information can be found in your instructions for use and installation manual or care instructions. Pay particular attention to the chapter "What to do if..." and "After-sales service".



Dryer

The main points to begin with en

This leaflet provides you with a brief overview of the important information and improvements that you need to know about your new dryer before using it for the first time.

Residual moisture from the laundry



- Warm laundry feels damper than it actually is.
- Thanks to the heat pump technology, your laundry is always dried at gentle temperatures in any programme. However, you must observe the maximum load and type of laundry in order to achieve optimum results.
- You must also observe the information in the chapter "Notes on laundry" in the instructions for use.

The laundry feels slightly damper

If you think that the laundry is slightly too damp, use the fine adjustment for the drying result. You can find instructions on how to set required degrees of dryness in the section "Fine adjustment of the drying result" or "Adjust drying level" in your instructions for use.

The laundry is not evenly dry...

If you are drying thin and thick or multi-layered fabrics together, these will dry differently. To ensure that the laundry dries evenly, you must sort it according to the type of fabric and the structure. If required, select a time programme to finish the drying.

The laundry is still noticeably damp...

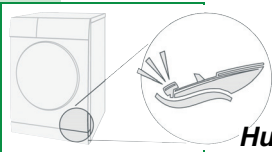
Take note of whether the drying cycle was interrupted after a service display (for example, Empty the container or Please empty the condensation container, or Clean the fluff filter or Please clean the lint filter), which means that the drying cycle is not yet complete. Correct the fault and continue the programme. See the chapter "What to do if..." in the instructions for use.



Normal noise during operation



Please note: During drying, the compressor, the pump and the movement of the laundry generate noises which are entirely normal.



Humming noise

The compressor in the dryer generates a humming noise. The volume and pitch of this may vary.

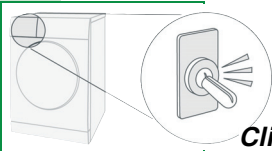
Humming...



Whirring

From time to time, the compressor in the dryer is cooled by a fan and this creates a whirring sound.

Sssssss...



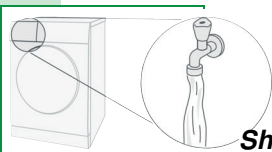
Clicking

The start of the automatic cleaning cycle for the heat exchanger causes a clicking noise.

Click...



During the automatic cleaning cycle, "cln" (Clean) or "Heat exchanger is being rinsed" appears in the display.



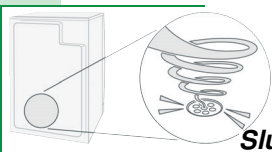
Noise

Rushing water can be heard during the automatic cleaning cycle.

Shsh...



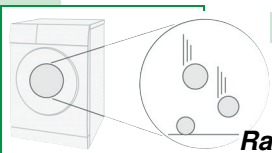
During the automatic cleaning cycle, "cln" (Clean) or "Heat exchanger is being rinsed" appears in the display.



Pumping

The process of pumping the condensation into the condensation container generates pumping noises.

Slurp...



Rattling

Rattling noises may be caused by the laundry moving if hard parts, such as buttons, zips, buckles or similar parts, are part of the laundry.

Rattle...



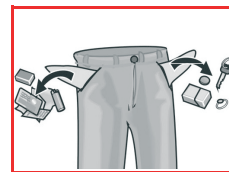
Information



You must pay particular attention to the safety information and the chapter "What to do if..." in the instructions for use.



Removing objects before drying



Before putting your laundry into the dryer, remove all objects (especially lighters, metal parts or similar objects) from pockets. Note the maximum load quantity. You must also observe the information in the chapter "Notes on laundry" in the instruction manual.



Selecting buttons more than once

The buttons are sensitive and it is sufficient to lightly touch them. If you select a button more than once (especially when setting the options), then you must let the button go after each selection in order to activate the sensor. Your selection will be followed by a button acknowledgement.



"Finished in" appears in the display

When a programme is selected, the anticipated drying time for the maximum load is displayed. While drying, the appliance's sensors detect the actual load and its level of moisture, and they correct the programme length. This is shown in the display by jumps in the "Finished in" time.



Interrupting/changing the programme

The drying operation can be paused for a short period to add more laundry, remove laundry or for programme changes. Depending on the model, the display "Finished in" is reset and restarted or stopped. After a while, the display is then corrected. To ensure that the heat exchanger is automatically cleaned, programmes must then always be allowed to continue until they end. Do not cancel a drying cycle before the programme automatically ends.



Laundry additives/care and cleaning

Cleaning agents and agents for pretreating laundry (e.g. stain removers, prewash sprays, etc.) must not come into contact with the surfaces of the dryer. If necessary, immediately wipe away spray residue and other residues/droplets with a damp cloth. You must also observe the information in the chapter "Care and cleaning" in the instruction manual.