

Programmes	°C	max.	Type of laundry	Additional functions; information
Cottons + Prewash + Hygiene	90 °C 60 °C	7 kg/ 4 kg*	Hard-wearing fabrics, heat-resistant fabrics made of cotton or linen	speedPerfect *, ecoPerfect , EasyIron , Extra Rinse ; for especially sensitive skin, extended wash cycle at selected temperature, higher water level, additional rinse cycle
Easy-Care + Prewash	60 °C		Easy-care fabrics made of cotton, linen, synthetic fibres or blended fabrics	speedPerfect , ecoPerfect , EasyIron , Extra Rinse
Mix	40 °C	3 kg	Fabrics made of cotton or easy-care fabrics	speedPerfect , ecoPerfect , EasyIron , Extra Rinse ; different types of laundry can be washed together
Dark Wash	40 °C		Dark-colored fabrics made of cotton and dark easy-care fabrics	speedPerfect , ecoPerfect , EasyIron , Extra Rinse ; Reduced rinse and final spin cycle
Delicate/Silk	40 °C		For delicate, washable fabrics, e.g. made of silk, satin, synthetic fibres or blended fabrics (e.g. curtains)	speedPerfect , ecoPerfect , EasyIron , Extra Rinse ; No spin between rinse cycles
Wool	40 °C		Hand- or machine-washable fabrics made of wool or containing wool	Particularly gentle wash programme to avoid shrinkage of laundry, longer programme breaks (fabrics rest in the detergent solution)
Super 15'	40 °C	2 kg	Easy-care fabrics made of cotton, linen, synthetic fibres or blended fabrics	Short programme, approx. 15 minutes, suitable for lightly soiled laundry
Outdoor	40 °C		All-weather, sports and outdoor fabrics including fabrics with weatherproof membrane	speedPerfect , ecoPerfect , Extra Rinse ; Reduced final spin in intervals
Shirts/Business	60 °C		Non-iron shirts made of cotton, linen, synthetic fibres or blended fabrics	speedPerfect , ecoPerfect , EasyIron , Extra Rinse ; spin only, hang up dripping wet
Lingerie	40 °C	1 kg	Dessous	speedPerfect , ecoPerfect , EasyIron , Extra Rinse ; Rinse/Spin , Empty
Additional programmes				
* Reduced load for additional speedPerfect function. i Programmes without pre-wash - add detergent to compartment II , programmes with pre-wash - distribute the detergent between compartments I and II .				

Safety instructions

- Read the instruction manual and installation instructions and all other information enclosed with the washing machine and act accordingly.
- Retain the documents for subsequent use.

Risk of electric shock

- Never pull the cable to disconnect the mains plug.
- Never insert/disconnect the mains plug with damp hands.

Danger to life

For worn-out appliances:

- Disconnect the mains plug.
- Sever the mains cable and discard along with the plug.
- Destroy the lock on the washing machine door. This will prevent children from locking themselves in and risking their lives.

Danger of suffocation

- Keep packaging, film and packaging parts out of the reach of children.

Risk of poisoning

Risk of explosion

- Keep detergents and care products out of the reach of children.
- Items of laundry pretreated with cleaning agents containing solvents, e.g. stain remover / cleaning solvent may lead to an explosion after being loaded into the washing machine. Rinse items of laundry thoroughly by hand beforehand.

Risk of injury

- The washing machine door can become very hot.
- Be careful when draining hot detergent solution.
- Do not climb onto the washing machine.
- Do not lean on the open washing machine door.
- Do not reach into the drum if it is still rotating.
- Be careful when opening the detergent drawer while the machine is in operation.

Siemens-Electrogeräte GmbH
Carl-Wery-Str. 34
81739 München / Germany

WM12E461TH...

9000 494 315
0811

Programme	Additional function	Load	Electricity consumption**	Water**	Programme duration**
Cottons 30 °C		7 kg	0,55 kWh	60 l	2:36 h
Cottons 40 °C		7 kg	0,69 kWh	60 l	2:36 h
Cottons 60 °C		7 kg	1,33 kWh	60 l	2:39 h
Cottons 60 °C	ecoPerfect *	7 kg	1,05 kWh	47 l	3:08 h
Cottons 90 °C		7 kg	2,00 kWh	64 l	2:47 h
Easy-Care 40 °C		3 kg	0,55 kWh	55 l	1:37 h
Mix 40 °C		3 kg	0,48 kWh	32 l	1:03 h
Delicate/ Silk 30 °C		2 kg	0,21 kWh	31 l	0:41 h
Wool		2 kg	0,10 kWh	39 l	0:40 h
Wool 30 °C		2 kg	0,19 kWh	39 l	0:40 h

* Programme setting with maximum spin speed for testing according to or in accordance with IEC 60 456.
** The values deviate from the indicated values depending on water pressure, water hardness, water inlet temperature, room temperature, type and amount of washing and degree of soiling, utilised detergent, fluctuations in the mains voltage and selected additional functions.

Care

Before washing for the first time

Do not load any laundry into the machine. Turn on the tap. Add the following to compartment **II**:

- approx. 1 litre water
- detergent (dosage according to the manufacturer's instructions for light soiling and the appropriate degree of water hardness)

Set the programme selector to **Easy-Care 60 °C** and select **Start/Reload**. At the end of the programme, turn the programme selector to **Off**.

Machine housing, control panel

- Wipe with a soft, damp cloth.
- Do not use any abrasive cloths, scourers or cleaning agents (stainless steel cleaners).
- Remove detergent and cleaning agent residue immediately.
- Do not clean with a jet of water.

Cleaning the detergent drawer ...

... if it contains detergent or fabric softener residues.

- Pull out, press insert down, remove draw completely.
- To remove the insert: press the insert upwards from below with your finger.
- Clean the detergent dispenser tray and insert with water and a brush and dry it.
- Attach the insert and engage (connect the cylinder to the guide pin).
- Push in the detergent drawer.

Drum

Leave the detergent drawer open so that any residual water can evaporate.

Descaling

Ensure there is no laundry in the machine

Descal the appliance according to the descaler manufacturer's instructions. This should not be necessary if the correct dosage of detergent is used.

Emergency release, e.g. in the event of a power cut

The programme continues to run when the power has been restored. However, if the laundry has to be removed, the washing machine door can be opened as follows:

Risk of scalding.
The detergent solution and laundry may be hot. If possible, leave it to cool down.
Do not reach into the drum if it is still rotating.
Do not open the washing machine door if water can be seen through the glass.

- Turn the programme selector to **Off** and disconnect the mains plug.
- Drain the detergent solution -> *page 10*.
- Pull the emergency release downwards with a tool and release. Washing machine door can then be opened.

Information on the display panel <small>depending on model</small>	
F: 16	Close the washing machine door properly; laundry may be caught.
F: 17	Open the tap completely, supply hose kinked or trapped; Clean the filter -> <i>page 10</i> , Water pressure too low.
F: 18	Detergent solution pump blocked; Clean the detergent solution pump -> <i>page 10</i> . Drainage hose / waste pipe blocked; Clean the drainage hose at the siphon -> <i>page 10</i> .
F: 21	Motor fault. Call customer services.
F: 23	Water in the base tub, appliance leaking. Call customer services.

Maintenance

Detergent solution pump

Turn the programme selector to **Off** and disconnect the mains plug.

- Open and remove the service flap.
- For models with a drainage hose:** Remove the drainage hose from the retainer and pull it from the housing. Remove the container. Remove the sealing cap, allow the detergent solution to flow out. Replace the sealing cap and place the drainage hose in the retainer.
- For models without a drainage hose:** Carefully unscrew the pump cover until the detergent solution begins to flow out. When the service flap is half full, close the pump cover and empty the service flap. Repeat the above steps until all the detergent solution has completely drained out.
- Carefully unscrew the pump cover (residual water).

Drainage hose at the siphon

Turn the programme selector to **Off** and disconnect the mains plug.

- Loosen the hose clamp, carefully remove the drainage hose (residual water).
- Clean the drainage hose and siphon connecting piece.
- Reattach the drainage hose and secure the connection with the hose clamp.

Filter in the water supply

Risk of electric shock!
Do not immerse the HydroSafe safety device in water (contains an electric valve).

Reduce the water pressure in the supply hose:

- Turn off the tap.
- Select any programme (apart from **Rinse/Spin** or **Empty**).
- Choose **Start/Reload**. Let the programme run for approximately 40 seconds.
- Turn the programme selector to **Off**. Disconnect the mains plug.
- Clean the filter: Disconnect the hose from the tap. Clean the filter using a small brush.
- Remove the hose on the rear of the appliance, Remove the filter with pliers and clean.
- Connect the hose and check for leaks.

What to do if ...

Water is leaking out.

- Attach/replace the drainage hose correctly.
- Tighten the screw connection of the supply hose.

No water supply. Detergent not dispensed.

- Start/Reload** not selected?
- Tap not turned on?
- Filter blocked? Clean the filter -> *page 10*.
- Supply hose kinked or trapped?

Washing machine door cannot be opened.

- Safety function active. Programme stopped? -> *page 4*.
- Start/Reload** selected? -> *page 3*, *4*.
- Can be opened by emergency release only-> *page 9*.

Programme does not start.

- Start/Reload** or (Finished in) time selected?
- Washing machine door closed?
- Childproof lock active? Deactivate -> *page 5*.

Detergent solution is not drained.

- Start/Reload** selected? -> *page 3*, *4*.
- Clean the detergent solution pump -> *page 10*.
- Clean the waste pipe and/or drainage hose.

Water not visible in the drum.

- Not a fault - water below the visible area.

Unsatisfactory spin result. Laundry wet/too damp.

- Not a fault - the unbalanced-load detection system has cancelled the spin cycle because of uneven distribution of the laundry. Distribute small and large items of laundry evenly inside the drum.
- EasyIron** selected? -> *page 5*.
- Selected speed too low? -> *page 5*.

The programme duration changes during the wash cycle.

- Not a fault – the programme sequence is optimised for the particular wash process. This may result in changes to the programme duration in the display field.

Spin cycle performed several times.

- Not a fault - unbalanced load detection system adjusts the imbalance.

Residual water in the compartment for care products.

- Not a fault - the action of the care product is not affected.
- Clean the insert if necessary -> *page 9*.

Odour formation in the washing machine.

- Run programme **Cottons 90 °C** without laundry. Use standard detergent.

Status display flashes. Foam may be coming out of the detergent drawer.

- Too much detergent used? Mix 1 tablespoon of fabric softener with ½ litre of water and pour into dispenser **II** (*not for outdoor and down-filled textiles!*).
- Reduce the detergent dosage for the next wash cycle.

Intense noise formation, vibrations and “wandering” during the spin cycle.

- Are the appliance feet fixed? Secure the appliance feet -> *Installation instructions*.
- Transportation safety devices removed? Remove the transportation safety devices -> *Installation instructions*.

Noises during spin and drain cycles.

- Clean detergent-solution pump -> *page 10*.

Display panel/indicator lamps do not function during operation.

- Power cut?
- Fuses triggered? Reset/change the fuse.
- If the fault occurs repeatedly, call customer services.

Programme sequence longer than usual.

- Not a fault - unbalanced load detection system adjusts imbalance by repeatedly distributing the laundry.
- Not a fault - foam detection system active - adds an additional rinse cycle.

Detergent residues on the laundry.

- Occasionally, phosphate-free detergents contain water-insoluble residues.
- Use the Rinse/Spin cycle** or brush out the laundry after washing.

Observe the safety instructions on page 8.

Washing machine

Instruction manual

Read these instructions and the separate installation instructions before operating the washing machine.

en

SIEMENS

Your washing machine

Congratulations - You have opted for a modern, high-quality domestic appliance manufactured by Siemens. The washing machine is distinguished by its economical water- and energy consumption. Each machine that leaves our factory has been inspected thoroughly to ensure that it functions properly and is in perfect condition.

Further information: www.siemens-home.com

Environmentally friendly waste disposal



All packaging must be disposed of in accordance with environmental guidelines. This appliance is certified in accordance with European Directive 2002/96/EEC on waste electrical and electronic equipment (WEEE). This directive provides the framework for the EU-wide collection and reuse of used appliances.

Contents

	Page
Intended use	1
Programmes	1
Setting and adjusting the programme	3
Washing	3/4
After washing	4
Individual settings	5/6
Important information	6
Overview of programmes	7
Safety instructions	8
Consumption values	8
Care	9
Information on the display panel	9
Maintenance	10
What to do if...	11



Protection of the environment/Conservation tips

- Always fill the washing machine with a maximum amount of laundry for the relevant programme.
- Wash normally soiled laundry without a pre-wash.
- Instead of **Cottons 90 °C**, choose the programme **Cottons 60 °C** with the additional function **ecoPerfect**. Comparable cleaning result with significantly lower energy consumption.
- Measure the detergent according to the manufacturer's instructions and water hardness.
- If the laundry is then dried in the tumble dryer, select the spin speed according to the instructions of the dryer manufacturer.

Intended use

- for domestic use only,
- for washing machine-washable fabrics and hand-washable wool in detergent solution,
- to be operated with cold drinking water and commercially available detergents and care products which are suitable for use in washing machines.



- Do not leave children unattended near the washing machine.
- The washing machine is not to be used by children or persons not familiar with the operating instructions.
- Keep pets away from the washing machine.

Preparation



Correct installation according to the separate Installation instructions.



Checking the machine

- Never use a damaged machine.
- Inform customer service.



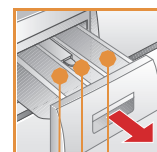
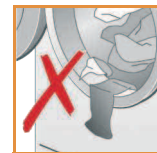
Connecting the mains plug



Make sure your hands are dry. Take hold of the plug only.



Turning the tap on



Compartment II: Detergent for the main wash, water softener, bleach, stain remover

Compartment ☼: Fabric softener, starch

Compartment I: Detergent for pre-wash

Programmes

Detailed overview of programmes -> page 7. Temperature and spin speed can be selected individually, irrespective of the selected programme and programme progress.

Cottons	Hard-wearing fabrics
+ Prewash	Hard-wearing fabrics, prewash at 30 °C
Easy-Care	Easy-care fabrics
+ Prewash	Easy-care fabrics, prewash at 30 °C
Mix	Different types of laundry
Delicate/Silk	Delicate washable fabrics
Wool	Hand/machine-washable wool
Rinse/Spin	Laundry washed by hand, (Extra Rinse) activated; if only using the spin cycle, deactivate the button
Empty	Drain rinsing water for ☼ (without final spin)
Super 15'	Short programme
Outdoor	All-weather, sports and outdoor fabrics -> page 6
Shirts/Business	No-iron shirts
Lingerie	Dessous programme
+ Hygiene	Hard-wearing fabrics
Dark Wash	Dark-colored fabrics

Programme selector

Display panel / options buttons

Additional functions

i Programme selector for switching the machine on and off and for selecting the programme. Can be turned in either direction.

☼ - 90 °C °C (Temp.) Se
☼ - 1,200* (rpm) Se
1 - 24h (Finished in) Pr
Status displays
☼ -0- W
☼ Ch
☼ Op

Before washing for the first time
Wash once without any laundry -> page 9.

Sorting and loading laundry

Follow the manufacturer's care information. According to the information on the care labels. According to type, color, soiling and temperature. Do not exceed the maximum load -> page 7.

Observe the important information -> page 6.

Insert large and small items of laundry.

Close the washing machine door. Take care not to trap items of laundry between the washing machine door and the rubber seal.

Add detergent and care products

Measure accordingly:

Amount of laundry, soiling, water hardness (ask your water supply company) and manufacturer's instructions. Pour liquid detergent into the appropriate dispenser and place in the drum.


i Dilute viscous fabric softener and fabric conditioner with water. This prevents blockages.

Setting** and adjusting programmes

Additional functions

Start / Reload




i ** If the  symbol flashes in the display panel, the childproof lock is active -> deactivate, page 5.

Additional functions and options buttons -> Individual settings, page 5.

 **Start /Reload**

i All buttons are sensitive and need only to be touched lightly. If the buttons are held for longer, the appliance automatically runs through the setting options.

Select the temperature (* = cold)

Select the spin speed (*depending on the model) or  (no final spin, laundry soaks in the last rinsing water, display panel - - -)

Programme end after

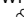
Programme sequence displays:

Wash, rinse, spin, programme duration or end (-0-)

Childproof lock -> page 5

Open the washing machine door, reload laundry -> page 4, 5

Washing

Detergent drawer with compartments I, II, 

Drum


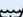

Control panel

Washing machine door

Service flap

Washing

Removing the washing

Open the washing machine door and remove the washing. If  (without final spin) is active: Turn the programme selector to  **Empty** or select the spin speed. Press  **Start/Reload**.



- Remove any foreign objects - risk of rusting.
- Leave the washing machine door and detergent drawer open so that any residual water can evaporate.


Turning the tap off

Not required for Aqua-Stop models -> Refer to installation instructions

Switching off

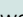
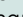
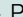
Turn the programme selector to **Off**.

End of programme when ...

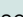
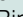

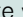

...  Start/Reload flashes and **-0-** appears on the display panel.

Interrupting the programme


Programmes at high temperatures:

- Cool washing: Select  **Rinse**/  **Spin**.
- Press  **Start/Reload**.

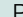
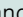
Programmes at lower temperatures:


- Choose  **Rinse**/  **Spin** (deactivate  (Extra Rinse) or select  **Empty**.
- Press  **Start/Reload**.

Changing the programme, if ...

- ... you have selected the wrong programme by mistake:
- Reselect the programme.
- Press  **Start/Reload**. The new programme starts from the beginning.

Reloading laundry, if ... -> page 5

... Press  **Start/Reload**, both the symbols **YES** and **+ ** are lit in the display panel. If **NO** is lit, the washing machine door cannot be opened.

- Press  **Start/Reload**.

Individual settings

Options buttons

You can change the spin speed and the temperature before the selected programme starts and while it is running. The effects depend on the programme progress.

°C (Temperature)

You can change the displayed washing temperature. The maximum selectable temperature depends on the current programme.

⌚ (Spin speed in rpm/without final spin)

You can change the displayed spin speed. The maximum selectable spin speed depends on the model and on which programme is currently selected.

⌚ (Finished in)

When you select the programme, the relevant programme duration is displayed. You can delay the start of the programme before it begins. The ⌚ (Finished in) time can be set in increments of one hour up to a maximum of 24 hours. Press the ⌚ (Finished in) button repeatedly until the required number of hours is displayed (h = hour). Press **Start/Reload**.

Additional functions -> and overview of programmes, see page 7

speedPerfect	For washing in a shorter time with a washing outcome comparable to that of the standard programme. Maximum load -> Overview of programmes, page 7.
ecoPerfect	For saving energy with a washing performance comparable to that of the standard programme.
(Easy-iron)	Special spin sequence with subsequent fluffing. More gentle final spin - residual moisture in the laundry slightly increased.
(Extra rinse)	Additional rinse cycle. For areas with very soft water or for further enhancing the spin result.

Childproof lock and reloading

Childproof lock/ Appliance lock	<p>You can lock the washing machine to prevent the functions you have set from being changed inadvertently.</p> <p>ON/OFF: Press and hold the Start/Reload button for 5 seconds after the start/end of the programme.</p> <p>Note: The childproof lock can remain activated until you wish to start the next programme, even after switching off the machine.</p> <p>Then you can deactivate the childproof lock before the start of the programme and activate it again as necessary once the programme has started.</p>
--	---

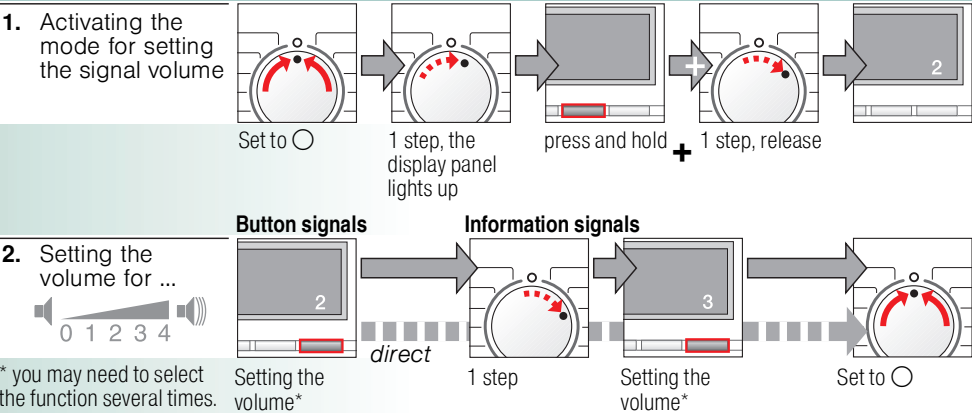
YES + Reload	<p>If you want to add subsequent items of laundry after the programme has started, press the Start/Reload button. The machine checks whether reloading is possible.</p> <p>YES + illuminated: Reloading is possible.</p> <p>NO flashes: wait until YES + light up.</p> <p>Note: do not open the door until both the YES + symbols are lit.</p> <p>NO: It is not possible to reload.</p> <p>Note: For safety reasons, the washing machine door remains locked when the water level and/or temperature is high, or during spinning.</p> <p>To continue the programme, press the Start/Reload button.</p>
----------------------	---

Start/Reload

To start the programme or to subsequently load additional laundry, and to activate/deactivate the childproof lock.

Individual settings

Signal



Important information

Protecting the laundry and the machine

- Empty pockets.
- Look out for metal items (paperclips, etc.).
- Wash decollate in a laundry bag (tights, curtains, underwired bras).
- Fasten zips, do up any buttons.
- Brush sand out of pockets and collars.
- Remove curtain fittings or place in the laundry bag.

Laundry with varying degrees of soiling

light	Wash new items of clothing separately. Do not pre-wash. If required, choose the additional function speedPerfect .
	Pre-treat any stains as necessary.
intense	Do not load as much laundry. Choose a programme with Prewash.

Soaking Load laundry of the same colour

Pour soaking agent/detergent into compartment **II** in accordance with the manufacturer's instructions. Turn the programme selector to **Cottons 30 °C** and press **Start/Reload**. After approx. 10 minutes, press **Start/Reload** to pause the programme. Once the required soaking time has elapsed, press **Start/Reload** again to continue the programme, or select a different programme.

Starching Laundry must not be treated with fabric softener

Starching is possible in all wash programmes if liquid starch is used. Pour the starch in accordance with the manufacturer's instructions into fabric softener compartment (rinse first if necessary).

Dyeing/bleaching

Dye should only be used in normal household quantities. Salt may damage stainless steel. Always follow the dye manufacturer's instructions! Do **not** use the washing machine for bleaching clothes!

Outdoor (Outdoor clothing) Laundry must not be treated with fabric softener

Special detergent is available for machine washing, particularly in sports shops. Dosage according to the manufacturer's instructions. Place the special detergent for outdoor clothing in compartment **II**. Turn the programme selector to **Outdoor**. Press °C Temperature and **Start/Reload**.

Overview of programmes

-> Refer to the table of consumption values on page 8 and notes on page 6.

Programmes	°C	max.	Type of laundry	Additional functions; information
Cottons	* - 90 °C			

Prewash		7 kg/ 4 kg*	Hard-wearing fabrics, heat-resistant fabrics made of cotton or linen	speedPerfect*, ecoPerfect, (Easy-iron), (Extra rinse)
Hygiene	* - 60 °C			speedPerfect*, ecoPerfect, (Easy-iron), (Extra rinse); for especially sensitive skin, extended wash cycle at selected temperature, higher water level, additional rinse cycle
Easy-Care	* - 60 °C		Easy-care fabrics made of cotton, linen, synthetic fibres or blended fabrics	speedPerfect, ecoPerfect, (Easy-iron), (Extra rinse)
Prewash				
Mix	* - 40 °C	3 kg	Fabrics made of cotton or easy-care fabrics	speedPerfect, ecoPerfect, (Easy-iron), (Extra rinse); different types of laundry can be washed together
Dark Wash	* - 40 °C		Dark-colored fabrics made of cotton and dark easy-care fabrics	speedPerfect, ecoPerfect, (Easy-iron), (Extra rinse); Reduced rinse and final spin cycle
Delicate/Silk	* - 40 °C		For delicate, washable fabrics, e.g. made of silk, satin, synthetic fibres or blended fabrics (e.g. curtains)	speedPerfect, ecoPerfect, (Easy-iron), (Extra rinse); No spin between rinse cycles
Wool	* - 40 °C		Hand- or machine-washable fabrics made of wool or containing wool	Particularly gentle wash programme to avoid shrinkage of laundry, longer programme breaks (fabrics rest in the detergent solution)
Super 15'	* - 40 °C	2 kg	Easy-care fabrics made of cotton, linen, synthetic fibres or blended fabrics	Short programme, approx. 15 minutes, suitable for lightly soiled laundry
Outdoor	* - 40 °C		All-weather, sports and outdoor fabrics including fabrics with weatherproof membrane	speedPerfect, ecoPerfect, (Extra rinse); Reduced final spin in intervals
Shirts/Business	* - 60 °C		Non-iron shirts made of cotton, linen, synthetic fibres or blended fabrics	speedPerfect, ecoPerfect, (Easy-iron), (Extra rinse); spin only, hang up dripping wet
Lingerie	* - 40 °C	1 kg	Dessous	speedPerfect, ecoPerfect, (Easy-iron), (Extra rinse)
Additional programmes				
Rinse/Spin, Empty				

* Reduced load for additional speedPerfect function.
i Programmes without pre-wash - add detergent to compartment II, programmes with pre-wash - distribute the detergent between compartments I and II.

Siemens-Electrogeräte GmbH
Carl-Wery-Str. 34
81739 München / Germany

9000 494 315
0811

WM12E461TH...



Safety instructions

- Read the instruction manual and installation instructions and all other information enclosed with the washing machine and act accordingly.
- Retain the documents for subsequent use.

Risk of electric shock

- Never pull the cable to disconnect the mains plug.
- Never insert/disconnect the mains plug with damp hands.

Danger to life

For worn-out appliances:

- Disconnect the mains plug.
- Sever the mains cable and discard along with the plug.
- Destroy the lock on the washing machine door. This will prevent children from locking themselves in and risking their lives.

Danger of suffocation

- Keep packaging, film and packaging parts out of the reach of children.

Risk of poisoning

Risk of explosion

- Keep detergents and care products out of the reach of children.
- Items of laundry pretreated with cleaning agents containing solvents, e.g. stain remover / cleaning solvent may lead to an explosion after being loaded into the washing machine. Rinse items of laundry thoroughly by hand beforehand.

Risk of injury

- The washing machine door can become very hot.
- Be careful when draining hot detergent solution.
- Do not climb onto the washing machine.
- Do not lean on the open washing machine door.
- Do not reach into the drum if it is still rotating.
- Be careful when opening the detergent drawer while the machine is in operation.

Consumption values

Programme	Additional function	Load	Electricity consumption**	Water**	Programme duration**
Cottons 30 °C		7 kg	0,55 kWh	60 l	2:36 h
Cottons 40 °C		7 kg	0,69 kWh	60 l	2:36 h
Cottons 60 °C		7 kg	1,33 kWh	60 l	2:39 h
Cottons 60 °C	ecoPerfect*	7 kg	1,05 kWh	47 l	3:08 h
Cottons 90 °C		7 kg	2,00 kWh	64 l	2:47 h
Easy-Care 40 °C		3 kg	0,55 kWh	55 l	1:37 h
Mix 40 °C		3 kg	0,48 kWh	32 l	1:03 h
Delicate/ Silk *		2 kg	0,06 kWh	31 l	0:41 h
Delicate/ Silk 30 °C		2 kg	0,21 kWh	31 l	0:41 h
Wool *		2 kg	0,10 kWh	39 l	0:40 h
Wool 30 °C		2 kg	0,19 kWh	39 l	0:40 h

* Programme setting with maximum spin speed for testing according to or in accordance with IEC 60 456.

** The values deviate from the indicated values depending on water pressure, water hardness, water inlet temperature, room temperature, type and amount of washing and degree of soiling, utilised detergent, fluctuations in the mains voltage and selected additional functions.

Care



- **Risk of electric shock.** Disconnect the mains plug.
- **Risk of explosion.** No solvents.



Before washing for the first time

Do not load any laundry into the machine. Turn on the tap.

Add the following to compartment **II**:

- approx. 1 litre water
- detergent (dosage according to the manufacturer's instructions for light soiling and the appropriate degree of water hardness)

Set the programme selector to **Easy-Care 60 °C** and select **Start/Reload**. At the end of the programme, turn the programme selector to **Off**.



Machine housing, control panel

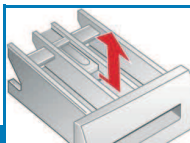
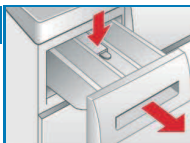
- Wipe with a soft, damp cloth.
- Do not use any abrasive cloths, scourers or cleaning agents (stainless steel cleaners).
- Remove detergent and cleaning agent residue immediately.
- Do not clean with a jet of water.



Cleaning the detergent drawer ...

... if it contains detergent or fabric softener residues.

1. Pull out, press insert down, remove draw completely.
2. To remove the insert: press the insert upwards from below with your finger.
3. Clean the detergent dispenser tray and insert with water and a brush and dry it.
4. Attach the insert and engage (connect the cylinder to the guide pin).
5. Push in the detergent drawer.



Leave the detergent drawer open so that any residual water can evaporate.



Drum

Leave the washing machine door open so that the drum can dry out. Rust stains - use chlorine-free cleaning agent, not steel wool.



Descaling

Ensure there is no laundry in the machine

Descale the appliance according to the descaler manufacturer's instructions. This should not be necessary if the correct dosage of detergent is used.



Emergency release, e.g. in the event of a power cut

The programme continues to run when the power has been restored. However, if the laundry has to be removed, the washing machine door can be opened as follows:



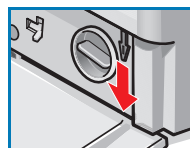
Risk of scalding.

The detergent solution and laundry may be hot. If possible, leave it to cool down.

Do not reach into the drum if it is still rotating.

Do not open the washing machine door if water can be seen through the glass.

1. Turn the programme selector to **Off** and disconnect the mains plug.
2. Drain the detergent solution -> page 10.
3. Pull the emergency release downwards with a tool and release. Washing machine door can then be opened.



Information on the display panel depending on model

F: 16	Close the washing machine door properly; laundry may be caught.
F: 17	Open the tap completely, supply hose kinked or trapped; Clean the filter -> page 10, Water pressure too low.
F: 18	Detergent solution pump blocked; Clean the detergent solution pump -> page 10. Drainage hose / waste pipe blocked; Clean the drainage hose at the siphon -> page 10.
F: 21	Motor fault. Call customer services.
F: 23	Water in the base tub, appliance leaking. Call customer services.

Maintenance



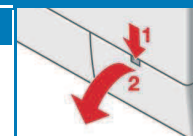
- **Risk of scalding.** Allow the detergent solution to cool down.
- Turn off the tap.



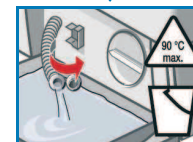
Detergent solution pump

Turn the programme selector to **Off** and disconnect the mains plug.

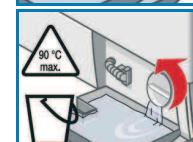
1. Open and remove the service flap.



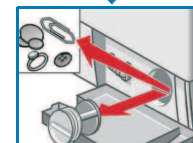
2. **For models with a drainage hose:** Remove the drainage hose from the retainer and pull it from the housing. Remove the container. Remove the sealing cap, allow the detergent solution to flow out. Replace the sealing cap and place the drainage hose in the retainer.



- 2* **For models without a drainage hose:** Carefully unscrew the pump cover until the detergent solution begins to flow out. When the service flap is half full, close the pump cover and empty the service flap. Repeat the above steps until all the detergent solution has completely drained out.
3. Carefully unscrew the pump cover (residual water).



4. Clean the interior, pump cover thread and pump housing (the impeller in the detergent solution pump must rotate).
5. Replace the pump cover and screw it tightly.
6. Place the service flap back on and close.



To prevent unused detergent from flowing straight into the drain during the next wash: Pour 1 litre of water into compartment **II** and start the **Empty** programme.



Drainage hose at the siphon

Turn the programme selector to **Off** and disconnect the mains plug.

1. Loosen the hose clamp, carefully remove the drainage hose (residual water).
2. Clean the drainage hose and siphon connecting piece.
3. Reattach the drainage hose and secure the connection with the hose clamp.



Filter in the water supply

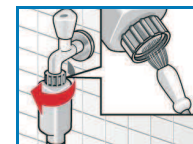


Risk of electric shock!

Do not immerse the HydroSafe safety device in water (contains an electric valve).

Reduce the water pressure in the supply hose:

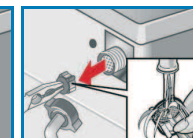
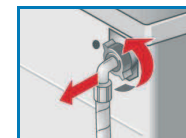
1. Turn off the tap.
2. Select any programme (apart from **Rinse/Spin/Empty**).
3. Choose **Start/Reload**. Let the programme run for approximately 40 seconds.
4. Turn the programme selector to **Off**. Disconnect the mains plug.
5. Clean the filter:
Disconnect the hose from the tap.
Clean the filter using a small brush.



and/or for Standard and Aqua-Secure models:

Remove the hose on the rear of the appliance,
Remove the filter with pliers and clean.

6. Connect the hose and check for leaks.



What to do if ...

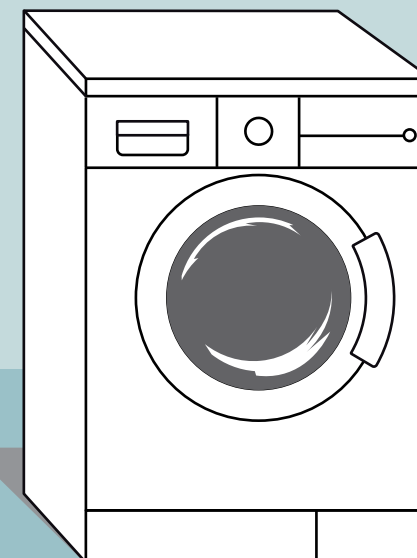
Water is leaking out.	<ul style="list-style-type: none"> – Attach/replace the drainage hose correctly. – Tighten the screw connection of the supply hose.
No water supply.	<ul style="list-style-type: none"> – Start/Reload not selected?
Detergent not dispensed.	<ul style="list-style-type: none"> – Tap not turned on? – Filter blocked? Clean the filter -> <i>page 10</i>. – Supply hose kinked or trapped?
Washing machine door cannot be opened.	<ul style="list-style-type: none"> – Safety function active. Programme stopped? -> <i>page 4</i>. – Ø (without final spin) selected? -> <i>page 3, 4</i>. – Can be opened by emergency release only? -> <i>page 9</i>.
Programme does not start.	<ul style="list-style-type: none"> – Start/Reload or ⏸ (Finished in) time selected? – Washing machine door closed? – Childproof lock active? Deactivate -> <i>page 5</i>.
Detergent solution is not drained.	<ul style="list-style-type: none"> – Ø (without final spin) selected? -> <i>page 3, 4</i>. – Clean the detergent solution pump -> <i>page 10</i>. – Clean the waste pipe and/or drainage hose.
Water not visible in the drum.	<ul style="list-style-type: none"> – Not a fault - water below the visible area.
Unsatisfactory spin result.	<ul style="list-style-type: none"> – Not a fault - the unbalanced-load detection system has cancelled the spin cycle because of uneven distribution of the laundry.
Laundry wet/too damp.	<ul style="list-style-type: none"> – Distribute small and large items of laundry evenly inside the drum. – ☼ (Easy-iron) selected? -> <i>page 5</i>. – Selected speed too low? -> <i>page 5</i>.
The programme duration changes during the wash cycle.	<ul style="list-style-type: none"> – Not a fault – the programme sequence is optimised for the particular wash process. This may result in changes to the programme duration in the display field.
Spin cycle performed several times.	<ul style="list-style-type: none"> – Not a fault - unbalanced load detection system adjusts the imbalance.
Residual water in the compartment for care products.	<ul style="list-style-type: none"> – Not a fault - the action of the care product is not affected. – Clean the insert if necessary -> <i>page 9</i>.
Odour formation in the washing machine.	<ul style="list-style-type: none"> – Run programme 👤 Cottons 90 °C without laundry. Use standard detergent.
Status display 👤 flashes. Foam may be coming out of the detergent drawer.	<ul style="list-style-type: none"> – Too much detergent used? Mix 1 tablespoon of fabric softener with ½ litre of water and pour into dispenser II (<i>not for outdoor and down-filled textiles!</i>). – Reduce the detergent dosage for the next wash cycle.
Intense noise formation, vibrations and “wandering” during the spin cycle.	<ul style="list-style-type: none"> – Are the appliance feet fixed? – Secure the appliance feet -> <i>Installation instructions</i>. – Transportation safety devices removed? – Remove the transportation safety devices -> <i>Installation instructions</i>.
Noises during spin and drain cycles.	<ul style="list-style-type: none"> – Clean detergent-solution pump -> <i>page 10</i>.
Display panel/indicator lamps do not function during operation.	<ul style="list-style-type: none"> – Power cut? – Fuses triggered? Reset/change the fuse. – If the fault occurs repeatedly, call customer services.
Programme sequence longer than usual.	<ul style="list-style-type: none"> – Not a fault - unbalanced load detection system adjusts imbalance by repeatedly distributing the laundry. – Not a fault - foam detection system active - adds an additional rinse cycle.
Detergent residues on the laundry.	<ul style="list-style-type: none"> – Occasionally, phosphate-free detergents contain water-insoluble residues. – Use the 🧼 Rinse/🌀 Spin cycle or brush out the laundry after washing.

If you cannot correct a fault yourself (switching on/off) or a repair is required:

- Turn the programme selector to **Off** and remove the mains plug from the socket.
- Turn off the water supply and call customer services -> *Installation instructions*.



Observe the safety instructions on *page 8*.



Washing machine

Instruction manual

en



Read these instructions and the separate installation instructions before operating the washing machine.

SIEMENS