



TE 6...

siemens-home.com/welcome

de Kurzanleitung
en Quick reference guide

Beispiel Zubereitung
Latte Macchiato
sehr stark/groß

Sample Preparation
Latte Macchiato
very strong/large

1. Plug the power cord into the wall outlet.
2. Fill the water tank to the 'max.' level.
3. Add coffee beans to the hopper.
4. Turn the power switch to 'ON'.
5. Place a cup on the drip tray.
6. Select 'Latte Macchiato' on the display (normal/regular).
7. Select 'sehr stark' (very strong) on the display (2x).
8. Select 'groß' (large) on the display.
9. Select 'mittelgroß' (medium) on the display.
10. Press the 'start stop' button (1x).
11. Select 'groß' (large) on the display.
12. Insert a 'Milch milk' carton into the milk system.
13. The machine dispenses coffee and milk into the cup.
14. Press the 'start stop' button.
15. The machine finishes dispensing the coffee.

Service-Programm
milk clean

Service Program
milk clean

1. Press 'menu' then 'milk clean' on the display.
2. 'Milchsystem reinigen' (Rinse the milk system). Continue: press start; Abbruch: milk clean drücken (Cancel: press milk clean).
3. Press 'start stop'.
4. 'Leeres Glas unter Auslauf stellen. Schlauch in Glas geben -> start' (Place empty glass under outlet. Place tube in glass -> start).
5. Place a glass under the milk outlet.
6. Press 'start stop' (ca. 1 Min. approx. 1 min.).
7. 'Milchsystem wird gereinigt' (Milk system is rinsing).
8. Wipe the glass with a cloth.

Manuelles Reinigen
Milchsystem

Manual clean
Milk system

1. Remove the milk tube from the machine.
2. Clean the milk tube with a brush.
3. Clean the milk tube with a cloth.
4. Clean the milk tube with a brush.
5. Clean the milk tube with a brush.
6. Clean the milk tube with a brush (click!).
7. Clean the milk tube with a brush.
8. Clean the milk tube with a brush.

Reinigen
Brüheinheit

Clean
Brewing unit

1. Turn the power switch to 'OFF'.
2. Plug the power cord into the wall outlet.
3. Remove the brewing unit from the machine.
4. Clean the brewing unit with a brush (1, 2).
5. Clean the brewing unit with a brush.
6. Clean the brewing unit with a brush.
7. Clean the brewing unit with a brush.
8. Clean the brewing unit with a cloth.
9. Clean the brewing unit with a brush (click!).
10. Clean the brewing unit with a brush (click!).
11. Clean the brewing unit with a brush (1, 2).
12. Clean the brewing unit with a brush.

Bitte unbedingt die Sicherheits-hinweise in der Gebrauchsanleitung lesen und beachten.
Please read the safety information in the instruction manual carefully.

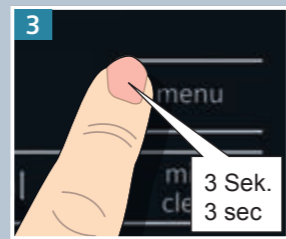
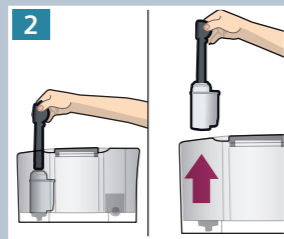
Aufbewahrungsfach für Kurzanleitung
Storage compartment for quick reference guide

Service-Programm
calc'nClean

Service Program
calc'nClean

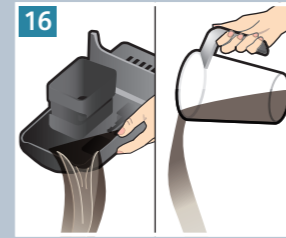
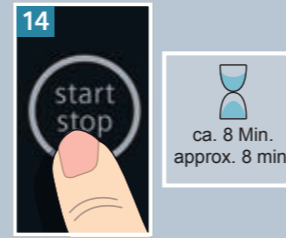
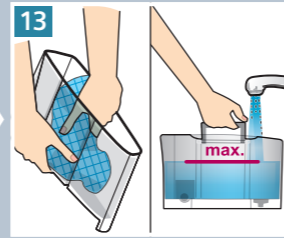
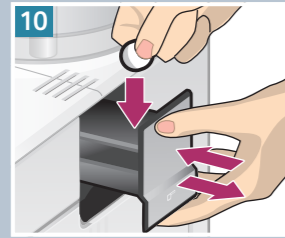
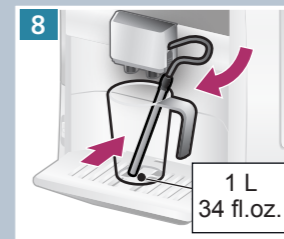
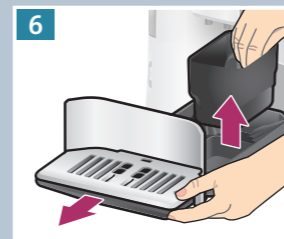
1 calc'nClean notwendig
→ 3 Sek. menu drücken

calc'nClean necessary
→ press menu for 3 sec



4 calc'nClean
Fortsetzen: start drücken
Abbruch: [stop] drücken

calc'nClean
Continue: Press start
Cancel: Press [stop]

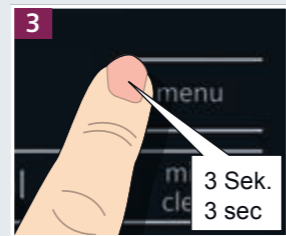
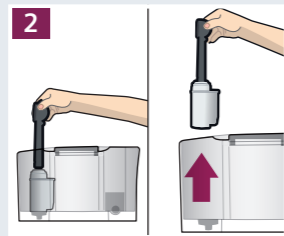


Service-Programm
Entkalken

Service Program
Descale

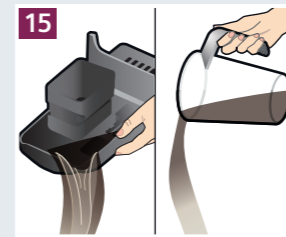
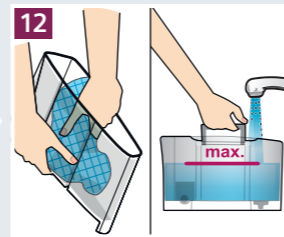
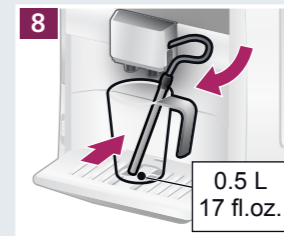
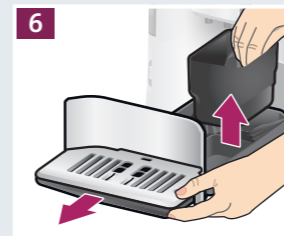
1 Entkalken notwendig
→ 3 Sek. menu drücken

Descaling necessary
→ press menu for 3 sec



4 Entkalken
Fortsetzen: start drücken
Abbruch: [stop] drücken

Descale
Continue: Press start
Cancel: Press [stop]

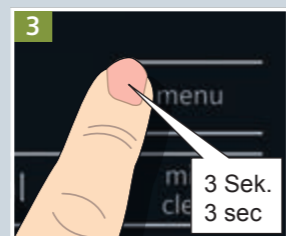


Service-Programm
Reinigen

Service Program
Clean

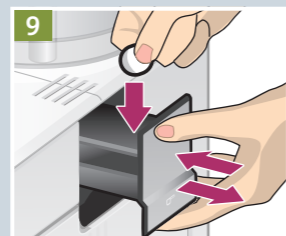
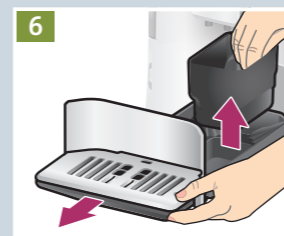
1 Reinigen notwendig
→ 3 Sek. menu drücken

Cleaning necessary
→ press menu for 3 sec



4 Reinigen
Fortsetzen: start drücken
Abbruch: [stop] drücken

Clean
Continue: Press start
Cancel: Press [stop]



Hergestellt von BSH Hausgeräte GmbH
unter Markenlizenz der Siemens AG
Manufactured by BSH Hausgeräte GmbH
under Trademark License of Siemens AG

BSH Hausgeräte GmbH
Carl-Wery-Straße 34
81739 München, GERMANY

www.siemens-home.com

